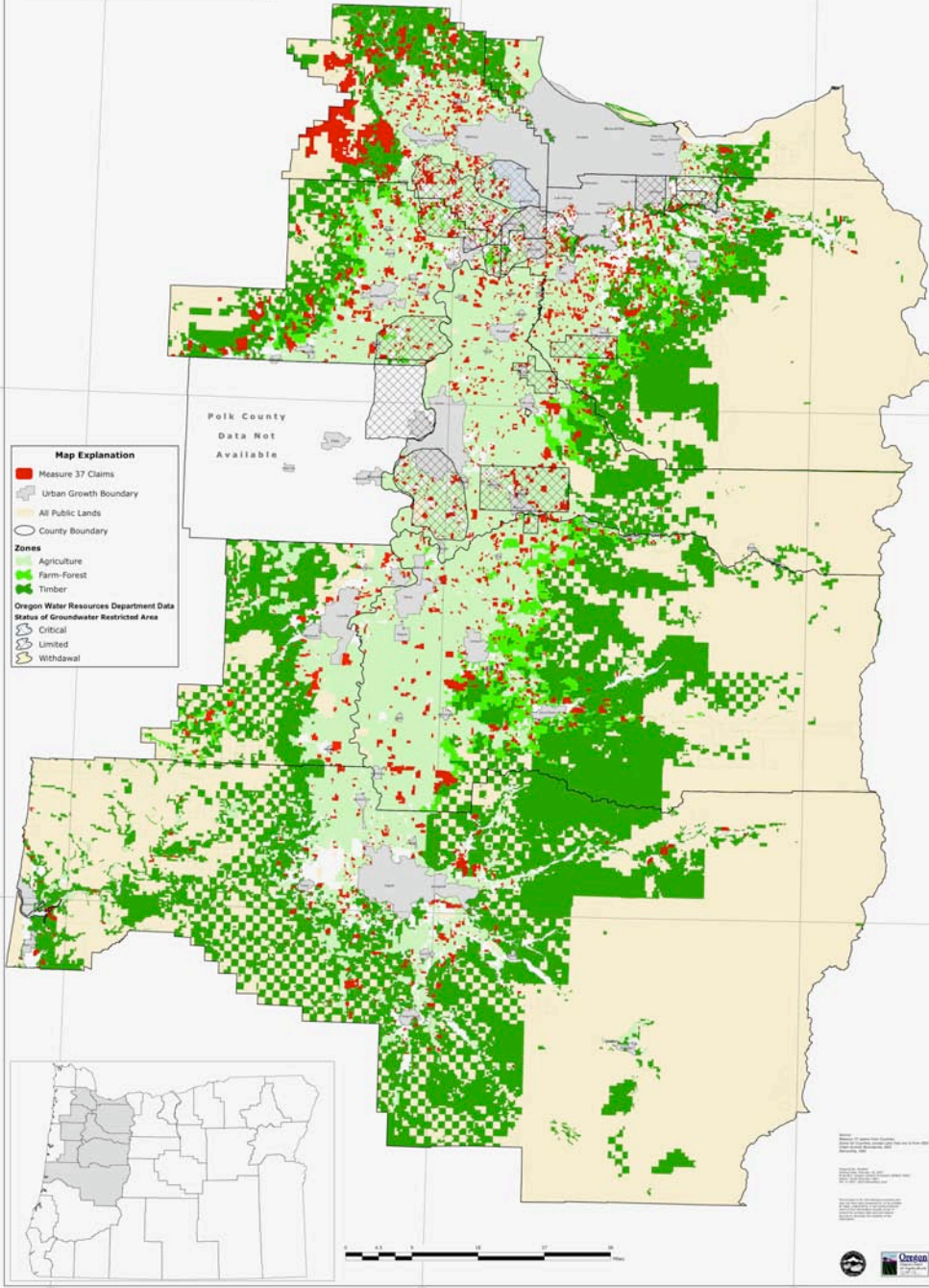


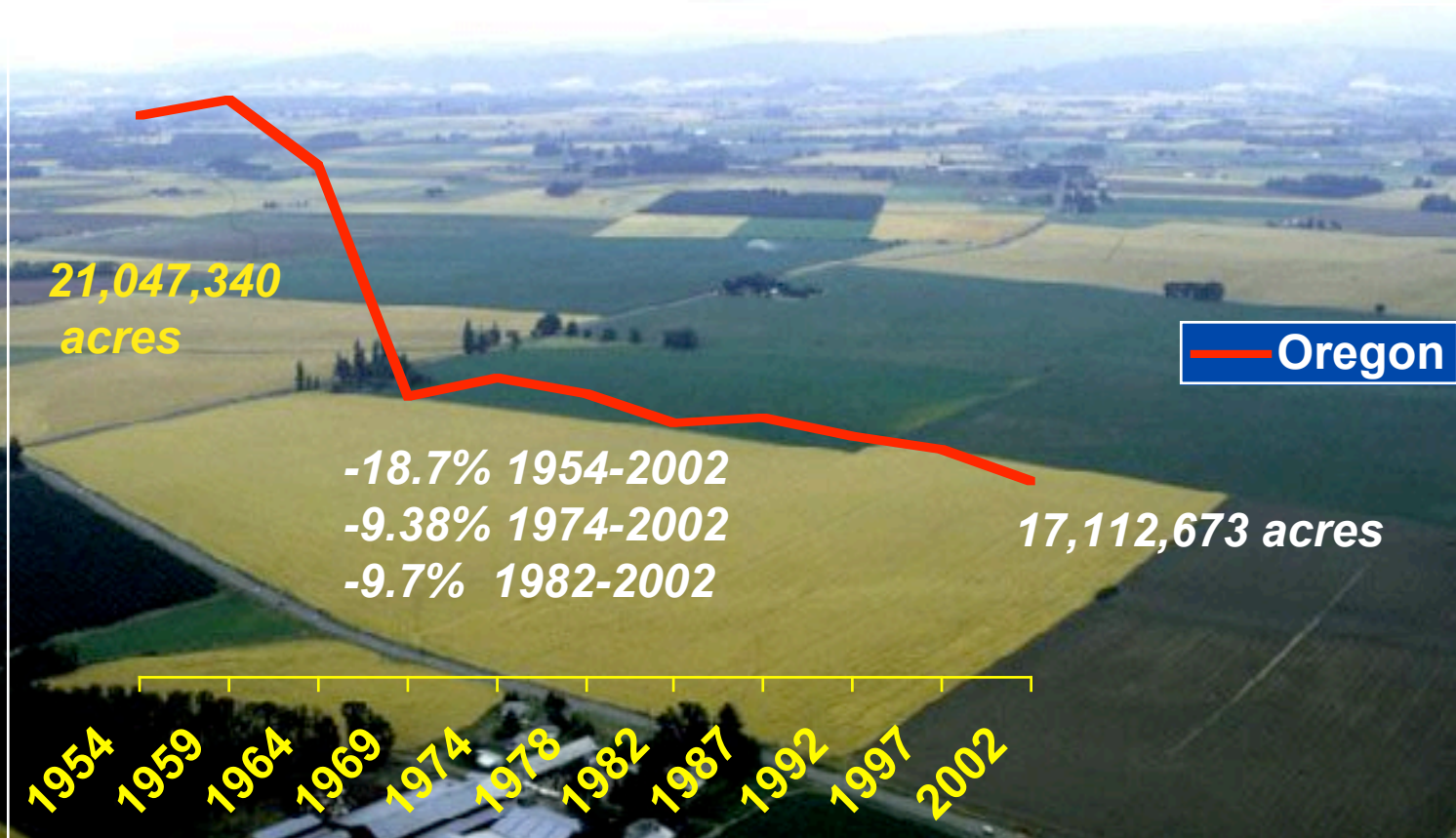
Measure 37 Claims Willamette Valley



Willamette Valley Measure 37 Claims

- Total acres of Ag zoned private owned land: 1,496,696.16.
- All acres in M 37 claims: 258,152.66.
- Total acres of Ag zoned land in M37 claims: 132,346.25.
- *51.1% of all WV M37 acres are Ag zoned lands.*
- *8.8% of all WV Ag zoned private owned land involves M 37 claims.*

Land in Farms: 1954-2002



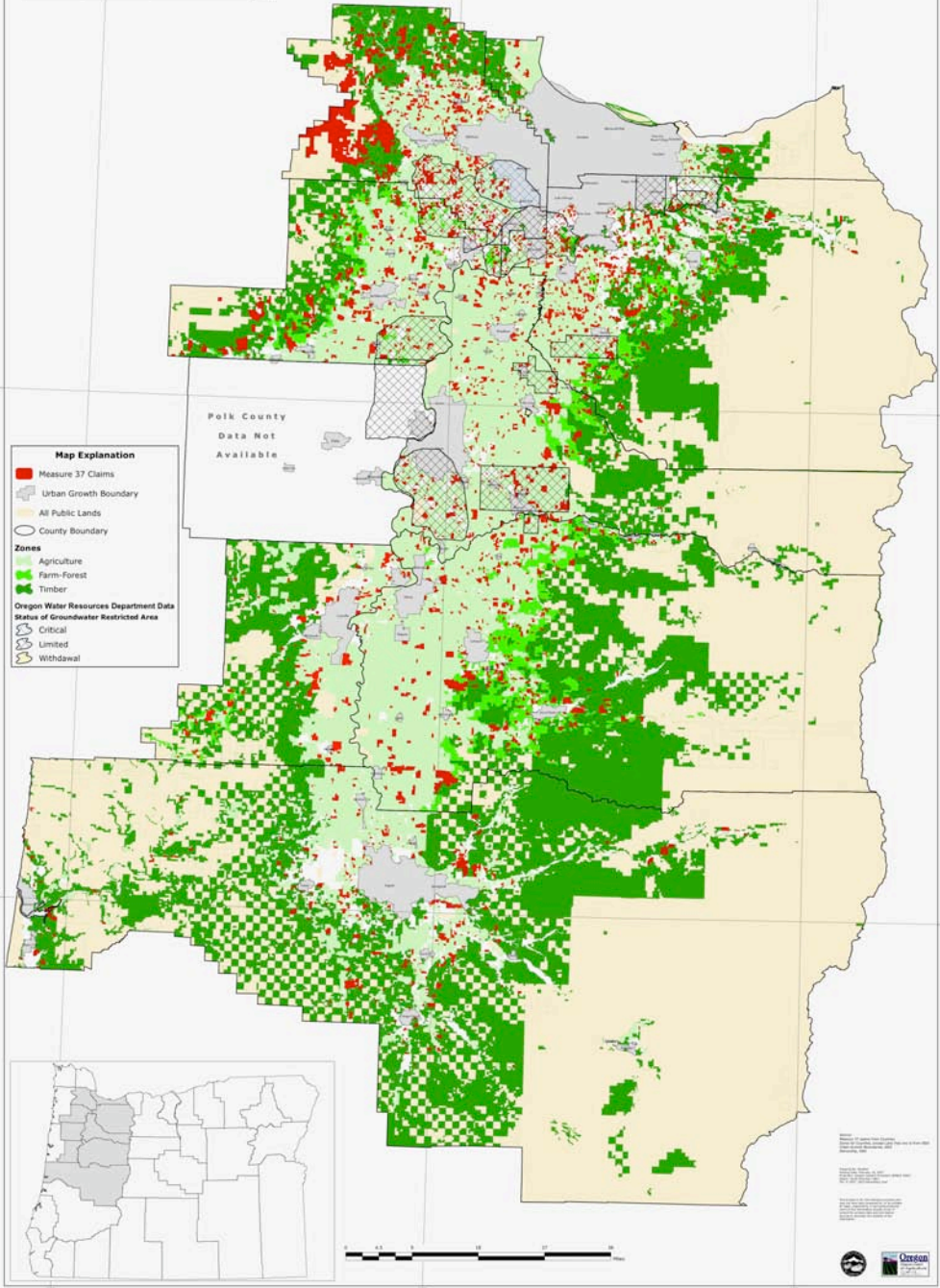
Source: Census of Agriculture

Conversion of Agricultural Lands: 1982-1997

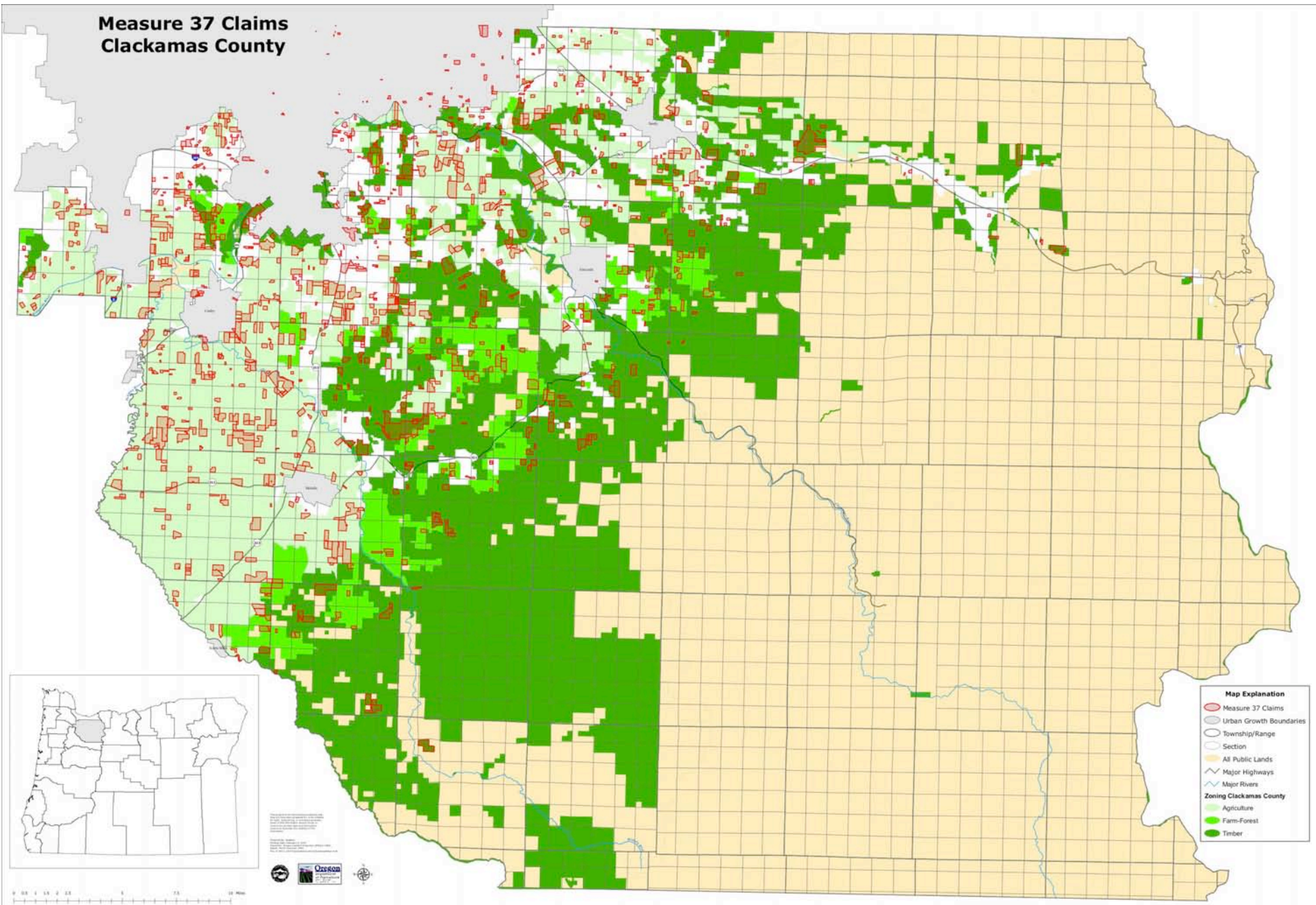
- Oregon: 144,300 acres
- 60,900 acres within UGBs.
- 35,000 acres within rural development zones.
- 48,400 acres in resource land zones.

Source: National Resources Inventory, USDA Natural Resources Conservation Service

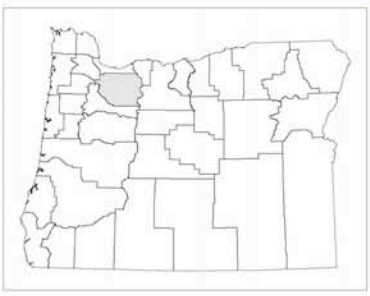
Measure 37 Claims Willamette Valley



Measure 37 Claims Clackamas County

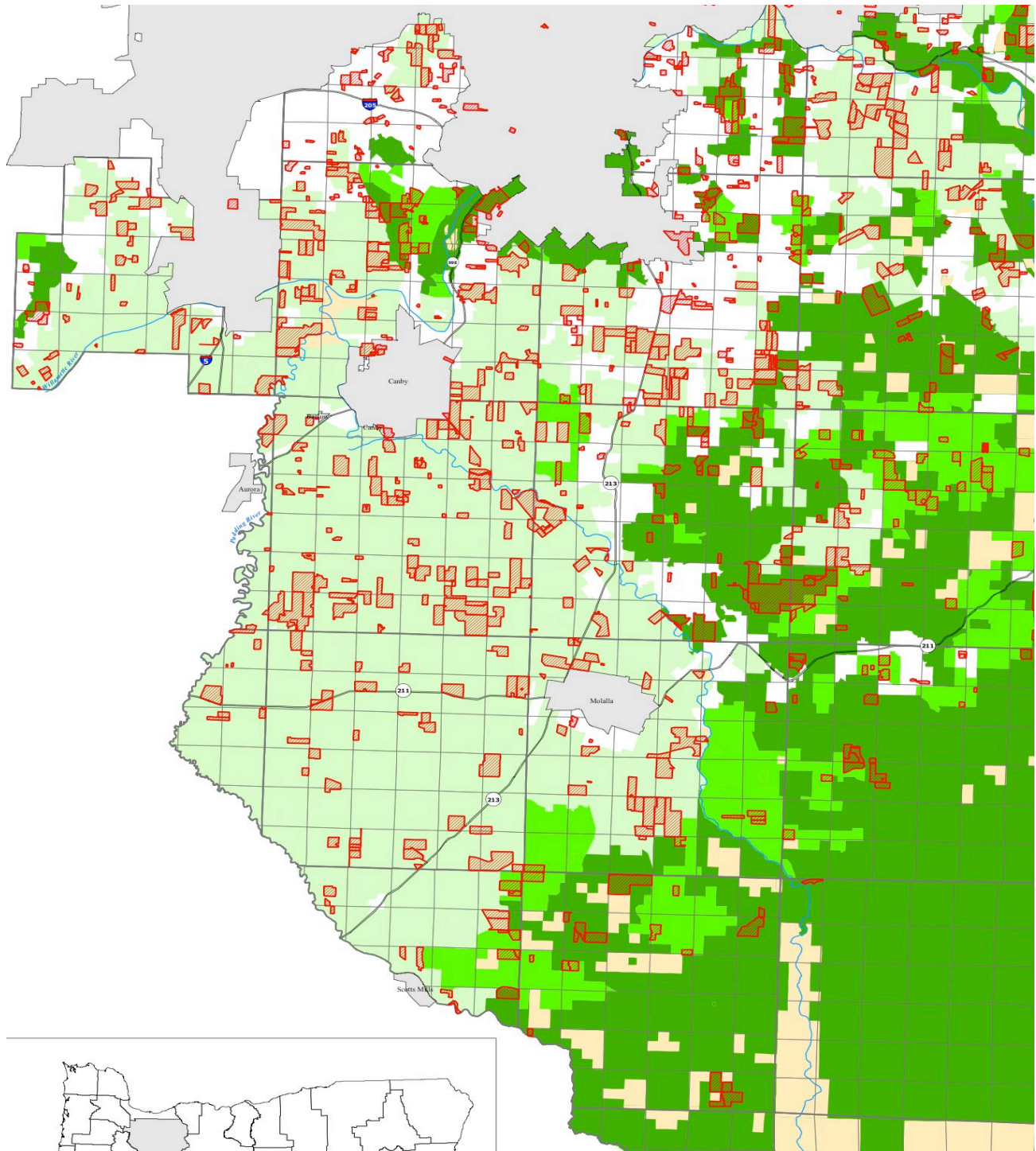


- Map Explanation**
- Measure 37 Claims
 - Urban Growth Boundaries
 - Township/Range
 - Section
 - All Public Lands
 - Major Highways
 - Major Rivers
- Zoning Clackamas County**
- Agriculture
 - Farm-Forest
 - Timber

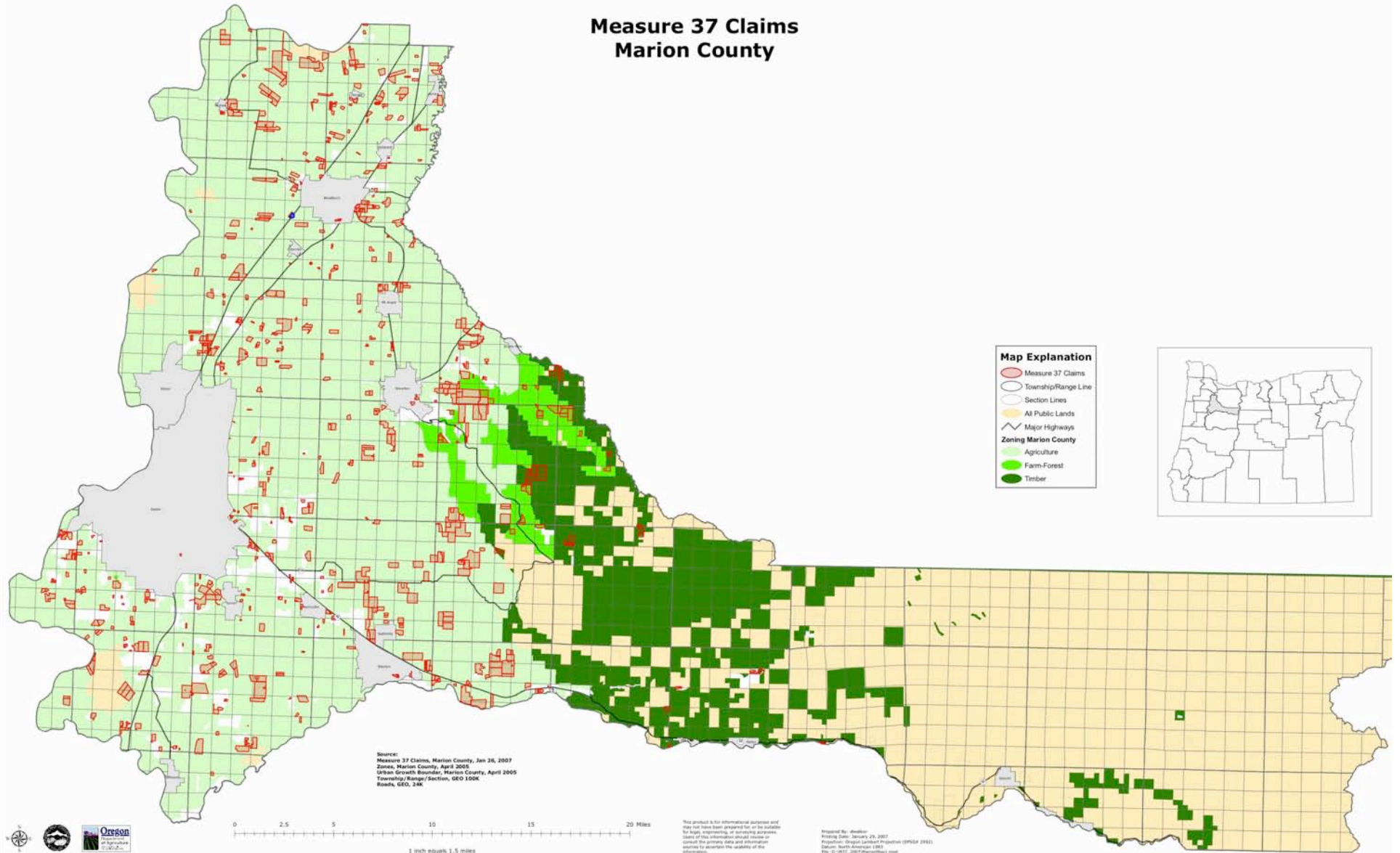


Clackamas County
Measure 37 Claims
Map Date: 10/2011
Map Scale: 1" = 1 Mile
Map Projection: NAD 83 UTM Zone 12N
Map Author: Clackamas County Planning Department
Map Contact: Planning Department, 1000 NE Oregon Street, Clackamas, OR 97015
Map Phone: 503-261-3000
Map Fax: 503-261-3001
Map Email: planning@clackamas.gov





Measure 37 Claims Marion County



Map Explanation

- Measure 37 Claims
- Township/Range Line
- Section Lines
- All Public Lands
- Major Highways

Zoning Marion County

- Agriculture
- Farm-Forest
- Timber



Source:
 Measure 37 Claims, Marion County, Jan 26, 2007
 Zones, Marion County, April 2005
 Urban Growth Boundaries, Marion County, April 2005
 Township/Range/Section, GEO 100K
 Roads, GEO, 24K

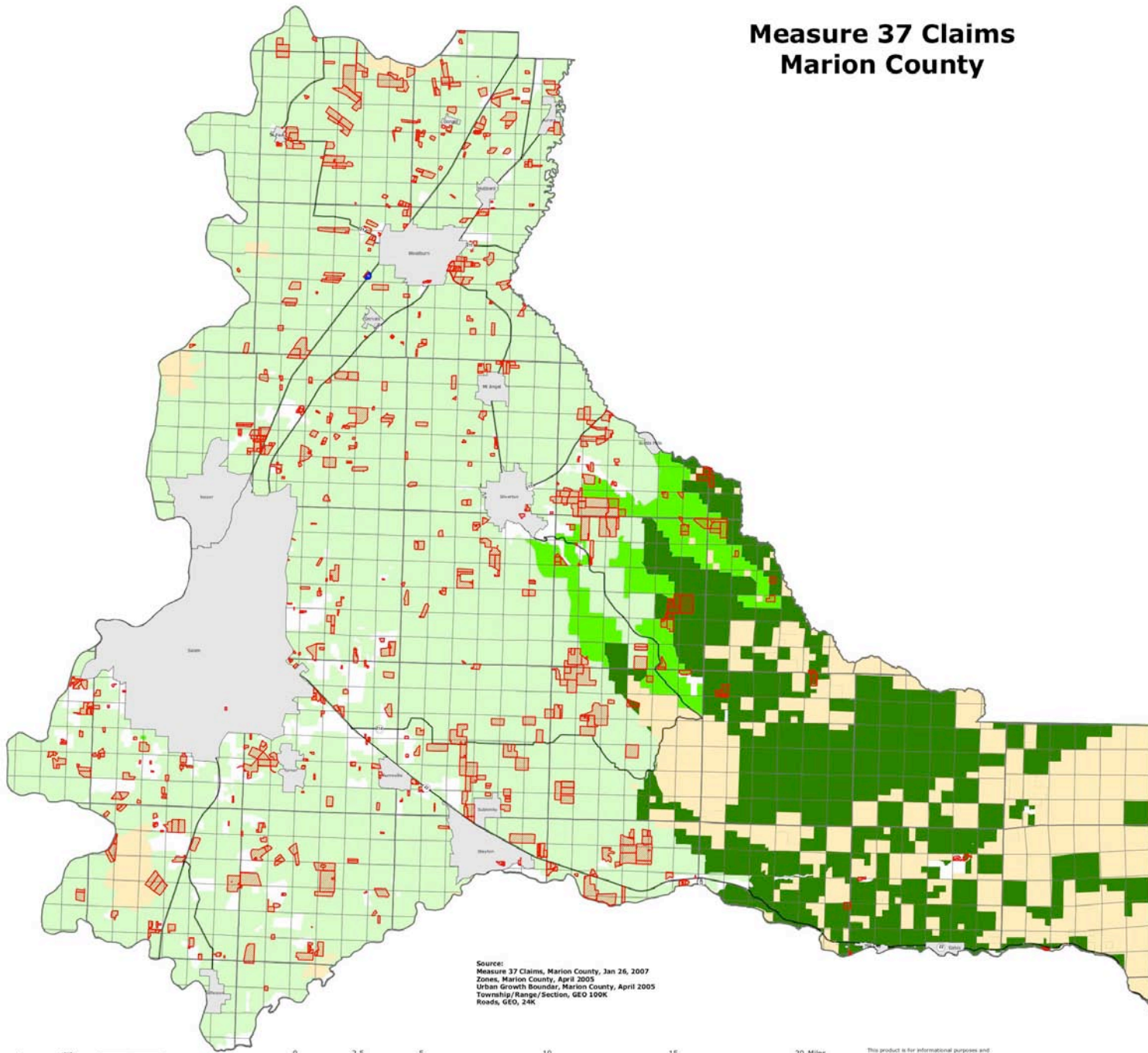


This product is for informational purposes only and may not have been prepared for, or be suitable for, legal, engineering, or other professional uses. Users of this information should consult or contact the primary data and information sources to ascertain the validity of the information.

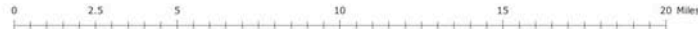
Prepared by: Amblett
 Printing Date: January 29, 2007
 Project#: Oregon Landmark Protection (OLP) 04
 Dataset: North American 1982
 File: C:\GIS\2007\Measure37.mxd



Measure 37 Claims Marion County



Source:
Measure 37 Claims, Marion County, Jan 26, 2007
Zones, Marion County, April 2005
Urban Growth Boundar, Marion County, April 2005
Township/Range/Section, GEO 190K
Roads, GEO, 24K

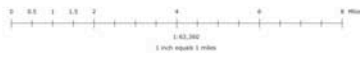
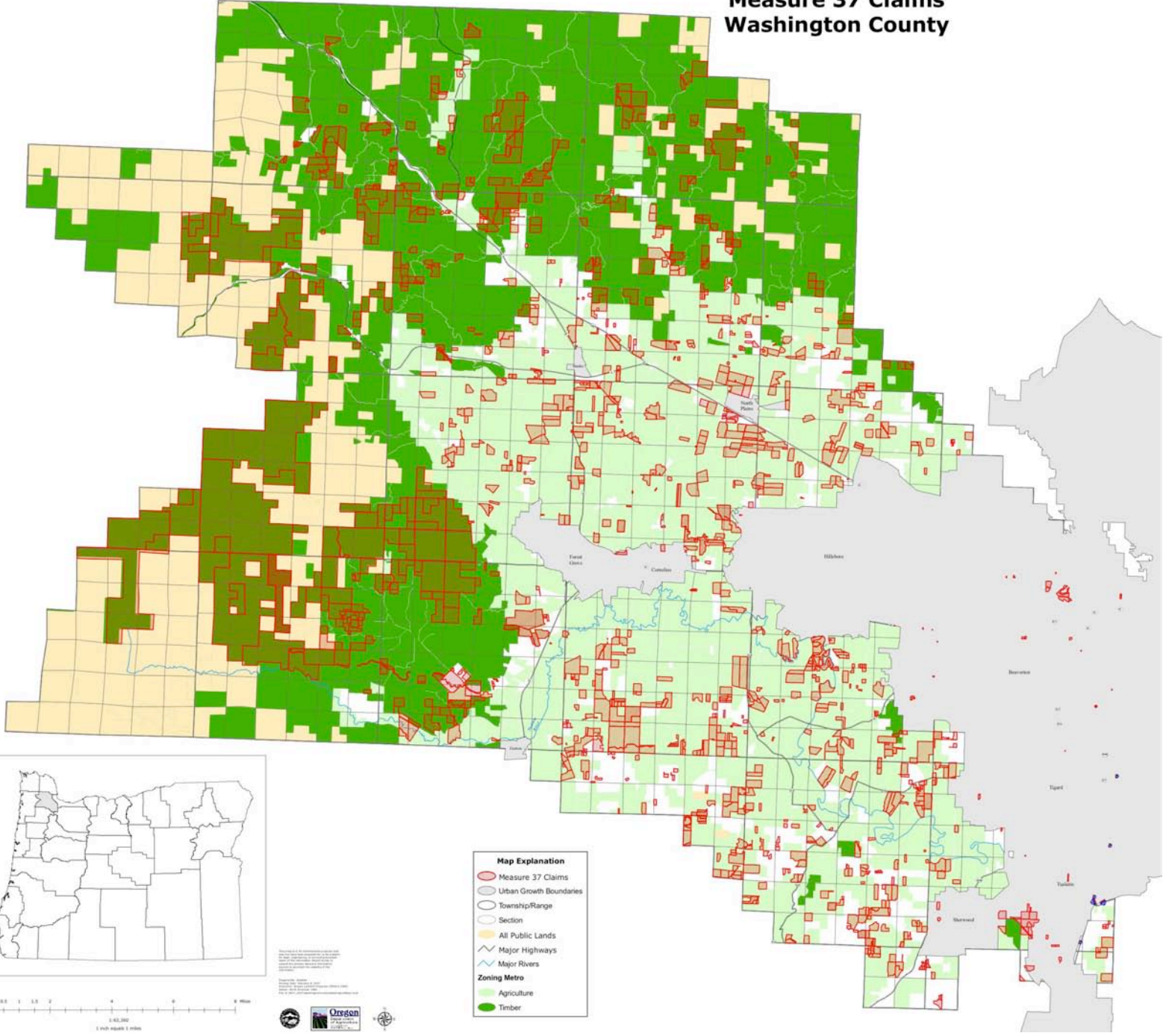


1 inch equals 1.5 miles

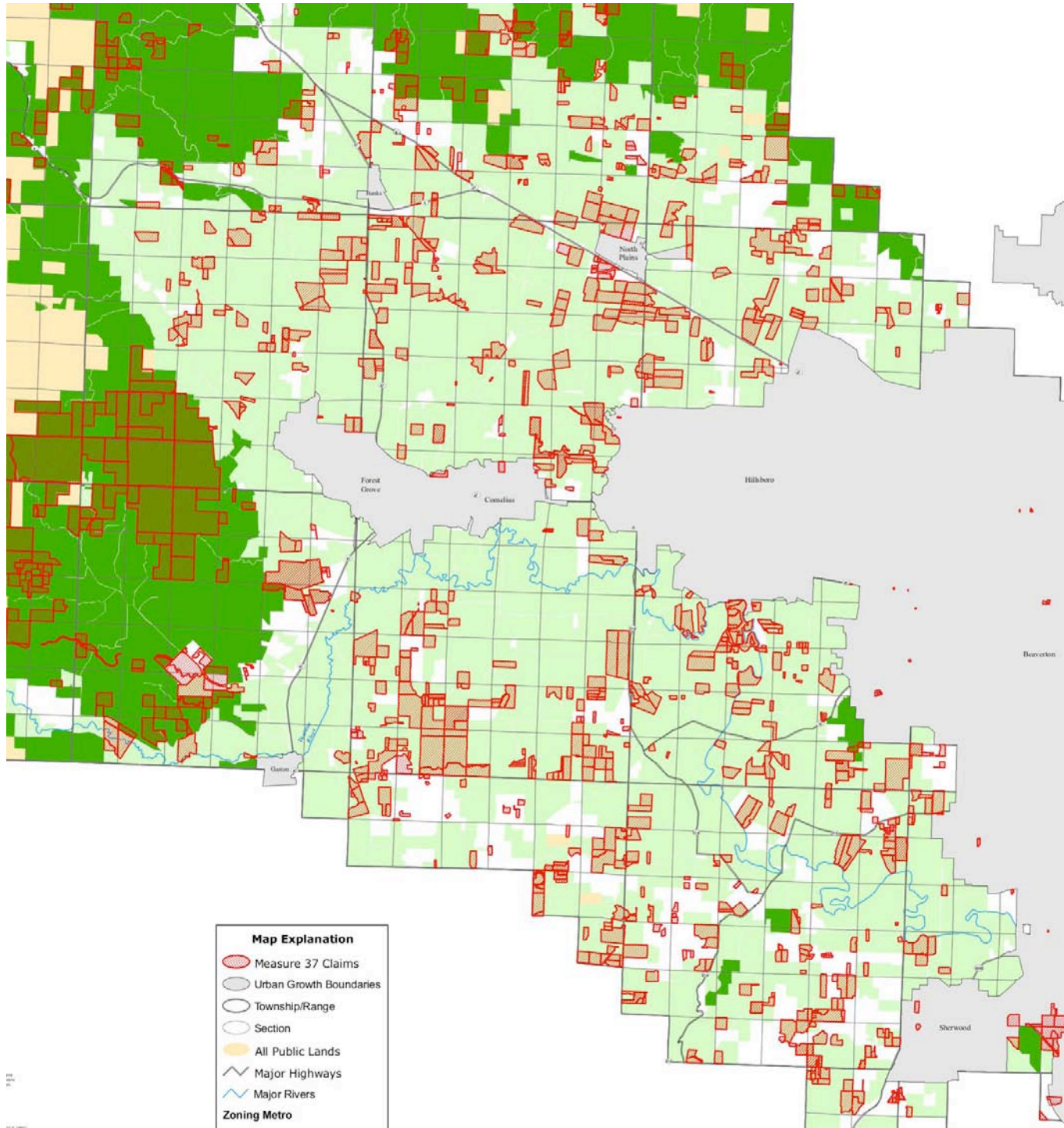
This product is for informational purposes and may not have been prepared for, or be suitable for, legal, engineering, or surveying purposes. Users of this information should review or consult the primary data and information sources to determine the usability of the information.

Prepared By: theallan
Printing Date: January 29, 2007
Projection: Oregon Lambert Projection (EA)
Datum: North American 1983
File: D:\M37_2007\MarionMap1.mxd

Measure 37 Claims Washington County



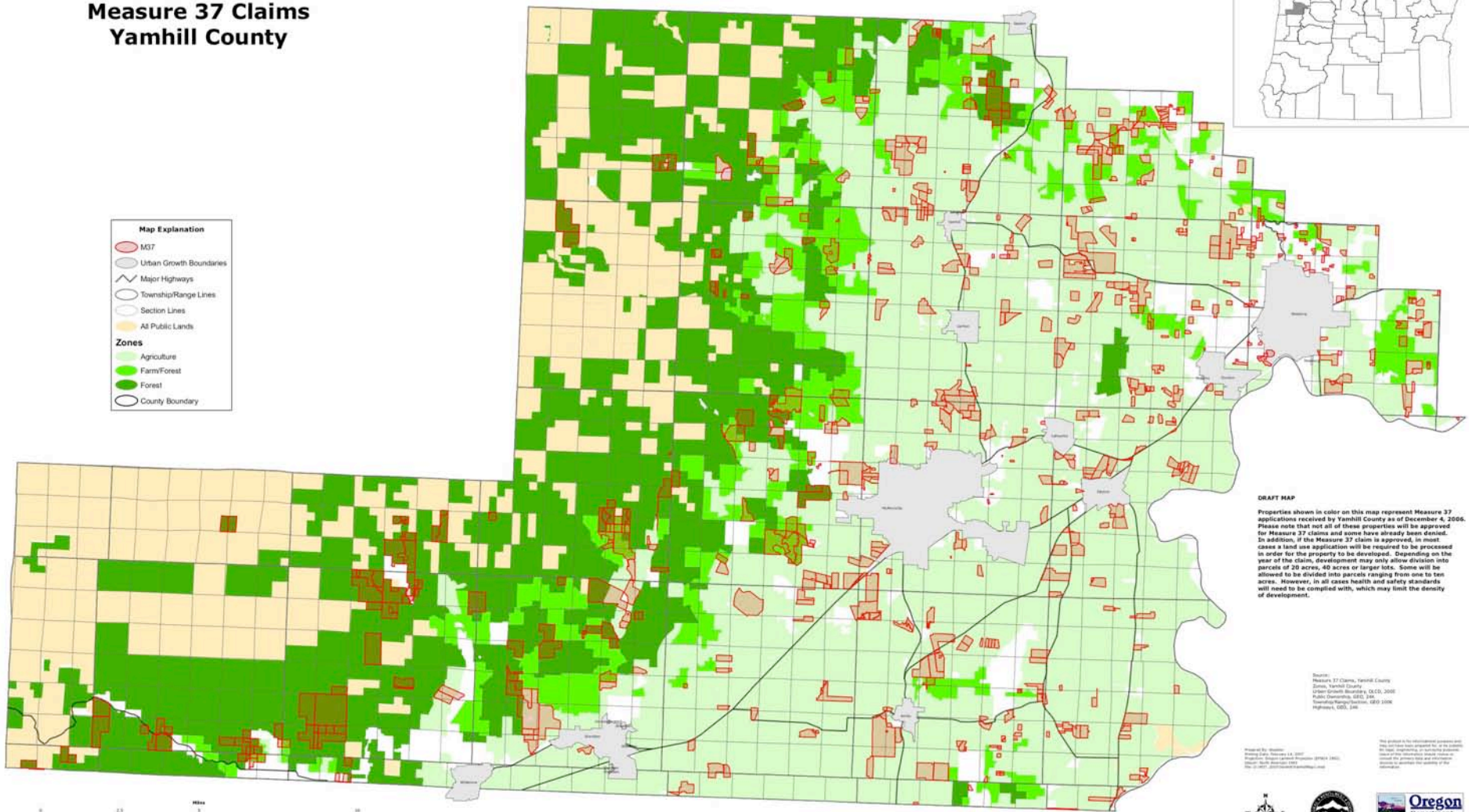
- Map Explanation**
- ▭ Measure 37 Claims
 - Urban Growth Boundaries
 - Township/Range
 - Section
 - All Public Lands
 - Major Highways
 - Major Rivers
 - Zoning Metro**
 - Agriculture
 - Timber



Measure 37 Claims Yamhill County



- Map Explanation**
- M37
 - Urban Growth Boundaries
 - Major Highways
 - Township/Range Lines
 - Section Lines
 - All Public Lands
- Zones**
- Agriculture
 - Farm/Forest
 - Forest
 - County Boundary



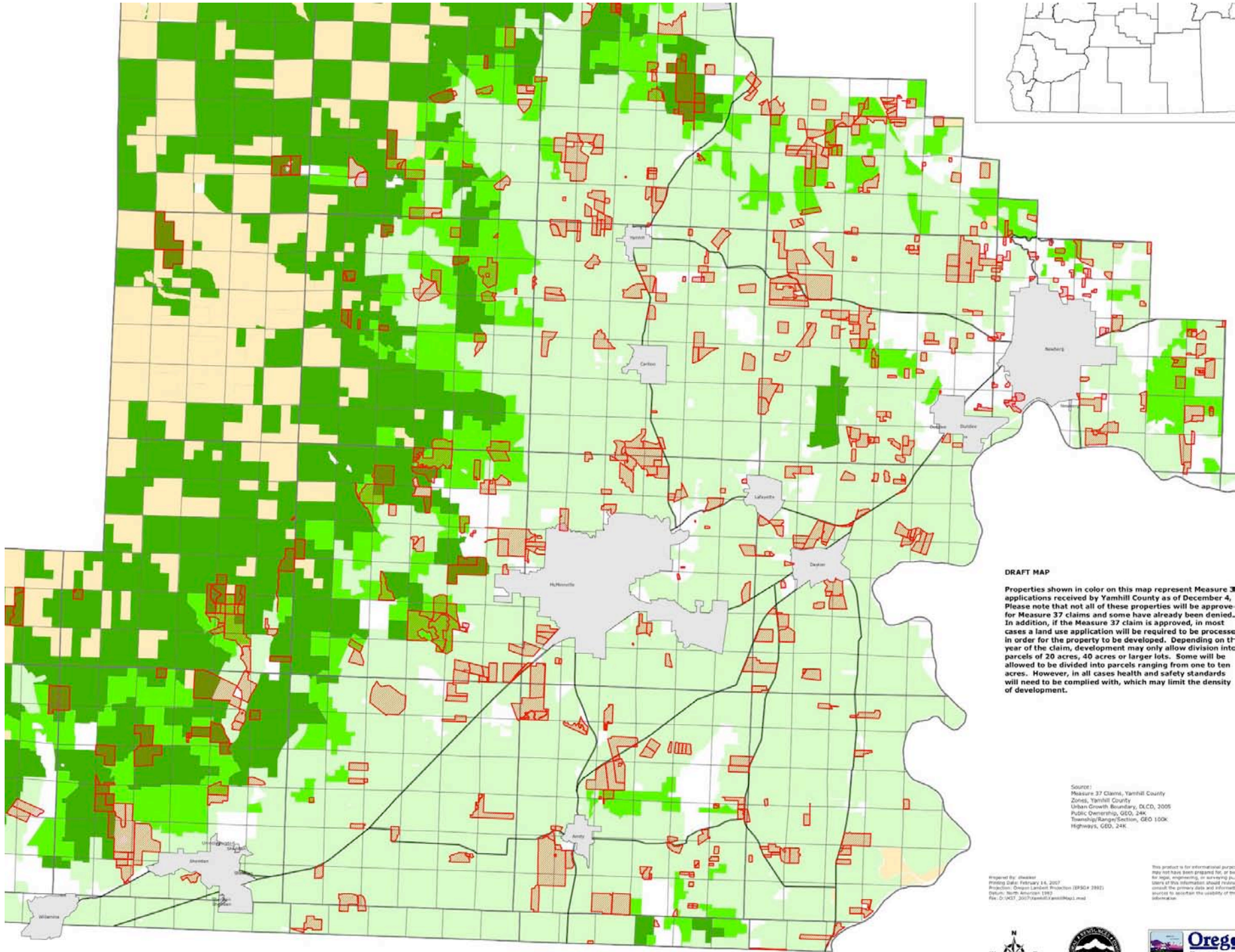
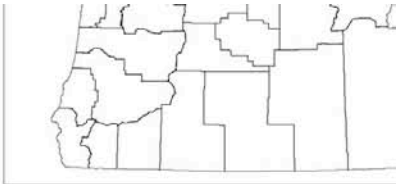
DRAFT MAP

Properties shown in color on this map represent Measure 37 applications received by Yamhill County as of December 4, 2006. Please note that not all of these properties will be approved for Measure 37 claims and some have already been denied. In addition, if the Measure 37 claim is approved, in most cases a land use application will be required to be processed in order for the property to be developed. Depending on the year of the claim, development may only allow division into parcels of 20 acres, 40 acres or larger lots. Some will be allowed to be divided into parcels ranging from one to ten acres. However, in all cases health and safety standards will need to be complied with, which may limit the density of development.

Source:
 Measure 37 Claims, Yamhill County
 James Yamhill County
 Urban Growth Boundary, CL CD, 2006
 Public Ownership, GIS, 200
 Township/Range/Section, SRD 2006
 Highways, GIS, 200

Map by: E. J. ...
 Date: ...
 Scale: ...





DRAFT MAP

Properties shown in color on this map represent Measure 37 applications received by Yamhill County as of December 4. Please note that not all of these properties will be approved for Measure 37 claims and some have already been denied. In addition, if the Measure 37 claim is approved, in most cases a land use application will be required to be processed in order for the property to be developed. Depending on the year of the claim, development may only allow division into parcels of 20 acres, 40 acres or larger lots. Some will be allowed to be divided into parcels ranging from one to ten acres. However, in all cases health and safety standards will need to be complied with, which may limit the density of development.

Source:
Measure 37 Claims, Yamhill County
Zones, Yamhill County
Urban Growth Boundary, D.C.D., 2005
Public Ownership, GEO, 24K
Township/Range/Section, GEO 100K
Highways, GEO, 24K

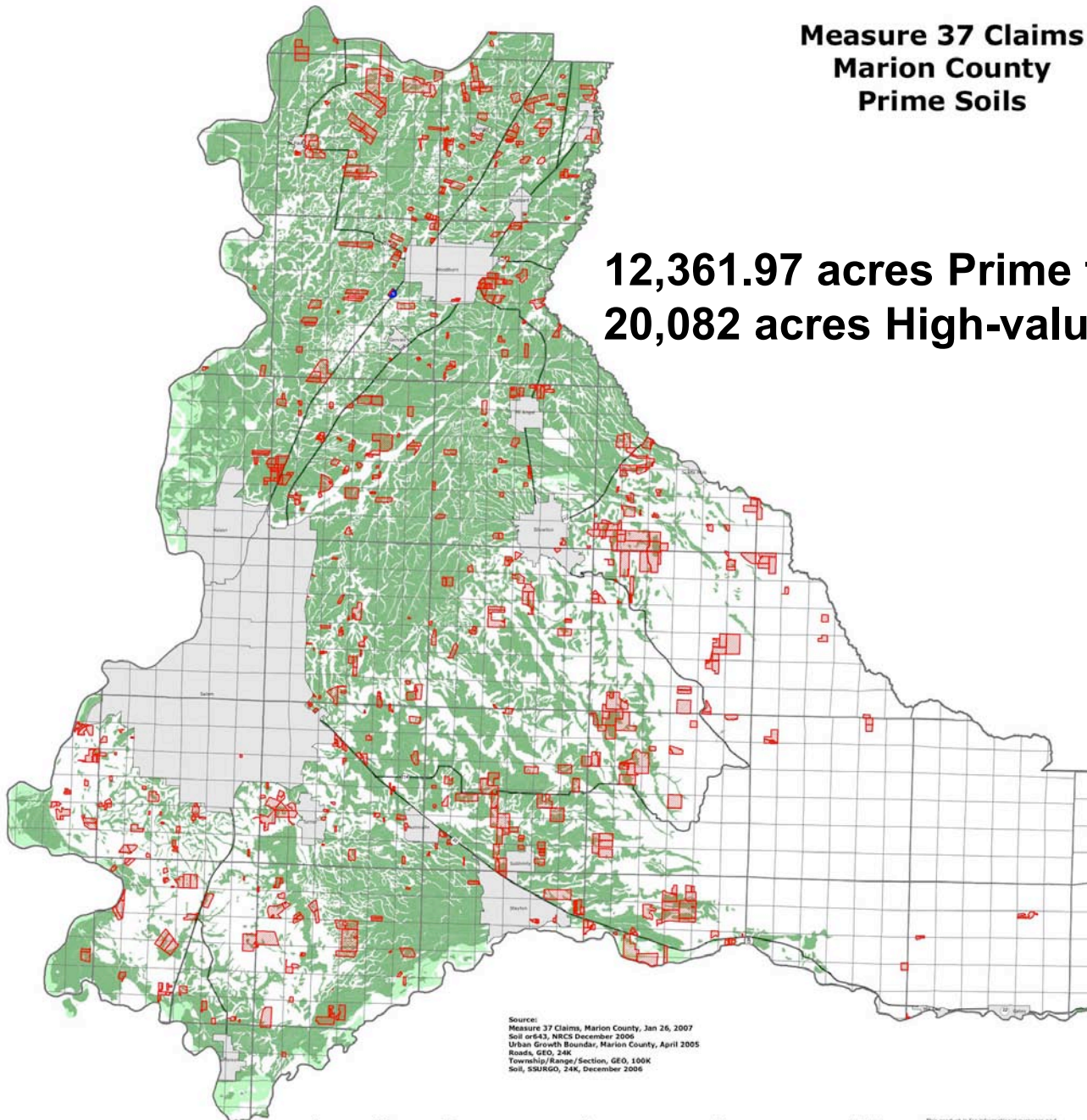
Prepared by: dshelton
Printing Date: February 14, 2007
Projection: Oregon Lambert Projection (EPSG: 3882)
Profile: North American 1983
File: D:\PST_2007\yemahill\pss07map.mxd

This product is for informational purposes only and has not been prepared for, or by, an engineer, architect, or other professional. The user of this information should make their own determination of the accuracy and reliability of the information and should consult a professional to determine the suitability of the information.



**Measure 37 Claims
Marion County
Prime Soils**

**12,361.97 acres Prime farmland soils
20,082 acres High-value farmland soils**

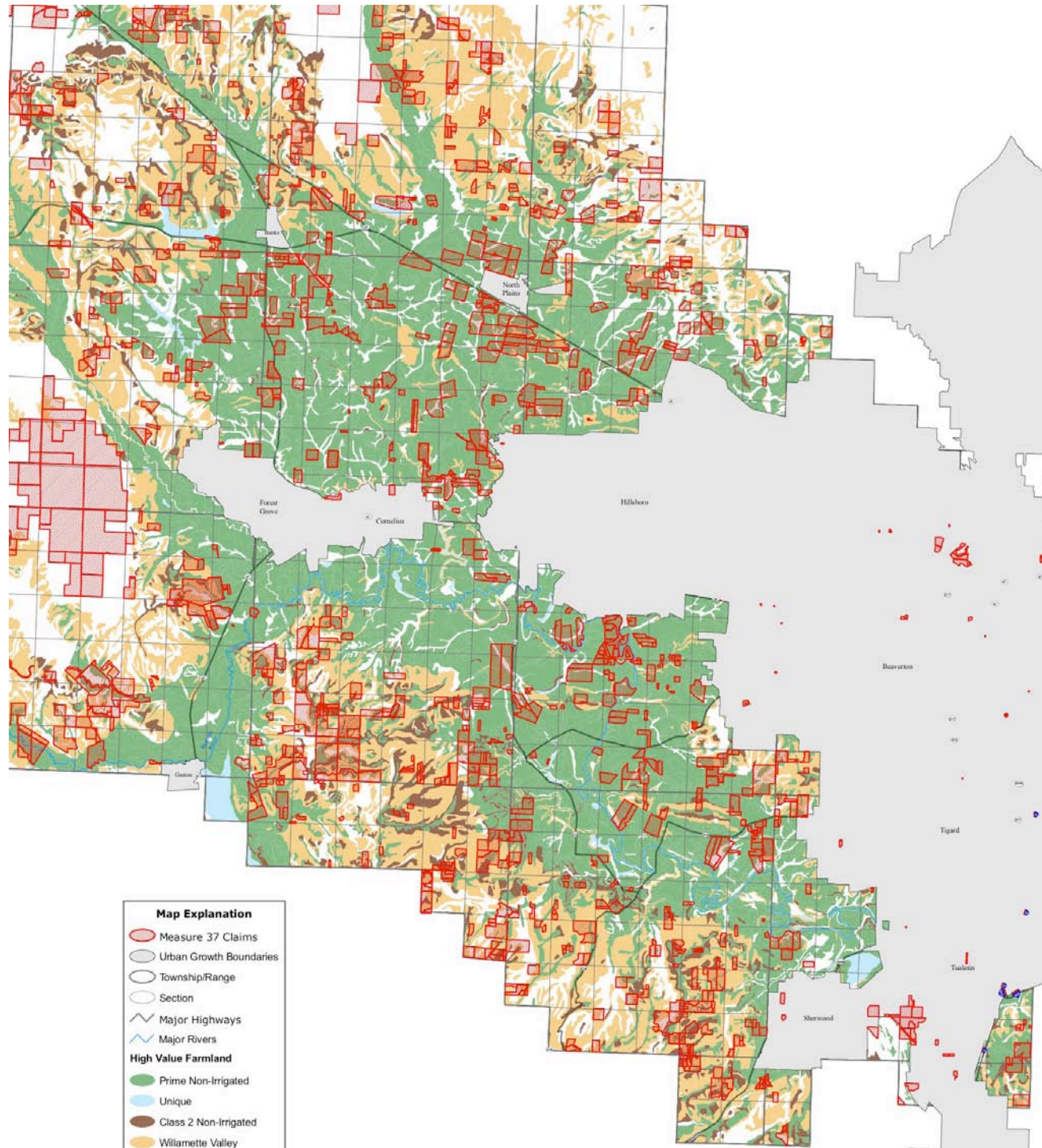












Source:
Measure 37 Claims, Marion County, Jan 26, 2007
Soil 0643, NRCS December 2006
Urban Growth Boundary, Marion County, April 2005
Roads, GEO, 24K
Township/Range/Section, GEO, 100K
Soil, SSURGO, 24K, December 2006



1 inch equals 1.5 miles

This product is for informational purposes and may not have been prepared for, or be suitable for, legal, engineering, or surveying purposes. Users of this information should review or consult the primary data and information sources to ascertain the suitability of the information.



- Map Explanation**
-  Measure 37 Claims
 -  Urban Growth Boundaries
 -  Township/Range
 -  Section
 -  Major Highways
 -  Major Rivers
- High Value Farmland**
-  Prime Non-Irrigated
 -  Unique
 -  Class 2 Non-Irrigated
 -  Willamette Valley

Measure 37 Claims Yamhill County Groundwater

Map Explanation

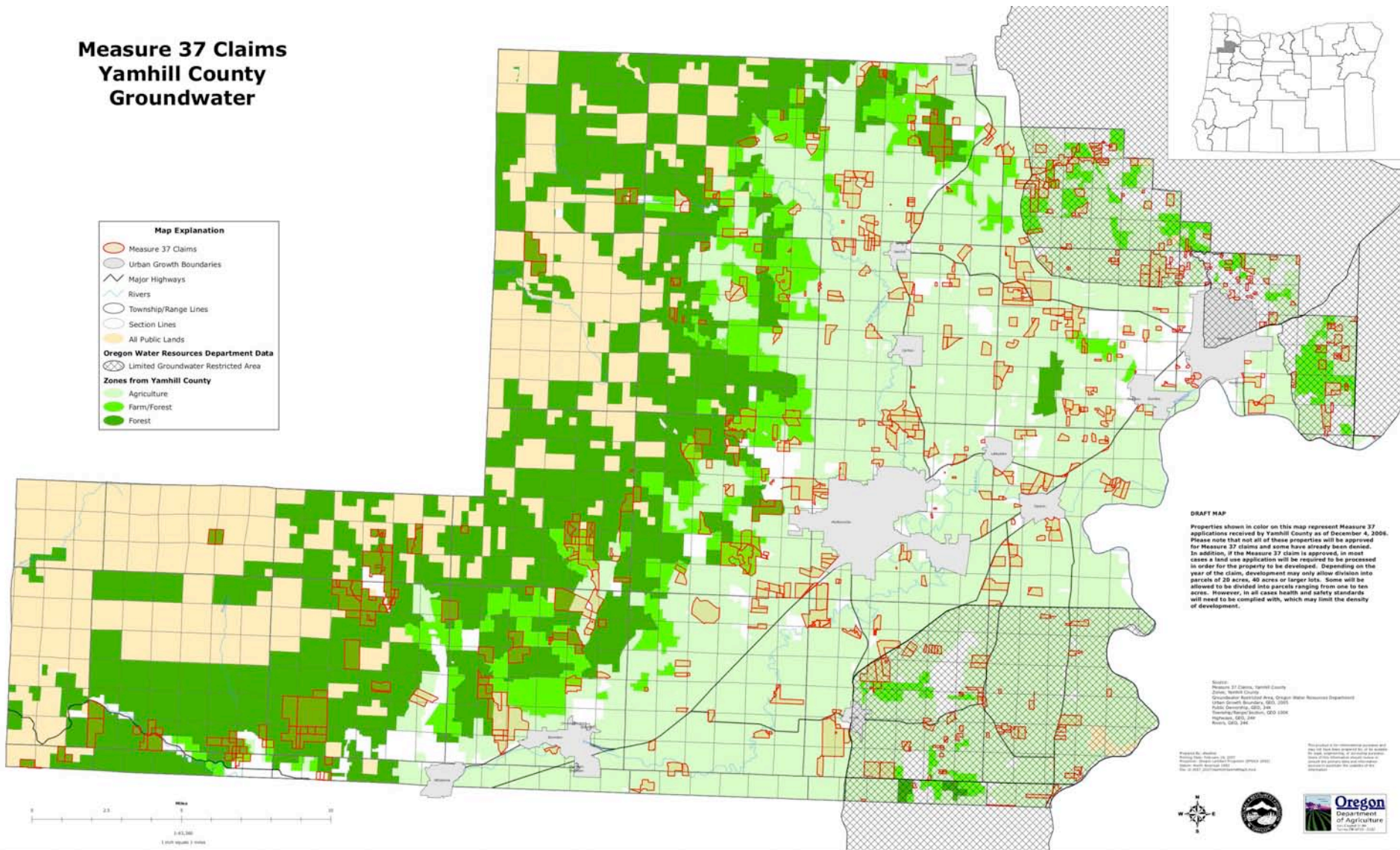
- Measure 37 Claims
- Urban Growth Boundaries
- Major Highways
- Rivers
- Township/Range Lines
- Section Lines
- All Public Lands

Oregon Water Resources Department Data

- Limited Groundwater Restricted Area

Zones from Yamhill County

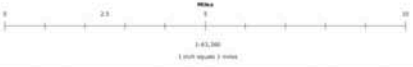
- Agriculture
- Farm/Forest
- Forest



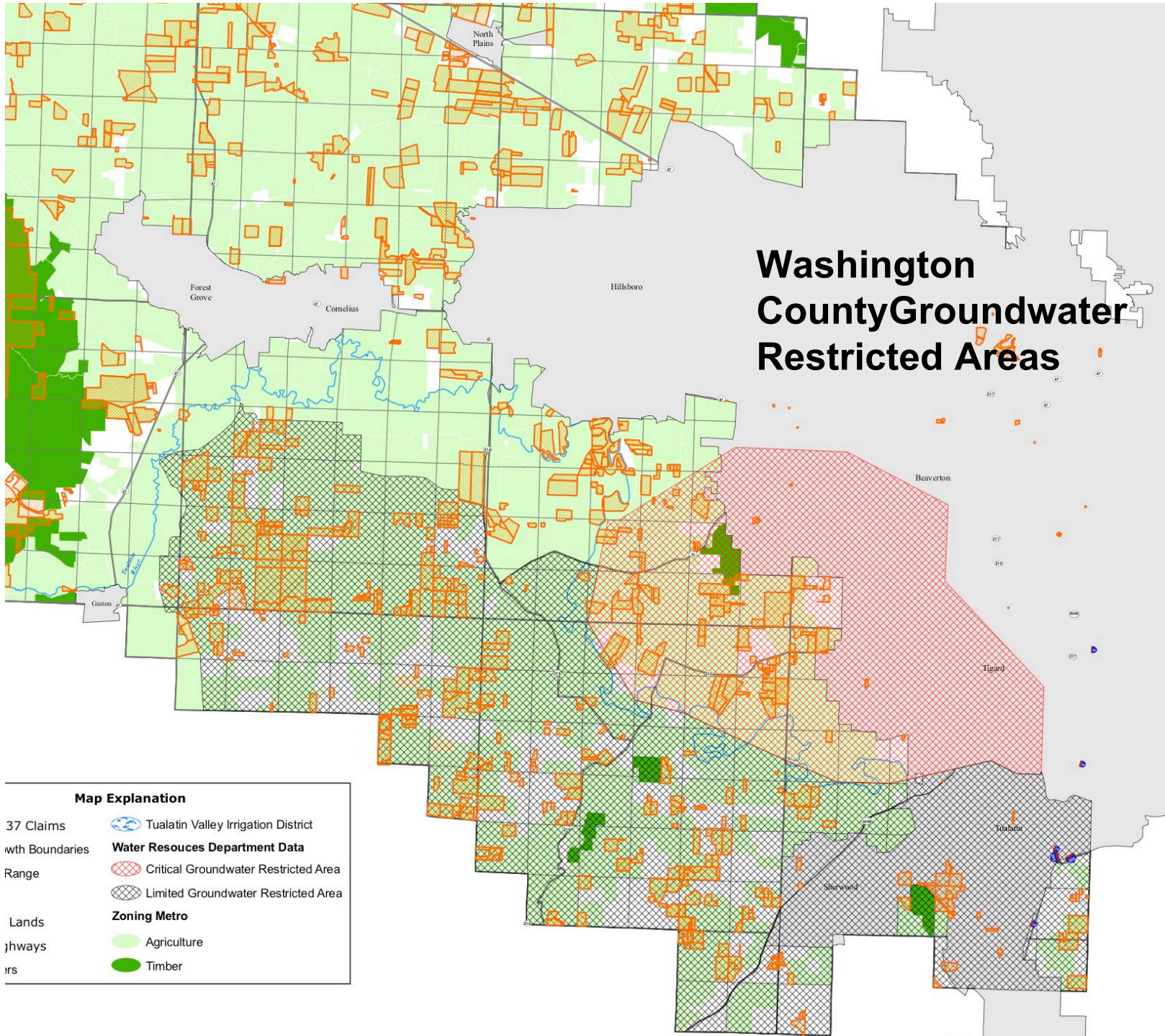
DRAFT MAP

Properties shown in color on this map represent Measure 37 applications received by Yamhill County as of December 4, 2008. Please note that not all of these properties will be approved for Measure 37 claims and some have already been denied. In addition, if the Measure 37 claim is approved, in most cases a land use application will be required to be processed in order for the property to be developed. Depending on the year of the claim, development may only allow division into parcels of 20 acres, 40 acres or larger lots. Some will be allowed to be divided into parcels ranging from one to ten acres. However, in all cases health and safety standards will need to be complied with, which may limit the density of development.

Source:
 Measure 37 Claims, Yamhill County
 2008, Yamhill County
 Geographic Information System, Oregon Water Resources Department
 Data Source: Measure 37, 2008
 Public Domain, GIS, 2008
 Measure 37 Claims, GIS, 2008
 Highway, GIS, 2008
 Rivers, GIS, 2008



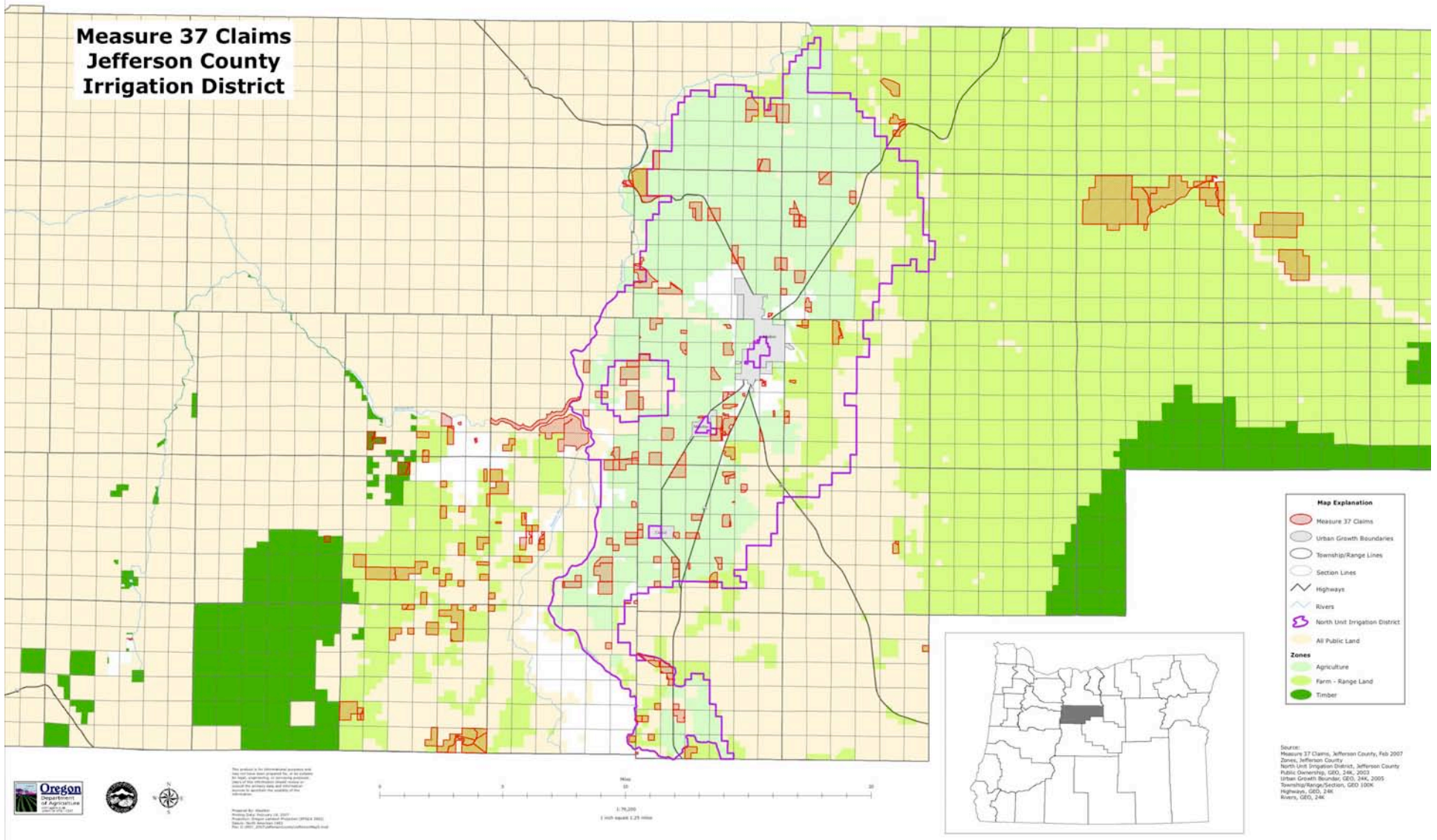
Washington County Groundwater Restricted Areas



Map Explanation

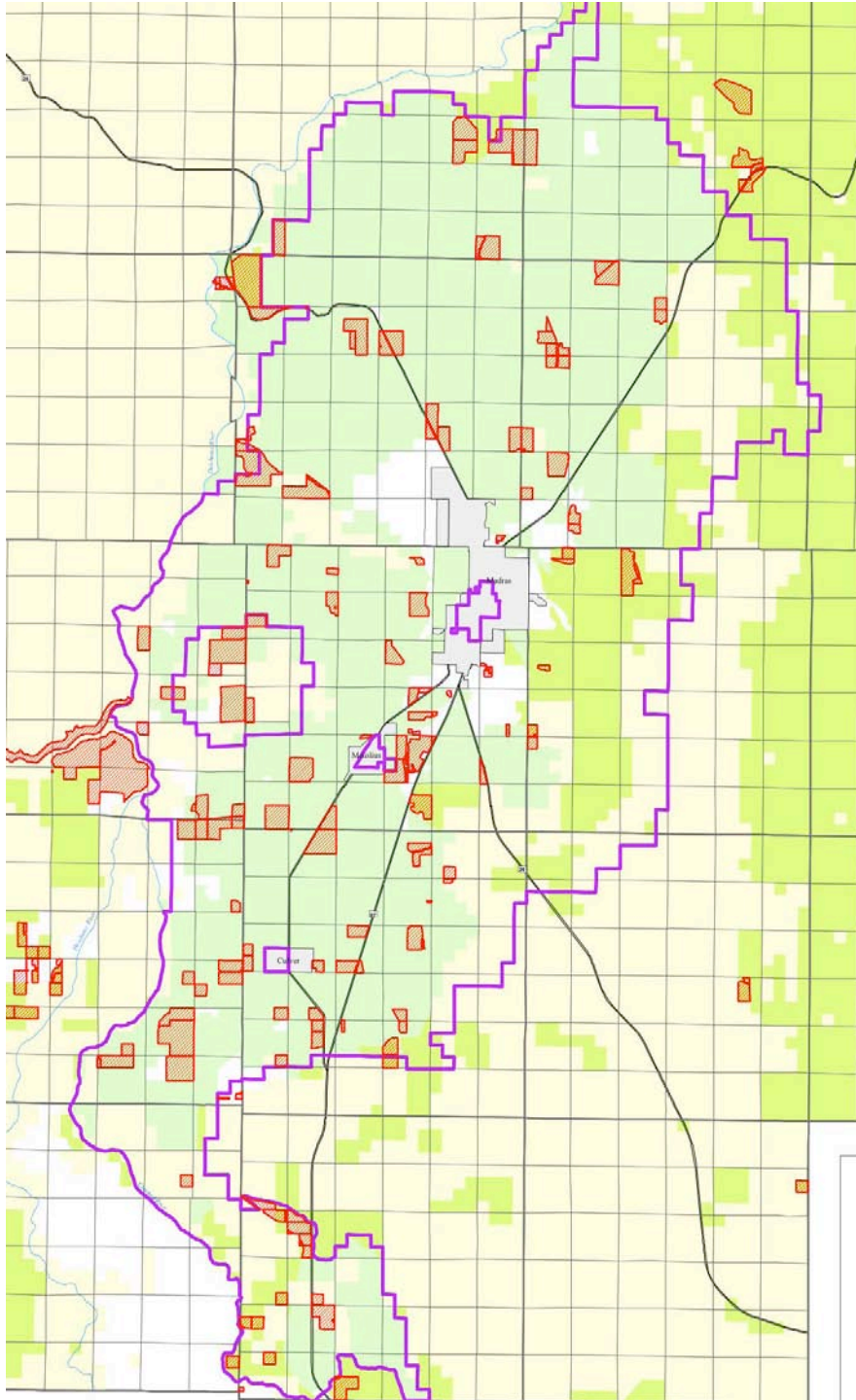
- 37 Claims with Boundaries Range
 - Lands
 - hways
 - rs
- Tualatin Valley Irrigation District
 - Water Resources Department Data**
 - Critical Groundwater Restricted Area
 - Limited Groundwater Restricted Area
 - Zoning Metro**
 - Agriculture
 - Timber

**Measure 37 Claims
Jefferson County
Irrigation District**



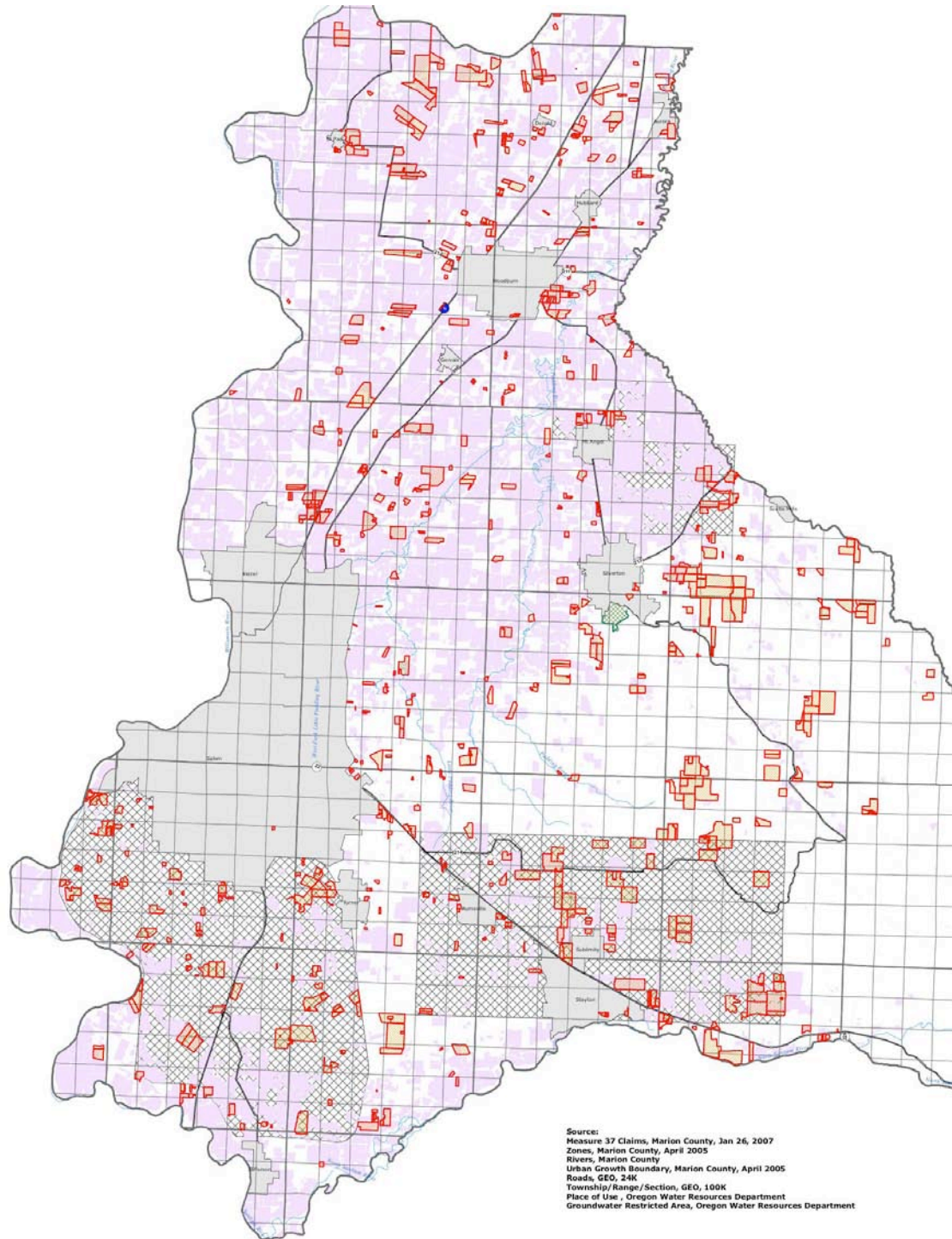
34.8% = EFU
59.8% = Rangeland

8,238.65 acres
14,132.88 acres



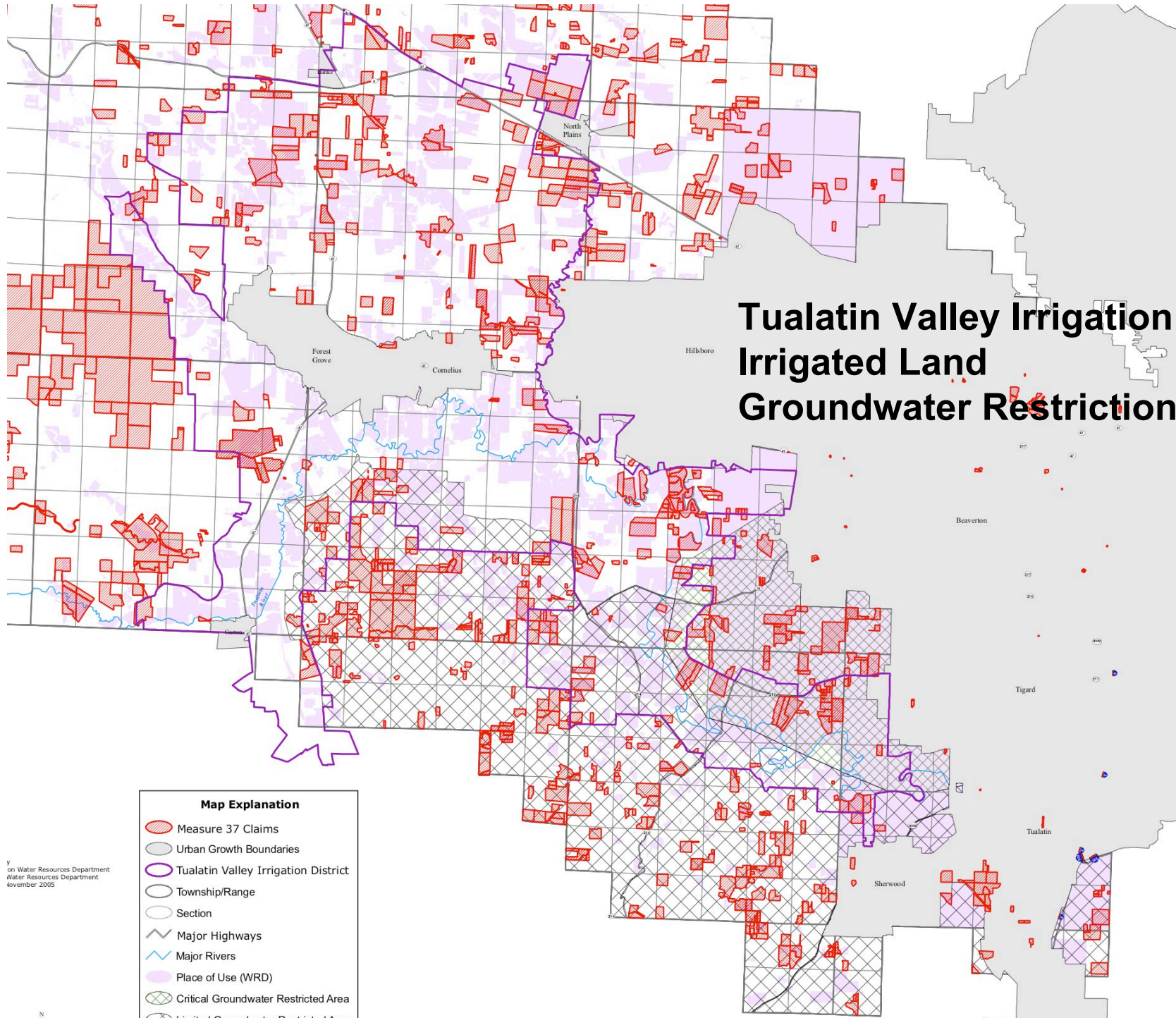
**North Unit Irrigation
District M37 Claims**

7,731.44 acres



Source:
Measure 37 Claims, Marion County, Jan 26, 2007
Zones, Marion County, April 2005
Rivers, Marion County
Urban Growth Boundary, Marion County, April 2005
Roads, GEO, 24K
Township/Range/Section, GEO, 100K
Place of Use, Oregon Water Resources Department
Groundwater Restricted Area, Oregon Water Resources Department

Tualatin Valley Irrigation District Irrigated Land Groundwater Restrictions



Map Explanation

- Measure 37 Claims
- Urban Growth Boundaries
- Tualatin Valley Irrigation District
- Township/Range
- Section
- Major Highways
- Major Rivers
- Place of Use (WRD)
- Critical Groundwater Restricted Area
- Limited Groundwater Restricted Area

by
on Water Resources Department
Water Resources Department
November 2005



Celebrating 75 years!

Jim Johnson
Land Use and Water Planning Coordinator
Oregon Department of Agriculture
<http://www.oregon.gov/ODA/>

