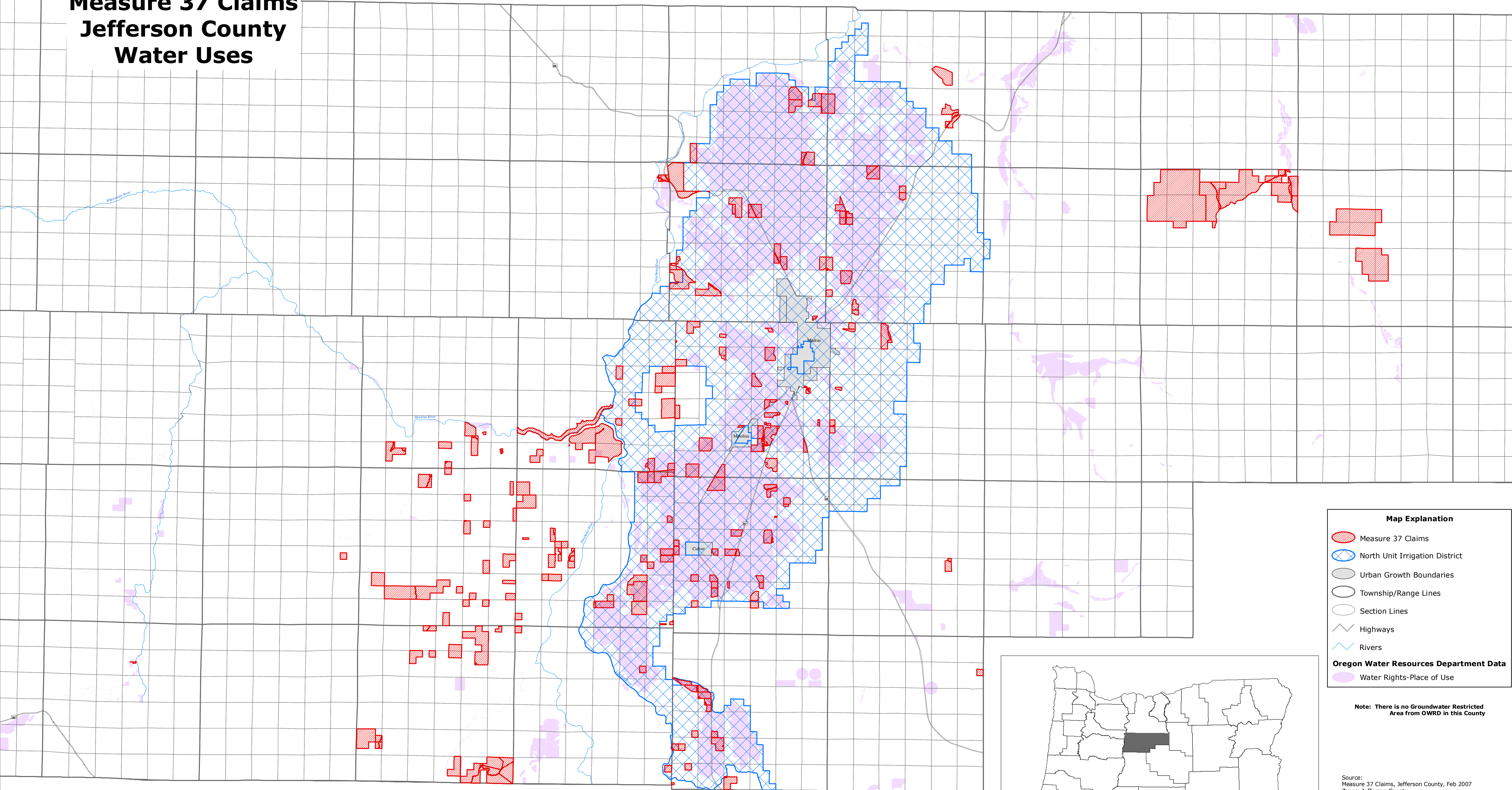


Measure 37 Claims Jefferson County Water Uses



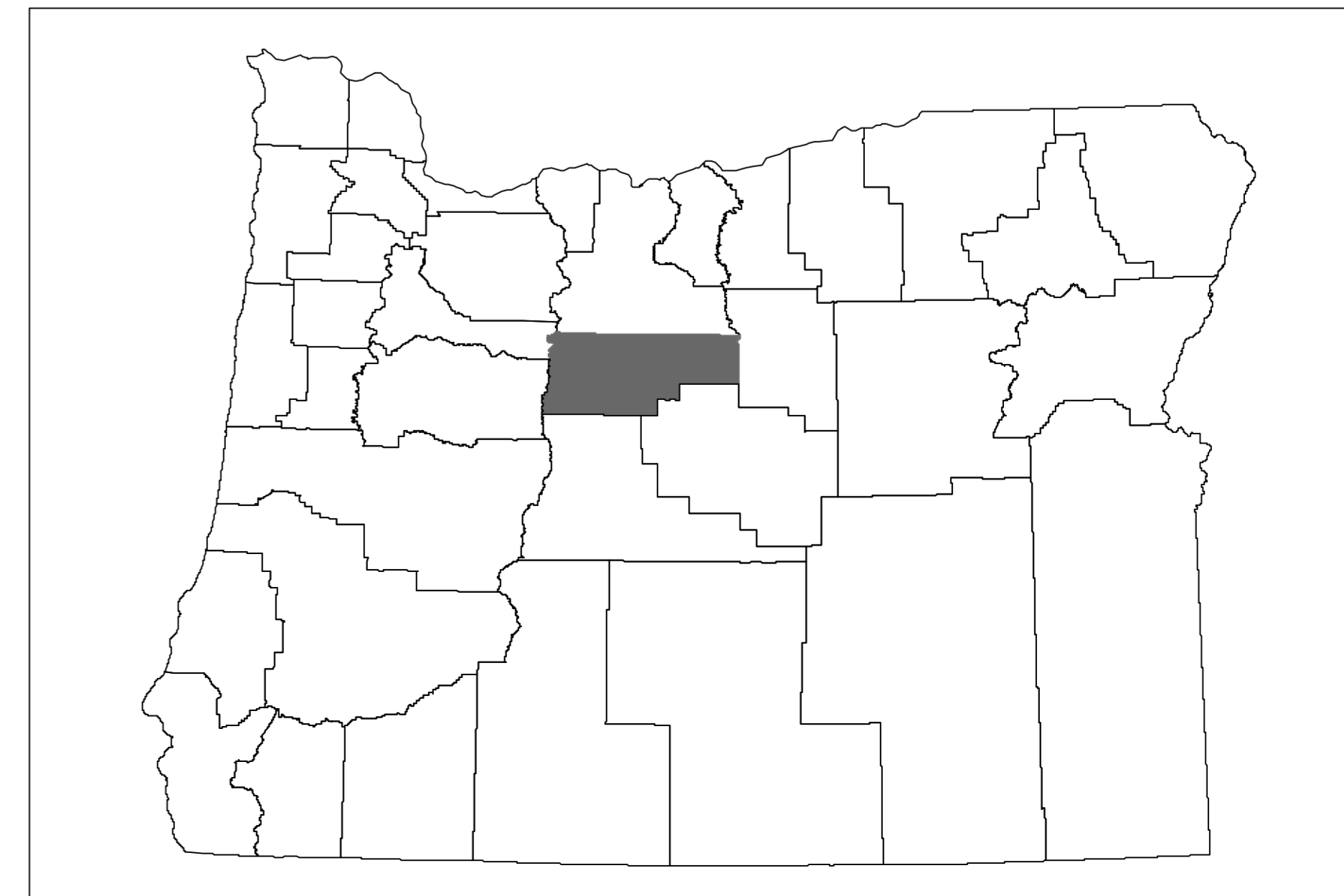
Map Explanation

- Measure 37 Claims
- North Unit Irrigation District
- Urban Growth Boundaries
- Township/Range Lines
- Section Lines
- Highways
- Rivers

Oregon Water Resources Department Data

- Water Rights-Place of Use

Note: There is no Groundwater Restricted Area from OWRD in this County



Source:
 Measure 37 Claims, Jefferson County, Feb 2007
 Zones, Jefferson County
 Irrigation District, Jefferson County
 Water Rights - Place of Use, OR Water Resources Department
 Public Ownership, GEO, 24K, 2003
 Urban Growth Boundary, GEO, 24K, 2005
 Township/Range/Section, GEO 100K
 Highways, GEO, 24K
 Rivers, GEO, 24K

This product is for informational purposes and may not have been prepared for, or be suitable for, legal, engineering, or surveying purposes. Users of this information should review or consult the primary data and information sources to ascertain the usability of the information.

Prepared By: dlwalker
 Printing Date: February 18, 2007
 Projection: Oregon Lambert Projection (EPSG # 2992)
 Datum: North American 1983
 File: D:\367_2007\JeffersonCounty\JeffersonMap3a.mxd

