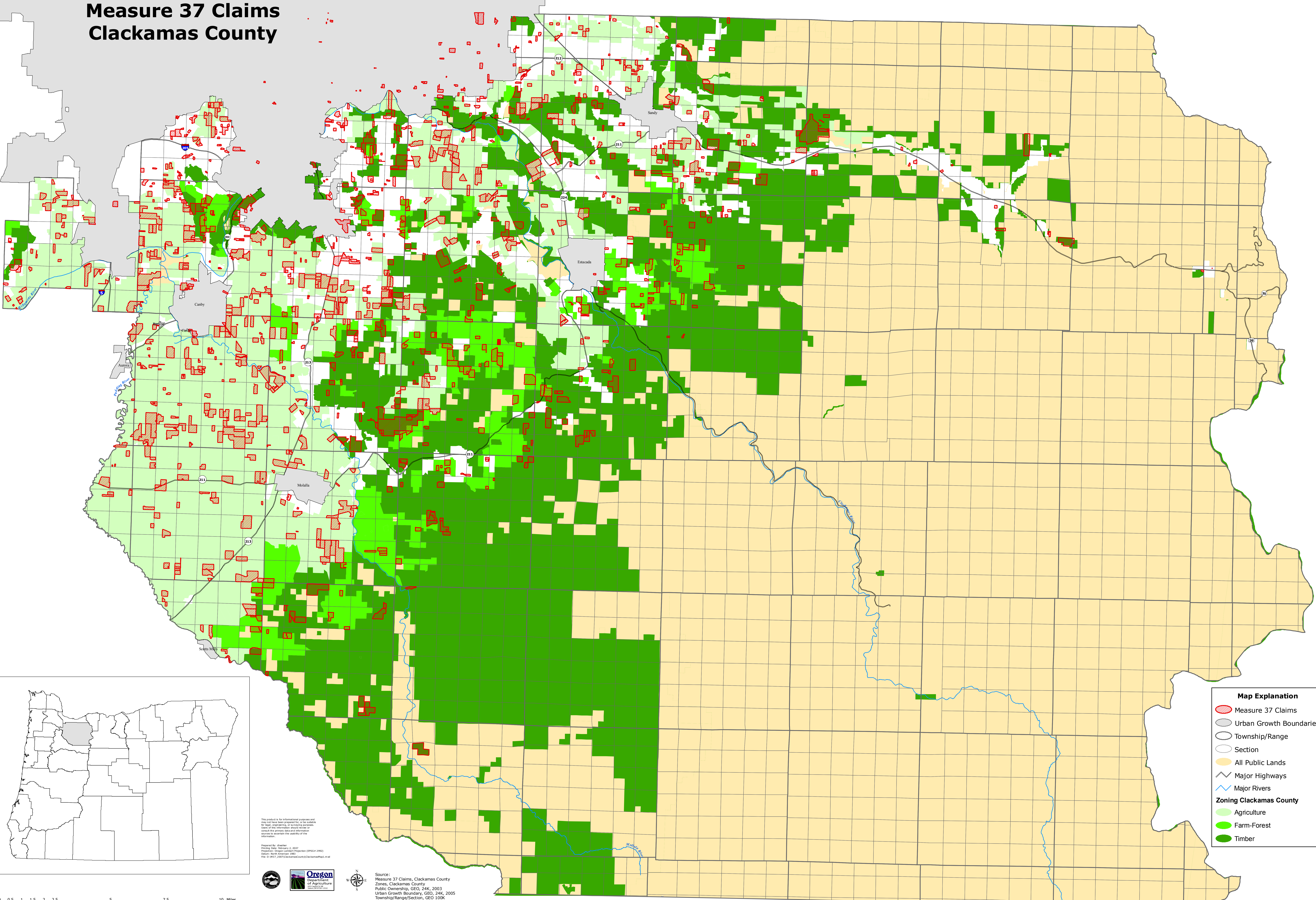


Measure 37 Claims Clackamas County

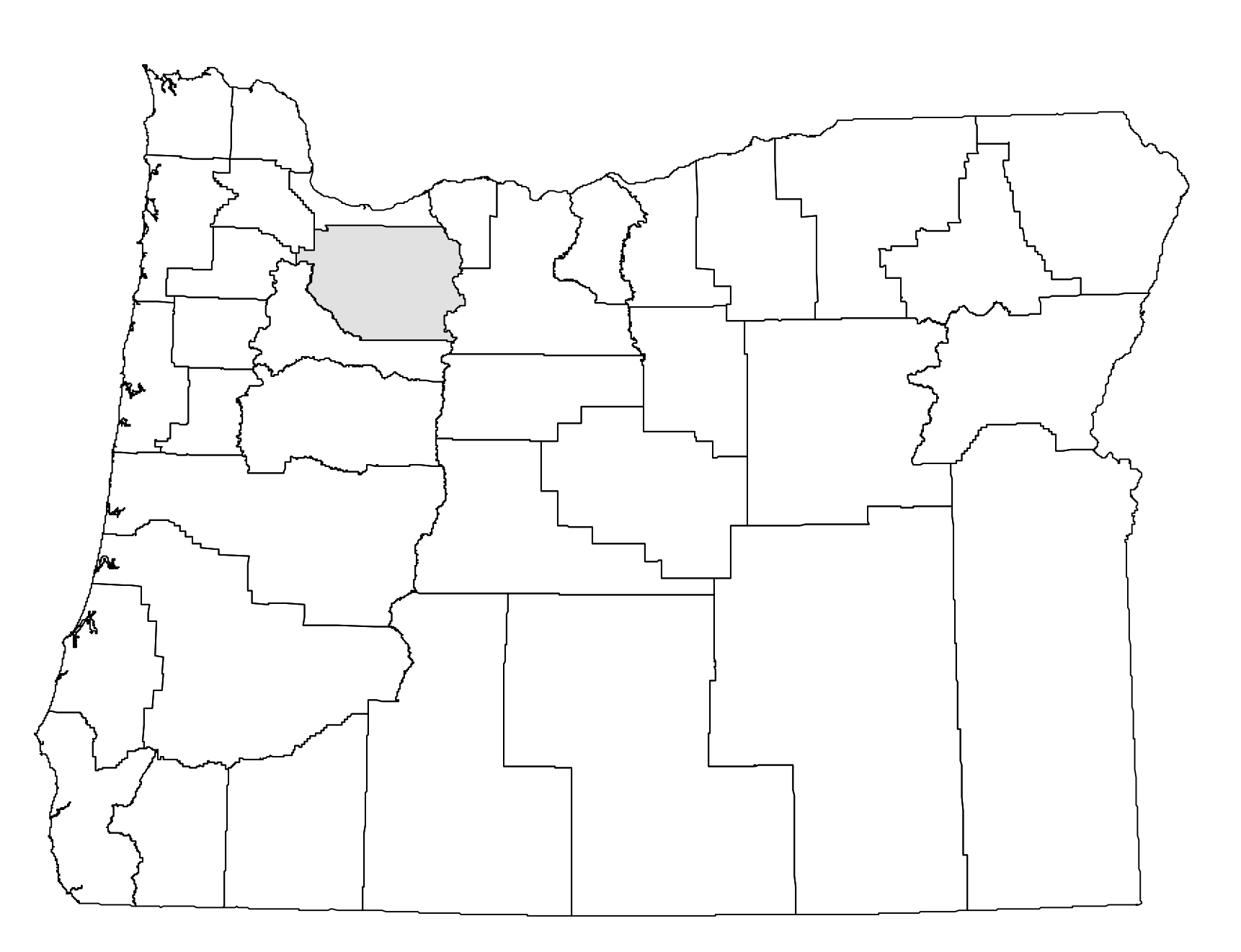


Map Explanation

- Measure 37 Claims
- Urban Growth Boundaries
- Township/Range
- Section
- All Public Lands
- Major Highways
- Major Rivers

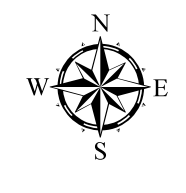
Zoning Clackamas County

- Agriculture
- Farm-Forest
- Timber



This product is for informational purposes and has not been prepared for, or is subject to, legal proceedings or any other legal action. Users of the information should review or consult the primary data and information sources to determine the quality of the information.

Prepared By: dswalker
 Project Name: Measure 37, 2007
 Project No.: Oregon Landform Projection (EPSG 4326)
 Datum: North American 83
 File: D:\903_2007\ClackamasCounty\ClackamasMap21.mxd



Source:
 Measure 37 Claims, Clackamas County
 Zoning, Clackamas County
 Public Ownership, GEO, 24K, 2003
 Urban Growth Boundary, GEO, 24K, 2005
 Township/Range/Section, GEO 100K
 Highways, GEO, 24K
 Rivers, GEO, 24K

