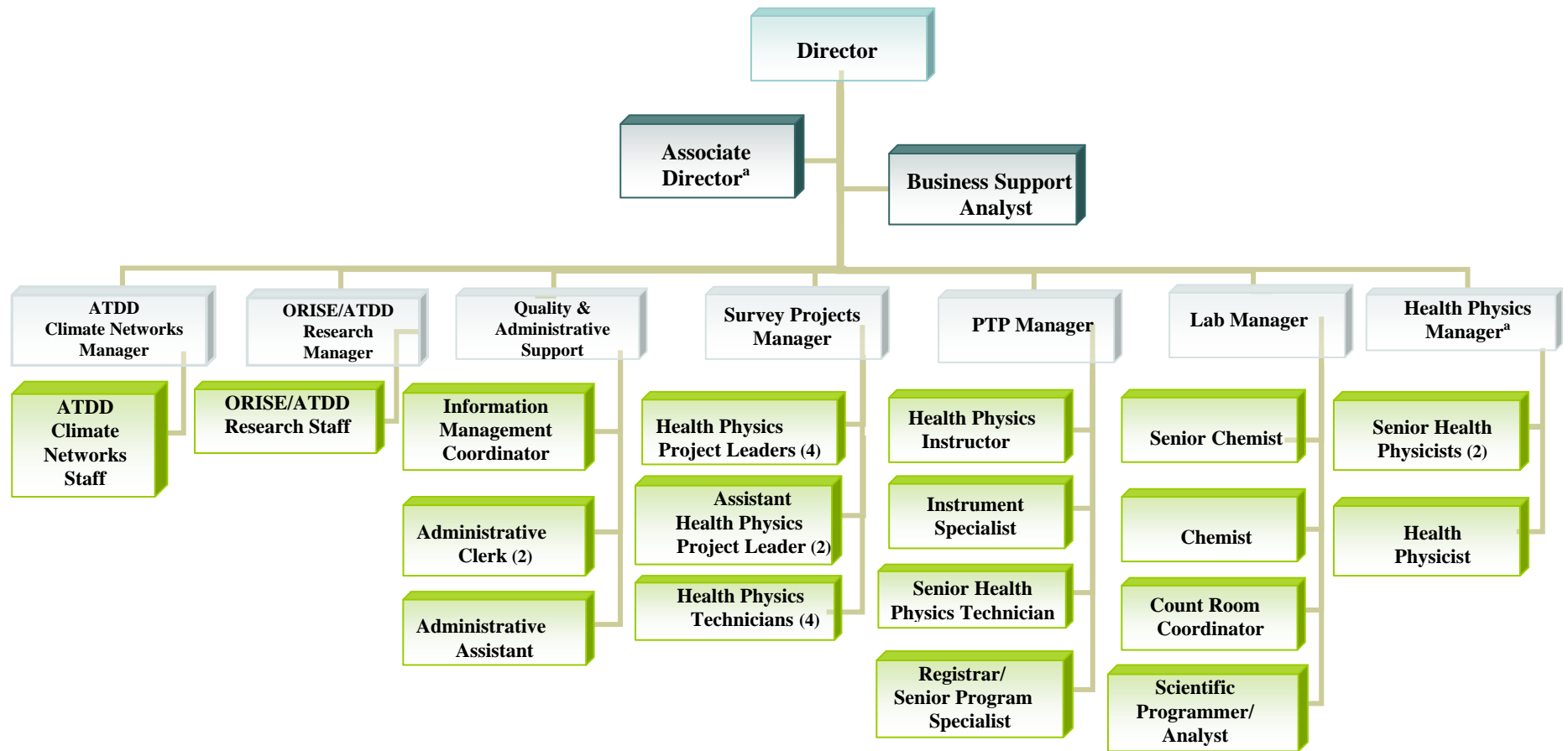


ORGANIZATION AND RESPONSIBILITIES

The figure on page 2 indicates the organizational structure of the ORISE Independent Environmental Assessment and Verification Program. Within that structure it is the responsibility of the laboratory staff to assure that these procedures are followed by those performing analyses and to continually evaluate analytical results for accuracy and precision. Under the direction of the Laboratory Manager, the laboratory staff members develop new procedures, review this manual annually, and initiate revisions as needed.

It is the responsibility of each analyst conducting these procedures to abide by all aspects and details presented in this manual and to report deviations or abnormal results to the responsible supervisor.

The Laboratory Manager reviews and approves laboratory procedures and provides interpretations of and authorizes deviations from these procedures when appropriate.



^aDual role: Associate Director/Health Physics Manager