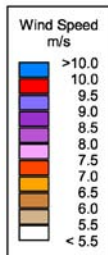
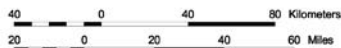
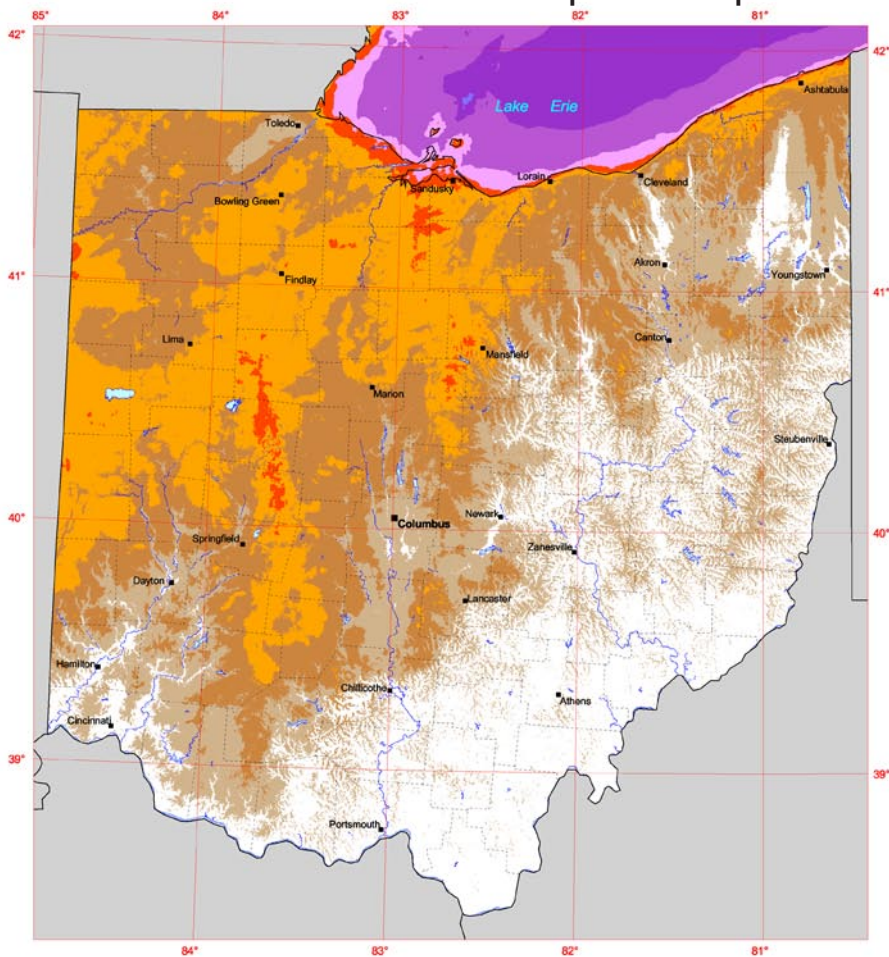


Ohio 70-Meter Wind Speed Map



Not Validated

The data for this map was produced by AWS TrueWind using the Mesomap system and historical weather data.



U.S. Department of Energy
National Renewable Energy Laboratory

This resource map shows wind speed estimates at 70 meters above the ground and depicts the resource that could be used for utility-scale wind development. In general, annual wind speeds of 7.0 meters per second (m/s) to 7.5 m/s and greater can be considered useful for generating power with large turbines, though the exact amount of available wind power depends on site elevation and the distribution of the wind speeds. Particular locations with speeds less than 7.0 m/s could have useful resource at 80 meters and higher because of high wind shear.

Wind Energy Information Sources

Ohio Wind Working Group

Tom Maves, Ohio Department of Development
77 S. High St., 26th Floor
Columbus, OH 43215
(614) 466-8425
tmaves@odod.state.oh.us
www.ohiowind.org

Green Energy Ohio

Kemp Jaycox, Wind Program Manager
7870 Olentangy River Road, Suite 209
Columbus, OH 43235
(513) 833-7405
(866) GREEN OH
kemp@greenenergyohio.org

American Wind Energy Association

1101 14th St. NW, 12 Floor
Washington, D.C. 20005
(202) 383-2500
windmail@awea.org
www.awea.org

National Renewable Energy Laboratory/National Wind Technology Center

1617 Cole Blvd.
Golden, CO 80401
(303) 275-4090
public_affairs@nrel.gov
www.nrel.gov/wind

National Wind Coordinating Collaborative

c/o RESOLVE
1255 23rd St. NW, Ste. 275
Washington, D.C. 20037
Toll free: (888) 764-WIND (9463)
nwcc@resolv.org
www.nationalwind.org

Utility Wind Integration Group

PO Box 2787
Reston, VA 20195
(865) 691-5540, ext. 141
sandy@uwig.org
www.uwig.org

Windustry

2105 First Ave. South
Minneapolis, MN 55404
Toll-free: (800) 946-3640
info@windustry.org
www.windustry.org



www.windpoweringamerica.gov