

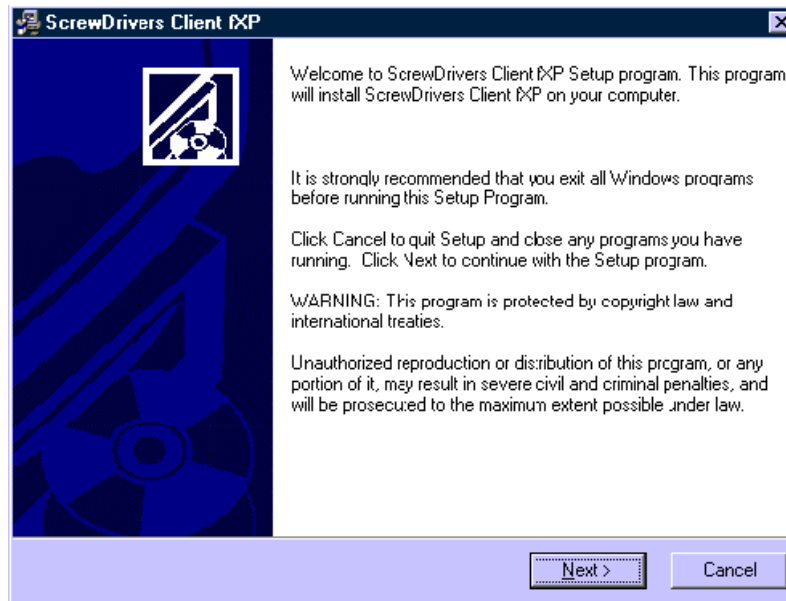
Screw Driver Client Installation Documentation

Windows

Step 1) After you have downloaded the Screwdrivers client software from the NRC web site to your workstation. Locate the file "ScrewDrivers Client fXP 2.1.05.03 (rdp5 ica6).exe" (using My Computer or Windows Explorer) and run it by double clicking on it. . (Fig. 1)

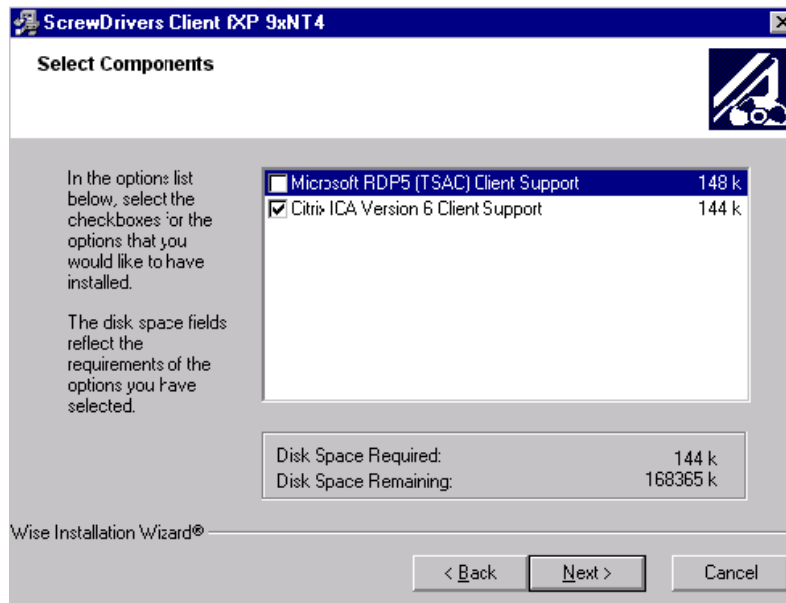


(Fig. 1)



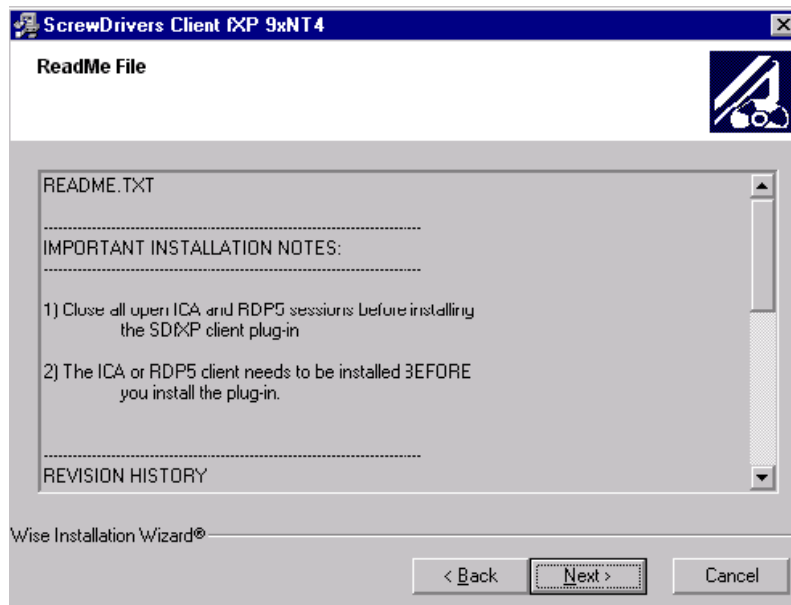
Step 2 - Click on "Next" (Fig. 2).

(Fig. 2)



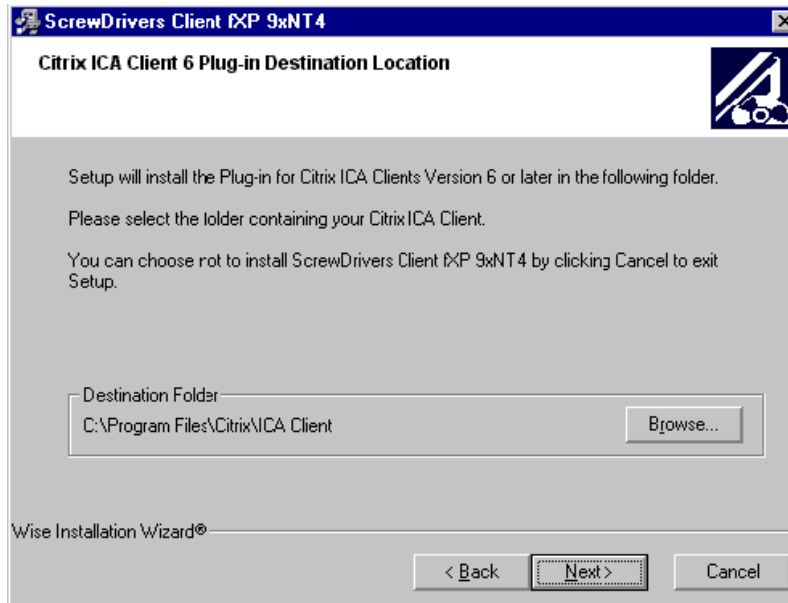
Step 3 - Make sure that only the "Citrix ICA Version 6 Client Support" box is checked, and click on "Next". (Fig. 3).

(Fig. 3)



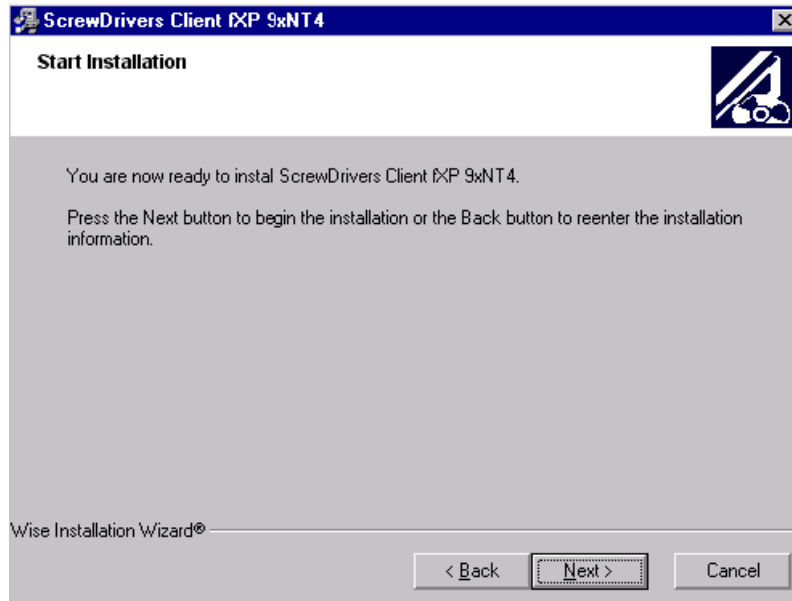
Step 4 - Click on "Next" (Fig. 4)

(Fig. 4)



Step 5 - Click on "Next". (Fig 5).

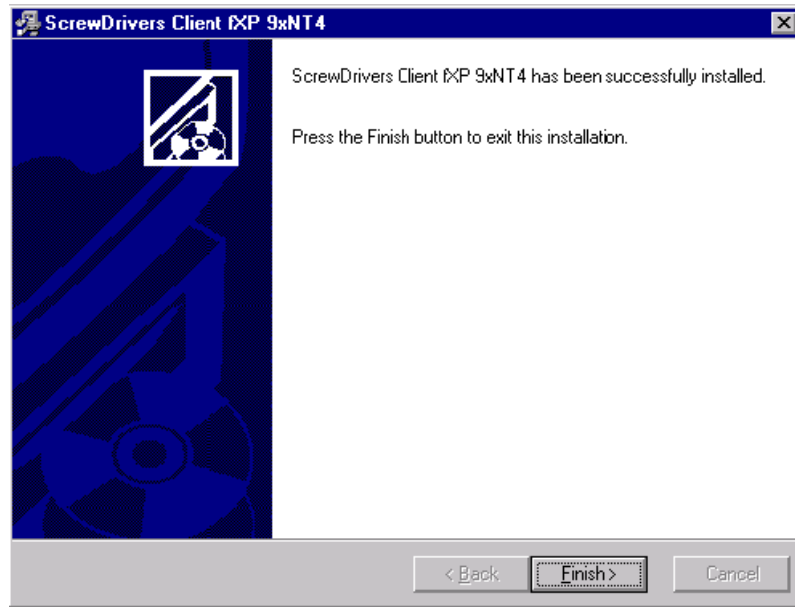
(Fig. 5)



Step 6 - Click on "Next". (Fig. 6)

(Fig. 6)

Step 7 - Click on "Finish" (Fig. 7)



(Fig. 7)

Please reboot your machine for consistent results.