

REGULATIONS
GOVERNING THE
UNIFORM OF OFFICERS
AND
ENLISTED MEN
OF THE
UNITED STATES REVENUE MARINE



TREASURY DEPARTMENT
WASHINGTON , D. C.
GOVERNMENT PRINTING OFFICE

1891

**UNIFORM OF OFFICERS
OF THE
UNITED STATES REVENUE MARINE**

GENERAL REGULATIONS.

All persons belonging to the Revenue Marine will strictly conform to the regulations for uniform as may be published by the Treasury Department. Officers on duty on board vessels of the Revenue Marine will at all times wear the uniform of their respective grades.

Officers are forbidden to wear any part of the naval uniform with plain cloth's, except the helmet and the overcoat. In foul weather, officers and crews shall be permitted to wear rain clothes.

Officers will be allowed four months from the date of this order in which to provide themselves with the uniforms herein prescribed.

FULL DRESS

Plate 1

To be worn on occasions of special ceremony, and at general muster on the first Sunday of every month on board vessels of the first and second class

Full dress coat, full dress trousers, chapeau, epaulets, sword, full-dress belt, and sword knot, the coat to be worn completely buttoned, and the sword belt over the coat.

DRESS

Plate 2

To be worn on all occasions of ordinary ceremony, as in making the first visit in port to commanding officers of other government vessels, on parades of ceremony with enlisted men under arms, and at Sunday inspection, except on the first Sunday of the month.

Frock coat, blue or white trousers, and chapeau or helmet, epaulets, sword, black leather belt and sword knot; the coat to be worn completely buttoned, and the sword belt over the coat.

UNDRESS

Plate 3

To be worn when performing any special duty with enlisted men under arms away from the vessel, and when calling officially on officers other than commanding officers, of other government vessels

Frock coat; white or blue trousers, and cap or helmet, shoulder straps, sword and black leather belt; the coat to be worn completely buttoned and the sword belt over the coat.

SERVICE DRESS

Plate 4

To be worn at all times not already provided for.

Blue or white service coat, blue or white trousers, blue cap or helmet, sword, and black leather sword belt. On ordinary boarding duty, sword and belt may be omitted. The service sword belt is to be worn at all times by the officer of the deck in port. White gloves shall always be worn with the sword, except at sea. Officers attached to vessels of the third class shall wear the service dress at all times while on duty onboard their vessels.

FULL DRESS COAT

Plate 1

The full dress coat for all commissioned officers, shall be of dark navy blue cloth, double breasted, lined with black silk serge, the waist of the coat to descend to the top of the hip bone; the skirts to begin about one - fourth of the circumference from the front edge and descend four - fifths of the distance from the hip bone to the knee, with two buttons on the waist behind and one near the bottom of each fold; two rows of large Revenue Marine buttons on the breast, nine in each row; the rows placed 4 1/2 to 5 1/2 inches apart from eye to eye at top, and 2 1/2 inches at bottom; the cuffs of the coat to be closed, without buttons, and to be from 2 1/2 to 3 inches deep; standing collar to hook in front at bottom, and to slope thence upward and backward at an angle of twenty five degrees on each side, and to rise no higher than the chin over it; the collar to have one strip of gold lace 1/2 of an inch wide around the top and down the front.

FROCK COAT

Plate 2

For all officers the frock coat shall be of dark navy blue cloth, faced with the same and lined with black silk serge, double breasted, made to button to the neck, with two rows of large Revenue Marine buttons on the breast, nine in each row; the rows placed 4 1/2 to 5 1/2 inches apart from eye to eye at top, and 2 1/2 inches at bottom; rolling collar; skirts to be full, beginning at the hip-bone and descending four fifths of the distance thence to the knee, with two buttons at the waist behind and one near the bottom of each fold ; cuffs to be closed, without buttons , and from 2 1/2 to 3 inches deep. Shoulder attachments for epaulets to be of cloth and silk neatly laid on.

SERVICE COAT

Plate 4

For all officers, a coat of dark navy blue cloth or serge shaped to the figure, to descend top of inseam of trousers; a slit over each hip extending on the right side 5 inches from the bottom of the coat, and on the left side as high as the position of the lower edge of the sword belt; single-breasted, with a " fly" front fitted with plain flat, black gutta-percha buttons and a standing collar. The collar, edges of the coat, side seams of the back from the shoulder to the lower edge of the skirt, and edges of the hip slits to 5 inches from bottom of coat shall be trimmed with lustrous black mohair braid 1 1/4 inches wide laid on flat, beside which , at a distance of 1/8 inch with an overhand turn 3/8 inch in diameter at each change of direction, a narrow black silk braid 1/8 of an inch wide shall be placed. On each side of the collar shall be embroidered in high relief, 1 inch in width, the corps badge and grade devices. The grade mark on the sleeve shall be a double thickness of lustrous black braid, showing the same width and disposition as that of the gold lace worn on other coats. The shield worn by line officers on the sleeves of the full dress and frock coats shall be omitted.

In warm weather, a similar coat made of white linen duck , trimmed with white linen braid, but without collar devices, may be worn.

The service coat shall be worn completely buttoned.

TROUSERS

Plate 1

Full Dress. - For all commissioned officers, the trousers shall be of dark navy blue cloth, having a strip of gold-lace, 1/4 of an inch down their outer seam .

Dress, Undress and Service Dress. - For all officers, trousers shall be of dark navy-blue cloth or white linen duck. During hot weather dark navy blue flannel or serge trousers may be worn in service dress. (Plate 2)

WAIST COAT

For all commissioned officers, the waistcoat shall be of dark navy blue cloth, or white linen duck, single-breasted, without collar, cut high in front, with seven small Revenue Marine buttons, the upper one to be not more than 4 inches below the collar button in the neck band of the shirt.

CRAVAT.

The cravat for all officers shall be of black ribbed silk, not more than thirty-six nor less than thirty-two inches long, and not more than one inch and a quarter or less than three quarters of an inch wide, tied in a double bow knot in front with a white shirt-collar showing above it. The shirt collar shall be worn with the full - dress coat and the service coat.

BOOTS OR SHOES.

Shall be of black calf skin or patent leather.

GLOVES.

Shall be of white lisle thread. For open air service in cold weather, heavy leather shall be worn.

SOCIAL FULL DRESS

Plate 5 (Optional)

Coat - On occasion of a strictly social nature, commissioned officers will be permitted to wear a body coat of dark blue navy cloth, faced with the same, and lined with black silk serge; double breasted, cut to the figure, and to have a rolling collar; five large Revenue Marine buttons on each breast, two at the waist behind, and one near the bottom of each fold; cuffs closed without buttons, sleeve ornaments same as on full dress.

Waistcoat - A waistcoat of dark navy blue cloth, single breasted, rolling collar, cut to open low in front, with four small Revenue Marine buttons.

Trousers - Trousers of plain navy blue cloth.

OVERCOAT

Plate 6

For all officers, the overcoat shall be an Ulster of dark navy blue cloth (smooth faced), lined with dark blue or black material , the bottom of the skirt 9 to 12 inches from the ground, double breasted, made to button to the neck, with rolling collar of the same material as the coat, and broad enough to protect the ears when turned up; seven plain, flat, black buttons on each front 1 1/4 inches in diameter, the lower buttons to be placed as low as the knee, the others to be equally spaced up to the throat; an outside pocket in each breast, the openings to be up and down, and the lower part of the opening to be level with the elbow ; an up- and - down slit over the left hip large enough to admit the sword hilt. A belt, 2 3/4 inches wide, of the same material as the coat, to be worn through loops placed above each hip, and to be fastened in front with buttons similar to those on the coat. No collar devices, sleeve grade marks the same as prescribed for the service coat. A hood of the same material as the coat , made to button around the neck under the collar, and large enough to go over the head and cap, shall be worn at night, or in foul weather. The overcoat shall be worn entirely buttoned.

ORNAMENTS

Epaulets (Fig. 1 & 2) : All commissioned officers shall wear two gold-bullion epaulets of the following dimensions : The strap to be 2 1/2 inches wide and 6 inches long; crescent nine sixteenths of an inch in broadest part; bullions 3 inches long and three eighths of an inch in diameter. When overcoats are worn, epaulets will be dispensed with.

Shoulder Straps (Fig. 3) - For all commissioned officers , the shoulder strap shall be 4 1/2 inches long and 1 1/2 inches wide, including the border, which is to be a quarter of an inch wide embroidered in dead gold. The center to be of dark navy blue cloth, upon which are to be embroidered the corps and rank devices as follows :

Embroidered devices for frogs of epaulets and for shoulder straps.

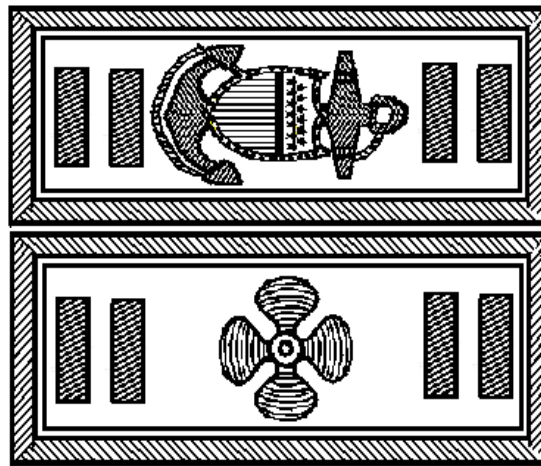
For Captains : At each end, a gold oak leaf $\frac{5}{8}$ of an inch long, and in the center a gold embroidered fowl anchor, $1 \frac{1}{4}$ inches long, with a $\frac{5}{8}$ inch shield embroidered in silver on the shank, and perpendicular to the crown of the anchor.

For First Lieutenants : At each end, two gold bars $\frac{3}{4}$ of an inch long and $\frac{1}{4}$ of an inch wide; center same as for captains,

For Second Lieutenants: Same as for first lieutenants, omitting one bar at each end of the frogs of the epaulets and of the shoulder straps.

For Third Lieutenants: Same as for second lieutenants, omitting the bars.

For Engineers: Same rank devices as are prescribed for line officers with whom they have relative rank, and substituting for the fowl anchor and shield prescribed for line officers, a silver embroidered propeller wheel (Fig 16), $\frac{7}{8}$ of an inch in diameter, four bladed, with a gold embroidered boss.



SLEEVE ORNAMENTS

Plate 1

ON FULL DRESS AND FROCK COATS

Captains: Four strips of $\frac{1}{4}$ inch gold lace around each sleeve, the three lower strips set one-quarter of an inch apart, the upper strip set $\frac{1}{2}$ of an inch from the one below it. The lower edge of the sleeve lace shall be set $2 \frac{1}{2}$ inches from the edge of the sleeve. A gold embroidered shield (Fig. 15) one inch in length shall be set midway between the seams, $\frac{1}{2}$ inch above the upper strip of lace.

For First Lieutenants : Same as for Captains, omitting the upper strip of lace.

For Second Lieutenants : Same as for First Lieutenants, omitting the upper strip of lace.

For Third Lieutenants : Same as for Second Lieutenants, omitting the upper strip of lace.

For Engineers: Same rank devices as are prescribed for line officers with whom they have relative rank, omitting the shield.

COLLAR DEVICES FOR SERVICE COATS.

Fig. 4

Collar devices for all commissioned officers shall be the same as prescribed for the interior of shoulder straps, omitting the rank device at the rear end, and shall be embroidered in high relief upon each side of the collar of the service coat. Each shall be 1 inch in height, with dimensions proportionate, and shall be placed, the rank device vertically, and the corps device horizontally with reference to the upper edge of the collar. The rank device shall commence three quarters of an inch from the front edge of the collar. The corps device shall be placed three-quarters of an inch in rear of the rear edge of the rank device. Devices representing a leaf shall be placed with the axis parallel to the upper edge of the collar, stem to the front, Where two bars are worn the distance between them shall be the width of a bar.

CAP ORNAMENT

Fig.7

The ornament shall be embroidered on dark blue cloth in high relief, and attached to the front of the cap, with its center over the upper welt. For all commissioned, the device shall be a gold embroidered spread eagle, 1 inch in height, extreme points of the wings 2 1/2 inches apart, and on a line with the center of the shield, the latter to be 1/2 of an inch in height, embroidered in silver on the breast of the eagle, the talons of the eagle to grasp the shank of a silver embroidered fowl anchor 1 1/2 inches long. The chin strap for the cap shall be a double loop of twisted gold cord 1/4 inch in diameter.

SWORD.

Fig. 17

The sword for all commissioned officers shall be a cut and thrust blade, not less than 26, nor more than 32 inches long half. basket hilt; grip white; scabbards of black leather; mounting of yellow gilt; the sword knot shall be a strap of half inch gold lace 24 inches long, including the tassel and all as per pattern.

SWORD BELT

Full Dress - For all commissioned officers, the belt shall be of dark navy blue silk webbing. For Captains, (Fig 10 & 11) 5 one sixteenth inch gold lace stripes, and For Lieutenants and Engineers , (Fig 12 & 13) 3 one sixteenth inch stripes, gold lace, woven as per pattern. The sling-straps shall be double, three quarters of an inch wide, with buckle, and woven as per pattern.

Dress, Undress , and Service Dress: For all officers, the belt shall be of plain black grained leather, not less than 1 5/8 inch nor more than 2 inches wide, with sling straps of the same, not less than one half nor more than three quarters of an inch wide, and with a hook in the forward ring to suspend the sword. The belt-plate (Fig 9) shall be of yellow gilt in front, 2 inches in diameter. The sword belt shall be worn over the full-dress and frock coats, with the lower edge of the belt placed above the two lower buttons in front and the two at the waist behind.. The short sling clasp shall be immediately in rear of the left hip-bone; the long sling clasp exactly in the center of the back between the buttons. With the service coats and the overcoat, the belt is to be worn underneath. When the sword is hooked up it shall be with a half turn, so that the hilt shall be to the rear of the book; the back of the blade turned to the front, sling straps outside.

BUTTONS

Revenue Marine buttons shall be gilt, convex, and of two sizes in exterior diameter; large, 4/5 of an inch; and small, 9/16 of an inch. Each size to have the same device, viz : A Treasury shield, surmounted by a fowl anchor resting on a wreath, with the letters U.S. divided by the shield in line with the center of the button.

CHAPEAU

(Fig 5)

All commissioned officers shall wear a rigid chapeau made of black silk beaver, of the following dimensions: Five to 5 1/2 inches high on the left fan, 4 to 4 1/2 inches on the right fan and between 16 and 18 inches long from peak to peak. The rims of the fans to be bound with a strip of black silk lace 2 1/2 inches wide, binding the rims of the fans, and showing 1 1/4 inches on each side and under the peaks. On the right fan there shall be placed a black silk cockade 3 3/4 inches in diameter. Over the cockade shall be worn a strip of 1/2 inch gold lace, on each side of which, at a distance of 1/8 inch, with an overhand turn at the lower end, shall be placed a gold cord 1/8 inch in diameter. The lower end of the 1/2 inch lace shall be fastened with a large Revenue Marine button. The point of the loop shall touch the middle of the lower rim of the fan, and the loop shall slope upwards and forwards at an angle of 35° from the vertical, the ends being carried over the rim of the fan. In the fold at each end of the hat a tassel shall be placed, formed of three gold bullions and three blue bullions.

CAP
(Fig 6)

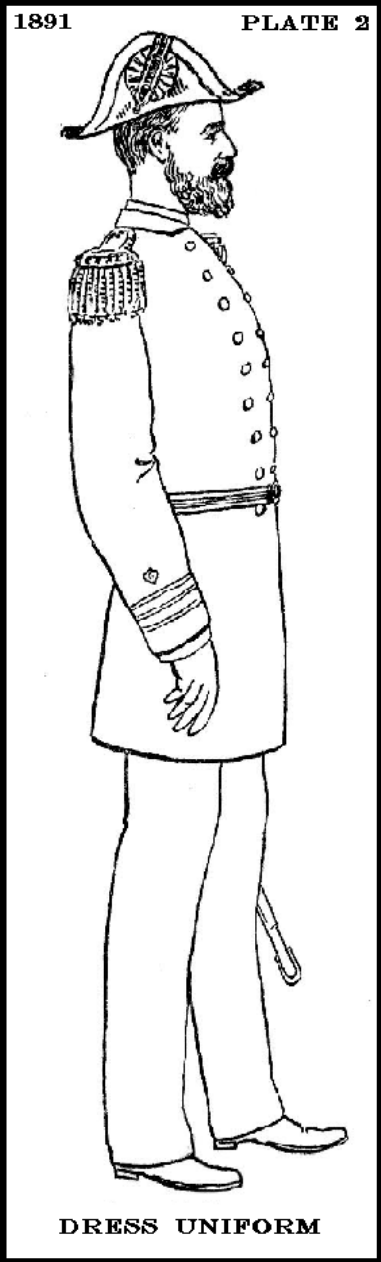
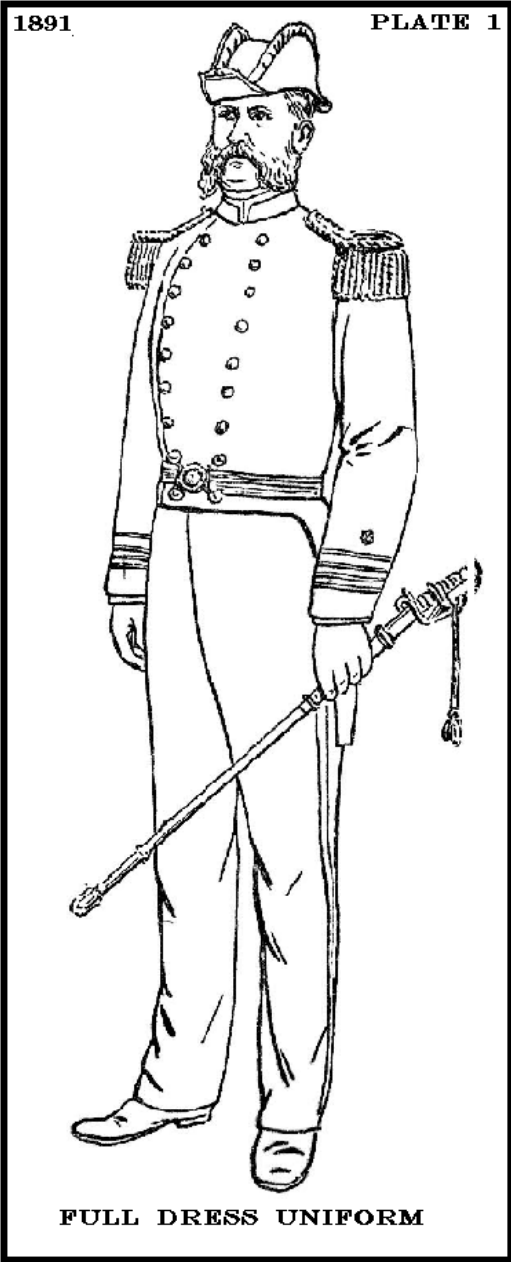
The cap for all officers shall be of dark navy blue cloth, the diameter at the top to be slightly less than at the base, the quarters not less than $1\frac{1}{4}$ or more than $1\frac{1}{2}$ inches high and of the same height in front and at the back. The seam around the top shall be made without a welt, and neatly stitched on each side. The band shall be $1\frac{1}{2}$ inches wide with a welt one-eighth of an inch in diameter at the top and bottom.

The bottom welt shall be one eighth of an inch from the base of the cap. A band of lustrous black mohair braid, similar to that used for the trimmings of the service coat, shall be worn between upper and lower welts. The visor for all officers shall be of black patent leather, molded to shape and bound with the same. All visors shall be green underneath, rounded and sloping downwards not less than 20° or more than 30° from the horizontal. The inside band shall be of leather and shall extend from the base of the cap to within 1 inch of the top. The sweat lining shall be of morocco. Four black metal eyelets, two on each side, shall be placed above the band in the quarters for ventilation. A small sized Revenue Marine button shall be placed on each side beyond the ends of the visor, the eye of the button immediately above the lower welt.

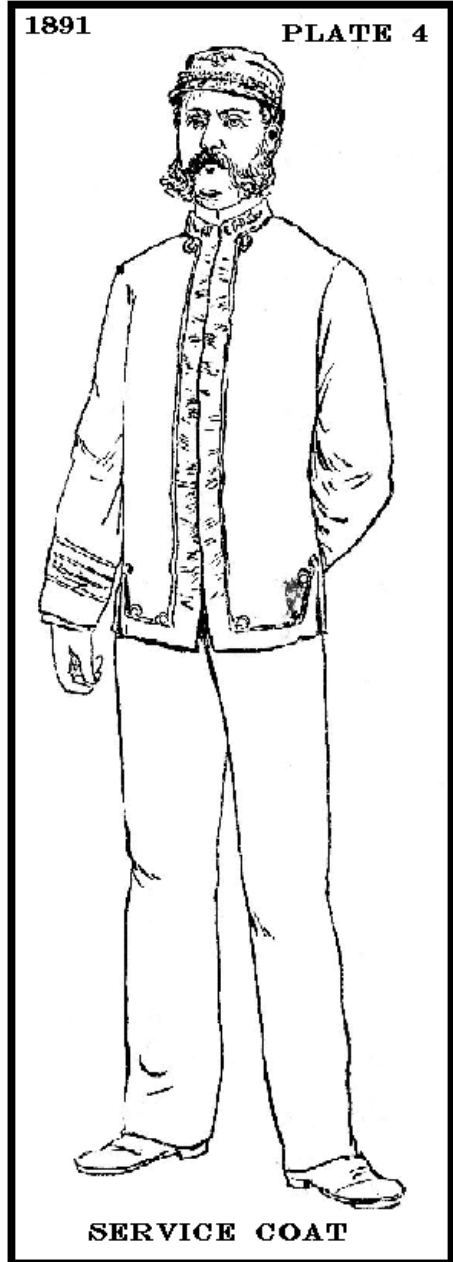
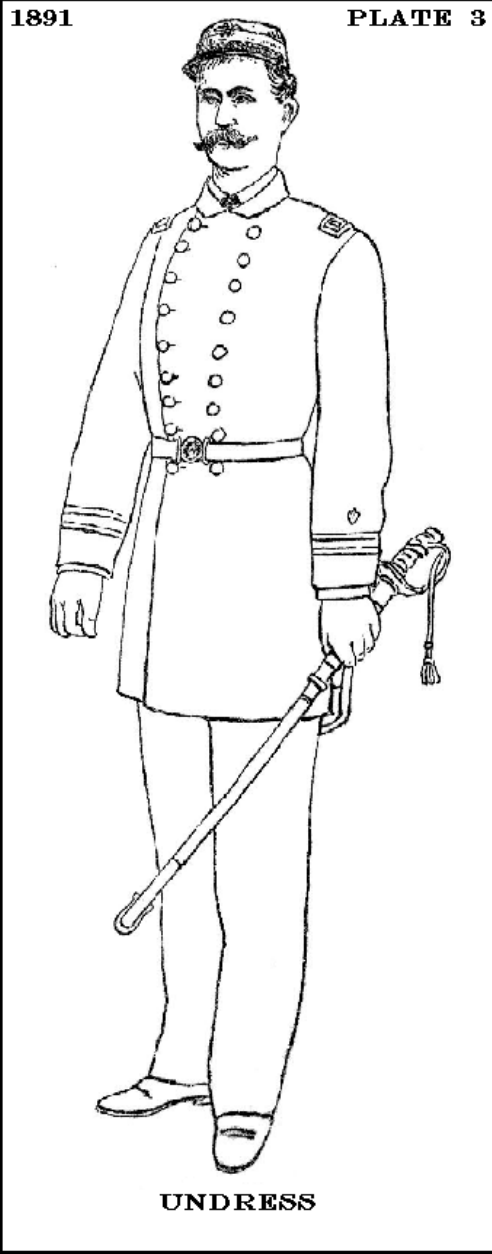
HELMET
(Fig 8)

The helmet shall be made of cork or other suitable material, the crown to measure (in the curve) from the lower edge of the outside band below the strap buttons to the center of the ventilator on top of the crown, not less than 6 inches or more than $6\frac{3}{4}$ inches. The brim at the front shall not be less than $2\frac{1}{4}$ or more than $2\frac{1}{2}$ inches wide, and shall diminish in width to 1 inch on each side at the middle of the crown; the brim at the back shall be three-eighths of an inch wider than that in front, and diminish to the same width on the sides as the front brim.; the droop of the brim at the front shall be not less than 48° nor more than 56° ; back not less than 45° nor more than 48° ; sides not less than 55° . The covering of the helmet shall be light drab linen duck, with a band at the base of the crown of the same material, three quarters of an inch wide and stitched on each edge; one small Revenue Marine button, detachable, in the band on each side at the middle, and a light drab glazed leather chin strap in front, five eighths of an inch wide; the sweat band of uncolored morocco, with a ventilating space between it and the body of the crown; the brim lined with green alpaca or silk, bound with light drab enameled leather, and the crown not lined.

Revenue Marine 1891

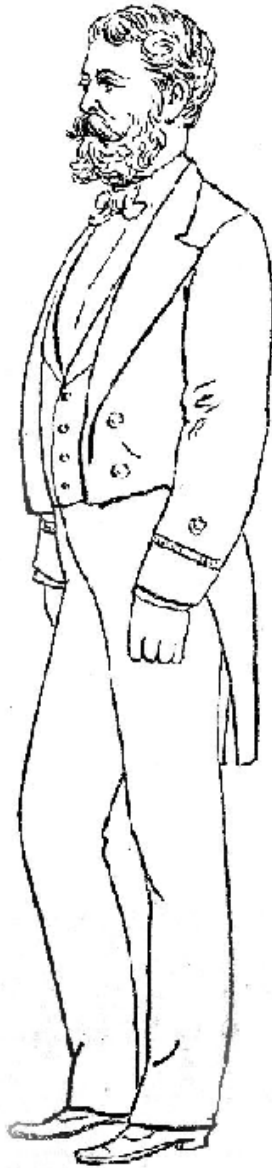


Revenue Marine 1891



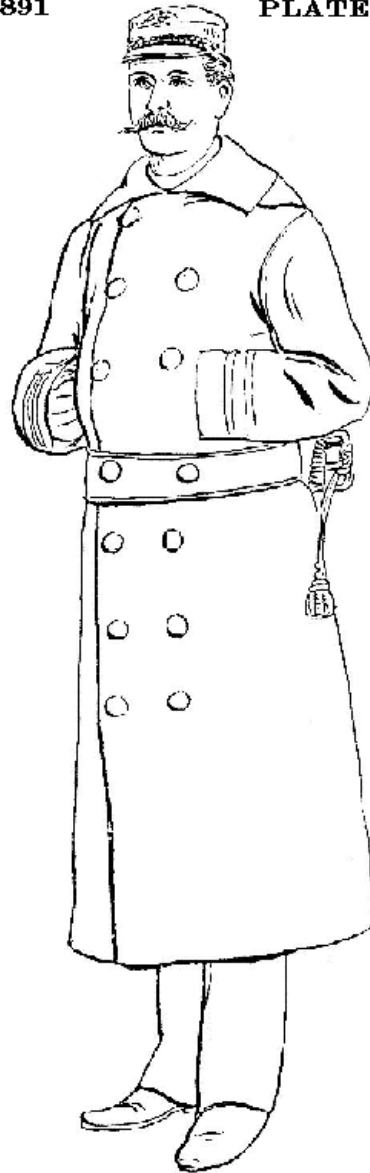
Revenue Marine 1891

1891 PLATE 5



SOCIAL FULL DRESS

1891 PLATE 6



OVERCOAT

1891

FIG. 1

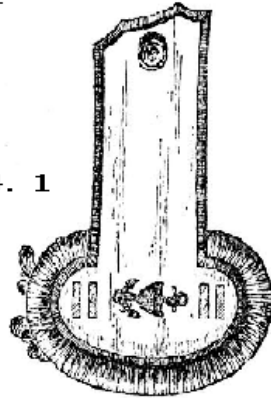
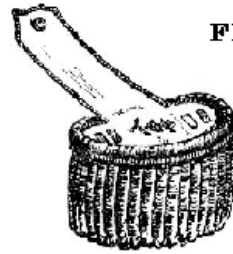


FIG. 2



EPAULETTES

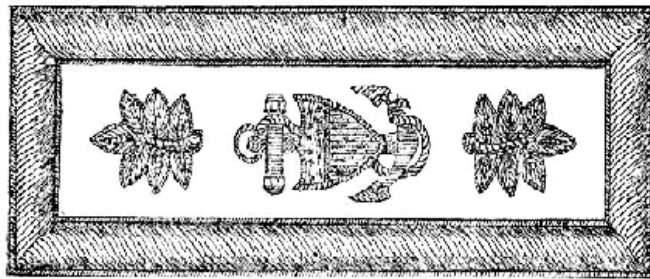


FIG. 3

SHOULDER STRAP

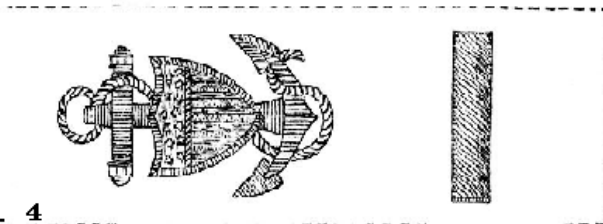


FIG. 4

COLLAR DEVICE
FOR SERVICE COAT

1891

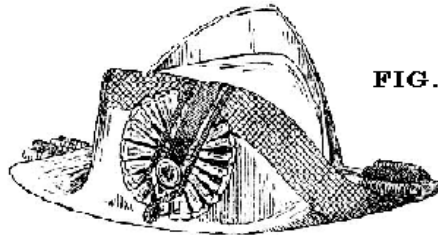


FIG. 5

CHAPEAU

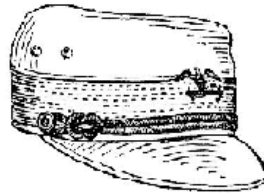


FIG. 6

CAP

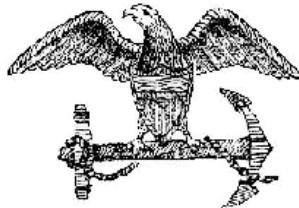


FIG. 7

CAP DEVICE

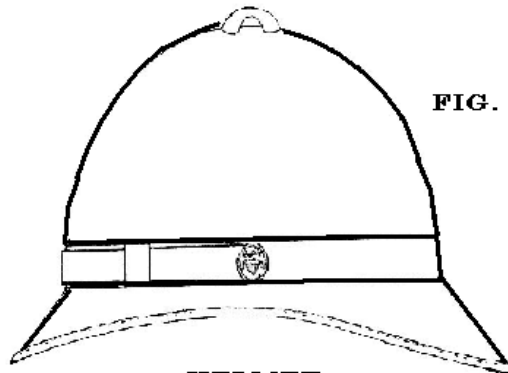


FIG. 8

HELMET

1891

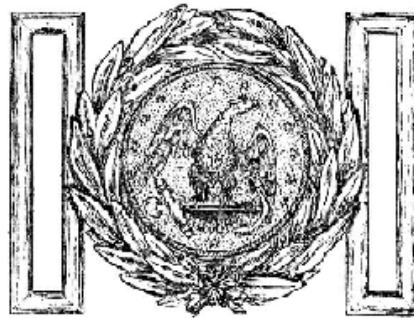


FIG. 9

BELT BUCKLE

BELT LACE

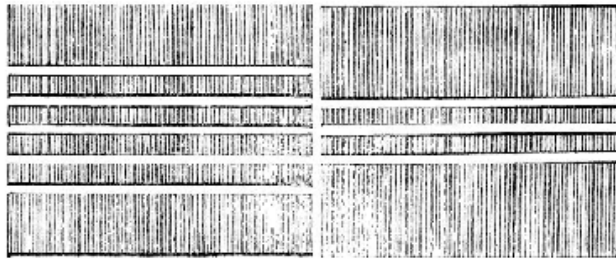


FIG. 10

FIG. 12



FIG. 11

FIG. 13

SLEEVE ORNAMENTS



RANK

FIG. 14



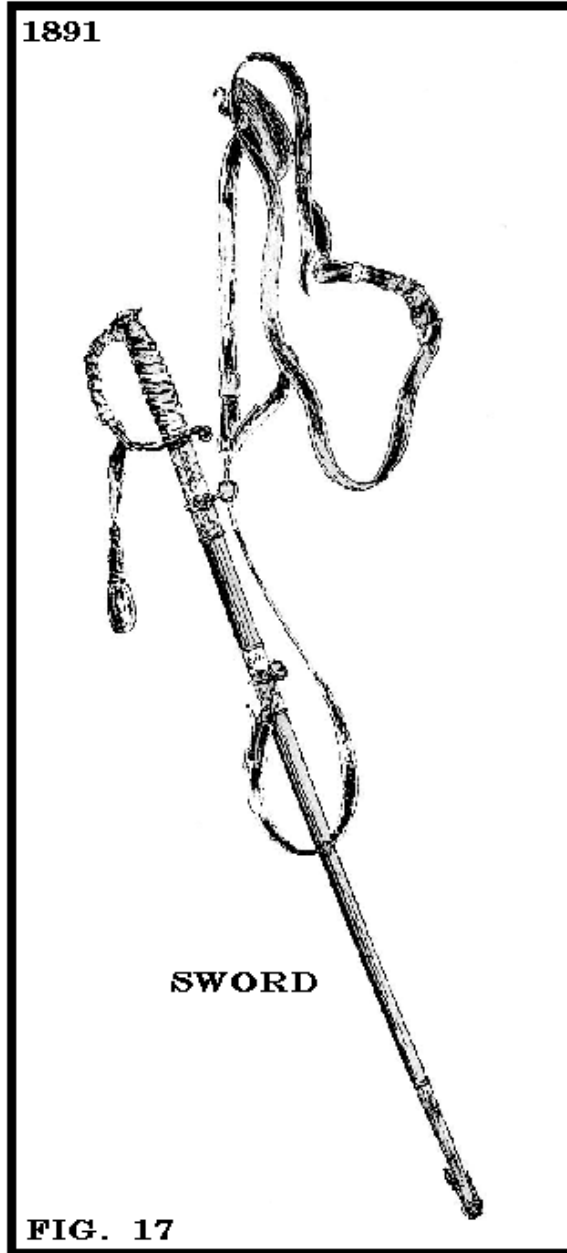
SHIELD

FIG. 15



**ENGINEER'S
DEVICE**

FIG. 16



UNIFORM FOR ENLISTED MEN

PETTY OFFICERS - BOATSWAIN, GUNNER, CARPENTER, AND MASTER AT ARMS

Plate 7

Coat (Fig. 18) : To be of dark navy-blue cloth, double-breasted sack pattern, rolling collar, front and back of skirt to descend to top of inseam of trousers, lined with dark blue flannel or black Italian cloth. A pocket in the left breast, and one in each front, near the bottom. Five gilt Revenue Marine buttons, of large size on each breast, equally spaced. Coat to be worn with the four lower buttons buttoned.

Waistcoat: Dark navy blue cloth, single breasted without collar, cut high in front, with six small size gilt, Revenue Marine buttons, the upper button to be not more than 4 inches below the collar-button in the neck band of the shirt

Trousers (Fig. 21) : Dark navy-blue cloth, made in the same manner as those for officers.

Shirt : White linen or cotton of ordinary pattern, to be worn with white collar and cuffs.

Cravat: Black ribbed silk, not more than 36 inches nor less than 32 inches long, and not more than 1 1/2 inches nor less than 3/4 of an inch wide, tied with a double bow knot in front.

Cap (Fig. 26) : Dark navy-blue cloth; band, lustrous black mohair; visor, black patent leather, bound with same, green underneath chin strap, black patent leather 1/2 inch wide fastened at the side with two small gilt navy buttons and provided with one gilt and one leather slide. Two small eyelet ventilating holes, in each side of the quarters.

FOR STEWARDS AND COOKS

Coat (Fig. 19) : To be of dark navy blue cloth, single-breasted sack pattern, rolling collar, lined with blue flannel or black Italian cloth; five medium size black navy buttons on front. A pocket in the left breast and one in each front near the bottom ; front and back of skirt to descend to top of inseam of trousers. Coat to be buttoned when worn .

Waistcoat, trousers, shirt, cravat, and cap : Same as for Petty Officers, (except Quartermasters, Coxswains, and Oilers) Stewards and Cooks may wear a dark navy blue flannel shirt, without collar, with neckband 1 inch width, and with small black buttons on front and cuffs.

FOR ALL ENLISTED MEN EXCEPT THE PETTY OFFICERS BEFORE MENTIONED, STEWARDS AND COOKS.

Plate 8

Overshirt (Fig. 28) : Dark navy blue flannel, sufficiently long to allow for shrinkage, to be loose around the body; the back and breast to be of double thickness, such double part to descend 4 inches below the line of the shoulder blades ; large square collar, of double thickness, of the same material; cuffs sufficiently large enough to allow for shrinkage, fastened with two small size black buttons; to the inside of each side of the neck opening there shall be sewed a flap made of double thickness of flannel; these flaps shall button together over the throat with two small size black buttons; small pocket in right breast. Around the collar of the overshirt shall be stitched three strips of white tape, 3/16 of an inch wide and 3/16 of an inch apart, the outer strip to be 1/4 of an inch from the edge, the strips extend down in front to the bottom of the opening, In each corner of the collar there shall be worked, in white, a star 3/4 of an inch in diameter.

Trousers (Fig. 29) : Dark navy blue cloth with inner and outer seam two pockets and a broad flap; fastened with ten small size black navy buttons, and laced behind with a flat, black silk lacing, run through four eyelets in each side.

In undress, dark navy blue satin or flannel trousers may be substituted for those of cloth by all enlisted men.

Cap (Fig. 30) : Dark navy blue cloth, crown from 9 1/2 to 10 inches in diameter, quarter pieces 2 inches in width with fullness as per pattern, band 1 1/2 inches wide, soft flax or manila grommet and with sweat-leather. The cap ribbon shall be of black silk ribbon 1 1/4 inches wide. The name of the vessel to which the wearer is attached, in plain block lettering one half inch in height, preceded by the letters **U.S.R.S.**, will be woven in gilt thread through the center of the ribbon.

Watch cap (Fig. 31) : Dark navy-blue woven woolen goods, to be all wool, closely woven, conical in shape, 10 inches long, with a hem 2 1/2 inches deep at the bottom

Neckerchief: Black silk of Navy regulation pattern.

Shoes: Black kip or calf; heels to be broad and low.

Knife Lanyard: White cotton of seaman like make; knife always to be worn attached to lanyard .
In warm weather, and when authorized by the Commanding Officer, white cotton duck, of patterns here to for described for the blue cloth uniform, may be worn by all enlisted men. White cotton duck hats as per pattern may be worn under like circumstances.

OVERALLS.

Jumper: Unbleached cotton duck, similar in cut to white jumper, to descend from 2 to 3 inches below the hip; collar the same material as garment and of seaman pattern; open sleeves, without cuffs, to be large enough to fit easily over the overshirt.

Trousers: Unbleached cotton duck of overall pattern, fastened with a draw cord around the waist and 2 buttons on flap; a large pocket on front of right leg.

RAIN CLOTHES

Hat, coat, and trousers oiled unbleached duck, Cape Ann pattern, Rubber Boots

OVERCOAT

(Fig. 20)

Overcoat: Heavy, dark navy blue cloth , lined with dark blue flannel, the bottom of the skirt to reach the tips of fingers, arm hanging by the side in its natural position, double breasted, made to button to the neck, with rolling collar, same material as the coat, and broad enough to protect the ears when turned up. Five large size black navy buttons on each front the lower buttons to be placed on a line with the opening of the horizontal pocket, the others to be equally spaced up to the throat. An outside pocket in each breast, the openings to be up and down, and the lower part of the opening to be level with the elbow . A horizontal pocket, with flap cover, shall be placed in each front below the line of the waist. Overcoat to be worn completely buttoned.

RATING BADGES

All petty officers shall wear on the outer garment (excepting the overcoat) a rating badge as per pattern . For the Boatswain, Gunner, Carpenter, and Master at Arms, the badges shall be embroidered in gold on dark navy blue cloth; and for Quartermasters, Coxswains, and Oilers, the badges shall be worked in white silk on blue clothing and in blue silk on white clothing. The badge shall be worn on the outer side of the right sleeve, half way between the shoulder and elbow and be of patterns as follows : viz.

For Boatswain as per figure 22

For Gunner as per figure 23

For Carpenter as per figure 24

For Master at Arms as per figure 25

For Quartermasters as per figure 32

For Coxswains as per figure 33

For Oilers as per figure 34

Quartermasters, Coxswains, and Oilers : shall wear around the cuffs of the overshirt three stripes of white tape three sixteenths of an inch wide and one quarter of an inch apart, the middle of the middle stripe to be in the center line of the cuff .

Seamen, Firemen, and Coal Passers : shall wear two strips, 1/4 of an inch apart.

Boys : shall wear one strip of white tape, 3/16 of an inch wide, around the cuffs of the overshirt, the middle line of the space between the two strips, and the middle of the single strip to come over the middle of the cuff.

A copy of these Regulations shall be placed on the berth deck, where they may be consulted at all reasonable times by the enlisted men.

CHARLES FOSTER
Secretary of the Treasury

TREASURY DEPARTMENT,
September 1, 1891 .

Revenue Marine 1891

1891

PLATE 7



BOATSWAIN CARPENTER
GUNNER MASTER AT ARMS

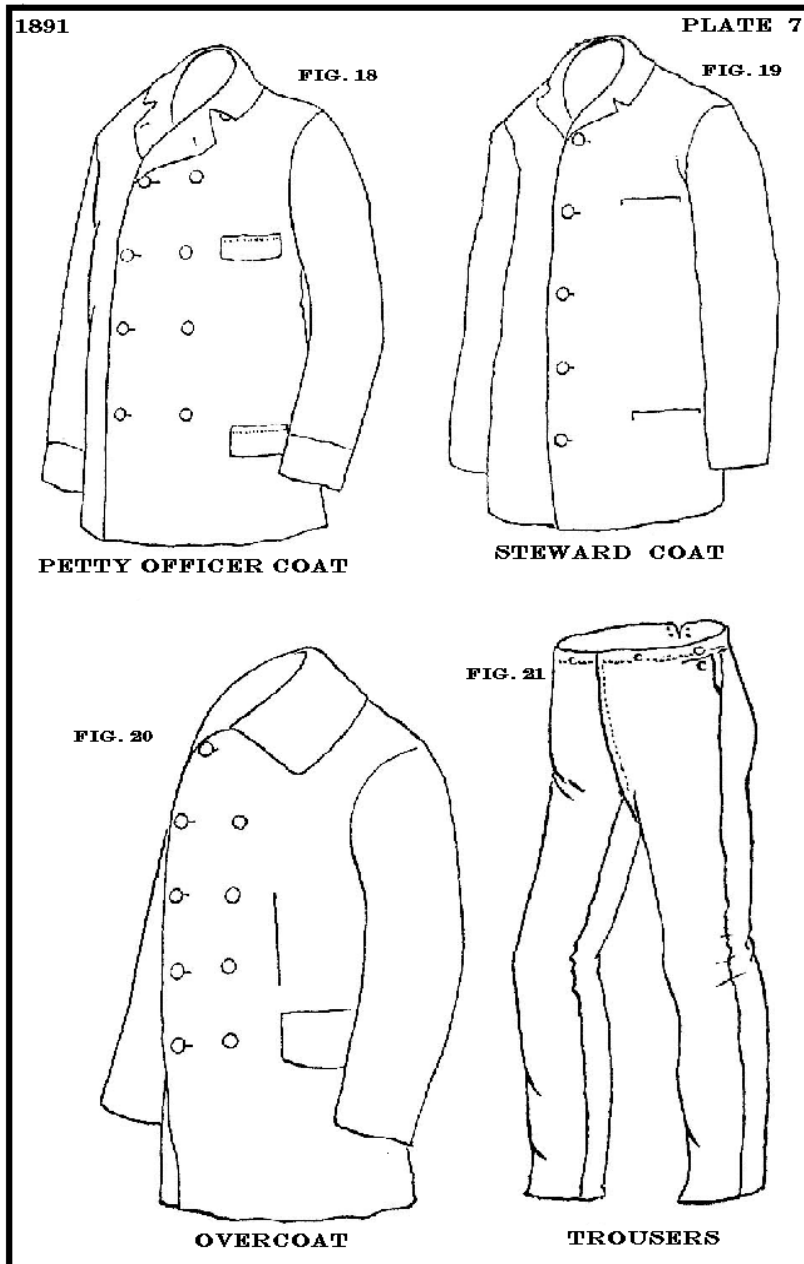
1891

PLATE 8



QUARTERMASTER
COXSWAIN OILER
ENLISTED MEN

Revenue Marine 1891



1891 RATING BADGES

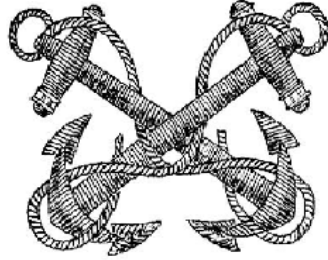


FIG. 22

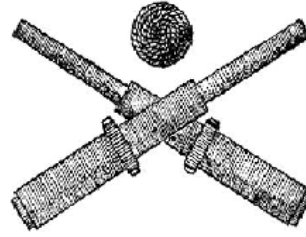


FIG. 23

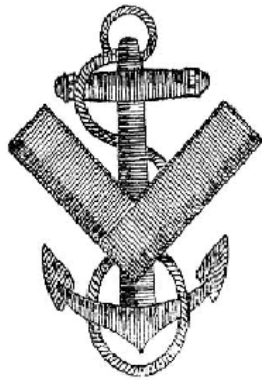


FIG. 24

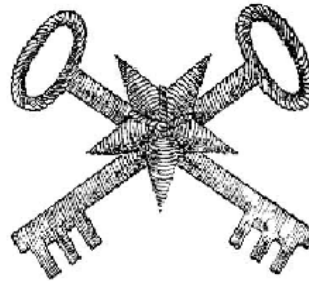
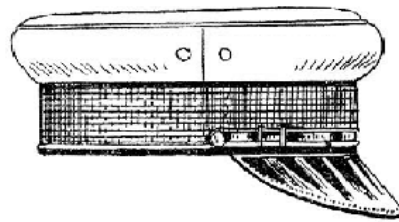
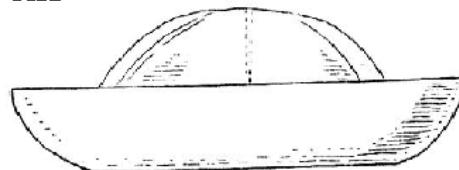


FIG. 25



PETTY OFFICERS CAP



COTTON DUCK HAT

Revenue Marine 1891

1891

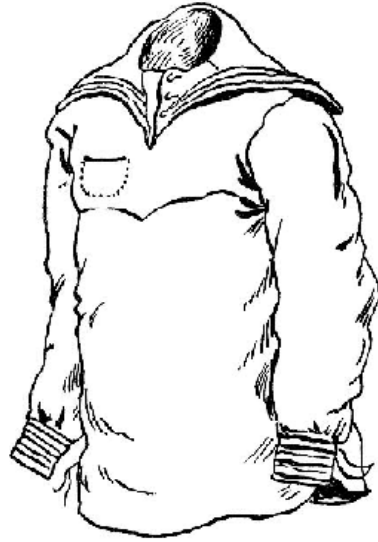


FIG. 28



FIG. 29

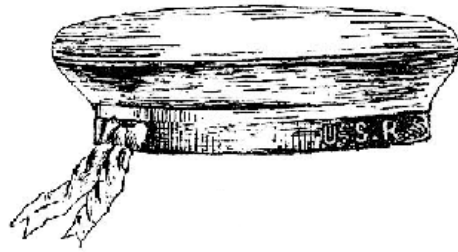


FIG. 30

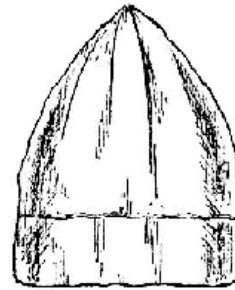
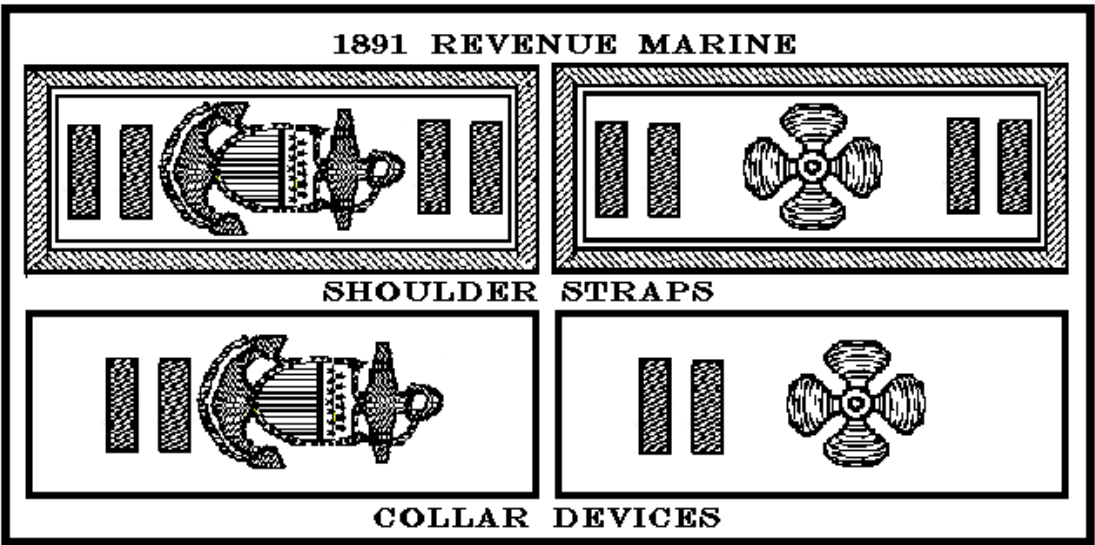
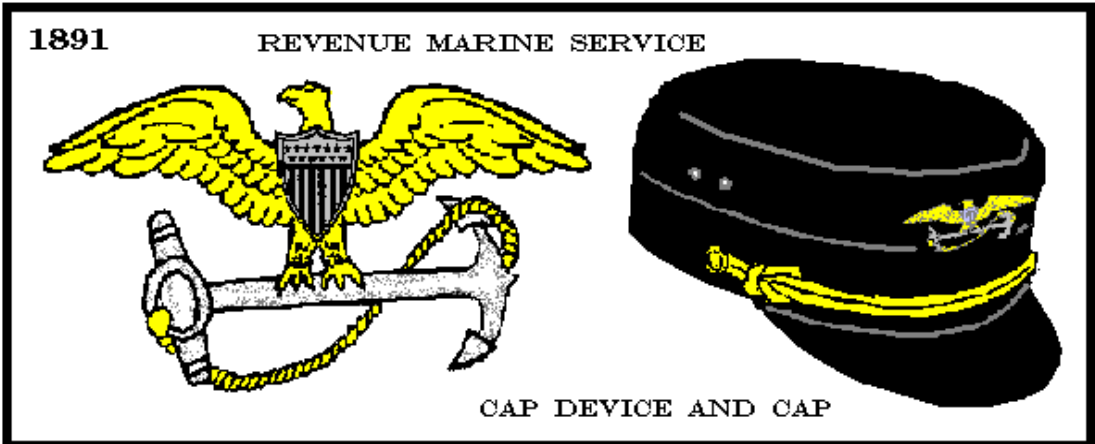
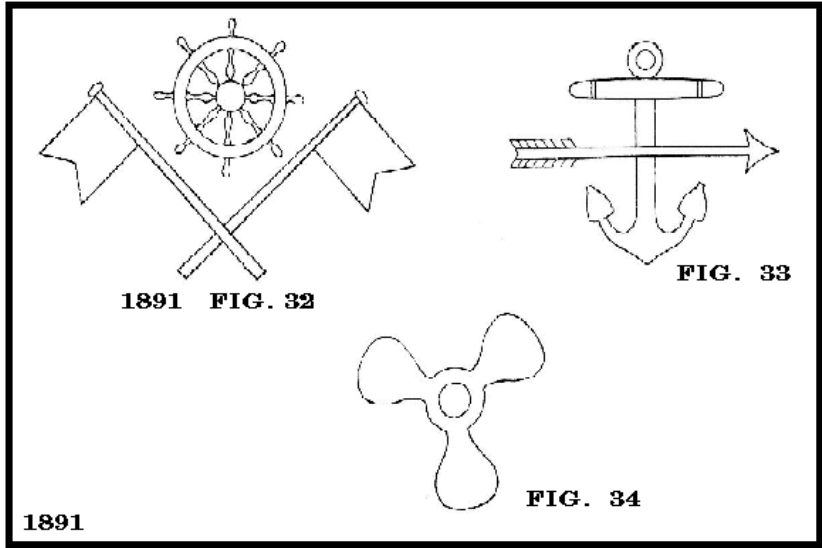


FIG. 31



1891 REVENUE MARINE SERVICE



CAPTAIN



1 ST



2 ND



3 RD

LIEUTENANT



CHIEF



1 ST
ENGINEER



2 ND

1/4 INCH
WIDE LACE

REGULATIONS
GOVERNING THE UNIFORM
OF
OFFICERS
AND
ENLISTED MEN
OF THE
UNITED STATES REVENUE MARINE



TREASURY DEPARTMENT
WASHINGTON , D. C.
GOVERNMENT PRINTING OFFICE

1891