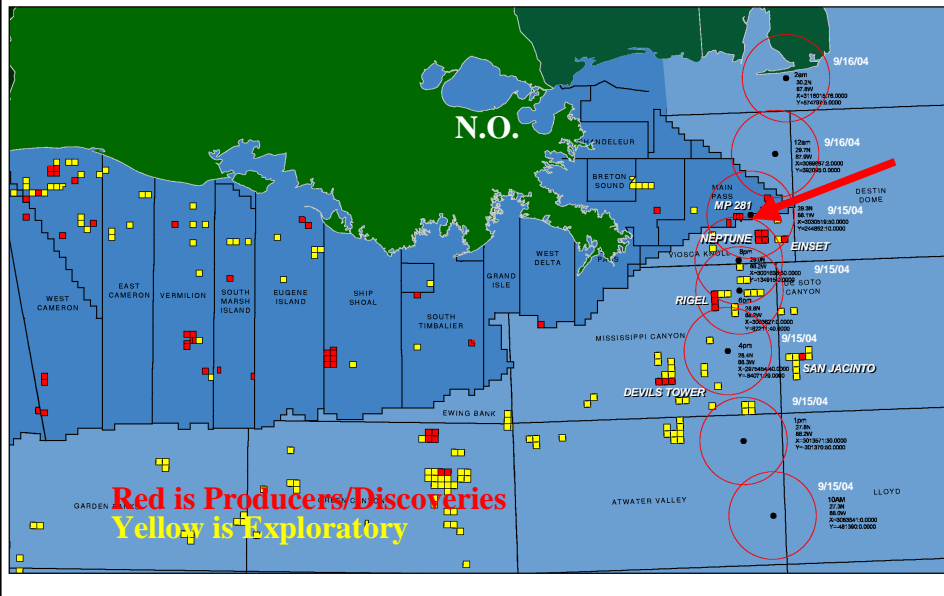


Ivan the Terrible

Dominion E & P, Inc.



Ivan's Path Through DEPI Fields



Platform Description

4 pile, 9 slot, drilling and production platform

307 feet of water

Installed 1997 (API RP 2A, 19th edition)

Three decks (average size = 85' x 135')

66" diameter piles

Cellar deck TOS at 52'-10"

Manned

Facility capacity: 20,000 bopd, 180 mmcf/d

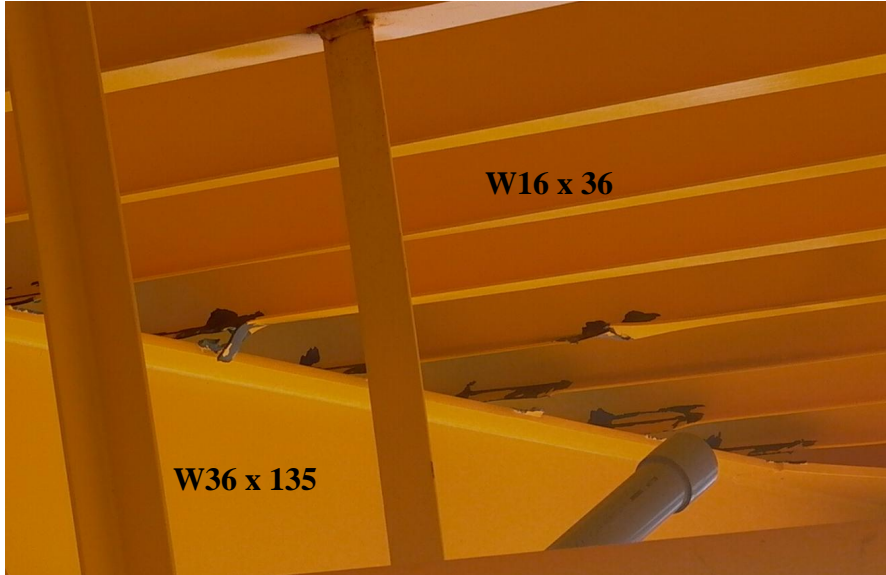
Can support a 1500 HP platform drilling rig

Dominion - Main Pass 281 "A"



Sub-Cellar Deck Beams

(TOS = +53")



Deck Beam Ripped from Girder



Sump Tank Supports



Jacket Leg A-1 (SE)



Water
Depth
(-) 58'

Jacket
Leg Wall
0.750"
A-572 Gr 50

Pile Wall
2.250"
A-572 Gr 50

Jacket Diagonal



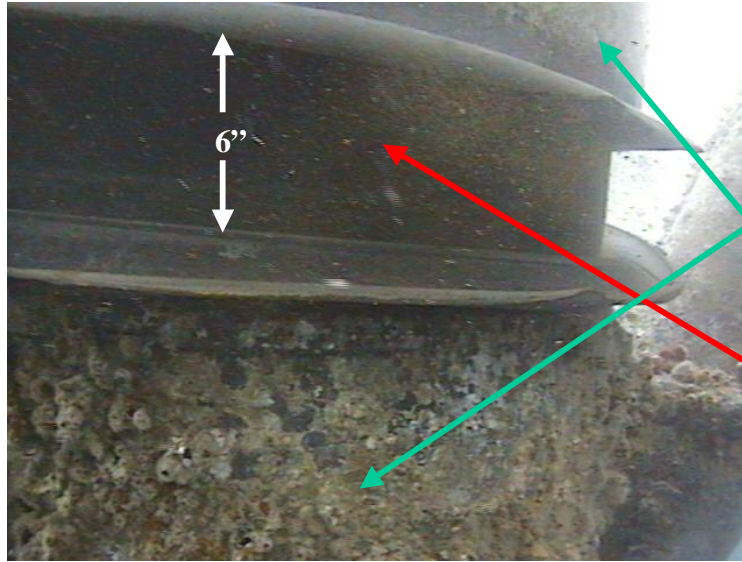
26 x 0.500"
A-572 Gr 50

Jacket Diagonal



26 x 0.500"
A-572 Gr 50

Jacket Leg B-2 (NW)



Water
Depth
(-) 6'

Jacket Leg
1.25" wall
A-572 Gr 50

Pile 2.25" wall
A-572 Gr 50

1" Annulus

Mag. Particle Inspection



Level IV
Inspection

ROV



Fugro Consultants LP
Pasadena, Texas

Hole Cut in Leg for ROV



66" x 2.25" leg can
12" x 12" hole
cut out stabbing guide

