



# Cargo Securement

FMCSA Final Rule  
Effective July 24, 2006

# Definitions

**Metal coil** – comprised of elements, mixtures, compounds or alloys commonly known as metal, metal foil, metal leaf, forged metal, stamped metal, metal wire, metal rod, or metal chain that are packaged as a roll, coil, spool, wind, or wrap, including plastic or rubber coated electrical wire and communications cable.



# Definitions

Longwood -  
Means all  
logs,  
including  
utility  
poles...



# Indirect Securement (full working load limit)

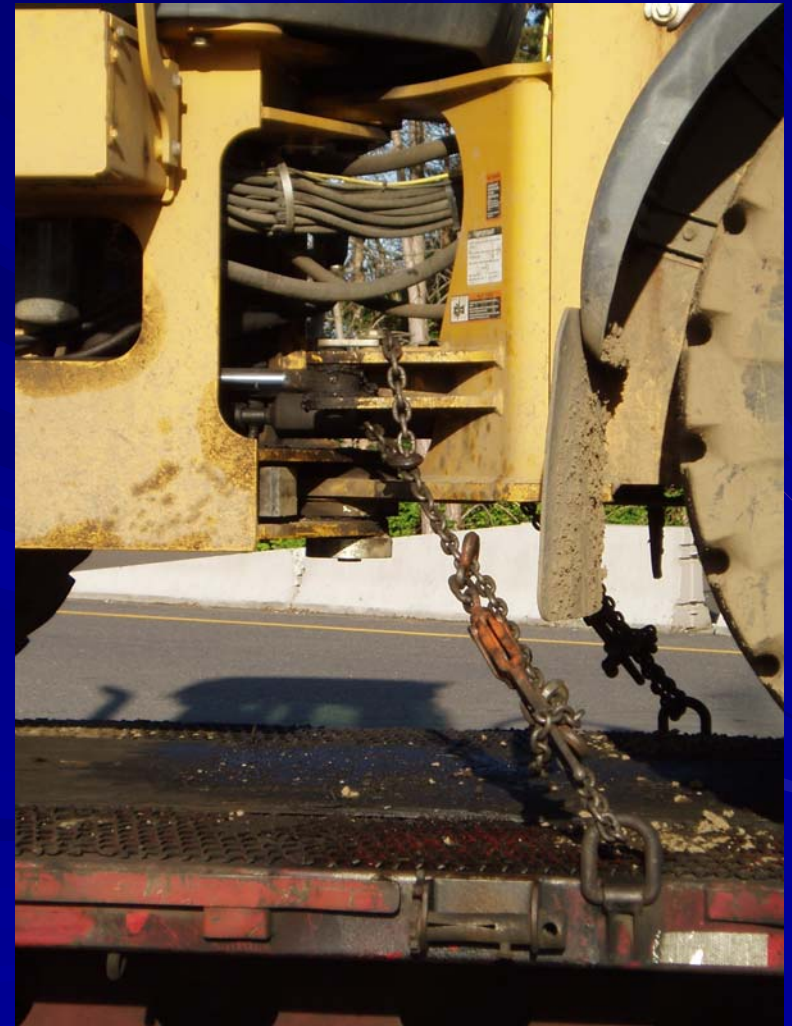


# Direct Securement

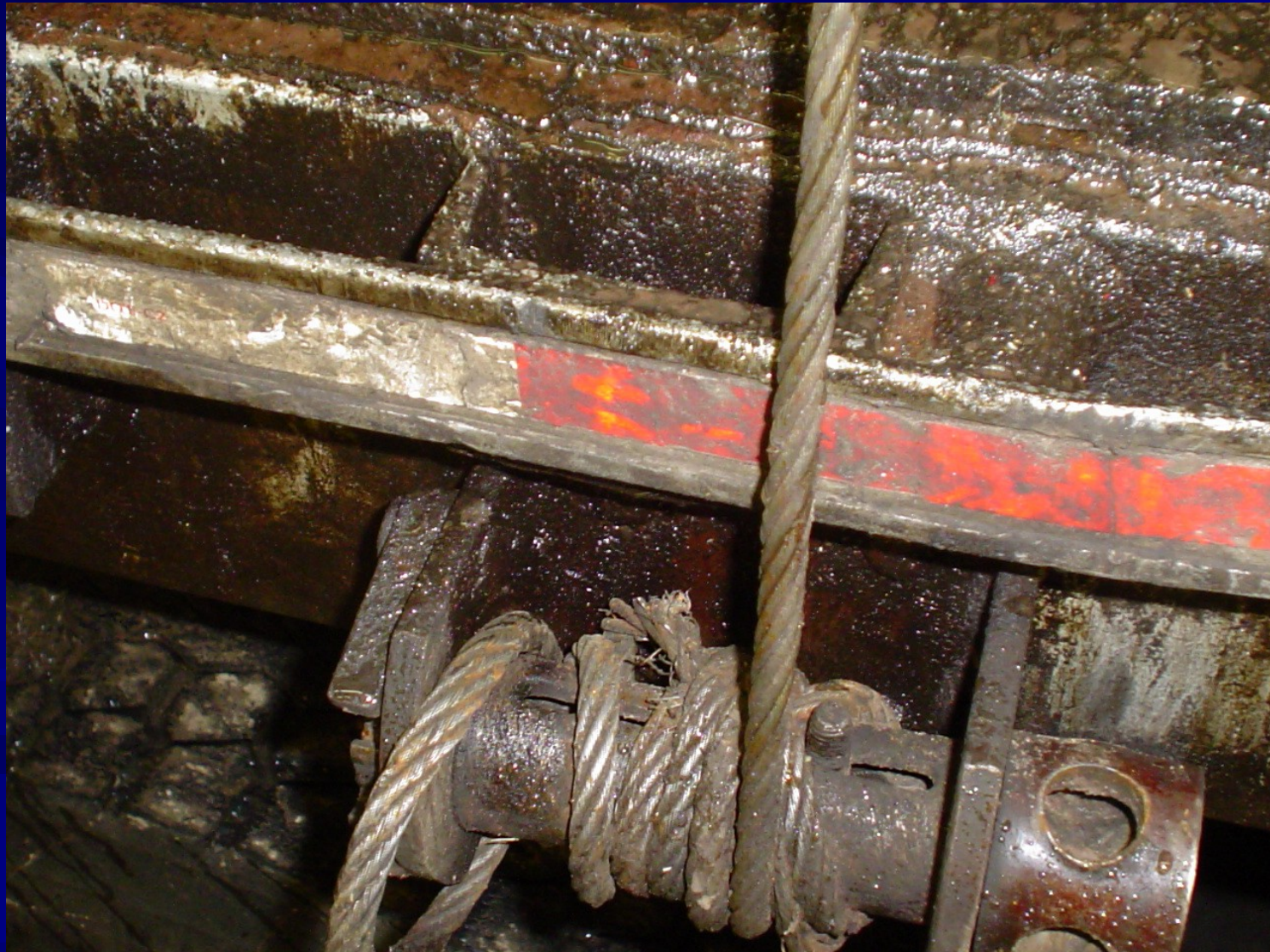
$\frac{1}{2}$  working load limit



$\frac{1}{2}$  working load limit x 2



Inside rub rails –  
no longer required.....



# Both long and short logs must have.....

Oops, a couple  
are missing...



At least  
two  
tiedowns

# Heavy Equipment

Raised position is okay, if designed to be transported that way – and locked in place “locked in place may include hydraulics, for this item”





# Accessories Might NOT need extra chains....





If backhoe is lowered and pinned...

...No additional chain necessary ...



Has mechanism to prevent from moving side to side, up and down



Extra chain  
not  
required  
on forks

Has mechanism to prevent from moving side to side, up and down



Extra  
chain  
not  
required  
on loader



# Cargo Securement

David McKane  
Motor Carrier Transportation Division  
David.J.McKane@odot.state.or.us  
503-373-0884