

CHAPTER V

STATISTICS OF FRUITS, TREE NUTS, AND HORTICULTURAL SPECIALTIES

For most fruits, production is estimated at two levels—total and utilized. Total production is the quantity of fruit harvested plus quantities which would have been acceptable for fresh market or processing but were not harvested or utilized because of economic and other reasons. Utilized production is the amount sold plus the quantities used on farms where grown and quantities held in storage. The difference between total and utilized production is the quantity of marketable fruit not harvested and fruit harvested but not sold or utilized because of economic and other reasons. Production relates to the crop produced on all farms, except for apples and strawberries. In accordance with Congressional enactment, the Department's estimates of apple production since 1938 have related only to commercial production. The estimates for strawberries cover production on area grown primarily for sale. Statistics on utilization of fruit by commercial processors refer to first utilization, not necessarily final utilization. For example, frozen fruit includes fruit which may later be used for preserves.

The price shown for each crop is a marketing year average price for all methods of sales. Prices for most fresh fruit are the average prices producers received at the point of first sale, commonly referred to as the "average price as sold." Since the point of first sale is not the same for all producers, prices for the various methods of sale are weighted by the proportionate quantity sold. For example, if in a given State part of the fruit crop is sold f.o.b. packed by growers, part sold as bulk fruit at the packinghouse door, and some sold retail at roadside stands, the fresh fruit average price as sold is a weighted average of the average price for each method of sale.

The annual estimates are checked and adjusted at the end of each marketing season on the basis of shipment and processing records from transportation agencies, processors, cooperative marketing associations, and other industry organizations. The estimates are reviewed (and revised if necessary) at 5-year intervals, when the Census of Agriculture data become available. The Department's available statistics are limited to the major tree fruits and nuts and to grapes, cranberries, and strawberries, and exclude some States where census data indicate production is of only minor importance.

Table 246.—Fruits and planted nuts: Bearing area, United States, 1986–95

Year	Citrus fruits ¹	Major deciduous fruits ²	Miscellaneous fruits ³	Planted nuts ⁴	Fruits and planted nuts
	<i>1,000 acres</i>	<i>1,000 acres</i>	<i>1,000 acres</i>	<i>1,000 acres</i>	<i>1,000 acres</i>
1986	818.9	1,727.7	215.8	669.5	3,431.9
1987	826.2	1,739.1	263.2	675.4	3,503.9
1988	832.9	1,730.4	264.6	686.3	3,514.2
1989	847.5	1,714.1	258.7	686.6	3,506.9
1990	851.8	1,709.5	252.0	691.4	3,504.7
1991	849.9	1,701.8	247.3	687.4	3,486.4
1992	886.1	1,721.2	299.3	680.0	3,586.6
1993	947.4	1,733.4	294.9	680.4	3,656.1
1994	978.1	1,733.2	293.7	677.4	3,682.4
1995 ⁵	1,052.6	1,742.3	222.6	667.2	3,684.7

¹Oranges, tangerines, Temples, grapefruit, lemons, limes, tangelos, and K-Early citrus. Area is for the year of harvest. ²Commercial apples, apricots, cherries, grapes, nectarines, peaches, pears, plums, and prunes. ³Avocados, bananas, berries (after 1991), cranberries, dates, figs, guavas (after 1987), kiwifruit, olives, papayas, pineapples, and strawberries. ⁴Almonds, hazelnuts, macadamia nuts, pistachios, and walnuts. ⁵Preliminary. Avocados and guavas not included.

Table 247.—Fruits: Production in tons, United States, 1986–95 ¹

Year	Apples, commercial crop ²	Peaches	Pears	Grapes (fresh basis)	Cherries	Prunes and plums (fresh basis)	Apricots	Figs (fresh basis)	Olives
	1,000 tons	1,000 tons	1,000 tons	1,000 tons	1,000 tons	1,000 tons	1,000 tons	1,000 tons	1,000 tons
1986	3,930	1,153	767	5,228	250	491	55	50	112
1987	5,371	1,191	938	5,267	395	977	114	52	68
1988	4,560	1,311	860	6,034	304	739	102	56	88
1989	4,958	1,181	916	5,931	326	1,018	120	48	123
1990	4,828	1,121	962	5,660	261	734	122	50	132
1991	4,853	1,348	903	5,556	244	831	96	45	65
1992	5,284	1,336	923	6,052	373	829	106	47	165
1993	5,342	1,330	948	6,023	330	588	97	61	122
1994	5,750	1,257	1,046	5,874	352	879	153	57	84
1995 ³	5,546	1,174	944	5,753	357	734	59	50	78

Year	Or- anges ⁴	Tan- gerines ⁴	Grape- fruit ⁴	Lemons ⁴	Limes ⁴	Tan- gelos ⁴	Tem- ples ⁴	Straw- berries, commercial crop	Pine- apples
	1,000 tons	1,000 tons	1,000 tons	1,000 tons	1,000 tons	1,000 tons	1,000 tons	1,000 tons	1,000 tons
1986	7,476	196	2,352	692	76	133	133	512	646
1987	7,697	228	2,586	1,087	63	180	153	559	692
1988	8,551	218	2,801	785	57	189	160	590	659
1989	8,949	239	2,844	759	55	171	169	571	580
1990	7,745	164	1,978	706	72	132	63	627	575
1991	7,848	166	2,256	719	64	119	113	683	555
1992	8,909	260	2,224	766	70	117	106	667	550
1993	10,992	247	2,791	942	44	137	113	724	370
1994	10,329	318	2,661	984	9	150	101	825	365
1995 ³	11,616	275	2,912	916	10	142	114	749	345

Year	Avoca- dos ⁵	Nec- tarines	Cran- berries	Bananas	Kiwifruit	Dates	Pa- payas ⁶	Pome- granates	Total
	1,000 tons	1,000 tons	1,000 tons	1,000 tons	1,000 tons	1,000 tons	1,000 tons	1,000 tons	1,000 tons
1986	303	172	185	5	24	18	31	22	25,023
1987	209	191	170	6	29	19	34	19	28,294
1988	193	217	204	7	33	22	35	20	28,794
1989	139	220	187	6	40	22	37	19	29,627
1990	156	232	170	6	39	24	34	(7)	24,810
1991	185	215	211	6	30	22	28	(7)	27,160
1992	292	236	208	6	52	21	36	(7)	29,634
1993	144	205	196	6	49	29	32	(7)	31,859
1994	176	242	234	7	39	23	31	(7)	31,943
1995 ³	N.A.	176	206	6	35	22	23	(7)	32,254

¹For some crops in certain years, production includes some quantities unharvested for economic reasons or excess cullage fruit. ²Estimates of the commercial crop refer to production in orchards of 100 or more bearing-age trees. ³Preliminary. ⁴Year harvest was complete. ⁵Year of bloom. ⁶Total production and yield were not estimated for the 1988 and 1989 crops. ⁷Estimates discontinued after 1989 crop. N.A. = Not available.

NASS, Crops Branch, (202) 720-2127.

Table 248.—Apples, commercial crop: ¹ Production and season average price per pound, by States, 1993–95

State	Total production			Utilized production			Price ³ for crop of—		
	1993	1994	1995 ²	1993	1994	1995 ²	1993	1994	1995 ²
	<i>Million pounds</i>	<i>Million pounds</i>	<i>Million pounds</i>	<i>Million pounds</i>	<i>Million pounds</i>	<i>Million pounds</i>	<i>Dollars</i>	<i>Dollars</i>	<i>Dollars</i>
AZ	61.0	64.0	11.0	55.0	59.0	11.0	0.066	0.078	0.071
AR	12.0	8.0	10.0	11.0	7.5	9.5	.164	.164	.143
CA	880.0	1,050.0	1,000.0	880.0	1,050.0	1,000.0	.157	.133	.133
CO	92.0	85.0	55.0	90.0	83.0	53.0	.147	.157	.165
CT	24.5	25.0	20.0	24.0	24.0	19.0	.235	.283	.323
DE	28.0	20.0	21.0	28.0	20.0	21.0	.106	.168	.153
GA	34.0	26.0	32.0	31.0	22.0	28.0	.146	.139	.168
ID	195.0	165.0	70.0	193.8	158.0	70.0	.107	.101	.201
IL	90.0	47.0	80.0	85.0	41.0	71.0	.169	.209	.226
IN	80.0	50.0	75.0	74.0	47.5	70.0	.166	.200	.204
IA	9.5	12.0	10.0	8.3	10.8	9.0	.294	.244	.304
KS	7.0	5.0	6.5	4.0	4.5	5.0	.169	.206	.305
KY	22.0	7.0	17.0	18.0	6.5	12.5	.194	.216	.255
ME	54.0	54.0	72.0	53.0	52.0	67.0	.205	.174	.165
MD	42.0	35.0	48.0	42.0	35.0	48.0	.141	.173	.133
MA	59.0	62.5	61.5	55.0	58.0	57.0	.202	.226	.263
MI	1,020.0	1,020.0	1,220.0	1,020.0	1,020.0	1,220.0	.085	.086	.100
MN	23.0	23.2	22.0	19.7	20.8	18.7	.329	.332	.393
MO	51.0	33.0	38.0	47.0	33.0	37.0	.185	.198	.165
NH	36.5	41.0	44.0	36.0	40.0	42.0	.212	.217	.208
NJ	75.0	70.0	75.0	73.0	68.0	75.0	.159	.157	.150
NM	7.0	8.0	3.0	7.0	8.0	3.0	.251	.219	.374
NY	870.0	1,100.0	1,110.0	870.0	1,100.0	1,110.0	.116	.118	.119
NC	320.0	250.0	230.0	300.0	250.0	230.0	.058	.088	.091
OH	105.0	90.0	120.0	105.0	90.0	120.0	.160	.181	.169
OR	160.0	200.0	140.0	160.0	200.0	140.0	.131	.107	.149
PA	530.0	400.0	500.0	530.0	400.0	500.0	.086	.104	.111
RI	5.3	4.8	4.7	5.0	4.8	4.2	.293	.310	.311
SC	60.0	60.0	70.0	52.0	57.0	65.0	.131	.130	.157
TN	19.0	10.0	16.0	15.1	9.0	12.6	.169	.195	.222
UT	53.0	48.0	20.0	50.0	43.0	19.0	.121	.121	.188
VT	38.0	42.0	43.5	35.0	38.0	40.0	.170	.165	.190
VA	370.0	305.0	400.0	363.0	299.0	388.0	.076	.090	.081
WA	5,000.0	5,850.0	5,200.0	5,000.0	5,750.0	5,100.0	.142	.138	.210
WV	190.0	150.0	190.0	175.0	145.0	185.0	.082	.095	.095
WI	62.0	80.0	57.0	59.0	77.0	54.0	.224	.230	.247
US	10,684.8	11,500.5	11,092.2	10,573.9	11,331.4	10,914.5	.129	.129	.166

¹In orchards of 100 or more bearing-age trees. ²Preliminary. ³Fresh fruit prices are equivalent packinghouse-door returns for CA, NY, OR, and WA, and the average price as sold for other States. Quantities processed are priced at the equivalent processing plant door level.

NASS, Crops Branch, (202) 720-2127.

Table 249.—Apples: Production and value, United States, 1986–95

Year	Apples, commercial crop ¹			
	Total production	Utilized production	Marketing year average price ²	Value
	<i>Million pounds</i>	<i>Million pounds</i>	<i>Cents per pound</i>	<i>1,000 dollars</i>
1986	7,859.0	7,833.3	13.4	1,046,779
1987	10,742.1	10,451.3	8.6	903,060
1988	9,120.0	9,070.4	12.7	1,147,802
1989	9,916.8	9,871.4	10.4	1,024,557
1990	9,656.8	9,618.2	15.1	1,447,660
1991	9,706.7	9,636.8	17.9	1,727,013
1992	10,568.5	10,463.3	13.6	1,428,012
1993	10,684.8	10,573.9	12.9	1,363,944
1994	11,500.5	11,331.4	12.9	1,467,092
1995 ³	11,092.2	10,914.5	16.6	1,808,788

¹In orchards of 100 or more bearing-age trees. ²Fresh fruit prices are equivalent returns at packinghouse-door for CA, NY, OR, and WA, and for other States, returns at point of first sale. Processing prices are equivalent returns at processing plant door. ³Preliminary.

NASS, Crops Branch, (202) 720-2127.

Table 250.—Apples, fresh (dessert and cooking): Production in specified countries, 1991/92–1994/95¹

Continent and country	1991/92	1992/93	1993/94	1994/95 ²	Continent and country	1991/92	1992/93	1993/94	1994/95 ²
	<i>1,000 metric tons</i>	<i>1,000 metric tons</i>	<i>1,000 metric tons</i>	<i>1,000 metric tons</i>		<i>1,000 metric tons</i>	<i>1,000 metric tons</i>	<i>1,000 metric tons</i>	<i>1,000 metric tons</i>
North America:					Hungary	859.0	666.0	819.0	610
Canada	513.3	545.5	484.1	516.2	Other Europe—				
Mexico	550.0	580.0	538.0	475.0	Con.				
United States	4,412.9	4,798.4	4,846.5	5,141.7	Norway	50.8	45.0	58.6	45.3
Total	5,476.2	5,923.9	5,868.6	6,132.9	Russia	1,480.0	1,210.0	1,425.0	1,154.0
South America:					Turkey	1,900.0	2,100.0	2,080.0	2,095.0
Argentina	1,043.0	800.0	990.0	1,060.0	Total	4,434.9	4,238.5	4,492.5	3,980.8
Chile	840.0	850.0	800.0	860.0	Total Europe	10,157.9	14,886.2	13,328.2	13,033.8
Total	1,883.0	1,650.0	1,790.0	1,920.0	Africa:				
European Community:					South Africa,				
Austria ²	243.2	232.5	318.2	286.7	Rep	598.7	597.4	637.7	642.4
Belgium and					Total	598.7	597.4	637.7	642.4
Luxem-					Asia:				
bourg	139.0	492.1	530.2	527.7	China	4,540.0	6,556.0	9,070.0	11,125.0
Denmark	55.0	83.0	85.0	77.5	Japan	760.3	1,039.0	1,011.0	989.3
France	1,235.9	2,398.0	2,079.0	2,166.3	Taiwan	16.9	12.6	8.1	8.5
Germany	1,164.8	2,951.0	1,718.5	2,079.6	Total	5,317.2	7,607.6	10,089.1	12,122.8
Greece	180.0	350.0	325.3	322.0	Oceania:				
Italy	1,868.8	2,368.0	2,145.0	2,153.0	Australia	324.0	340.0	321.0	337.0
Netherlands ..	223.0	570.0	670.0	600.0	New Zealand	443.4	488.8	447.6	517.0
Spain	516.8	1,026.9	890.5	747.3	Total	767.4	828.8	768.6	854.0
Sweden ²	54.1	71.7	67.6	70.0	Total specified				
United King-					countries	24,200.4	31,493.9	32,482.2	34,705.9
dom	285.6	337.0	324.6	309.6					
Total EC	5,723.0	10,647.7	8,835.7	9,053.0					
Other Europe:									
Bulgaria	145.1	217.5	109.9	76.5					

¹ May include some cider varieties in countries not reporting separately. ² Austria and Sweden are now members of the European Union.

FAS, Horticultural and Tropical Products Division, (202) 720-3423. Prepared or estimated on the basis of official statistics of foreign governments, other foreign source materials, reports of U.S. Agricultural Counselors, Attachés, and Foreign Service Officers, results of office research, and related information.

Table 251.—Apples, commercial crop: Production and utilization, United States, 1986–95

Crop of—	Total production	Utilized production	Utilization of quantities sold				
			Fresh ¹	Processed (fresh basis)			
				Canned	Dried	Frozen	Other ^{2,3}
<i>Million pounds</i>	<i>Million pounds</i>	<i>Million pounds</i>	<i>Million pounds</i>	<i>Million pounds</i>	<i>Million pounds</i>	<i>Million pounds</i>	<i>Million pounds</i>
1986	7,859.0	7,833.3	4,463.6	1,179.0	199.4	257.3	1,734.0
1987	10,742.1	10,451.3	5,610.1	1,305.8	283.8	249.1	3,002.5
1988	9,120.0	9,070.4	5,230.3	1,399.1	285.0	265.7	1,890.3
1989	9,916.8	9,871.4	5,822.3	1,320.4	282.4	321.5	2,124.8
1990	9,656.8	9,618.2	5,515.0	1,378.3	270.3	303.8	2,150.8
1991	9,706.7	9,636.8	5,447.0	1,311.1	299.2	286.4	2,293.1
1992	10,568.5	10,463.3	5,767.0	1,498.1	324.2	246.6	2,627.4
1993	10,684.8	10,573.9	6,123.9	1,334.8	366.4	281.5	2,467.3
1994	11,500.5	11,331.4	6,366.2	1,405.7	414.6	304.4	2,840.5
1995 ⁴	11,092.2	10,914.5	N.A.	N.A.	N.A.	N.A.	N.A.

¹ Includes "Home use." ² Mostly crushed for vinegar, cider, and juice. For some States, small quantities canned, dried, and frozen are included. ³ Includes the following quantities of juice and cider (million pounds): 1986—1,643.1; 1987—2,928.8; 1988—1,823.6; 1989—2,068.1; 1990—2,076.8, 1991—2,193.6; 1992—2,472.0; 1993—2,382.3; and 1994—2,707.2. ⁴ Preliminary. N.A. = not available.

Table 252.—Apples, commercial crop: Production and utilization, by States, crop of 1994

State	Total production	Utilized production	Utilization					
			Fresh ¹	Processed (fresh basis)				
				Canned	Dried	Frozen	Juice and cider	Other ²
<i>Million pounds</i>	<i>Million pounds</i>	<i>Million pounds</i>	<i>Million pounds</i>	<i>Million pounds</i>	<i>Million pounds</i>	<i>Million pounds</i>	<i>Million pounds</i>	
CA	1,050.0	1,050.0	350.0	90.0	500.0
MI	1,020.0	1,020.0	320.0	255.0	110.0	325.0	10.0
NY	1,100.0	1,100.0	490.0	283.0	67.0	195.0	65.0
OR	200.0	200.0	150.0	31.0
PA	400.0	400.0	120.0	189.0	78.0
VA	305.0	299.0	65.0
WA	5,850.0	5,750.0	4,000.0	180.0	1,190.0
WV	150.0	145.0	35.0	72.2	25.3
Other States ³	1,425.5	1,367.4	836.2	336.5	414.6	127.4	362.9	58.3
US	11,500.5	11,331.4	6,366.2	1,405.7	414.6	304.4	2,707.2	133.3

¹ Includes "Home use." ² Mostly vinegar, wine, and jam. ³ AZ, AR, CO, CT, DE, GA, ID, IL, IN, IA, KS, KY, ME, MD, MA, MN, MO, NH, NJ, NM, NC, OH, RI, SC, TN, UT, VT, and WI.
NASS, Crops Branch, (202) 720-2127.

Table 253.—Apples, fresh: United States exports by country of destination and imports by country of origin, 1992/93-1994/95

Country	Year beginning July			Country	Year beginning July		
	1992/93	1993/94	1994/95		1992/93	1993/94	1994/95
	<i>Metric tons</i>	<i>Metric tons</i>	<i>Metric tons</i>		<i>Metric tons</i>	<i>Metric tons</i>	<i>Metric tons</i>
Exports				Exports			
Europe:				Netherlands Antilles	857	559	474
Finland	2,311	1,114	3,190	Trinidad and Tobago	419	409	550
France	18	379	1,684	Other countries	31	76	62
Iceland	1,311	1,487	1,954	Total	4,507	5,432	6,555
Ireland	1,970	1,689	2,283	Asia:			
Netherlands	556	4,055	2,055	Taiwan	113,733	99,053	115,342
Norway	1,411	334	189	Hong Kong	47,234	61,585	74,782
Sweden	3,283	3,192	4,967	Indonesia	10,855	21,648	43,268
United Kingdom	19,909	22,143	28,090	Malaysia	9,680	17,135	20,216
Other countries	661	3,724	10,392	Other Pacific Islands	110	175	45
Total	31,430	38,117	54,804	Philippines	8,164	11,510	16,522
Latin America:				Singapore	10,846	15,193	19,056
Brazil	621	1,513	21,751	Thailand	18,081	31,005	34,223
Colombia	5,393	4,402	10,189	Other countries:			
Costa Rica	5,251	6,350	6,871	Canada	83,089	80,913	80,941
El Salvador	1,611	933	578	French Pacific Islands	359	327	379
Guatemala	565	1,938	2,281	Kuwait	1,038	2,329	3,710
Nicaragua	558	180	175	New Zealand	1,363	143	105
Mexico	99,364	152,059	87,269	Saudi Arabia	14,811	19,145	28,219
Honduras	1,064	2,019	1,281	United Arab Emirates	4,647	7,720	17,311
Panama	2,283	3,153	3,194	Other countries	1,361	9,696	34,868
French Guiana	95	59	60	Total	325,371	377,577	488,987
Venezuela	10,250	11,849	7,864	Grand total	489,346	608,577	697,829
Other countries	983	2,996	5,970	Imports			
Total	128,038	187,451	147,483	Australia	115	0	0
Bermuda and Caribbean:				Canada	46,611	29,886	43,220
Bahamas	33	9	67	Chile	22,217	23,465	20,323
Barbados	130	257	420	New Zealand	28,513	28,387	39,444
Bermuda	244	156	78	South Africa	9,676	19,044	19,167
Dominican Republic	2,037	3,266	3,657	Other countries	3,269	10,293	4,250
French West Indies	692	576	555	Total	110,401	111,075	126,404
Haiti	0	68	640				
Leeward and Windward Islands	64	56	52				

FAS, Horticultural and Tropical Products Division, (202) 720-6590. Compiled from reports of the U.S. Department of Commerce. Use 1995's data

Table 254.—Apples: ¹ Foreign trade, United States, 1984–93

Year beginning October	Imports, fresh and dried, in terms of fresh	Domestic exports		Year beginning October	Imports, fresh and dried, in terms of fresh	Domestic exports	
		Fresh	Dried, in terms of fresh ¹			Fresh	Dried, in terms of fresh ¹
	<i>Metric tons</i>	<i>Metric tons</i>	<i>Metric tons</i>		<i>Metric tons</i>	<i>Metric tons</i>	<i>Metric tons</i>
1984	132,632	205,239	9,256	1989	119,732	357,442	23,688
1985	152,566	147,122	5,520	1990	121,996	371,309	55,512
1986	149,448	175,104	10,528	1991	143,926	530,073	44,192
1987	132,673	296,176	7,680	1992	139,271	487,817	22,080
1988	132,988	254,478	11,984	1993	662,906	19,224

¹ Dried converted to terms of fresh apples on following basis; 1 pound dried is equivalent to 8 pounds fresh. No re-exports reported.
ERS, Field and Specialty Crops Branch, (202) 219-0840.

Table 255.—Apricots: Production and value, United States, 1986–95 ¹

Year	Total production	Utilized production	Market year average price per ton ²	Value	Year	Total production	Utilized production	Market year average price per ton ²	Value
	<i>Tons</i>	<i>Tons</i>	<i>Dollars</i>	<i>1,000 dollars</i>		<i>Tons</i>	<i>Tons</i>	<i>Dollars</i>	<i>1,000 dollars</i>
1986	54,650	54,600	403.00	21,987	1991	95,800	91,790	407.00	37,356
1987	114,350	106,250	347.00	36,882	1992	106,400	106,300	356.00	37,838
1988	101,600	93,500	363.00	33,927	1993	97,350	97,340	398.00	38,694
1989	120,000	118,950	338.00	40,222	1994	153,200	140,180	349.00	48,883
1990	122,450	120,440	340.00	40,937	1995 ³	58,500	58,500	468.00	27,387

¹ Production, price, and value for CA, UT, and WA. ² Fresh fruit prices are equivalent packing-house-door returns for CA and WA. Quantities processed are priced at the equivalent processing plant door level. ³ Preliminary.
NASS, Crops Branch, (202) 720-2127.

Table 256.—Apricots: Production and marketing year average price per ton, by States, 1993–95

State	Total production			Utilized production			Price ² for crop of—		
	1993	1994	1995 ¹	1993	1994	1995 ¹	1993	1994	1995 ¹
	<i>Tons</i>	<i>Tons</i>	<i>Tons</i>	<i>Tons</i>	<i>Tons</i>	<i>Tons</i>	<i>Dollars</i>	<i>Dollars</i>	<i>Dollars</i>
CA	89,000	145,000	52,000	89,000	132,000	52,000	363.00	331.00	392.00
UT	250	400	(³)	240	380	(³)	525.00	511.00	(³)
WA	8,100	7,800	6,500	8,100	7,800	6,500	775.00	640.00	1,074.00
Total	97,350	153,200	58,500	97,340	140,180	58,500	398.00	349.00	468.00

¹ Preliminary. ² Fresh fruit prices are equivalent packinghouse-door returns for CA and WA. Quantities processed are priced at the equivalent processing plant door level. ³ No significant commercial production in 1995 due to frost damage.
NASS, Crops Branch, (202) 720-2127.

Table 257.—Apricots: Production and utilization, United States,¹ 1986–95

Crop of—	Total production	Utilized production	Utilization of quantities sold			
			Fresh ²	Processed (fresh basis) ³		
				Canned ⁴	Dried	Frozen
	Tons	Tons	Tons	Tons	Tons	Tons
1986	54,650	54,600	10,350	27,550	9,500	7,200
1987	114,350	106,250	15,950	53,000	23,600	13,100
1988	101,600	93,500	18,200	44,500	17,700	12,200
1989	120,000	118,950	15,750	67,000	25,000	11,000
1990	122,450	120,440	23,740	64,000	21,000	11,000
1991	95,800	91,790	20,140	43,000	17,000	11,000
1992	106,400	106,300	23,200	53,000	16,000	13,000
1993	97,350	97,340	21,410	45,000	18,000	11,500
1994	153,200	140,180	26,740	71,000	30,500	10,500
1995 ⁵	58,500	58,500	16,800	28,000	7,800	5,200

¹CA, UT, and WA. ²Includes "Home use." ³CA only ⁴Includes some quantities frozen or otherwise processed. ⁵Preliminary.
NASS, Crops Branch, (202) 720-2127.

Table 258.—Apricots: Production and utilization, by States, crop of 1995 (preliminary)

State	Total production	Utilized production	Utilization			
			Fresh	Processed (fresh basis) ¹		
				Canned ²	Dried	Frozen
	Tons	Tons	Tons	Tons	Tons	Tons
CA ³
UT ³
WA ³
US	58,500	58,500	16,800	28,000	7,800	5,200

¹CA only. ²Some quantities used for juice are included in "Canned" to avoid disclosure of individual operations. ³Missing data not published to avoid disclosure of individual operations, but included in U.S. total.
NASS, Crops Branch, (202) 720-2127.

Table 259.—Apricots: Foreign trade, United States, 1984–93

Year beginning October	Domestic exports				
	Fresh	Canned ¹	Dried ¹	Dried, in fruit salad ²	Total, in terms of fresh ³
	Metric tons	Metric tons	Metric tons	Metric tons	Metric tons
1984	(4)	342	(4)	243	1,494
1985	(4)	371	(4)	270	1,654
1986	(4)	387	(4)	228	1,450
1987	(4)	906	(4)	169	1,519
1988	3,447	884	774	366	9,939
1989	4,836	1,008	1,311	379	14,246
1990	4,894	1,519	1,207	421	14,351
1991	4,795	1,763	1,362	414	15,187
1992	5,167	1,269	1,214	428	14,517
1993	7,650	760	1,188	488	16,810

¹Net processed weight. ²Dried apricots are 12 1/3 percent of total dried fruit for salad. ³Dried fruit converted to unprocessed dry weight by dividing by 1.07. Unprocessed dry weight converted to terms of fresh fruit on the basis that 1 pound dried equals 5.5 pounds fresh. Canned apricots converted to terms of fresh on the basis that 1 pound canned equals 0.717 pounds fresh. ⁴Not available.
ERS, Field and Specialty Crops Branch, (202) 219-0840.

Table 260.—Avocados: Production, marketing year average price per ton, and value, United States, 1985–86 to 1994–95

Season	California			Florida			California and Florida ³		
	Production ¹	Price ²	Value	Production ¹	Price ²	Value	Production ¹	Price ²	Value
	Tons	Dollars	1,000 dollars	Tons	Dollars	1,000 dollars	Tons	Dollars	1,000 dollars
1985–86	160,000	1,020	163,200	28,500	576	16,415	188,500	953	179,615
1986–87	278,000	338	93,964	24,700	412	10,176	302,700	344	104,140
1987–88	180,000	1,140	205,200	29,000	312	9,048	209,000	1,030	214,248
1988–89	165,000	1,260	207,900	27,000	436	11,772	192,000	1,140	219,672
1989–90	105,000	2,280	239,400	33,500	332	11,122	138,500	1,809	250,522
1990–91	136,000	1,410	191,760	19,600	684	13,406	155,600	1,319	205,166
1991–92	156,000	1,170	182,520	28,300	476	13,471	184,300	1,063	195,991
1992–93	284,000	400	113,600	7,200	583	4,198	291,200	405	117,798
1993–94	139,000	1,810	251,590	4,400	820	3,608	143,400	1,780	255,198
1994–95 ⁴	156,000	1,490	232,440	20,000	616	12,320	176,000	1,391	244,760

¹ Production is the quantity sold or utilized. ² Quantities processed are priced at the equivalent processing plant door level. ³ Season from Nov. 1 to Nov. 30 (following year) for California and June 20 to Feb. 28 for Florida. ⁴ Preliminary.
 NASS, Crops Branch, (202) 720–2127.

Table 261.—Avocados: Foreign trade, United States, 1984–93

Year beginning October	Imports	Year beginning October	Imports
	Metric tons		Metric tons
1984	3,107	1989	8,865
1985	5,181	1990	11,214
1986	4,171	1991	22,816
1987	2,455	1992	18,466
1988	4,523	1993	14,213

ERS, Field and Specialty Crops Branch, (202) 219–0840.

Table 262.—Bananas: Area, yield, production, marketing year average price, and value, Hawaii, 1986–95

Year	Area harvested	Yield per acre	Production	Price per pound	Value	Year	Area harvested	Yield per acre	Production	Price per pound	Value
	Acres	1,000 pounds	1,000 pounds	Cents	1,000 dollars		Acres	1,000 pounds	1,000 pounds	Cents	1,000 dollars
1986	980	9.9	9,700	30.0	2,910	1991	890	12.8	11,400	41.0	4,674
1987	1,070	10.7	11,400	29.7	3,386	1992	870	13.8	12,000	41.0	4,920
1988	1,070	12.3	13,200	33.0	4,356	1993	880	13.3	11,700	38.0	4,446
1989	1,000	11.9	11,900	36.5	4,344	1994	930	14.7	13,700	37.0	5,069
1990	930	12.2	11,300	38.0	4,294	1995 ¹	930	12.9	12,000	38.0	4,560

¹ Preliminary.
 NASS, Crops Branch, (202) 720–2127.

CHERRIES

V-9

Table 263.—Cherries: Production and value, United States, 1986–95

Year	All varieties			Sweet varieties				Tart varieties			
	Total production	Utilized production	Value	Total production	Utilized production	Market-ing year average price per ton ¹	Value	Total production	Utilized production	Market-ing year average price per pound ¹	Value
	Tons	Tons	1,000 dollars	Tons	Tons	Dol-lars	1,000 dollars	Million pounds	Million pounds	Cents	1,000 dollars
1986	249,760	245,960	156,859	137,710	136,760	823.00	112,593	224.1	218.4	20.3	44,266
1987	394,500	356,020	181,653	215,000	213,020	748.00	159,296	359.0	286.0	7.8	22,357
1988	304,300	301,260	189,105	186,200	184,510	788.00	145,330	236.2	233.5	18.7	43,775
1989	325,500	312,430	171,473	193,450	190,930	713.00	136,125	264.1	243.0	14.5	35,348
1990	261,130	233,800	155,004	156,730	132,350	894.00	118,319	208.8	202.9	17.6	36,685
1991	243,500	234,750	223,492	148,550	139,900	968.00	135,410	189.9	189.7	46.4	88,082
1992	372,550	348,150	230,575	205,000	191,650	915.00	175,345	335.1	313.0	17.6	55,230
1993	330,250	288,875	221,057	168,550	160,575	1,190.00	190,886	323.4	256.6	11.8	30,171
1994	352,400	334,060	246,496	207,300	192,910	1,040.00	200,574	290.2	282.3	16.3	45,922
1995 ² ...	357,250	302,650	N.A.	165,250	152,850	1,260.00	193,120	384.0	299.6	N.A.	N.A.

¹ Fresh fruit prices are equivalent packinghouse-door returns for Western States, and the average price as sold for other States. Quantities processed are priced at the equivalent processing plant door level. ² Preliminary N.A. = not available.

NASS, Crops Branch, (202) 720-2127.

Table 264.—Cherries: Production and season average price, by States, 1993–95

Variety and State	Total production			Utilized production			Price ² for crop of—		
	1993	1994	1995 ¹	1993	1994	1995 ¹	1993	1994	1995 ¹
	Tons	Tons	Tons	Tons	Tons	Tons	Dollars per ton	Dollars per ton	Dollars per ton
SWEET VARIETIES									
CA	19,000	52,000	19,800	19,000	52,000	19,800	2,270.00	1,220.00	2,100.00
ID	1,500	1,400	700	1,470	1,300	680	754.00	1,450.00	1,610.00
MI	30,000	25,000	27,000	27,000	23,000	27,000	693.00	587.00	581.00
MT	900	750	650	105	640	540	1,590.00	1,200.00	1,340.00
NY	700	900	1,100	700	820	1,000	850.00	850.00	960.00
OR	34,000	42,000	38,000	34,000	38,000	31,000	893.00	732.00	766.00
PA	1,200	950	1,000	1,100	900	930	1,420.00	1,840.00	1,300.00
UT	1,250	2,300	2,000	1,200	2,250	1,900	958.00	902.00	866.00
WA	80,000	82,000	75,000	76,000	74,000	70,000	1,240.00	1,200.00	1,520.00
Total 9 States ..	168,550	207,300	165,250	160,575	192,910	152,850	1,190.00	1,040.00	1,260.00
TART VARIETIES									
CO	1.6	1.5	1.2	.9	1.1	1.0	24.9	35.5	(³)
MI	270.0	210.0	310.0	215.0	210.0	250.0	11.4	17.0	(³)
NY	15.7	26.0	32.0	15.2	23.7	20.0	10.3	12.4	(³)
OR	3.0	8.0	1.6	2.8	7.6	1.5	15.2	15.6	(³)
PA	11.5	9.0	9.5	10.8	9.0	9.5	18.1	26.5	(³)
UT	15.0	26.5	22.0	7.5	22.0	13.0	12.8	10.3	(³)
WI	6.6	9.2	7.7	4.4	8.9	4.6	9.8	12.7	(³)
Total 7 States ..	323.4	290.2	384.0	256.6	282.3	299.6	11.8	16.3	(³)

¹ Preliminary. ² Fresh fruit prices are equivalent packinghouse-door returns for CA, OR, and WA, and the average price as sold for other States. Quantities processed are priced at the equivalent processing plant door level. ³ Not available.

NASS, Crops Branch, (202) 720-2127.

Table 265.—Cherries: Production and utilization, by States, crop of 1995 (preliminary)

Variety and State	Total production	Utilized production	Utilization			
			Fresh ¹	Processed (fresh basis)		
				Canned and otherwise processed ²	Frozen	Brined
SWEET VARIETIES	<i>Tons</i>	<i>Tons</i>	<i>Tons</i>	<i>Tons</i>	<i>Tons</i>	<i>Tons</i>
CA	19,800	19,800	11,000
MI	27,000	27,000	1,000	2,800	2,900	20,300
OR	38,000	31,000	5,500	4,000	3,500	18,000
WA	75,000	70,000	43,000	6,000	7,500	13,500
Other States ³	5,450	5,050	3,700	2,590	7,560
US	165,250	152,850	64,200	12,800	16,490	59,360
TART VARIETIES						
MI	155,000	125,000	500	35,000	80,000	9,500
Other States ⁴	37,000	24,800	850	11,800	11,400	750
US	192,000	149,800	1,350	46,800	91,400	10,250

¹ Includes "Home use." ² Sweet varieties include some quantities used for juice, wine, brandy, freezing, etc.; tart varieties include some quantities used for juice, jam, jelly, brining, etc. ³ ID, MT, NY, PA, and UT. ⁴ CO, NY, PA, UT, and WI.

NASS, Crops Branch, (202) 720-2127.

Table 266.—Cherries: Production and utilization, United States,¹ 1986-95

Crop of—	Total production	Utilized production	Utilization of quantities sold			
			Fresh ²	Processed (fresh basis)		
				Canned ^{3,4}	Frozen	Brined
SWEET VARIETIES	<i>Tons</i>	<i>Tons</i>	<i>Tons</i>	<i>Tons</i>	<i>Tons</i>	<i>Tons</i>
1986	137,710	136,760	68,320	17,900	50,540
1987	215,000	213,020	108,140	29,950	74,930
1988	186,200	184,510	87,230	29,660	67,620
1989	193,450	190,930	103,510	29,420	58,000
1990	156,730	132,350	70,500	22,200	39,650
1991	148,550	139,900	66,680	21,550	51,670
1992	205,000	191,650	95,020	30,050	66,580
1993	168,550	160,575	79,810	23,000	57,765
1994	207,300	192,910	99,460	29,000	64,450
1995 ⁵	165,250	152,850	64,200	29,290	59,360
TART VARIETIES	<i>Million pounds</i>	<i>Million pounds</i>	<i>Million pounds</i>	<i>Million pounds</i>	<i>Million pounds</i>	<i>Million pounds</i>
1986	224.1	218.4	5.5	53.4	159.5
1987	359.0	286.0	9.1	88.7	188.2
1988	236.2	233.5	5.0	67.0	161.5
1989	264.1	243.0	6.7	60.1	176.2
1990	208.8	202.9	5.1	78.0	119.8
1991	189.9	189.7	3.7	65.7	120.3
1992	335.1	313.0	8.8	90.2	214.0
1993	323.4	256.6	5.2	96.1	155.3
1994	290.2	282.3	3.5	105.1	173.7
1995 ⁵	384.0	299.6	2.7	114.1	182.8

¹ CA, CO, ID, MI, MT, NY, OR, PA, UT, WA, and WI. ² Includes "Home use." ³ For tart varieties, includes small quantities brined or used for juice, wine, preserves, and candied cherries. ⁴ Sweet varieties includes small quantities used for juice, wine, brandy, etc. ⁵ Preliminary.

NASS, Crops Branch, (202) 720-2177.

Table 267.—Cherries: Foreign trade, United States, 1984-93

Year beginning October	Imports		Domestic exports		Year beginning October	Imports		Domestic exports	
	Fresh	Dried and preserved	Fresh	Canned		Fresh	Dried and preserved	Fresh	Canned
1984	2,629	1,078	7,103	1,576	1989	1,837	1,712	22,652	2,383
1985	4,541	1,924	11,438	2,452	1990	1,615	1,191	18,824	2,479
1986	2,047	723	23,918	2,640	1991	1,553	1,373	31,008	4,090
1987	3,388	455	25,899	2,293	1992	1,982	2,224	25,742	4,915
1988	2,420	1,020	27,066	2,207	1993	1,633	2,859	30,640	4,684

ERS, Field and Specialty Crops Branch, (202) 219-0887.

Table 268.—Citrus fruit: Production and value, United States, for season of 1985–86 to 1994–95

Season ¹	Oranges ⁴		Grapefruit		Lemons		Limes		Tangerines ⁶		Tangelos		Temples		K-Early Citrus	
	Production	Marketing year average returns per box ²	Value	Quantities processed ³	Production	Marketing year average returns per box ²	Value	Quantities processed ³	Production	Marketing year average returns per box ²	Value	Quantities processed ³	Production	Marketing year average returns per box ²	Value	Quantities processed ³
	<i>1,000 boxes</i>	<i>Dollars</i>	<i>1,000 dollars</i>	<i>1,000 boxes</i>	<i>1,000 boxes</i>	<i>Dollars</i>	<i>1,000 dollars</i>	<i>1,000 boxes</i>								
1985–86	175,440	6.18	1,090,428	120,945	57,870	5.87	341,957	30,550	4,700	13.34	61,952	1,521	2,950	6.49	19,141	1,612
1986–87	181,175	7.29	1,322,499	127,860	63,775	6.53	414,395	33,692	5,470	12.89	69,720	1,651	4,000	6.16	24,626	2,690
1987–88	200,250	8.92	1,773,681	146,729	68,700	7.01	478,588	35,505	5,140	15.67	80,400	1,502	4,200	7.76	32,605	2,805
1988–89	209,050	8.90	1,848,467	157,191	69,500	6.00	416,041	34,873	5,590	14.92	83,075	1,956	3,800	8.26	31,392	2,452
1989–90	184,415	7.96	1,465,072	129,571	49,300	7.49	371,897	26,686	3,950	18.15	71,738	1,251	2,950	7.04	20,778	1,832
1990–91	178,950	8.70	1,584,746	148,881	55,500	7.16	395,903	24,685	3,900	19.21	74,603	1,251	2,650	8.10	21,459	1,464
1991–92	209,610	7.43	1,545,200	154,872	55,265	7.84	428,118	23,919	6,240	17.11	104,248	1,715	2,600	9.14	23,753	1,293
1992–93	255,760	5.77	1,489,938	193,992	68,375	4.40	301,614	36,710	5,850	14.48	83,222	1,618	3,050	5.29	16,147	1,734
1993–94	240,450	6.37	1,541,277	182,435	65,100	4.91	319,081	33,231	7,400	12.57	92,055	2,007	3,350	5.47	18,323	2,253
1994–95 ⁵	268,505	5.76	1,563,507	212,839	71,050	4.18	300,677	38,370	6,400	14.81	94,489	1,656	3,150	4.41	13,884	2,044
1985–86	2,950	5.44	16,052	2,037												
1986–87	3,400	6.03	20,513	2,347												
1987–88	3,550	7.87	27,940	2,258												
1988–89	3,750	7.43	27,844	2,881												
1989–90	1,400	7.62	10,668	1,261												
1990–91	2,500	8.32	20,792	1,706												
1991–92	2,350	8.50	19,979	1,502												
1992–93	2,500	4.98	12,458	1,553	185	7.43	1,375	52								
1993–94	2,250	5.64	12,687	1,465	210	4.47	939	50								
1994–95 ⁵	2,550	5.51	14,050	1,763	120	4.38	526	55								

¹ See footnote 1, table 269. ² Equivalent returns per box at the intake packinghouse door for all methods of sale. ³ Includes quantities used for juice, concentrates, grapefruit segments, and other citrus products. In some seasons, includes appreciable quantities of oranges and lemons in CA delivered to processing plants which were not utilized, but for which growers received payment. ⁴ Includes small quantities of tangerines in TX. Excludes FL temples. ⁵ Preliminary. ⁶ FL "All tangerines" include Sunburst tangerines beginning with the 1989–90 season.

NASS, Crops Branch, (202) 720-2127.

Table 269.—Citrus fruit: Production and marketing year average returns per box, by States, 1993-94 to 1995-96

Crop and State	Production of crop for season ¹ of—			Price ³ of crop for season of—		
	1992-93	1993-94	1994-95 ²	1992-93	1993-94	1994-95 ²
ORANGES						
Early, midseason, and Navel varieties: ⁴	<i>1,000 boxes</i>	<i>1,000 boxes</i>	<i>1,000 boxes</i>	<i>Dollars</i>	<i>Dollars</i>	<i>Dollars</i>
AZ	700	700	400	7.56	8.18	10.06
CA	43,800	36,600	35,000	6.32	7.97	7.82
FL	114,300	107,300	119,700	5.13	5.76	4.63
TX	450	480	950	8.20	9.40	4.33
Total early, midseason, and Navel varieties ⁵	159,250	145,080	156,050	5.44	6.27	5.26
Valencia:						
AZ	1,150	1,200	650	3.67	5.70	5.52
CA	23,000	27,000	26,000	8.48	6.32	7.09
FL	72,300	67,100	85,700	5.78	6.61	6.28
TX	60	70	105	7.75	7.36	6.76
Total Valencia ⁵	96,510	95,370	112,455	6.32	6.53	6.44
All oranges:						
AZ	1,850	1,900	1,050	5.15	6.61	7.25
CA	66,800	63,600	61,000	7.07	7.27	7.51
FL	186,600	174,400	205,400	5.38	6.08	5.32
TX	510	550	1,055	8.15	9.14	4.58
US, all oranges ⁵	255,760	240,450	268,505	5.77	6.37	5.76
GRAPEFRUIT						
AZ	2,150	1,750	1,400	3.23	2.88	5.81
CA, all	9,200	9,300	9,300	4.91	5.44	5.68
Desert	3,500	3,400	3,300	4.18	3.69	4.37
Other areas	5,700	5,900	6,000	5.34	6.45	6.40
FL, all	55,150	51,050	55,700	4.29	4.86	4.02
Colored seedless	27,700	25,500	28,700	4.75	4.87	3.70
White seedless	25,700	24,500	25,400	3.86	4.92	4.43
Other	1,750	1,050	1,300	3.48	3.43	3.25
TX	1,875	3,000	4,650	6.86	5.08	3.34
US, all grapefruit ⁵	68,375	65,100	71,050	4.40	4.91	4.18
LEMONS						
AZ	4,400	5,200	3,600	8.42	9.68	10.33
CA	20,400	20,700	20,500	9.94	10.00	11.14
US, lemons ⁵	24,800	25,900	24,100	9.67	9.94	11.02
LIMES						
FL	1,000	200	230	6.55	18.46	14.47
TANGELOS						
FL	3,050	3,350	3,150	5.29	5.47	4.41
TANGERINES						
AZ	950	1,000	650	12.59	11.23	16.27
CA	2,100	2,300	2,200	11.99	11.15	13.76
FL	2,800	4,100	3,550	16.46	13.46	15.11
US, tangerines ⁵	5,850	7,400	6,400	14.48	12.57	14.81
TEMPLES						
FL	2,500	2,250	2,550	4.98	5.64	5.51
K-EARLY CITRUS						
FL	185	210	120	7.43	4.47	4.38

¹ Season begins with the bloom of the first year shown and ends with completion of harvest the following year. For oranges, harvest in CA usually starts in late October of the first year shown and continues into December of the following year. In other States, harvest of oranges begins about Oct. 1 and ends in early summer. Grapefruit harvest for the CA desert and for all other States begins in the fall and ends by early summer. Harvest of other CA grapefruit begins in March of the year after bloom through October. CA lemons are harvested from Aug. 1 to July 31; AZ lemons are harvested from Aug. 15 to Feb. 1. FL limes are picked mostly from April through March. FL tangelos are harvested largely from October through April. Tangerines harvest is from Nov to April. Temples are harvested from Dec to May. ² Preliminary. ³ Equivalent returns per box at the intake packinghouse-door for all methods of sale. ⁴ Navel and miscellaneous varieties in AZ and CA; early and midseason varieties in FL and TX, including small quantities of tangerines in TX. ⁵ Net content of box varies. Approximate averages are as follows: Oranges—AZ and CA, 75 pounds; FL, 90 pounds; and TX, 85 pounds; grapefruit—AZ and CA desert, 64 pounds; (67 pounds beginning in 1993-94); other CA areas, 67 pounds; FL, 85 pounds; TX, 80 pounds; lemons—76 pounds; limes—88 pounds; tangelos—90 pounds; tangerines—AZ and CA, 75 pounds; FL, 95 pounds; and temples—90 pounds.

Table 270.—Citrus fruits: Production in specified countries, 1992–93 to 1994–95¹

Commodity and country	1992–93	1993–94	1994–95 ²	Commodity and country	1992–93	1993–94	1994–95 ²
	1,000 metric tons	1,000 metric tons	1,000 metric tons		1,000 metric tons	1,000 metric tons	1,000 metric tons
Oranges:							
Egypt	1,771	1,489	1,350	Italy	500	509	470
Cuba	379	350	350	Total	11,841	11,830	11,786
Gaza Strip	87	87	87	Grapefruit:			
Cyprus	160	160	166	Cuba	308	232	230
Argentina	660	746	730	Gaza Strip	9	9	9
Brazil	14,648	13,710	16,120	Cyprus	110	112	100
China	1,575	1,610	1,680	Argentina	177	195	200
Japan	39	33	28	Mexico	118	128	135
Mexico	2,913	2,810	2,700	United States ³	2,532	2,409	2,636
Spain	2,926	2,509	2,660	Israel	383	335	425
United States ³	10,074	9,419	10,724	South Africa	118	165	163
Australia	578	588	470	Turkey	40	48	52
Morocco	874	916	600	Italy	6	7	7
Israel	377	343	372	Total	3,801	3,640	3,957
Greece	1,042	854	865	Lemons:			
South Africa	712	745	735	Gaza Strip	8	8	8
Turkey	820	840	850	Cyprus	48	45	40
Italy	2,111	2,100	1,650	Argentina	605	653	660
Total	41,746	39,309	42,137	Brazil ⁵	53	63	67
Tangerines:				Mexico	7	10	12
Egypt	340	290	350	Spain	743	611	605
Cuba	15	6	6	United States	855	893	845
Israel	115	93	135	Australia	37	34	35
South Korea	719	619	555	Morocco	20	20	20
Japan	2,019	1,751	1,497	Israel	18	25	25
China	4,396	4,500	4,700	Greece	169	135	125
Turkey	390	405	410	South Africa	60	53	52
Brazil ⁵	553	605	585	Turkey	420	440	450
Spain	1,521	1,622	1,751	Italy	746	743	640
United States ⁴	348	425	382	Total	3,789	3,733	3,584
Argentina	345	394	395				
Morocco	317	373	300				
Greece	78	73	75				
Mexico	185	165	175				

¹ Split years refer to harvest periods which usually begin in the fall and extend through the following spring. This corresponds roughly with October–June in the Northern Hemisphere and April–December of the second year shown in the Southern Hemisphere. ² Preliminary. ³ Includes temple oranges. ⁴ Includes tangelos. ⁵ Sao Paulo only.

FAS, Horticultural and Tropical Products Division, (202) 720–3423. Prepared or estimated on the basis of official statistics of foreign governments, other foreign source materials, reports of U.S. Agricultural Counselors, Attaches, and Foreign Service Officers, results of office research, and related information. U.S. data are from USDA Agricultural Statistics Board.

Table 271.—Concentrated citrus juices: Annual packs, Florida, 1984–93

Season beginning December	Frozen concentrated juice ¹		
	Orange ²	Grapefruit ²	Tangerine
	1,000 gallons	1,000 gallons	1,000 gallons
1984	118,472	24,802	797
1985	132,405	24,162	1,029
1986	145,056	28,875	373
1987	169,973	31,906	583
1988	174,717	32,466	495
1989	90,285	21,774	371
1990	151,396	21,672	279
1991	145,421	19,458	297
1992	208,662	31,527	329
1993	182,231	26,485	529

¹ Net pack. ² Frozen orange juice reported in 42.0° Brix; Grapefruit 40.0° Brix. Includes concentrated juice for manufacture.

ERS, Field and Specialty Crops Branch, (202) 219–0840.

Table 272.—Canned citrus juices: Annual pack, Florida, 1984–93

Season beginning October	Juice (single-strength) ¹		
	Orange	Grapefruit	Blend
	<i>1,000 cases</i>	<i>1,000 cases</i>	<i>1,000 cases</i>
1984	7,425	10,552	615
1985	7,596	9,948	577
1986	8,122	8,982	533
1987	7,256	7,724	449
1988	8,164	7,956	424
1989	6,640	5,986	334
1990	7,130	6,678	450
1991	7,652	5,822	309
1992	7,922	5,751	197
1993	6,849	5,375	161

¹ Equivalent cases of 24 No. 2 cans.
ERS, Field and Specialty Crops Branch, (202) 219-0887.

Table 273.—Citrus juice: United States exports by kind, 1984/85–1993/94

Year beginning November	Orange juice			Grapefruit juice		
	Single strength	Concentrate		Single strength	Concentrate	
		Hot pack	Frozen		Hot pack	Frozen
	<i>1,000 gallons</i>	<i>1,000 gallons</i>	<i>1,000 gallons</i>	<i>1,000 gallons</i>	<i>1,000 gallons</i>	<i>1,000 gallons</i>
1984/85	6,075	3,736	47,372	1,575	1,556	10,951
1985/86	3,534	3,479	37,377	1,482	2,197	8,970
1986/87	4,495	3,586	50,240	2,107	1,928	12,814
1987/88	7,560	4,356	54,121	2,716	2,148	19,102
1988/89	11,064	5,401	56,498	4,932	1,448	10,916
1989/90	863	8,903	78,416	465	5,986	9,114
1990/91	0	11,624	85,074	0	6,002	9,984
1991/92	0	18,812	87,845	0	7,678	15,913
1992/93	0	24,309	91,973	0	7,000	15,847
1993/94	0	34,706	69,299	0	6,360	10,360

Omitted data is misleading. Although reporting of concentrated juices was changed from concentrated to single-strength gallons in January 1978, some customs ports failed to switch recording methods until later. Frozen and hot pack exports from October 1980 onward are in single strength rather than concentrated equivalents.

U.S. export data to Canadian destinations prior to 1990 used in this chart are not accurate because late-night shipments were not recorded.

In 1989/90 the tariff code system was changed. Harmonized tariff code 2009190000 includes both hot pack and single-strength orange juices, which are now both included only in the hot pack column.

FAS, Horticultural and Tropical Products Division, (202) 720-3423. Compiled from reports of the U.S. Department of Commerce.

Table 274.—Oranges, fresh:¹ United States exports by country of destination, 1991/92–1993/94

Country of destination	Year beginning November			Country of destination	Year beginning November		
	1991/92	1992/93	1993/94		1991/92	1992/93	1993/94
	<i>Metric tons</i>	<i>Metric tons</i>	<i>Metric tons</i>		<i>Metric tons</i>	<i>Metric tons</i>	<i>Metric tons</i>
Europe:				North America:			
Belgium and Luxembourg	288	75	0	Canada	170,992	206,881	188,551
Denmark	18	0	50	Mexico	81	64	901
Finland	92	0	0	Total	171,073	206,945	189,452
France	517	40	33				
Germany	51	125	26	Africa and Asia:			
Netherlands	3,926	646	1,298	Bahrain	0	16	0
Sweden	381	0	0	China, Peoples Republic of	0	48	144
United Kingdom	702	466	730	Ghana	0	343	0
Total EU	5,974	1,353	2,138	Hong Kong	97,028	128,569	124,417
				India	0	0	5
Western and Eastern Europe:				Indonesia	1,164	1,718	2,265
Iceland	64	47	61	Japan	166,214	161,786	158,170
Russian Federation	85	240	1,386	Korea, Republic of	1,070	1,151	1,637
Switzerland	68	7	0	Malaysia	11,131	11,801	12,236
Total	217	294	1,447	Philippines	2,283	4,544	7,587
				Saudi Arabia	0	20	0
South and Central America:				Sri Lanka	77	116	140
Columbia	17	0	0	Taiwan	16,600	11,675	21,186
Ecuador	0	12	474	Thailand	14	205	16
Guatemala	0	0	64	United Arab Emirates	0	16	0
Panama	0	19	0	Vietnam	0	0	83
Venezuela	0	19	0	Total	310,016	336,945	343,562
Total	17	50	538				
				Oceania:			
Caribbean:				Australia	4,421	5,723	6,265
Bahamas, The	0	0	7	French Pacific Islands	124	114	52
Barbados	93	0	19	New Zealand	2,970	4,682	4,352
Bermuda	0	27	0	Other Pacific Islands	38	37	9
Dominican Republic	87	27	0	Total	7,553	10,566	10,679
French West Indies	11	24	0				
Leeward-Windward Islands	36	0	0	World Total	495,214	556,348	548,041
Netherlands Antilles	119	119	199				
Trinidad and Tobago	18	0	0				
Total	364	195	225				

¹ Includes temple oranges.
FAS, Horticultural and Tropical Products Division, (202) 720-3423. Compiled from reports of the U.S. Department of Commerce.

Table 275.—Fresh citrus fruits: Foreign trade, United States, 1984–93

Year ¹	Oranges		Grapefruit		Lemons		Limes		Tangerines	
	Imports	Domestic exports	Imports	Domestic exports	Imports	Domestic exports	Imports	Domestic exports	Imports	Domestic exports
	<i>Metric tons</i>	<i>Metric tons</i>	<i>Metric tons</i>	<i>Metric tons</i>	<i>Metric tons</i>	<i>Metric tons</i>	<i>Metric tons</i>	<i>Metric tons</i>	<i>Metric tons</i>	<i>Metric tons</i>
1984	24,034	395,642	2,312	198,624	6,846	146,997	30,991	2,328	6,895	15,773
1985	28,097	401,008	2,625	269,225	12,872	139,910	28,101	2,357	9,144	8,559
1986	19,746	399,979	1,769	355,858	8,319	145,968	29,522	4,547	13,706	15,778
1987	22,183	335,091	5,084	462,138	6,800	140,839	40,843	2,839	14,954	14,712
1988	8,532	364,736	3,856	481,017	5,578	139,573	43,254	2,814	17,334	19,975
1989	12,082	490,088	4,525	301,182	10,518	132,675	44,077	4,055	11,907	6,118
1990	61,685	251,938	8,100	458,874	14,501	119,385	65,848	4,854	11,258	8,363
1991	16,136	479,110	10,018	446,560	4,607	131,721	84,805	4,578	12,365	11,941
1992	10,174	562,598	12,509	444,776	9,834	127,336	112,125	2,770	12,396	9,559
1993	16,227	543,320	14,549	461,579	8,429	124,414	77,267	2,579	10,401	11,914

¹ Year beginning October for all commodities.
ERS, Field and Specialty Crops Branch, (202) 219-0840.

Table 276.—Dates: Production, marketing year average price per ton, and value, California, 1986–95

Year	Production	Price ¹	Value	Year	Production	Price ¹	Value
	<i>Tons</i>	<i>Dollars</i>	<i>1,000 dollars</i>		<i>Tons</i>	<i>Dollars</i>	<i>1,000 dollars</i>
1986	17,800	828	14,738	1991	22,000	970	21,340
1987	19,400	872	16,917	1992	21,000	1,060	22,260
1988	22,000	896	19,712	1993	29,000	790	22,910
1989	22,000	1,040	22,880	1994	23,000	750	17,250
1990	24,000	820	19,680	1995 ²	22,000	1,110	24,420

¹Quantities processed are priced at the equivalent processing plant door level. ²Preliminary.
NASS, Crops Branch, (202) 720-2127.

Table 277.—Dates: Foreign trade, United States, 1984–93

Year beginning October	Imports	Year beginning October	Imports
	<i>Metric tons</i>		<i>Metric tons</i>
1984	14,601	1989	9,314
1985	2,833	1990	5,539
1986	3,059	1991	7,072
1987	5,593	1992	5,461
1988	10,046	1993	5,277

ERS, Field and Specialty Crops Branch, (202) 219-0840.

Table 278.—Cranberries: Area, yield, production, season average price per barrel, value and quantities processed, United States, 1986–95 ¹

Year	Area harvested	Yield per acre ²	Total production ³	Utilized production	Price ⁴	Value	Quantities processed ⁵
	<i>Acres</i>	<i>Barrels ⁶</i>	<i>Barrels ⁶</i>	<i>Barrels ⁶</i>	<i>Dollars</i>	<i>1,000 dollars</i>	<i>Barrels ⁶</i>
1986	26,300	140.3	3,690,000	3,690,000	44.70	165,086	3,201,400
1987	26,700	127.0	3,391,000	3,391,000	44.50	150,906	3,030,000
1988	27,300	149.5	4,080,000	4,080,000	45.70	186,340	3,738,800
1989	27,600	135.8	3,747,000	3,747,000	44.00	164,720	3,407,500
1990	27,800	122.1	3,393,000	3,393,000	46.10	156,455	3,154,300
1991	28,400	148.6	4,219,000	4,219,000	49.00	206,616	3,912,000
1992	29,200	142.5	4,160,000	4,160,000	51.60	214,767	3,881,000
1993	29,400	133.3	3,919,000	3,919,000	50.20	196,820	3,619,000
1994	31,100	150.5	4,682,000	4,682,000	49.30	230,695	4,415,000
1995 ⁷	31,700	129.9	4,117,000	4,117,000	N.A.	N.A.	N.A.

¹Estimates relate to MA, NJ, OR, WA, and WI. ²Derived from total production. ³Differences between utilized and total production are quantities unharvested for economic reasons or excess cullage and/or set-aside production under provisions of the Cranberry Marketing Order. ⁴Average price of utilized production. Equivalent returns at first delivery point, screened basis of utilized production. ⁵Mainly for canning. ⁶Barrels of 100 pounds. ⁷Preliminary. N.A. = not available.

NASS, Crops Branch, (202) 720-2127.

Table 279.—Cranberries: Area, yield, production, and season average price per barrel, by States, 1993–95

State	Area harvested			Yield per acre			Total production			Price ² for crop of		
	1993	1994	1995 ¹	1993	1994	1995 ¹	1993	1994	1995 ¹	1993	1994	1995 ¹
	<i>Acres</i>	<i>Acres</i>	<i>Acres</i>	<i>Bbl.³</i>	<i>Bbl.³</i>	<i>Bbl.³</i>	<i>Bbl.³</i>	<i>Bbl.³</i>	<i>Bbl.³</i>	<i>Dol-lars</i>	<i>Dol-lars</i>	<i>Dollars</i>
MA .	13,100	13,500	13,500	143.5	144.6	118.5	1,880,000	1,952,000	1,600,000	51.80	50.60	(⁴)
NJ ..	3,400	3,300	3,500	113.5	169.1	127.1	386,000	558,000	445,000	47.20	46.60	(⁴)
OR .	1,500	1,700	1,700	104.0	194.1	100.0	156,000	330,000	170,000	46.50	46.80	(⁴)
WA .	1,400	1,500	1,500	97.9	134.7	118.0	137,000	202,000	177,000	46.50	46.30	(⁴)
WI ..	10,000	11,100	11,500	136.0	147.7	150.0	1,360,000	1,640,000	1,725,000	49.70	49.50	(⁴)
US ..	29,400	31,100	31,700	133.3	150.5	129.9	3,919,000	4,682,000	4,117,000	50.20	49.30	(⁴)

¹ Preliminary. ² Average price of utilized production. Equivalent returns at first delivery point, screened basis of utilized production. ³ Barrels of 100 pounds. ⁴ Not available.

NASS, Crops Branch, (202) 720-2127.

Table 280.—Figs: Production, marketing year average price per ton, and value, California, 1986–95

Year	Dried (dry basis)				Total		
	Production			Price	Production (fresh basis) ¹	Price ²	Value ²
	Total	Standard	Substandard				
	<i>Tons</i>	<i>1,000 tons</i>	<i>Tons</i>	<i>Dollars</i>	<i>Tons</i>	<i>Dollars</i>	<i>1,000 dollars</i>
1986	16,200	12,450	3,750	801.00	50,000	283.00	14,173
1987	16,850	14,100	2,750	952.00	52,300	331.00	17,336
1988	18,000	15,850	2,150	1,010.00	55,500	352.00	19,530
1989	15,500	13,800	1,700	1,120.00	48,000	379.00	18,198
1990	16,000	13,600	2,400	961.00	49,600	350.00	17,370
1991	14,600	13,200	1,400	1,040.00	45,100	369.00	16,626
1992	15,200	13,900	1,300	1,180.00	46,900	405.00	18,985
1993	19,300	17,100	2,200	1,100.00	60,700	401.00	24,341
1994	18,200	17,000	1,200	1,360.00	56,700	418.00	23,713
1995	16,000	14,600	1,400	1,060.00	50,000	367.00	18,357

¹ Dried figs converted to fresh basis at ratio of 3 pounds fresh to 1 pound dried. ² Quantities processed are priced at the equivalent processing plant door level.

NASS, Crops Branch, (202) 720-2127.

Table 281.—Figs, dried: Foreign trade, United States, 1984–93

Year beginning October	Imports for consumption	Domestic exports	Year beginning October	Imports for consumption	Domestic exports
	<i>Metric tons</i>	<i>Metric tons</i>		<i>Metric tons</i>	<i>Metric tons</i>
1984	3,132	1,293	1989	5,437	2,243
1985	3,367	735	1990	5,403	2,874
1986	2,740	612	1991	8,387	2,931
1987	2,941	773	1992	8,239	2,623
1988	4,856	1,404	1993	11,000	3,035

ERS, Field and Specialty Crops Branch, (202) 219-0840.

Table 282.—Grapes: Production, value, and raisin production, United States, 1986–95

Year	Grapes				Raisins, production (California) ³
	Production (fresh basis)		Market year average price per ton ²	Value	
	Total ¹	Utilized ¹			
	1,000 tons	1,000 tons	Dollars	1,000 dollars	1,000 tons
1986 ⁴	5,228	5,227	226.00	1,183,242	279
1987 ⁴	5,267	5,253	259.00	1,358,728	358
1988 ⁴	6,034	6,032	266.00	1,607,098	367
1989 ⁴	5,931	5,930	314.00	1,862,888	433
1990 ⁴	5,660	5,660	295.00	1,670,468	396
1991 ⁴	5,556	5,555	312.00	1,735,267	348
1992 ⁴	6,052	6,033	306.00	1,848,591	392
1993 ⁴	6,023	6,015	333.00	2,005,476	388
1994 ⁴	5,874	5,869	321.00	1,883,421	422
1995 ⁵	5,753	5,744	317.00	1,822,339	306

¹ Numbers rounded. ² Fresh fruit prices are equivalent packinghouse-door returns for California and Washington and the average price as sold for other States. Quantities processed are priced at the equivalent processing plant door level. ³ Dried basis; 1 ton of raisins equivalent to about 4–5 tons of fresh grapes. Excludes table varieties dried. ⁴ Total production includes utilized production plus production not harvested: 1986—600 tons fresh equivalent; 1987—13,500 tons fresh equivalent; 1988—1,600 tons fresh equivalent; 1989—700 tons fresh equivalent; 1990—120 tons fresh equivalent; 1991—630 tons fresh equivalent; 1992—19,500 tons fresh equivalent; 1993—8,600 tons fresh equivalent; 1994—4,400 tons fresh equivalent; 1995—9,550 tons fresh equivalent. ⁵ Preliminary.

NASS, Crops Branch, (202) 720–2127.

Table 283.—Grapes: Production and marketing year average price per ton, by States, 1993–95

State	Total production			Utilized production			Price ² for crop of—		
	1993	1994	1995 ¹	1993	1994	1995 ¹	1993	1994	1995 ¹
	Tons	Tons	Tons	Tons	Tons	Tons	Dollars	Dollars	Dollars
AZ	24,000	26,000	26,000	24,000	26,000	26,000	753.00	940.00	897.00
AR	8,000	6,000	8,000	5,500	5,500	7,000	493.00	476.00	634.00
CA:									
All varieties	5,383,000	5,256,000	5,065,000	5,383,000	5,256,000	5,065,000	340.00	326.00	323.00
Wine varieties	2,397,000	2,265,000	2,200,000	2,397,000	2,265,000	2,200,000	361.00	378.00	367.00
Table varieties	632,000	602,000	645,000	632,000	602,000	645,000	574.00	515.00	521.00
Raisin varieties ³	2,354,000	2,389,000	2,220,000	2,354,000	2,389,000	2,220,000	255.00	229.00	222.00
GA	3,600	3,200	3,200	3,600	2,700	3,000	843.00	919.00	1,110.00
MI	55,000	65,000	70,000	49,000	65,000	64,000	253.00	238.00	237.00
MO	2,350	2,600	2,300	2,350	2,600	2,300	376.00	487.00	469.00
NY	118,000	190,000	165,000	118,000	187,000	163,000	225.00	213.00	222.00
NC	1,500	1,500	1,300	1,500	1,400	1,300	709.00	729.00	782.00
OH	6,800	7,000	9,200	6,800	6,800	8,900	251.00	240.00	228.00
OR	12,300	10,800	14,000	12,300	10,800	14,000	800.00	845.00	960.00
PA	54,000	80,000	63,000	54,000	80,000	63,000	210.00	182.00	171.00
SC	600	500	300	500	400	250	1,420.00	1,240.00	1,190.00
WA	354,000	225,000	326,000	354,000	225,000	326,000	254.00	256.00	226.00
US	6,023,150	5,873,600	5,753,300	6,014,550	5,869,200	5,743,750	333.00	321.00	317.00

¹ Preliminary. ² Fresh fruit prices are equivalent packinghouse-door returns for CA and WA, and the average price as sold for other States. Quantities processed are priced at the equivalent processing plant door level. ³ Fresh equivalent of dried and not dried.

NASS, Crops Branch, (202) 720–2127.

Table 284.—Grapes: Production and utilization, United States, 1986–95

Crop of—	Total production ¹	Utilized production	Utilization of quantities sold				
			Fresh	Processed (fresh basis)			
				Canned	Dried	Crushed for wine	Crushed for juice, etc. ²
<i>Tons</i>	<i>Tons</i>	<i>Tons</i>	<i>Tons</i>	<i>Tons</i>	<i>Tons</i>	<i>Tons</i>	
1986	5,227,900	5,227,300	779,420	40,000	1,188,500	2,909,020	310,360
1987	5,266,950	5,253,450	716,220	40,000	1,439,000	2,647,010	411,220
1988	6,033,700	6,032,100	831,320	40,000	1,827,000	2,982,110	351,670
1989	5,930,850	5,930,050	787,230	40,000	1,864,000	2,850,050	388,770
1990	5,659,900	5,659,780	848,980	40,000	1,747,100	2,697,980	325,720
1991	5,555,900	5,555,270	800,400	41,000	1,582,500	2,717,820	413,550
1992	6,052,050	6,032,550	769,070	46,000	1,575,800	3,237,210	404,470
1993	6,023,150	6,014,550	800,600	45,000	1,677,200	3,025,580	466,170
1994	5,873,600	5,869,200	808,650	38,000	1,906,300	2,695,430	420,820
1995 ³	5,753,300	5,743,750	827,900	35,000	1,535,500	2,846,740	498,610

¹Total production includes utilized production plus production not harvested: 1986—600 tons fresh equivalent; 1987—13,500 tons fresh equivalent; 1988—1,600 tons fresh equivalent; 1989—700 tons fresh equivalent; 1990—120 tons fresh equivalent; 1991—630 tons fresh equivalent; 1992—19,500 tons fresh equivalent; 1993—8,600 tons fresh equivalent; 1994—4,400 tons fresh equivalent; 1995—9,550 tons fresh equivalent. ²Mostly juice, but includes some quantities used for jam, jelly, etc. ³Preliminary.

NASS, Crops Branch, (202) 720-2127.

Table 285.—Grapes: Production and utilization, by States, crop of 1995 (preliminary)

State	Total production	Utilized production	Utilization				
			Fresh	Processed (fresh basis)			
				Canned	Dried ¹	Crushed for—	
<i>Tons</i>	<i>Tons</i>	<i>Tons</i>	<i>Tons</i>	<i>Tons</i>	<i>Tons</i>	<i>Tons</i>	
AZ	26,000	26,000	19,200	6,500
AR	8,000	7,000	4,500
CA:							
All varieties	5,065,000	5,065,000	796,000	35,000	1,529,000	2,705,000
Wine varieties	2,200,000	2,200,000	45,000	14,000	2,155,000
Table varieties	645,000	645,000	481,000	150,000
Raisin varieties	2,220,000	2,220,000	270,000	35,000	1,515,000	400,000
GA	3,200	3,000	1,800	1,180
MI	70,000	64,000	500	2,000	61,500
MO	2,300	2,300	150	2,070
NY	165,000	163,000	4,000	51,000	108,000
NC	1,300	1,300
OH	9,200	8,900	200	1,300	7,400
OR	14,000	14,000	14,000
PA	63,000	63,000	1,000	6,800	55,200
SC	300	250
WA	326,000	326,000	60,000	266,000
Other States	550	3,390	510
US	5,753,300	5,743,750	827,900	35,000	1,535,500	2,846,740	498,610

¹Equivalent raisins produced (dried basis): 307,100 tons. ²Mostly juice, but includes some quantities used for jam, jelly, etc.

NASS, Crops Branch, (202) 720-2127.

Table 286.—Raisins and currants: United States exports by country of destination, 1992/93–1994/95

Country of destination	Year beginning September			Country of destination	Year beginning September		
	1992/93	1993/94	1994/95		1992/93	1993/94	1994/95
	<i>Metric tons</i>	<i>Metric tons</i>	<i>Metric tons</i>		<i>Metric tons</i>	<i>Metric tons</i>	<i>Metric tons</i>
Europe:				Bermuda and Caribbean:			
Belgium and Luxembourg	3,949	2,807	2,879	Bahamas	17	41	49
Denmark	6,827	5,582	5,174	Bermuda	7	42	36
Finland	3,176	3,561	2,027	Dominican Republic	311	280	290
France	189	271	202	Haiti	0	0	16
Germany, Fed. Rep. of ..	13,366	11,144	8,336	Jamaica	5	21	29
Ireland	415	154	236	Netherlands Antilles	37	59	79
Italy	64	113	19	Trinidad and Tobago	112	43	78
Netherlands	4,627	3,367	3,641	Other countries	0	3	10
Norway	3,173	2,510	2,356	Total	489	489	587
Spain	894	492	712	Other countries:			
Sweden	6,141	4,491	5,350	Australia	179	81	142
Switzerland	341	317	227	Canada	10,779	11,762	10,868
United Kingdom	25,143	26,351	27,444	Hong Kong	2,984	3,879	4,234
Other countries	393	200	266	Israel	508	481	909
Total	68,698	61,360	58,869	Japan	23,412	25,184	24,221
Latin America:				Korea, Rep. of	3,298	3,155	3,561
Brazil	311	783	944	Malaysia	2,650	2,434	2,076
Colombia	134	355	179	New Zealand	1,801	1,333	1,593
Costa Rica	102	98	46	Philippines	458	109	193
Ecuador	24	21	33	Saudi Arabia	623	857	554
El Salvador	14	24	12	Singapore	1,999	2,752	3,159
Guatemala	81	29	22	Taiwan	3,081	3,225	3,594
Honduras	69	33	32	Thailand	85	174	73
Mexico	178	3,026	487	United Arab Emirates	294	400	93
Panama	494	491	377	Other countries	398	1,063	1,775
Venezuela	998	576	446	Total	52,549	56,889	57,045
Other countries	97	90	277	Grand total	124,238	124,264	119,356
Total	2,502	5,526	2,855				

FAS, Horticultural and Tropical Products Division, (202) 720-3423. Compiled from reports of the U.S. Department of Commerce.

Table 287.—Grapes and raisins: Foreign trade, United States 1984–93

Year beginning October	Grapes		Raisin ¹		Year beginning October	Grapes		Raisin ¹	
	Imports, fresh	Domestic exports, fresh	Imports for consumption	Domestic exports		Imports, fresh	Domestic exports, fresh	Imports for consumption	Domestic exports
	<i>Metric tons</i>	<i>Metric tons</i>	<i>Metric tons</i>	<i>Metric tons</i>		<i>Metric tons</i>	<i>Metric tons</i>	<i>Metric tons</i>	<i>Metric tons</i>
1984	194,068	88,135	675	65,728	1989	368,236	173,706	10,414	114,727
1985	202,592	102,859	4,451	82,093	1990	337,741	190,427	11,810	148,180
1986	247,846	114,060	6,954	92,916	1991	310,142	218,374	7,667	140,257
1987	307,459	116,720	9,508	104,215	1992	325,136	184,779	8,048	131,245
1988	280,902	136,246	11,443	102,894	1993	311,027	215,505	6,994	132,438

¹ Raisins converted to sweatbox or production basis by multiplying by 1.08.
ERS, Field and Specialty Crops Branch, (202) 219-0840.

Table 288.—Nectarines: Production, utilization, and value, California, 1986–95

Crop of—	Production	Utilization		Marketing year average price per ton ²	Value
		Fresh ¹	Processed (fresh basis)		
	<i>Tons</i>	<i>Tons</i>	<i>Tons</i>	<i>Dollars</i>	<i>1,000 dollars</i>
1986	172,000	170,000	2,000	440.00	75,720
1987	191,000	190,500	500	343.00	65,545
1988	217,000	216,000	1,000	394.00	85,593
1989	220,000	219,000	1,000	398.00	87,645
1990	232,000	229,500	2,500	474.00	109,999
1991	215,000	211,000	4,000	402.00	86,457
1992	236,000	233,000	3,000	312.00	73,710
1993	205,000	201,000	4,000	500.00	102,421
1994	242,000	238,000	4,000	282.00	68,168
1995 ³	176,000	170,000	6,000	534.00	93,990

¹ Includes "Home use." ² Processing fruit prices are equivalent returns at processing plant door. ³ Preliminary.
NASS, Crops Branch, (202) 720-2127.

Table 289.—Olives: Production, value, and utilization, California, 1986–95

Year	Production	Marketing year average price per ton	Value	Utilization		
				Crushed for oil	Canned	Other
	<i>Tons</i>	<i>Dollars</i>	<i>1,000 dollars</i>	<i>Tons</i>	<i>Tons</i>	<i>Tons</i>
1986	111,500	587.00	65,407	6,000	85,000	20,000
1987	67,500	608.00	41,053	3,000	55,000	9,000
1988	87,500	518.00	45,316	3,000	70,000	14,000
1989	123,000	467.00	57,458	5,500	94,000	23,000
1990	131,500	423.00	55,663	5,000	88,000	38,000
1991	65,000	559.00	36,306	1,800	53,700	9,000
1992	165,000	549.00	90,561	5,700	121,000	37,800
1993	122,000	467.00	56,991	5,300	93,000	23,200
1994	84,000	463.00	38,911	4,400	66,500	12,600
1995 ¹	77,500	642.00	49,761	4,000	58,500	14,500

¹ Preliminary.
NASS, Crops Branch, (202) 720-2127.

Table 290.—Olives and olive oil: Foreign trade, United States, 1984–93

Year beginning October	Imports				Year beginning October	Imports			
	Olives		Olive oil			Olives		Olive oil	
	In brine	Dried	Edible	Inedible		In brine	Dried	Edible	Inedible
	<i>Metric tons</i>	<i>Metric tons</i>	<i>Metric tons</i>	<i>Metric tons</i>		<i>Metric tons</i>	<i>Metric tons</i>	<i>Metric tons</i>	<i>Metric tons</i>
1984	59,259	535	41,683	39	1989	64,467	700	91,142	0
1985	63,592	662	48,922	51	1990	60,835	487	99,698	0
1986	75,167	701	61,866	89	1991	61,924	682	106,954	0
1987	72,160	696	68,101	5	1992	62,214	606	123,234	0
1988	61,748	413	1993	64,615	462	123,934	0

ERS, Field and Specialty Crops Branch, (202) 219-0840.

Table 291.—Peaches: Production and value, United States, 1986–95

Year	Total production	Utilized production	Marketing year average price ¹	Value
	<i>Million pounds</i>	<i>Million pounds</i>	<i>Cents per pound</i>	<i>1,000 dollars</i>
1986	2,306.6	2,218.1	14.0	310,805
1987	2,381.5	2,238.9	13.8	308,970
1988	2,622.1	2,456.6	15.6	383,687
1989	2,362.8	2,236.8	16.4	366,274
1990	2,242.2	2,148.6	17.4	373,651
1991	2,695.5	2,515.4	15.7	396,109
1992	2,671.9	2,492.7	15.2	379,749
1993	2,660.1	2,494.2	16.0	398,852
1994	2,513.5	2,358.5	13.3	314,699
1995 ²	2,348.3	2,237.6	18.4	412,607

¹Fresh fruit prices are equivalent packinghouse-door returns for CA and WA except equivalent returns for bulk fruit at the first delivery point for CA Clingstone, and the average price as sold for other States. Quantities processed are priced at the equivalent processing plant door level. ²Preliminary.
 NASS, Crops Branch, (202) 720-2127.

Table 292.—Peaches: Foreign trade, United States, 1984–93

Year beginning October	Domestic exports				
	Fresh	Canned	Canned, in fruit salad ²	Dried, in fruit salad ^{1,3}	Total, in terms of fresh ⁴
	<i>Metric tons</i>	<i>Metric tons</i>	<i>Metric tons</i>	<i>Metric tons</i>	<i>Metric tons</i>
1984	20,939	11,665	7,558	414	42,462
1985	25,288	15,457	7,210	460	50,511
1986	26,274	14,483	7,894	388	50,807
1987	38,906	19,831	9,475	287	69,806
1988	44,727	17,689	8,428	624	74,311
1989	57,508	13,951	9,083	646	84,728
1990	68,384	18,376	11,227	718	102,640
1991	71,416	19,308	13,428	704	108,063
1992	64,003	21,393	13,965	728	103,405
1993	83,309	18,171	10,402	831	116,499

¹Net processed weight. ²Canned peaches are 40 percent of total canned fruit for salad. ³Dried peaches are 21 percent of total dried fruit for salad. ⁴Dried fruit converted to unprocessed dry weight by dividing by 1.08. Unprocessed dry weight converted to terms of fresh fruit on the basis that 1 pound dried equals 6.0 pounds fresh. Canned peaches converted to terms of fresh on basis that 1 pound canned equals about 1 pound fresh.
 ERS, Field and Specialty Crops Branch, (202) 219-0840.

Table 293.—Peaches: Production and utilization, United States, 1986–95

Crop of—	Total production ¹	Utilized production	Utilization of quantities sold				
			Fresh ²	Processed (fresh basis)			
				Canned	Dried	Frozen	Other ³
	<i>Million pounds</i>	<i>Million pounds</i>	<i>Million pounds</i>	<i>Million pounds</i>	<i>Million pounds</i>	<i>Million pounds</i>	<i>Million pounds</i>
1986	2,306.6	2,218.1	1,091.0	926.9	32.5	136.3	31.4
1987	2,381.5	2,238.9	1,113.5	877.1	35.0	145.1	68.2
1988	2,622.1	2,456.6	1,231.4	986.0	41.2	131.9	66.1
1989	2,362.8	2,236.8	1,066.6	918.4	28.6	143.9	79.3
1990	2,242.2	2,148.6	942.7	960.9	27.1	168.2	49.7
1991	2,695.5	2,515.4	1,241.7	987.1	44.4	161.5	80.7
1992	2,671.9	2,492.7	1,110.2	1,096.0	40.4	164.3	81.2
1993	2,660.1	2,494.2	1,181.8	1,044.6	30.0	178.8	59.0
1994	2,513.5	2,358.5	1,043.4	1,044.5	27.0	157.8	85.8
1995 ⁴	2,348.3	2,237.6	1,140.5	821.5	28.0	150.9	96.7

¹Includes harvested not sold and unharvested production for California Clingstone peaches (tons): 1984, 1985, 1986, 1987, 1988, 1989, 1990—None. ²Includes "Home use." ³Used for jams, preserves, brandy, etc. Includes small quantities frozen for some years. ⁴Preliminary.
 NASS, Crops Branch, (202) 720-2127.

Table 294.—Peaches: Production and season average price per pound, 1993–95

State	Total production			Utilized production			Price ² for crop of—		
	1993	1994	1995 ¹	1993	1994	1995 ¹	1993	1994	1995 ¹
	Million pounds	Million pounds	Million pounds	Million pounds	Million pounds	Million pounds	Dollars	Dollars	Dollars
AL	14.0	17.0	22.0	13.0	16.0	21.0	.329	.235	.285
AR	24.0	8.0	20.0	22.0	8.0	18.0	.140	.245	.177
CA:									
Freestone	603.0	634.0	546.0	603.0	634.0	546.0	.149	.107	.178
CO	18.0	20.0	17.0	17.0	18.0	16.0	.311	.319	.496
CT	3.6	2.2	2.1	3.5	2.2	2.1	.520	.500	.600
DE	4.0	2.6	2.0	3.5	2.6	2.0	.240	.365	.386
GA	150.0	175.0	160.0	143.0	150.0	146.0	.225	.184	.203
ID	7.0	4.0	4.0	6.6	3.6	4.0	.242	.351	.345
IL	16.0	4.8	13.0	15.0	4.8	12.0	.299	.320	.339
IN	8.0	5.0	7.8	4.9	.353361
KS	0.5	.5	1.0	0.3	.4	.8	.380	.260	.410
KY	6.0	6.0	5.6	5.3	.300322
LA	3.5	4.0	5.0	3.3	3.8	4.8	.480	.440	.546
MD	10.0	2.8	12.0	9.5	2.8	11.3	.255	.392	.308
MA	1.7	1.0	1.2	1.6	.9	1.2	.520	.500	.700
MI	57.0	15.0	60.0	54.0	15.0	60.0	.190	.227	.210
MO	7.5	5.0	9.0	7.5	5.0	9.0	.240	.320	.315
NJ	90.0	75.0	70.0	85.0	69.0	68.0	.298	.329	.385
NY	9.0	7.0	11.5	9.0	7.0	11.0	.296	.251	.207
NC	35.0	33.0	35.0	30.0	32.0	32.0	.201	.224	.220
OH	6.9	5.8	6.9	5.8	.355421
OK	20.0	25.0	30.0	14.5	20.8	28.5	.352	.295	.370
OR	14.0	15.5	12.0	11.0	14.5	12.0	.241	.298	.297
PA	100.0	90.0	95.0	90.0	.210274
SC	220.0	250.0	215.0	165.0	190.0	190.0	.167	.188	.180
TN	10.4	1.7	10.4	7.6	1.6	5.2	.380	.404	.354
TX	25.0	20.0	24.0	22.6	14.9	18.0	.360	.390	.360
UT	6.0	7.4	6.3	5.8	6.6	6.2	.240	.230	.250
VA	28.0	12.0	26.0	25.0	11.0	25.0	.160	.226	.230
WA	47.0	41.0	44.0	47.0	41.0	44.0	.216	.218	.323
WV	18.0	18.0	16.6	16.5	.147224
Total above	1,563.1	1,383.5	1,483.3	1,457.2	1,275.5	1,416.6	.196	.170	.228
CA:									
Clingstone ³	1,097.0	1,130.0	865.0	1,037.0	1,083.0	821.0	.109	.090	.11
US	2,660.1	2,513.5	2,348.3	2,494.2	2,358.5	2,237.6	.160	.133	.184

¹ Preliminary. ² Fresh fruit prices are equivalent packinghouse-door returns for CA and WA except equivalent returns for bulk fruit at the first delivery point for CA Clingstone, and the average price as sold for other States. Quantities processed are priced at the equivalent processing plant door level. ³ Mainly for canning. Total production includes harvested not sold and unharvested production as follows (million pounds): 70.0 in 1987, 74.0 in 1988, and 65.0 in 1989.

NASS, Crops Branch, (202) 720-2127.

Table 295.—Peaches: Production and utilization, by States, crop of 1995 (preliminary)

State	Total production	Utilized production	Utilization				
			Fresh ¹	Processed (fresh basis)			
				Canned	Dried	Frozen	Other ²
	Million pounds	Million pounds	Million pounds	Million pounds	Million pounds	Million pounds	Million pounds
CA, all ³	1,411.0	1,367.0	785.0
Clingstone ³	865.0	821.0	763.0
Freestone	546.0	546.0	322.6	22.0	28.0	127.4
GA	160.0	146.0
NJ	70.0	68.0
PA	90.0	90.0
SC	215.0	190.0	170.0
WA	44.0	44.0
Other States	358.3	332.6	647.9	36.5	23.5	96.7
US	2348.3	2,237.6	1,140.5	821.5	28.0	150.9	96.7

¹ Includes "Home use." ² Used for jams, preserves, brandy, etc. ³ Difference between total and utilized production is harvested not sold and unharvested production.

NASS, Crops Branch, (202) 720-2127.

Table 296.—Peaches, canned: United States exports by country of destination, 1992/93–1994/95

Country of destination	Year beginning June			Country of destination	Year beginning June		
	1992/93	1993/94	1994/95		1992/93	1993/94	1994/95
	Metric tons	Metric tons	Metric tons		Metric tons	Metric tons	Metric tons
Europe:				Bermuda and Caribbean:			
Belgium and Luxembourg .	0	0	0	Bahamas	43	46	22
Denmark	0	0	0	Bermuda	23	6	14
Finland	45	31	6	Dominican Republic	45	34	10
Germany, Fed. Rep. of	156	31	74	Netherlands Antilles	22	2	9
Greece	0	0	167	Other countries	21	8	8
Netherlands	265	33	42	Total	154	96	63
Norway	74	42	35				
Sweden	44	15	0	Other countries:			
Switzerland	0	0	0	Canada	2,691	2,809	3,908
United Kingdom	18	36	99	Hong Kong	1,467	1,768	943
Other countries	362	40	96	Taiwan	2,460	1,719	1,259
Total	964	228	519	Japan	5,812	5,674	4,595
				Kuwait	263	449	40
Latin America:				Saudi Arabia	532	460	137
Colombia	58	98	85	Singapore	754	1,194	1,164
Panama	266	325	202	Other countries	3,361	3,277	4,532
Other countries	1034	1,212	1,322	Total	17,340	17,350	16,578
Total	1,358	1,635	1,609	Grand total	19,815	19,309	18,769

FAS, Horticultural and Tropical Products Division, (202) 720-3423. Compiled from reports of the U.S. Department of Commerce.

Table 297.—Pears: Production and value, United States 1986–95

Year	Total production	Utilized production	Marketing year average price ¹	Value	Year	Total production	Utilized production	Marketing year average price ¹	Value
	Tons	Tons	Dollars per ton	1,000 dollars		Tons	Tons	Dollars per ton	1,000 dollars
1986	767,150	761,150	267.00	203,113	1991	903,000	902,850	303.00	273,666
1987	938,450	936,100	198.00	185,377	1992	923,200	921,350	295.00	272,205
1988	860,400	859,950	274.00	235,271	1993	948,250	946,900	245.00	232,010
1989	915,800	915,450	277.00	253,262	1994	1,046,150	1,045,550	223.00	233,107
1990	962,150	962,000	279.00	268,857	1995 ²	944,250	943,550	287.00	270,424

¹ Fresh fruit prices are equivalent packinghouse-door returns for CA, OR, and WA, and the average price as sold for other States. Quantities processed are priced at the equivalent processing plant door level. ² Preliminary. NASS, Crops Branch, (202) 720-2127.

Table 298.—Pears: Production and season average price per ton, by States, 1993–95

Variety and State	Total production			Utilized production			Price ² for crop—		
	1993	1994	1995 ¹	1993	1994	1995 ¹	1993	1994	1995 ¹
	Tons	Tons	Tons	Tons	Tons	Tons	Dollars	Dollars	Dollars
CA, all	308,000	363,000	265,000	308,000	363,000	265,000	256.00	191.00	239.00
Bartlett	288,000	333,000	245,000	288,000	333,000	245,000	237.00	183.00	214.00
Other	20,000	30,000	20,000	20,000	30,000	20,000	528.00	281.00	537.00
CO	5,000	4,200	2,900	4,800	4,100	2,800	348.00	268.00	357.00
CT	1,250	1,250	950	1,200	1,250	950	600.00	580.00	700.00
MI	5,500	4,500	5,500	5,500	4,500	5,000	225.00	279.00	280.00
NY	15,000	16,000	14,500	14,500	16,000	14,500	261.00	303.00	372.00
OR, all	223,000	258,000	230,000	223,000	258,000	230,000	222.00	217.00	328.00
Bartlett	63,000	83,000	70,000	63,000	83,000	70,000	260.00	213.00	267.00
Other	160,000	175,000	160,000	160,000	175,000	160,000	207.00	219.00	355.00
PA	6,000	6,000	6,300	5,500	5,700	6,300	350.00	386.00	364.00
UT	1,500	1,200	1,100	1,400	1,000	1,000	400.00	360.00	460.00
WA, all	383,000	392,000	418,000	383,000	392,000	418,000	245.00	248.00	288.00
Bartlett	163,000	174,000	178,000	163,000	174,000	178,000	269.00	226.00	230.00
Other	220,000	218,000	240,000	220,000	218,000	240,000	227.00	266.00	331.00
US	948,250	1,046,150	944,250	946,900	1,045,550	943,550	245.00	223.00	287.00

¹ Preliminary. ² Fresh fruit prices are equivalent packinghouse-door returns for CA, OR, and WA, and the average price as sold for other States. Quantities processed are priced at the equivalent processing plant door level. NASS, Crops Branch, (202) 720-2127.

Table 299.—Pears, fresh (dessert and cooking): Production in specified countries, 1992/93–1994/95¹

Continent and country	1992/ 93	1993/ 94	1994/ 95 ²	Continent and country	1992/ 93	1993/ 94	1994/ 95 ²
	<i>1,000 metric tons</i>	<i>1,000 metric tons</i>	<i>1,000 metric tons</i>		<i>1,000 metric tons</i>	<i>1,000 metric tons</i>	<i>1,000 metric tons</i>
North America:				Other Europe:			
Canada	19.7	18.1	19	Norway	4.7	2.9	3.2
Mexico	32	39.5	30	Turkey	403	420	410
United States	840.1	860.2	949.1	Total	407.7	422.9	413.2
Total	891.8	917.8	998.1	Total Europe	3590.1	2944	3150.6
South America:				Africa:			
Argentina	370	410	400	South Africa	235	252.8	253.5
Chile	210	232	240	Total	235	252.8	253.5
Total	580	642	640	Asia:			
European Union:				Japan	434.5	396.3	431.1
Austria ²	35.9	44	37.6	Total	434.5	396.3	431.1
Belgium/Luxembourg	112	147	155.1	Oceania:			
Denmark	8	8.2	7.8	Australia	187	175	142
France	393.6	251.1	343.6	New Zealand	17.6	19.4	19.9
Germany	578.9	414	419	Total	204.6	194.4	161.9
Greece	88.1	81	73	Total specified countries	5936	5347.3	5635.2
Italy	1264	938	1022				
Netherlands	101	170	140				
Spain	601.5	459.4	542.9				
Sweden ²	9.4	8.6	5.8				
United Kingdom	25.9	43.8	28.2				
Total	3182.4	2521.1	2737.4				

¹ May include some cider varieties in countries not reporting separately. ² Austria and Sweden now members of the European Union.

FAS, Horticultural and Tropical Products Division, (202) 720-3423. Prepared or estimated on the basis of official statistics of foreign governments, other foreign source materials, reports of U.S. Agricultural Counselors, Attachés, and Foreign Service Officers, results of office research, and related information.

Table 300.—Pears: Foreign trade, United States, 1984–93

Year beginning October	Imports for consumption, fresh	Domestic exports				
		Fresh ¹	Canned	Dried, in fruit salad ^{1,2}	Canned, in fruit salad ³	Total, in terms of fresh fruit ⁴
	<i>Metric tons</i>	<i>Metric tons</i>	<i>Metric tons</i>	<i>Metric tons</i>	<i>Metric tons</i>	<i>Metric tons</i>
1984	18,604	25,914	1,075	329	6,614	35,679
1985	25,663	30,516	1,024	365	6,308	40,151
1986	31,733	36,932	1,003	308	6,907	46,786
1987	32,499	44,882	1,140	228	8,291	55,752
1988	39,948	64,653	1,192	495	9,060	78,029
1989	41,292	93,715	2,155	513	7,948	107,153
1990	45,585	99,392	3,623	570	9,824	116,544
1991	59,133	119,376	6,165	559	11,750	140,819
1992	64,825	98,818	3,441	578	12,219	118,126
1993	65,283	137,046	3,076	660	9,102	153,389

¹ Net processed weight. ² Dried pears are 16% percent of total dried fruit for salad. ³ Canned pears are 35 percent of total canned fruit for salad. ⁴ Dried converted to unprocessed dry weight by dividing by 1.03. Unprocessed dry weight converted to terms of fresh on the basis that 1 pound dried equals about 6.5 pounds fresh. Canned converted to terms of fresh on basis that 1 pound of canned equals about 1 pound fresh.

ERS, Field and Specialty Crops Branch, (202) 219-0840.

Table 301.—Pears: Production and utilization, by States, crop of 1995 (preliminary)

State and variety	Total production	Utilized production	Utilization	
			Fresh ¹	Processed ²
	Tons	Tons	Tons	Tons
CA, all	265,000	265,000	(3)	(3)
Bartlett	245,000	245,000	62,000	183,000
Other	20,000	20,000	(3)	(3)
CO	2,900	2,800	(3)	(3)
CT	950	950	950	(3)
MI	5,500	5,000	(3)	(3)
NY	14,500	14,500	(3)	(3)
OR, all	230,000	230,000	(3)	(3)
Bartlett	70,000	70,000	29,000	41,000
Other	160,000	160,000	(3)	(3)
PA	6,300	6,300	(3)	(3)
UT	1,100	1,000	1,000	(3)
WA, all	418,000	418,000	(3)	(3)
Bartlett	178,000	178,000	56,000	122,000
Other	240,000	240,000	(3)	(3)
US	944,250	943,550	553,510	390,040

¹ Includes "Home use." ² Mostly canned, but includes small quantities dried, juiced, and other uses. ³ Data not published to avoid disclosure of individual operations, but included in U.S. totals.
 NASS, Crops Branch, (202) 720-2127.

Table 302.—Pears: Production and utilization, United States, 1986-95

Crop of—	Total production	Utilized production	Utilization of quantities sold—Fresh ¹
	Tons	Tons	Tons
1986	767,150	761,150	376,220
1987	938,450	936,100	454,850
1988	860,400	859,950	426,690
1989	915,800	915,450	453,220
1990	962,150	962,000	465,610
1991	903,000	902,850	462,000
1992	923,200	921,350	442,180
1993	948,250	946,900	507,800
1994	1,046,150	1,045,550	551,100
1995 ²	944,250	943,550	553,510

¹ Includes "Home use." ² Preliminary.
 NASS, Crops Branch, (202) 720-2127.

Table 303.—Papayas: Area, yield, production, utilization, marketing year average price, and value, Hawaii, 1986-95

Year	Area harvested	Utilized production	Utilization		Price per pound	Value
			Fresh	Processed		
	Acres	1,000 pounds	1,000 pounds	1,000 pounds	Cents	1,000 dollars
1986	2,355	61,000	50,100	10,900	18.2	11,123
1987	2,350	67,000	56,000	11,000	16.5	11,050
1988	2,300	69,000	57,000	12,000	17.9	12,354
1989	2,500	74,000	64,000	10,000	19.4	14,380
1990	2,400	68,500	58,000	10,500	21.6	14,805
1991	2,025	55,350	48,150	7,200	29.3	16,228
1992	2,415	71,300	55,800	15,500	20.2	14,415
1993	2,555	63,700	58,200	5,500	21.5	13,673
1994	2,200	62,000	56,200	5,800	22.3	13,831
1995 ¹	2,430	46,000	41,700	4,300	40.2	18,477

¹ Preliminary.
 NASS, Crops Branch, (202) 720-2127.

Table 304.—Plums; California: Production, value, and utilization, 1986–95

Season	Total production	Utilized production	Marketing year average price per ton ¹	Value
	<i>Tons</i>	<i>Tons</i>	<i>Dollars</i>	<i>1,000 dollars</i>
1986	152,000	152,000	657.00	99,857
1987	245,000	245,000	308.00	75,361
1988	216,000	216,000	475.00	102,661
1989	216,000	216,000	445.00	96,146
1990	223,000	223,000	603.00	134,412
1991	218,000	218,000	449.00	97,894
1992	250,000	250,000	252.00	63,033
1993	185,000	185,000	508.00	93,954
1994	247,000	247,000	321.00	79,358
1995 ²	124,000	124,000	950.00	117,849

¹Fresh fruit prices are equivalent returns at point of first sale. Processing fruit prices are equivalent returns at processing plant door. ²Preliminary.
NASS, Crops Branch, (202) 720-2127.

Table 305.—Prunes and plums: ¹ Production, value, and utilization, 4 States, 1986–95

Year	Total production	Utilized production	Marketing year average price per ton	Value	Utilization of quantities sold			
					Fresh ²	Processed (fresh basis)		
						Dried and other	Canned	Frozen
	<i>Tons</i>	<i>Tons</i>	<i>Dollars</i>	<i>1,000 dollars</i>	<i>Tons</i>	<i>Tons</i>	<i>Tons</i>	<i>Tons</i>
1986	48,100	44,100	260.00	11,448	20,400	9,200	13,200	1,300
1987	49,500	45,200	139.00	6,273	21,600	10,500	11,900	1,200
1988	53,000	49,600	181.00	8,976	24,000	9,400	14,400	1,800
1989	47,000	43,850	207.00	9,079	22,750	6,950	12,950	1,200
1990	47,800	43,200	195.00	8,444	24,300	8,400	9,600	900
1991	24,100	23,800	283.00	6,747	12,990	3,010	6,850	950
1992	44,600	44,400	192.00	8,524	21,060	9,440	13,400	500
1993	28,200	25,930	183.00	4,746	13,790	2,890	8,700	550
1994	38,100	32,100	168.00	5,401	13,550	6,800	10,650	1,100
1995 ³	23,000	21,980	318.00	6,981	12,600	2,730	5,450	1,200

¹ID, MI, OR, and WA. Mostly prunes; however, estimates include small quantities of plums in all States. ²Includes "Home use." ³Preliminary.
NASS, Crops Branch, (202) 720-2127.

Table 306.—Prunes and plums (fresh basis): Production and season average price per ton, by States, 1993–95

State	Total production			Utilized production			Price ² for crop of—		
	1993	1994	1995 ¹	1993	1994	1995 ¹	1993	1994	1995 ¹
		<i>Tons</i>	<i>Tons</i>	<i>Tons</i>	<i>Tons</i>	<i>Tons</i>	<i>Tons</i>	<i>Dollars</i>	<i>Dollars</i>
ID	7,000	4,500	3,000	5,230	3,500	2,980	162.00	387.00	625.00
MI	7,000	6,000	8,000	7,000	6,000	7,500	244.00	166.00	249.00
OR	4,500	19,000	5,500	4,000	14,000	5,000	166.00	127.00	241.00
WA	9,700	8,600	6,500	9,700	8,600	6,500	157.00	149.00	315.00
Total, 4 States	28,200	38,100	23,000	25,930	32,100	21,980	183.00	168.00	318.00

¹Preliminary. ²Fresh fruit prices are equivalent packinghouse-door returns for OR and WA, and the average price as sold for other States. Quantities processed are priced at the equivalent processing plant door level.
NASS, Crops Branch, (202) 720-2127.

Table 307.—Prunes(dried basis): Production, price and value, California, 1986–95¹

Season	Production ²		Marketing year average price per ton ³		Value <i>1,000 dollars</i>
	<i>Tons</i>		<i>Dollars</i>		
1986	99,000		819.00		81,081
1987	229,000		734.00		168,086
1988	151,000		782.00		118,082
1989	226,000		779.00		176,054
1990	147,000		873.00		128,331
1991	187,000		940.00		175,780
1992	184,000		1,030.00		189,520
1993	121,000		1,120.00		135,520
1994	193,000		1,090.00		210,370
1995 ⁴	178,000		N.A.		N.A.

¹The drying ratio is approximately 3 pounds of fresh fruit to 1 pound of dried fruit. ²Production all utilized. ³Equivalent returns at the processing plant door. ⁴Preliminary. N.A. = Not available.
NASS, Crops Branch, (202) 720-2127.

Table 308.—Prunes and plums: Utilization and marketing year average price per ton, by State, 1989–95¹

State and season	Quantity				Price ⁴			
	Fresh ²	Dried and other ³	Canned	Frozen	Fresh	Dried and other	Canned	Frozen
	<i>Tons</i>	<i>Tons</i>	<i>Tons</i>	<i>Tons</i>	<i>Dollars</i>	<i>Dollars</i>	<i>Dollars</i>	<i>Dollars</i>
MI:								
1989	5,500	(⁵)	6,750	(⁵)	255.00	(⁵)	117.00	(⁵)
1990	4,000	(⁵)	(⁵)	(⁵)	323.00	(⁵)	(⁵)	(⁵)
1991	3,500	(⁵)	3,400	(⁵)	337.00	(⁵)	282.00	(⁵)
1992	4,000	(⁵)	4,400	(⁵)	311.00	(⁵)	224.00	(⁵)
1993	2,000	(⁵)	4,300	(⁵)	410.00	(⁵)	180.00	(⁵)
1994	1,700	(⁵)	3,650	(⁵)	230.00	(⁵)	140.00	(⁵)
1995	3,700	(⁵)	2,950	(⁵)	340.00	(⁵)	160.00	(⁵)
WA:								
1989	9,700	(⁵)	(⁵)	(⁵)	198.00	(⁵)	(⁵)	(⁵)
1990	9,200	(⁵)	(⁵)	(⁵)	228.00	(⁵)	(⁵)	(⁵)
1991	4,800	(⁵)	(⁵)	(⁵)	332.00	(⁵)	(⁵)	(⁵)
1992	6,000	(⁵)	(⁵)	(⁵)	229.00	(⁵)	(⁵)	(⁵)
1993	4,600	(⁵)	(⁵)	(⁵)	189.00	(⁵)	(⁵)	(⁵)
1994	4,600	(⁵)	(⁵)	(⁵)	208.00	(⁵)	(⁵)	(⁵)
1995	4,500	(⁵)	(⁵)	(⁵)	392.00	(⁵)	(⁵)	(⁵)
Total 4 States:⁶								
1989	22,750	6,950	12,950	1,200	289.00	121.00	117.00	133.00
1990	24,300	8,400	9,600	900	250.00	116.00	129.00	174.00
1991	12,990	3,010	6,850	950	334.00	125.00	257.00	282.00
1992	21,060	9,440	13,400	500	243.00	131.00	154.00	204.00
1993	13,790	2,890	8,700	550	206.00	78.00	184.00	156.00
1994	13,550	6,800	10,650	1,100	255.00	75.00	122.00	123.00
1995	12,600	2,730	5,450	1,200	437.00	118.00	173.00	174.00

¹ID, MI, OR, and WA. Mostly prunes; however, estimates include small quantities of plums in all States. ²Includes "Home use." ³Some quantities otherwise processed are included to avoid disclosure of individual operations. ⁴Prices for fresh sales are average prices as sold for ID and MI; equivalent packinghouse door returns for OR and WA. Quantities processed are priced at the equivalent processing plant door level. ⁵Not published to avoid disclosure of individual operations, but is included in total. ⁶Includes ID and OR.
NASS, Crops Branch, (202) 720-2127.

Table 309.—Prunes, dried: United States exports by country of destination, 1992/93–1994/95

Country of destination	Year beginning September			Country of destination	Year beginning September		
	1992/93	1993/94	1994/95		1992/93	1993/94	1994/95
	<i>Metric tons</i>	<i>Metric tons</i>	<i>Metric tons</i>		<i>Metric tons</i>	<i>Metric tons</i>	<i>Metric tons</i>
Europe:				Bermuda and Caribbean:			
Austria	545	448	322	Bermuda	0	2	16
Belgium and Luxembourg	535	600	715	Dominican Republic	96	163	109
Denmark	2,710	1,393	1,454	Haiti	0	6	5
Finland	2,951	2,153	1,719	Netherlands Antilles	134	82	180
France	36	11	696	Trinidad and Tobago	55	5	26
Germany, Fed. Rep. of	17,371	10,848	10,262	Other countries	2	17	59
Greece	156	3	261	Total	287	275	395
Ireland	40	0	30				
Italy	11,485	5,799	6,644	Other countries:			
Netherlands	4,649	3,422	2,912	Australia	754	375	229
Norway	1,567	1,251	1,146	Canada	5,222	4,486	4,250
Norway	2,770	887	1,152	Hong Kong	752	753	500
Sweden	3,539	2,390	2,165	Israel	433	402	612
Switzerland	356	61	88	Japan	15,047	14,375	13,553
United Kingdom	7,635	3,376	4,963	Malaysia	642	380	293
Other countries	312	45	70	New Zealand	766	441	467
Total	56,657	32,687	34,599	Singapore	959	751	745
				Taiwan	860	1,181	1,276
Latin America:				Other countries	1,964	735	1,100
Brazil	162	113	248	Total	27,399	23,879	23,025
Colombia	206	77	69				
Costa Rica	24	36	63	Grand total	86,831	58,578	59,624
Guatemala	25	13	1				
Mexico	1,114	1,005	837				
Panama	150	149	127				
Venezuela	651	237	167				
Other countries	156	107	93				
Total	2,488	1,737	1,605				

FAS, Horticultural and Tropical Products Division, (202) 720–3423. Compiled from reports of the U.S. Department of Commerce.

Table 310.—Prunes: Foreign trade, United States, 1984–93

Year beginning October	Imports				Domestic exports			
	Fresh prunes and plums	Other-wise prepared or preserved	Dried prunes ¹	Total, in terms of fresh ²	Fresh prunes and plums	Dried prunes ¹	Dried, in fruit salad ^{1,3}	Total, in terms of fresh ²
	<i>Metric tons</i>	<i>Metric tons</i>	<i>Metric tons</i>	<i>Metric tons</i>	<i>Metric tons</i>	<i>Metric tons</i>	<i>Metric tons</i>	<i>Metric tons</i>
1984	13,516	1,291	647	16,357	20,850	46,006	848	142,490
1985	15,170	859	1,369	19,496	23,680	50,832	942	158,093
1986	17,937	871	1,354	22,235	33,312	52,648	795	172,058
1987	16,943	457	444	18,507	39,862	59,299	588	195,338
1988	21,879	365	717	24,068	57,585	58,031	1,278	211,560
1989	22,746	622	413	24,377	73,208	74,746	1,322	270,692
1990	24,170	698	372	25,764	74,098	100,081	1,469	337,737
1991	24,115	664	399	25,748	68,273	90,975	1,442	308,202
1992	23,639	837	2,052	29,718	56,952	84,755	1,492	280,862
1993	21,741	921	4,588	34,448	69,913	57,936	1,702	224,743

¹ Net processed weight. ² Exports and imports of dried prunes converted to unprocessed dry weight by dividing by 1.04. Unprocessed dry weight converted to terms of fresh fruit on the basis that 1 pound dried equals 2.7 pounds fresh. ³ "Otherwise prepared or preserved" converted to terms of fresh fruit on the basis that 1 pound equals 0.899 pound fresh. ³ Dried prunes in salad estimated at 43 percent of total dried fruit for salad.

ERS, Field and Specialty Crops Branch, (202) 219–0840.

Table 311.—Strawberries, commercial crop: Production and value per hundredweight, by States, 1993-95

Utilization, season, and State	Production			Value per unit		
	1993	1994	1995 ¹	1993	1994	1995 ¹
FOR FRESH MARKET ²						
Winter:	<i>1,000 cwt.</i>	<i>1,000 cwt.</i>	<i>1,000 cwt.</i>	<i>Dollars per cwt.</i>	<i>Dollars per cwt.</i>	<i>Dollars per cwt.</i>
FL	1,624	1,682	1,680	74.70	60.30	70.60
Total	1,624	1,682	1,680	74.70	60.30	70.60
Spring:						
AR	7	5	12	55.00	65.00	70.00
CA	7,736	9,016	8,001	46.80	59.10	57.40
LA	110	154	95	49.00	47.00	57.00
MI	92	81	96	74.40	70.00	71.00
NJ	18	14	15	85.50	54.20	62.90
NY	162	104	84	136.00	112.00	107.00
NC	108	156	192	60.70	60.10	64.10
OH	64	61	50	74.00	80.00	84.00
OR	60	72	49	65.00	65.00	60.40
PA	54	63	64	108.00	95.00	90.00
WA	22	16	34	78.00	77.00	69.00
WI	57	61	55	80.00	86.00	94.00
Total	8,490	9,803	8,747	50.10	60.20	58.90
US	10,114	11,485	10,427	54.10	60.20	60.80
PROCESSING						
Spring:						
CA	3,685	4,265	3,917	26.00	26.90	23.60
MI	22	18	12	36.00	35.00	36.00
OR	560	630	550	41.20	41.50	43.40
WA	90	96	70	47.00	44.00	44.00
US	4,357	5,009	4,549	28.40	29.10	26.30

¹ Preliminary. ² Mostly for fresh market, but includes some quantities used for processing in States for which processing estimates are not prepared.
 NASS, Crops Branch, (202) 720-2127.

Table 312.—Strawberries, commercial crop: Area, yield, production, value per hundred weight, and total value, United States, 1986-95

Year	Fresh market and processing					Fresh market ³			Processing		
	Area for harvest	Yield per acre	Production ¹	Value ²		Production	Value ²		Production	Value ²	
				Per cwt	Total		Per cwt	Total		Per cwt	Total
	<i>Acres</i>	<i>Cwt.</i>	<i>1,000 cwt.</i>	<i>Dollars per cwt.</i>	<i>1,000 dollars</i>	<i>1,000 cwt.</i>	<i>Dollars per cwt.</i>	<i>1,000 dollars</i>	<i>1,000 cwt.</i>	<i>Dollars per cwt.</i>	<i>1,000 dollars</i>
1986	44,750	229	10,232	49.50	506,089	7,387	57.60	425,346	2,845	28.40	80,743
1987	46,120	242	11,173	49.40	552,336	7,804	58.50	456,290	3,369	28.50	96,046
1988	47,150	250	11,791	46.20	544,279	8,555	54.10	462,690	3,236	25.20	81,589
1989	46,100	248	11,420	47.10	537,756	8,616	53.90	464,499	2,804	26.10	73,257
1990	46,080	272	12,537	47.00	589,588	8,636	55.30	477,487	3,901	28.70	112,101
1991	46,080	296	13,656	46.20	631,458	9,682	54.00	522,567	3,974	27.40	108,891
1992	49,530	269	13,348	52.30	698,004	9,997	61.50	615,243	3,351	24.70	82,761
1993	51,330	282	14,471	46.40	670,753	10,114	54.10	546,849	4,357	28.40	123,904
1994	49,030	336	16,494	50.80	837,038	11,485	60.20	691,310	5,009	29.10	145,728
1995 ⁴	48,430	309	14,976	50.30	753,434	10,427	60.80	633,611	4,549	26.30	119,823

¹ Excludes the following quantities not harvested and not marked because of economic conditions (1,000 hundredweight): 11 in 1986, 239 in 1987, 4 in 1988, 9 in 1989, 13 in 1990, 7 in 1991, 8 in 1992, 6 in 1993, and 50 in 1995. ² Fresh market price and value on f.o.b. basis. Processing price and value at processing plant door. ³ Mostly for fresh market, but includes some quantities used for processing in States for which processing estimates are not prepared. ⁴ Preliminary.
 NASS, Crops Branch, (202) 720-2127.

Table 313.—Strawberries, commercial crop: Area harvested, production, value per hundred weight, by States, 1993–95¹

Season and State	Area harvested			Production			Value per unit		
	1993	1994	1995 ²	1993	1994	1995 ²	1993	1994	1995 ²
Winter:	<i>Acres</i>	<i>Acres</i>	<i>Acres</i>	<i>1,000 cwt.</i>	<i>1,000 cwt.</i>	<i>1,000 cwt.</i>	<i>Dollars per cwt.</i>	<i>Dollars per cwt.</i>	<i>Dollars per cwt.</i>
FL	5,800	5,800	6,000	1,624	1,682	1,680	74.70	60.30	70.60
Total	5,800	5,800	6,000	1,624	1,682	1,680	74.70	60.30	70.60
Spring:									
AR	230	180	180	7	5	12	55.00	65.00	70.00
CA	25,100	23,300	23,600	11,421	13,281	11,918	40.10	48.80	46.30
LA	1,100	1,100	1,000	110	154	95	49.00	47.00	57.00
MI	1,900	1,800	1,800	114	99	108	67.00	63.60	67.10
NJ	500	450	450	18	14	15	85.50	54.20	62.90
NY	2,700	2,600	2,400	162	104	84	136.00	112.00	107.00
NC	2,400	2,400	2,400	108	156	192	60.70	60.10	64.10
OH	1,200	1,200	1,100	64	61	50	74.00	80.00	84.00
OR	6,200	6,100	5,700	620	702	599	43.50	43.90	44.80
PA	1,500	1,500	1,400	54	63	64	108.00	95.00	90.00
WA	1,600	1,400	1,300	112	112	104	53.10	48.70	52.20
WI	1,100	1,200	1,100	57	61	55	80.00	86.00	94.00
Total	45,530	43,230	42,430	12,847	14,812	13,296	42.80	49.70	47.70
US	51,330	49,030	48,430	14,471	16,494	14,976	46.40	50.80	50.30

¹ Includes quantities used for fresh market and processing. ² Preliminary.
NASS, Crops Branch, (202) 720-2127.

Table 314.—Fruits, noncitrus: Production, utilization, and value, United States, 1986–95¹

Year	Utilized production	Fresh ²	Processed						Value of utilized production
			Canned	Dried	Juice	Frozen	Wine	Other	
	<i>1,000 tons</i>	<i>1,000 tons</i>	<i>1,000 tons</i>	<i>1,000 tons</i>	<i>1,000 tons</i>	<i>1,000 tons</i>	<i>1,000 tons</i>	<i>1,000 tons</i>	<i>1,000 dollars</i>
1986	13,365	4,896	2,211	1,668	1,135	286	2,909	260	3,699,956
1987	16,012	5,943	2,369	2,367	1,893	475	2,647	317	4,420,956
1988	15,911	5,909	2,375	2,546	1,415	459	2,983	224	5,102,962
1989	16,345	6,104	2,266	2,857	1,580	479	2,869	190	5,279,382
1990	15,640	6,093	2,244	2,440	1,448	506	2,717	192	5,525,279
1991	15,740	6,215	2,119	2,417	1,583	501	2,739	167	6,021,210
1992	16,997	6,485	2,383	2,369	1,743	497	3,256	264	6,036,615
1993	16,555	6,591	2,040	2,339	1,743	627	3,029	186	6,132,438
1994	17,335	6,943	2,091	2,816	1,881	665	2,711	230	6,271,904
1995 ³	16,190	N.A.	N.A.	N.A.	N.A.	N.A.	N.A.	N.A.	6,620,572

¹ Includes the following crops: Apples, apricots, avocados, bananas, berries (beginning 1992), cherries, cranberries, dates, figs, grapes, guavas (beginning in 1988), kiwifruit, nectarines, olives, papayas, peaches, pears, pineapples, plums, pomegranates (discontinued after 1989), prunes, and strawberries. ² Includes "Home Use," local and roadside sales. ³ Preliminary. N.A. = Not available.
NASS, Crops Branch, (202) 720-2127.

Table 315.—Fruits: Arrivals at 4 markets, by commodities, 1994

Commodity	Baltimore ¹			Boston			New York ³			Philadelphia		
	Rail, boat, and air	Motor-truck ²	Total	Rail, boat, and air	Motor-truck ²	Total	Rail, boat, and air	Motor-truck ²	Total	Rail, boat, and air	Motor-truck ²	Total
	1,000 cwt.	1,000 cwt.	1,000 cwt.	1,000 cwt.	1,000 cwt.	1,000 cwt.	1,000 cwt.	1,000 cwt.	1,000 cwt.	1,000 cwt.	1,000 cwt.	1,000 cwt.
Citrus:												
Grapefruit	18	228	246	19	242	261	324	501	825	60	165	225
Lemons	41	110	151	186	112	298	354	268	622	148	129	277
Limes		34	34		49	49		273	237		15	15
Mixed citrus												
Oranges	94	473	567	660	393	1,053	1,414	954	2,368	504	349	853
Tangelos	1	23	24		21	21		24	24		10	10
Tangerines	2	74	76	1	82	83	50	182	232	2	56	58
Templets	1	21	21		16	16		29	29		12	12
Citrus, other ⁴ ..		6	6		19	19		314	314		24	24
Total	157	969	1,125	866	934	1,800	2,142	2,509	4,651	714	760	1,474
Non-citrus:												
Apples	35	510	545	180	429	609	398	1,513	1,911	176	259	435
Apricots		7	7		1	1		33	33		3	3
Avocados		28	28		36	36		164	164		12	12
Bananas		1,445	1,445		2,298	2,298		727	727		499	499
Blueberries		14	14	2	21	23		59	59		13	13
Cherries	1	17	18	2	16	18	3	89	92	1	31	32
Cranberries		1	1		4	4		4	4			
Grapes, table ..	13	376	389	71	376	447	144	712	856	148	167	315
Grapes, juice ..				11	1	12	24		24	11	1	12
Kiwifruit		13	13		12	12		25	25	3	3	6
Mangoes		12	12		25	25		163	163		33	33
Mixed deciduous												
Nectarines	8	86	94	67	48	115	100	169	269	53	46	99
Papaya								9	9			
Peaches	5	143	148	41	124	165	86	417	503	36	80	116
Pears	6	139	145	52	154	206	157	556	713	71	116	187
Persimmons		2	2		3	3		18	18		3	3
Pineapples	24	57	81	20	69	89	1	98	99		4	4
Plantains		33	33		31	31		221	221			
Plums	8	66	74	45	44	89	85	200	285	39	53	92
Prunes					2	2		11	11		2	2
Pomegranates ..		3	3		4	4		7	7		2	2
Strawberries ...		173	173	4	175	179		373	373		294	294
Fruits, other ...		5	5	1	2	3		11	11		2	2
Total	100	3,130	3,230	496	3,875	4,371	998	5,579	6,577	538	1,623	2,161
Grand total ..	257	4,099	4,355	1,362	4,809	6,171	3,140	8,088	11,228	1,252	2,383	3,635

¹Includes Washington. ²Includes Newark. ³Estimated percentages of completeness for reported truck arrivals for 1994 are as follows: Baltimore 90, Boston 87, New York 82, and Philadelphia 90. ⁴Not otherwise specified.
AMS, Fruit and Vegetable Division, Market News Branch, (202) 720-3343.

FRUITS

V-33

Table 316.—Fruits, fresh: Arrivals at 4 markets, by commodities, 1994

Commodity	Atlanta			Chicago			Los Angeles			San Francisco ²		
	Rail, boat, and air	Motor-truck ¹	Total	Rail, boat, and air	Motor-truck ¹	Total	Rail, boat, and air	Motor-truck ¹	Total	Rail, boat, and air	Motor-truck ¹	Total
	1,000 cwt.	1,000 cwt.	1,000 cwt.	1,000 cwt.	1,000 cwt.	1,000 cwt.	1,000 cwt.	1,000 cwt.	1,000 cwt.	1,000 cwt.	1,000 cwt.	1,000 cwt.
Citrus:												
Grapefruit		146	146	89	349	438		378	378		353	353
Lemons		183	183	395	333	728		502	502		264	264
Limes		64	64		198	198		264	264		163	163
Mixed citrus												
Oranges		420	420	774	1,317	2,091	24	1,679	1,703		1,097	1,097
Tangelos		15	15		63	63		30	30		30	30
Tangerines		73	73		190	195		134	134		199	199
Templets		16	16		22	22						
Citrus, other ³ ..				15	15						16	16
Total		917	917	1,263	2,487	3,750	24	2,987	3,011		2,122	2,122
Noncitrus:												
Apples	20	540	560	717	979	1,696	4	2,744	2,748	29	1,273	1,302
Apricots		1	1	1	30	31	3	35	38		27	27
Avocados		34	34		172	172	18	184	202		210	210
Bananas		1,039	1,039		2,096	2,096	4,643	996	5,639		2,847	2,847
Blueberries		4	4	5	28	33	6	18	24	1	10	11
Cherries		5	5	410	512	922	1	99	100		52	52
Cranberries		1	1				6	6			8	8
Grapes, table ..		272	272	188	698	886	218	596	814		504	504
Grapes, juice ..				21		21						
Kiwifruit		9	9		26	26	4	10	14		15	15
Mangoes		9	9		64	64	2	284	286		272	272
Mixed deciduous												
Nectarines		38	38	98	172	270	42	304	346		157	157
Papaya					9	9	79	86	165	33	16	49
Peaches		115	115	87	280	367	42	387	429		199	199
Pears	1	70	71	381	468	849	26	586	612	2	365	367
Persimmons					7	7		14	14		12	12
Pineapples		63	63	6	165	171	169	2	171	175		175
Plaintains		1	1		9	9		12	12		51	51
Plums		48	48	100	163	263	33	157	190		85	85
Prunes					4	4		3	3		10	10
Pomegranates ..		1	1		22	22		9	9		5	5
Strawberries ...		180	180	1	353	354	2	383	385		194	194
Fruits, other ³ ..					4	4	5	76	81	6	68	74
Total	21	2,430	2,451	2,015	6,261	8,276	5,297	6,991	12,288	246	6,380	6,626
Grand total ..	21	3,347	3,368	3,278	8,748	12,026	5,321	9,978	15,299	276	8,502	8,748

¹ Includes Oakland. ² Estimated percentages of completeness for reported truck arrivals for 1994 are as follows: Atlanta 96, Chicago 97, Los Angeles 82, and San Francisco 85. ³ Not otherwise specified.

AMS, Fruit and Vegetables Division, Market News Branch (202) 720-3343.

Table 317.—Fruits, fresh: Total reported domestic rail, truck, and air shipments, 1994

Commodity	Jan.	Feb.	Mar.	Apr.	May	Jun.	Jul.	Aug.	Sep.	Oct.	Nov.	Dec.	Total
	1,000 cwt.	1,000 cwt.	1,000 cwt.	1,000 cwt.	1,000 cwt.	1,000 cwt.	1,000 cwt.	1,000 cwt.	1,000 cwt.	1,000 cwt.	1,000 cwt.	1,000 cwt.	1,000 cwt.
Citrus:													
Grapefruit	2,784	2,861	3,449	2,352	1,058	420	113	15	727	2,007	2,186	3,861	21,833
Lemons	940	790	800	964	829	876	423	26	23	43	74	92	5,880
Limes	15	6	5	3	2	13	40	26	16	21	26	19	192
Mixed citrus													
Oranges	4,379	4,311	5,073	5,210	4,133	2,435	320	168	306	1,008	1,428	2,794	31,565
Tangelos	188	33								42	209	390	862
Tangerines	506	350	382	132	18	5			54	437	691	335	2,910
Templets	283	214	90	13	1							28	629
Citrus, other ¹									8	42			50
Total	9,095	8,565	9,799	8,674	6,041	3,749	896	235	1,134	3,600	4,614	7,519	63,921
Noncitrus:													
Apples	4,794	3,949	4,182	4,428	3,271	2,703	3,087	2,417	3,289	5,536	4,425	5,613	47,694
Apricots					161	251	134	61	1				608
Avocados	300	225	244	296	244	235	325	284	230	148	109	162	2,802
Blueberries				8	68	125	222	83	14				420
Cranberries									4	27	38		69
Cherries					392	943	307	5					1,642
Grapes, table	79	9			748	1,371	1,916	3,025	2,681	2,255	1,750	544	14,378
Grapes, juice								17	269	20			306
Kiwifruit	202	157	137	83	11					38	101	107	836
Mangoes		1	1		2	1	4	2	1	2			14
Mixed deciduous ..													
Nectarines			2	22	564	1,159	1,335	1,325	474	5			4,886
Papaya	48	36	31	36	42	45	42	42	36	34	51	53	496
Peaches				29	1,025	1,922	1,760	1,488	662	87	4		6,977
Pears	998	897	547	802	564	377	501	824	1,106	1,716	1,738	1,399	11,469
Pineapples	171	163	222	185	181	223	220	216	189	238	182	195	2,385
Plums					298	1,044	1,498	1,325	589	101	4		4,859
Prunes ¹							7	61	18	2			88
Strawberries	212	333	1,019	1,769	1,773	1,387	1,083	904	698	406	86	38	9,708
Fruits, other ¹													
Total	6,804	5,670	6,385	7,658	9,344	11,786	12,441	12,074	10,261	10,615	8,488	8,111	109,737
Grand total	15,899	14,235	16,184	16,332	15,385	15,535	13,337	12,309	11,395	14,215	13,102	15,630	173,658

¹ Not otherwise specified.
AMS, Fruit and Vegetable Division, Market News Branch, (202) 720-3343.

Table 318.—Fruits, dried: Production (dry basis), California, 1985-94

Year	Apples	Apricots	Dates	Figs ¹	Peaches ²	Pears ³	Prunes	Grapes ⁴	Total
	Tons	Tons	Tons	Tons	Tons	Tons	Tons	Tons	Tons
1985	4,700	2,000	28,900	10,400	2,050	1,310	141,000	347,940	538,300
1986	1,950	1,400	17,800	16,200	1,800	1,410	99,000	278,900	418,460
1987	2,900	2,980	19,400	16,850	3,900	1,130	229,000	357,950	634,110
1988	2,050	2,640	22,000	18,000	2,500	1,220	151,000	366,500	565,910
1989	2,850	3,900	22,000	15,500	1,700	1,140	226,000	433,200	706,290
1990	3,200	3,050	22,000	16,000	1,500	1,270	147,000	395,500	591,520
1991	1,870	2,600	22,000	14,600	2,400	1,550	187,000	348,000	580,020
1992	2,026	2,500	21,000	15,200	2,100	1,500	184,000	391,500	619,826
1993	2,290	2,730	25,000	19,300	1,850	1,500	121,000	388,300	561,970
1994		4,060		15,700	1,450	1,300	193,000	421,400	636,910

¹ Standard and substandard. ² Freestone only. ³ Bartlett only. ⁴ Raisin and table type.
ERS, Field and Specialty Crops Branch, (202) 219-0840.

Table 319.—Fruits, dried: Commercial production in specified countries, 1992/93–1994/95

Commodity/country	1992/93	1993/94	1994/95 ¹	Commodity/country	1992/93	1993/94	1994/95 ¹
	<i>Metric tons</i>	<i>Metric tons</i>	<i>Metric tons</i>		<i>Metric tons</i>	<i>Metric tons</i>	<i>Metric tons</i>
Prunes:				Raisins:			
Chile	13,250	14,700	15,500	Australia	42,634	44,783	42,000
France	50,971	45,000	49,500	Chile	22,000	34,950	35,150
United States	166,922	109,769	175,087	Greece	38,000	37,000	28,000
Total	231,143	169,469	240,087	Mexico	13,000	10,000	20,000
				South Africa	27,023	31,742	34,100
				Turkey	150,000	200,000	155,000
				United States	333,146	328,310	343,973
				Total	625,803	686,785	658,223

¹ Preliminary.

FAS, Horticultural and Tropical Products Division, (202) 720-3423. Prepared or estimated on the basis of official statistics of foreign governments, other foreign source materials, reports of U.S. Agricultural Counselors, Attaches, and Foreign Service Officers, results of office research, and related information.

Table 320.—Fruits, frozen: Commercial pack, by kinds and areas, United States, 1994¹

Commodity	Northeast ²	South ³	Midwest ⁴	West ⁵	Total
	<i>1,000 pounds</i>	<i>1,000 pounds</i>	<i>1,000 pounds</i>	<i>1,000 pounds</i>	<i>1,000 pounds</i>
Apples	⁹ 35,142	36,493	20,074	2,930,243	91,709
Apricots				18,192	18,192
Cherries, sweet				18,480	18,480
Peaches				^{9 10 11} 102,073	102,073
Plums and prunes				1,181	1,181
Purees, noncitrus ⁶			63,122		63,122
Berries:					
Blackberries				24,226	24,226
Blueberries	⁹ 68,152	31,207	10,658		110,017
Boysenberries				5,105	5,105
Loganberries				59	59
Raspberries, black				1,146	1,146
Raspberries, red				¹¹ 28,754	28,754
Strawberries					369,035
Citrus juices ⁷					2,068,202
Miscellaneous fruits and berries ⁸					173,099
Total				3,358,767	3,074,400

¹Includes the commercial pack only and does not include quantities produced in frozen food locker plants. ²Connecticut, Maine, Massachusetts, New Jersey, New York, Pennsylvania, Rhode Island and Vermont. ³Alabama, Arkansas, Delaware, Florida, Georgia, Kentucky, Louisiana, Maryland, Mississippi, Missouri, North Carolina, Oklahoma, South Carolina, Tennessee, Texas, Virginia, and West Virginia. ⁴Illinois, Indiana, Michigan, Minnesota, Nebraska, Ohio, and Wisconsin. ⁵Arizona, California, Colorado, Hawaii, Idaho, Montana, Oregon, Utah, and Washington. ⁶1994 data includes purees of apricot, apple, blackberry, black currant, blueberry, boysenberry, cherry, cranberry, grape, guava, loganberry, nectarines, peach, pear, plum, prune, black and red raspberry, and strawberry. ⁷See table 271 for packs of concentrated orange and grapefruit juice in gallons. ⁸1994 data includes avocado, cantaloupe, cranberries, elderberries, figs, gooseberries, grapes, honeydew, melon balls, mixed fruit, ollalieberries, oranges, pears, pineapple, and RSP cherries (104,646 pounds). ⁹Includes pack in South. ¹⁰Includes pack in Northeast. ¹¹Includes pack in Midwest.

ERS, Field and Specialty Crops Branch, (202) 219-0887. Data from American Frozen Food Institute and Florida Citrus Processor Association.

Table 321.—Fruits, frozen: Commercial pack, United States, 1985–94

Commodity	1985	1986	1987	1988	1989	1990	1991	1992	1993	1994
	1,000 pounds	1,000 pounds	1,000 pounds	1,000 pounds	1,000 pounds	1,000 pounds	1,000 pounds	1,000 pounds	1,000 pounds	1,000 pounds
Apples	85,481	111,133	122,399	117,076	123,260	125,540	149,423	115,525	93,016	91,709
Apricots	11,770	14,308	22,227	14,675	17,564	16,512	15,626	21,237	17,901	18,192
Cherries, sweet ..	10,262	14,404	21,332	18,482	14,010	13,695	14,555	20,095	16,037	18,480
Peaches	80,990	100,730	105,764	110,286	99,217	111,203	100,157	99,010	94,381	102,073
Plums and prunes	4,400	4,354	657	507	753	986	901	1,229	870	1,181
Purees, noncitrus	24,655	29,424	39,749	24,707	28,686	42,452	41,875	52,315	63,928	63,122
Berries:										
Blackberries	12,681	12,955	21,027	21,437	13,765	18,619	13,647	31,498	23,118	24,226
Blueberries	54,506	77,754	69,153	82,382	89,274	102,141	98,030	123,738	139,059	110,017
Boysenberries ..	2,561	5,493	5,234	6,706	4,936	7,278	5,619	6,917	4,437	5,105
Loganberries ..	775	1,133	1,016	1,461	720	964	1,290	1,634	89	59
Raspberries	14,784	15,323	26,471	26,509	29,284	27,971	25,813	32,145	25,479	29,900
Strawberries	229,152	237,604	334,406	274,610	238,152	305,924	330,223	268,494	365,663	369,035
Citrus juices ¹	1,402,320	1,551,722	1,599,370	2,096,657	1,928,605	1,346,406	1,544,938	1,647,838	2,377,976	2,068,202
Miscellaneous fruits and berries	20,863	22,960	80,727	130,908	145,070	120,609	105,626	154,957	136,813	173,099
Total	1,955,200	2,199,297	2,449,532	2,926,403	2,733,296	2,240,300	2,447,723	2,576,632	3,358,767	3,074,400

¹ Florida only.

ERS, Field and Specialty Crops Branch, (202) 219-0887. Data from American Frozen Food Institute and Florida Citrus Processor Association.

Table 322.—Fruit and juices: Cold-storage holdings, end of month, United States, 1994 and 1995

Month	Fresh		Frozen					
	Apples, Total		Apples		Blueberries		Cherries, Tart (RSP)	
	1994	1995	1994	1995	1994	1995	1994	1995
	1,000 pounds	1,000 pounds	1,000 pounds	1,000 pounds	1,000 pounds	1,000 pounds	1,000 pounds	1,000 pounds
January	3,747,342	3,722,271	90,715	92,218	88,817	70,955	87,528	112,899
February	2,937,765	2,987,470	96,420	107,080	77,475	61,018	75,174	108,647
March	2,205,014	2,211,602	103,281	107,179	68,310	57,130	64,165	101,754
April	1,582,848	1,618,929	97,584	111,596	56,631	46,925	53,390	88,683
May	1,021,914	947,590	90,756	97,839	48,652	39,462	45,245	80,657
June	567,417	596,196	80,918	94,080	41,407	32,192	35,854	72,500
July	260,120	271,900	71,456	80,495	51,592	37,335	143,112	131,704
August	72,378	68,430	62,913	74,904	116,209	95,570	167,876	178,397
September	3,874,263	3,225,032	56,350	64,309	112,217	98,555	150,058	162,583
October	6,019,303	5,385,954	64,022	61,212	93,695	85,104	140,323	149,275
November	5,198,842	4,770,744	72,062	77,422	84,830	81,593	127,642	141,057
December	4,486,023	4,075,462	92,348	84,050	78,307	72,813	120,864	129,438

Month	Frozen—Continued					
	Strawberries		Total frozen fruit		Orange juice	
	1994	1995	1994	1995	1994	1995
	1,000 pounds	1,000 pounds	1,000 pounds	1,000 pounds	1,000 pounds	1,000 pounds
January	184,282	219,544	966,930	1,119,635	1,248,866	1,703,967
February	154,756	199,695	873,978	1,046,052	1,429,035	1,685,057
March	144,974	180,041	780,860	925,858	1,273,827	1,773,349
April	169,830	182,648	729,068	861,461	1,499,649	1,864,582
May	202,605	213,608	704,972	794,746	1,615,164	1,833,837
June	335,135	374,711	803,652	881,728	1,521,784	1,631,648
July	343,844	399,348	981,537	1,014,130	1,449,083	1,424,140
August	339,386	381,323	1,041,859	1,059,048	1,257,537	1,233,683
September	328,359	350,060	1,056,933	1,037,243	1,119,568	1,038,269
October	317,215	303,378	1,439,696	1,334,960	1,026,089	830,295
November	267,077	285,358	1,329,711	1,275,153	1,055,880	897,717
December	244,740	255,117	1,257,120	1,166,576	1,353,053	1,050,596

NASS, Livestock, Dairy, and Poultry Branch, (202) 720-6146.

Table 323.—Fruits: Per capita consumption, United States, 1984–93¹

Year	Fruits used fresh		
	Citrus fruit ²	Noncitrus fruits ³	Canned fruits ⁴
	Per capita	Per capita	Per capita
	<i>Pounds</i>	<i>Pounds</i>	<i>Pounds</i>
1984	22.5	65.8	15.3
1985	21.5	65.4	16.0
1986	24.2	68.9	16.5
1987	23.9	72.5	16.6
1988	25.4	72.4	16.3
1989	23.5	73.1	16.6
1990	21.4	71.1	16.5
1991	19.1	70.6	15.4
1992	24.4	73.9	17.8
1993 ⁸	25.9	73.9	16.5

Year	Canned juice ⁵	Frozen fruit ⁶	Dried fruits ⁷
	Per capita	Per capita	Per capita
	<i>Gallons</i>	<i>Pounds</i>	<i>Pounds</i>
1984	7.7	2.9	3.0
1985	8.0	3.0	2.9
1986	8.2	3.4	2.7
1987	8.3	3.6	3.1
1988	7.7	3.3	3.3
1989	6.9	3.7	3.2
1990	7.9	3.5	3.4
1991	7.3	3.4	3.1
1992	8.4	3.5	2.8
1993 ⁸	8.6	3.4	3.2

¹Fresh citrus fruits, canned fruit, and fruit juices are on a crop-year basis. Dried fruits are on a pack-year basis. The per capita consumption was obtained by dividing the total consumption by total population. ²Oranges and tangelos, tangerines and tangelos, lemons, limes, and grapefruit. ³Apples, apricots, avocados, bananas, cherries, cranberries, grapes, kiwifruit, mangoes, peaches and nectarines, pears, pineapples, papayas, plums and prunes, and strawberries. ⁴Apples, apricots, cherries, olives, peaches, pears, pineapples, and plums and prunes. ⁵Orange, grapefruit, lemon, lime, apple, grape, pineapple, and prune. ⁶Blackberries, blueberries, raspberries, strawberries, other berries, apples, apricots, cherries, and peaches. ⁷Apples, apricots, dates, figs, peaches, pears, prunes, and raisins. Dried data in terms of processed weight. ⁸Preliminary.

ERS, Field and Specialty Crops Branch, (202) 219-0840.

Table 324.—All tree nuts: Supply and utilization, United States, 1985/86–1994/95

Market year ¹	Beginning stocks	Marketable production ²	Imports	Total supply	Exports	Ending stocks	Domestic consumption	
							Total	Per capita Pounds
—Million pounds (shelled)—								
1985/86	331.5	761.7	151.1	1,245.0	393.0	265.1	586.2	2.45
1986/87	265.1	553.5	143.0	964.7	240.6	186.2	534.8	2.21
1987/88	186.2	1000.6	132.4	1,320.6	426.1	356.8	536.3	2.20
1988/89	356.8	940.6	126.7	1,422.4	456.1	404.7	563.3	2.29
1989/90	404.7	794.6	169.8	1,369.0	488.2	326.2	554.7	2.23
1990/91	326.2	961.6	198.4	1,486.1	522.6	354.0	609.6	2.42
1991/92	354.0	848.9	171.1	1,373.9	563.7	262.5	547.7	2.16
1992/93	262.5	860.3	228.1	1,351.0	544.0	237.0	569.9	2.22
1993/94	237.0	947.1	214.6	1,398.0	538.2	279.4	581.1	2.24
1994/95	279.4	1,061.2	217.4	1,558.0	638.0	326.5	593.5	2.27

¹Marketing season begins July 1 for almonds, hazelnuts, macadamias, pecans, and other nuts; August 1 for walnuts; and September 1 for pistachios. ²Utilized production (NASS data) minus inedibles and noncommercial usage.

ERS, Field and Specialty Crops Branch, (202) 219-0840.

Table 325.—Tree nuts: Commercial production in specified countries, 1992/93–94/95

Commodity and country	1992/ 93	1993/ 94	1994/ 95 ¹	Commodity and country	1992/ 93	1993/ 94	1994/ 95 ¹
	<i>1,000 metric tons</i>	<i>1,000 metric tons</i>	<i>1,000 metric tons</i>		<i>1,000 metric tons</i>	<i>1,000 metric tons</i>	<i>1,000 metric tons</i>
Almonds (shelled basis):				Hazelnuts (continued):			
Greece	16.0	20.0	16.0	Turkey	580.0	300.0	525.0
Italy	18.0	15.0	14.0	United States	25.1	37.2	19.1
Morocco	8.2	8.9	5.7	Total	721.5	419.3	697.8
Spain	72.0	84.0	70.2	Walnuts:			
Turkey	15.7	16.0	15.7	Chile	9.5	10.0	10.5
United States	248.6	222.3	331.1	China	163.9	192.2	210.0
Total	378.5	366.2	452.7	France	24.0	18.9	29.0
Hazelnuts (in-shell basis):				India	23.5	22.0	28.0
Italy	90.0	70.0	130.0	Italy	22.0	16.0	9.0
Spain	26.4	12.1	23.7	Turkey	66.0	65.0	66.0
				United States	184.2	235.9	210.5
				Total	493.1	560.0	563.0

¹ Preliminary.

FAS, Horticultural and Tropical Products Division, (202) 720-3423. Prepared or estimated on the basis of official statistics of foreign governments, other foreign source materials, reports of U.S. Agricultural Counselors, Attachés and Foreign Service Officers, results of office research, and related information.

Table 326.—Almonds (shelled basis): Production, marketing year average price per pound, and value, California, 1986–95¹

Year	Production	Price	Value	Year	Production	Price	Value
	<i>Million pounds</i>	<i>Cents</i>	<i>1,000 dollars</i>		<i>Million pounds</i>	<i>Cents</i>	<i>1,000 dollars</i>
1986	250.0	192.0	461,568	1991	490.0	119.0	564,179
1987	660.0	100.0	648,000	1992	548.0	130.0	691,340
1988	590.0	105.0	600,075	1993	490.0	194.0	930,618
1989	490.0	102.0	480,930	1994	735.0	125.0	900,375
1990	660.0	93.0	597,990	1995	370.0	250.0	888,000

¹ Price and value are based on edible portion of the crop only. Included in production are inedible quantities of no value as follows (million pounds): 1986—9.80; 1987—12.0; 1988—18.5; 1989—18.5, 1990—17.0; 1991—15.9; 1992—16.2; 1993—10.3. 1994—14.7; 1995—14.8.

NASS, Crops Branch, (202) 720-2127.

Table 327.—Almonds (shelled basis¹): Foreign trade, United States, 1984–93

Year beginning October	Imports	Domestic exports	Year beginning October	Imports	Domestic exports
	<i>Metric tons</i>	<i>Metric tons</i>		<i>Metric tons</i>	<i>Metric tons</i>
1984	110	128,484	1989	26	144,633
1985	185	119,982	1990	50	133,740
1986	719	73,653	1991	53	121,831
1987	174	150,191	1992	27	114,530
1988	150	136,177	1993	47	125,014

¹ Imports of unshelled nuts converted to shelled basis at ratio of 1.67 to 1. Exports of unshelled nuts converted to shelled basis at ratio of 1.67 to 1.0.

ERS, Field and Specialty Crops Branch, (202) 219-0887.

Table 328.—Hazelnuts (in-shell basis): Production, marketing year average price per ton, and value, United States, 1986–95

Year	Oregon			Washington			Total		
	Production	Price	Value	Production	Price	Value	Production	Price	Value
	Tons	Dollars	1,000 dollars	Tons	Dollars	1,000 dollars	Tons	Dollars	1,000 dollars
1986	14,900	724	10,788	200	895	179	15,100	726	10,967
1987	21,500	956	20,554	300	1,160	348	21,800	959	20,902
1988	16,300	853	13,904	200	891	178	16,500	853	14,082
1989	12,800	817	10,458	200	1,030	206	13,000	820	10,664
1990	21,500	783	16,835	200	880	176	21,700	784	17,011
1991	25,300	726	18,368	200	755	151	25,500	726	18,519
1992	27,500	552	15,180	200	620	124	27,700	552	15,304
1993	40,800	633	25,826	200	685	137	41,000	633	25,963
1994	21,000	834	17,514	100	900	90	21,100	834	17,604
1995 ¹	38,800	887	34,416	200	946	189	39,000	887	34,605

¹ Preliminary.

NASS, Crops Branch, (202) 720-2127.

Table 329.—Hazelnuts (shelled basis¹): Foreign trade, United States, 1984–93

Year beginning October	Imports	Domestic exports	Year beginning October	Imports	Domestic exports
	Metric tons	Metric tons		Metric tons	Metric tons
1984	3,498	1,271	1989	3,034	2,109
1985	1,760	3,766	1990	3,987	2,987
1986	1,844	2,579	1991	2,514	4,717
1987	1,797	3,281	1992	3,962	3,515
1988	4,373	2,210	1993	3,835	6,933

¹ Imports of unshelled nuts converted to shelled basis at ratio of 2.22 to 1. Exports of unshelled nuts converted to shelled basis at ratio of 2.50 to 1.

ERS, Field and Specialty Crops Branch, (202) 219-0887.

Table 330.—Macadamia nuts (in-shell basis): Area, yield, production, price, and value, Hawaii, 1986–95

Year	Area harvested	Yield per harvested acre	Production	Price per pound	Value
	Acres	1,000 pounds	1,000 pounds	Cents	1,000 dollars
1986	14,400	3.1	44,000	80.0	35,200
1987	15,600	2.7	42,700	84.0	35,868
1988	16,600	2.7	45,500	90.0	40,950
1989	18,200	2.8	50,500	89.0	44,945
1990	18,400	2.7	50,000	82.0	41,000
1991	18,200	2.7	49,500	70.0	34,650
1992	17,500	2.7	48,000	68.0	32,640
1993	18,500	2.6	48,500	68.0	32,980
1994	18,500	2.8	52,500	69.0	36,225
1995 ¹	19,300	2.8	54,000	73.0	39,420

¹ Preliminary.

NASS, Crops Branch, (202) 720-2127.

Table 331.—Pecans (in-shell basis): Production, marketing year average price per pound, and value, United States, 1986–95

Year	Improved varieties			Native and seedling			All pecans		
	Production <i>1,000 pounds</i>	Price <i>Cents</i>	Value <i>1,000 dollars</i>	Production <i>1,000 pounds</i>	Price <i>Cents</i>	Value <i>1,000 dollars</i>	Production <i>1,000 pounds</i>	Price <i>Cents</i>	Value <i>1,000 dollars</i>
1986	182,650	79.3	144,765	90,050	57.6	51,884	272,700	72.1	196,649
1987	179,650	60.1	107,953	82,550	37.7	31,156	262,200	53.1	139,109
1988 ¹	185,500	62.6	116,210	122,700	41.1	50,448	308,200	54.1	166,658
1989 ²	161,000	78.6	126,491	73,200	53.8	39,350	250,500	71.5	179,040
1990	143,500	128.0	184,135	41,250	90.2	37,212	205,000	121.0	247,590
1991	163,300	114.0	186,917	115,000	83.5	95,969	299,000	104.0	309,524
1992	104,800	157.0	164,333	41,100	114.0	46,794	166,000	145.0	240,362
1993	237,100	62.9	149,189	109,200	39.6	43,270	365,000	58.6	213,862
1994	118,900	115.0	136,945	59,600	76.4	45,531	199,000	104.0	207,345
1995 ³	154,700	118.0	181,512	67,600	66.3	44,830	238,000	104.0	248,175

¹ CA added to program in 1988. ² AZ, KS, MO, and TN added to program in 1989. No breakdown between improved varieties and native and seedling varieties available. ³ Preliminary.
NASS, Crops Branch, (202) 720-2127.

Table 332.—Pecans (in-shell basis): Production and marketing year average price per pound, by States, 1993–95

Item and State	Production			Price for crop of—		
	1993 <i>1,000 pounds</i>	1994 <i>1,000 pounds</i>	1995 ¹ <i>1,000 pounds</i>	1993 <i>Cents</i>	1994 <i>Cents</i>	1995 ¹ <i>Cents</i>
IMPROVED VARIETIES²						
AL	15,000	2,000	5,000	44.0	93.6	91.4
AR	600	600	900	87.0	120.0	140.0
CA	3,000	1,500	2,800	96.0	116.0	128.0
FL	3,200	400	900	49.0	100.0	90.0
GA	124,000	50,000	65,000	59.0	103.0	118.0
LA	2,500	1,500	2,000	50.0	110.0	90.0
MS	3,500	1,300	68.0	115.0
NM	36,000	24,000	30,000	60.0	129.0	135.0
NC	1,200	2,200	1,400	65.0	75.0	75.0
OK	1,000	1,300	3,000	71.0	151.0	105.0
SC	2,100	5,400	2,400	82.8	85.0	87.0
TX	45,000	30,000	40,000	80.0	133.0	115.0
US	237,100	118,900	154,700	62.9	115.0	118.0
NATIVE AND SEEDLING						
AL	11,000	2,000	3,000	39.0	64.4	68.3
AR	900	900	700	52.0	80.0	80.0
FL	4,300	1,500	800	44.0	80.0	65.0
GA	26,000	15,000	10,000	40.0	76.0	84.0
KS	1,800	3,600	2,000	50.0	102.0	100.0
LA	13,500	9,500	12,000	35.0	70.0	55.0
MS	2,500	200	38.0	85.0
NC	1,300	2,800	1,300	40.0	65.0	65.0
OK	17,000	10,700	17,000	39.0	69.8	60.0
SC	900	3,600	600	55.0	67.0	81.0
TX	30,000	10,000	20,000	40.0	89.0	65.0
US	109,200	59,600	67,600	39.6	76.4	66.3
ALL PECANS						
AL	26,000	4,000	8,000	41.9	79.0	82.7
AR	1,500	1,500	1,600	66.0	96.0	114.0
CA	3,000	1,500	2,800	96.0	116.0	128.0
FL	7,500	1,900	1,700	46.1	84.2	76.2
GA	150,000	65,000	75,000	55.7	96.8	113.0
KS	1,800	3,600	2,000	50.0	102.0	100.0
LA	16,000	11,000	14,000	37.3	75.5	60.0
MS	6,000	1,500	55.5	111.0
NM	36,000	24,000	30,000	60.0	129.0	135.0
NC	2,500	5,000	2,700	52.0	69.4	70.2
OK	18,000	12,000	20,000	40.8	78.6	66.8
SC	3,000	9,000	3,000	74.5	77.8	85.8
TX	75,000	40,000	60,000	64.0	122.0	98.3
Other States ³	18,700	20,500	15,700	114.0	121.0	130.0
US	365,000	199,000	238,000	58.6	104.0	104.0

¹ Preliminary. ² Budded, grafted or topworked varieties. ³ AZ, MO, and TN in 1993 and AZ, MS, MO and TN in 1994 and 1995. No breakdown between improved varieties and native and seedling varieties is available.
NASS, Crops Branch, (202) 720-2127.

Table 333.—Pecans (shelled basis¹): Foreign trade, United States, 1984–93

Year beginning October	Imports	Domestic exports	Year beginning October	Imports	Domestic exports
	<i>Metric tons</i>	<i>Metric tons</i>		<i>Metric tons</i>	<i>Metric tons</i>
1984	1,336	931	1989	6,391	5,062
1985	5,181	968	1990	10,516	7,607
1986	3,938	1,229	1991	8,262	7,767
1987	5,345	1,961	1992	12,864	6,542
1988	757	2,641	1993	9,192	7,616

¹Imports of unshelled nuts converted to shelled basis at ratio of 2.50 to 1. Exports of unshelled nuts converted to shelled basis at ratio of 2.50 to 1.

ERS, Field and Specialty Crops Branch, (202) 219-0887.

Table 334.—Walnuts (English): Production, marketing year average price per ton, and value, United States, 1986–95

Year	California			Year	California		
	Production	Price	Value		Production	Price	Value
	<i>Tons</i>	<i>Dollars</i>	<i>1,000 dollars</i>		<i>Tons</i>	<i>Dollars</i>	<i>1,000 dollars</i>
1986	180,000	1,080	194,400	1991	259,000	1,060	274,540
1987	247,000	984	243,048	1992	203,000	1,410	286,230
1988	209,000	922	192,698	1993	260,000	1,390	361,400
1989	229,000	1,070	245,030	1994	232,000	1,030	238,960
1990	227,000	1,040	236,080	1995 ¹	234,000	N.A.	N.A.

¹Preliminary. N.A. = Not available.

NASS, Crops Branch, (202) 720-2127.

Table 335.—Walnuts (shelled basis¹): Foreign trade, United States, 1984–93

Year beginning October	Imports	Domestic exports	Year beginning October	Imports	Domestic exports
	<i>Metric tons</i>	<i>Metric tons</i>		<i>Metric tons</i>	<i>Metric tons</i>
1984	165	24,509	1989	66	34,912
1985	43	24,109	1990	65	30,973
1986	1,261	29,216	1991	26	43,748
1987	158	29,161	1992	3,835	30,172
1988	72	31,646	1993	333	38,396

¹Imports of unshelled nuts converted to shelled basis at ratio of 2.50 to 1. Exports of unshelled nuts converted to shelled basis at ratio of 2.50 to 1.

ERS, Field and Specialty Crops Branch, (202) 219-0840.

Table 336.—Cacao beans: United States imports by country of origin, 1992–94

Continent and country	1992	1993	1994 ¹	Continent and country	1992	1993	1994 ¹
	<i>Metric tons</i>	<i>Metric tons</i>	<i>Metric tons</i>		<i>Metric tons</i>	<i>Metric tons</i>	<i>Metric tons</i>
North America:				Africa:			
Costa Rica	0	0	29	Nigeria	11,480	25,048	16,194
Dominican Republic	37,667	39,468	46,171	Cote d'Ivoire	68,781	83,483	78,405
Guatemala	160	137	117	Ghana	23,140	49,860	8,700
Haiti	0	0	0	Other countries	28	250	0
Honduras	840	993	600	Total	103,429	158,641	103,299
Mexico	12,308	9,953	184	Asia and Oceania:			
Trinidad and Tobago	632	1,108	706	Indonesia	95,304	75,695	86,672
Other countries	641	641	1,107	Malaysia	28,579	17,468	1,300
Total	52,300	48,914	48,914	Papua New Guinea	18,502	19,961	10,926
South America:				Other countries	573	194	161
Brazil	56,418	54,563	27,834	Total	142,958	113,318	99,059
Colombia	520	3,901	0	Europe:	1,504	3,450	751
Ecuador	20,982	21,468	30,326	Grand total	378,980	411,937	312,442
Peru	191	0	0				
Venezuela	731	4,295	2,258				
Total	78,842	84,227	60,418				

¹ Preliminary.
FAS, Horticultural and Tropical Products Division, (202) 720-3423. Compiled from reports of the U.S. Department of Commerce.

Table 337.—Cacao beans: Exports from principal producing countries 1991/92–1993/94

Continent and country	1991/92	1992/93	1993/94 ¹	Continent and country	1991/92	1992/93	1993/94 ¹
	<i>Metric tons</i>	<i>Metric tons</i>	<i>Metric tons</i>		<i>Metric tons</i>	<i>Metric tons</i>	<i>Metric tons</i>
North America:				Africa:			
Costa Rica	252	534	260	Ghana	254,444	230,406	261,074
Dominican Republic	42,135	46,085	54,726	Cote d'Ivoire	625,343	626,944	788,235
Grenada	730	890	800	Kenya	30	0	0
Haiti	3,176	2,099	2,556	Liberia	460	100	70
Honduras	2,620	3,780	2,830	Madagascar	3,310	2,965	3,700
Jamaica	1,850	1,780	2,330	Nigeria	96,000	141,277	122,238
Mexico	16,365	21,119	9,445	Sao Tome and Principe	2,590	3,040	3,870
Trinidad and Tobago	1,352	1,595	1,466	Sierra Leone	6,170	2,650	2,840
Other countries	1,223	736	922	Tanzania	1,950	2,060	800
Total	69,703	78,618	75,335	Togo	4,200	3,200	4,000
South America:				Uganda	600	780	700
Brazil	75,024	95,491	85,876	Zaire	3,240	3,940	3,500
Colombia	5,050	5,180	8,740	Total	1,095,820	1,129,990	1,286,090
Ecuador	41,382	38,970	46,569	Asia and Oceania:			
Venezuela	7,145	7,236	10,134	Indonesia	143,307	194,945	211,238
Other Countries	90	176	250	Malaysia	131,404	121,312	100,941
Total	128,691	147,053	151,569	Papua New Guinea	40,913	38,531	31,105
Africa:				Solomon Islands	3,471	4,526	3,000
Benin	0	370	0	Sri Lanka	0	15	68
Cameroon	88,933	102,074	85,359	Vanuatu	1,539	1,538	1,996
Congo	260	260	200	Other Countries	1,422	339	269
Equatorial Guinea	3,500	5,720	4,000	Total	322,060	361,210	348,620
Gabon	1,367	2,055	1,500	Grand total	1,616,270	1,716,870	1,861,610
Africa—Con. Guinea	3,420	2,150	4,000				

¹ Preliminary
FAS, Horticultural and Tropical Products Division, (202) 720-3423. International Cocoa Organization.

Table 338.—Coffee: United States imports by country of origin, 1992–94 ¹

Continent and country	1992	1993	1994 ²	Continent and country	1992	1993	1994 ²
	<i>1,000 bags</i>	<i>1,000 bags</i>	<i>1,000 bags</i>		<i>1,000 bags</i>	<i>1,000 bags</i>	<i>1,000 bags</i>
North America: ³				Africa—Con.			
Costa Rica	662	437	325	Ethiopia	23	192	215
Dominican Republic	254	213	207	Kenya	73	105	67
El Salvador	1,344	1,274	376	Madagascar	114	27	47
Guatemala	1,812	1,815	1,403	Rwanda	13	0	0
Honduras	670	394	154	Uganda	223	163	191
Mexico	3,042	2,947	2,516	Zaire	42	0	1
Other countries	124	89	95	Other countries	20	50	36
Total	7,908	7,169	5,076	Total	1,051	828	695
South America:				Asia and Oceania:			
Brazil	4,253	3,376	2,850	India	163	136	272
Colombia	4,852	2,957	2,372	Indonesia	581	542	558
Ecuador	753	671	969	Papua, New Guinea	52	78	68
Peru	526	158	249	Philippines	13	6	78
Venezuela	104	444	295	Thailand	926	1,060	676
Other countries	1	1	1	Other countries	95	83	303
Total	10,489	7,608	6,736	Total	1,830	1,906	1,955
Africa:				Other countries	394	500	451
Burundi	92	13	14	Grand total	21,673	18,011	14,913
Cameroon	44	4	10				
Cote d'Ivoire	407	273	114				

¹ Green coffee only; does not include roasted or soluble. Bags of 60 kilograms each (132.276 lbs.). ² Preliminary.
³ Includes Central America.

FAS, Horticultural and Tropical Products Division, (202) 720-3423. Compiled from reports of the U.S. Department of Commerce.

Table 339.—Coffee: Area, yield, production, marketing year average price, and value, Hawaii, 1986–87 to 1995–96

Season	Area harvested	Yield per harvested acre	Production	Price per pound	Value
	<i>Acres</i>	<i>1,000 pounds</i>	<i>1,000 pounds</i>	<i>Dollars</i>	<i>1,000 dollars</i>
1986–87	2,000	1.5	3,000	2.90	8,700
1987–88	2,050	.9	1,800	2.70	4,860
1988–89	2,150	.9	2,000	3.30	6,600
1989–90	2,300	1.4	3,200	3.90	12,480
1990–91	2,400	1.2	2,800	2.70	7,560
1991–92	2,400	1.2	2,800	1.75	4,900
1992–93	4,000	.6	2,400	1.70	4,080
1993–94	4,200	.7	2,900	2.25	6,525
1994–95	4,400	1.0	4,300	2.80	12,040
1995–96 ¹	5,400	1.0	5,200	2.75	14,300

¹ Preliminary.
 NASS, Crops Branch, (202) 720-2127.

Table 340.—Coffee: Exports from principal producing countries, 1992–94 ¹

Continent and country of origin	1992	1993	1994 ²	Continent and country of origin	1992	1993	1994 ²
	<i>1,000 bags</i>	<i>1,000 bags</i>	<i>1,000 bags</i>		<i>1,000 bags</i>	<i>1,000 bags</i>	<i>1,000 bags</i>
North America:				Africa—Con.			
Costa Rica	2,431	2,364	2,106	Ethiopia	734	1,167	1,475
Dominican Republic	369	331	331	Guinea	58	15	27
El Salvador	2,120	2,947	2,076	Cote d'Ivoire	4,546	4,033	2,479
Guatemala	3,328	3,751	3,274	Kenya	1,384	1,439	1,352
Haiti	166	159	103	Madagascar	736	628	433
Honduras	1,960	1,705	1,718	Rwanda	645	481	30
Mexico	3,332	3,510	2,701	Tanzania	828	1,037	632
Nicaragua	636	476	622	Togo	313	218	166
Total	14,342	15,243	12,931	Uganda	1,961	1,829	3,192
South America:				Zaire	954	920	728
Brazil	18,793	17,834	17,302	Zimbabwe	162	70	24
Colombia	16,564	13,568	11,765	Total	14,792	13,129	11,868
Ecuador	1,273	1,599	2,145	Asia and Oceania:			
Peru	1,061	610	870	India	1,816	2,108	2,483
Venezuela	136	525	386	Indonesia	4,604	5,662	4,464
Total	37,827	34,136	32,468	Papua New Guinea	917	1,055	1,159
Africa:				Philippines	41	35	126
Angola	80	39	8	Thailand	1,164	982	1,120
Burundi	646	418	508	Vietnam	1,938	2,072	2,709
Cameroon	1,645	698	676	Total	10,480	11,914	12,061
Central African Republic ..	100	137	138	Grand total	77,441	74,422	69,328

¹ Mostly green coffee, some countries include soluble or roasted. Bags of 60 kilograms each (132.276 lbs.). ² Preliminary.

FAS, Horticultural and Tropical Products Division, (202) 720–3423. International Coffee Organization.

Table 341.—Tea: Exports from principal producing countries, 1991–93

Continent and country	1991	1992	1993 ¹	Continent and country	1991	1992	1993 ¹
	<i>Metric tons</i>	<i>Metric tons</i>	<i>Metric tons</i>		<i>Metric tons</i>	<i>Metric tons</i>	<i>Metric tons</i>
South America:				Asia and Oceania:			
Argentina	36,029	36,529	43,549	Iran	1,500	1,000	1,500
Brazil	6,600	7,000	7,000	Bangladesh	25,381	27,160	32,000
Ecuador	900	1,200	900	China	184,872	175,526	201,454
Peru	200	200	200	Taiwan	5,317	5,296	5,142
Total	43,729	44,929	51,649	India	201,720	173,358	177,935
Africa:				Indonesia	110,218	121,243	123,926
Burundi	4,804	5,651	5,760	Japan	289	290	328
Kenya	175,557	166,518	188,390	Malaysia	1,000	1,000	1,000
Malawi	33,973	37,983	34,000	Papua New Guinea	3,733	5,648	5,674
Mauritius	4,502	5,461	4,398	Sri Lanka	210,823	177,801	209,942
Mozambique	800	1,000	1,000	Turkey	2,314	5,048	8,000
Rwanda	11,013	13,034	7,000	Vietnam	10,002	11,000	11,500
Tanzania	17,494	17,835	19,387	Total	757,169	704,370	778,401
Uganda	7,050	7,817	10,056	Grand total ...	1,069,395	1,012,687	1,111,041
Zaire	2,000	2,000	2,000				
Zimbabwe	11,304	6,089	9,000				
Total	268,497	263,388	280,991				

¹ Preliminary.

FAS, Horticultural and Tropical Products Division, (202) 720–3423. International Tea Committee.

Table 342.—Tea: United States imports by country of origin, 1992–94

Continent and country	1992	1993	1994 ¹	Continent and country	1992	1993	1994 ¹
	<i>Metric tons</i>	<i>Metric tons</i>	<i>Metric tons</i>		<i>Metric tons</i>	<i>Metric tons</i>	<i>Metric tons</i>
North America:				Asia and Oceania—Con.			
Canada	409	213	160	Hong Kong	391	388	378
Total	409	213	160	India	2,893	2,912	3,705
Central and South America: ²				Indonesia	16,350	13,247	15,011
Argentina	22,879	21,267	25,121	Japan	170	162	184
Brazil	3,679	2,683	3,843	Papua New Guinea	831	1,126	1,087
Ecuador	584	638	921	Sri Lanka	3,907	3,750	4,842
Other countries	85	292	176	Other countries	235	94	1,295
Total	27,227	24,880	30,061	Total	49,308	46,064	51,475
Europe:				Africa:			
Germany	4,408	3,961	4,481	Kenya	4,357	3,938	3,406
Netherlands	811	937	640	Malawi	2,650	3,146	3,865
United Kingdom	1,016	779	493	Mozambique	159	0	50
Other countries	103	168	186	Rwanda	264	159	11
Total	6,338	5,845	5,800	South Africa	181	179	665
Asia and Oceania:				Tanzania	152	175	429
China	24,026	24,035	24,549	Other countries	323	293	266
Taiwan	505	350	424	Total	8,086	7,890	8,692
				Grand total	91,365	84,892	96,184

¹ Preliminary. ² Includes Mexico.

FAS, Horticultural and Tropical Products Division, (202) 720-3423. Compiled from reports of the U.S. Department of Commerce.

Table 343.—Mushrooms: Area, production, marketing year average price, and value, United States, 1985/86–1994/95¹

Year ²	Area in production	Production	Price per pound	Value of production		
				Total	Fresh market	Processing
	<i>1,000 sq. ft.</i>	<i>1,000 pounds</i>	<i>Cents</i>	<i>1,000 dollars</i>	<i>1,000 dollars</i>	<i>1,000 dollars</i>
1985–86	129,565	587,956	83.9	493,093	404,914	88,179
1986–87	129,496	611,894	84.7	518,433	429,812	88,621
1987–88	130,527	631,819	86.1	544,300	444,967	99,333
1988–89	132,659	667,759	89.3	596,338	474,675	121,663
1989–90	137,861	714,992	90.2	644,738	512,055	132,683
1990–91	139,922	749,151	86.5	647,915	501,967	145,948
1991–92	138,148	746,832	87.5	653,841	494,340	159,501
1992–93	141,909	776,357	86.2	669,398	521,566	147,832
1993–94	135,703	750,799	91.6	687,673	532,863	154,810
1994–95	139,594	780,978	93.6	730,710	559,951	170,759

¹ Area, production, price, and value estimates are primarily Agaricus, but also include specialty mushrooms through 1986–87. Statistics after 1986–87 are for Agaricus only. ² Marketing year begins July 1 and ends June 30 the following year.

NASS, Crops Branch, (202) 720-2127.

Table 344.—Mushrooms, canned: United States imports by country of origin, 1990–94

Country	1990 ¹	1991 ¹	1992 ¹	1993 ¹	1994 ¹
	<i>Metric tons</i>	<i>Metric tons</i>	<i>Metric tons</i>	<i>Metric tons</i>	<i>Metric tons</i>
Canada	1,277	2,193	123	123	282
Chile	0	101	937	1,427	4,802
China, Peoples Republic of	5,846	14,117	11,715	11,944	17,261
Columbia	0	0	0	0	874
France	196	152	499	427	297
Hong Kong	10,059	11,826	9,616	8,143	11,423
India	82	603	1,173	1,030	2,160
Indonesia	8,629	11,791	14,892	12,136	14,210
Malaysia	21	150	423	382	875
Mexico	78	0	440	2,478	2,167
Netherlands	1,095	846	1,114	612	5,703
Spain	3,586	812	512	266	1,393
Taiwan	10,383	8,275	5,377	2,139	2,029
Thailand	2,074	2,828	2,693	2,735	2,277
Other	3,204	1,198	599	417	235
Total	46,530	54,892	50,113	44,259	65,988

¹ Includes straw mushrooms.

FAS, Horticultural and Tropical Products Division, (202) 720-3423. Compiled from reports of the U.S. Department of Commerce.

Table 345.—Specialty mushrooms: Number of growers, total production, volume of sales, price per pound, and value of sales, July 1–June 30, 1992–93/1994–95¹

Year and variety	Growers	All sales			
		Total production ²	Volume of sales ³	Price per pound	Value of sales
	<i>Number</i>	<i>1,000 pounds</i>	<i>1,000 pounds</i>	<i>Dollars</i>	<i>1,000 dollars</i>
1992–93					
Shiitake	2,955	2,752	3.88	10,677
Oyster	1,089	1,000	2.58	2,579
Other	961	817	3.79	3,100
US	174	5,005	4,569	3.58	16,356
1993–94					
Shiitake	5,762	5,585	3.70	20,672
Oyster	2,089	1,946	2.50	4,856
Other	993	906	3.60	3,263
US	171	8,844	8,437	3.41	28,791
1994–95					
Shiitake	5,498	5,246	3.83	20,081
Oyster	1,974	1,711	2.63	4,505
Other	1,154	1,035	3.54	3,668
US ⁴	192	8,626	7,992	3.54	28,254

¹ Specialty mushroom estimates represent growers who have at least 200 natural wood logs or commercial indoor growing area. ² Total production includes all fresh market and processing sales plus amount harvested but not sold (shrinkage, cullage, dumped, etc.). ³ Virtually all specialty mushroom sales are for fresh market. ⁴ States reporting in 1994–95: AR, CA, CO, CT, FL, HI, ID, IL, IA, KY, MA, MI, MN, MO, MS, NC, NY, OH, OR, PA, SC, TN, VA, WA, WI, WV.

NASS, Crops Branch, (202) 720-2127.

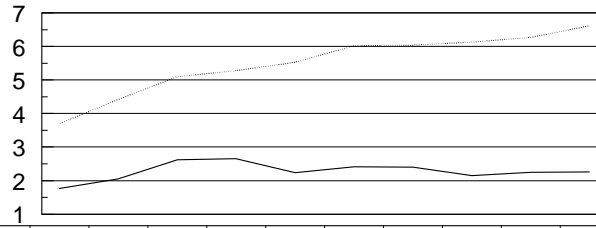
Table 346.—Cut flowers: Sales and value, United States, 1985–94

Year	Standard carnations			Miniature carnations		
	1,000 Blooms	Cents	1,000 dollars	1,000 Bunches	Dollars	1,000 dollars
1985	289,985	15.9	46,156	11,458	1.68	18,883
1986	258,814	15.1	39,033	11,472	1.44	16,471
1987	274,865	14.7	40,479	13,258	1.43	18,995
1988	290,047	14.5	42,154	13,233	1.51	20,001
1989	248,661	14.6	36,223	12,541	1.42	17,748
1990	223,956	15.6	34,943	11,733	1.46	17,186
1991	197,580	16.5	32,536	11,163	1.44	16,120
1992	213,599	14.4	30,777	9,706	1.51	14,703
1993	194,876	14.0	27,207	8,974	1.35	12,107
1994	168,634	14.2	23,890	7,966	1.27	10,132
Year	Standard chrysanthemums			Pompon chrysanthemums		
	1,000 Blooms	Cents	1,000 dollars	1,000 Bunches	Dollars	1,000 dollars
1985	60,162	42.1	25,345	36,845	1.22	44,805
1986	43,657	35.8	15,625	32,666	1.10	35,822
1987	42,752	35.7	15,256	29,088	1.31	38,083
1988	44,108	32.9	14,505	30,021	1.27	38,274
1989	39,275	36.2	14,214	22,919	1.28	29,295
1990	19,003	39.8	7,559	19,327	1.31	25,296
1991	22,138	36.4	8,053	20,748	1.19	24,788
1992	19,775	39.3	7,769	15,436	1.16	17,971
1993	19,730	43.3	8,541	11,025	1.42	15,695
1994	15,286	48.7	7,449	12,111	1.35	16,323
Year	Hybrid Tea roses			Sweetheart roses		
	1,000 Blooms	Cents	1,000 dollars	1,000 Blooms	Cents	1,000 dollars
1985	370,497	34.0	125,925	106,529	24.6	26,213
1986	354,702	35.3	125,038	107,475	24.3	26,166
1987	438,184	34.8	152,646	126,437	23.8	30,133
1988	440,627	35.3	155,385	124,813	24.3	30,370
1989	481,164	35.1	169,002	106,319	25.2	26,775
1990	481,587	34.8	167,457	99,675	26.5	26,449
1991	463,890	34.0	157,551	88,748	26.1	23,199
1992	458,974	33.9	155,738	74,588	25.2	18,775
1993	429,020	33.8	144,823	78,270	25.0	19,545
1994	400,459	34.5	138,029	65,434	25.5	16,686
Year	Gladioli			Other cut flowers		
	1,000 Spikes	Cents	1,000 dollars			1,000 dollars
1985	158,996	16.1	25,555	58,848
1986	170,788	15.5	26,534	75,137
1987	200,526	16.2	32,446	111,435
1988	199,273	17.0	33,935	123,230
1989	175,153	19.4	34,061	155,213
1990	163,644	20.2	33,101	155,729
1991	165,510	21.1	34,941	174,342
1992	187,643	20.0	37,494	175,228
1993	165,683	20.3	33,675	162,318
1994	189,220	20.7	39,187	188,618

¹ Equivalent wholesale value of all sales.
NASS, Crops Branch, (202) 720-2127.

Value of Citrus and Noncitrus Fruit Production, 1986-95

Billion \$

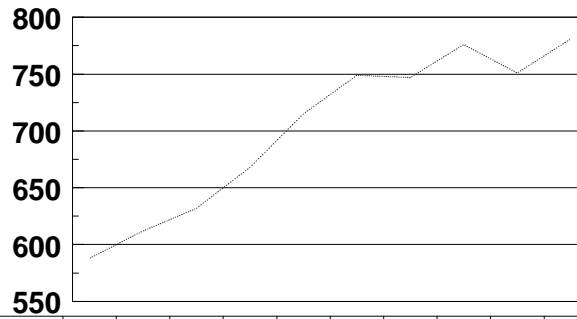


Year	86	87	88	89	90	91	92	93	94	95
Citrus	1.77	2.05	2.62	2.66	2.24	2.41	2.40	2.15	2.25	2.26
Noncitrus	3.70	4.42	5.10	5.28	5.53	6.02	6.04	6.13	6.27	6.62

NASS

Mushroom Production, 1986-95

Million Pounds



Year	86	87	88	89	90	91	92	93	94	95
Production	588	612	632	668	715	749	747	776	751	781

NASS