

## CHAPTER VIII

# DAIRY AND POULTRY STATISTICS

Dairy statistics in this chapter include series relating to many phases of production, movement, prices, stocks, and consumption of milk and its products. Two series of number of milk cows on farms are included in this publication. One series is an inventory number of a specific classification estimated as one of the major groups making up the total cattle population on January 1. The other series identified as "milk cows" is an annual average number of milk cows during the year (excluding any not yet fresh) and is used in estimating milk production.

In comparing the several series of milk prices, it is important to note that prices received by farmers for all whole milk sold are for milk or milkfat content as actually sold, while certain prices paid by dealers for milk for fluid purposes or for specified manufacturing purposes may be quoted on a 3.5 percent butterfat basis, or for some types of manufacturing milk on the test of the milk used for that particular purpose.

Poultry and poultry products statistics include inventory numbers of chickens by classes; the production, disposition, cash receipts, and gross income from chickens and eggs; poultry and egg receipts at principal markets; commercial broiler production; turkey production, disposition, and gross income; poultry and eggs under Federal inspection; and the National Poultry Improvement Plan. Estimates relating to inventories, production, and income exclude poultry and eggs produced on places not classified as farms.

**Table 8-1.—Milk cows and heifers: Number that have calved and heifers 500 pounds and over kept for milk cow replacements, United States, Jan. 1, 1990–99**

Year	Milk cows and heifers that have calved	Heifers 500 pounds and over kept for milk cow replacements
	<i>Thousands</i>	<i>Thousands</i>
1990 .....	10,015	4,171
1991 .....	9,966	4,093
1992 .....	9,728	4,131
1993 .....	9,658	4,176
1994 .....	9,507	4,125
1995 .....	9,482	4,121
1996 .....	9,420	4,090
1997 .....	9,318	4,058
1998 .....	9,199	3,986
1999 <sup>1</sup> .....	9,143	4,060

<sup>1</sup> Preliminary.

NASS, Livestock and Economics Branch, (202) 720-6146.

**Table 8-2.—Milk cows and heifers: Number that have calved and heifers 500 pounds and over kept for milk cow replacements, by States, Jan. 1, 1998 and 1999**

State	Milk cows and heifers that have calved		Heifers 500 pounds and over kept for milk cow replacements		State	Milk cows and heifers that have calved		Heifers 500 pounds and over kept for milk cow replacements	
	1998	1999 <sup>1</sup>	1998	1999 <sup>1</sup>		1998	1999 <sup>1</sup>	1998	1999 <sup>1</sup>
	<i>Thousands</i>	<i>Thousands</i>	<i>Thousands</i>	<i>Thousands</i>		<i>Thousands</i>	<i>Thousands</i>	<i>Thousands</i>	<i>Thousands</i>
AL .....	28	27	11	9	NE .....	70	72	30	30
AK .....	0.9	0.9	0.3	0.3	NV .....	26	26	10	8
AZ .....	130	132	26	23	NH .....	20	21	8.0	10.0
AR .....	51	51	20	20	NJ .....	19	18	6	7
CA .....	1,400	1,440	670	710	NM .....	216	218	50	55
CO .....	84	83	45	45	NY .....	700	702	310	310
CT .....	30	28	13	12	NC .....	78	73	30	30
DE .....	10	10	2.6	2.7	ND .....	54	50	20	15
FL .....	160	157	40	40	OH .....	265	260	115	125
GA .....	96	90	32	29	OK .....	91	92	40	30
HI .....	9	9	4	4	OR .....	88	88	50	55
ID .....	280	302	135	135	PA .....	625	619	275	280
IL .....	130	125	65	60	RI .....	2.1	2.2	0.8	0.7
IN .....	135	137	60	62	SC .....	25	24	10	10
IA .....	225	220	100	120	SD .....	101	102	25	35
KS .....	79	84	40	45	TN .....	110	100	50	45
KY .....	145	135	55	55	TX .....	370	340	100	110
LA .....	66	64	16	15	UT .....	90	95	50	43
ME .....	41	43	19.0	20.0	VT .....	163	162	60	68
MD .....	86	86	29	29	VA .....	125	122	60	63
MA .....	27	24	10.0	13.0	WA .....	250	248	93	98
MI .....	300	300	140	145	WV .....	18	18	7	5
MN .....	555	545	290	290	WI .....	1,380	1,370	660	640
MS .....	46	39	19	17	WY .....	6	6	1	1
MO .....	175	165	75	75	US .....	9,199.0	9,143.1	3,985.7	4,059.7
MT .....	18	18	8	10					

<sup>1</sup> Preliminary.

NASS, Livestock and Economics Branch, (202) 720-6146.

**Table 8-3.—Milk-feed price ratios: All milk-price; dairy feed, 16%; Milk-feed price ratios and value per 100 pounds of grain and concentrate rations fed to milk cows, United States, annual 1988-97**

Year	All milk price cwt.	16% dairy feed price cwt <sup>1</sup>	Milk-feed price ratio <sup>2</sup>	Value per 100 pounds of grain and concentrates fed to milk cows
	<i>Dollars</i>	<i>Dollars</i>	<i>Pounds</i>	<i>Dollars</i>
1988 .....	12.26	9.10	2.63	7.74
1989 .....	13.56	9.45	2.70	8.20
1990 .....	13.74	9.10	2.82	7.98
1991 .....	12.27	8.80	2.74	7.73
1992 .....	13.15	8.90	3.01	7.69
1993 .....	12.84	9.00	2.80	7.78
1994 .....	13.01	9.20	2.65	7.98
1995 .....	12.78	8.70	2.59	7.88
1996 .....	14.75	11.25	2.45	9.17
1997 .....	13.36	10.75	2.38	( <sup>3</sup> )

<sup>1</sup> Annual average prior to 1995. April average price for commercially prepared 16% dairy ration. <sup>2</sup> Annual ratios based on average of monthly ratios. Pounds of 16 % mixed dairy feed equal in value to one pound of whole milk. Effective January 1995, prices of commercial prepared feeds are based on current U.S. prices received for corn (51 lbs), soybeans (8 lbs), and alfalfa hay (41 lbs). <sup>3</sup> Discontinued.

NASS, Livestock and Economics Branch, (202) 720-3570.

**Table 8-4.—Milk cows: Number of operations, 1997–98, and inventory, Jan. 1, 1998–99, by selected States and United States <sup>1</sup>**

State	Operations with milk cows <sup>2</sup>		January 1 milk cow inventory	
	1997	1998	1998	1999
	<i>Number</i>	<i>Number</i>	<i>1,000 head</i>	<i>1,000 head</i>
AL .....	450	380	28	27
AK .....	30	30	0.9	0.9
AZ .....	250	250	130	132
AR .....	1,300	1,200	51	51
CA .....	2,800	2,700	1,400	1,440
CO .....	900	900	84	83
CT .....	350	350	30	28
DE .....	130	130	10	10
FL .....	650	650	160	157
GA .....	1,000	950	96	90
HI .....	50	50	9	9
ID .....	1,400	1,300	280	302
IL .....	2,400	2,300	130	125
IN .....	3,400	3,300	135	137
IA .....	4,500	4,300	225	220
KS .....	1,500	1,400	79	84
KY .....	3,600	3,400	145	135
LA .....	900	800	66	64
ME .....	700	700	41	43
MD .....	1,100	1,100	86	86
MA .....	450	450	27	24
MI .....	4,200	4,000	300	300
MN .....	10,500	9,700	555	545
MS .....	650	600	46	39
MO .....	4,500	4,300	175	165
MT .....	750	700	18	18
NE .....	1,500	1,400	70	72
NV .....	150	150	26	26
NH .....	300	300	20	21
NJ .....	350	300	19	18
NM .....	600	500	216	218
NY .....	9,000	8,700	700	702
NC .....	1,200	1,100	78	73
ND .....	1,300	1,200	54	50
OH .....	6,000	5,500	265	260
OK .....	2,200	2,100	91	92
OR .....	1,100	1,000	88	88
PA .....	11,300	10,900	625	619
RI .....	40	40	2.1	2.2
SC .....	350	300	25	24
SD .....	2,000	1,800	101	102
TN .....	2,100	2,000	110	100
TX .....	3,500	3,200	370	340
UT .....	900	900	90	95
VT .....	2,000	1,900	163	162
VA .....	1,800	1,800	125	122
WA .....	1,400	1,300	250	248
WV .....	800	800	18	18
WI .....	25,000	23,000	1,380	1,370
WY .....	350	300	6	6
US .....	123,700	116,430	9,199.0	9,143.1

<sup>1</sup>An operation is any place having one or more milk cows on hand at any time during the year. <sup>2</sup>Included in operations with cattle.

**Table 8-5.—Milk cows: Number of operations by size group, selected States, and United States, 1997–98<sup>1</sup>**

State	Operations having											
	1–29 Head		30–49 Head		50–99 Head		100–199 Head		200–499 Head		500+ Head	
	1997	1998	1997	1998	1997	1998	1997	1998	1997	1998	1997	1998
	<i>Number</i>	<i>Number</i>	<i>Number</i>	<i>Number</i>	<i>Number</i>	<i>Number</i>	<i>Number</i>	<i>Number</i>	<i>Number</i>	<i>Number</i>	<i>Number</i>	<i>Number</i>
AZ .....	130	130	.....	.....	10	10	10	10	20	20	80	80
CA .....	500	420	90	90	120	110	290	270	750	750	1,050	1,060
CO .....	610	600	40	30	50	50	70	80	80	90	50	50
FL .....	400	400	10	10	30	32	40	38	75	75	95	95
GA .....	520	500	20	20	120	100	200	190	110	110	30	30
ID .....	400	350	160	140	270	250	250	240	190	180	130	140
IL .....	530	500	500	460	1,000	960	320	330	50	50	.....	.....
IN .....	1,900	1,900	550	520	630	560	260	270	50	40	10	10
IA .....	1,300	1,200	1,200	1,200	1,500	1,400	420	390	75	105	5	5
KY .....	1,600	1,500	700	670	940	900	300	280	55	45	5	5
MD .....	220	230	180	180	425	420	220	220	49	45	6	5
MI .....	1,100	950	900	900	1,100	1,100	850	810	215	205	35	35
MN .....	1,900	1,600	3,800	3,500	3,700	3,500	850	800	230	260	20	40
MO .....	1,900	1,900	830	780	1,100	990	600	570	70	60	.....	.....
NM .....	440	350	.....	.....	10	5	10	10	20	20	120	115
NY .....	1,700	1,600	1,900	1,800	3,600	3,500	1,300	1,300	400	390	100	110
NC .....	600	530	65	60	210	200	230	220	80	75	15	15
OH .....	3,100	2,600	800	830	1,400	1,400	580	550	110	110	10	10
OR .....	590	550	40	30	140	110	200	170	100	110	30	30
PA .....	2,400	2,200	3,800	3,700	3,800	3,700	1,100	1,050	190	235	10	15
TN .....	1,000	950	260	210	440	440	300	300	90	90	10	10
TX .....	1,600	1,500	200	200	400	400	600	500	500	400	200	200
UT .....	320	340	70	60	165	165	210	190	110	120	25	25
VT .....	200	190	410	320	920	900	350	350	100	115	20	25
VA .....	770	750	90	100	440	450	390	380	100	110	10	10
WA .....	540	450	70	45	130	145	290	280	250	255	120	125
WI .....	4,600	4,300	8,500	7,300	9,400	8,900	2,000	1,950	450	490	50	60
Oth Sts ...	8,200	7,200	2,100	2,000	3,800	3,580	1,800	2,000	600	590	100	110
US .....	39,070	35,690	27,285	25,155	35,850	34,277	14,040	13,748	5,119	5,145	2,336	2,415

<sup>1</sup> An operation is any place having one or more head of milk cows on hand at any time during the year.  
NASS, Livestock and Economics Branch, (202) 720–6146.

**Table 8-6.—Milk cows: Percent of inventory by size group, selected States, and United States, 1997–98<sup>1</sup>**

State	Inventory on operations having											
	1–29 head		30–49 head		50–99 head		100–199 head		200–499 head		500+ head	
	1997	1998	1997	1998	1997	1998	1997	1998	1997	1998	1997	1998
	<i>Percent</i>	<i>Percent</i>	<i>Percent</i>	<i>Percent</i>	<i>Percent</i>	<i>Percent</i>	<i>Percent</i>	<i>Percent</i>	<i>Percent</i>	<i>Percent</i>	<i>Percent</i>	<i>Percent</i>
AZ .....	0.4	0.4	.....	.....	0.5	0.5	1.5	1.4	5.6	5.7	92.0	92.0
CA .....	0.1	0.1	0.3	0.3	0.7	0.7	3.4	3.4	16.5	17.5	79.0	78.0
CO .....	1.9	1.4	1.9	1.4	4.2	4.2	11.0	12.0	28.0	30.0	53.0	51.0
FL .....	0.5	0.5	0.2	0.2	1.3	1.5	4.0	3.8	17.0	15.0	77.0	79.0
GA .....	2.1	3.0	0.9	1.0	10.0	8.0	29.0	28.0	29.0	31.0	29.0	29.0
ID .....	0.9	0.7	2.1	1.8	6.0	5.5	12.0	12.0	19.0	19.0	60.0	61.0
IL .....	4.0	4.0	12.0	11.0	46.0	46.0	28.0	29.0	10.0	10.0	.....	.....
IN .....	14.0	14.0	17.0	18.0	33.0	31.0	24.0	25.0	8.0	7.0	4.0	5.0
IA .....	8.0	8.0	18.0	18.0	40.0	38.0	23.0	22.0	9.0	12.0	2.0	2.0
KY .....	8.0	8.0	17.0	18.0	40.0	40.0	25.0	24.0	8.0	8.0	2.0	2.0
MD .....	2.5	2.5	7.5	6.9	35.0	36.0	34.0	34.0	13.0	13.0	8.0	7.6
MI .....	5.0	4.5	11.0	10.5	24.0	25.0	33.0	32.0	17.0	18.0	10.0	10.0
MN .....	6.0	5.8	24.0	22.0	40.0	40.0	17.0	16.0	11.0	12.0	2.0	4.2
MO .....	6.1	7.0	15.0	16.0	34.0	33.0	36.0	36.0	8.9	8.0	.....	.....
NM .....	0.7	0.4	.....	.....	0.4	0.2	0.7	0.7	3.2	2.7	95.0	96.0
NY .....	2.5	2.5	10.5	10.5	35.0	34.0	27.0	26.0	14.0	15.0	11.0	12.0
NC .....	1.5	1.5	2.5	2.5	17.0	17.0	38.0	37.0	27.0	27.0	14.0	15.0
OH .....	12.0	11.0	12.0	12.5	37.0	36.0	26.0	27.0	10.5	11.0	2.5	2.5
OR .....	1.2	1.0	1.8	1.3	12.0	9.7	28.0	25.0	30.0	34.0	27.0	29.0
PA .....	5.5	4.5	25.0	25.0	37.0	37.0	23.0	22.0	8.0	9.5	1.5	2.0
TN .....	2.7	3.0	7.3	6.4	28.0	28.0	36.0	37.0	21.0	20.0	5.0	5.6
TX .....	0.8	0.8	1.8	2.0	8.4	8.2	22.0	20.0	28.0	29.0	39.0	40.0
UT .....	1.3	1.5	2.7	2.5	13.0	13.0	29.0	26.0	35.0	37.0	19.0	20.0
VT .....	1.2	1.0	11.0	8.0	35.0	35.0	27.0	26.0	17.0	20.0	8.8	10.0
VA .....	5.0	6.0	3.0	3.0	27.0	26.0	39.0	38.0	21.0	22.0	5.0	5.0
WA .....	0.6	0.4	1.1	0.7	3.3	3.9	18.0	16.0	31.0	32.0	46.0	47.0
WI .....	4.5	4.8	24.0	21.0	43.0	43.0	18.0	18.0	7.7	10.0	2.8	3.2
Oth Sts .....	3.5	3.5	8.5	7.7	31.0	29.5	23.0	25.0	24.0	22.8	10.0	11.5
US .....	3.5	3.6	11.5	10.1	26.0	26.0	20.0	20.0	14.6	15.0	24.4	25.3

<sup>1</sup> Percents reflect average distribution of various probability surveys conducted during the year but are primarily on beginning-of-year and mid-year surveys.

NASS, Livestock and Economics Branch, (202) 720–6146.

**Table 8-7.—Official National Cooperative Dairy Herd Improvement Program test plans: Numbers of herds and cows and milk, fat, and protein production, United States, 1988–97**

Year	Herds	Cows	Cows per herd	Average production			Cows with protein information	Average protein production	Average protein production
				Milk	Fat	Fat			
	<i>Number</i>	<i>Number</i>	<i>Number</i>	<i>Pounds</i>	<i>Percent</i>	<i>Pounds</i>	<i>Percent</i>	<i>Percent</i>	<i>Pounds</i>
1988 ...	34,020	3,168,186	93.1	17,379	3.68	640	88	3.22	555
1989 ...	33,528	3,212,684	95.8	17,612	3.70	652	89	3.22	563
1990 ...	33,263	3,252,990	97.8	18,031	3.67	662	90	3.23	578
1991 ...	31,500	3,146,448	99.9	18,364	3.68	676	91	3.22	588
1992 ...	30,216	3,137,741	103.8	18,750	3.70	695	91	3.22	602
1993 ...	35,484	3,625,542	102.2	18,719	3.68	690	90	3.22	602
1994 ...	33,844	3,620,652	107.0	19,129	3.67	705	90	3.23	616
1995 ...	31,628	3,527,187	111.5	19,271	3.67	710	90	3.22	621
1996 ...	29,416	3,486,010	118.5	19,192	3.70	713	90	3.23	620
1997 ...	27,383	3,402,487	124.3	19,815	3.67	731	89	3.23	639

ARS, Animal Improvement Programs Laboratory, (301) 504-8334, rlaip1@lpsi.barc.usda.gov or http://aipl.arsusda.gov.

**Table 8-8.—Milk and milkfat production: Number of producing cows, production per cow, and total quantity produced, United States, 1988–97**

Year	Number of milk cows <sup>1</sup>	Production of milk and milkfat <sup>2</sup>				
		Per milk cow		Percentage of fat in all milk produced <sup>4</sup>	Total	
		Milk	Milkfat <sup>4</sup>		Milk	Milkfat <sup>4</sup>
	<i>Thousands</i>	<i>Pounds</i>	<i>Pounds</i>	<i>Percent</i>	<i>Million pounds</i>	<i>Million pounds</i>
1988 .....	10,224	14,185	521	3.67	145,034	5,329
1989 .....	10,046	14,323	528	3.68	143,893	5,302
1990 .....	9,993	14,782	539	3.65	147,721	5,390
1991 .....	9,826	15,031	550	3.66	147,697	5,405
1992 .....	9,688	15,570	573	3.68	150,582	5,550
1993 .....	9,581	15,722	575	3.66	150,636	5,513
1994 .....	9,494	16,179	592	3.66	153,602	5,622
1995 .....	9,466	16,405	601	3.66	155,292	5,684
1996 .....	9,372	16,433	608	3.69	154,006	5,683
1997 <sup>3</sup> .....	9,252	16,871	618	3.66	156,091	5,713

<sup>1</sup> Average number during year, excluding heifers not yet fresh. <sup>2</sup> Excludes milk sucked by calves. <sup>3</sup> Preliminary. <sup>4</sup> 1993–97 preliminary.

NASS, Livestock and Economics Branch, (202) 720-6146.

**Table 8-9.—Milk and milkfat production: Number of milk cows, production per cow, and total quantity produced, by States, 1996**

State	Number of milk cows <sup>1</sup>	Production of milk and milkfat <sup>2</sup>				
		Per milk cow		Percentage of fat in all milk produced	Total	
		Milk	Milkfat		Milk	Milkfat
	<i>Thousands</i>	<i>Pounds</i>	<i>Pounds</i>	<i>Percent</i>	<i>Million pounds</i>	<i>Million pounds</i>
AL .....	32	13,563	484	3.57	434	15.5
AK .....	0.8	16,875	587	3.48	13.5	0.5
AZ .....	121	20,446	734	3.59	2,474	88.8
AR .....	57	12,053	434	3.60	687	24.7
CA .....	1,276	20,267	742	3.66	25,861	946.5
CO .....	84	19,440	710	3.65	1,633	59.6
CT .....	30	16,633	610	3.67	499	18.3
DE .....	9.6	14,583	543	3.72	140	5.2
FL .....	156	15,391	551	3.58	2,401	86.0
GA .....	97	15,320	552	3.60	1,486	53.5
HI .....	9.4	13,723	472	3.44	129	4.4
ID .....	256	18,496	670	3.62	4,735	171.4
IL .....	154	15,162	572	3.77	2,335	88.0
IN .....	140	15,471	577	3.73	2,166	80.8
IA .....	249	15,197	567	3.73	3,784	141.1
KS .....	82	14,634	536	3.66	1,200	43.9
KY .....	153	12,157	440	3.62	1,860	67.3
LA .....	78	10,744	376	3.50	838	29.3
ME .....	40	16,200	595	3.67	648	23.8
MD .....	86	15,360	571	3.72	1,321	49.1
MA .....	27	16,296	609	3.74	440	16.5
MI .....	320	16,969	626	3.69	5,430	200.4
MN .....	598	15,786	590	3.74	9,440	353.1
MS .....	51	12,902	458	3.55	658	23.4
MO .....	179	13,659	497	3.64	2,445	89.0
MT .....	20	15,350	550	3.58	307	11.0
NE .....	69	15,217	568	3.73	1,050	39.2
NV .....	25	18,800	675	3.59	470	16.9
NH .....	19	17,053	636	3.73	324	12.1
NJ .....	22	13,500	495	3.67	297	10.9
NM .....	195	19,246	683	3.55	3,753	133.2
NY .....	702	16,396	607	3.70	11,510	425.9
NC .....	81	15,901	584	3.67	1,288	47.3
ND .....	62	12,968	479	3.69	804	29.7
OH .....	285	15,298	572	3.74	4,360	163.1
OK .....	97	12,938	468	3.62	1,255	45.4
OR .....	93	17,290	629	3.64	1,608	58.5
PA .....	644	16,522	613	3.71	10,640	394.7
RI .....	2	15,600	554	3.55	31.2	1.1
SC .....	26	14,654	539	3.68	381	14.0
SD .....	112	13,161	491	3.73	1,474	55.0
TN .....	116	13,940	503	3.61	1,617	58.4
TX .....	398	15,377	550	3.58	6,120	219.1
UT .....	91	17,000	617	3.63	1,547	56.2
VT .....	156	16,468	616	3.74	2,569	96.1
VA .....	126	14,325	520	3.63	1,805	65.5
WA .....	264	19,996	728	3.64	5,279	192.2
WV .....	20	12,600	470	3.73	252	9.4
WI .....	1,449	15,442	587	3.80	22,376	850.3
WY .....	6	14,050	511	3.64	84.3	3.1
US <sup>3</sup> .....	9,361	16,479	608	3.69	154,259	5,688.2

<sup>1</sup> Average number during year, excluding heifers not yet fresh. U.S. total may not add due to rounding. <sup>2</sup> Excludes milk sucked by calves. <sup>3</sup> Sum of parts may not equal due to rounding.

NASS, Livestock and Economics Branch, (202) 720-6146.

**Table 8-10.—Milk and milkfat production: Number of milk cows, production per cow, and total quantity produced, by States, 1997 (preliminary)**

State	Number of milk cows <sup>1</sup>	Production of milk and milkfat <sup>2</sup>				
		Per milk cow		Percentage of fat in all milk produced	Total	
		Milk	Milkfat		Milk	Milkfat
	<i>Thousands</i>	<i>Pounds</i>	<i>Pounds</i>	<i>Percent</i>	<i>Million pounds</i>	<i>Million pounds</i>
AL .....	31	13,484	484	3.59	418	15.0
AK .....	0.9	16,667	562	3.37	15.0	0.5
AZ .....	127	20,976	747	3.56	2,664	94.8
AR .....	53	12,094	427	3.53	641	22.6
CA .....	1,325	20,851	759	3.64	27,628	1,005.7
CO .....	84	19,988	720	3.60	1,679	60.4
CT .....	30	16,967	618	3.64	509	18.5
DE .....	10.1	15,149	556	3.67	153	5.6
FL .....	160	15,481	554	3.58	2,477	88.7
GA .....	97	15,340	549	3.58	1,488	53.3
HI .....	9.1	13,516	462	3.42	123	4.2
ID .....	272	19,092	676	3.54	5,193	183.8
IL .....	147	15,694	582	3.71	2,307	85.6
IN .....	140	15,636	577	3.69	2,189	80.8
IA .....	244	16,340	608	3.72	3,987	148.3
KS .....	81	15,864	579	3.65	1,285	46.9
KY .....	145	12,517	451	3.60	1,815	65.3
LA .....	77	10,312	358	3.47	794	27.6
ME .....	40	16,525	602	3.64	661	24.1
MD .....	86	15,488	568	3.67	1,332	48.9
MA .....	26	16,731	619	3.70	435	16.1
MI .....	306	17,680	645	3.65	5,410	197.5
MN .....	583	15,798	589	3.73	9,210	343.5
MS .....	47	13,489	479	3.55	634	22.5
MO .....	168	14,077	512	3.64	2,365	86.1
MT .....	19	15,526	550	3.54	295	10.4
NE .....	69	15,072	556	3.69	1,040	38.4
NV .....	26.0	18,346	659	3.59	477	17.1
NH .....	19	17,263	651	3.77	328	12.4
NJ .....	21	14,238	515	3.62	299	10.8
NM .....	202	19,856	695	3.50	4,011	140.4
NY .....	699	16,519	606	3.67	11,547	423.8
NC .....	76	16,566	603	3.64	1,259	45.8
ND .....	55	12,764	467	3.66	702	25.7
OH .....	280	15,768	582	3.69	4,415	162.9
OK .....	96	13,281	475	3.58	1,275	45.6
OR .....	90	17,889	653	3.65	1,610	58.8
PA .....	639	16,811	609	3.62	10,742	388.9
RI .....	2	16,000	560	3.50	32.0	1.1
SC .....	26	15,077	552	3.66	392	14.3
SD .....	105	13,181	488	3.70	1,384	51.2
TN .....	111	14,360	513	3.57	1,594	56.9
TX .....	385	14,982	536	3.58	5,768	206.5
UT .....	91	16,923	609	3.60	1,540	55.4
VT .....	157	16,567	616	3.72	2,601	96.8
VA .....	122	15,238	542	3.56	1,859	66.2
WA .....	264	20,095	731	3.64	5,305	193.1
WV .....	18	14,778	542	3.67	266	9.8
WI .....	1,393	16,057	605	3.77	22,368	843.3
WY .....	6	13,450	488	3.63	80.7	2.9
US <sup>3</sup> .....	9,258	16,915	618	3.66	156,602	5,724.8

<sup>1</sup> Average number during year, excluding heifers not yet fresh. U.S. total may not add due to rounding. <sup>2</sup> Excludes milk sucked by calves. <sup>3</sup> Sum of parts may not equal due to rounding.

**Table 8-11.—Milk: Quantities used and marketed by producers, by States, 1997 (preliminary)**

State	Milk used where produced			Milk marketed by producers		
	Fed to calves <sup>1</sup>	Used for milk, cream, and butter	Total	Sold to plants and dealers <sup>2</sup>	Sold directly to consumers <sup>3,4</sup>	Total
	<i>Million pounds</i>	<i>Million pounds</i>	<i>Million pounds</i>	<i>Million pounds</i>	<i>Million pounds</i>	<i>Million pounds</i>
AL	3	1	4	414		414
AK	0.5	0.4	0.9	13.9	0.2	14.1
AZ	10	2	12	2,652		2,652
AR	11	7	18	623		623
CA	41	7	48	27,039	541	27,580
CO	38	8	46	1,590	43	1,633
CT	6	1	7	488	14	502
DE	1		1	152		152
FL	4	1	5	2,472		2,472
GA	12	1	13	1,465	10	1,475
HI	2.5	1.2	3.7	119.3		119.3
ID	35	5	40	5,153		5,153
IL	20	3	23	2,284		2,284
IN	30	10	40	2,149		2,149
IA	35	18	53	3,934		3,934
KS	13	1	14	1,271		1,271
KY	31	10	41	1,774		1,774
LA	12	3	15	779		779
ME	7	1	8	645	8	653
MD	7	3	10	1,322		1,322
MA	5	1	6	413	16	429
MI	41	4	45	5,350	15	5,365
MN	95	15	110	9,100		9,100
MS	3	1	4	630		630
MO	30	6	36	2,329		2,329
MT	7	4	11	284		284
NE	15	10	25	1,015		1,015
NV	5	1	6	471		471
NH	4	1	5	323		323
NJ	4	1	5	295		295
NM	13	6	19	3,946	46	3,992
NY	130	25	155	11,380	12	11,392
NC	12	8	20	1,239		1,239
ND	15	2	17	685		685
OH	22	8	30	4,385		4,385
OK	15	2	17	1,258		1,258
OR	25	5	30	1,515	65	1,580
PA	75	11	86	10,394	262	10,656
RI	0.4		0.4	31.6		31.6
SC	2	1	3	387	2	389
SD	12	2	14	1,370		1,370
TN	8	1	9	1,585		1,585
TX	19	2	21	5,747		5,747
UT	18	2	20	1,473	47	1,520
VT	25	5	30	2,565	6	2,571
VA	13	2	15	1,844		1,844
WA	30	1	31	5,081	193	5,274
WV	2	1	3	263		263
WI	200	51	251	22,117		22,117
WY	1.4	0.2	1.6	79.1		79.1
US <sup>5</sup>	1,166	263	1,429	153,894	1,280	155,174

<sup>1</sup>Excludes milk sucked by calves. <sup>2</sup>Includes milk produced by dealers' own herds and small amounts sold directly to consumers. Also included equivalent amounts of milk for cream sold to plants and dealers. <sup>3</sup>Sales directly to consumers by producers who sell only milk from their own herds. Also includes milk produced by institutional herds. <sup>4</sup>For states not published, sales included in milk sold to plants. <sup>5</sup>Sum of parts may not equal total due to rounding.

NASS, Livestock and Economics Branch, (202) 720-6146.



**Table 8-12.—Milk: Cows, yield per cow, and production in specified countries, 1995–97**

Country and continent	Milk cows			Per cow yield			Milk production		
	1995	1996	1997	1995	1996	1997	1995	1996	1997
	1,000 head	1,000 head	1,000 head	Kilo grams	Kilo grams	Kilo grams	1,000 metric tons	1,000 metric tons	1,000 metric tons
North America:									
Canada .....	1,244	1,237	1,253	6,367	6,378	6,464	7,920	7,990	8,100
Mexico .....	6,440	6,440	6,500	1,149	1,178	1,208	7,399	7,586	7,850
United States .....	9,458	9,361	9,258	7,454	7,475	7,673	70,500	69,971	71,035
Total .....	17,142	17,038	17,011	.....	.....	.....	85,819	85,447	86,985
South America:									
Argentina .....	2,350	2,300	2,400	3,617	3,870	3,775	8,500	8,900	9,060
Brazil .....	17,500	17,100	17,067	1,050	1,139	1,207	18,375	19,480	20,600
Chile .....	770	720	725	2,474	2,753	2,913	1,905	1,982	2,112
Peru .....	580	553	575	1,147	1,320	1,478	665	730	850
Venezuela .....	660	608	600	1,970	1,974	1,917	1,300	1,200	1,150
Total .....	21,860	21,281	21,367	.....	.....	.....	30,745	32,292	33,772
European Union:									
Austria .....	747	698	685	4,171	4,304	4,467	3,116	3,004	3,060
Belgium-Luxembourg .....	720	682	657	5,063	5,397	5,571	3,645	3,681	3,660
Denmark .....	703	712	697	6,647	6,594	6,647	4,673	4,695	4,633
Finland .....	413	399	393	5,988	6,093	6,260	2,473	2,431	2,460
France .....	4,754	4,672	4,562	5,346	5,369	5,471	25,413	25,083	24,957
Germany .....	5,273	5,229	5,195	5,428	5,503	5,525	28,621	28,776	28,700
Greece .....	210	205	200	3,286	3,341	3,400	690	685	680
Ireland .....	1,269	1,267	1,272	4,456	4,481	4,421	5,655	5,677	5,623
Italy .....	2,167	2,100	2,100	4,845	5,143	5,151	10,500	10,800	10,818
Netherlands .....	1,709	1,664	1,660	6,609	6,618	6,580	11,294	11,013	10,922
Portugal .....	368	366	364	4,565	4,727	4,890	1,680	1,730	1,780
Spain .....	1,351	1,350	1,300	4,441	4,370	4,385	6,000	5,900	5,700
Sweden .....	482	466	473	6,728	7,122	6,983	3,243	3,319	3,303
United Kingdom .....	2,268	2,130	2,090	6,481	6,873	7,096	14,700	14,640	14,830
Total .....	22,434	21,940	21,648	.....	.....	.....	121,703	121,434	121,126
Western Europe:									
Switzerland .....	759	752	742	5,186	5,128	5,212	3,936	3,856	3,867
Total .....	759	752	742	.....	.....	.....	3,936	3,856	3,867
Eastern Europe:									
Poland .....	3,715	3,442	3,550	3,074	3,396	3,375	11,420	11,690	11,980
Romania .....	1,778	1,776	1,740	3,310	3,090	3,098	5,885	5,488	5,390
Total .....	5,493	5,218	5,290	.....	.....	.....	17,305	17,178	17,370
Former Soviet Union:									
Russia .....	18,400	17,450	15,900	2,136	2,052	2,145	39,300	35,800	34,100
Ukraine .....	7,818	7,200	6,265	2,198	2,222	2,179	17,181	16,000	13,650
Total .....	26,218	24,650	22,165	.....	.....	.....	56,481	51,800	47,750
South Asia:									
India <sup>1</sup> .....	33,000	33,500	34,500	985	1,000	1,000	32,500	33,500	34,500
Total .....	33,000	33,500	34,500	.....	.....	.....	32,500	33,500	34,500
Asia:									
China .....	2,138	2,552	2,120	2,696	2,467	3,148	5,764	6,296	6,674
Japan .....	1,034	1,035	1,032	8,106	8,364	8,374	8,382	8,657	8,642
Total .....	3,172	3,587	3,152	.....	.....	.....	14,146	14,953	15,316
Oceania:									
Australia <sup>2</sup> .....	1,786	1,822	1,977	4,722	4,916	4,691	8,433	8,957	9,274
New Zealand <sup>3</sup> .....	2,994	3,153	3,260	3,234	3,300	3,528	9,684	10,405	11,500
Total .....	4,780	4,975	5,237	.....	.....	.....	18,117	19,362	20,774
World total .....	134,858	132,941	131,112	.....	.....	.....	380,752	379,822	381,460

<sup>1</sup> Year beginning April 1 of the year shown. <sup>2</sup> Year ending June 30 of the year shown. <sup>3</sup> Year ending May 31 of the year shown.

FAS, Dairy, Livestock and Poultry Division, (202) 720-3761. Data from counselor/attache reports and official statistics.

**Table 8-13.—Milk Production: Marketings, income, and value, by States, 1997  
(preliminary)**

State	Milk sold to plants and dealers <sup>1</sup>				Milk sold directly to consumers <sup>2</sup>		
	Quantity	Percent fluid grade <sup>3</sup>	Price per 100 pounds	Cash receipts	Quantity	Price per quart	Cash receipts
	<i>Million pounds</i>	<i>Percent</i>	<i>Dollars</i>	<i>1,000 dollars</i>	<i>1,000 quarts</i>	<i>Cents</i>	<i>1,000 dollars</i>
AL .....	414	100	14.80	61,272	.....	.....	.....
AK .....	13.9	100	20.30	2,822	93	0.75	70
AZ .....	2,652	100	13.00	344,760	.....	.....	.....
AR .....	623	98	14.50	90,335	.....	.....	.....
CA .....	27,039	99	12.62	3,412,322	251,628	0.85	213,884
CO .....	1,590	100	13.00	206,700	20,000	0.82	16,400
CT .....	488	100	14.60	71,248	6,512	0.75	4,884
DE .....	152	100	13.80	20,976	.....	.....	.....
FL .....	2,472	100	16.50	407,880	.....	.....	.....
GA .....	1,465	100	14.70	215,355	4,651	0.76	3,535
HI .....	119.3	100	24.71	29,479	.....	.....	.....
ID .....	5,153	96	12.30	633,819	.....	.....	.....
IL .....	2,284	94	13.60	310,624	.....	.....	.....
IN .....	2,149	91	13.00	279,370	.....	.....	.....
IA .....	3,934	92	13.40	527,156	.....	.....	.....
KS .....	1,271	97	12.80	162,688	.....	.....	.....
KY .....	1,774	98	13.70	243,038	.....	.....	.....
LA .....	779	100	14.30	111,397	.....	.....	.....
ME .....	645	100	14.50	93,525	3,721	0.57	2,121
MD .....	1,322	100	13.80	182,436	.....	.....	.....
MA .....	413	100	14.70	60,711	7,442	0.75	5,581
MI .....	5,350	99	13.60	727,600	6,977	0.65	4,535
MN .....	9,100	92	13.19	1,200,290	.....	.....	.....
MS .....	630	100	14.40	90,720	.....	.....	.....
MO .....	2,329	94	13.70	319,073	.....	.....	.....
MT .....	284	100	13.20	37,488	.....	.....	.....
NE .....	1,015	94	13.20	133,980	.....	.....	.....
NV .....	471	100	12.00	56,520	.....	.....	.....
NH .....	323	100	14.60	47,158	.....	.....	.....
NJ .....	295	100	13.80	40,710	.....	.....	.....
NM .....	3,946	100	12.90	509,034	21,395	0.79	16,902
NY .....	11,380	100	13.40	1,524,920	5,581	0.63	3,516
NC .....	1,239	99	15.10	187,089	.....	.....	.....
ND .....	685	99	12.40	84,940	.....	.....	.....
OH .....	4,385	94	13.30	583,205	.....	.....	.....
OK .....	1,258	99	13.80	173,604	.....	.....	.....
OR .....	1,515	99	13.20	199,980	30,233	0.60	18,140
PA .....	10,394	99	14.00	1,455,160	121,860	0.58	70,679
RI .....	31.6	100	14.50	4,582	.....	.....	.....
SC .....	387	100	14.50	56,115	930	0.78	726
SD .....	1,370	60	13.20	180,840	.....	.....	.....
TN .....	1,585	98	14.10	223,485	.....	.....	.....
TX .....	5,747	100	13.70	787,339	.....	.....	.....
UT .....	1,473	91	12.30	181,179	21,860	0.69	15,084
VT .....	2,565	100	14.30	366,795	2,791	0.70	1,953
VA .....	1,844	99	14.00	258,160	.....	.....	.....
WA .....	5,081	100	13.20	670,692	89,767	0.64	57,451
WV .....	263	99	13.50	35,505	.....	.....	.....
WI .....	22,117	93	13.33	2,948,196	.....	.....	.....
WY .....	79.1	81	12.20	9,650	.....	.....	.....
US .....	153,894	97	13.36	20,561,922	595,442	0.731	435,460

See footnotes at end of table.

**Table 8-13.—Milk Production: Marketings, income, and value, by States, 1997 (preliminary)—Continued**

State	Combined marketing of milk and cream				Used for milk, cream, and butter where produced		Gross producer income <sup>6</sup>	Value of milk produced <sup>5,7</sup>
	Milk utilized	Average returns <sup>4</sup>		Cash receipts from marketings	Milk utilized	Value <sup>5</sup>		
		Per 100 cwt milk	Per lb. milkfat					
	<i>Million pounds</i>	<i>Dollars</i>	<i>Dollars</i>	<i>1,000 dollars</i>	<i>Million pounds</i>	<i>1,000 dollars</i>	<i>1,000 dollars</i>	<i>1,000 dollars</i>
AL .....	414	14.80	4.12	61,272	1	148	61,420	61,864
AK .....	14.1	20.51	6.09	2,891	0.4	82	2,973	3,076
AZ .....	2,652	13.00	3.65	344,760	2	260	345,020	346,320
AR .....	623	14.50	4.11	90,335	7	1,015	91,350	92,945
CA .....	27,580	13.15	3.61	3,626,206	7	920	3,627,126	3,632,517
CO .....	1,633	13.66	3.79	223,100	8	1,093	224,193	229,385
CT .....	502	15.17	4.17	76,132	1	152	76,283	77,193
DE .....	152	13.80	3.76	20,976	.....	.....	20,976	21,114
FL .....	2,472	16.50	4.61	407,880	1	165	408,045	408,705
GA .....	1,475	14.84	4.15	218,890	1	148	219,038	220,819
HI .....	119.3	24.71	7.23	29,479	1.2	297	29,776	30,393
ID .....	5,153	12.30	3.47	633,819	5	615	634,434	638,739
IL .....	2,284	13.60	3.67	310,624	3	408	311,032	313,752
IN .....	2,149	13.00	3.52	279,370	10	1,300	280,670	284,570
IA .....	3,934	13.40	3.60	527,156	18	2,412	529,568	534,258
KS .....	1,271	12.80	3.51	162,688	1	128	162,816	164,480
KY .....	1,774	13.70	3.81	243,038	10	1,370	244,408	248,655
LA .....	779	14.30	4.12	111,397	3	429	111,826	113,542
ME .....	653	14.65	4.02	95,646	1	146	95,792	96,818
MD .....	1,322	13.80	3.76	182,436	3	414	182,850	183,816
MA .....	429	15.45	4.18	66,292	1	155	66,447	67,220
MI .....	5,365	13.65	3.74	732,135	4	546	732,681	738,276
MN .....	9,100	13.19	3.54	1,200,290	15	1,979	1,202,269	1,214,799
MS .....	630	14.40	4.06	90,720	1	144	90,864	91,296
MO .....	2,329	13.70	3.76	319,073	6	822	319,895	324,005
MT .....	284	13.20	3.73	37,488	4	528	38,016	38,940
NE .....	1,015	13.20	3.58	133,980	10	1,320	135,300	137,280
NV .....	471	12.00	3.34	56,520	1	120	56,640	57,240
NH .....	323	14.60	3.87	47,158	1	146	47,304	47,888
NJ .....	295	13.80	3.81	40,710	1	138	40,848	41,262
NM .....	3,992	13.17	3.76	525,936	6	790	526,727	528,440
NY .....	11,392	13.42	3.66	1,528,436	25	3,354	1,531,790	1,549,232
NC .....	1,239	15.10	4.15	187,089	8	1,208	188,297	190,109
ND .....	685	12.40	3.39	84,940	2	248	85,188	87,048
OH .....	4,385	13.30	3.60	583,205	8	1,064	584,269	587,195
OK .....	1,258	13.80	3.85	173,604	2	276	173,880	175,950
OR .....	1,580	13.81	3.78	218,120	5	690	218,810	222,261
PA .....	10,656	14.32	3.96	1,525,839	11	1,575	1,527,414	1,538,153
RI .....	31.6	14.50	4.14	4,582	0	0	4,582	4,640
SC .....	389	14.61	3.99	56,841	1	146	56,987	57,279
SD .....	1,370	13.20	3.57	180,840	2	264	181,104	182,688
TN .....	1,585	14.10	3.95	223,485	1	141	223,626	224,754
TX .....	5,747	13.70	3.83	787,339	2	274	787,613	790,216
UT .....	1,520	12.91	3.59	196,263	2	258	196,521	198,845
VT .....	2,571	14.34	3.86	368,748	5	717	369,466	373,051
VA .....	1,844	14.00	3.93	258,160	2	280	258,440	260,260
WA .....	5,274	13.81	3.79	728,143	1	138	728,281	732,423
WV .....	263	13.50	3.68	35,505	1	135	35,640	35,910
WI .....	22,117	13.33	3.54	2,948,196	51	6,798	2,954,994	2,981,654
WY .....	79.1	12.20	3.36	9,650	0.2	24	9,675	9,845
US .....	155,174	13.53	3.70	20,997,382	263	35,782	21,033,164	21,191,120

<sup>1</sup> Includes the equivalent amount of milk for cream sold to plants and dealers. <sup>2</sup> Some States not published to avoid disclosing individual operations. <sup>3</sup> Percentage of milk sold to plants and dealers that is eligible for fluid use. <sup>4</sup> Cash receipts divided by milk or milkfat in combined marketings. <sup>5</sup> Value at averaged returns per 100 pounds of milk in combined marketings of milk and cream. <sup>6</sup> Cash receipts from marketings of milk and cream plus value of milk used for home consumption. <sup>7</sup> Includes value of milk fed to calves.

**Table 8-14.—Milk Production: Marketings, income and value, United States, 1988–97**

Year	Milk sold to plants and dealers			Milk sold directly to consumers		
	Quantity	Price per 100 pounds	Cash receipts	Quantity	Price per quart	Cash receipts
	<i>Million pounds</i>	<i>Dollars</i>	<i>1,000 dollars</i>	<i>1,000 quarts</i>	<i>Cents</i>	<i>1,000 dollars</i>
1988 .....	141,698	12.26	17,367,694	527,581	50.0	263,972
1989 .....	140,795	13.56	19,097,059	482,884	53.9	260,247
1990 .....	144,772	13.74	19,889,975	443,349	56.1	248,550
1991 .....	144,742	12.27	17,752,657	456,372	55.6	253,953
1992 .....	147,905	13.15	19,451,103	488,465	58.2	284,498
1993 .....	147,779	12.84	18,979,392	449,860	58.5	263,158
1994 .....	150,907	13.01	19,631,922	491,721	61.7	303,237
1995 .....	152,543	12.78	19,500,646	607,535	64.7	392,963
1996 .....	151,455	14.75	22,341,528	611,256	78.5	478,772
1997 <sup>1</sup> .....	153,894	13.36	20,561,922	595,442	73.1	435,460

Year	Combined marketings of milk and cream				Used for milk, cream, and butter on farms where produced		Gross farm income from dairy products <sup>4</sup>	Farm value of all milk produced <sup>3,5</sup>
	Milk utilized	Average returns <sup>2</sup>		Cash receipts from marketings	Milk utilized	Value <sup>3</sup>		
		Per 100 pounds milk	Per pound milkfat					
	<i>Million pounds</i>	<i>Dollars</i>	<i>Dollars</i>	<i>1,000 dollars</i>	<i>Million pounds</i>	<i>1,000 dollars</i>	<i>1,000 dollars</i>	<i>1,000 dollars</i>
1988 .....	142,833	12.34	3.36	17,631,666	613	77,167	17,708,832	17,905,738
1989 .....	141,834	13.65	3.70	19,357,306	563	78,102	19,435,407	19,640,390
1990 .....	145,725	13.82	3.79	20,138,525	512	72,517	20,211,042	20,418,351
1991 .....	145,723	12.36	3.38	18,006,611	494	61,972	18,068,583	18,252,108
1992 .....	148,955	13.25	3.60	19,735,601	455	61,470	19,797,071	19,989,087
1993 .....	148,746	12.94	3.53	19,242,550	428	56,469	19,299,020	19,483,528
1994 .....	151,965	13.12	3.58	19,935,160	394	52,890	19,988,050	20,161,937
1995 .....	153,849	12.93	3.53	19,893,608	346	45,332	19,938,940	20,098,996
1996 .....	152,769	14.94	4.05	22,820,300	301	45,220	22,865,520	23,043,699
1997 <sup>1</sup> .....	155,174	13.53	3.70	20,997,382	263	35,782	21,033,164	21,191,120

<sup>1</sup> Preliminary. <sup>2</sup> Cash receipts divided by milk or milkfat represented in combined marketings. <sup>3</sup> Valued at average returns per 100 pounds of milk in combined marketings of milk and cream. <sup>4</sup> Cash receipts from marketings of milk and cream plus value of milk used for home consumption and producer-churned butter. <sup>5</sup> Includes value of milk fed to calves. NASS, Livestock and Economics Branch, (202) 720-6146.

**Table 8-15.—Milk: Quantities used and marketed by farmers, United States, 1988–97**

Year	Milk used on farms where produced			Milk marketed by producers		
	Fed to calves <sup>1</sup>	Consumed as fluid milk or cream	Total	Sold to plants and dealers <sup>2</sup> as whole milk	Sold directly to consumers <sup>3</sup>	Total
	<i>Million pounds</i>	<i>Million pounds</i>	<i>Million pounds</i>	<i>Million pounds</i>	<i>Million pounds</i>	<i>Million pounds</i>
1988 .....	1,589	613	2,201	141,698	1,134	142,833
1989 .....	1,496	563	2,059	140,795	1,038	141,834
1990 .....	1,484	512	1,996	144,772	953	145,725
1991 .....	1,480	494	1,974	144,742	981	145,723
1992 .....	1,436	455	1,892	147,943	1,050	148,993
1993 .....	1,408	428	1,836	147,779	967	148,746
1994 .....	1,305	394	1,700	150,907	1,057	151,965
1995 .....	1,230	346	1,576	152,543	1,306	153,849
1996 .....	1,190	301	1,490	151,455	1,314	152,769
1997 <sup>4</sup> .....	1,166	263	1,429	153,894	1,280	155,174

<sup>1</sup> Excludes milk sucked by calves. <sup>2</sup> Includes milk produced by dealers' own herds. <sup>3</sup> Sales directly to consumers by producers who sell only milk from their own herds; also includes milk produced by institutional herds. <sup>4</sup> Preliminary.

NASS, Livestock and Economics Branch, (202) 720-6146.

**Table 8-16.—Federal milk order markets: Measures of growth, 1988–97<sup>1</sup>**

Year	Number of markets <sup>2</sup>	Population of Federal milk marketing areas <sup>3</sup>	Number of Handlers <sup>2</sup>	Number of Producers <sup>4</sup>	Producer deliveries	Producer deliveries used in Class I	Percentage of producer deliveries used in Class I
	<i>Number</i>	<i>Thousands</i>	<i>Number</i>	<i>Number</i>	<i>Million pounds</i>	<i>Million pounds</i>	<i>Percent</i>
1988 .....	42	184,180	776	104,141	100,066	43,141	43.1
1989 .....	41	185,919	748	100,291	95,871	43,367	45.2
1990 .....	42	195,841	753	100,397	102,396	43,783	42.8
1991 .....	40	198,409	722	100,267	103,252	45,033	43.6
1992 .....	40	200,530	698	97,803	107,947	44,914	41.6
1993 .....	38	199,604	675	92,934	103,979	44,805	43.1
1994 .....	38	201,561	629	91,397	107,811	44,866	41.6
1995 .....	33	207,548	571	88,717	108,548	45,004	41.5
1996 .....	32	209,599	570	82,947	104,501	45,479	43.5
1997 .....	31	208,369	570	78,590	105,221	44,916	42.7

Year	Prices at 3.5 percent butterfat content per hundredweight <sup>5</sup>		Receipts as percentage of milk sold to plants and dealers		Daily deliveries per producer	Gross value of blend price adjusted for butterfat content	
	Class I	Blend	Fluid grade	All milk		Per producer	All producers
	<i>Dollars</i>	<i>Dollars</i>	<i>Percent</i>	<i>Percent</i>	<i>Pounds</i>	<i>Dollars</i>	<i>1,000 dollars</i>
1988 .....	13.42	12.14	79	71	2,627	119,261	12,419,974
1989 .....	14.51	13.30	75	68	2,614	129,744	13,012,796
1990 .....	15.55	13.78	77	70	2,796	142,324	14,289,567
1991 .....	13.30	12.11	76	71	2,821	121,479	12,180,354
1992 .....	14.57	13.12	77	73	3,017	146,452	14,323,698
1993 .....	14.19	12.89	73	69	3,073	145,350	13,507,974
1994 .....	14.75	13.16	75	71	3,232	156,253	14,281,193
1995 .....	14.19	12.79	75	71	3,350	157,754	13,995,454
1996 .....	16.19	14.64	72	69	3,442	187,713	15,570,261
1997 .....	14.36	13.10	70	68	3,663	178,043	13,992,391

<sup>1</sup>Beginning in 1988, handlers started to elect not to pool substantial volumes of milk that normally would have been pooled under Federal orders. This decision resulted from disadvantageous blend/class price relationships and qualification circumstances. This fact should be kept in mind if year-to-year comparisons are made using the "producer deliveries" measures of growth. <sup>2</sup>End of year. <sup>3</sup>End of year. Data for 1990 according to 1990 U.S. census of population. Data for 1988-89, and 1991-97 are estimated. <sup>4</sup>Average for year. <sup>5</sup>Prices are weighted averages.

**Table 8-17.—Dairy products: Quantities manufactured, United States, 1990–97**

Product	1990	1991	1992	1993	1994	1995	1996	1997 <sup>1</sup>
	<i>1,000</i> pounds	<i>1,000</i> pounds	<i>1,000</i> pounds	<i>1,000</i> pounds	<i>1,000</i> pounds	<i>1,000</i> pounds	<i>1,000</i> pounds	<i>1,000</i> pounds
Creamery butter .....	1,302,177	1,335,782	1,365,164	1,315,198	1,295,942	1,264,474	1,174,475	1,151,250
American cheese:								
Whole milk .....	2,894,221	2,768,925	2,936,561	2,957,260	2,974,420	3,131,390	3,280,733	3,285,203
Part skim .....	845	841	1,177	3,727	24,723	24,008		
Swiss cheese .....	261,065	234,489	237,304	231,441	221,243	221,713	219,047	207,583
Muenster cheese .....	100,201	106,352	116,385	117,468	113,587	109,128	106,815	100,191
Brick cheese .....	17,337	15,298	15,476	12,488	12,222	10,426	10,647	8,535
Limburger cheese ....	803	715	985	863	849	868	719	746
Cream and Neuf- chatel cheese .....	430,799	446,693	516,654	539,907	573,394	543,789	574,700	614,920
Blue cheese .....	36,434	34,371	33,307	33,295	36,514	36,593	38,311	42,773
All Italian varieties of cheese .....	2,207,021	2,328,624	2,508,577	2,494,521	2,625,702	2,674,390	2,812,397	2,880,404
All other varieties of cheese .....	110,710	118,547	121,865	137,202	152,037	164,591	106,692	119,829
Total of all cheese	6,059,436	6,054,855	6,488,291	6,528,172	6,734,691	6,916,896	7,217,518	7,329,018
Cottage cheese:								
Curd <sup>2</sup> .....	493,452	490,909	502,411	471,364	463,283	458,918	448,327	458,460
Creamed <sup>2</sup> .....	530,636	497,928	457,340	430,518	409,954	384,889	360,413	359,525
Lowfat <sup>2</sup> .....	301,833	321,109	329,504	317,009	321,077	325,928	329,890	346,687
Sweetened con- densed milk:								
Bulk goods:								
Skimmed .....	44,510	125,161	126,380	97,690	56,582	48,610	39,031	34,238
Unskimmed .....	105,371	132,579	129,704	139,211	118,800	108,949	114,933	121,826
Unsweetened con- densed milk:								
Bulk goods:								
Skimmed .....	1,131,512	1,122,060	1,196,110	1,269,557	1,333,310	1,121,027	1,015,432	997,802
Unskimmed .....	144,417	150,037	162,912	99,034	84,774	93,253	100,407	93,851
Evaporated and con- densed milk:								
Case goods:								
Skimmed .....	12,536	16,952	16,456	22,235	26,664	26,077	28,681	29,836
Unskimmed .....	602,647	543,094	582,115	534,507	537,881	476,656	463,613	549,129
Condensed or evapo- rated buttermilk ....	37,247	39,572	46,026	46,525	34,133	36,977	32,142	30,867
Dry buttermilk .....	55,851	59,928	61,077	50,988	52,307	54,761	48,777	49,308
Dry whole milk .....	175,129	106,778	168,322	153,830	166,786	171,317	134,351	122,091
Nonfat dry milk .....	879,212	877,525	872,123	954,485	1,230,855	1,232,994	1,061,771	1,217,562
Dry skim milk (animal feed) .....	23,221	7,216	9,948	9,802	11,187	9,560	6,279	5,291
Dry whey .....	1,143,259	1,167,394	1,237,283	1,196,378	1,211,787	1,147,265	1,116,514	1,136,824
	<i>1,000</i> gallons	<i>1,000</i> gallons	<i>1,000</i> gallons	<i>1,000</i> gallons	<i>1,000</i> gallons	<i>1,000</i> gallons	<i>1,000</i> gallons	<i>1,000</i> gallons
Ice cream .....	823,610	862,638	866,110	866,248	876,097	862,232	878,572	905,590
Ice cream, lowfat <sup>3</sup> ....	352,271	341,793	328,185	325,346	358,605	356,861	366,126	385,591
Sherbet (does not in- clude water ices) ..	50,278	47,379	49,940	50,813	54,093	53,496	52,611	52,784

<sup>1</sup> Preliminary. <sup>2</sup> Cottage cheese curd includes pot and bakers' cheese. Creamed cottage cheese contains not less than 4 percent milkfat. Lowfat cottage cheese contains less than 4 percent milkfat. <sup>3</sup> Includes freezer-made milkshake in most States.

NASS, Livestock and Economics Branch, (202) 720-6146.

**Table 8-18.—Dairy products: Factory production of specified items, by States, 1996–97**

State	Butter		Total American cheese <sup>2</sup>		Total cheese <sup>3</sup>	
	1996	1997 <sup>1</sup>	1996	1997 <sup>1</sup>	1996	1997 <sup>1</sup>
	<i>1,000 pounds</i>	<i>1,000 pounds</i>	<i>1,000 pounds</i>	<i>1,000 pounds</i>	<i>1,000 pounds</i>	<i>1,000 pounds</i>
CA .....	305,667	314,207	410,915	475,747	1,053,979	1,172,775
ID .....			388,667	427,952	432,888	471,928
IL .....					115,248	120,199
IA .....			99,106	102,481	225,189	234,252
KS .....			29,328	27,708	29,328	27,708
MA .....					934	
MI .....	22,110				106,603	
MN .....	58,575	61,070	589,545	541,837	682,058	642,013
MO .....					159,049	166,713
NE .....					110,876	96,151
NJ .....						41,828
NM .....				61,523		189,686
NY .....	27,173	24,501	88,033	93,388	583,689	616,689
ND .....	4,059	4,004	24,820	21,284	24,820	21,284
OH .....			31,875	32,576	109,576	111,542
OR .....	19,536	23,212		50,320	52,157	
PA .....	79,331	61,501			340,587	342,776
SD .....			50,404	50,997	137,897	135,690
TN .....		31,122	10,733		10,838	
VT .....			36,654	29,679	84,702	63,531
UT .....					134,031	101,880
WA .....	95,342	91,230	52,204	66,659	104,284	121,085
WI .....	294,956	303,444	965,053	944,003	2,095,946	2,119,317
Other .....	267,726	236,959	503,436	359,049	622,839	531,971
US ..	1,174,475	1,151,250	3,280,773	3,285,203	7,217,518	7,329,018

See footnotes at end of table.

**Table 8-18.—Dairy products: Factory production of specified items, by States, 1996–97—Continued**

State	Evaporated and sweetened condensed whole milk (case goods)		Nonfat dry milk for human food		Total ice cream	
	1996	1997 <sup>1</sup>	1996	1997 <sup>1</sup>	1996	1997 <sup>1</sup>
	1,000 pounds	1,000 pounds	1,000 pounds	1,000 pounds	1,000 pounds	1,000 pounds
AK .....					45	35
AZ .....					7,429	
CA .....			425,971	548,512	108,830	116,151
CO .....					10,262	
FL .....						23,945
GA .....						
ID .....					7,266	7,054
IL .....					34,406	35,482
IN .....					45,328	61,497
IA .....			58,466	58,228		
KS .....					3,225	3,715
KY .....						4,954
MD .....						
MI .....			29,396		29,296	27,973
MN .....			14,097	12,841	41,071	41,593
MO .....					16,401	15,096
NM .....			12,155	23,723		4,813
NY .....			24,155		32,203	33,353
NC .....					27,478	22,994
ND .....			485	386	1,005	1,126
OH .....					41,440	40,972
OR .....					10,519	10,374
PA .....						
SC .....					10,639	
TN .....			4,220		14,217	14,166
TX .....					47,783	53,393
UT .....					17,615	14,437
WA .....			188,137	171,648	21,523	20,670
WI .....			34,412	21,420	12,608	13,042
Other .....			270,277	380,804	337,983	338,755
US .....	463,613	549,129	1,061,771	1,217,562	878,572	905,590

<sup>1</sup> Preliminary. <sup>2</sup> Includes Colby, washed curd, high and low moisture Jack, and Monterey. <sup>3</sup> Includes full-skim American cheese; excludes cottage cheese.

NASS, Livestock and Economics Branch, (202) 720-6146.



**Table 8-19.—Milk cows, milk, and fat in cream: Average prices received by farmers, United States, 1988–97**

Year	Milk cows, per head <sup>1</sup>	Milk per 100 pounds <sup>2</sup>					
		Eligible for fluid market <sup>3</sup>		Of manufacturing grade		All milk wholesale	
		Price per 100 lb.	Fat test	Price per 100 lb.	Fat test	Price per 100 lb.	Fat test
	<i>Dollars</i>	<i>Dollars</i>	<i>Percent</i>	<i>Dollars</i>	<i>Percent</i>	<i>Dollars</i>	<i>Percent</i>
1988	990.00	12.36	3.67	11.15	3.68	12.26	3.67
1989	1,030.00	13.66	3.68	12.38	3.70	13.56	3.68
1990	1,160.00	13.89	3.64	12.34	3.70	13.74	3.65
1991	1,100.00	12.30	3.65	11.05	3.71	12.27	3.66
1992	1,130.00	13.19	3.68	11.91	3.73	13.15	3.68
1993	1,160.00	12.88	3.66	11.80	3.76	12.84	3.66
1994	1,170.00	13.02	3.65	11.85	3.76	13.01	3.66
1995	1,130.00	12.80	3.65	11.79	3.75	12.78	3.66
1996	1,090.00	14.79	3.69	13.43	3.78	14.75	3.69
1997	1,120.00	13.40	3.65	12.17	3.77	13.36	3.66

<sup>1</sup> Simple average of monthly prices, by States, weighted by the number of milk cows on farms Jan. 1 of the current year. <sup>2</sup> Average price at average fat test for all milk sold at wholesale to plants and dealers, based on reports from milk-market administrators, cooperative milk-market associations, whole-milk distributors, and milk-products manufacturing plants, f.o.b. plant or receiving station (whichever is the customary place for determining prices) before hauling costs are deducted and including all premiums. <sup>3</sup> Milk eligible for fluid market, including surplus diverted to manufacturing.  
 NASS, Livestock and Economics Branch, (202) 720-3570.

**Table 8-20.—Dairy products: Manufacturers' average selling price<sup>1</sup> of specified products, United States, 1988–97**

Year	Nonfat dry milk for human food, per pound, f.o.b. factory	Dry skim milk for animal feed, per pound, f.o.b. factory	Dry whole milk, per pound, f.o.b. factory
	<i>Cents</i>	<i>Cents</i>	<i>Cents</i>
1988	76.58	48.11	113.50
1989	95.16	64.45	126.03
1990	94.29	60.03	126.29
1991	88.29	54.72	109.20
1992	102.41	56.77	116.11
1993	107.34	55.80	113.02
1994	105.96	52.54	114.18
1995	105.31	50.13	111.89
1996	117.36	60.22	128.31
1997	107.96	59.49	117.65

<sup>1</sup> Includes milk sold in bulk and in package.  
 NASS, Livestock and Economics Branch, (202) 720-6146.

**Table 8-21.—Dairy products: Manufacturers' stocks, end of month, United States, 1996 and 1997**

Month	Evaporated and sweetened condensed whole milk (case goods)		Dry whole milk		Nonfat dry milk (human food)	
	1996	1997	1996	1997	1996	1997
	<i>1,000 pounds</i>	<i>1,000 pounds</i>	<i>1,000 pounds</i>	<i>1,000 pounds</i>	<i>1,000 pounds</i>	<i>1,000 pounds</i>
January	35,515	20,640	7,311	7,863	71,687	75,498
February	39,198	20,422	8,557	4,770	80,018	71,227
March	43,445	24,929	9,809	5,203	98,399	80,345
April	49,961	26,132	10,214	4,267	100,272	118,490
May	51,780	34,842	9,391	6,161	86,463	151,167
June	48,743	42,769	9,037	5,131	82,488	173,276
July	42,258	36,901	7,291	5,828	76,801	158,714
August	41,398	40,186	6,217	4,539	66,089	154,550
September	35,713	44,614	4,551	5,766	50,233	133,937
October	21,762	32,117	3,807	5,023	47,216	114,764
November	16,734	28,875	2,589	3,968	49,210	100,615
December	19,485	31,397	6,422	5,605	71,110	103,326

NASS, Livestock and Economics Branch, (202) 720-6146.

**Table 8-22.—Milk markets under Federal order program: Whole milk and lowfat and skim milk products sold for fluid consumption within defined marketing areas, 1996<sup>1</sup>**

Federal milk order marketing area	Whole milk items <sup>2</sup>		Lowfat and skim milk items <sup>3</sup>		Total fluid milk items	
	Quantity	Butterfat content	Quantity	Butterfat content	Quantity	Butterfat content
	<i>Million pounds</i>	<i>Percent</i>	<i>Million pounds</i>	<i>Percent</i>	<i>Million pounds</i>	<i>Percent</i>
NORTH ATLANTIC	4,303	3.21	5,416	1.17	9,719	2.07
New England .....	1,038	3.07	1,536	1.13	2,574	1.91
New York-New Jersey .....	2,232	3.26	2,109	1.13	4,342	2.24
Middle Atlantic .....	1,032	3.26	1,771	1.20	2,803	1.96
SOUTHEASTERN	4,282	3.24	5,708	1.22	9,990	2.09
Carolina .....	909	3.13	1,053	1.21	1,963	2.10
Tennessee Valley .....	254	3.23	494	1.37	748	2.00
Southeast .....	1,961	3.27	2,612	1.29	4,573	2.14
Upper Florida .....	338	3.27	537	1.16	874	1.98
Tampa Bay .....	343	3.31	537	1.09	880	1.96
Southeastern Florida .....	478	3.30	475	1.09	953	2.20
EAST NORTH CENTRAL	2,674	3.26	8,419	1.38	11,093	1.84
Michigan Upper Peninsula .....	12	3.30	84	1.43	96	1.67
Southern Michigan .....	556	3.27	1,284	1.25	1,840	1.86
Eastern Ohio-Western Pa. ....	463	3.23	1,284	1.43	1,747	1.91
Ohio Valley .....	468	3.26	1,344	1.48	1,812	1.94
Indiana .....	224	3.27	927	1.44	1,151	1.80
Chicago Regional .....	561	3.27	2,142	1.33	2,703	1.73
Central Illinois .....	33	3.27	170	1.47	203	1.76
S. Ill.-E. Missouri .....	187	3.23	702	1.40	889	1.78
Louisville-Lex.-Evans. ....	170	3.28	482	1.43	652	1.91
WEST NORTH CENTRAL	478	3.24	2,844	1.17	3,322	1.47
Upper Midwest .....	154	3.18	1,334	1.06	1,488	1.28
Eastern South Dakota .....	11	3.23	103	1.32	113	1.50
Black Hills <sup>4</sup> .....	5	3.33	26	1.44	32	1.75
Iowa .....	88	3.29	590	1.22	678	1.49
Nebraska-Western Iowa .....	85	3.26	393	1.26	478	1.62
Greater Kansas City .....	134	3.26	398	1.32	532	1.81
WEST SOUTH CENTRAL	2,050	3.30	2,451	1.31	4,501	2.22
Southwest Plains .....	489	3.28	744	1.36	1,232	2.12
Texas .....	1,562	3.31	1,707	1.29	3,269	2.25
MOUNTAIN	1,074	3.29	2,403	1.41	3,477	1.99
Eastern Colorado .....	193	3.28	535	1.36	727	1.87
Western Colorado .....	19	3.30	56	1.44	75	1.90
S.W. Idaho-E. Oreg .....	34	3.32	144	1.50	177	1.84
Great Basin .....	188	3.28	721	1.42	909	1.80
Central Arizona .....	270	3.27	663	1.43	933	1.97
New Mexico-West Texas .....	370	3.32	285	1.39	655	2.48
PACIFIC	370	3.23	1,869	1.40	2,239	1.70
Pacific Northwest .....	370	3.23	1,869	1.40	2,239	1.70
Combined areas	15,231	3.25	29,109	1.29	44,341	1.96

See footnotes at end of table.

**Table 8-22.—Milk markets under Federal order program: Whole milk and lowfat and skim milk products sold for fluid consumption within defined marketing areas, 1997<sup>1</sup>—Continued**

Federal milk order marketing area	Whole milk items <sup>2</sup>		Lowfat and skim milk items <sup>3</sup>		Total fluid milk items	
	Quantity	Butterfat content	Quantity	Butterfat content	Quantity	Butterfat content
	Million pounds	Percent	Million pounds	Percent	Million pounds	Percent
<b>NORTH ATLANTIC</b>	4,193	3.22	5,406	1.14	9,599	2.05
New England .....	1,021	3.10	1,533	1.10	2,554	1.90
New York-New Jersey .....	2,171	3.26	2,099	1.14	4,269	2.22
Middle Atlantic .....	1,002	3.24	1,774	1.18	2,776	1.93
<b>SOUTHEASTERN</b>	4,216	3.23	5,623	1.22	9,839	2.08
Carolina .....	924	3.09	1,067	1.20	1,991	2.08
Tennessee Valley <sup>5</sup> .....	179	3.28	374	1.37	553	1.99
Southeast .....	1,960	3.27	2,639	1.28	4,599	2.13
Upper Florida .....	321	3.27	516	1.14	837	1.96
Tampa Bay .....	352	3.29	549	1.08	901	1.94
Southeastern Florida .....	480	3.30	476	1.06	957	2.19
<b>EAST NORTH CENTRAL</b>	2,661	3.25	8,398	1.35	11,060	1.81
Michigan Upper Peninsula .....	13	3.11	84	1.41	97	1.64
Southern Michigan .....	546	3.25	1,277	1.25	1,823	1.88
Eastern Ohio-Western Pa. ....	436	3.22	1,242	1.40	1,678	1.87
Ohio Valley .....	486	3.25	1,384	1.44	1,870	1.91
Indiana .....	229	3.29	927	1.40	1,155	1.77
Chicago Regional .....	564	3.25	2,151	1.30	2,716	1.70
Central Illinois .....	33	3.31	168	1.29	202	1.77
S. Ill.-E. Missouri .....	190	3.21	693	1.41	882	1.76
Louisville-Lex.-Evans. ....	164	3.28	473	1.39	637	1.88
<b>WEST NORTH CENTRAL</b>	456	3.26	2,811	1.15	3,266	1.44
Upper Midwest .....	143	3.26	1,337	1.06	1,480	1.27
Eastern South Dakota .....	11	3.23	100	1.29	111	1.48
Iowa .....	87	3.29	588	1.20	675	1.46
Nebraska-Western Iowa .....	83	3.26	389	1.23	472	1.58
Greater Kansas City .....	132	3.25	397	1.28	529	1.77
<b>WEST SOUTH CENTRAL</b>	2,006	3.29	2,446	1.30	4,452	2.20
Southwest Plains .....	471	3.28	735	1.34	1,206	2.10
Texas .....	1,535	3.29	1,711	1.28	3,246	2.23
<b>MOUNTAIN</b>	1,083	3.29	2,410	1.39	3,494	1.98
Eastern Colorado .....	199	3.30	530	1.32	729	1.86
Western Colorado .....	20	3.30	58	1.44	78	1.89
S.W. Idaho-E. Oreg .....	32	3.27	145	1.47	176	1.80
Great Basin .....	195	3.29	719	1.41	914	1.81
Central Arizona .....	282	3.26	665	1.41	947	1.96
New Mexico-West Texas .....	356	3.31	293	1.38	649	2.44
<b>PACIFIC</b>	366	3.24	1,873	1.36	2,239	1.67
Pacific Northwest .....	366	3.24	1,873	1.36	2,239	1.67
<b>Combined areas</b>	14,982	3.24	28,966	1.27	43,949	1.94

<sup>1</sup>In-area sales include total sales in each of the areas by handlers regulated under the respective order, by handlers regulated under other orders, by partially regulated handlers, and by producer-handlers. Sales routes of handlers may extend outside defined marketing areas; therefore, some handlers' in-area sales are partially estimated. <sup>2</sup>Plain, flavored, and miscellaneous whole milk products. <sup>3</sup>Plain, fortified, flavored, and miscellaneous lowfat and skim milk products, and buttermilk. <sup>4</sup>Effective 10/1/96, the order regulating this marketing area was terminated. Data are for January-September and are included in regional and combined areas totals. <sup>5</sup>Effective 10/1/97, the order regulating this marketing area was terminated. Data are for January-September and are included in regional and combined areas totals.

Table 8-23.—Milk: Supply and utilization, United States, 1988–97

Item	1988	1989	1990	1991	1992
	<i>Million pounds</i>	<i>Million pounds</i>	<i>Million pounds</i>	<i>Million pounds</i>	<i>Million pounds</i>
Milk production .....	145,034	143,893	147,721	147,697	150,885
Net imports of ingredients (milk equivalent) <sup>2</sup> .....	212	183	195	102	145
Net change in storage cream (milk equivalent) <sup>3</sup> ...	0	-2	-4	0	-5
<b>Total supply .....</b>	<b>145,246</b>	<b>144,074</b>	<b>147,912</b>	<b>147,799</b>	<b>151,025</b>
<b>Utilization (milk equivalent):</b>					
<b>Used in manufactured products:</b>					
Creamery butter, total milk equivalent .....	27,116	28,486	29,391	30,039	30,478
Milk equivalent of butter from whey cream .....	4,017	3,961	4,348	4,296	4,150
Net milk equivalent .....	23,099	24,525	25,043	25,743	26,328
Cheese:					
American .....	27,571	26,605	28,964	27,950	29,263
Other .....	16,540	16,943	18,404	18,819	20,195
Cottage cheese, creamed .....	857	704	672	644	592
Canned milk:					
Evaporated and sweetened condensed .....	1,285	1,144	1,332	1,194	1,872
Bulk condensed whole milk:					
Unsweetened .....	640	428	351	364	417
Sweetened .....	172	215	243	236	301
Dry whole milk .....	1,263	1,286	1,292	785	1,227
Ice cream and other frozen dairy products, total milk equivalent .....	15,115	14,600	14,321	14,818	14,191
Milk equivalent of butter and condensed milk used in ice cream .....	2,155	2,069	2,014	2,092	2,367
Net milk equivalent .....	12,960	12,531	12,307	12,726	11,824
Other manufactured products <sup>4</sup> .....	388	357	332	356	188
<b>Total manufactured products .....</b>	<b>84,775</b>	<b>84,738</b>	<b>88,940</b>	<b>88,817</b>	<b>92,207</b>
<b>Available for use in fluid products:</b>					
Sold by dealers .....	53,277	54,235	54,435	54,815	54,244
Sold by producers directly to consumers <sup>5</sup> .....	1,134	1,038	953	981	1,050
<b>Total available for fluid products .....</b>	<b>54,411</b>	<b>55,273</b>	<b>55,388</b>	<b>55,796</b>	<b>55,294</b>
<b>Used on farms where produced:</b>					
Fed to calves .....	1,589	1,496	1,484	1,480	1,436
Used for farm-churned butter .....	613	563	512	494	455
<b>Total used on farms .....</b>	<b>2,201</b>	<b>2,059</b>	<b>1,996</b>	<b>1,974</b>	<b>1,892</b>
<b>Residual<sup>6</sup> .....</b>	<b>3,646</b>	<b>1,822</b>	<b>1,396</b>	<b>1,110</b>	<b>1,632</b>
<b>Total utilization .....</b>	<b>145,034</b>	<b>143,893</b>	<b>147,721</b>	<b>147,697</b>	<b>151,025</b>

See footnotes at end of table.

**Table 8-23.—Milk: Supply and utilization, United States, 1988–97—Continued**

Item	1993 <sup>1</sup>	1994 <sup>1</sup>	1995 <sup>1</sup>	1996 <sup>1</sup>	1997 <sup>1</sup>
	<i>Million pounds</i>	<i>Million pounds</i>	<i>Million pounds</i>	<i>Million pounds</i>	<i>Million pounds</i>
Milk production .....	150,582	153,664	155,425	154,331	156,602
Net imports of ingredients (milk equivalent) <sup>2</sup> .....	127	148	144	182	143
Net change in storage cream (milk equivalent) <sup>3</sup> ...	5	-1	1	N.A.	NA
<b>Total supply .....</b>	<b>150,714</b>	<b>153,811</b>	<b>155,570</b>	<b>154,513</b>	<b>156,745</b>
<b>Utilization (milk equivalent):</b>					
Used in manufactured products:					
Creamery butter, total milk equivalent .....	29,493	29,127	28,388	26,187	25,714
Milk equivalent of butter from whey cream .....	4,500	4,592	4,735	4,911	4,939
Net milk equivalent .....	24,993	24,535	23,653	21,276	20,775
Cheese:					
American .....	29,415	29,651	31,175	32,551	32,760
Other .....	20,456	21,492	21,414	21,386	2,240
Cottage cheese, creamed .....	557	524	494	461	(?)
Canned milk:					
Evaporated and sweetened condensed .....	1,178	1,184	1,049	1,013	1,208
Bulk condensed whole milk:					
Unsweetened .....	244	205	203	242	227
Sweetened .....	324	277	254	266	276
Dry whole milk .....	1,130	1,227	1,262	983	898
Ice cream and other frozen dairy products, total milk equivalent .....	14,058	15,265	15,094	15,248	15,856
Milk equivalent of butter and condensed milk used in ice cream .....	1,995	2,083	2,053	2,058	2,116
Net milk equivalent .....	12,063	13,182	13,041	13,190	13,740
Other manufactured products <sup>4</sup> .....	199	216	252	217	686
<b>Total manufactured products .....</b>	<b>90,559</b>	<b>92,493</b>	<b>92,795</b>	<b>91,585</b>	<b>92,970</b>
Available for use in fluid products:					
Sold by dealers .....	54,361	53,583	55,114	55,797	55,386
Sold by producers directly to consumers <sup>5</sup> .....	967	1,057	1,306	1,323	1,280
<b>Total available for fluid products .....</b>	<b>55,328</b>	<b>54,640</b>	<b>56,420</b>	<b>57,120</b>	<b>56,666</b>
Used on farms where produced:					
Fed to calves .....	1,408	1,305	1,230	1,189	1,166
Used for farm-churned butter .....	428	394	346	301	263
<b>Total used on farms .....</b>	<b>1,836</b>	<b>1,700</b>	<b>1,576</b>	<b>1,489</b>	<b>1,429</b>
<b>Residual<sup>6</sup> .....</b>	<b>2,991</b>	<b>4,978</b>	<b>4,779</b>	<b>4,319</b>	<b>5,680</b>
<b>Total utilization .....</b>	<b>150,714</b>	<b>153,811</b>	<b>155,570</b>	<b>154,513</b>	<b>156,745</b>

<sup>1</sup> Preliminary. <sup>2</sup> "Milk Production, Disposition and Income-Final Estimates 1993–97" released May 21, 1999 will contain 5-year revisions. <sup>3</sup> Whole milk equivalent (milkfat basis) of net imports of dairy manufacturing ingredients such as frozen cream and butterfat-sugar mixtures. <sup>4</sup> Whole milk equivalent of net out-of-storage movement of fluid and plastic cream during the year. A negative figure represents a net movement of cream into storage. <sup>5</sup> Whole milk equivalent of dry cream, malted milk powder, part-skim milk, dry or concentrated ice cream mix, dehydrated butterfat, and other miscellaneous products using milkfat. <sup>6</sup> Sales directly to consumers by producers who sell only milk from their own herds; also includes milk produced by institutional herds. <sup>7</sup> Includes minor miscellaneous uses and any inaccuracies in production and utilization estimates. NA-not available.

**Table 8-24.—Milk markets under Federal order program: Blend and Class I milk prices at 3.5 percent fat test, number of producers, producer deliveries, producer deliveries used in Class I, Class I percentage, average daily deliveries per producer, average fat test of milk delivered by markets, 1996 and 1997**

Federal milk order marketing area	Class I price per hundredweight <sup>1</sup>		Blend price per hundredweight <sup>1,2</sup>		Average number of producers		Total producer deliveries	
	1997	1996	1997	1996	1997	1996	1997	1996
	<i>Dollars</i>	<i>Dollars</i>	<i>Dollars</i>	<i>Dollars</i>	<i>Number</i>	<i>Number</i>	<i>Million Pounds</i>	<i>Million Pounds</i>
<b>NORTH ATLANTIC</b>								
New England <sup>3</sup> .....	15.03	16.88	13.74	15.32	3,896	4,019	5,452	5,383
New York-New Jersey <sup>4</sup> .....	14.92	16.75	13.47	15.10	10,300	10,855	11,772	11,721
Middle Atlantic <sup>5</sup> .....	14.81	16.73	13.40	14.97	5,000	4,990	6,481	6,092
<b>SOUTHEASTERN</b>								
Carolina <sup>6</sup> .....	14.87	16.70	14.34	16.15	1,574	1,633	2,798	2,623
Tenn. Valley <sup>7,8</sup> .....	14.29	16.41	13.80	15.81	1,563	1,574	1,061	1,372
Southeast <sup>9</sup> .....	14.89	16.70	14.27	15.99	4,287	3,929	5,651	5,108
Florida Markets <sup>10</sup> .....	15.68	17.46	15.05	16.87	427	476	2,909	2,777
<b>EAST NORTH CENTRAL</b>								
Mich. Upper Penin. <sup>11</sup> .....	13.12	15.00	12.85	14.61	81	87	66	64
Southern Mich. <sup>12,13</sup> .....	13.53	15.38	12.75	14.34	3,319	3,605	4,382	4,474
East. Ohio-W. Pa. <sup>14</sup> .....	13.79	15.63	12.94	14.64	3,474	3,691	3,318	3,282
Ohio Valley <sup>12,15</sup> .....	13.82	15.68	13.05	14.79	2,640	2,829	3,036	2,977
Indiana <sup>12,16</sup> .....	13.69	15.54	13.11	14.80	1,688	1,744	1,960	1,917
Chicago Regional <sup>12,17</sup> .....	13.17	15.04	12.25	13.64	14,472	15,424	12,799	12,523
Central Illinois <sup>18</sup> .....	13.39	15.24	13.11	14.92	207	206	186	175
S. Ill.-E. Mo. <sup>12,19</sup> .....	13.70	15.52	12.94	14.71	1,971	2,016	1,952	1,932
Louis.-Lex.-Evans. ....	13.93	15.71	13.52	15.21	1,597	1,368	1,189	1,042
<b>WEST NORTH CENTRAL</b>								
Upper Midwest <sup>12,20</sup> .....	12.98	14.86	12.16	13.50	10,804	11,820	8,612	8,402
Iowa <sup>12,21,22</sup> .....	13.56	15.19	12.54	13.95	3,143	3,119	2,732	2,695
Nebr.-W. Iowa <sup>12,23</sup> .....	13.53	15.39	12.59	13.99	1,297	1,297	1,619	1,490
G. Kans. City <sup>24</sup> .....	13.69	15.17	13.54	15.09	416	619	495	647
<b>WEST SOUTH CENTRAL</b>								
Southwest Plains <sup>12,25</sup> .....	14.53	16.42	13.38	14.94	2,400	2,902	3,079	3,514
Texas <sup>12,26</sup> .....	14.94	16.81	13.60	15.05	1,609	1,737	6,369	6,561
<b>MOUNTAIN</b>								
E. Colorado <sup>27</sup> .....	14.51	16.37	13.20	14.82	375	438	1,759	1,784
SW. Idaho-E. Oreg. <sup>12,28</sup> .....	13.27	15.14	11.89	13.57	403	407	2,220	2,622
Great Basin. <sup>12,29</sup> .....	13.67	15.54	12.71	14.33	571	608	2,360	2,540
Central Arizona <sup>30</sup> .....	14.30	16.14	13.03	14.46	103	104	2,436	2,383
New Mex.-W.Texas <sup>12,31</sup> .....	14.12	15.97	12.77	14.07	155	225	2,109	2,121
<b>PACIFIC</b>								
Pacific Northwest <sup>12,32</sup> .....	13.68	15.54	12.66	13.96	1,209	1,225	6,417	6,265

See footnotes at end of table.

**Table 8-24.—Milk markets under Federal order program: Blend and Class I milk prices at 3.5 percent fat test, number of producers, producer deliveries, producer deliveries used in Class I, Class I percentage, average daily deliveries per producer, average fat test of milk delivered by markets, 1996 and 1997-Continued**

Federal milk order marketing area	Producer Deliveries used in CL. I		Class I utilization		Daily deliveries per producer		Average fat test	
	1997	1996	1997	1996	1997	1996	1997	1996
	Million Pounds	Million Pounds	Percent	Percent	Pounds	Pounds	Percent	Percent
<b>NORTH ATLANTIC</b>								
New England <sup>3</sup> .....	2,600	2,588	47.7	48.1	3,833	3,658	3.70	3.72
New York-New Jersey <sup>4</sup> .....	4,716	4,784	40.1	40.8	3,131	2,949	3.66	3.70
Middle Atlantic <sup>5</sup> .....	2,950	2,903	45.5	47.7	3,548	3,347	3.64	3.71
<b>SOUTHEASTERN</b>								
Carolina <sup>6</sup> .....	2,231	2,165	79.7	82.5	4,914	4,433	3.66	3.67
Tenn. Valley <sup>7,8</sup> .....	824	1,079	77.7	78.6	2,494	2,385	3.52	3.61
Southeast <sup>9</sup> .....	4,273	4,120	75.6	80.7	3,624	3,553	3.58	3.59
Florida Markets <sup>10</sup> .....	2,460	2,440	84.6	87.8	27,340	23,091	3.57	3.59
<b>EAST NORTH CENTRAL</b>								
Mich. Upper Penin. <sup>11</sup> .....	51	50	77.2	78.3	2,241	2,019	3.68	3.70
Southern Mich. <sup>12,13</sup> .....	2,050	2,071	46.8	46.3	3,617	3,392	3.64	3.68
East. Ohio-W. Pa. <sup>14</sup> .....	1,731	1,754	52.2	53.5	2,617	2,430	3.71	3.75
Ohio Valley <sup>12,15</sup> .....	1,655	1,678	54.5	56.4	3,152	2,876	3.69	3.73
Indiana <sup>12,16</sup> .....	1,215	1,188	62.0	62.0	3,183	3,010	3.70	3.73
Chicago Regional <sup>12,17</sup> .....	2,747	2,554	21.5	20.4	2,390	2,190	3.75	3.78
Central Illinois <sup>18</sup> .....	148	142	79.5	81.2	2,473	2,330	3.74	3.74
S. Ill.-E. Mo. <sup>12,19</sup> .....	1,034	1,103	53.0	57.1	2,705	2,618	3.72	3.73
Louis.-Lex.-Evans. <sup>20</sup> .....	912	811	76.7	77.9	2,072	2,084	3.62	3.63
<b>WEST NORTH CENTRAL</b>								
Upper Midwest <sup>12,20</sup> .....	1,609	1,647	18.7	19.6	2,699	2,521	3.74	3.75
Iowa <sup>12,21,22</sup> .....	671	973	.....	36.1	2,858	2,639	3.72	3.75
Nebr.-W. Iowa <sup>12,23</sup> .....	612	610	37.8	41.0	3,766	3,472	3.70	3.74
G. Kans. City <sup>24</sup> .....	.....	.....	.....	.....	3,207	2,919	3.69	3.70
<b>WEST SOUTH CENTRAL</b>								
Southwest Plains <sup>12,25</sup> .....	1,466	1,503	47.6	42.8	3,527	3,307	3.62	3.62
Texas <sup>12,26</sup> .....	3,282	3,260	51.5	49.7	10,805	10,322	3.56	3.57
<b>MOUNTAIN</b>								
E. Colorado <sup>27</sup> .....	813	812	46.2	45.5	13,235	11,162	3.59	3.66
SW. Idaho-E. Oreg. <sup>12,28</sup> .....	183	180	8.3	6.9	19,787	17,521	3.56	3.61
Great Basin. <sup>29</sup> .....	880	877	37.3	34.5	11,331	11,430	3.59	3.63
Central Arizona <sup>30</sup> .....	1,019	1,031	41.8	43.3	64,897	62,889	3.56	3.59
New Mex.-W. Texas <sup>12,31</sup> .....	648	681	30.7	32.1	37,289	27,749	3.53	3.56
<b>PACIFIC</b>								
Pacific Northwest <sup>12,32</sup> .....	2,134	2,130	33.3	34.0	14,563	14,005	3.64	3.64

<sup>1</sup> Prices are for milk of 3.5 percent butterfat content and for the major city or pricing point in the marketing area. <sup>2</sup> For individual handler pools, figures are the weighted average of blend prices for all handlers. For markets with base-excess plans, figures are the weighted average of base and excess prices. For markets with multiple pricing plans, figures are the basic formula price plus the weighted average differential price. <sup>3</sup> Zone 1 (Boston). Price at 201-210 mile zone: Class I and blend are 72 cents less. <sup>4</sup> New York metropolitan area. Prices at 201-210 mile zone: Class I and blend 72 cents less. <sup>5</sup> Philadelphia, Baltimore, and Washington, D.C. Price excludes a 6-cent delivery differential applicable to milk delivered to Philadelphia. <sup>6</sup> Charlotte. <sup>7</sup> Bristol, Chattanooga, and Knoxville. <sup>8</sup> Effective 10/1/97, the order regulating this marketing area was terminated. Figures for 1997 are for January-September. <sup>9</sup> Zone 7 (Atlanta and Birmingham). <sup>10</sup> Price data are for Tampa Bay. Remaining data are a summation or weighted average of the data for the Tampa Bay, Upper Florida, and Southeastern Florida marketing areas. The data are combined in order to mask restricted data. <sup>11</sup> Zone II (Marquette). <sup>12</sup> Because the blend price adjusted for location was equal to or less than the Class II, III, or III-A price in certain zones of these markets in some months, in 1996 and 1997 handlers elected not to pool milk that normally would have been pooled under those orders. <sup>13</sup> Zone I, Detroit. Price excludes direct delivery differential applicable to milk delivered to Detroit of 10 cents. <sup>14</sup> Cleveland and Pittsburgh. <sup>15</sup> Zone 3 (Columbus). <sup>16</sup> Indianapolis. <sup>17</sup> Zone I (Chicago). <sup>18</sup> Peoria. <sup>19</sup> Base zone (Alton). <sup>20</sup> Zone I (Minneapolis). <sup>21</sup> Zone 1 (Des Moines). <sup>22</sup> For August-October 1997, the data for producer deliveries used in Class I were restricted and therefore excluded from the applicable annual figures. <sup>23</sup> Zone 1 (Omaha). <sup>24</sup> Kansas City and Topeka. Note: Price data are for Greater Kansas City. Other data are a summation or weighted average of the data for the Greater Kansas City, Eastern South Dakota, and Black Hills (through September 1996) marketing areas. Effective October 1, 1996, the Black Hills Federal milk order was terminated. Consequently, the Class I use data for the two remaining orders became confidential and could not be released. <sup>25</sup> Zone I (Oklahoma City). <sup>26</sup> Zone I (Dallas). <sup>27</sup> Denver. Note: Price data are for Eastern Colorado. Other data are a summation or weighted average of the data for the Eastern Colorado and Western Colorado marketing areas. <sup>28</sup> Boise, Idaho. <sup>29</sup> Salt Lake City, Utah. <sup>30</sup> Phoenix. <sup>31</sup> Albuquerque, Santa Fe, and El Paso. <sup>32</sup> Zone I (Seattle and Portland).

**Table 8-25.—Fluid milk and cream: Total and per capita consumption, United States, 1988–97<sup>1</sup>**

Year	Consumption		Year	Consumption	
	Total	Per capita		Total	Per capita
	<i>Billion pounds</i>	<i>Pounds</i>		<i>Billion pounds</i>	<i>Pounds</i>
1988 .....	57.3	234	1993 .....	58.2	226
1989 .....	58.3	236	1994 .....	58.9	226
1990 .....	58.2	233	1995 .....	58.7	223
1991 .....	58.8	233	1996 .....	59.3	224
1992 .....	58.8	230	1997 .....	59.2	221

<sup>1</sup> Sales of beverage, cream, and specialty fluid products plus farm household use. ERS, Animal Products Branch, (202) 694-5187.

**Table 8-26.—Dairy products: Average price per pound for specified products, 1993–97**

Item and market	1993	1994	1995	1996	1997
	<i>Dollars</i>	<i>Dollars</i>	<i>Dollars</i>	<i>Dollars</i>	<i>Dollars</i>
Butter, bulk, wholesale selling prices, Chicago:					
Grade AA .....	0.7693	0.7068	0.8188	1.0824	1.1625
Grade A .....	0.7436	0.6737	0.7559	1.0035	1.0706
Butter <sup>1</sup> Chicago Mercantile Exchange:					
Grade AA:					
High .....	0.8125	0.7575	1.1000	1.5300	1.9500
Low .....	0.6400	0.6500	0.6500	0.7200	0.9000
Grade A:					
High .....	0.7625	0.7100	1.0300	1.4700	1.8200
Low .....	0.6300	0.6300	0.6300	0.6400	0.8000
Cheese, Cheddar, f.o.b. Wisconsin Assembly Points:					
Barrels .....	1.2612	TFEWR	TFEWR	1.4172	1.2523
40-pound blocks .....	1.3152	1.3145	1.3277	1.4914	1.3240
Cheese, cheddar, <sup>1</sup> National Cheese Exchange, Inc.: <sup>2</sup>					
Barrels:					
High .....	1.3650	1.3725	1.3825	1.6675	1.3625
Low .....	1.1200	1.1650	1.1725	1.1475	1.1225
40-pound blocks:					
High .....	1.3925	1.3975	1.4225	1.6950	1.4350
Low .....	1.1600	1.1825	1.2000	1.1875	1.1500
Nonfat dry milk, f.o.b.plant, Western States Production Area: <sup>3</sup>					
Low/medium heat .....		1.0460	1.0549	1.1708	1.0715
High heat .....	1.0740	1.0639	1.0721	1.2049	1.0979
Whey Powder, f.o.b. plant, Western States Production Area:					
Edible (nonhygroscopic) .....	0.1770	0.1835	0.2075	0.2202	0.2260

TFEWR: Too few to report; one or more monthly averages was not available. <sup>1</sup> Prices represent high and low for the year. <sup>2</sup> Trading on the National Cheese Exchange ended on 4/25/97. After this date, trading of Cheddar cheese occurred on the Chicago Mercantile Exchange. <sup>3</sup> Over this time period, the product reported in this price series has changed as follows. In 1993, all heat treatments were combined. In April 1994, the low/medium heat and high heat treatments were reported separately; figures shown are the average for April-December.

AMS, Dairy Programs, (202) 720-7461.



**Table 8-27.—Dairy products: Total disappearance, and total and per capita consumption, United States, 1988–97<sup>1</sup>**

Year	Butter			Cheese <sup>2</sup>			Condensed and evaporated milk <sup>3</sup>		
	Total disappearance	Consumption		Total disappearance	Consumption		Total disappearance	Consumption	
		Total	Per capita		Total	Per capita		Total	Per capita
	<i>Million pounds</i>	<i>Million pounds</i>	<i>Pounds</i>	<i>Million pounds</i>	<i>Million pounds</i>	<i>Pounds</i>	<i>Million pounds</i>	<i>Million pounds</i>	<i>Pounds</i>
1988 .....	1,144	1,102	4.5	5,886	5,810	23.7	927	857	3.5
1989 .....	1,240	1,077	4.4	5,959	5,885	23.8	819	759	3.1
1990 .....	1,165	1,095	4.4	6,231	6,156	24.6	828	787	3.1
1991 .....	1,209	1,101	4.4	6,393	6,321	25.0	854	800	3.2
1992 .....	1,464	1,114	4.4	6,720	6,642	26.0	872	820	3.2
1993 .....	1,530	1,209	4.7	6,853	6,766	26.2	843	785	3.0
1994 .....	1,463	1,255	4.8	7,094	6,994	26.8	734	668	2.6
1995 .....	1,329	1,186	4.5	7,279	7,174	27.3	699	608	2.3
1996 .....	1,190	1,148	4.3	7,478	7,364	27.7	690	611	2.3
1997 .....	1,155	1,114	4.2	7,646	7,510	28.0	771	693	2.6

Year	Ice cream (product weight)			Dry whole milk			Nonfat dry milk (human food)		
	Total disappearance	Consumption		Total disappearance	Consumption		Total disappearance	Consumption	
		Total	Per capita		Total	Per capita		Total	Per capita
	<i>Million pounds</i>	<i>Million pounds</i>	<i>Pounds</i>	<i>Million pounds</i>	<i>Million pounds</i>	<i>Pounds</i>	<i>Million pounds</i>	<i>Million pounds</i>	<i>Pounds</i>
1988 .....	4,234	4,234	17.3	167	143	.58	1,106	633	2.6
1989 .....	3,990	3,990	16.1	176	134	.54	882	526	2.1
1990 .....	3,953	3,953	15.8	177	159	.64	767	723	2.9
1991 .....	4,107	4,107	16.3	110	92	.36	826	656	2.6
1992 .....	4,157	4,157	16.3	167	124	.49	1,008	719	2.8
1993 .....	4,157	4,157	16.1	157	101	.39	946	634	2.5
1994 .....	4,205	4,205	16.1	164	103	.40	1,191	914	3.5
1995 .....	4,139	4,139	15.7	173	106	.40	1,280	910	3.5
1996 .....	4,217	4,217	15.9	137	97	.36	1,081	1,005	3.8
1997 .....	4,347	4,347	16.2	126	102	.38	1,171	906	3.4

<sup>1</sup>Total disappearance is based on production, imports, and change in stocks during the year. Production statistics for these commodities appear in other tables in this chapter. The total apparent consumption was obtained by subtracting ending stocks, shipments, and exports, from the total supply. The per capita consumption for each year was obtained by dividing the total apparent consumption by the number of persons. <sup>2</sup>Includes all kinds of cheese except cottage and full-skim American. <sup>3</sup>The evaporated milk is unskimmed, unsweetened, case goods. The condensed milk is unsweetened, unskimmed, bulk goods; and sweetened condensed milk, unskimmed, case and bulk goods.

ERS, Animal Products Branch, (202) 694-5187.

**Table 8-28.—Dairy products: Dec. 31 stocks, United States, 1988–97**

Year	Butter <sup>1,2</sup>	Cheese <sup>1,3</sup>	Canned milk <sup>1</sup>	Dry whole milk	Nonfat dry milk for human consumption <sup>1</sup>
	<i>1,000 pounds</i>	<i>1,000 pounds</i>	<i>1,000 pounds</i>	<i>1,000 pounds</i>	<i>1,000 pounds</i>
1988 .....	214,992	397,706	45,316	12,779	53,077
1989 .....	274,832	329,455	27,792	12,967	49,500
1990 .....	416,518	457,977	58,818	11,193	161,931
1991 .....	549,581	416,287	35,787	8,490	214,784
1992 .....	454,211	470,496	44,308	9,144	81,198
1993 .....	243,839	465,762	34,281	6,479	89,568
1994 .....	80,181	437,256	47,014	9,220	131,201
1995 .....	18,628	412,237	31,701	7,318	84,978
1996 .....	13,707	487,174	19,937	6,422	71,414
1997 .....	20,788	480,779	32,466	5,605	124,864

<sup>1</sup>Includes Government holdings. <sup>2</sup>Includes butter equivalent of butteroil held by CCC. <sup>3</sup>Excludes cottage and full-skim American cheese. Includes process American cheese held by CCC.

ERS, Animal Products Branch, (202)694-5187.

**Table 8-29.—Butter: Production in specified countries, 1995–97**

Continent and country	1995	1996	1997 <sup>1</sup>	Continent and country	1995	1996	1997 <sup>1</sup>
	<i>1,000 metric tons</i>	<i>1,000 metric tons</i>	<i>1,000 metric tons</i>		<i>1,000 metric tons</i>	<i>1,000 metric tons</i>	<i>1,000 metric tons</i>
North America:				Eastern Europe:			
Canada .....	88	93	93	Poland .....	160	163	160
Mexico .....	22	22	13	Romania .....	13	16	13
United States .....	588	573	533	Total .....	173	179	173
Total .....	698	688	639	Former USSR:			
South America:				Russia .....	488	419	290
Argentina .....	43	51	52	Ukraine .....	254	219	163
Brazil .....	60	65	70	Total .....	742	638	453
Total .....	103	116	122	North Africa:			
Europe:				Egypt .....	7	6	7
Austria .....	42	42	42	Total .....	7	6	7
Belgium and Luxembourg ....	73	91	87	Southeast Asia:			
Denmark .....	59	54	56	India <sup>2</sup> .....	1,200	1,300	1,400
Finland .....	54	53	54	Total .....	1,200	1,300	1,400
France .....	444	453	462	Asia:			
Germany .....	461	486	480	Japan .....	80	80	86
Greece .....	6	6	5	Total .....	80	80	86
Ireland .....	136	150	150	Oceania:			
Italy .....	77	81	81	Australia <sup>3</sup> .....	147	138	153
Netherlands .....	159	132	127	New Zealand <sup>4</sup> .....	297	280	309
Portugal .....	17	19	21	Total .....	444	418	462
Spain .....	19	25	23	Grand total .....	5,221	5,217	5,130
Sweden .....	32	28	30				
United Kingdom .....	154	130	130				
Total .....	1,733	1,750	1,748				
Other Europe:							
Switzerland .....	41	42	40				
Total .....	41	42	40				

<sup>1</sup> Preliminary. <sup>2</sup> Year ending April 1 of the year shown. <sup>3</sup> Year ending June 30 of the year shown. <sup>4</sup> Year ending May 31 of the year shown.

FAS, Dairy, Livestock, and Poultry Division, (202) 720-3761. Prepared or estimated on the basis of official statistics of foreign governments, other foreign source materials, reports of U.S. Agricultural Counselors, Attaches, and Foreign Service Officers, results of office research, and related information.

**Table 8-30.—Dairy products: United States imports by type of product, 1988–97**

Year	Dried milk <sup>1</sup>	Cheese				Butter <sup>4</sup>	Casein <sup>5</sup>
		Swiss <sup>2</sup>	Cheddar <sup>3</sup>	Other	Total		
	<i>Metric tons</i>	<i>Metric tons</i>	<i>Metric tons</i>	<i>Metric tons</i>	<i>Metric tons</i>	<i>Metric tons</i>	<i>Metric tons</i>
1988 .....	988	23,306	5,438	85,833	114,577	1,020	73,676
1989 .....	1,196	26,495	5,737	94,369	126,601	2,038	81,794
1990 .....	810	30,563	8,970	97,553	137,086	1,464	85,119
1991 .....	1,339	27,556	8,726	100,211	136,493	1,374	85,576
1992 .....	1,238	24,466	8,186	97,013	129,665	947	91,340
1993 .....	1,268	29,265	9,130	107,346	145,741	1,706	77,411
1994 .....	1,593	29,554	7,802	119,349	156,705	1,245	89,185
1995 .....	1,128	26,879	9,472	118,045	154,396	697	90,392
1996 .....	3,968	28,608	12,393	112,269	153,270	4,783	94,647
1997 <sup>6</sup> .....	6,080	24,778	11,566	105,141	141,485	10,956	90,986

<sup>1</sup> Includes whole and skimmed milk. <sup>2</sup> Includes Emmenthaler with eye-formation. <sup>3</sup> Includes American and Colby cheese. <sup>4</sup> Includes butter oil. <sup>5</sup> Includes caseinates. <sup>6</sup> Preliminary.

FAS, Dairy, Livestock, and Poultry Division, (202) 720-3761. Compiled from reports of the U.S. Department of Commerce.

**Table 8-31.—Cheese: Production in specified countries, 1995–97**

Continent and country	1995	1996	1997 <sup>1</sup>	Continent and country	1995	1996	1997 <sup>1</sup>
	<i>1,000 metric tons</i>	<i>1,000 metric tons</i>	<i>1,000 metric tons</i>		<i>1,000 metric tons</i>	<i>1,000 metric tons</i>	<i>1,000 metric tons</i>
<b>North America:</b>				<b>Eastern Europe:</b>			
Canada .....	277	289	329	Poland .....	123	133	158
Mexico .....	116	110	112	Romania .....	90	92	95
United States .....	3138	3274	3345	<b>Total .....</b>	<b>213</b>	<b>225</b>	<b>253</b>
<b>Total .....</b>	<b>3,531</b>	<b>3,673</b>	<b>3,786</b>	<b>Former USSR:</b>			
<b>South America:</b>				Russia .....	217	173	165
Argentina .....	370	390	415	Ukraine .....	72	60	45
Brazil .....	360	385	405	<b>Total .....</b>	<b>289</b>	<b>233</b>	<b>210</b>
Venezuela .....	76	77	70	<b>North Africa:</b>			
<b>Total .....</b>	<b>806</b>	<b>852</b>	<b>890</b>	Egypt .....	310	325	370
<b>EU:</b>				<b>Total .....</b>	<b>310</b>	<b>325</b>	<b>370</b>
Austria .....	79	81	87	<b>Asia:</b>			
Belgium and Luxembourg .....	54	64	73	Japan .....	31	33	34
Denmark .....	311	298	290	<b>Total .....</b>	<b>31</b>	<b>33</b>	<b>34</b>
Finland .....	83	83	79	<b>Oceania:</b>			
France .....	1,579	1,594	1,645	Australia <sup>2</sup> .....	241	268	285
Germany .....	875	947	988	New Zealand <sup>3</sup> .....	197	230	240
Greece .....	200	195	190	<b>Total .....</b>	<b>438</b>	<b>498</b>	<b>525</b>
Ireland .....	80	92	89	<b>World total .....</b>	<b>11,349</b>	<b>11,686</b>	<b>12,046</b>
Italy .....	942	950	985				
Netherlands .....	680	688	693				
Portugal .....	70	71	72				
Spain .....	165	160	162				
Sweden .....	128	127	115				
United Kingdom .....	354	364	374				
<b>Total EU .....</b>	<b>5,600</b>	<b>5,714</b>	<b>5,842</b>				
<b>Other Western Europe:</b>							
Switzerland .....	131	133	136				
<b>Total .....</b>	<b>131</b>	<b>133</b>	<b>136</b>				

<sup>1</sup> Preliminary. <sup>2</sup> Year ending June 30. <sup>3</sup> Year ending May 31.

FAS, Dairy, Livestock and Poultry Division, (202) 720–3761. Prepared or estimated on the basis of official statistics of foreign governments, other foreign source materials, reports of U.S. Agricultural Counselors, Attaches, and Foreign Service Officers, results of office research, and related information.

**Table 8-32.—Dairy products: United States imports by country of origin, 1995–97**

Commodity and country of origin	1995	1996	1997 <sup>1</sup>	Commodity and country of origin	1995	1996	1997 <sup>1</sup>
	<i>Metric tons</i>	<i>Metric tons</i>	<i>Metric tons</i>		<i>Metric tons</i>	<i>Metric tons</i>	<i>Metric tons</i>
<b>Cheese, all types:</b>				<b>Cheese, cheddar<sup>2</sup>:</b>			
Canada .....	5,020	4,938	4,720	Canada .....	828	1,112	1,112
Argentina .....	4,895	2,322	6,027	Denmark .....	142	112	10
Austria .....	4,345	2,997	1,311	Ireland .....	150	154	129
Belgium and Luxembourg .....	806	811	1,062	United Kingdom .....	165	540	246
Denmark .....	13,272	13,430	11,067	Australia .....	1,879	2,468	2,142
Finland .....	6,760	6,412	5,507	New Zealand .....	5,880	7,652	7,638
France .....	10,589	11,183	13,743	Other countries ..	428	355	289
Germany, Fed. Rep. of .....	1,902	6,564	5,824	<b>Total .....</b>	<b>9,472</b>	<b>12,393</b>	<b>11,566</b>
Ireland .....	2,129	3,648	2,526	<b>Cheese, Swiss<sup>3</sup>:</b>			
Italy .....	28,734	27,581	25,673	Canada .....	272	1,113	321
Netherlands .....	9,613	9,578	7,911	Austria .....	2,159	1,807	758
Norway .....	7,095	6,561	7,323	Denmark .....	2,425	1,946	1,545
Portugal .....	568	575	620	Finland .....	6,114	6,297	5,450
Sweden .....	887	445	529	France .....	891	1,105	1,147
Switzerland .....	8,967	5,795	5,801	Germany, Fed. Rep. of .....	289	4,625	3,235
United Kingdom .....	4,757	9,207	2,740	Netherlands .....	174	95	203
Israel .....	1,239	1,166	663	Norway .....	6,820	6,345	6,828
Czech Republic ..	56	140	68	Switzerland .....	5,727	3,077	3,518
Hungary .....	1,236	447	310	Other countries ..	2,008	2,198	1,773
Poland .....	8,497	4,667	2,693	<b>Total .....</b>	<b>26,879</b>	<b>28,608</b>	<b>24,778</b>
Australia .....	6,585	5,799	6,364				
New Zealand .....	17,421	18,857	19,744				
Other countries ..	9,023	10,147	9,259				
<b>Total .....</b>	<b>154,396</b>	<b>153,270</b>	<b>141,485</b>				

<sup>1</sup> Preliminary. <sup>2</sup> Includes American and Colby cheese. <sup>3</sup> Includes Emmentaler with eye-formation.

FAS, Dairy, Livestock and Poultry Division, (202) 720–3761. Compiled from reports of the U.S. Department of Commerce.

**Table 8-33.—Dairy products: Exports by principal exporting countries, 1995–97<sup>1</sup>**

Commodity and country	1995	1996	1997 <sup>2</sup>	Commodity and country	1995	1996	1997 <sup>2</sup>
	<i>Metric tons</i>	<i>Metric tons</i>	<i>Metric tons</i>		<i>Metric tons</i>	<i>Metric tons</i>	<i>Metric tons</i>
<b>Butter:</b>				<b>Milk, dried whole:</b>			
United States .....	64	19	18	United States .....	29	18	10
Belgium/Luxembourg .....	34	18	20	Argentina .....	58	55	62
Denmark .....	20	21	21	Belgium/Luxembourg .....	131	60	26
France .....	19	46	34	Denmark .....	90	82	85
Germany, Fed. Rep. of .....	26	12	25	France .....	73	122	138
Ireland .....	9	24	25	Ireland .....	25	25	14
Netherlands .....	46	30	34	Netherlands .....	224	177	153
Poland .....	10	11	3	United Kingdom .....	50	56	53
Australia <sup>3</sup> .....	85	75	111	Australia <sup>3</sup> .....	93	93	109
New Zealand <sup>4</sup> .....	234	230	315	New Zealand <sup>4</sup> .....	318	275	346
Other .....	124	155	147	Other .....	36	42	66
<b>Total .....</b>	<b>671</b>	<b>641</b>	<b>753</b>	<b>Total .....</b>	<b>1,127</b>	<b>1,005</b>	<b>1,062</b>
<b>Cheese<sup>5</sup>:</b>				<b>Milk, nonfat dry milk:</b>			
United States .....	29	32	37	Canada .....	44	35	30
Denmark .....	115	85	84	United States .....	164	32	117
France .....	105	112	96	Belgium/Luxembourg .....	112	58	42
Germany, Fed. Rep. of .....	95	113	135	France .....	23	37	39
Italy .....	37	42	45	Germany, Fed. Rep. of .....	73	43	47
Netherlands .....	111	101	87	Ireland .....	46	34	50
Switzerland .....	64	57	61	Netherlands .....	86	26	47
Australia <sup>3</sup> .....	111	111	125	Poland .....	98	77	112
New Zealand <sup>4</sup> .....	130	173	236	Australia <sup>3</sup> .....	188	167	205
Other .....	172	115	104	New Zealand <sup>4</sup> .....	167	150	215
<b>Total .....</b>	<b>969</b>	<b>941</b>	<b>1,010</b>	Other .....	107	108	140
				<b>Total .....</b>	<b>1,108</b>	<b>767</b>	<b>1,044</b>

<sup>1</sup> Within the European Union, exports to other members are not included. <sup>2</sup> Preliminary. <sup>3</sup> Year ending June 30. <sup>4</sup> Year ending May 31. <sup>5</sup> Excludes fresh cheese.

FAS, Dairy, Livestock and Poultry Division, (202) 720-3761. Prepared on the basis of official statistics of foreign governments, other foreign source materials, reports of U.S. Agricultural Counselors, Attaches, and Foreign Service Officers, results of office research, and related information.

**Table 8-34.—Dairy products: United States exports by type of product, 1988–97**

Year	Butter	Cheese	Milk and cream			
			Evaporated and condensed	WMP—Whole dried	Nonfat dry milk	Ice cream
	<i>Metric tons</i>	<i>Metric tons</i>	<i>Metric tons</i>	<i>Metric tons</i>	<i>Metric tons</i>	<i>Metric tons</i>
1988 .....	6,804	13,602	3,478	8,394	218,356	NA
1989 .....	27,142	10,111	13,778	39,976	117,120	7,059
1990 .....	52,449	11,885	3,934	5,113	7,722	12,698
1991 .....	16,148	12,110	3,302	8,561	43,501	21,813
1992 .....	66,896	15,206	8,800	28,203	74,577	32,583
1993 .....	92,300	16,346	10,734	37,576	75,708	30,865
1994 .....	45,487	22,499	19,595	29,230	49,045	36,320
1995 .....	37,689	29,519	41,378	64,297	59,311	37,827
1996 .....	20,795	32,428	39,580	16,181	18,422	39,765
1997 <sup>1</sup> .....	15,025	37,436	9,344	48,609	62,070	36,767

<sup>1</sup> Preliminary. NA—not available. Ice cream data before 1989 in dollar value only.

FAS, Dairy, Livestock and Poultry Division, (202) 720-3761. Compiled from reports of the U.S. Department of Commerce.

**Table 8-35.—Dairy products: United States exports by country of destination, 1995–97**

Commodity and country of destination	1995	1996	1997 <sup>1</sup>	Commodity and country of destination	1995	1996	1997 <sup>1</sup>
	<i>Metric tons</i>	<i>Metric tons</i>	<i>Metric tons</i>		<i>Metric tons</i>	<i>Metric tons</i>	<i>Metric tons</i>
<b>Cheese, all types:</b>				<b>Milk, nonfat dry:</b>			
Algeria .....	1,952	0	811	Algeria .....	34,912	2,167	5,553
Australia .....	58	251	196	Brazil .....	1,064	157	872
Bahamas .....	126	96	341	Colombia .....	19	306	1,731
Bermuda .....	238	234	309	Chile .....	981	7	764
Belize .....	60	40	46	Egypt .....	793	973	4,346
Canada .....	3,106	3,467	4,057	El Salvador .....	448	38	421
Cayman Island ..	32	14	87	Ecuador .....	0	60	393
Colombia .....	208	284	288	Guatemala .....	178	52	100
Dominican Rep ..	304	378	491	Indonesia .....	419	34	6,131
Egypt .....	185	111	103	Hong Kong .....	786	83	191
Guatemala .....	384	40	440	Jamaica .....	0	2	1,386
Haiti .....	62	93	138	Mexico .....	13,359	5,442	1,850
Hong Kong .....	366	310	468	Peru .....	930	543	1,112
Indonesia .....	11	17	126	Philippines .....	624	1,865	6,811
Jamaica .....	169	278	290	Taiwan .....	345	100	447
Japan .....	5,045	6,784	6,002	South Africa .....	17	0	49
Korea .....	3,035	4,069	4,819	Other Countries ..	4,436	6,593	29,913
Leeward-Wind-ward Is .....	22	22	43	<b>Total .....</b>	<b>59,311</b>	<b>18,422</b>	<b>62,070</b>
Mexico .....	4,636	4,726	5,586	<b>Infants dietary supplements, dry milk base:</b>			
Netherlands .....	32	142	818	Canada .....	1,592	5,460	6,793
Netherland Antilles .....	151	145	83	Dominican Republic .....	59	165	161
Panama .....	131	105	142	Bermuda .....	9	3	69
Philippines .....	152	421	762	Bahamas .....	111	118	114
Saudi Arabia .....	804	817	794	Haiti .....	101	67	136
Singapore .....	236	290	384	Mexico .....	252	827	2,050
South Africa .....	84	74	59	Panama .....	67	58	60
Taiwan .....	274	297	274	Jordan .....	195	198	190
Trinidad and Tobago .....	124	112	203	Russia .....	26	248	203
Venezuela .....	278	366	645	Taiwan .....	6,002	4,483	10,485
Other countries ..	7,254	8,445	8,631	Hong Kong .....	2,690	7,460	4,809
<b>Total .....</b>	<b>29,519</b>	<b>32,428</b>	<b>37,436</b>	Malaysia .....	106	158	634
<b>Butter:</b>				France .....	0	3	0
Bahamas .....	137	117	117	Spain .....	1	5	7
Canada .....	311	427	427	Singapore .....	126	203	424
Dominican Rep ..	140	79	79	Trinidad & Tobago .....	108	166	202
Mexico .....	1,973	948	948	Australia .....	17	24	78
Mongolia .....	0	0	0	Costa Rica .....	31	51	80
Poland .....	0	0	0	Bulgaria .....	0	0	0
Russia .....	12,971	6,066	6,066	Thailand .....	27	199	738
Byelarus .....	0	0	0	Other countries ..	1,213	2,499	5,660
Armenia, Rep. of ..	0	0	0	<b>Total .....</b>	<b>12,733</b>	<b>22,395</b>	<b>32,893</b>
Albania .....	0	0	0				
Romania .....	0	0	0				
Other countries ..	22,157	13,158	7,388				
<b>Total .....</b>	<b>37,689</b>	<b>20,795</b>	<b>15,025</b>				

<sup>1</sup> Preliminary.  
FAS, Dairy, Livestock and Poultry Division, (202) 720-3761. Compiled from reports of the U.S. Department of Commerce.

**Table 8-36.—Dairy products: Price-support operations, United States, 1989–98**

Marketing year <sup>1</sup>	Manufacturing milk		Product purchase price per pound <sup>2</sup>		
	Support level	Average price received by farmers per cwt.	Butter <sup>3</sup>	Cheddar cheese <sup>4</sup>	Nonfat milk, spray process <sup>5</sup>
	At national average milkfat test, per cwt.				
	Dollars	Dollars	Cents	Cents	Cents
1988–89 .....	( <sup>6</sup> ) 11.10 ( <sup>7</sup> ) 10.60 10.60 ( <sup>8</sup> ) 10.10	..... ..... ..... 13.28	132.00 ( <sup>7</sup> ) 120.50 120.50 ( <sup>8</sup> ) 109.25 ( <sup>9</sup> ) 98.25	( <sup>6</sup> ) 120.25 ( <sup>7</sup> ) 115.50 115.50 ( <sup>8</sup> ) 111.00 ( <sup>9</sup> ) 111.00	( <sup>6</sup> ) 79.00 79.00 79.00 ( <sup>9</sup> ) 85.00 85.00 85.00
1989–90 .....	10.10 10.10	10.67 12.03	98.25 98.25 ( <sup>10</sup> ) 87.25 ( <sup>11</sup> ) 76.25 76.25	111.00 111.00 ( <sup>10</sup> ) 111.37 ( <sup>11</sup> ) 611.75 111.75	85.00 85.00 ( <sup>10</sup> ) 91.20 ( <sup>11</sup> ) 97.30 97.30
1992–93 .....	10.10	11.60	( <sup>12</sup> ) 65.00 65.00 65.00 65.00	( <sup>12</sup> ) 112.00 112.00 112.00 112.00	( <sup>12</sup> ) 103.40 103.40 103.40 103.40
1993–94 .....	10.10	11.98	65.00	112.00	103.40
1994–95 .....	10.10	11.52	65.00	112.00	103.40
1995–96 .....	10.10	.....	65.00	112.00	103.40
1996–97 .....	( <sup>13</sup> ) 10.35 10.35	( <sup>14</sup> ) 13.50	65.00 65.00	( <sup>13</sup> ) 114.50 114.50	( <sup>13</sup> ) 106.50 106.50
1997–98 .....	( <sup>15</sup> ) 10.20 10.20	11.88	65.00 65.00	( <sup>14</sup> ) 113.00 113.00	( <sup>14</sup> ) 104.70 104.70
.....	( <sup>16</sup> ) 10.05	13.28	65.00	( <sup>16</sup> ) 111.50	( <sup>16</sup> ) 102.80

<sup>1</sup> October 1–September 30. <sup>2</sup> Announced purchase prices for products in bulk containers. <sup>3</sup> Through March 31, 1985, indicated price is for Chicago (which represents an approximate U.S. average purchase price) based on New York prices less 80 percent of the lowest rail freight rate from Chicago to New York. Effective April 1, 1985, single nationwide price. <sup>4</sup> U.S. Grade A or higher, standard moisture basis. <sup>5</sup> U.S. Extra Grade, not more than 3.5 percent moisture content. Prices quoted are for product in 50-lb bags. <sup>6</sup> Effective April 1, 1989. <sup>7</sup> Effective July 1, 1989. <sup>8</sup> Effective January 1, 1990. <sup>9</sup> Effective April 21, 1990. <sup>10</sup> Effective January 17, 1992. <sup>11</sup> Effective May 13, 1992. <sup>12</sup> Effective July 7, 1993. <sup>13</sup> Effective January 1, 1996. <sup>14</sup> Basic Formula Price began May 1995 to date. <sup>15</sup> Effective January 1, 1997. <sup>16</sup> Effective January 1, 1998.

FSA, Dairy & Sweeteners Analysis, (202) 720–5653.

**Table 8-37.—Chickens: Number and value, United States, Dec. 1, 1989–98<sup>1</sup>**

Year	Layers 1 year old and older	Layers 20 weeks old but less than 1 year	Pullets		Other chickens	All chickens	Value per head	Total value
			13 weeks to 20 weeks old	Under 13 weeks old				
	Thousands	Thousands	Thousands	Thousands	Thousands	Thousands	Dollars	1,000 dollars
1989 .....	118,839	153,230	35,769	43,415	5,988	357,241	2.16	772,798
1990 .....	119,551	153,916	34,222	38,945	6,545	353,179	2.29	807,572
1991 .....	117,178	162,943	34,272	42,344	6,857	363,594	2.30	834,656
1992 .....	121,103	163,397	34,710	45,160	7,113	371,483	2.26	838,200
1993 .....	131,688	158,938	33,833	47,941	7,240	379,640	2.37	898,059
1994 .....	135,093	163,432	33,159	46,694	7,369	385,747	2.34	902,815
1995 .....	133,841	165,230	34,004	47,365	7,637	388,077	2.41	934,905
1996 .....	138,048	165,874	33,518	48,054	7,243	392,737	2.65	1,039,071
1997 .....	140,966	171,171	35,578	54,766	7,549	410,030	2.72	1,113,183
1998 <sup>2</sup> .....	150,778	169,916	39,664	56,054	7,682	424,094	2.69	1,139,984

<sup>1</sup> Does not include commercial broilers. <sup>2</sup> Preliminary.  
NASS Livestock and Economics Branch, (202) 720-6146.

**Table 8-38.—Chickens: Layers, by State and United States, Dec. 1, 1997–98**

State	Layers					
	Layers 1 year old and older		Layers 20 weeks old but less than 1 year		Total	
	1997	1998 <sup>1</sup>	1997	1998 <sup>1</sup>	1997	1998 <sup>1</sup>
	<i>Thou-</i> <i>sands</i>	<i>Thou-</i> <i>sands</i>	<i>Thou-</i> <i>sands</i>	<i>Thou-</i> <i>sands</i>	<i>Thou-</i> <i>sands</i>	<i>Thou-</i> <i>sands</i>
AL .....	4,292	4,761	6,200	6,346	10,492	11,107
AR .....	6,070	5,010	8,351	9,722	14,421	14,732
CA .....	15,270	14,350	11,010	11,558	26,280	25,908
CO .....	1,910	2,250	1,760	1,487	3,670	3,737
CT .....	1,141	1,227	2,318	1,863	3,459	3,090
DE .....	150	207	250	177	400	384
FL .....	6,216	6,179	4,522	4,544	10,738	10,723
GA .....	6,680	8,410	13,840	13,139	20,520	21,549
HI .....	465	408	263	199	728	607
ID .....	546	615	385	312	931	927
IL .....	1,534	1,880	1,929	1,049	3,463	2,929
IN .....	10,238	11,324	12,076	10,876	22,314	22,200
IA .....	11,655	11,903	10,130	13,232	21,785	25,135
KS .....	505	1,052	843	547	1,348	1,599
KY .....	1,450	1,550	1,650	2,200	3,100	3,750
LA .....	940	670	963	1,322	1,903	1,992
ME .....	2,256	2,511	2,523	2,710	4,779	5,221
MD .....	1,518	1,517	1,644	2,131	3,162	3,648
MA .....	72	183	473	259	545	442
MI .....	2,343	3,310	2,817	2,441	5,160	5,751
MN .....	6,740	5,400	5,215	6,840	11,955	12,240
MS .....	2,487	2,211	4,424	4,808	6,911	7,019
MO .....	3,490	4,295	3,605	2,395	7,095	6,690
MT .....	35	50	255	240	290	290
NE .....	6,011	6,046	3,979	4,567	9,990	10,613
NH .....	53	42	106	87	159	129
NJ .....	931	1,113	1,023	756	1,954	1,869
NM .....	636	692	536	384	1,172	1,076
NY .....	1,070	1,530	2,400	2,080	3,470	3,610
NC .....	4,307	4,126	7,306	7,325	11,613	11,451
ND .....	100	100	140	130	240	230
OH .....	10,863	13,977	16,195	14,530	27,058	28,507
OK .....	1,909	1,620	2,166	2,420	4,075	4,040
OR .....	1,800	1,755	1,200	1,210	3,000	2,965
PA .....	9,400	10,401	13,605	12,254	23,005	22,655
RI .....	10	32	61	45	71	77
SC .....	2,205	2,211	2,424	2,534	4,629	4,745
SD .....	800	1,825	1,370	410	2,170	2,235
TN .....	316	510	922	780	1,238	1,290
TX .....	5,630	6,759	11,545	10,848	17,175	17,607
UT .....	939	1,000	759	830	1,698	1,830
VT .....	9	12	188	180	197	192
VA .....	704	1,292	2,759	2,453	3,463	3,745
WA .....	2,815	2,513	2,156	2,538	4,971	5,051
WV .....	285	305	760	832	1,045	1,137
WI .....	1,994	1,289	1,989	2,321	3,983	3,610
WY .....	8	8	4	4	12	12
Other States <sup>2</sup> ...	168	347	132	1	300	348
US .....	140,966	150,778	171,171	169,916	312,137	320,694

<sup>1</sup> Preliminary. <sup>2</sup> AK, AZ, and NV combined to avoid disclosure of individual operations. NASS, Livestock and Economics Branch, (202) 720-6146.

**Table 8-39.—Chickens: Pullets not of laying age and other chickens, by State and United States, Dec. 1, 1997–98**

State	Pullets 13 weeks old and older but less than 20 weeks		Pullet chicks and pullets under 13 weeks of age		Other chickens	
	1997	1998 <sup>1</sup>	1997	1998 <sup>1</sup>	1997	1998 <sup>1</sup>
	<i>Thou-</i> <i>sands</i>	<i>Thou-</i> <i>sands</i>	<i>Thou-</i> <i>sands</i>	<i>Thou-</i> <i>sands</i>	<i>Thou-</i> <i>sands</i>	<i>Thou-</i> <i>sands</i>
AL .....	2,066	1,980	2,500	2,492	1,033	1,034
AR .....	3,486	3,252	3,976	4,316	1,262	1,200
CA .....	1,000	1,500	3,080	2,500	140	85
CO .....	229	180	643	550	176	130
CT .....	299	206	550	653	1	10
DE .....	90	40	170	43	25	28
FL .....	1,045	707	1,133	1,262	56	93
GA .....	3,120	3,693	5,080	4,531	1,190	1,353
HI .....	55	77	80	63	0	0
ID .....	51	85	241	240	5	4
IL .....	174	197	380	329	39	29
IN .....	1,355	1,977	3,479	5,133	41	47
IA .....	2,707	2,958	3,423	3,134	50	39
KS .....	245	162	457	127	2	2
KY .....	580	580	820	780	200	190
LA .....	165	475	370	95	82	88
ME .....	621	477	1,495	1,115	5	4
MD .....	428	337	483	580	42	38
MA .....	3	0	155	51	1	1
MI .....	390	286	630	704	10	3
MN .....	810	1,025	1,895	2,240	70	70
MS .....	1,407	1,938	2,049	1,759	706	724
MO .....	675	832	1,490	1,105	185	183
MT .....	45	24	69	65	1	1
NE .....	563	1,186	1,573	1,420	0	0
NH .....	24	6	29	49	6	31
NJ .....	174	144	0	84	0	0
NM .....	68	110	162	185	4	0
NY .....	540	570	470	500	20	20
NC .....	1,920	2,010	2,952	2,990	690	769
ND .....	3	2	40	35	7	3
OH .....	3,000	3,252	4,700	5,600	40	51
OK .....	400	400	920	720	210	220
OR .....	344	250	241	258	6	3
PA .....	2,000	2,490	2,550	3,204	115	105
RI .....	17	1	1	0	1	0
SC .....	438	506	446	215	157	133
SD .....	175	400	205	10	0	0
TN .....	246	360	442	475	110	130
TX .....	2,315	2,500	2,700	3,760	510	533
UT .....	244	268	196	98	0	0
VT .....	1	13	4	0	1	1
VA .....	582	672	428	549	187	177
WA .....	1,090	940	805	977	1	1
WV .....	322	265	292	340	131	114
WI .....	59	328	958	715	25	34
WY .....	2	2	2	2	1	1
Other States <sup>2</sup> ...	5	1	2	1	5	0
US .....	35,578	39,664	54,766	56,054	7,549	7,682

<sup>1</sup> Preliminary. <sup>2</sup> AK, AZ, and NV combined to avoid disclosure of individual operations. NASS, Livestock and Economics Branch, (202) 720-6146.



**Table 8-40.—Chickens: Number, value per head, and total value, by State and United States, Dec. 1, 1997–98<sup>1</sup>**

State	Number		Value per bird		Total value	
	1997	1998 <sup>2</sup>	1997	1998 <sup>2</sup>	1997	1998 <sup>2</sup>
	<i>1,000 head</i>	<i>1,000 head</i>	<i>Dollars</i>	<i>Dollars</i>	<i>1,000 dollars</i>	<i>1,000 dollars</i>
AL .....	16,091	16,613	5.10	5.20	82,064	86,388
AR .....	23,145	23,500	5.00	5.10	115,725	119,850
CA .....	30,500	29,993	2.20	2.10	67,100	62,985
CO .....	4,718	4,597	2.20	2.40	10,380	11,033
CT .....	4,309	3,959	2.30	2.30	9,911	9,106
DE .....	685	495	4.60	4.00	3,151	1,980
FL .....	12,972	12,785	2.40	2.30	31,133	29,405
GA .....	29,910	31,126	3.30	3.30	98,703	102,716
HI .....	863	747	2.50	2.50	2,158	1,868
ID .....	1,228	1,256	2.20	1.90	2,702	2,386
IL .....	4,056	3,484	1.70	1.60	6,895	5,574
IN .....	27,189	29,357	1.70	1.60	46,221	46,971
IA .....	27,965	31,266	1.60	1.50	44,744	46,899
KS .....	2,052	1,890	1.80	1.50	3,694	2,835
KY .....	4,700	5,300	2.30	2.20	10,810	11,660
LA .....	2,520	2,650	2.40	2.50	6,048	6,625
ME .....	6,900	6,817	2.40	2.40	16,560	16,361
MD .....	4,115	4,603	2.00	1.70	8,230	7,825
MA .....	704	494	2.20	2.20	1,549	1,087
MI .....	6,190	6,744	1.60	1.40	9,904	9,442
MN .....	14,730	15,575	1.90	1.80	27,987	28,035
MS .....	11,073	11,440	5.10	5.40	56,472	61,776
MO .....	9,445	8,810	2.80	2.90	26,446	25,549
MT .....	405	380	3.20	2.90	1,296	1,102
NE .....	12,126	13,219	2.10	2.10	25,465	27,760
NH .....	218	215	2.40	2.60	523	559
NJ .....	2,128	2,097	2.50	3.00	5,320	6,291
NM .....	1,406	1,371	1.90	1.70	2,671	2,331
NY .....	4,500	4,700	1.80	1.70	8,100	7,990
NC .....	17,175	17,220	4.60	4.60	79,005	79,212
ND .....	290	270	2.20	2.00	638	540
OH .....	34,798	37,410	2.00	2.00	69,596	74,820
OK .....	5,605	5,380	4.60	4.30	25,783	23,134
OR .....	3,591	3,476	1.80	1.90	6,464	6,604
PA .....	27,670	28,454	1.70	1.70	47,039	48,372
RI .....	90	78	1.70	2.00	153	156
SC .....	5,670	5,599	3.00	2.60	17,010	14,557
SD .....	2,550	2,645	2.20	2.10	5,610	5,555
TN .....	2,036	2,255	4.80	4.90	9,773	11,050
TX .....	22,700	24,400	2.60	2.80	59,020	68,320
UT .....	2,138	2,196	1.60	1.60	3,421	3,514
VT .....	203	206	2.90	2.60	589	536
VA .....	4,660	5,143	4.80	4.80	22,368	24,686
WA .....	6,867	6,969	1.90	2.00	13,047	13,938
WV .....	1,790	1,856	5.30	5.40	9,487	10,022
WI .....	5,025	4,687	2.30	2.10	11,558	9,843
WY .....	17	17	2.10	2.10	36	36
Oth Sts <sup>3</sup> .....	312	350	2.00	2.00	624	700
US .....	410,030	424,094	2.72	2.69	1,113,183	1,139,984

<sup>1</sup>Excludes commercial broilers. <sup>2</sup>Preliminary. <sup>3</sup>AK, AZ, and NV combined to avoid disclosure of individual operations.

NASS, Livestock and Economics Branch, (202) 720-6146.

**Table 8-41.—Poultry Meat: Total imports by specified countries, 1994–98**

Continent and country	1994	1995	1996	1997	1998
	1,000 tons	1,000 tons	1,000 tons	1,000 tons	1,000 tons
<b>North America:</b>					
Canada .....	91	105	115	128	144
Mexico .....	177	163	189	196	217
United States .....	0	0	2	3	3
<b>Total .....</b>	<b>268</b>	<b>268</b>	<b>306</b>	<b>327</b>	<b>364</b>
<b>South America:</b>					
Argentina .....	52	20	30	48	57
<b>Total .....</b>	<b>52</b>	<b>20</b>	<b>30</b>	<b>48</b>	<b>57</b>
<b>European Union:<sup>1</sup></b>					
Belgium and Luxembourg .....	2	0	0	2	2
Denmark .....	0	0	6	0	0
France .....	10	16	18	18	18
Germany .....	123	133	160	158	140
Greece .....	0	0	0	0	0
Ireland .....	0	0	0	0	0
Italy .....	18	16	15	12	11
Netherlands .....	10	12	40	43	45
Portugal .....	0	4	4	4	4
Spain .....	26	20	25	24	24
United Kingdom .....	5	6	23	29	24
<b>Total .....</b>	<b>194</b>	<b>207</b>	<b>291</b>	<b>290</b>	<b>268</b>
<b>Eastern Europe:</b>					
Poland .....	61	34	44	61	65
Romania .....	49	26	7	19	25
<b>Total .....</b>	<b>110</b>	<b>60</b>	<b>51</b>	<b>80</b>	<b>90</b>
<b>Former Soviet Union:</b>					
Russia .....	516	870	1,116	1,272	852
Ukraine .....	2	9	80	57	40
<b>Total .....</b>	<b>518</b>	<b>879</b>	<b>1,196</b>	<b>1,329</b>	<b>892</b>
<b>Middle East:</b>					
Saudi Arabia .....	275	290	288	294	282
United Arab Emirates .....	63	100	105	112	105
<b>Total .....</b>	<b>338</b>	<b>390</b>	<b>393</b>	<b>406</b>	<b>387</b>
<b>Africa:</b>					
Egypt .....	5	4	2	2	2
South Africa .....	65	94	69	80	84
<b>Total .....</b>	<b>70</b>	<b>98</b>	<b>71</b>	<b>82</b>	<b>86</b>
<b>Asia:</b>					
China .....	344	625	650	780	750
Hong Kong .....	533	695	799	871	853
Japan .....	455	549	559	508	507
Korea, Republic of .....	24	36	38	41	29
Singapore .....	70	61	70	66	59
Thailand .....	0	0	0	0	0
<b>Total .....</b>	<b>1,426</b>	<b>1,966</b>	<b>2,116</b>	<b>2,266</b>	<b>2,198</b>
<b>Grand total .....</b>	<b>2,976</b>	<b>3,888</b>	<b>4,454</b>	<b>4,828</b>	<b>4,342</b>

<sup>1</sup> EU trade excludes intra-EU trade.  
 Prepared or estimated on the basis of official statistics of foreign governments, other foreign source materials, reports of U.S. Agricultural Counselors, Attaches, and Foreign Service Officers, results of office research, and related information.  
 FAS, Dairy, Livestock and Poultry Division, (202) 720-8031.

**Table 8-42.—Poultry Meat: Total exports by specified countries, 1994–98**

Continent and country	1994	1995	1996	1997	1998
	1,000 tons	1,000 tons	1,000 tons	1,000 tons	1,000 tons
<b>North America:</b>					
Canada .....	36	67	75	94	88
United States .....	1,472	1,969	2,325	2,561	2,512
<b>Total .....</b>	<b>1,508</b>	<b>2,036</b>	<b>2,400</b>	<b>2,655</b>	<b>2,600</b>
<b>South America:</b>					
Argentina .....	0	8	10	17	20
Brazil .....	495	435	582	665	588
Venezuela .....	10	3	8	7	9
<b>Total .....</b>	<b>505</b>	<b>446</b>	<b>600</b>	<b>689</b>	<b>617</b>
<b>European Union:<sup>1</sup></b>					
Belgium and Luxembourg .....	35	47	46	73	60
Denmark .....	83	80	66	63	48
France .....	455	449	466	439	413
Germany .....	19	27	15	27	25
Greece .....	5	8	8	9	7
Ireland .....	7	0	1	2	3
Italy .....	8	17	17	13	13
Netherlands .....	122	182	188	209	161
Portugal .....	5	11	13	3	3
Spain .....	3	3	2	5	5
United Kingdom .....	37	61	74	92	85
<b>Total .....</b>	<b>779</b>	<b>885</b>	<b>896</b>	<b>935</b>	<b>823</b>
<b>Eastern Europe:</b>					
Hungary .....	80	108	109	109	115
Poland .....	14	17	21	23	25
Romania .....	3	1	1	1	1
<b>Total .....</b>	<b>97</b>	<b>126</b>	<b>131</b>	<b>133</b>	<b>141</b>
<b>Former Soviet Union:</b>					
Russia .....	6	5	18	15	0
Ukraine .....	2	3	6	10	15
<b>Total .....</b>	<b>8</b>	<b>8</b>	<b>24</b>	<b>25</b>	<b>15</b>
<b>Middle East:</b>					
Israel .....	12	13	15	15	15
Saudi Arabia .....	8	17	25	24	26
Turkey .....	12	5	6	5	10
<b>Total .....</b>	<b>32</b>	<b>35</b>	<b>46</b>	<b>44</b>	<b>51</b>
<b>Africa:</b>					
South Africa .....	4	1	4	8	10
<b>Total .....</b>	<b>4</b>	<b>1</b>	<b>4</b>	<b>8</b>	<b>10</b>
<b>Asia:</b>					
China .....	189	328	332	420	390
Hong Kong .....	322	489	568	583	605
Japan .....	3	3	3	3	3
Singapore .....	11	7	9	10	7
Taiwan .....	5	5	5	5	6
Thailand .....	176	177	169	199	245
<b>Total .....</b>	<b>706</b>	<b>1,009</b>	<b>1,086</b>	<b>1,220</b>	<b>1,256</b>
<b>Oceania:</b>					
Australia .....	9	10	10	11	13
<b>Total .....</b>	<b>9</b>	<b>10</b>	<b>10</b>	<b>11</b>	<b>13</b>
<b>Grand total .....</b>	<b>3,648</b>	<b>4,556</b>	<b>5,197</b>	<b>5,720</b>	<b>5,526</b>

<sup>1</sup> EU trade excludes intra-EU trade.  
 Prepared or estimated on the basis of official statistics of foreign governments, other foreign source materials, reports of U.S. Agricultural Counselors, Attaches, and Foreign Service Officers, results of office research, and related information.  
 FAS, Dairy, Livestock and Poultry Division, (202) 720-8031.

**Table 8-43.—Total poultry meat: Production in specified countries, 1994–98**

Continent and country	1994	1995	1996	1997	1998 <sup>1</sup>
	<i>1,000 metric tons</i>	<i>1,000 metric tons</i>	<i>1,000 metric tons</i>	<i>1,000 metric tons</i>	<i>1,000 metric tons</i>
<b>North America:</b>					
Canada .....	854	861	893	916	955
Mexico .....	1,483	1,554	1,600	1,615	1,695
United States .....	13,206	13,786	14,522	14,951	15,088
<b>Total .....</b>	<b>15,543</b>	<b>16,201</b>	<b>17,015</b>	<b>17,482</b>	<b>17,738</b>
<b>South America:</b>					
Argentina .....	675	700	680	780	825
Brazil .....	3,491	4,140	4,144	4,562	4,592
Colombia .....	514	537	623	647	679
Guatemala .....	95	104	111	117	123
Honduras .....	35	41	42	53	58
Venezuela .....	365	410	391	395	400
<b>Total .....</b>	<b>5,175</b>	<b>5,932</b>	<b>5,991</b>	<b>6,554</b>	<b>6,677</b>
<b>European Union:</b>					
Belgium and Luxembourg .....	219	251	264	259	255
Denmark .....	172	168	170	175	178
France .....	1,961	2,083	2,206	2,282	2,330
Germany <sup>2</sup> .....	626	633	638	682	717
Greece .....	175	178	176	176	176
Ireland .....	97	101	108	114	117
Italy .....	1,084	1,123	1,151	1,177	1,177
Netherlands .....	594	641	700	715	728
Portugal .....	248	235	251	260	265
Spain .....	880	910	950	901	910
United Kingdom .....	1,358	1,394	1,443	1,502	1,529
<b>Total .....</b>	<b>7,414</b>	<b>7,717</b>	<b>8,057</b>	<b>8,243</b>	<b>8,382</b>
<b>Eastern Europe:</b>					
Hungary .....	320	368	365	372	382
Poland .....	345	367	410	460	500
Romania .....	135	160	180	155	142
<b>Total .....</b>	<b>800</b>	<b>895</b>	<b>955</b>	<b>987</b>	<b>1,024</b>
<b>Former Soviet Union:</b>					
Russia .....	1,068	859	705	630	640
Ukraine .....	265	235	230	192	212
<b>Total .....</b>	<b>1,333</b>	<b>1,094</b>	<b>935</b>	<b>822</b>	<b>852</b>
<b>Middle East:</b>					
Israel .....	242	249	262	264	254
Kuwait .....	18	20	22	24	26
Saudi Arabia .....	286	309	340	438	450
Turkey .....	330	390	480	590	635
United Arab Emirates .....	18	20	21	22	25
<b>Total .....</b>	<b>894</b>	<b>988</b>	<b>1,125</b>	<b>1,338</b>	<b>1,364</b>
<b>Africa:</b>					
Egypt .....	345	360	380	385	400
South Africa .....	667	736	804	887	940
<b>Total .....</b>	<b>1,012</b>	<b>1,096</b>	<b>1,184</b>	<b>1,272</b>	<b>1,340</b>
<b>Asia:</b>					
China .....	7,550	9,347	10,746	11,226	11,700
Hong Kong .....	84	94	90	88	65
India .....	454	507	578	590	595
Japan .....	1,258	1,282	1,249	1,228	1,210
Korea, Republic of .....	378	415	459	450	405
Singapore .....	57	60	59	58	48
Taiwan .....	604	630	668	739	770
Thailand .....	740	825	890	955	960
<b>Total .....</b>	<b>11,125</b>	<b>13,160</b>	<b>14,739</b>	<b>15,334</b>	<b>15,753</b>
<b>Oceania:</b>					
Australia .....	498	500	503	533	582
<b>Total .....</b>	<b>498</b>	<b>500</b>	<b>503</b>	<b>533</b>	<b>582</b>
<b>Grand total .....</b>	<b>43,794</b>	<b>47,583</b>	<b>50,504</b>	<b>52,565</b>	<b>53,712</b>

<sup>1</sup> Preliminary. <sup>2</sup> Includes the former East Germany.

Prepared or estimated on the basis of official statistics of foreign governments, other foreign source materials, reports of U.S. Agricultural Counselors, Attaches, and Foreign Service Officers, results of office research, and related information.

FAS, Production Estimates and Crop Assessment Division, (202) 720-8031.

**Table 8-44.—Mature Chickens: Lost, sold, and value of sales, 1997 (preliminary) <sup>1</sup>**

State	Number lost <sup>2</sup>	Number sold <sup>3</sup>	Pounds sold	Price per pound	Value of sales
	<i>1,000 head</i>	<i>1,000 head</i>	<i>1,000 pounds</i>	<i>Dollars</i>	<i>1,000 dollars</i>
AL .....	1,700	8,820	66,150	0.170	11,246
AR .....	2,200	10,600	63,600	0.090	5,724
CA .....	3,500	15,300	53,550	0.023	1,232
CO .....	600	2,300	8,050	0.030	242
CT .....	440	2,192	9,645	0.025	241
DE .....	57	230	1,748	0.102	178
FL .....	3,100	4,900	22,050	0.002	44
GA .....	2,500	15,500	106,950	0.160	17,112
HI .....	152	232	812	0.149	121
ID .....	87	577	2,193	0.030	66
IL .....	680	1,540	8,316	0.059	491
IN .....	2,569	11,611	39,477	0.020	790
IA .....	3,250	11,150	44,600	0.031	1,383
KS .....	224	605	2,420	0.050	121
KY .....	300	1,500	4,950	0.050	248
LA .....	250	1,450	8,410	0.072	606
ME .....	558	3,578	15,743	0.020	315
MD .....	486	2,105	11,578	0.056	648
MA .....	66	390	1,716	0.020	34
MI .....	1,000	2,900	13,340	0.040	534
MN .....	1,900	5,800	20,300	0.031	629
MS .....	1,410	5,290	34,914	0.144	5,028
MO .....	1,550	3,300	18,150	0.090	1,634
MT .....	39	319	1,276	0.020	26
NE .....	1,750	4,320	17,280	0.031	536
NH .....	22	140	616	0.025	15
NJ .....	330	950	3,135	0.040	125
NM .....	520	340	1,190	0.005	6
NY .....	450	2,800	12,320	0.026	320
NC .....	1,850	10,000	69,000	0.110	7,590
ND .....	60	160	720	0.031	22
OH .....	3,280	16,430	55,862	0.013	726
OK .....	780	2,670	16,554	0.090	1,490
OR .....	485	1,500	7,800	0.020	156
PA .....	3,900	12,400	62,000	0.075	4,650
RI .....	8	67	295	0.025	7
SC .....	900	2,850	14,535	0.111	1,613
SD .....	475	900	3,420	0.030	103
TN .....	173	904	4,158	0.120	499
TX .....	2,970	11,691	53,779	0.036	1,936
UT .....	250	1,068	4,272	0.030	128
VT .....	17	90	396	0.025	10
VA .....	513	3,210	14,766	0.110	1,624
WA .....	1,000	3,000	10,200	0.020	204
WV .....	170	1,160	4,872	0.110	536
WI .....	700	1,990	7,761	0.059	458
WY .....	6	7	32	0.050	2
Other States <sup>4</sup> .....	29	150	598	0.020	12
Total US .....	49,256	190,986	925,499	0.077	71,461

<sup>1</sup> Estimates cover the 12-month period, Dec. 1, previous year through Nov. 30 and excludes broilers. <sup>2</sup> Includes death, rendered, composted, destroyed, disappeared, and other losses during the 12-month period. <sup>3</sup> Sold for slaughter. <sup>4</sup> AK, AZ, and NV combined to avoid disclosing individual operations.

NASS, Livestock and Economics Branch, (202) 720-6146.

**Table 8-45.—Broilers: Production and value, United States, 1988-97 <sup>1</sup>**

Year	Production		Price per pound <sup>2</sup>	Value of production
	Number	Weight		
	<i>Thousands</i>	<i>1,000 pounds</i>	<i>Cents</i>	<i>1,000 dollars</i>
1988 .....	5,237,901	22,464,479	33.1	7,435,300
1989 .....	5,516,521	23,978,816	36.6	8,777,915
1990 .....	5,864,150	25,630,960	32.6	8,365,704
1991 .....	6,137,150	27,202,862	30.8	8,383,046
1992 .....	6,402,490	28,828,872	31.8	9,174,136
1993 .....	6,694,310	30,617,600	34.0	10,416,962
1994 .....	7,017,540	32,528,500	35.0	11,371,723
1995 .....	7,325,670	34,222,000	34.4	11,762,222
1996 .....	7,597,600	36,483,050	38.1	13,904,924
1997 <sup>3</sup> .....	7,760,260	37,523,400	37.7	14,152,519

<sup>1</sup> Broilers are young chickens of the meat-type breeds, raised for the purpose of meat production. These figures are not included in farm production of chickens. Estimates cover the 12-month period, Dec 1 previous year through Nov 30. Excludes States which produced less than 500,000 broilers. <sup>2</sup> Live weight equivalent price. <sup>3</sup> Preliminary.

NASS, Livestock and Economics Branch, (202) 720-6146.

**Table 8-46.—Mature Chickens: Lost, sold for slaughter, price, and value, United States, 1988–97<sup>1</sup>**

Year	Number		Pounds (live weight) sold	Price per pound live weight	Value of sales
	Lost <sup>2</sup>	Sold <sup>3</sup>			
	<i>Thousands head</i>	<i>Thousands head</i>	<i>1,000 pounds</i>	<i>Dollars</i>	<i>1,000 dollars</i>
1988 .....	37,494	226,167	1,050,658	0.094	99,011
1989 .....	36,076	199,735	943,732	0.151	142,409
1990 .....	34,854	208,362	985,007	0.096	94,392
1991 .....	36,390	198,534	953,281	0.076	72,199
1992 .....	35,126	207,689	978,255	0.091	89,105
1993 .....	34,962	198,032	964,356	0.100	96,409
1994 .....	35,621	197,012	992,840	0.074	73,050
1995 .....	61,060	179,503	924,036	0.065	60,153
1996 .....	60,435	174,299	900,652	0.066	59,187
1997 .....	49,256	190,986	925,499	0.077	71,461

<sup>1</sup> Estimates cover the 12-month period, Dec. 1, previous year through Nov. 30 and excludes broilers. <sup>2</sup> Includes death, rendered, composted, destroyed, and other losses during the 12-month period. <sup>3</sup> Sold for slaughter.  
NASS, Livestock and Economics Branch, (202) 720-6146.

**Table 8-47.—Chickens: Supply, distribution, and per capita consumption, ready-to-cook basis, United States, 1990–99**

Year	Production			Commercial storage at beginning of year	Exports	Commercial storage at end of year	Consumption	
	Commercial broilers	Other chickens	Total <sup>1</sup>				Total <sup>1,3</sup>	Per capita
	<i>Million pounds</i>	<i>Million pounds</i>	<i>Million pounds</i>	<i>Million pounds</i>	<i>Million pounds</i>	<i>Million pounds</i>	<i>Million pounds</i>	<i>Pounds</i>
1990 .....	18,430	523	18,953	227	1,168	251	17,762	71
1991 .....	19,591	508	20,099	251	1,289	310	18,751	74
1992 .....	20,904	520	21,424	310	1,530	378	19,826	78
1993 .....	22,015	515	22,530	378	2,022	366	20,520	79
1994 .....	23,666	509	24,175	366	2,966	472	21,103	81
1995 .....	24,827	496	25,323	472	3,993	567	21,238	81
1996 .....	26,124	491	26,615	567	4,685	647	21,854	82
1997 <sup>2</sup> .....	27,041	510	27,570	647	5,048	614	22,541	84
1998 <sup>4</sup> .....	27,613	521	28,135	614	4,886	707	23,160	86
1999 <sup>4</sup> .....	29,116	546	29,662	707	4,737	775	24,882	91

<sup>1</sup> Totals may not add due to rounding. <sup>2</sup> Preliminary. <sup>3</sup> Shipments to territories now included in total consumption. <sup>4</sup> Forecast.

ERS, Animal Products Branch, (202) 694-5180.

**Table 8-48.—Broilers: Production, price, and value, by States, 1996 and 1997<sup>1</sup>**

State	1996				1997 <sup>3</sup>			
	Production		Price per pound <sup>2</sup>	Value of production	Production		Price per pound <sup>2</sup>	Value of production
	Number	Weight			Number	Weight		
	<i>Thou-</i> <i>sands</i>	<i>1,000</i> <i>pounds</i>	<i>Dollars</i>	<i>1,000</i> <i>dollars</i>	<i>Thou-</i> <i>sands</i>	<i>1,000</i> <i>pounds</i>	<i>Dollars</i>	<i>1,000</i> <i>dollars</i>
AL .....	873,300	4,191,800	0.390	1,634,802	906,200	4,349,800	0.380	1,652,924
AR .....	1,155,000	5,659,500	0.375	2,122,313	1,164,600	5,590,100	0.375	2,096,288
CA .....	234,200	1,171,000	0.390	456,690	237,300	1,210,200	0.390	471,978
DE .....	257,600	1,416,800	0.370	524,216	256,900	1,413,000	0.375	529,875
FL .....	131,400	591,300	0.390	230,607	132,400	595,800	0.385	229,383
GA .....	1,154,000	5,654,600	0.390	2,205,294	1,182,800	5,914,000	0.385	2,276,890
HI .....	950	4,000	0.520	2,080	1,000	4,400	0.520	2,288
IA .....	17,200	77,400	0.370	28,638	.....	.....	.....	.....
KY .....	77,000	331,100	0.370	122,507	110,600	497,700	0.370	184,149
MD .....	294,800	1,385,600	0.370	512,672	295,300	1,417,400	0.375	531,525
MI .....	550	2,200	0.380	836	640	2,900	0.365	1,059
MN .....	47,500	251,800	0.375	94,425	46,300	240,800	0.375	90,300
MS .....	675,900	3,109,100	0.385	1,197,004	720,300	3,313,400	0.370	1,225,958
MO .....	246,300	1,059,100	0.375	397,163	250,000	1,075,000	0.375	403,125
NE .....	2,300	13,300	0.360	4,788	1,600	8,200	0.375	3,075
NY .....	1,500	8,000	0.410	3,280	1,400	7,000	0.390	2,730
NC .....	681,100	3,541,700	0.370	1,310,429	665,000	3,657,500	0.375	1,371,563
OH .....	48,000	240,000	0.365	87,600	45,800	229,000	0.365	83,585
OK .....	204,000	877,200	0.375	328,950	197,400	868,600	0.375	325,725
OR .....	21,300	106,500	0.380	40,470	21,700	108,500	0.385	41,773
PA .....	128,200	653,800	0.375	245,175	135,200	689,500	0.375	258,563
SC .....	177,500	786,300	0.390	306,657	182,800	829,900	0.385	319,512
TN .....	134,000	603,000	0.385	232,155	138,600	623,700	0.380	237,006
TX .....	419,200	1,886,400	0.385	726,264	455,100	2,093,500	0.370	774,595
VA .....	259,100	1,243,700	0.375	466,388	259,400	1,219,200	0.365	445,008
WA .....	40,000	196,000	0.380	74,480	38,800	194,000	0.385	74,690
WV .....	89,700	394,700	0.375	148,013	90,800	381,400	0.365	139,211
WI .....	32,400	152,300	0.380	57,874	32,900	157,900	0.375	59,213
Other States <sup>4</sup>	193,600	874,850	0.392	343,154	189,420	831,000	0.386	320,528
Total <sup>5</sup> .....	7,597,600	36,483,050	0.381	13,904,924	7,760,260	37,523,400	0.377	14,152,519

<sup>1</sup>Broilers are young chickens of the meat-type breeds, raised for the purpose of meat production. Estimates cover the 12-month period, Dec. 1, previous year through Nov. 30. <sup>2</sup>Live weight equivalent price. <sup>3</sup>Preliminary. <sup>4</sup>CT, IA, IL, IN, LA, ND, and SD. <sup>5</sup>Excludes States producing less than 500,000 broilers.

NASS, Livestock and Economics Branch, (202) 720-6146.

**Table 8-49.—Chicks hatched by commercial hatcheries: Number, average price, and value, United States, 1988-97**

Year	Chicks hatched			Average price of baby chicks per 100			Value of chick production <sup>1</sup>
	Broiler-type	Egg-type	All	Broiler-type	Egg-type	All	
	<i>Thousands</i>	<i>Thousands</i>	<i>Thousands</i>	<i>Dollars</i>	<i>Dollars</i>	<i>Dollars</i>	
1988 .....	5,602,400	368,349	5,970,749	17.00	50.50	18.10	1,046,706
1989 .....	5,946,948	382,906	6,329,854	17.60	50.30	18.60	1,143,388
1990 .....	6,324,426	398,432	6,722,858	18.50	50.80	19.50	1,273,269
1991 .....	6,616,527	419,554	7,036,081	18.20	51.10	19.20	1,308,268
1992 .....	6,892,844	391,319	7,284,163	18.30	54.70	19.30	1,369,893
1993 .....	7,220,768	405,986	7,626,754	18.60	53.80	19.60	1,455,383
1994 .....	7,562,316	381,577	7,943,893	19.30	49.70	20.10	1,557,276
1995 .....	7,932,352	396,501	8,328,853	18.60	49.80	19.40	1,577,782
1996 .....	8,078,159	401,640	8,479,799	18.60	53.80	19.50	1,611,380
1997 .....	8,322,496	425,007	8,747,503	19.70	53.10	20.60	1,756,471

<sup>1</sup>Excludes egg-type cockerels destroyed.

NASS, Livestock and Economics Branch, (202) 720-6146.

**Table 8-50.—Poultry: Feed-price ratios, and poultry ration cost, United States, 1988-97**

Year	Ratios <sup>1</sup>			Year	Ratios <sup>1</sup>		
	Egg-feed	Broiler-feed	Turkey-feed		Egg-feed	Broiler-feed	Turkey-feed
	<i>Pounds</i>	<i>Pounds</i>	<i>Pounds</i>		<i>Pounds</i>	<i>Pounds</i>	<i>Pounds</i>
1988 .....	7.3	4.6	5.6	1993 .....	9.4	5.3	6.5
1989 .....	10.5	5.0	6.0	1994 .....	8.6	5.2	6.6
1990 .....	11.1	4.9	6.5	1995 .....	8.8	5.1	6.3
1991 .....	10.4	4.9	6.6	1996 .....	8.6	4.4	5.3
1992 .....	8.4	5.1	6.4	1997 .....	8.8	4.7	5.7

<sup>1</sup>Number of pounds of poultry feed equivalent in value at local market prices to 1 dozen eggs, or 1 pound of chicken or turkey live weight. Simple average of monthly ratios. Effective January 1995, prices of commercial prepared feeds are based on current U.S. prices received for corn, soybeans, and wheat.

NASS, Livestock and Economics Branch, (202) 720-3570.

**Table 8-51.—Poultry: Slaughtered under Federal inspection, by classes, United States, 1995-97**

Class	Number inspected			Pounds inspected (live weight)		
	1995	1996	1997	1995	1996	1997
	<i>Thousands</i>	<i>Thousands</i>	<i>Thousands</i>	<i>Thousands</i>	<i>Thousands</i>	<i>Thousands</i>
Young chickens .....	7,371,429	7,546,250	7,735,903	34,352,980	36,034,815	37,207,401
Mature chickens .....	159,418	153,609	167,635	812,220	800,594	839,202
Total chickens .....	7,530,847	7,699,858	7,903,539	35,165,199	36,835,409	38,046,603
Young turkeys .....	278,806	291,034	288,400	6,456,579	6,881,123	6,908,440
Old turkeys .....	1,868	2,068	1,762	46,415	53,301	45,387
Fryer-roaster turkeys .....	358	188	68	3,137	1,697	658
Total turkeys .....	281,032	293,290	290,230	6,506,131	6,936,121	6,954,485
Ducks .....	19,528	20,663	21,978	129,875	137,624	146,534
Other poultry .....				8,340	13,417	17,733
Total poultry .....				41,809,546	43,922,572	45,165,355

Class	Pounds certified (ready-to-cook)			Pounds condemned		
	1995	1996	1997	Ante-mortem (live weight)		
				1995	1996	1997
	<i>Thousands</i>	<i>Thousands</i>	<i>Thousands</i>	<i>Thousands</i>	<i>Thousands</i>	<i>Thousands</i>
Young chickens .....	25,020,790	26,336,303	27,270,741	127,553	135,661	130,531
Mature chickens .....	494,518	486,812	509,247	13,719	12,885	13,893
Total chickens .....	25,515,308	26,823,115	27,779,987	141,272	148,546	144,424
Young turkeys .....	5,091,336	5,424,111	5,442,835	16,963	20,280	20,052
Old turkeys .....	35,138	40,208	34,597	417	491	313
Fryer-roaster turkeys .....	2,341	1,297	482	25	7	2
Total turkeys .....	5,128,816	5,465,617	5,477,914	17,405	20,778	20,367
Ducks .....	93,061	99,040	104,414	165	130	149
Other poultry .....	5,133	7,575	10,134	38	74	94
Total poultry .....	30,742,318	32,395,346	33,372,449	158,879	169,528	165,033

Class	Pounds condemned—Continued		
	Post-mortem (New York dressed weight)		
	1995	1996	1997
	<i>Thousands</i>	<i>Thousands</i>	<i>Thousands</i>
Young chickens .....	527,948	551,558	571,738
Mature chickens .....	40,283	46,347	51,506
Total chickens .....	568,232	597,905	623,244
Young turkeys .....	121,736	132,962	136,311
Old turkeys .....	3,094	3,303	2,540
Fryer-roaster turkeys .....	78	34	21
Total turkeys .....	124,907	136,299	138,872
Ducks .....	2,182	2,307	2,954
Other poultry .....	125	155	177
Total poultry .....	695,446	736,665	765,246

NASS, Livestock, Dairy, and Poultry Branch, (202) 720-6146.



**Table 8-52.—Chickens and turkeys: Number classified as “U.S. Pullorum-Typhoid Clean,” and number and percentage of reactors, United States, 1988–97**

Year beginning July	Chicken tests				Turkey tests			
	States reporting	Chickens in tested flocks (first test)	Reactors <sup>1</sup>		States reporting	Turkeys in tested flocks (first test)	Reactors	
			Number	Percent			Number	Percent
1988 .....	47	46,924	44	0.0001	47	5,243,118	0	0.0000
1989 .....	47	51,438	341	0.0206	47	5,412,869	0	0.0000
1990 .....	47	48,821	6	0.0000	47	5,442,994	0	0.0000
1991 .....	47	48,820	6	0.0000	47	5,443,000	0	0.0000
1992 .....	47	49,534	11	0.0000	47	5,160,884	0	0.0000
1993 .....	47	49,628	0	0.0000	47	5,339,500	0	0.0000
1994 .....	47	52,668	0	0.0000	47	4,949,240	0	0.0000
1995 .....	48	58,019	0	0.0000	48	4,679,984	0	0.0000
1996 .....	48	58,191	0	0.0000	48	5,905,799	0	0.0000
1997 .....	48	62,402	0	0.0000	48	5,301,183	0	0.0000

<sup>1</sup> Number of reacting birds and percent of birds tested. Testing year starting July 1, 1989. APHIS, Veterinary Services, (301) 436-7768.

**Table 8-53.—Turkeys: Supply, distribution, and per capita consumption, ready-to-cook basis, United States, 1990–99**

Year	Production	Commercial storage at beginning of year	Exports	Commercial storage at end of year	Consumption	
					Total <sup>1 3</sup>	Per capita
	<i>Million pounds</i>	<i>Million pounds</i>	<i>Million pounds</i>	<i>Million pounds</i>	<i>Million pounds</i>	<i>Pounds</i>
1990 .....	4,514	236	54	306	4,390	17.6
1991 .....	4,603	306	122	264	4,523	17.9
1992 .....	4,777	264	202	272	4,568	17.9
1993 .....	4,798	272	244	249	4,577	17.7
1994 .....	4,937	249	280	254	4,652	17.8
1995 .....	5,069	254	348	271	4,706	17.9
1996 .....	5,401	271	438	328	4,906	18.5
1997 <sup>3</sup> .....	5,412	328	598	415	4,727	17.6
1998 <sup>4</sup> .....	5,174	415	428	275	4,889	18.1
1999 <sup>4</sup> .....	5,186	275	430	250	4,781	17.5

<sup>1</sup>Totals may not add due to rounding. <sup>2</sup>Shipments to territories now included in consumption. <sup>3</sup>Preliminary. <sup>4</sup>Forecast. ERS, Animal Products Branch, (202) 694-5180.

**Table 8-54.—Turkeys: Production, and value, United States, 1988–97**

Year	Number raised <sup>1</sup>	Pounds (live weight) produced	Price per pound live weight	Value of production
	<i>Thousands</i>	<i>1,000 pounds</i>	<i>Cents</i>	<i>1,000 dollars</i>
1988 .....	242,421	5,059,056	38.6	1,951,351
1989 .....	261,394	5,467,629	40.9	2,235,145
1990 .....	282,445	6,043,155	39.6	2,393,375
1991 .....	284,910	6,114,620	38.5	2,352,986
1992 .....	289,880	6,355,293	37.7	2,396,364
1993 .....	287,650	6,432,577	39.0	2,509,127
1994 .....	286,585	6,540,295	40.4	2,643,057
1995 .....	292,356	6,761,327	41.0	2,769,397
1996 .....	302,713	7,222,834	43.3	3,124,496
1997 <sup>2</sup> .....	301,251	7,225,059	39.9	2,884,377

<sup>1</sup> Total poult hatched less death loss of poults and young turkeys during the year. <sup>2</sup> Preliminary. NASS, Livestock and Economics Branch, (202) 720-6146.

**Table 8-55.—Turkeys: Production and value, by States, 1997<sup>1</sup>**

State	Number raised <sup>2</sup>	Pounds produced <sup>3</sup>	Price per pound <sup>4</sup>	Value of production
	<i>1,000 head</i>	<i>1,000 pounds</i>	<i>Dollars</i>	<i>1,000 dollars</i>
AR .....	30,000	525,000	0.41	215,250
CA .....	21,000	480,900	0.42	201,978
CO .....	3,900	147,030	( <sup>5</sup> )	( <sup>5</sup> )
CT .....	5	125	1.07	134
GA .....	175	5,758	0.45	2,591
IL .....	3,500	86,800	0.41	35,588
IN .....	14,500	359,600	0.41	147,436
IA .....	7,000	187,600	0.43	80,668
KS .....	1,900	52,250	0.41	21,423
MD & DE .....	740	13,335	0.43	5,734
MA .....	82	2,050	1.28	2,624
MN .....	45,500	1,014,650	0.39	395,714
MO .....	21,000	562,800	0.40	225,120
NH .....	15	368	1.35	497
NJ .....	74	1,576	0.85	1,340
NY .....	510	12,087	0.42	5,077
NC .....	53,500	1,353,550	0.39	527,885
ND .....	2,600	57,980	0.39	22,612
OH .....	6,700	217,750	0.35	76,213
PA .....	11,600	235,480	0.41	96,547
SC .....	11,200	368,480	0.39	143,707
SD .....	3,600	115,200	0.40	46,080
VT .....	39	936	1.18	1,104
VA .....	26,000	504,400	0.39	196,716
WV .....	4,500	87,300	0.39	34,047
Other States <sup>6</sup> .....	31,611	832,054	0.41	398,292
US .....	301,251	7,225,059	39.9	2,884,377

<sup>1</sup>Preliminary. <sup>2</sup>Based on turkeys placed Aug. 1, 1992, through Jul. 31, 1993. Excludes young turkeys lost. <sup>3</sup>Includes home consumption. <sup>4</sup>Live weight equivalent price. <sup>5</sup>Not published to avoid disclosing individual operations. Value of production included in Other States. <sup>6</sup>MI, NE, OK, OR, TX, UT, and WI combined to avoid disclosing individual operations.

NASS, Livestock and Economics Branch, (202) 720-6146.

**Table 8-56.—Turkeys: Poultz placed by commercial hatcheries, United States, 1988-97**

Year	Total all breeds	Year	Total all breeds
	<i>Thousands</i>		<i>Thousands</i>
1988 .....	261,406	1993 .....	308,871
1989 .....	290,678	1994 .....	317,468
1990 .....	304,863	1995 .....	321,651
1991 .....	308,083	1996 .....	327,213
1992 .....	307,823	1997 .....	321,487

NASS, Livestock and Economics Branch, (202) 720-6146.

**Table 8-57.—Turkeys: Poultz placed by commercial hatcheries, U.S. and regions, 1996 and 1997**

Month	United States			1997				
	1996	1997	1997 as percent of 1996	East North Central	West North Central	North and South Atlantic	South Central	West
	<i>Thousands</i>	<i>Thousands</i>	<i>Per cent</i>	<i>Thousands</i>	<i>Thousands</i>	<i>Thousands</i>	<i>Thousands</i>	<i>Thousands</i>
All breeds:								
Jan .....	27,391	27,121	99	3,806	7,586	9,690	3,310	2,729
Feb .....	27,596	27,145	98	3,654	8,025	9,135	3,520	2,811
Mar .....	27,935	27,610	99	3,699	8,141	9,633	3,231	2,906
Apr .....	29,742	28,220	95	3,814	8,365	9,691	3,359	2,991
May .....	29,682	29,111	98	3,978	8,688	9,749	3,496	3,200
June .....	27,998	28,381	101	3,651	8,802	9,609	3,274	3,045
July .....	28,916	30,092	104	3,893	9,104	10,005	3,320	3,770
Aug .....	27,496	26,321	96	3,426	8,069	8,769	3,162	2,895
Sept .....	24,154	23,907	99	3,250	7,077	8,646	2,722	2,212
Oct .....	25,354	24,587	97	3,511	7,292	8,629	3,130	2,025
Nov .....	23,830	23,281	98	3,245	6,955	7,761	3,178	2,142
Dec .....	27,119	25,711	95	3,307	7,904	9,030	3,366	2,104
Total .....	327,213	321,487	98	43,234	96,008	110,347	39,068	32,830

NASS, Livestock and Economics Branch, (202) 720-6146.

**Table 8-58.—Eggs: Production in specified countries, 1994–98**

Continent and country	1994	1995	1996	1997	1998 <sup>1</sup>
	<i>Million pieces</i>	<i>Million pieces</i>	<i>Million pieces</i>	<i>Million pieces</i>	<i>Million pieces</i>
<b>North America:</b>					
Canada .....	5,736	5,792	5,881	5,931	6,040
Mexico .....	25,896	25,760	26,045	28,170	29,000
United States .....	74,136	74,592	76,452	77,515	79,764
<b>Total .....</b>	<b>105,768</b>	<b>106,144</b>	<b>108,378</b>	<b>111,616</b>	<b>114,804</b>
<b>South America:</b>					
Brazil .....	13,460	16,065	15,932	12,596	13,600
Colombia .....	6,357	6,912	7,182	7,411	7,782
<b>Total .....</b>	<b>19,817</b>	<b>22,977</b>	<b>23,114</b>	<b>20,007</b>	<b>21,382</b>
<b>European Union:</b>					
Belgium and Luxembourg .....	3,600	3,858	3,700	3,615	3,488
Denmark .....	1,382	1,474	1,500	1,600	1,600
France .....	16,370	16,911	16,500	16,084	16,250
Germany <sup>2</sup> .....	13,960	13,838	13,922	14,025	14,075
Greece .....	2,500	2,600	2,650	2,640	2,640
Ireland .....	605	610	539	544	550
Italy .....	11,599	12,017	11,923	12,298	12,290
Netherlands .....	10,306	9,970	9,879	10,092	10,492
Portugal .....	1,831	1,869	1,797	1,779	1,700
Spain .....	9,670	9,983	8,952	9,450	9,250
United Kingdom .....	10,620	10,644	10,668	10,752	10,480
<b>Total .....</b>	<b>82,443</b>	<b>83,774</b>	<b>82,030</b>	<b>82,879</b>	<b>82,815</b>
<b>Eastern Europe:</b>					
Poland .....	6,100	6,500	6,600	7,700	8,300
Romania .....	3,300	3,650	5,200	4,750	4,700
<b>Total .....</b>	<b>9,400</b>	<b>10,150</b>	<b>11,800</b>	<b>12,450</b>	<b>13,000</b>
<b>Former Soviet Union:</b>					
Russia .....	37,400	33,720	31,500	31,900	35,000
Ukraine .....	10,145	9,500	8,633	8,246	8,400
<b>Total .....</b>	<b>47,545</b>	<b>43,220</b>	<b>40,133</b>	<b>40,146</b>	<b>43,400</b>
<b>Middle East:</b>					
Turkey .....	7,900	8,000	8,500	9,100	9,750
<b>Total .....</b>	<b>7,900</b>	<b>8,000</b>	<b>8,500</b>	<b>9,100</b>	<b>9,750</b>
<b>Asia:</b>					
China .....	281,010	301,860	312,640	336,000	345,000
Hong Kong .....	18	21	15	17	12
India .....	24,800	27,300	29,000	29,500	31,000
Japan .....	43,047	42,167	42,786	42,588	42,400
Korea, Republic of .....	8,094	8,317	8,640	8,790	8,458
Taiwan .....	5,673	6,237	6,828	7,636	7,950
Thailand .....	7,530	7,700	8,100	8,900	8,500
<b>Total .....</b>	<b>370,172</b>	<b>393,602</b>	<b>408,009</b>	<b>433,431</b>	<b>443,320</b>
<b>Grand total .....</b>	<b>643,045</b>	<b>667,867</b>	<b>681,964</b>	<b>709,629</b>	<b>728,471</b>

<sup>1</sup> Preliminary. <sup>2</sup> Includes the former East Germany. Prepared or estimated on the basis of official statistics of foreign governments, other foreign source materials, reports of U.S. Agricultural Counselors, Attaches, and Foreign Service Officers, results of office research, and related information. FAS, Production Estimates and Crop Assessment Division, (202) 720-8031.

**Table 8-59.—Eggs: Supply, distribution, and per capita consumption, United States, 1990–99<sup>1</sup>**

Year	Total egg production	Storage at beginning of the year <sup>1</sup>	Imports <sup>2</sup>	Exports <sup>2</sup>	Eggs used for hatching	Consumption		
						Storage at end of the year <sup>2</sup>	Total <sup>3</sup>	Per capita
	<i>Million dozen</i>	<i>Million dozen</i>	<i>Million dozen</i>	<i>Million dozen</i>	<i>Million dozen</i>	<i>Million dozen</i>	<i>Million dozen</i>	<i>Number</i>
1990 .....	5,687	11	9	101	678	12	4,916	236
1991 .....	5,801	12	2	154	709	13	4,938	235
1992 .....	5,905	13	4	157	732	13	5,020	236
1993 .....	6,006	13	5	159	770	11	5,085	236
1994 .....	6,178	11	4	188	805	15	5,184	239
1995 .....	6,231	15	4	209	847	11	5,182	236
1996 .....	6,351	11	5	253	864	9	5,242	237
1997 <sup>4</sup> .....	6,471	9	7	228	895	7	5,356	240
1998 <sup>5</sup> .....	6,630	7	6	227	927	8	5,487	244
1999 <sup>5</sup> .....	6,790	8	4	243	970	5	5,586	246

<sup>1</sup> Calendar years. <sup>2</sup> Shell eggs and the approximate shell-egg equivalent of egg product. <sup>3</sup> Shipments to territories now included in total consumption. <sup>4</sup> Preliminary. <sup>5</sup> Forecast. ERS, Animal Products Branch, (202) 694-5180.

**Table 8-60.—Eggs: Number of layers and pullets, rate of lay, and production, by State and United States, 1997 and 1998<sup>1</sup>**

State	1997			1998		
	Average number of layers during year	Rate of lay per layer during year <sup>2</sup>	Eggs produced	Average number of layers during year	Rate of lay per layer during year <sup>2</sup>	Eggs produced
	<i>Thousands</i>	<i>Number</i>	<i>Millions</i>	<i>Thousands</i>	<i>Number</i>	<i>Millions</i>
AL .....	10,749	232	2,499	10,929	230	2,518
AR .....	14,519	221	3,215	14,721	220	3,233
CA .....	25,632	260	6,663	25,161	263	6,608
CO .....	3,322	258	857	3,658	258	945
CT .....	3,389	271	917	3,095	271	839
DE .....	471	238	112	392	235	92
FL .....	9,865	253	2,499	10,084	251	2,528
GA .....	19,869	245	4,867	21,034	244	5,126
HI .....	724	238	172	632	247	156
ID .....	903	261	236	907	273	248
IL .....	3,157	266	841	3,156	266	838
IN .....	21,138	267	5,652	21,787	268	5,831
IA .....	21,187	261	5,527	23,044	259	5,969
KS .....	1,212	266	323	1,443	271	392
KY .....	2,847	249	710	3,517	245	863
LA .....	1,894	243	460	1,925	247	475
ME .....	5,026	285	1,434	4,789	287	1,373
MD .....	3,362	262	882	3,315	262	867
MA .....	540	289	156	479	290	139
MI .....	5,073	262	1,327	5,318	262	1,395
MN .....	11,712	252	2,957	12,032	262	3,152
MS .....	6,690	231	1,547	6,868	230	1,578
MO .....	6,693	257	1,719	6,644	261	1,732
MT .....	294	299	88	290	290	84
NE .....	9,525	259	2,469	10,398	260	2,706
NH .....	148	311	46	159	263	42
NJ .....	1,856	249	463	2,051	238	488
NM .....	1,141	265	302	1,121	267	299
NY .....	3,382	275	931	3,473	284	986
NC .....	12,240	228	2,794	11,280	227	2,555
ND .....	208	236	49	240	250	60
OH .....	25,929	269	6,976	27,845	266	7,395
OK .....	3,840	235	901	4,007	231	927
OR .....	2,938	267	783	2,853	266	758
PA .....	21,671	272	5,900	22,049	271	5,983
RI .....	90	267	24	77	286	22
SC .....	4,753	258	1,228	4,640	256	1,189
SD .....	2,065	262	542	2,265	273	618
TN .....	1,080	236	255	1,289	232	299
TX .....	16,830	249	4,186	17,079	249	4,257
UT .....	1,819	266	483	1,824	262	478
VT .....	186	300	56	184	296	55
VA .....	3,483	231	806	3,647	236	860
WA .....	5,051	273	1,379	5,022	278	1,394
WV .....	1,081	227	245	1,147	210	241
WI .....	3,711	269	998	3,837	269	1,031
WY .....	12	292	3.5	12	300	3.6
Oth Sts <sup>3</sup> .....	296	207	61	335	257	86
US <sup>4</sup> .....	303,604	255	77,532	312,058	256	79,717

<sup>1</sup> Annual production estimates for eggs reported on Dec. 1 through Nov. 30 marketing year. <sup>2</sup> Number of eggs produced during the year divided by average of layers hand during the year. <sup>3</sup> AK, AZ, and NV combined to avoid disclosure of individual operations. <sup>4</sup> Sum of States may not add to U.S. total due to rounding.

NASS, Livestock and Economics Branch, (202) 720-6146.

**Table 8-61.—Eggs, shell: Average price per dozen on consumer Grade A cartoned white eggs to volume buyers, store-door delivery, New York metropolitan area, 1989-98**

Year	Large	Year	Large
	<i>Cents</i>		<i>Cents</i>
1989 .....	81.91	1994 .....	67.23
1990 .....	82.19	1995 .....	67.26
1991 .....	77.52	1996 .....	73.00
1992 .....	65.41	1997 .....	81.21
1993 .....	72.53	1998 .....	75.80

AMS, Poultry Division, Market News Branch, (202) 720-6911.

**Table 8-62.—Eggs: Number, rate of lay, production, and value, United States, 1989–98<sup>1</sup>**

Year	Layers average number during year	Rate of lay per layer during year <sup>2</sup>	Eggs, total produced	Price per dozen	Value of production <sup>3</sup>
	<i>Thousands</i>	<i>Number</i>	<i>Millions</i>	<i>Dollars</i>	<i>1,000 dollars</i>
1989 .....	270,415	250	67,503	0.689	3,876,822
1990 .....	270,946	251	68,134	0.708	4,021,355
1991 .....	275,451	252	69,465	0.676	3,914,659
1992 .....	278,824	254	70,749	0.576	3,397,462
1993 .....	284,770	253	71,936	0.634	3,800,237
1994 .....	291,035	254	73,903	0.615	3,789,834
1995 .....	294,350	254	74,764	0.625	3,892,912
1996 .....	298,270	256	76,377	0.750	4,776,252
1997 .....	303,604	255	77,532	0.703	4,539,929
1998 <sup>4</sup> .....	312,058	256	79,717	NA	NA

<sup>1</sup> Annual production estimates for eggs reported on Dec. 1 through Nov. 30 marketing year. <sup>2</sup> Number of eggs produced during the year divided by the average of layers on hand during the year. <sup>3</sup> Value of sales plus value of eggs consumed in households of producers. <sup>4</sup> Preliminary. NA-not available.

NASS, Livestock and Economics Branch, (202) 720-6146.

**Table 8-63.—Eggs: Production and value, by States, 1997 preliminary)<sup>1</sup>**

State	Eggs produced	Price per dozen <sup>2</sup>	Value of production	State	Eggs produced	Price per dozen <sup>2</sup>	Value of production
	<i>Millions</i>	<i>Dollars</i>	<i>1,000 dollars</i>		<i>Millions</i>	<i>Dollars</i>	<i>1,000 dollars</i>
AL .....	2,499	1.060	220,745	NE .....	2,469	0.520	106,990
AR .....	3,215	1.030	275,954	NH .....	46	0.825	3,163
CA .....	6,663	0.621	344,810	NJ .....	463	0.623	24,037
CO .....	857	0.720	51,420	NM .....	302	0.593	14,924
CT .....	917	0.598	45,697	NY .....	931	0.666	51,671
DE .....	112	1.150	10,733	NC .....	2,794	0.875	203,729
FL .....	2,499	0.594	123,701	ND .....	49	0.530	2,164
GA .....	4,867	0.885	358,941	OH .....	6,976	0.614	356,939
HI .....	172	0.906	12,986	OK .....	901	0.873	65,548
ID .....	236	0.707	13,904	OR .....	783	0.644	42,021
IL .....	841	0.622	43,592	PA .....	5,900	0.653	321,058
IN .....	5,652	0.637	300,027	RI .....	24	0.589	1,178
IA .....	5,527	0.526	242,267	SC .....	1,228	0.768	78,592
KS .....	323	0.566	15,225	SD .....	542	0.500	22,583
KY .....	710	0.744	44,020	TN .....	255	0.931	19,784
LA .....	460	0.908	34,807	TX .....	4,186	0.768	267,904
ME .....	1,434	0.694	82,933	UT .....	483	0.576	23,184
MD .....	882	0.732	53,802	VT .....	56	0.608	2,827
MA .....	156	0.610	7,930	VA .....	806	0.951	63,876
MI .....	1,327	0.560	61,927	WA .....	1,379	0.653	75,024
MN .....	2,957	0.559	137,747	WV .....	245	1.210	24,704
MS .....	1,547	1.130	145,676	WI .....	998	0.564	46,906
MO .....	1,719	0.592	84,804	WY .....	3.5	0.630	184
MT .....	88	0.570	4,180	Other States	61	0.610	3,111
				US <sup>3</sup> .....	77,532	0.703	4,539,929

<sup>1</sup> Estimates cover the 12-month period Dec. 1, previous year through Nov. 30. <sup>2</sup> Average mid-month price of all eggs sold by producers including hatching eggs. <sup>3</sup> Sum of States may not add to U.S. total due to rounding.

NASS, Livestock and Economics Branch, (202) 720-6146.

**Table 8-64.—Eggs: Products under Federal inspection, United States, fiscal years 1997 and 1998**

Item	Quantity	
	1997	1998
Shell eggs broken .....	1,571,005	1,636,389
Edible liquid from shell eggs broken:		
Whole .....	1,177,648	1,239,886
White .....	551,066	535,611
Yolk .....	280,581	279,227
Total .....	2,009,295	2,054,724
Inedible liquid from shell eggs broken	153,298	180,075

NASS, Livestock and Economics Branch, (202) 720-6146.

**Table 8-65.—Poultry and poultry products: Cold storage holdings, end of month, United States, 1997 and 1998**

Month	Frozen eggs							
	Whites		Yolks		Whole & mixed		Unclassified	
	1997	1998	1997	1998	1997	1998	1997	1998
	<i>1,000 pounds</i>	<i>1,000 pounds</i>	<i>1,000 pounds</i>	<i>1,000 pounds</i>	<i>1,000 pounds</i>	<i>1,000 pounds</i>	<i>1,000 pounds</i>	<i>1,000 pounds</i>
January .....	1,014	843	971	1,240	7,555	9,058	1,483	908
February .....	1,190	1,005	1,212	1,097	7,822	8,814	1,251	1,358
March .....	1,016	1,108	1,010	1,011	5,502	6,761	1,018	1,494
April .....	1,094	972	1,016	1,027	5,516	5,347	859	1,876
May .....	1,036	1,006	959	1,162	5,346	8,394	813	2,305
June .....	1,126	856	885	1,000	5,826	6,306	502	2,014
July .....	1,133	869	1,293	986	5,984	6,996	477	2,907
August .....	946	915	1,209	933	8,398	5,802	550	1,343
September ..	1,023	753	1,041	896	8,184	5,618	587	928
October .....	899	857	1,214	741	7,977	6,683	825	750
November ...	943	895	967	898	7,649	6,943	705	560
December ...	1,197	1,247	1,173	1,028	6,615	8,107	764	652

Month	Frozen eggs, total		Frozen chicken					
	1997	1998	Broilers (Whole)		Hens		Other chicken (parts)	
			1997	1998	1997	1998	1997	1998
	<i>1,000 pounds</i>	<i>1,000 pounds</i>	<i>1,000 pounds</i>	<i>1,000 pounds</i>	<i>1,000 pounds</i>	<i>1,000 pounds</i>	<i>1,000 pounds</i>	<i>1,000 pounds</i>
January .....	11,023	12,049	39,202	24,683	5,300	5,546	632,680	628,043
February .....	11,475	12,274	41,766	21,962	5,878	5,150	652,246	638,221
March .....	8,546	10,374	35,561	18,895	6,933	5,056	672,591	672,092
April .....	8,485	9,222	35,883	21,797	8,408	5,013	699,968	680,740
May .....	8,154	12,967	32,839	18,361	7,748	8,874	690,903	656,337
June .....	8,339	10,176	31,062	19,053	8,316	9,183	672,280	582,859
July .....	8,887	11,758	26,402	15,448	10,254	9,283	629,410	553,780
August .....	11,103	8,993	28,145	12,037	7,900	8,822	530,915	545,143
September ..	10,835	8,195	24,994	13,844	10,662	7,722	520,653	584,132
October .....	10,915	9,031	25,009	12,692	8,052	5,848	554,243	600,342
November ...	10,264	9,296	28,727	15,418	5,900	5,545	575,273	642,346
December ...	9,749	11,034	24,227	18,630	7,407	6,256	582,618	692,463

Month	Frozen chicken, total		Frozen turkey					
	1997	1998	Whole		Other		Total	
			1997	1998	1997	1998	1997	1998
	<i>1,000 pounds</i>	<i>1,000 pounds</i>	<i>1,000 pounds</i>	<i>1,000 pounds</i>	<i>1,000 pounds</i>	<i>1,000 pounds</i>	<i>1,000 pounds</i>	<i>1,000 pounds</i>
January .....	677,182	658,272	195,359	228,445	205,686	269,138	401,045	497,583
February .....	699,890	665,333	235,197	263,275	211,181	249,393	446,378	512,668
March .....	715,085	696,043	267,303	281,371	229,179	245,649	496,482	527,020
April .....	744,259	707,550	296,572	315,803	246,702	263,861	543,274	579,664
May .....	731,490	683,572	352,840	350,508	258,935	263,632	611,775	614,140
June .....	711,658	611,095	402,541	389,464	265,309	267,036	667,850	656,500
July .....	666,066	578,511	440,077	423,662	274,245	278,114	714,322	701,776
August .....	566,960	566,002	478,733	462,814	263,279	244,013	742,012	706,827
September ..	556,309	605,698	530,101	463,797	240,605	235,688	770,706	699,485
October .....	587,304	618,882	490,653	439,273	245,988	219,459	736,641	658,732
November ...	609,900	663,309	208,021	118,185	230,535	192,178	438,556	310,363
December ...	614,252	717,349	176,014	105,819	239,039	198,490	415,053	304,309

Month	Frozen ducks		Total frozen poultry	
	1997	1998	1997	1998
	<i>1,000 pounds</i>	<i>1,000 pounds</i>	<i>1,000 pounds</i>	<i>1,000 pounds</i>
January .....	1,773	2,286	1,080,000	1,158,141
February .....	1,832	2,556	1,148,100	1,180,557
March .....	1,751	3,423	1,213,318	1,226,486
April .....	2,582	4,313	1,290,115	1,291,527
May .....	3,225	5,430	1,346,490	1,303,142
June .....	4,305	5,835	1,383,813	1,273,430
July .....	2,801	4,937	1,383,189	1,285,224
August .....	2,277	5,597	1,311,249	1,278,426
September ..	2,844	4,619	1,329,859	1,309,802
October .....	2,461	5,092	1,326,406	1,282,706
November ...	1,964	4,491	1,050,420	978,163
December ...	1,864	3,757	1,031,169	1,025,415

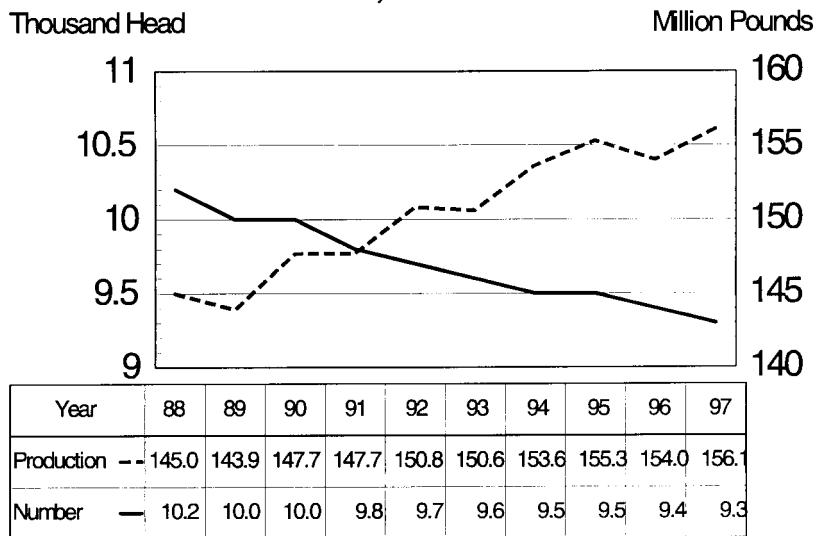
**Table 8-66.—Dairy products: Cold-storage holdings, end of month, United States, 1997 and 1998**

Month	Butter		American cheese	
	1997	1998	1997	1998
	<i>1,000 pounds</i>	<i>1,000 pounds</i>	<i>1,000 pounds</i>	<i>1,000 pounds</i>
January .....	23,166	34,166	383,791	406,958
February .....	35,976	44,199	379,446	410,717
March .....	50,286	55,919	392,486	421,979
April .....	86,762	67,415	428,671	439,787
May .....	104,162	72,702	446,157	443,730
June .....	93,663	60,550	464,397	450,216
July .....	85,582	50,979	469,008	461,123
August .....	69,468	41,070	459,450	441,605
September ..	43,936	34,077	434,028	417,489
October .....	26,581	31,164	414,798	394,692
November ...	15,365	28,698	405,484	388,529
December ...	20,788	25,910	410,418	407,692

Month	Swiss cheese		Total natural cheese	
	1997	1998	1997	1998
	<i>1,000 pounds</i>	<i>1,000 pounds</i>	<i>1,000 pounds</i>	<i>1,000 pounds</i>
January .....	13,702	14,380	501,539	509,323
February .....	13,513	15,441	494,622	521,508
March .....	12,809	13,571	517,030	533,103
April .....	11,896	12,581	555,429	557,620
May .....	13,237	11,302	584,327	568,481
June .....	12,096	11,460	604,845	583,717
July .....	11,516	10,823	604,896	595,821
August .....	11,507	11,560	582,270	576,768
September ..	11,040	12,741	543,675	552,995
October .....	11,630	12,362	504,970	522,712
November ...	13,450	11,911	474,379	494,469
December ...	13,843	11,838	480,412	517,215

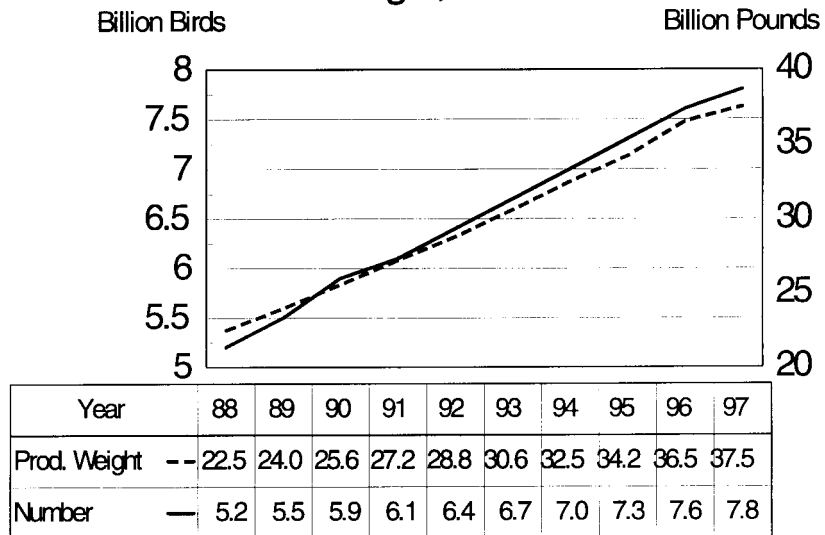
NASS, Livestock and Economics Branch, (202) 720-0585.

### Milk Cows: Production & Number, 1988-97



NASS Table 8-8

### Broilers: Number & Production Weight, 1988-1997



NASS Table 8-45