

CHAPTER III

STATISTICS OF OILSEEDS, FATS, AND OILS

This chapter includes information on cottonseed, flaxseed, olive oil, peanuts, soybeans, margarine, and fats and oils. Most butter statistics are included in the chapter on dairy and poultry statistics. Lard data are mostly in the chapter on livestock.

Table 3-1.—Cottonseed: All cotton harvested area and cottonseed production, farm disposition, marketing year average price per ton received by farmers, and value, United States, 1989–98

Year	Harvested area of all cotton	Cottonseed				
		Production	Total sales to oil mills	Other ¹	Marketing year average price	Value of production
	<i>1,000 acres</i>	<i>1,000 tons</i>	<i>1,000 tons</i>	<i>1,000 tons</i>	<i>Dollars</i>	<i>1,000 dollars</i>
1989	9,537.7	4,677.4	3,365.4	1,312.0	105.00	492,683
1990	11,731.6	5,968.5	4,311.2	1,657.3	121.00	722,313
1991	12,959.5	6,925.5	4,667.2	2,258.3	71.00	492,261
1992	11,123.3	6,230.1	3,920.2	2,309.9	97.50	608,438
1993	12,783.3	6,343.2	3,927.4	2,415.8	113.00	714,389
1994	13,322.3	7,603.9	5,012.2	2,591.7	101.00	771,315
1995	16,006.7	6,848.7	4,439.1	2,409.6	106.00	731,005
1996	12,888.1	7,143.5	4,363.2	2,780.3	126.00	914,564
1997	13,406.0	6,934.6	4,182.4	2,752.2	121.00	835,371
1998 ²	10,722.5	5,181.6	NA	NA	129.00	661,876

¹ Includes planting seed, feed, exports, inter-farm sales, shrinkage, losses, and other uses. ² Preliminary. NA-not available.

NASS, Crops Branch, (202) 720-2127.

Table 3-2.—Cottonseed: Production, farm disposition, and marketing year average price per ton received by farmers, by States, 1996–98

State	Production			Total sales to oil mills			Other ³			Price per ton for crop of—		
	1996	1997	1998 ¹	1996	1997	1998 ²	1996	1997	1998 ²	1996	1997	1998 ¹
	<i>1,000 tons</i>	<i>1,000 tons</i>	<i>1,000 tons</i>	<i>1,000 tons</i>	<i>1,000 tons</i>	<i>1,000 tons</i>	<i>1,000 tons</i>	<i>1,000 tons</i>	<i>1,000 tons</i>	<i>Dollars</i>	<i>Dollars</i>	<i>Dollars</i>
AL	273.0	196.0	196.0	95.0	87.0	178.0	109.0	113.00	111.00	111.00
AZ	324.0	312.0	225.0	124.0	73.0	200.0	239.0	155.00	134.00	149.00
AR	635.0	632.0	471.0	596.0	528.0	39.0	104.0	116.00	106.00	121.00
CA	1,020.0	942.0	547.0	134.0	153.0	886.0	789.0	176.00	174.00	177.00
FL	46.0	45.0	25.0	26.0	31.0	20.0	14.0	109.00	120.00	110.00
GA	681.0	660.0	526.0	329.0	332.0	352.0	328.0	105.00	108.00	104.00
KS	1.4	3.1	4.6	1.4	3.1	0.0	0.0	113.00	106.00	116.00
LA	499.0	359.0	240.0	340.0	206.0	159.0	153.0	124.00	110.00	113.00
MS	735.0	704.0	567.0	681.0	660.0	54.0	44.0	119.00	106.00	116.00
MO	234.0	223.0	142.0	188.0	148.0	46.0	75.0	105.00	111.00	131.00
NM	38.1	40.5	37.0	6.8	2.3	31.3	38.2	165.00	134.00	149.00
NC	343.0	321.0	349.0	38.0	63.0	305.0	258.0	103.00	114.00	114.00
OK	56.0	72.0	59.0	52.0	56.0	4.0	16.0	113.00	106.00	116.00
SC	155.0	142.0	121.0	100.0	89.0	55.0	53.0	95.50	108.00	108.00
TN	262.0	260.0	215.0	212.0	208.0	50.0	52.0	118.00	115.00	131.00
TX	1,784.0	1,983.0	1,410.0	1,440.0	1,543.0	344.0	440.0	129.00	114.00	131.00
VA	57.0	40.0	47.0	0.0	0.0	57.0	40.0	104.00	102.00	111.00
US	7,143.5	6,934.6	5,181.6	4,363.2	4,182.4	2,780.3	2,752.2	126.00	121.00	129.00

¹ Preliminary. ² Not available. ³ Includes planting seed, feed, exports, inter-farm sales, shrinkage, losses, and other uses.

NASS, Crops Branch, (202) 720-2127.

Table 3-3.—Cottonseed: Crushings, output of products and product prices, United States, 1988-97

Year beginning August	Quantity crushed	Cottonseed products and prices				Year beginning August	Quantity crushed	Cottonseed products and prices			
		Oil		Cake and meal				Oil		Cake and meal	
		Quantity	Price ¹	Quantity	Price ²			Quantity	Price ¹	Quantity	Price ²
	1,000 tons	Mil-lion pounds	Cents per pound	1,000 tons	Dollars per ton		1,000 tons	Mil-lion pounds	Cents per pound	1,000 tons	Dollars per ton
1988 ..	3,730	1,243	20.0	1,689	185.00	1993 ..	3,470	1,119	30.30	1,563	164.30
1989 ..	2,974	1,039	23.3	1,327	163.30	1994 ..	3,947	1,312	29.23	1,830	112.02
1990 ..	3,369	1,154	22.3	1,691	130.75	1995 ..	3,882	1,229	26.53	1,748	190.74
1991 ..	3,981	1,279	20.1	1,764	140.50	1996 ..	3,860	1,216	25.58	1,752	192.00
1992 ..	3,629	1,137	30.07	1,533	161.78	1997 ..	3,885	1,230	28.84	1,770	145.00

¹Tanks, f.o.b. Valley Points. ²41 percent protein, solvent, Memphis.

ERS, Field Crops Branch, (202) 694-5300. Compiled from annual reports of the U.S. Department of Commerce.

Table 3-4.—Cottonseed: Quality of cottonseed and number of samples graded, United States, 1988-97¹

Year beginning August ¹	Cottonseed quality analysis ²					Quantity ³	Quality ⁴	Average grade ⁵	Samples graded ⁶
	Oil	Ammonia	Moisture	Free fatty acids	Foreign matter				
	Percent	Percent	Percent	Percent	Percent	Index	Index		Number
1988	17.9	4.02	10.2	0.9	1.3	99.96	98.6	98.9	36,235
1989	18.0	3.96	9.9	0.7	1.5	100.51	98.9	99.6	24,301
1990	17.4	4.09	10.1	0.8	1.3	99.00	98.9	97.9	30,350
1991	18.0	3.92	10.2	0.8	1.6	100.45	98.6	99.1	32,978
1992	17.5	3.68	10.5	0.8	1.3	97.28	99.3	96.3	27,292
1993	17.7	3.85	9.7	0.6	1.5	98.53	98.3	97.4	21,867
1994	17.8	3.80	10.5	1.0	1.1	98.81	98.3	97.1	21,877
1995	17.8	3.98	9.8	0.6	1.1	99.80	99.4	99.1	14,169
1996	18.1	3.92	10.2	0.9	1.1	100.78	99.1	100.7	14,444
1997	17.7	3.93	10.7	0.7	0.9	99.39	99.3	98.7	9,711

¹U.S. averages not fully representative of entire crop because of relatively small volume of seed graded in some areas.

²These basic factors are combined to form indexes of quantity and quality which in turn are used to determine the official grade of cottonseed in accordance with the United States Official Standards for Grades.

³The quantity index measures the oil and cake or meal in the cottonseed, taking into account variations in the quantity of oil, and ammonia.

⁴The quality index measures the deterioration in oil and meal and takes into account the excesses of moisture and foreign matter and free fatty acids.

⁵The average grade is the product of the quantity index times the quality index. The base grade is 100.0.

⁶Samples graded by licensed chemists under the supervision of the U.S. Department of Agriculture.

AMS, Cotton Division, (901) 384-3016.

Table 3-5.—Cottonseed oil and cottonseed cake and meal: United States exports by country of destination 1994/95–1996/97 (Marketing year October–September)

Continent and country of destination	Cottonseed oil ¹			Cottonseed cake and meal		
	1994/95	1995/96	1996/97 ²	1994/95	1995/96	1996/97 ²
	<i>Metric tons</i>	<i>Metric tons</i>	<i>Metric tons</i>	<i>Metric tons</i>	<i>Metric tons</i>	<i>Metric tons</i>
North and Central America; incl. Caribbean:						
Canada	19,959	26,808	34,997	505	1,465	1,140
Dominican Republic	18	27	66	0	454	0
El Salvador	27,635	21,412	21,461	0	0	0
Guatemala	1,200	900	0	91	1,437	3,461
Mexico	3,248	1,495	7,206	62,290	53,061	57,557
Total ³	59,229	56,738	65,563	62,886	56,418	62,158
South America:						
Venezuela	8	0	4	0	0	200
Total ³	2,168	13,146	10,813	210	217	479
Europe:						
Austria	0	0	0	2,452	4,248	3,111
Belgium and Luxembourg	59	0	0	2,775	10,170	2,451
Denmark	0	5	0	129	0	0
France	0	0	0	28	40	131
Germany	0	108	226	3,815	9,004	4,574
Netherlands	700	1,998	2,199	0	1,365	0
United Kingdom	7,371	9,562	40	120	20	159
Total ³	8,614	14,868	2,641	17,893	30,804	17,832
Africa:						
Egypt	0	0	0	0	0	0
Total ³	0	4,336	0	1,067	1,000	40
Asia:						
Hong Kong	0	0	1,666	0	0	40
Israel	3,049	1,090	1,413	0	0	0
Japan	15,503	12,467	6,969	2,289	3,173	738
Korea, Rep. of	9,559	2,984	1,556	16,350	27,559	17,067
Total ³	34,281	19,443	15,209	18,951	31,033	18,397
Oceania	59	296	36	0	223	0
Grand total ⁴	104,351	108,826	94,262	101,007	119,695	98,906

¹ Crude and refined (includes shipments under P.L. 480). ² Preliminary. ³ Includes quantities exported to countries not shown. ⁴ May not add due to rounding.

FAS, Cotton, Oilseeds, Tobacco and Seeds Division, (202) 720-5710. (Compiled from reports of the U.S. Department of Commerce.)

Table 3-6.—Cottonseed: Area, yield, and production in specified countries, 1995/96–1997/98¹

Continent and country	Area ²			Yield per hectare			Production		
	1995/96	1996/97	1997/98 ³	1995/96	1996/97	1997/98 ³	1995/96	1996/97	1997/98 ³
	1,000 hectares	1,000 hectares	1,000 hectares	Metric tons	Metric tons	Metric tons	1,000 metric tons	1,000 metric tons	1,000 metric tons
North and Central America, and the Caribbean:									
Mexico	318	246	200	1.31	1.50	1.65	415	368	329
United States	6,478	5,208	5,370	0.96	1.24	1.17	6,213	6,481	6,291
Total ⁴	6,835	5,485	5,601	0.97	1.25	1.19	6,663	6,870	6,639
South America:									
Argentina	960	880	800	0.78	0.64	0.63	744	560	500
Brazil	1,130	695	850	0.58	0.71	0.76	655	490	650
Colombia	112	86	54	1.25	1.21	1.30	140	104	70
Paraguay	310	105	200	0.60	0.64	0.60	185	67	120
Peru	109	109	85	0.84	0.91	0.54	92	99	46
Total ⁴	2,731	1,969	2,091	0.70	0.71	0.70	1,901	1,390	1,455
European Union:									
Greece	440	420	388	1.52	1.13	1.53	670	475	594
Spain	31	76	108	1.45	1.51	1.52	45	115	164
Total ⁴	472	497	497	1.52	1.19	1.53	716	591	759
Former Soviet Union:⁵									
Azerbaijan	210	180	200	0.79	0.75	0.38	165	135	75
Kazakhstan	110	110	90	1.21	0.94	1.22	133	103	110
Kyrgyzstan	33	40	25	1.21	1.00	1.40	40	40	35
Tajikistan	270	235	214	0.80	0.68	0.92	216	160	196
Turkmenistan	450	450	450	1.22	0.58	0.82	550	260	370
Uzbekistan	1500	1487	1483	1.47	1.35	1.55	2200	2014	2300
Total	2,573	2,502	2,462	1.28	1.08	1.25	3,304	2,712	3,086
Africa:									
Cameroon	159	191	170	1.16	1.08	1.03	184	206	175
Egypt	306	387	374	1.27	1.52	1.28	390	590	480
Mali	336	420	500	0.91	0.82	0.80	307	346	399
South Africa, Republic of									
Sudan	115	116	120	0.70	0.63	0.71	80	73	85
Tanzania	220	280	265	1.13	0.82	0.79	249	230	210
United Republic of									
Zimbabwe	364	280	280	0.40	0.43	0.41	147	121	114
Zimbabwe	264	313	270	0.69	0.51	0.59	182	160	160
Total ⁴	3,705	4,138	4,366	0.72	0.73	0.72	2,675	3,022	3,127
Asia and the Middle East:									
China, Peoples Republic of									
India	5,422	4,722	4,500	1.58	1.60	1.84	8,580	7,560	8,280
Iran	9,063	9,166	8,850	0.62	0.64	0.58	5,650	5,897	5,095
Iran	290	300	240	0.80	0.81	0.73	233	242	175
Israel	30	30	30	2.43	3.07	2.93	73	92	88
Pakistan	3,048	3,148	2,959	1.17	1.01	1.02	3,570	3,188	3,004
Syria	195	220	251	2.28	2.39	2.90	445	525	727
Turkey	757	743	710	1.68	1.58	1.53	1,275	1,175	1,085
Total ⁴	19,251	18,764	17,930	1.04	1.01	1.04	20,073	18,930	18,669
Australia	301	396	438	1.98	2.13	2.16	595	842	944
World Total⁶	35,885	33,768	33,402	1.00	1.02	1.04	35,933	34,363	34,685

¹ Split year includes Northern Hemisphere crop harvested in the late months of the first year shown combined with Southern Hemisphere and certain Northern Hemisphere crops harvested in the early months of the following year. ² Harvested area. ³ Preliminary. ⁴ Includes only countries shown. ⁵ Former Soviet Union; includes all 15 republics of the USSR. ⁶ Includes all countries in USDA data base.

FAS, Cotton, Oilseeds, Tobacco and Seeds Division, (202) 720-5710. (Compiled from reports of the U.S. Department of Commerce.)

Table 3-7.—Flaxseed: Area, yield, production, disposition, and value, United States, 1989–98

Year	Area planted	Area harvested	Yield per harvested acre	Production	Marketing year average price per bushel received by farmers	Value of production
	<i>1,000 acres</i>	<i>1,000 acres</i>	<i>Bushels</i>	<i>1,000 bushels</i>	<i>Dollars</i>	<i>1,000 dollars</i>
1989	195	163	7.5	1,215	7.20	8,724
1990	260	253	15.1	3,812	5.27	20,108
1991	356	342	18.1	6,200	3.52	21,845
1992	171	165	19.9	3,288	4.12	13,543
1993	206	191	18.2	3,482	4.25	14,848
1994	178	171	17.1	2,922	4.63	13,590
1995	165	147	15.0	2,212	5.19	11,475
1996	96	92	17.4	1,602	6.37	10,197
1997	151	146	16.6	2,420	5.81	14,046
1998 ¹	336	329	20.4	6,708	5.10	34,082

¹ Preliminary.
NASS, Crops Branch, (202) 720-2127.

Table 3-8.—Flaxseed: Supply and disappearance, United States, 1988–97

Year beginning June	Supply				Disappearance			
	Stocks June 1	Production	Imports	Total	Total used for seed	Exports	Crushings ¹	Total domestic disappearance ²
	<i>1,000 bushels</i>	<i>1,000 bushels</i>	<i>1,000 bushels</i>	<i>1,000 bushels</i>	<i>1,000 bushels</i>	<i>1,000 bushels</i>	<i>1,000 bushels</i>	<i>1,000 bushels</i>
1988	2,325	1,615	6,730	10,670	158	764	8,500	8,658
1989	1,307	1,215	7,260	9,782	211	1,054	8,250	8,484
1990	244	3,812	6,715	10,771	288	549	8,800	9,251
1991	971	6,200	4,371	11,542	139	541	9,050	9,445
1992	1,556	3,288	6,035	10,879	167	230	8,600	9,104
1993	1,545	3,480	5,118	10,143	144	126	8,650	8,863
1994	1,155	2,922	6,005	10,082	134	72	8,550	8,840
1995	1,170	2,211	7,248	10,681	91	119	9,000	9,280
1996	1,230	1,601	8,390	11,222	123	144	10,000	10,625
1997	453	2,555	7,800	10,808	142	135	9,750	10,634

¹ From domestic and imported seed. ² Total supply minus exports and stocks June 1 of following year.
ERS, Field Crops Branch, (202) 694-5300.

Table 3-9.—Flaxseed: Area, yield, and production, by States, 1996–98

State	Area planted			Area harvested			Yield per harvested acre			Production		
	1996	1997	1998	1996	1997	1998	1996	1997	1998	1996	1997	1998
	<i>1,000 acres</i>	<i>1,000 acres</i>	<i>1,000 acres</i>	<i>1,000 acres</i>	<i>1,000 acres</i>	<i>1,000 acres</i>	<i>Bushels</i>	<i>Bushels</i>	<i>Bushels</i>	<i>1,000 bushels</i>	<i>1,000 bushels</i>	<i>1,000 bushels</i>
MN	4	6	30	4	6	27	15.0	16.0	16.0	60	96	432
ND	80	125	280	77	121	277	18.0	16.5	21.0	1,386	1,997	5,817
SD	10	15	15	9	14	14	14.0	18.0	21.0	126	252	294
Other States	2	5	11	2	5	11	15.0	15.0	15.0	30	75	165
US ¹	96	151	336	92	146	329	17.4	16.6	20.4	1,602	2,420	6,708

¹ Estimates include all States except AK and HI.
NASS, Crops Branch, (202) 720-2127.

Table 3-10.—Flaxseed: Marketing year average price and value of production, by States, crop of 1996, 1997, and 1998

State	Marketing year average price per bushel			Value of production		
	1996	1997	1998 ¹	1996	1997	1998 ¹
	<i>Dollars</i>	<i>Dollars</i>	<i>Dollars</i>	<i>1,000 dollars</i>	<i>1,000 dollars</i>	<i>1,000 dollars</i>
MN	6.40	5.85	4.70	384	562	2,030
ND	6.38	5.81	5.10	8,843	11,603	29,667
SD	6.22	5.68	4.80	784	1,431	1,411
Other States	6.20	6.00	5.90	186	450	974
US ²	6.37	5.81	5.10	10,197	14,046	34,082

¹ Preliminary. ² Estimates include all States except AK and HI.
NASS, Crops Branch, (202) 720-2127.

Table 3-11.—Flaxseed: Support operations, United States, 1989-98

Marketing year beginning June 1	Loan rate per bushel ¹	Put under loan ²		Acquired by CCC under loan program ³	Owned by CCC at end of marketing year
		Quantity	Percentage of production		
	<i>Dollars</i>	<i>1,000 bushels</i>	<i>Percent</i>	<i>1,000 bushels</i>	<i>1,000 bushels</i>
1989/90	(4)
1990/91	(4)
1991/92	4.98	262.5	4.2	105.7	0
1992/93	4.98	83.9	2.6	31.4	0
1993/94	4.98	105.4	3.0	30.4	0
1994/95	4.87	185.7	6.3	39.3	0
1995/96	4.87	51.8	2.3	0.0	0
1996/97	5.07	39.3	2.5	0.0	0
1997/98	5.21	103.6	4.8	0.0	0
1998/99	5.21

¹ The national average loan rate was also known as the price support rate prior to enactment of the Federal Agriculture Improvement and Reform Act of 1996. ² Includes loans made. Does not include quantity on which loan deficiency payments were made. ³ Acquisition through loan forfeitures from the crop harvested in the year indicated and not acquisitions during that year. ⁴ Loan programs not authorized for 1988 through 1990.

FSA, Feed Grains & Oilseeds Analysis Group, (202) 720-8838.

Table 3-12.—Flaxseed and linseed oil and meal: Average price Minneapolis, 1988-97

Year ¹	Average price received by farmers per bushel	Minneapolis		Year ¹	Average price received by farmers per bushel	Minneapolis	
		Oil, per pound ²	Meal, per ton ³			Oil, per pound ²	Meal, per ton ³
	<i>Dollars</i>	<i>Cents</i>	<i>Dollars</i>		<i>Dollars</i>	<i>Cents</i>	<i>Dollars</i>
1988	7.56	39.5	178.45	1993	4.25	31.8	139.55
1989	7.20	40.2	139.30	1994	4.63	33.7	91.96
1990	5.27	38.0	130.10	1995	5.25	36.5	133.60
1991	3.52	32.0	127.57	1996	6.21	36.0	169.75
1992	4.12	31.5	133.60	1997	5.75	37.8	131.40

¹ Year beginning June 1. ² Raw oil in tank cars. ³ Bulk carlots, 34 percent protein.
ERS, Field Crops Branch, (202) 694-5300.

Table 3-13.—Flaxseed and products: Flaxseed crushed; production, imports, and exports of linseed oil, cake, and meal; and June 1 stocks of oil, United States, 1988–97

Year beginning June	Total flaxseed crushed	Linseed oil			Linseed cake and meal		
		Stocks June 1	Production	Exports	Production	Imports for consumption	Exports
	<i>1,000 bushels</i>	<i>Million pounds</i>	<i>Million pounds</i>	<i>Million pounds</i>	<i>1,000 tons</i>	<i>1,000 tons</i>	<i>1,000 tons</i>
1988	8,500	41	170	12	156	11	63
1989	8,250	48	165	12	153	9	23
1990	8,800	37	176	6	162	3	41
1991	9,050	40	182	12	167	0	40
1992	8,600	40	172	8	159	2	55
1993	8,650	54	174	3	160	2	49
1994	8,550	63	171	24	158	5	58
1995	9,000	45	180	23	167	4	56
1996	10,000	50	200	66	185	1	77
1997	10,500	35	210	58	194	1	73

ERS, Field Crops Branch, (202) 694-5300.

Table 3-14.—Sunflowerseed, sunflowerseed oil, and sunflowerseed cake and meal: United States exports by country of destination 1994/95–1996/97¹

Continent and country of destination	Sunflowerseed			Sunflowerseed oil ²			Sunflowerseed cake and meal		
	1994/95	1995/96	1996/97 ³	1994/95	1995/96	1996/97 ³	1994/95	1995/96	1996/97 ³
	<i>Metric tons</i>	<i>Metric tons</i>	<i>Metric tons</i>	<i>Metric tons</i>	<i>Metric tons</i>	<i>Metric tons</i>	<i>Metric tons</i>	<i>Metric tons</i>	<i>Metric tons</i>
North and Central America; incl. Caribbean:									
Canada	14,982	14,202	12,306	16,396	11,470	13,610	451	301	84
Mexico	5,861	6,648	26,219	102,542	120,435	157,239	1,734	2,941	2,375
Total ⁴	20,921	20,909	38,630	125,449	143,210	187,224	2,185	3,242	2,474
South America:									
Venezuela	1	0	0	0	2,799	10	0	0	0
Total ⁴	185	811	1,578	676	6,498	5,423	0	0	0
Europe:									
France	16,474	572	1,099	3	0	0	0	3,215	0
Germany	44,015	52,025	52,652	3	6	0	45	0	45
Netherlands	64,768	10,010	8,588	25,447	7,988	6,699	0	0	21
Spain	50,761	27,538	26,458	0	0	0	0	0	0
Total ⁴	191,859	111,183	113,211	37,696	7,995	14,760	22,658	17,664	10,412
Former Soviet Union ⁵	0	2,773	51	60	705	28	0	0	0
Africa:									
Algeria	0	0	0	67,935	52,932	87,507	0	0	0
Egypt	0	0	0	26,184	71,249	47,838	0	0	0
Total ⁴	241	224	0	94,119	124,181	140,294	0	0	0
Asia:									
Japan	654	1,191	1,639	2,117	2,370	2,452	0	41	0
Korea, Rep. of	1,821	1,429	707	96	129	130	0	0	0
Turkey	3,907	2,457	16,384	9,409	0	2,000	0	0	0
Total ⁴	9,668	11,896	35,087	22,681	38,679	21,830	0	41	39
Oceania	1,331	1,500	706	3,092	285	0	0	0	0
Grand total ⁶	224,204	149,296	189,264	284,652	321,554	369,559	24,844	20,947	12,925

¹ For sunflowerseed, year begins September 1; for sunflowerseed oil cake and meal, year begins October 1. ² Crude and refined oil. ³ Preliminary. ⁴ Includes quantities exported to countries not shown. ⁵ Former Soviet Union; includes all 15 Republics of the USSR. ⁶ May not add due to rounding.

FAS, Cotton, Oilseeds, Tobacco and Seeds Division, (202) 720-5710. Compiled from reports of the U.S. Department of Commerce.

Table 3-15.—Peanuts: Area, yield, production, disposition, marketing year average price per pound received by farmers, and value, United States, 1989–98

Year	Area planted	Peanuts for nuts				
		Area harvested	Yield per acre	Production ¹	Marketing year average	Value of production
	<i>1,000 acres</i>	<i>1,000 acres</i>	<i>Pounds</i>	<i>1,000 pounds</i>	<i>Cents</i>	<i>1,000 dollars</i>
1989	1,665.2	1,644.7	2,426	3,989,995	28.0	1,118,875
1990	1,846.0	1,815.5	1,985	3,603,650	34.7	1,249,899
1991	2,039.2	2,015.7	2,444	4,926,570	28.3	1,392,041
1992	1,686.6	1,669.1	2,567	4,284,416	30.0	1,285,361
1993	1,733.5	1,689.8	2,008	3,392,415	30.4	1,030,904
1994	1,641.0	1,618.5	2,624	4,247,455	28.9	1,229,012
1995	1,537.5	1,517.0	2,282	3,461,475	29.3	1,013,323
1996	1,401.5	1,380.0	2,653	3,661,205	28.1	1,029,774
1997	1,434.0	1,413.8	2,503	3,539,380	28.3	1,002,703
1998 ²	1,511.0	1,465.5	2,683	3,931,275	25.7	1,008,488

¹ Estimates comprised of quota and non-quota peanuts. ² Preliminary.
NASS, Crops Branch, (202) 720-2127.

Table 3-16.—Peanuts, farmers' stock: Stocks, production, and quantity milled, United States, 1988–97

Year beginning August	Stocks Aug. 1 ¹	Production harvested for nuts ¹	Total supply	Milled ^{1,2}
	<i>1,000 pounds</i>	<i>1,000 pounds</i>	<i>1,000 pounds</i>	<i>1,000 pounds</i>
1988	4,622	3,980,917	3,985,539	3,621,062
1989	51,248	3,989,995	4,041,243	3,889,374
1990	29,541	3,603,650	3,633,191	3,213,610
1991	41,559	4,926,570	4,968,129	4,478,126
1992	117,121	4,284,416	4,401,537	4,097,584
1993	61,252	3,392,415	3,453,667	3,147,078
1994	67,428	4,247,455	4,314,883	3,222,198
1995	48,574	3,461,475	3,510,049	2,558,954
1996	66,392	3,661,205	3,727,597	2,919,054
1997	22,714	3,537,050	3,559,764	2,899,138

¹ Net weight basis. ² Includes peanuts milled for seed.
NASS, Crops Branch, (202) 720-2127.

Table 3-17.—Peanuts: Crushings, and oil and meal stocks, production, and foreign trade, United States, 1988–97

Year beginning August	Peanuts crushed (shelled basis)	Peanut oil				Peanut cake and meal	
		Stocks Aug. 1 ¹	Production of crude	Imports	Exports ²	Stocks Aug. 1 ³	Production
	<i>1,000 pounds</i>	<i>1,000 pounds</i>	<i>1,000 pounds</i>	<i>1,000 pounds</i>	<i>1,000 pounds</i>	<i>1,000 pounds</i>	<i>1,000 pounds</i>
1988	612,200	21,352	250,498	1,870	11,312	12,095	348,662
1989	469,351	29,290	193,000	1,208	18,536	29,349	261,465
1990	517,712	10,970	213,112	10,000	25,000	14,702	299,820
1991	828,986	21,198	356,276	1,000	151,000	8,856	459,457
1992	669,942	15,572	285,904	460	59,338	9,804	377,301
1993	503,674	19,779	212,216	11,421	61,145	11,395	292,093
1994	738,221	4,272	314,189	3,773	96,866	13,405	415,394
1995	751,281	19,763	320,909	4,678	108,146	14,910	420,919
1996	520,413	26,992	220,877	14,445	20,625	7,212	294,590
1997	409,249	22,936	175,853	8,118	13,097	8,291	228,276

¹ Crude plus refined. ² Reported as edible peanut oil and crude peanut oil; in this tabulation added without converting. ³ Holding at producing mills only.

NASS, Crops Branch, (202) 720-2127, ERS, and Bureau of the Census.

Table 3-18.—Cleaned peanuts (roasting stock): Supply and disposition, United States, 1988–97

Year beginning August	Supply				Disposition		
	Stocks Aug. 1	Production	Imports	Total	Exports	Domestic disappearance	
						Total	Per capita
	<i>1,000 pounds</i>	<i>1,000 pounds</i>	<i>1,000 pounds</i>	<i>1,000 pounds</i>	<i>1,000 pounds</i>	<i>1,000 pounds</i>	<i>Pounds</i>
1988	46,029	240,619	650	287,298	105,746	132,289	0.54
1989	49,262	237,618	55	286,935	126,682	115,422	0.46
1990	44,824	225,418	9	270,251	118,664	110,986	0.44
1991	40,601	281,983	114	322,698	157,442	96,258	0.38
1992	69,018	274,285	0	343,303	136,391	135,024	0.53
1993	71,938	186,232	9	258,179	83,438	141,056	0.54
1994	33,685	296,057	7,308	337,050	102,351	164,079	0.63
1995	70,620	188,954	8,628	268,202	73,937	163,283	0.62
1996	30,981	264,337	6,988	302,306	80,607	167,928	0.63
1997	53,771	229,912	5,907	289,590	75,154	183,868	0.68

¹ Not available.

NASS, Crops Branch, (202) 720-2127, and ERS. Foreign trade from the Bureau of the Census.

Table 3-19.—Shelled peanuts (all grades): Supply, exports, and quantity crushed, United States, 1988–97

Year beginning August	Supply						Exports	Crushed
	Stocks Aug. 1		Production		Imports	Total		
	Edible	Oil stock	Edible	Oil stock				
	<i>1,000 pounds</i>	<i>1,000 pounds</i>	<i>1,000 pounds</i>	<i>1,000 pounds</i>	<i>1,000 pounds</i>	<i>1,000 pounds</i>	<i>1,000 pounds</i>	
1988	565,779	22,647	2,095,351	406,626	2,094	3,092,497	437,867	612,200
1989	513,679	44,397	2,319,780	374,859	1,477	3,254,192	577,807	469,351
1990	455,586	15,194	1,836,052	330,102	20,571	2,657,505	401,149	517,712
1991	386,155	65,950	2,538,397	616,170	27,000	3,633,672	630,000	828,986
1992	595,022	57,829	2,376,782	533,641	2,000	3,565,274	611,250	669,942
1993	871,207	43,760	1,748,734	425,710	1,420	3,090,831	352,500	503,674
1994	679,639	42,054	1,741,824	511,635	55,385	3,030,537	583,142	738,221
1995	752,814	58,188	1,253,451	491,818	108,303	2,664,574	564,021	751,281
1996	370,431	126,318	1,692,581	305,674	95,041	2,590,045	440,438	520,413
1997	498,954	41,000	1,694,016	290,882	101,792	2,626,644	455,264	409,249

NASS, Crops Branch, (202) 720-2127, and ERS. Foreign trade from the U.S. Bureau of the Census.

Table 3-20.—Peanuts: Shelled (raw basis) by types, used in primary products and apparent disappearance of peanuts (cleaned in shell), United States, 1988–97

Type, and year beginning August	Shelled uses					Apparent disappearance (cleaned in shell) ²
	Peanut butter ¹	Snack	Candy	Other	Total	
	1,000 pounds	1,000 pounds	1,000 pounds	1,000 pounds	1,000 pounds	1,000 pounds
Virginia:						
1988	78,436	112,101	37,145	16,448	241,130
1989	90,622	130,000	28,701	13,691	263,014
1990	101,069	142,113	26,043	17,017	286,242
1991	89,045	142,520	51,312	14,699	297,576
1992	92,355	124,875	49,223	9,442	275,895
1993	63,270	99,381	44,889	15,101	222,641
1994	51,354	97,389	26,857	15,316	190,916
1995	71,310	93,041	25,176	13,656	203,183
1996	64,274	91,882	24,158	12,852	193,166
1997	59,228	80,309	28,428	14,135	182,100
Runner:						
1988	741,197	237,008	259,680	18,367	1,256,252
1989	773,985	234,661	278,062	20,102	1,306,810
1990	580,691	189,254	259,995	19,483	1,049,423
1991	759,747	180,609	244,815	18,062	1,203,233
1992	674,962	203,732	259,498	14,583	1,152,775
1993	635,047	227,286	298,325	18,738	1,179,396
1994	644,711	185,377	302,697	19,325	1,152,110
1995	634,350	169,142	304,285	15,942	1,123,719
1996	634,387	176,851	318,924	19,185	1,149,347
1997	676,839	206,718	302,791	20,598	1,206,946
Spanish:						
1988	43,668	32,372	30,082	1,163	107,285
1989	32,711	28,150	23,395	2,889	87,145
1990	60,624	23,841	19,286	1,388	105,189
1991	37,575	23,132	31,490	1,412	93,609
1992	30,593	24,168	19,603	956	75,320
1993	28,689	22,200	19,204	2,462	72,555
1994	13,758	18,782	20,076	2,213	54,829
1995	22,416	14,906	21,202	2,417	60,941
1996	28,870	21,369	17,764	1,788	69,791
1997	24,163	19,581	19,798	738	64,580
All types:						
1988	860,301	381,481	326,907	35,978	1,604,667	237,386
1989	897,318	392,811	330,158	36,682	1,656,969	242,056
1990	742,384	355,258	305,324	37,888	1,440,854	229,641
1991	886,367	346,255	327,617	34,173	1,594,418	253,566
1992	797,910	352,775	328,324	24,981	1,503,990	271,365
1993	727,006	348,867	362,418	36,301	1,474,592	224,485
1994	709,823	301,548	349,630	36,854	1,397,855	259,122
1995	728,076	277,089	350,663	32,015	1,387,843	228,593
1996	727,531	290,102	360,846	33,825	1,412,304	241,547
1997	760,230	306,908	351,017	35,471	1,453,626	253,115

¹ Excludes peanut butter made by manufacturers for own use in candy and includes peanut butter used in sandwiches. Includes peanut butter used in spreads, sandwiches, and cookies. ² Apparent disappearance represents stocks beginning of year plus production, minus stocks at end of year.

NASS, Crops Branch, (202) 720-2127, and ERS.

Table 3-21.—Peanuts: Area, yield, and production, by States, 1996–98

State	Area planted			Peanuts for nuts								
	1996	1997	1998 ¹	Area harvested			Yield per harvested acre			Production ²		
				1996	1997	1998 ¹	1996	1997	1998 ¹	1996	1997	1998 ¹
	1,000 acres	1,000 acres	1,000 acres	1,000 acres	1,000 acres	1,000 acres	Pounds	Pounds	Pounds	1,000 pounds	1,000 pounds	1,000 pounds
AL	192.0	194.0	197.0	191.0	193.0	196.0	2,355	1,930	2,100	449,805	372,490	411,600
FL	90.0	92.0	96.0	82.0	84.0	88.0	2,880	2,715	2,500	236,160	228,060	220,000
GA	535.0	520.0	535.0	533.0	519.0	530.0	2,690	2,570	2,900	1,433,770	1,333,830	1,537,000
NM	16.5	18.0	20.0	16.5	17.3	20.0	2,300	2,700	2,750	37,950	46,710	55,000
NC	125.0	124.0	125.0	125.0	123.0	125.0	2,940	2,680	3,200	367,500	329,640	400,000
OK	85.0	79.0	80.0	81.0	77.0	75.0	2,410	2,400	2,300	195,210	184,800	172,500
SC	11.0	11.0	12.0	10.5	10.5	11.5	3,100	2,900	2,150	32,550	30,450	24,725
TX	270.0	320.0	370.0	265.0	315.0	345.0	2,600	2,610	2,610	689,000	822,150	900,450
VA	77.0	76.0	76.0	76.0	75.0	75.0	2,885	2,550	2,800	219,260	191,250	210,000
US	1,401.5	1,434.0	1,511.0	1,380.0	1,413.8	1,465.5	2,653	2,503	2,683	3,661,205	3,539,380	3,931,275

¹ Preliminary. ² Estimates comprised of quota and non-quota peanuts.

NASS, Crops Branch, (202) 720-2127.

Table 3-22.—Peanuts: Marketing year average price, and value of production, by States, crop of 1996, 1997, and 1998

State	Marketing year average price per pound			Value of production		
	1996	1997	1998 ¹	1996	1997	1998 ¹
	<i>Dollars</i>	<i>Dollars</i>	<i>Dollars</i>	<i>1,000 dollars</i>	<i>1,000 dollars</i>	<i>1,000 dollars</i>
AL	0.278	0.293	0.277	125,046	109,140	114,013
FL	0.281	0.280	0.247	66,361	63,857	54,340
GA	0.297	0.303	0.266	425,830	404,150	408,842
NM	0.305	0.300	0.235	11,575	14,013	12,925
NC	0.275	0.277	0.242	101,063	91,310	96,800
OK	0.300	0.293	0.309	58,563	54,146	53,303
SC	0.245	0.287	0.286	7,975	8,739	7,071
TX	0.248	0.243	0.232	170,872	199,782	208,904
VA	0.285	0.301	0.249	62,489	57,566	52,290
US	0.281	0.283	0.257	1,029,774	1,002,703	1,008,488

¹ Preliminary.
NASS, Crops Branch, (202) 720-2127.

Table 3-23.—Peanuts, farmers' stock: Price-support operations, United States, 1989-98

Marketing year beginning August 1	Price support level per pound		Put under support ^{3,4}		Owned by CCC at end of marketing year ⁴
	Quota ¹	Additional ²	Quantity	Percentage of production	
	<i>Cents</i>	<i>Cents</i>	<i>Million pounds</i>	<i>Percent</i>	<i>Million pounds</i>
1989/90	30.8	7.5	401	10.0	0
1990/91	31.6	7.5	576	16.0	0
1991/92	32.1	7.5	1,070	21.7	0
1992/93	33.8	6.6	436	10.2	0
1993/94	33.8	6.6	324	9.6	0
1994/95	33.9	6.6	820	19.3	0
1995/96	33.9	6.6	818	24.0	0
1996/97	30.5	6.6	320	8.7	0
1997/98	30.5	6.6	417	11.8	0
1998/99	30.5	8.8

¹ Quota peanuts are those peanuts grown within the farm poundage quota. ² Additional peanuts are those peanuts grown in excess of the quota. ³ Includes loans made and direct purchases. ⁴ Includes shelled peanuts converted to farmers' stock basis.

FSA, Tobacco and Peanuts Division, (202) 720-5291.

Table 3-24.—Peanuts: Simple average of monthly f.o.b. price per pound of cleaned and shelled peanuts by approximate crop years, 1988-97¹

Classification	1988	1989	1990	1991	1992	1993	1994	1995	1996	1997
Southeastern area: Georgia, Alabama, and Florida: Shelled:	<i>Cents</i>	<i>Cents</i>	<i>Cents</i>	<i>Cents</i>	<i>Cents</i>	<i>Cents</i>	<i>Cents</i>	<i>Cents</i>	<i>Cents</i>	<i>Cents</i>
Runner Jumbo	63 ⁷ / ₈	60	57 ¹ / ₄	102 ³ / ₈	68 ³ / ₄	63 ⁷ / ₈	68 ¹ / ₂	67 ¹ / ₂	60 ³ / ₄	62
Runner Medium	60 ¹ / ₂	56 ¹ / ₂	55 ³ / ₄	96 ¹ / ₄	64 ³ / ₄	60 ¹ / ₄	62 ¹ / ₂	66	59 ¹ / ₂	60 ³ / ₈
Runner U.S. Splits	52 ¹ / ₄	55 ⁷ / ₈	55	111 ⁵ / ₈	63 ³ / ₄	59 ¹ / ₂	62 ³ / ₄	65 ¹ / ₂	57	57 ³ / ₄
Virginia-North Carolina: Clean unshelled Virginias:										
Fancy	60 ³ / ₄	46 ¹ / ₂	45 ³ / ₄	69 ⁵ / ₈	47 ³ / ₄	50 ³ / ₄	72 ³ / ₄	57 ¹ / ₄	49 ³ / ₄	54 ¹ / ₂
Shelled Virginias:										
Extra large	83 ³ / ₄	63 ³ / ₈	62 ¹ / ₂	95	68 ¹ / ₂	74 ¹ / ₄	77 ¹ / ₂	68 ¹ / ₂	66 ¹ / ₂	69 ¹ / ₂
Medium	65	58 ⁵ / ₈	60 ¹ / ₂	98 ⁵ / ₈	64 ⁵ / ₈	61 ¹ / ₄	75 ¹ / ₂	67 ¹ / ₂	60 ¹ / ₄	64 ⁵ / ₈
No. 2 with 70% splits	46	51 ⁷ / ₈	56 ¹ / ₂	91 ³ / ₄	59 ⁵ / ₈	59 ¹ / ₄	61 ³ / ₄	60 ¹ / ₂	55 ¹ / ₂	56 ³ / ₈
Southwestern area: Texas and Oklahoma: Shelled:										
Spanish No. 1	57 ³ / ₄	59 ³ / ₈	56 ¹ / ₂	103 ¹ / ₄	64 ⁵ / ₈	61 ⁵ / ₈	62 ⁷ / ₈	65 ¹ / ₂	60 ¹ / ₄	60 ³ / ₈
Spanish U.S. Splits	51 ⁵ / ₈	56 ¹ / ₂	55 ⁵ / ₈	108 ⁷ / ₈	63 ¹ / ₂	61 ¹ / ₂	64 ⁷ / ₈	66 ¹ / ₄	58	58 ¹ / ₄
New Mexico: Handpicked unshelled Valencias ² ...	NA	NA	NA	NA	55 ¹ / ₂	58	65	61 ¹ / ₄	62 ¹ / ₂	65 ⁷ / ₈

¹ Crop year begins about Oct. 1 in the Virginia-North Carolina area; in August, in the Southeastern and the Southwestern States. Prices are for shipment within 6 months. ² No U.S. grade standards apply to Valencia peanuts. NA not available.

AMS, Fruit and Vegetable Division, Market News Branch (912) 228-1208.

Table 3-25.—Peanuts: ¹ Area, yield, and production in specified countries and the world, 1995–96/1997–98

Continent and country	Area ²			Yield per hectare			Production		
	1995/ 96	1996/ 97	1997/ 98 ³	1995/ 96	1996/ 97	1997/ 98 ³	1995/ 96	1996/ 97	1997/ 98 ³
	1,000 hec- tares	1,000 hec- tares	1,000 hec- tares	Metric tons	Metric tons	Metric tons	1,000 metric tons	1,000 metric tons	1,000 metric tons
North America and Caribbean:									
Mexico	65	80	80	1.26	1.40	1.50	82	112	120
United States	614	558	571	2.56	2.98	2.81	1,570	1,661	1,604
Total ⁴	680	639	652	2.43	2.78	2.65	1,653	1,774	1,725
South America:									
Argentina	239	275	390	1.93	1.09	1.67	462	300	650
Brazil	80	89	90	1.93	1.55	1.67	154	138	150
Total ⁴	384	423	541	1.80	1.18	1.60	690	501	866
Africa:									
Benin	128	104	105	0.80	0.81	0.76	103	84	80
Burkina	260	250	240	0.82	0.80	0.83	213	200	200
Burundi	12	12	15	0.83	0.83	1.00	10	10	15
Cameroon	350	420	420	0.29	0.41	0.41	100	171	172
Central African Republic	91	97	100	0.95	0.94	1.00	86	91	100
Chad	319	300	315	0.92	0.67	0.79	293	200	250
Gambia, The	78	64	75	0.96	0.72	0.85	75	46	64
Ghana	180	164	160	0.93	0.81	0.84	168	133	135
Guinea	145	136	136	0.91	1.02	0.99	132	139	135
Cote d'Ivoire	140	140	140	1.05	1.07	1.04	147	150	145
Mali	190	168	170	0.87	0.93	0.91	166	157	155
Niger	277	270	270	0.37	0.37	0.37	103	100	100
Nigeria	600	650	700	0.50	0.50	0.50	300	325	350
Senegal	880	920	788	0.94	0.70	0.70	827	646	550
South Africa, Republic of	135	95	59	1.43	1.47	1.64	193	140	97
Sudan	550	550	550	0.67	0.67	0.67	370	370	370
Uganda	192	195	200	0.75	0.64	0.70	144	125	140
Zaire	729	730	730	0.80	0.77	0.77	580	560	560
Zimbabwe	147	207	190	0.54	0.74	0.32	80	153	60
Total ⁴	6,115	6,258	6,160	0.76	0.70	0.69	4,634	4,400	4,277
Asia:									
Burma	497	517	530	1.01	1.10	1.11	501	568	590
China, Peoples Republic of	3,809	3,616	3,722	2.68	2.80	2.59	10,200	10,140	9,648
India	7,800	7,814	8,100	0.95	1.15	0.99	7,400	9,024	8,000
Indonesia	690	630	660	1.53	1.56	1.52	1,055	985	1,000
Pakistan	102	105	105	1.11	1.10	1.10	113	115	115
Taiwan	35	35	35	2.26	2.26	2.14	79	79	75
Thailand	97	102	100	1.52	1.49	1.50	147	152	150
Turkey	29	34	34	2.41	2.35	2.35	70	80	80
Vietnam	260	260	260	1.28	1.31	1.31	334	340	340
Total ⁴	13,397	13,184	13,618	1.49	1.63	1.47	19,973	21,542	20,056
World total ⁴	20,662	20,600	21,069	1.31	1.38	1.29	27,142	28,439	27,142

¹ Peanuts in the shell. Split year includes Northern Hemisphere crop harvested in the late months of the first year shown combined with Southern Hemisphere and certain Northern Hemisphere crops harvested in the early months of the following year. ² Harvested area as far as possible. ³ Preliminary. ⁴ Regional totals include other countries not shown. World total for all countries in USDA data base.

FAS, Production Estimates and Crop Assessment Division, (202) 720-0888. Prepared or estimated on the basis of official statistics of foreign governments, other foreign source materials, reports of U.S. Agricultural Counselors, Attaches, and Foreign Service Officers, results of office research, and related information.

Table 3-26.—Soybeans: Area, yield, production, and value, United States, 1989–98

Year	Soybeans for beans					
	Area planted	Area harvested	Yield per acre	Production	Marketing year average price per bushel received by farmers	Value of production
	<i>1,000 acres</i>	<i>1,000 acres</i>	<i>Bushels</i>	<i>1,000 bushels</i>	<i>Dollars</i>	<i>1,000 dollars</i>
1989	60,820	59,538	32.3	1,923,666	5.69	10,916,145
1990	57,795	56,512	34.1	1,925,947	5.74	11,042,010
1991	59,180	58,011	34.2	1,986,539	5.58	11,091,996
1992	59,180	58,233	37.6	2,190,354	5.56	12,167,564
1993	60,085	57,307	32.6	1,869,718	6.40	11,949,633
1994	61,620	60,809	41.4	2,514,869	5.48	13,756,328
1995	62,495	61,544	35.3	2,174,254	6.72	14,616,758
1996	64,195	63,349	37.6	2,380,274	7.35	17,439,971
1997	70,005	69,110	38.9	2,688,750	6.47	17,372,628
1998	72,375	70,811	38.9	2,756,794	5.35	14,659,646

NASS, Crops Branch, (202) 720-2127.

Table 3-27.—Soybeans: Stocks on and off farms, United States, 1989–98

Year	On farms				Off farms ¹			
	Dec. 1	Mar. 1	June 1 ²	Sep. 1	Dec. 1	Mar. 1	June 1 ²	Sep. 1
	<i>1,000 bushels</i>	<i>1,000 bushels</i>	<i>1,000 bushels</i>	<i>1,000 bushels</i>	<i>1,000 bushels</i>	<i>1,000 bushels</i>	<i>1,000 bushels</i>	<i>1,000 bushels</i>
1989	793,400	535,800	255,300	86,000	817,316	519,705	340,614	153,139
1990	754,000	555,500	336,500	118,400	929,963	634,619	387,022	210,642
1991	810,000	505,000	279,000	105,000	962,732	672,343	416,671	173,437
1992	876,100	576,900	319,800	124,970	959,885	638,667	363,613	167,314
1993	697,400	425,700	195,000	59,080	876,220	595,917	360,260	150,037
1994	985,800	635,300	348,800	105,130	1,116,156	734,898	443,072	229,684
1995	861,500	512,000	234,100	59,523	971,929	678,356	388,701	123,935
1996	935,100	514,000	216,000	43,600	889,984	541,754	283,890	88,233
1997	1,048,000	637,000	318,000	84,300	951,417	565,922	275,654	115,499
1998 ³	1,187,000	NA	NA	NA	999,756	NA	NA	NA

¹ Includes stocks at mills, elevators, warehouses, terminals, and processors. ² Old crop only. ³ Preliminary. NA-not available.

NASS, Crops Branch, (202) 720-2127.

Table 3-28.—Soybeans: Supply and disappearance, United States, 1988–97

Year beginning September	Supply				
	Stocks by position			Production	Total ¹
	Farm	Terminal market, interior mill, elevator, and warehouse	Total		
<i>1,000 bushels</i>	<i>1,000 bushels</i>	<i>1,000 bushels</i>	<i>1,000 bushels</i>	<i>1,000 bushels</i>	
1988	105,050	197,426	302,476	1,548,841	1,854,909
1989	87,320	94,709	182,029	1,923,666	2,108,189
1990	86,000	153,139	239,139	1,925,947	2,168,578
1991	118,400	210,642	329,042	1,986,539	2,319,025
1992	105,000	173,437	278,437	2,190,354	2,470,846
1993	124,970	167,314	292,284	1,869,718	2,168,418
1994	59,080	150,037	209,117	2,514,869	2,729,464
1995	105,130	229,684	334,814	2,174,254	2,513,524
1996	59,523	123,935	183,458	2,380,274	2,572,636
1997 ²	43,600	88,233	131,833	2,688,750	2,825,589

Year beginning September	Disappearance			
	Crushed ³	Seed, feed and residual	Exports	Total
	<i>1,000 bushels</i>	<i>1,000 bushels</i>	<i>1,000 bushels</i>	<i>1,000 bushels</i>
1988	1,057,668	88,711	526,501	1,672,880
1989	1,146,434	99,732	622,886	1,869,050
1990	1,187,287	94,943	557,315	1,839,536
1991	1,253,537	103,106	683,943	2,040,588
1992	1,278,953	130,035	769,573	2,178,562
1993	1,275,648	95,589	589,064	1,959,301
1994	1,405,156	151,368	838,125	2,394,650
1995	1,369,541	109,346	851,179	2,330,066
1996	1,436,961	122,997	881,845	2,440,803
1997 ²	1,596,983	158,447	870,361	2,625,790

¹ Includes imports, beginning with 1988. ² Preliminary. ³ Reported by the U.S. Department of Commerce. ERS, Field Crops Branch, (202)694-5300.

Table 3-29.—Soybeans, soybean meal, and oil: Average price at specified markets, 1988–97

Year ¹	Soybeans per bushel: No. 1 Yellow Chicago	Soybean oil per pound crude, tanks, f.o.b. Decatur	Soybean meal per short ton: 48 percent protein Decatur	Year ¹	Soybeans per bushel: No. 1 Yellow Chicago	Soybean oil per pound crude, tanks, f.o.b. Decatur	Soybean meal per short ton: 48 percent protein Decatur
	<i>Dollars</i>	<i>Cents</i>	<i>Dollars</i>		<i>Dollars</i>	<i>Cents</i>	<i>Dollars</i>
1988	7.35	20.95	252.40	1993	6.52	27.00	192.86
1989	5.79	22.18	186.48	1994	5.65	27.71	162.60
1990	5.73	20.80	181.38	1995	7.08	24.76	236.00
1991	5.69	18.94	189.21	1996	6.94	21.60	270.90
1992	5.89	21.40	193.75	1997	6.99	25.08	185.54

¹ Year beginning September for soybeans and October for oil and meal. ERS, Field Crops Branch, (202) 694-5300.

Table 3-30.—Soybeans: Area, yield, and production, by States, 1996–98

State	Area planted			Soybeans for beans								
	1996	1997	1998 ¹	Area harvested			Yield per harvested acre			Production		
				1996	1997	1998 ¹	1996	1997	1998 ¹	1996	1997	1998 ¹
	1,000 acres	1,000 acres	1,000 acres	1,000 acres	1,000 acres	1,000 acres	Bush-els	Bush-els	Bush-els	1,000 bushels	1,000 bushels	1,000 bushels
AL	320	350	340	305	340	320	34.0	25.0	22.0	10,370	8,500	7,040
AR	3,550	3,650	3,550	3,500	3,600	3,400	32.0	30.5	25.0	112,000	109,800	85,000
DE	220	230	220	217	225	216	35.0	29.0	33.0	7,595	6,525	7,128
FL	35	47	35	33	45	30	32.0	25.0	23.0	1,056	1,125	690
GA	400	400	300	390	380	220	26.0	21.0	21.0	10,140	7,980	4,620
IL	9,900	10,000	10,700	9,850	9,950	10,650	40.5	43.0	44.0	398,925	427,850	468,600
IN	5,400	5,350	5,700	5,360	5,300	5,600	38.0	43.5	42.0	203,680	230,550	235,200
IA	9,500	10,500	10,500	9,450	10,400	10,450	44.0	46.0	48.0	415,800	478,400	501,600
KS	2,050	2,400	2,550	2,000	2,350	2,500	37.0	37.0	30.0	74,000	86,950	75,000
KY	1,200	1,240	1,220	1,180	1,220	1,200	38.0	34.5	30.0	44,840	42,090	36,000
LA	1,100	1,400	1,200	1,080	1,350	1,070	33.0	29.0	21.0	35,640	39,150	22,470
MD	490	530	470	480	520	460	37.0	30.0	31.0	17,760	15,600	14,260
MI	1,650	1,870	1,900	1,640	1,860	1,890	28.5	38.5	39.0	46,740	71,610	73,710
MN	6,000	6,600	6,900	5,900	6,550	6,800	38.0	39.0	42.0	224,200	255,450	285,600
MS	1,800	2,100	2,050	1,750	2,070	2,000	31.0	31.0	24.0	54,250	64,170	48,000
MO	4,100	4,900	5,100	4,050	4,850	5,000	37.0	36.0	34.0	149,850	174,600	170,000
NE	3,050	3,600	3,800	3,010	3,550	3,750	45.0	40.5	44.0	135,450	143,775	165,000
NJ	120	133	115	119	130	113	37.0	31.0	28.0	4,403	4,030	3,164
NY ²			100			97			41.0			3,977
NC	1,250	1,400	1,475	1,200	1,330	1,415	29.0	29.0	27.0	34,800	38,570	38,205
ND	850	1,150	1,550	845	1,140	1,525	29.0	29.5	32.0	24,505	33,630	48,800
OH	4,500	4,350	4,400	4,490	4,340	4,390	35.0	44.0	44.0	157,150	190,960	193,160
OK	300	340	470	285	330	340	26.0	30.0	18.0	7,410	9,900	6,120
PA	290	375	400	285	370	395	40.0	37.0	40.0	11,400	13,690	15,800
SC	560	580	540	540	570	500	25.0	22.5	21.0	13,500	12,825	10,500
SD	2,700	3,300	3,450	2,670	3,250	3,420	34.0	35.0	39.0	90,780	113,570	133,380
TN	1,150	1,240	1,250	1,100	1,200	1,210	35.0	34.0	29.0	38,500	40,800	35,090
TX	290	420	440	270	400	270	26.0	28.0	22.0	7,020	11,200	5,940
VA	500	510	500	480	490	480	34.0	23.0	23.0	16,320	11,270	11,040
WI	920	1,040	1,150	870	1,000	1,100	37.0	44.0	47.0	32,190	44,000	51,700
US	64,195	70,005	72,375	63,349	69,110	70,811	37.6	38.9	38.9	2,380,274	2,688,750	2,756,794

¹Preliminary. ²Estimates began with 1998 crop year.
NASS, Crops Branch, (202) 720092127.

Table 3-31.—Soybeans: Crushings, and oil and meal stocks, production, and foreign trade, United States, 1988–97

Year beginning October	Soybeans crushed					Soybean oil			Soybean cake and meal		
	Oct.-Dec.	Jan.-Mar.	Apr.-Jun.	Jul.-Sep.	Total	Stocks Oct. 1	Production	Exports	Stocks Oct. 1	Production	Exports
	1,000 bushels	1,000 bushels	1,000 bushels	1,000 bushels	1,000 bushels	Million pounds	Million pounds	Million pounds	1,000 tons	1,000 tons	1,000 tons
1988	296,196	279,116	252,570	224,028	1,051,910	2,092	11,737	1,661	153	24,943	5,442
1989	304,217	301,797	280,536	278,498	1,165,048	1,715	13,004	1,353	173	27,719	5,319
1990	314,756	297,929	280,071	301,328	1,194,084	1,305	13,408	780	318	28,325	5,469
1991	333,345	319,952	296,757	305,850	1,255,904	1,786	14,345	1,648	285	29,831	6,945
1992	343,196	331,987	312,342	288,639	1,276,164	2,239	13,778	1,419	230	30,364	6,232
1993	342,257	327,307	305,734	307,371	1,282,668	1,555	13,951	1,529	204	30,514	5,356
1994	368,631	371,891	339,189	325,301	1,405,011	1,103	15,613	2,680	150	33,269	6,717
1995	369,123	349,481	325,929	318,490	1,363,023	1,137	15,240	1,992	223	32,527	6,002
1996	398,225	392,509	334,449	320,681	1,445,865	2,015	15,752	2,037	212	34,211	6,994
1997 ¹	438,067	437,108	375,309	359,565	1,610,049	1,520	18,143	3,077	210	38,171	9,330

¹ Preliminary.
ERS, Field Crops Branch, (202) 694-5300. Data from the U.S. Department of Commerce.

Table 3-32.—Soybeans for beans: Marketing year average price and value of production, by States, crop of 1996, 1997, and 1998

State	Marketing year average price per bushel			Value of production		
	1996	1997	1998 ¹	1996	1997	1998 ¹
	<i>Dollars</i>	<i>Dollars</i>	<i>Dollars</i>	<i>1,000 dollars</i>	<i>1,000 dollars</i>	<i>1,000 dollars</i>
AL	7.40	6.65	5.50	76,738	56,525	38,720
AR	7.36	6.88	5.70	824,320	755,424	484,500
DE	7.20	7.00	5.70	54,684	45,675	40,630
FL	7.00	7.00	5.40	7,392	7,875	3,726
GA	6.87	6.68	5.35	69,662	53,306	24,717
IL	7.55	6.56	5.45	3,011,884	2,806,696	2,553,870
IN	7.34	6.59	5.35	1,495,011	1,519,325	1,258,320
IA	7.36	6.33	5.30	3,060,288	3,028,272	2,658,480
KS	7.17	6.42	5.35	530,580	558,219	401,250
KY	7.43	6.76	5.60	333,161	284,528	201,600
LA	7.45	6.98	5.80	265,518	273,267	130,326
MD	7.15	6.90	5.65	126,984	107,640	80,569
MI	7.15	6.47	5.25	334,191	463,317	386,978
MN	7.26	6.20	5.10	1,627,692	1,583,790	1,456,560
MS	7.34	6.90	6.05	398,195	442,773	290,400
MO	7.29	6.39	5.30	1,092,407	1,115,694	901,000
NE	7.19	6.28	5.15	973,886	902,907	849,750
NJ	7.05	6.75	5.40	31,041	27,203	17,086
NY ²			5.30			21,078
NC	7.07	6.68	5.40	246,036	257,648	206,307
ND	7.05	6.10	5.00	172,760	205,143	244,000
OH	7.42	6.49	5.30	1,166,053	1,239,330	1,023,748
OK	6.85	6.40	5.00	50,759	63,360	30,600
PA	6.65	6.80	5.30	75,810	93,092	83,740
SC	7.40	6.55	5.35	99,900	84,004	56,175
SD	7.08	6.11	4.90	642,722	695,013	653,562
TN	7.25	6.89	5.60	279,125	281,112	196,504
TX	7.00	6.33	4.80	49,140	70,896	28,512
VA	6.80	6.20	5.70	110,976	69,874	62,928
WI	7.24	6.38	5.30	233,056	280,720	274,010
US	7.35	6.47	5.35	17,439,971	17,372,628	14,659,646

¹ Preliminary. ² Estimates began in 1998.
 NASS, Crops Branch, (202) 720-2127.

Table 3-33.—Soybeans: Support operations, United States, 1989-98

Marketing year beginning September 1	Loan rate per bushel ¹	Put under loan ²		Acquired by CCC under loan program ³	Owned by CCC at end of marketing year
		Quantity	Percentage of production		
	<i>Dollars</i>	<i>Million bushels</i>	<i>Percent</i>	<i>Million bushels</i>	<i>Million bushels</i>
1989/90	4.53	208.9	10.9	0.0	0.0
1990/91	4.50	241.5	12.5	0.0	0.0
1991/92	5.02	158.8	8.0	1.6	0.0
1992/93	5.02	182.1	8.3	0.0	0.0
1993/94	5.02	87.1	4.7	0.0	0.0
1994/95	4.92	375.0	14.9	0.0	0.5
1995/96	4.92	181.8	8.4	0.0	0.0
1996/97	4.97	195.9	8.2	0.0	0.0
1997/98	5.26	265.4	9.8	0.5	0.0
1998/99	5.26				

¹ The national average loan rate was also known as the price support rate prior to enactment of the Federal Agriculture Improvement and Reform Act of 1996. ² Includes loans made, purchase agreements entered into, and direct purchases. Statutory authority for purchases ceased, beginning with the 1991 crop. ³ Acquisitions through loans and purchases (under agreement and direct) from the crop harvested in the year indicated and not acquisitions during that year.
 FSA, Feed Grains & Oilseeds Analysis Group, (202) 720-4417.

Table 3-34.—Soybeans: Area, yield, and production in specified countries and the world, 1995–96/1997–98¹

Continent and country	Area ²			Yield per hectare			Production		
	1995/96	1996/97	1997/98 ³	1995/96	1996/97	1997/98 ³	1995/96	1996/97	1997/98 ³
	1,000 hectares	1,000 hectares	1,000 hectares	Metric tons	Metric tons	Metric tons	1,000 metric tons	1,000 metric tons	1,000 metric tons
North America:									
Canada	824	860	1,050	2.78	2.52	2.57	2,293	2,165	2,700
Mexico	133	52	119	1.43	1.17	1.47	190	61	175
United States	24,938	25,661	28,160	2.38	2.53	2.61	59,243	64,837	73,552
Total	25,920	26,600	29,361	2.38	2.52	2.61	61,793	67,130	76,514
South America:									
Argentina	5,980	6,200	7,000	2.08	1.81	2.67	12,430	11,200	18,700
Bolivia	445	547	630	2.02	1.83	2.00	900	1,000	1,260
Brazil	10,950	11,800	13,000	2.21	2.27	2.38	24,150	26,800	31,000
Colombia	36	35	30	2.06	2.00	1.67	74	70	50
Ecuador	75	32	12	1.13	1.25	0.92	85	40	11
Paraguay	1,100	1,200	1,300	2.18	2.31	2.15	2,400	2,771	2,800
Peru	1	1	1	2.00	2.00	2.00	2	2	2
Uruguay	8	8	8	1.75	1.75	1.75	14	14	14
Venezuela	5	5	5	2.00	2.00	2.00	10	10	10
Total	18,600	19,828	21,986	2.15	2.11	2.45	40,065	41,907	53,847
European Union:									
Austria	14	13	15	2.21	2.08	2.20	31	27	33
France	100	85	97	2.60	2.71	2.89	260	230	280
Germany	2	2	2	2.50	2.50	2.50	5	5	5
Italy	172	231	338	3.71	3.77	3.68	638	871	1,243
Spain	3	6	4	1.67	1.83	2.25	5	11	9
Total	291	337	456	3.23	3.39	3.44	939	1,144	1,570
Other Western Europe:									
Switzerland	2	2	2	2.50	2.50	2.50	5	5	5
Eastern Europe:									
Bulgaria	15	16	6	1.00	0.63	1.00	15	10	6
Hungary	10	12	13	2.00	2.33	2.31	20	28	30
Romania	73	80	61	1.48	1.44	1.98	108	115	121
Yugoslavia	67	94	84	2.15	2.02	2.38	144	190	200
Total	166	203	165	1.73	1.69	2.17	288	344	358
Africa:									
Egypt	26	15	13	2.46	2.60	2.69	64	39	35
Morocco	3	1	2	1.33	1.00	1.00	4	1	2
Nigeria	620	659	650	0.31	0.32	0.31	192	211	200
South Africa, Republic of	68	87	125	1.18	1.38	1.58	80	120	197
Zambia	25	25	25	1.60	1.16	1.40	40	29	35
Zimbabwe	59	60	64	1.86	1.67	1.58	110	100	101
Total	801	847	879	0.61	0.59	0.65	490	500	570
Asia and the Middle East:									
Burma	60	77	90	0.83	0.83	0.83	50	64	75
China, Peoples Republic of	8,127	7,470	8,346	1.66	1.77	1.76	13,500	13,220	14,728
India	4,817	5,000	5,600	0.93	0.82	0.96	4,476	4,100	5,350
Indonesia	1,280	1,180	1,150	1.19	1.24	1.22	1,517	1,460	1,400
Iran	87	87	87	1.54	1.54	1.54	134	134	134
Japan	69	82	83	1.72	1.80	1.75	119	148	145
Korea, Democratic People's	320	325	325	1.25	1.23	1.08	400	400	350
Korea, Republic of	105	98	100	1.52	1.63	1.56	160	160	156
Pakistan	6	2	2	1.17	1.50	1.50	7	3	3
Philippines	6	6	6	1.50	1.50	1.50	9	9	9
Sri Lanka	2	1	1	1.00	1.00	1.00	2	1	1
Syria	7	6	7	1.86	1.50	1.86	13	9	13
Taiwan	5	5	5	2.00	2.00	2.00	10	10	10
Thailand	284	256	260	1.30	1.41	1.25	368	360	325
Turkey	45	40	40	1.67	1.63	1.50	75	65	60
Vietnam	121	130	130	1.04	1.04	1.04	126	135	135
Total	15,341	14,765	16,232	1.37	1.37	1.41	20,966	20,278	22,894
Oceania:									
Australia	32	39	52	2.28	2.15	1.79	73	84	93
World total	61,698	63,168	69,588	2.03	2.09	2.24	124,978	131,730	156,188

¹ Split year includes Northern Hemisphere crop harvested in the late months of the first year shown combined with Southern Hemisphere and certain Northern Hemisphere crops harvested in the early months of the following year. ² Harvested area as far as possible. ³ Preliminary.

FAS, Production Estimates and Crop Assessment Division, (202) 720-0888. Prepared or estimated on the basis of official statistics of foreign governments, other foreign source materials, reports of U.S. Agricultural Counselors, Attaches, and Foreign Service Officers, results of office research, and related information.

Table 3-35.—Soybeans, soybean oil, and soybean cake and meal: United States exports by country of destination, 1994/95–1996/97¹

Continent and country of destination	Soybeans			Soybean oil ²			Soybean cake and meal		
	1994/95	1995/96	1996/97 ³	1994/95	1995/96	1996/97 ³	1994/95	1995/96	1996/97 ³
	<i>Metric tons</i>	<i>Metric tons</i>	<i>Metric tons</i>	<i>Metric tons</i>	<i>Metric tons</i>	<i>Metric tons</i>	<i>Metric tons</i>	<i>Metric tons</i>	<i>Metric tons</i>
North and Central America, incl. Caribbean:									
Canada	61,266	223,890	132,055	43,912	60,318	25,784	724,790	648,027	730,113
Costa Rica	154,072	142,541	154,557	214	1,018	99	0	5	91
Jamaica	0	0	0	10,012	12,839	15,529	53,188	66,426	73,758
Mexico	2,401,318	2,608,814	3,026,019	46,643	81,901	102,950	340,625	81,012	202,263
Total ⁴	2,721,293	3,074,995	3,398,631	140,319	223,732	225,784	1,716,461	1,395,357	1,666,607
South America:									
Brazil	0	190,698	638,038	0	66	9	0	3,174	0
Colombia	163,778	135,862	106,979	15,236	6,270	28,634	238,907	215,861	311,261
Peru	0	0	22,005	35,999	37,726	49,426	37,833	157	78,221
Venezuela	112,580	302,003	188,915	1,877	517	642	254,512	310,024	468,303
Total ⁴	276,478	645,249	1,521,599	62,971	52,209	91,208	617,550	640,234	1,040,944
Europe:									
Belgium and Luxembourg	586,307	746,664	696,197	0	0	31	0	0	0
Denmark	68,499	61,920	41,453	0	0	0	102,523	189,729	118,436
France	181,966	378,628	350,644	0	27	0	14,746	15,253	259,029
Germany	1,292,152	1,239,883	1,117,899	5,752	6,968	5,788	45,949	52,191	110,048
Greece	146,063	153,183	168,022	0	19	0	13,539	28,609	22,835
Italy	438,861	485,977	154,141	0	0	4,300	94,504	184,433	341,129
Netherlands	3,395,161	2,762,290	2,671,542	4,772	2,584	3,182	437,766	430,817	305,106
Norway	239,479	0	0	0	0	0	3	0	144
Spain	919,849	1,338,822	1,616,999	0	0	5,000	46,265	169,684	474,432
United Kingdom	337,780	336,916	481,549	41	51	98	37,042	100,924	125,232
Total ⁴	8,098,346	7,891,130	7,770,796	15,112	14,003	20,016	914,822	1,350,619	2,171,636
Former Soviet Union: ⁵									
Russia	29,797	0	0	6,739	751	1,292	5,010	282	8,113
Ukraine	0	0	16	1,014	1,194	753	114,794	32,780	0
Total ⁴	29,797	16,506	16	13,201	8,027	10,924	232,306	36,061	27,604
Africa:									
Egypt	83,338	75,814	63,324	10	1,899	20,696	46,813	164,861	145,103
Morocco	39,235	58,139	62,996	0	46,682	30,493	47	48,899	27,793
Total ⁴	147,377	166,697	144,263	35,690	89,551	94,675	248,869	508,673	551,901
Asia:									
China	490,008	1,559,138	1,463,147	124,757	338,970	496,306	90,001	566,181	739,048
India	0	0	0	20,841	26,675	38,610	63	0	0
Israel	467,173	516,519	382,795	369	37	2,258	104,076	15,418	5,305
Japan	3,860,730	3,621,249	3,566,497	763	1,955	2,209	204,759	258,823	217,492
Korea, Rep. of	1,386,607	1,511,322	1,065,681	8,639	29,041	43,614	196	4,025	289,876
Philippines	136,625	138,912	130,261	46	79	22,018	433,255	479,163	681,145
Taiwan	2,740,558	2,029,874	1,563,531	17	67	7,777	179	180	674
Total ⁴	10,750,235	11,324,122	9,904,914	177,047	535,998	942,472	1,482,664	2,223,716	2,839,591
Oceania:									
Australia	66,752	68,209	36,299	0	0	4,595	156,800	132,674	108,198
Total ⁴	67,027	68,209	36,299	5,537	350	10,643	225,566	181,726	160,797
Grand Total ^{6,7}	23,165,299	23,999,884	23,687,345	449,876	923,871	1,395,722	5,445,194	6,345,143	8,464,078

¹For soybeans, year begins September 1; for soybean oil and cake and meal, year begins October 1. ²Crude and refined oil (includes shipments under P.L. 480). ³Preliminary. ⁴Includes quantities exported to countries not shown. ⁵Former Soviet Union; includes all 15 Republics of the USSR. ⁶May not add due to rounding. ⁷Includes quantities transhipped via Canada to unidentified countries.

FAS, Cotton, Oilseeds, Tobacco and Seeds Division, (202) 720-5710. Compiled from reports of the U.S. Department of Commerce.

Table 3-36.—Sunflower: Area, yield, production, and value, United States, 1989–98¹

Year	Area planted	Area harvested	Yield per harvested acre	Production	Price per cwt.	Value of production
	<i>1,000 acres</i>	<i>1,000 acres</i>	<i>Pounds</i>	<i>1,000 pounds</i>	<i>Dollars</i>	<i>1,000 dollars</i>
1989	1,840	1,786	985	1,759,760	10.60	190,452
1990	1,905	1,851	1,229	2,274,405	10.80	245,754
1991	2,746	2,673	1,352	3,613,030	8.69	316,847
1992	2,187	2,043	1,255	2,564,985	9.74	250,748
1993	2,757	2,486	1,035	2,572,063	12.90	326,435
1994	3,567	3,430	1,410	4,835,825	10.70	512,791
1995	3,478	3,368	1,190	4,009,332	11.50	457,575
1996	2,536	2,479	1,436	3,559,343	11.70	414,842
1997	2,888	2,792	1,317	3,676,952	11.60	426,766
1998	3,553	3,476	1,509	5,246,701	10.20	524,654

¹ Prior to 1991 estimates included KS, MN, ND, and SD. Beginning in 1991 estimates include all States except AK and HI. NASS, Crops Branch, (202) 720-2127.

Table 3-37.—Sunflower, Oil Varieties: Area, yield, production, and value, United States, 1989–98¹

Year	Area planted	Area harvested	Yield per harvested acre	Production	Price per cwt.	Value of production
	<i>1,000 acres</i>	<i>1,000 acres</i>	<i>Pounds</i>	<i>1,000 pounds</i>	<i>Dollars</i>	<i>1,000 dollars</i>
1989	1,411	1,373	988	1,356,300	9.72	131,924
1990	1,390	1,343	1,205	1,618,450	10.00	162,468
1991	2,294	2,232	1,357	3,027,750	8.22	251,819
1992	1,899	1,790	1,249	2,236,000	9.31	209,586
1993	2,297	2,074	1,042	2,160,268	12.30	264,585
1994	3,041	2,943	1,435	4,223,475	10.10	426,881
1995	2,911	2,829	1,201	3,398,437	10.90	371,969
1996	1,967	1,934	1,470	2,843,763	10.80	309,057
1997	2,284	2,212	1,350	2,985,700	11.00	329,858
1998	2,937	2,880	1,548	4,459,054	9.35	420,140

¹ Prior to 1991 estimates included KS, MN, ND, and SD. Beginning in 1991 estimates include all States except AK and HI. NASS, Corps Branch, (202) 720-2127.

Table 3-38.—Sunflower, non-oil varieties: Area, yield, production, and value, United States, 1989–98¹

Year	Area planted	Area harvested	Yield per harvested acre	Production	Price per cwt.	Value of production
	<i>1,000 acres</i>	<i>1,000 acres</i>	<i>Pounds</i>	<i>1,000 pounds</i>	<i>Dollars</i>	<i>1,000 dollars</i>
1989	429	413	977	403,460	14.60	58,528
1990	515	508	1,291	655,955	12.70	83,286
1991	452	441	1,327	585,280	11.10	65,028
1992	288	253	1,300	328,985	13.00	41,162
1993	460	412	1,000	411,795	15.20	61,850
1994	526	487	1,257	612,350	13.80	85,910
1995	567	539	1,133	610,895	14.10	85,606
1996	569	545	1,313	715,580	13.80	105,785
1997	604	580	1,192	691,252	14.30	96,908
1998	616	596	1,322	787,647	13.20	104,514

¹ Prior to 1991 estimates included KS, MN, ND, and SD. Beginning in 1991 estimates include all States except AK and HI. NASS, Crops Branch, (202) 720-2127.

Table 3-39.—Sunflower: Area, yield, production, and value, by States, 1997–98

Variety and State	Area planted		Area harvested		Yield per harvested acre	
	1997	1998	1997	1998 ¹	1997	1998 ¹
	1,000 acres	1,000 acres	1,000 acres	1,000 acres	Pounds	Pounds
Oil:						
CO	50	100	47	92	1,200	1,350
KS	170	160	165	155	1,200	1,570
MN	75	90	72	87	1,100	1,350
NE	25	39	24	38	1,150	1,240
ND	1,150	1,600	1,100	1,580	1,330	1,540
SD	750	900	745	885	1,470	1,640
TX	23	12	22	11	1,000	600
Other States	41	36	37	32	1,199	1,117
US ²	2,284	2,937	2,212	2,880	1,350	1,548
Non-oil:						
CO	35	45	33	43	900	1,150
KS	30	20	28	20	900	1,200
MN	30	40	27	38	1,000	1,250
NE	30	31	29	30	1,080	1,130
ND	320	390	310	380	1,290	1,420
SD	75	40	72	39	1,390	1,430
TX	65	35	63	33	900	700
Other States	19	15	18	13	1,186	1,102
US ²	604	616	580	596	1,192	1,322
Total:						
CO	85	145	80	135	1,076	1,286
KS	200	180	193	175	1,156	1,528
MN	105	130	99	125	1,073	1,320
NE	55	70	53	68	1,112	1,191
ND	1,470	1,990	1,410	1,960	1,321	1,517
SD	825	940	817	924	1,463	1,631
TX	88	47	85	44	926	675
Other States	60	51	55	45	1,195	1,112
US ²	2,888	3,553	2,792	3,476	1,317	1,509

Variety and State	Production		Marketing year average price per cwt.		Value of production	
	1997	1998 ¹	1997	1998 ¹	1997	1998 ¹
	1,000 pounds	1,000 pounds	Dollars	Dollars	1,000 dollars	1,000 dollars
Oil:						
CO	56,400	124,200	10.90	10.70	6,148	13,289
KS	198,000	243,350	10.80	9.30	21,384	22,632
MN	79,200	117,450	11.40	9.95	9,029	11,686
NE	27,600	47,120	10.30	9.50	2,843	4,476
ND	1,463,000	2,433,200	11.10	9.40	162,393	228,721
SD	1,095,150	1,451,400	10.90	9.25	119,371	134,255
TX	22,000	6,600	13.00	13.00	2,860	858
Other States	44,350	35,734	13.10	11.80	5,830	4,223
US ²	2,985,700	4,459,054	11.00	9.35	329,858	420,140
Non-oil:						
CO	29,700	49,450	14.30	14.20	4,247	7,022
KS	25,200	24,000	14.80	14.10	3,730	3,384
MN	27,000	47,500	14.00	12.90	3,780	6,128
NE	31,320	33,900	15.00	13.60	4,698	4,610
ND	399,900	539,600	14.40	13.50	57,586	72,846
SD	100,080	55,770	11.80	9.20	11,809	5,131
TX	56,700	23,100	14.00	15.00	7,938	3,465
Other States	21,352	14,327	14.60	13.50	3,120	1,928
US ²	691,252	787,647	14.30	13.20	96,908	104,514
Total:						
CO	86,100	173,650	12.30	11.80	10,395	20,311
KS	223,200	267,350	12.30	10.60	25,114	26,016
MN	106,200	164,950	12.30	11.30	12,809	17,814
NE	58,920	81,020	12.70	10.80	7,541	9,086
ND	1,862,900	2,972,800	11.80	10.50	219,979	301,567
SD	1,195,230	1,507,170	10.90	9.25	131,180	139,386
TX	78,700	29,700	13.70	14.00	10,798	4,323
Other States	65,702	50,061	13.60	12.30	8,950	6,151
US ²	3,676,952	5,246,701	11.60	10.20	426,766	524,654

¹Preliminary. ²Estimates include all States except AK and HI.
 NASS, Crops Branch, (202) 720-2127.

Table 3-40.—Sunflowerseeds: Area, yield and production in specified countries, 1994/95–1996/97¹

Continent and country	Area ²			Yield per hectare			Production		
	1994/95	1995/96	1996/97 ³	1994/95	1995/96	1996/97 ³	1994/95	1995/96	1996/97 ³
	1,000 hectares	1,000 hectares	1,000 hectares	Metric tons	Metric tons	Metric tons	1,000 metric tons	1,000 metric tons	1,000 metric tons
North America:									
Canada	45	36	50	1.47	1.56	1.30	66	56	65
Mexico	6	6	6	0.83	0.83	0.83	5	5	5
United States	1,363	1,011	1,154	1.33	1.61	1.48	1,819	1,627	1,707
Total	1,414	1,053	1,210	1.34	1.6	1.47	1,890	1,688	1,777
South America:									
Argentina	3,200	2,900	3,100	1.75	1.86	1.74	5,600	5,400	5,400
Brazil	5	5	5	1.20	1.20	1.20	6	6	6
Chile	4	3	3	1.50	2.00	2.00	6	6	6
Colombia	2	2	2	1.50	1.50	1.50	3	3	3
Paraguay	44	40	40	1.57	1.50	1.50	69	60	60
Uruguay	91	91	91	1.23	1.21	1.21	112	110	110
Venezuela	18	17	22	0.83	0.82	0.82	15	14	18
Total	3,364	3,058	3,263	1.73	1.83	1.72	5,811	5,599	5,603
European Union:									
Austria	29	19	20	2.10	2.32	2.20	61	44	44
Germany	975	915	895	1.95	2.19	2.21	1,900	2,000	1,980
France	52	44	34	2.13	2.34	2.50	111	103	85
Greece	15	15	15	2.60	2.60	2.60	39	39	39
Italy	248	263	304	2.00	1.99	1.67	496	523	509
Portugal	94	107	96	0.30	0.36	0.40	28	38	38
Spain	975	990	970	0.59	1.15	1.41	575	1,138	1,367
Total	2,388	2,353	2,334	1.34	1.65	1.74	3,210	3,885	4,062
Eastern Europe:									
Bulgaria	490	450	450	1.33	1.09	1.11	650	490	500
Czech Republic	19	20	21	1.79	1.95	2.24	34	39	47
Hungary	491	475	446	1.49	1.68	1.22	730	800	545
Romania	715	910	778	1.30	1.30	1.10	933	1,180	858
Slovakia	47	53	47	1.72	1.96	2.09	81	104	98
Yugoslavia	189	230	200	1.76	1.87	1.65	333	430	330
Total	1,951	2,138	1,942	1.42	1.42	1.22	2,761	3,043	2,378
Frm. USSR (non-Baltics):									
Russian Federation	4,100	3,894	3,583	1.02	0.71	0.79	4,200	2,765	2,831
Ukraine	2,000	2,107	2,000	1.43	1.01	1.15	2,850	2,123	2,300
Total ⁴	6,558	6,474	6,056	1.13	0.8	0.9	7,380	5,200	5,463
Africa:									
Egypt	29	21	11	2.07	2.19	2.27	60	46	25
Ethiopia	60	60	60	0.37	0.37	0.37	22	22	22
Kenya	15	15	15	1.33	1.33	1.33	20	20	20
Morocco	160	200	200	0.34	0.60	0.60	55	120	120
Mozambique	25	25	25	0.56	0.56	0.56	14	14	14
South Africa, Republic of	608	464	511	1.24	0.97	1.09	755	450	557
Tanzania, United Republic of	83	82	82	0.40	0.39	0.39	33	32	32
Zambia	48	20	35	0.56	0.40	0.51	27	8	18
Zimbabwe	108	62	58	0.47	0.55	0.38	51	34	22
Total	1,141	955	1,003	0.91	0.78	0.83	1,040	749	833
Asia and the Middle East:									
Burma	180	221	240	0.65	0.73	0.75	117	161	180
China, Peoples Republic of	813	690	716	1.56	1.92	1.64	1,270	1,325	1,176
India	2,170	1,995	2,100	0.65	0.66	0.67	1,400	1,315	1,400
Iran	59	59	59	0.85	0.85	0.85	50	50	50
Iraq	14	12	12	0.79	1.25	1.25	11	15	15
Israel	9	10	11	1.89	1.80	1.82	17	18	20
Pakistan	68	86	96	1.26	1.28	1.30	86	110	125
Syria	9	7	7	1.33	1.43	1.43	12	10	10
Turkey	625	550	500	1.20	1.09	1.44	750	600	720
Total	3,947	3,630	3,741	0.94	0.99	0.99	3,713	3,604	3,696
Oceania:									
Australia	73	137	92	1.19	1.21	1.07	87	166	98
World total⁴	20,836	19,798	19,641	1.24	1.21	1.22	25,892	23,934	23,910

¹ Split year includes Northern Hemisphere crop harvested in the late months of the first year shown combined with Southern Hemisphere and certain Northern Hemisphere crops harvested in the early months of the following year. ²Harvested area as far as possible. ³Preliminary. ⁴Regional totals include other countries not shown. World total for all countries in USDA data base.

FAS, Production Estimates and Crop Assessment Division, (202) 720-0888. Prepared or estimated on the basis of official statistics of foreign governments, other foreign source materials, reports of U.S. Agricultural Counselors, Attaches, and Foreign Service Officers, results of office research, and related information.

Table 3-41.—Peppermint oil: Area, yield, production, and value, United States, 1989–98

Year	Area harvested	Yield per harvested acre	Production	Price per pound	Value of production
	<i>1,000 acres</i>	<i>Pounds</i>	<i>1,000 pounds</i>	<i>Dollars</i>	<i>1,000 dollars</i>
1989	100.8	66	6,652	13.10	87,005
1990	101.8	68	6,953	13.90	96,621
1991	113.7	58	6,561	13.30	87,422
1992	111.6	66	7,382	12.80	94,723
1993	98.3	61	6,027	13.30	80,139
1994	108.5	69	7,459	14.60	109,255
1995	135.3	70	9,449	13.80	130,048
1996	132.0	72	9,446	13.60	128,778
1997	135.6	74	9,971	12.90	128,846
1998 ¹	124.0	78	9,727	11.60	112,528

¹ Preliminary.
NASS, Crops Branch (202), 720-2127.

Table 3-42.—Spearment oil: Area, yield, production, and value, United States, 1989–98

Year	Area harvested	Yield per harvested acre	Production	Price per pound	Value of production
	<i>1,000 acres</i>	<i>Pounds</i>	<i>1,000 pounds</i>	<i>Dollars</i>	<i>1,000 dollars</i>
1989	26.4	70	1,846	13.90	25,693
1990	33.7	76	2,565	14.90	38,188
1991	42.4	73	3,108	13.90	43,120
1992	41.1	89	3,640	12.80	46,645
1993	32.5	84	2,722	12.30	33,488
1994	28.4	78	2,213	12.50	27,592
1995	28.8	79	2,274	12.30	27,858
1996	23.1	94	2,167	12.00	26,094
1997	25.5	96	2,441	11.90	29,128
1998 ¹	27.4	109	2,987	10.90	32,648

¹ Preliminary.
NASS, Crops Branch, (202) 720-2127.

Table 3-43.—Mint oil: Production and value, by States, 1996–98

State	Production			Price per pound			Value of production		
	1996	1997	1998 ¹	1996	1997	1998 ¹	1996	1997	1998 ¹
	<i>1,000 pounds</i>	<i>1,000 pounds</i>	<i>1,000 pounds</i>	<i>Dol-lars</i>	<i>Dol-lars</i>	<i>Dol-lars</i>	<i>1,000 dollars</i>	<i>1,000 dollars</i>	<i>1,000 dollars</i>
Peppermint:									
ID	1,936	2,160	1,995	12.80	11.20	10.00	24,781	24,192	19,950
IN	594	1,050	1,104	14.50	13.60	12.70	8,613	14,280	14,021
OR	3,650	3,504	3,318	15.30	15.30	13.70	55,845	53,611	45,457
WA	3,007	2,945	2,910	11.90	11.00	10.00	35,783	32,395	29,100
WI	259	312	400	14.50	14.00	10.00	3,756	4,368	4,000
US	9,446	9,971	9,727	13.60	12.90	11.60	128,778	128,846	112,528
Spearment:									
ID	140	170	206	13.10	12.40	11.20	1,834	2,108	2,307
IN	62	93	110	13.40	12.00	12.00	831	1,116	1,320
MI	27	51	71	12.20	11.00	11.20	329	561	795
OR	139	158	219	13.00	13.00	12.00	1,807	2,054	2,628
WA	1,606	1,782	2,142	11.60	11.60	10.50	18,630	20,671	22,491
WI	193	187	239	13.80	14.00	13.00	2,663	2,618	3,107
US	2,167	2,441	2,987	12.00	11.90	10.90	26,094	29,128	32,648

¹ Preliminary.
NASS, Crops Branch, (202) 720-2127.

Table 3-44.—Olive oil: World production, 1994–96^{1 2}

Continent and country	1994	1995	1996 ³	Continent and country	1994	1995	1996 ³
	<i>1,000 metric tons</i>	<i>1,000 metric tons</i>	<i>1,000 metric tons</i>		<i>1,000 metric tons</i>	<i>1,000 metric tons</i>	<i>1,000 metric tons</i>
Europe:				Syria	80	75	75
France	2	2	2	Turkey	55	200	60
Greece	260	310	320	Total ⁴	180	320	180
Italy	510	390	578	Africa:			
Portugal	43	41	36	Algeria	16	16	16
Spain	296	951	1,060	Morocco	40	45	45
Total ⁴	1,116	1,699	2,001	Tunisia	80	210	100
Middle East:				Libya	5	5	5
Israel	20	20	20	Total ⁴	141	276	166
Jordan	15	15	15	Argentina	23	23	23
Lebanon	8	8	8	World total ⁴	1,444	2,302	2,354

¹Marketing year begins November 1. ²Production excludes residue oil. ³Preliminary. ⁴Includes other countries not listed separately.

FAS, Cotton, Oilseeds, Tobacco and Seeds Division, (202) 720-5710. Prepared or estimated on the basis of official statistics of foreign governments, other foreign source materials, reports of U.S. Agricultural Counselors, AttacheAE1s, and Foreign Service Officers, results of office research, and related information.

Table 3-45.—Margarine, actual weight: Supply and disposition, United States, 1988–97

Year	Supply			Disposition		
	Production	Stocks, Jan. 1	Total supply	Exports	Domestic disappearance	
					Total	Per capita
	<i>Million pounds</i>	<i>Million pounds</i>	<i>Million pounds</i>	<i>Million pounds</i>	<i>Million pounds</i>	<i>Pounds</i>
1988	2,549	63	2,614	8	2,542	10.4
1989	2,531	62	2,594	7	2,525	10.2
1990	2,768	61	2,830	8	2,730	10.9
1991	2,698	92	2,791	9	2,690	10.6
1992	2,818	91	2,910	13	2,821	11.0
1993	2,892	75	2,969	15	2,887	11.1
1994	2,623	66	2,693	21	2,588	9.9
1995	2,490	62	2,557	36	2,421	9.2
1996	2,480	58	2,544	29	2,432	9.2
1997 ¹	2,367	44	2,418	29	2,297	8.6

¹Preliminary.

ERS, Field Crops Branch. (202) 694-5300. Totals and per capita estimates computed from unrounded numbers.

Table 3-46.—Margarine: Selected reported fats and oils used in manufacture, United States, 1988–97

Year	Vegetable oils			Animal fats ¹	Total ²
	Soybean oil	Cottonseed oil	Corn oil		
		<i>Million pounds</i>	<i>Million pounds</i>	<i>Million pounds</i>	<i>Million pounds</i>
1988	1,619	NA	210	35	1,895
1989	1,573	NA	214	32	1,875
1990	1,749	NA	208	35	2,102
1991	1,853	25	196	43	2,160
1992	1,926	24	176	37	2,174
1993	2,013	26	161	31	2,239
1994	1,793	NA	NA	42	2,003
1995	1,684	NA	NA	41	1,847
1996	1,694	NA	77	28	1,816
1997	1,650	NA	61	14	1,733

¹Lard and edible tallow. ²Includes small quantities of nuts, coconut, palm, and sunflower oil. NA-not available.

ERS, Field Crops Branch, (202) 694-5300. Compiled from reports of the U.S. Department of Commerce. Totals computed from unrounded numbers.

Table 3-47.—Shortening: Supply and disposition, United States, 1988–97

Year	Supply			Disposition		
	Factory and warehouse stocks, Jan. 1	Production	Total supply	Exports and shipments	Domestic disappearance	
					Total	Per capita
	Million pounds	Million pounds	Million pounds	Million pounds	Million pounds	Pounds
1988	139	5,328	5,467	52	5,270	21.5
1989	145	5,315	5,460	32	5,309	21.5
1990	119	5,590	5,709	34	5,559	22.2
1991	116	5,724	5,840	43	5,650	22.4
1992	147	5,719	5,866	43	5,722	22.4
1993	101	6,524	6,625	44	6,487	25.1
1994	95	6,334	6,429	46	6,293	24.1
1995	90	5,975	6,065	45	5,914	22.5
1996	106	5,929	6,035	43	5,911	22.3
1997 ¹	81	5,656	5,737	42	5,604	20.9

¹ Preliminary.

ERS, Market and Trade Economics Division, Field Crops Branch, (202) 694–5300. Compiled from reports of the Commerce and Agriculture Departments.

Table 3-48.—Shortening: Fats and oils used in manufacture, United States, 1988–97

Year	Vegetable oils				Animal fats		Total primary and secondary fats and oils ¹
	Cottonseed oil	Soybean oil	Coconut oil	Palm oil	Lard	Edible tallow	
	Million pounds	Million pounds	Million pounds	Million pounds	Million pounds	Million pounds	Million pounds
1988	170	3,562	109	173	265	840	5,377
1989	192	3,509	92	139	295	752	5,338
1990	252	4,004	(²)	(²)	264	637	5,684
1991	260	4,152	(²)	(²)	274	462	5,767
1992	241	4,140	(²)	(²)	310	427	5,761
1993	266	4,951	(²)	(²)	296	404	6,544
1994	216	4,929	(²)	(²)	287	405	6,365
1995	212	4,673	(²)	(²)	325	374	6,031
1996	237	4,690	(²)	(²)	284	320	5,935
1997	257	4,517	(²)	(²)	272	312	5,679

¹ Includes small quantities of corn, peanut, safflower, and sunflower oil. ² Not included to avoid disclosure.

ERS, Market and Trade Economics Division, Field Crops Branch, (202) 694–5300. Compiled from reports of the U.S. Department of Commerce. Totals computed from unrounded numbers.

Table 3-49.—Inedible tallow and grease: Supply and disposition, United States, and price per pound at Chicago, 1988–97

Year	Supply				Disposition			Price of inedible tallow No. 1 at Chicago, per pound
	Stocks Jan. 1	Production	Total	Exports	Factory consumption			
					Total	Use in soap	Use in feed	
	Million pounds	Million pounds	Million pounds	Million pounds	Million pounds	Million pounds	Cents	
1988	407	6,158	6,565	2,807	3,147	461	1,864	16.6
1989	399	5,848	6,247	2,679	3,194	368	1,919	14.4
1990	374	5,217	6,097	2,267	3,061	402	2,000	13.7
1991	357	5,759	6,116	1,936	2,949	392	1,748	13.3
1992	349	5,768	6,117	2,279	3,050	334	1,954	14.4
1993	309	6,621	6,930	2,117	3,018	300	1,995	14.9
1994	320	6,712	7,032	2,167	3,190	301	2,102	17.4
1995	348	6,745	7,093	2,663	3,223	264	2,166	19.2
1996	373	6,376	6,749	1,993	3,289	245	2,253	21.7
1997	262	6,249	6,511	1,685	3,399	245	2,401	20.7

ERS, Market and Trade Economics Division, Field Crops Branch, (202) 694–5300.

Table 3-50.—Fats, oils, and oilseeds (fat or oil equivalent): World production, 1994–95/1997–98

Commodity	World production ¹			
	1994–95	1995–96	1996–97	1997–98 ²
	1,000 metric tons	1,000 metric tons	1,000 metric tons	1,000 metric tons
Edible vegetable oils:				
Cottonseed	3,727	4,151	3,875	3,787
Olive ³	1,773	1,444	2,302	2,354
Peanut	4,232	4,148	4,496	4,205
Rapeseed	10,101	11,369	10,863	11,648
Soybean	20,140	19,836	20,369	23,035
Sunflower	8,214	8,979	8,561	8,248
Total	48,187	49,927	50,466	53,277
Palm oils:				
Coconut	3,408	3,078	3,583	3,466
Palm	14,941	16,213	17,590	16,872
Palm kernel	2,003	2,174	2,314	2,265
Total	20,352	21,465	23,487	22,603
Animal fats:				
Butter (fat content)	5,215	5,123	5,129	5,171
Tallow and grease	8,312	8,184	8,172	7,994
Total	13,527	13,307	13,301	13,165
Marine oils:				
Fish	1,406	1,410	1,189	889
Grand total ⁵	83,472	86,109	88,443	89,934

¹ Split year includes Northern Hemisphere crop harvested in the late months of the first year shown combined with Southern Hemisphere and certain Northern Hemisphere crops harvested in the early months of the following year. ² Preliminary. ³ Excludes olive residue oil. ⁴ FAS no longer maintains linseed oil production data. ⁵ Excludes linseed oil.

FAS, Cotton, Oilseeds, Tobacco and Seeds Division, (202) 720-5710. Prepared or estimated on the basis of official statistics of foreign governments, other foreign source materials, reports of U.S. Agricultural Counselors, Attaches, and Foreign Service Officers, results of office research, and related information.

Table 3-51.—Fats, oils, oilseeds, and oilseed cake and meal: Exports of selected items, United States, 1988–97

Year beginning January	Lard	Inedible animal tallow, greases, and oils ¹	Oilseeds					
			Cottonseed	Flaxseed	Peanuts unshelled	Peanuts shelled	Soybeans	
	<i>Metric tons</i>	<i>Metric tons</i>	<i>Metric tons</i>	<i>Metric tons</i>	<i>Metric tons</i>	<i>Metric tons</i>	<i>Metric tons</i>	<i>Metric tons</i>
1988	57,622	1,343,732	44,085	4,275	37,317	153,273	18,229,355	
1989	50,074	1,307,551	34,554	24,261	50,557	240,334	15,042,853	
1990	39,644	1,121,120	44,855	27,878	58,941	262,763	15,351,220	
1991	54,705	1,137,383	78,872	17,705	67,706	198,442	17,530,932	
1992	61,811	1,362,824	196,408	5,091	63,702	319,677	19,794,760	
1993	51,903	1,279,276	126,449	3,421	56,378	216,254	19,423,490	
1994	62,141	1,344,832	188,321	3,387	33,401	169,364	18,071,789	
1995	56,260	1,620,878	147,600	2,317	44,529	285,851	22,766,738	
1996	45,690	1,192,094	83,024	2,839	29,592	208,521	25,565,576	
1997 ²	41,014	1,032,283	114,804	5,370	41,622	225,757	26,022,851	

Year beginning January	Vegetable oils							Oilseed cake and meal	
	Cocoa butter	Coconut oil	Cottonseed oil ³	Linseed oil	Margarine	Peanut oil	Soybean oil ³	Soybean	Other ⁴
	<i>Metric tons</i>	<i>Metric tons</i>	<i>Metric tons</i>	<i>Metric tons</i>	<i>Metric tons</i>	<i>Metric tons</i>	<i>Metric tons</i>	<i>Metric tons</i>	<i>Metric tons</i>
1988	1,093	30,572	171,045	4,529	3,742	3,345	875,491	6,282,414	192,364
1989	2,026	20,432	209,316	6,767	3,230	6,810	70,447	4,728,411	130,056
1990	4,049	18,218	145,949	3,027	3,142	7,257	536,460	4,820,163	268,308
1991	2,426	21,132	97,034	4,470	4,220	23,403	442,245	5,534,376	652,877
1992	2,821	9,449	123,293	3,942	5,928	64,697	764,845	6,236,001	781,272
1993	4,340	6,363	83,075	3,799	6,978	23,984	691,343	5,533,646	810,046
1994	2,223	8,495	135,650	5,407	9,350	27,028	822,841	4,809,801	562,613
1995	2,972	9,090	137,693	15,451	17,020	47,741	1,037,405	5,889,055	515,185
1996	2,862	3,987	99,998	14,892	13,058	37,300	571,209	5,859,899	195,250
1997 ²	3,886	5,169	110,615	34,732	13,169	8,828	1,015,831	6,994,431	186,943

¹ Includes edible and inedible tallow, choice white grease, wool grease, yellow grease, edible and inedible oleo and oleo stearine, and animal oils, fats and oils, n.e.c. ² Preliminary. ³ Includes shipments under PL480. ⁴ Includes corn meal. FAS, Cotton, Oilseeds, Tobacco and Seeds Division, (202) 720-5710. Compiled from reports of the U.S. Department of Commerce.

Table 3-52.—Oilseeds, oils, and oilseed cake and meal: Imports of selected items, United States, 1988–97

Year beginning January	Oilseeds					
	Castor beans	Copra	Flaxseed	Peanuts unshelled	Peanuts shelled ¹	Poppy seed
	<i>Metric tons</i>	<i>Metric tons</i>	<i>Metric tons</i>	<i>Metric tons</i>	<i>Metric tons</i>	<i>Metric tons</i>
1988	0	536	60,113	308	663	3,776
1989	0	933	109,418	356	577	3,693
1990	42	486	171,664	116	834	4,160
1991	28	816	203,008	0	1,140	3,355
1992	1	291	126,565	48	9,948	4,989
1993	417	396	110,655	0	651	5,162
1994	5	1,515	143,079	2,633	1,296	5,618
1995	0	1,387	186,153	1,628	32,901	6,122
1996	2	1,023	202,313	2,986	38,051	6,243
1997 ²	0	1,170	223,519	3,176	41,272	5,238

Year beginning January	Oilseeds—continued			Vegetable oils			
	Rapeseed	Sesame seed	Soybeans	Cocoa butter	Castor oil	Coconut oil	Linseed oil
	<i>Metric tons</i>	<i>Metric tons</i>	<i>Metric tons</i>	<i>Metric tons</i>	<i>Metric tons</i>	<i>Metric tons</i>	<i>Metric tons</i>
1988	6,851	33,146	59,828	78,286	30,365	444,799	169
1989	77,752	40,514	89,713	64,353	37,874	391,903	4
1990	102,241	42,879	63,583	92,165	31,032	452,224	7
1991	1,075	36,460	121,476	93,169	34,524	390,997	95
1992	1,543	34,993	69,519	99,512	34,017	501,466	351
1993	162,093	36,924	97,360	83,399	42,215	443,496	160
1994	409,500	40,516	179,270	54,547	44,093	441,330	426
1995	200,054	39,356	130,141	57,158	41,417	491,151	1,744
1996	261,348	46,563	86,981	68,762	39,938	423,189	2,699
1997 ²	318,249	42,629	258,602	87,689	41,025	589,192	3,102

Year beginning January	Vegetable oils—continued						Total oilseed cake and meal
	Olive oil	Palm oil	Palm kernel oil	Peanut oil	Rapeseed oil	Tung oil	
	<i>Metric tons</i>	<i>Metric tons</i>	<i>Metric tons</i>	<i>Metric tons</i>	<i>Metric tons</i>	<i>Metric tons</i>	<i>Metric tons</i>
1988	80,417	152,002	208,526	10,857	162,427	6,406	273,708
1989	80,833	112,201	151,282	391	194,557	6,474	333,036
1990	97,273	131,161	154,327	3,368	213,956	4,045	313,220
1991	98,709	113,527	145,715	1,697	307,127	5,645	505,996
1992	114,271	102,211	167,512	495	381,456	4,996	605,734
1993	121,233	129,371	119,073	200	395,310	4,270	692,255
1994	126,024	160,175	141,372	5,281	425,466	5,401	783,438
1995	122,270	101,621	121,949	3,165	430,648	4,427	831,047
1996	112,778	125,383	148,719	1,639	522,183	3,943	999,513
1997 ²	163,469	134,519	161,706	6,648	491,083	6,265	1,071,926

¹ Includes blanched or roasted peanuts. ² Preliminary.

FAS, Cotton, Oilseeds, Tobacco and Seeds Division, (202) 720-5710. Compiled from reports of the U.S. Department of Commerce.

Table 3-53.—Animal tallow, greases, and oils¹: United States exports by region and country of destination 1995–97

Continent and country	1995	1996	1997 ²	Continent and country	1995	1996	1997 ²
	<i>Metric tons</i>	<i>Metric tons</i>	<i>Metric tons</i>		<i>Metric tons</i>	<i>Metric tons</i>	<i>Metric tons</i>
North and Central America:				Former Soviet Union	2,671	1,493	9,509
Canada	69,591	58,961	60,216	North Africa and Middle East:			
Mexico	260,189	272,999	327,031	Algeria	20,464	15,811	28,665
El Salvador	37,686	32,316	36,505	Egypt	22,981	16,951	25,195
Guatemala	30,115	34,494	48,855	Morocco	19,020	12,680	13,960
Honduras	16,999	15,251	23,773	Turkey	129,757	141,149	152,636
Nicaragua	10,819	10,925	8,671	United Arab Emir.	12	169	133
Other countries ..	5,478	6,484	14,637	Other countries ..	3,774	7,077	19,045
Total	430,877	431,430	519,688	Total	196,008	193,836	239,635
Brazil	5,416	298	14,076	Other Africa:			
Colombia	56,549	37,989	49,331	Ghana	2,500	0	2,667
Ecuador	4,238	2,192	3,587	Nigeria	28,085	4,000	6,531
Venezuela	57,776	61,824	49,743	Senegal	5,689	7,000	23,867
Other countries ..	9,191	3,721	68,807	Other countries ..	111	6,009	13,181
Total	133,169	106,024	185,543	Total	36,385	17,009	46,245
European Community:				Asia:			
Italy	39,234	7,913	2,431	Japan	42,898	39,494	40,867
Netherlands	47,643	44,446	44,320	Korea	61,670	33,582	54,999
Spain	64,472	24,168	50,617	Taiwan	7,455	3,632	4,847
Other countries ..	40,116	41,483	29,789	Other countries ..	14,099	13,303	18,575
Total	191,465	118,009	127,157	Total	126,121	90,011	119,287
Other Europe:				Oceania	101	179	109
Poland	0	75	24	Other regions	71,196	61,621	97,763
Romania	1,006	72	1,459	Grand total ³	1,189,000	1,019,798	1,346,445
Other countries ..	0	41	27				
Total	1,006	187	1,509				

¹ Includes inedible and edible tallow and choice white grease; yellow grease; inedible oleo, and oleo stearin; and animal fats, oils, and greases, n.e.c. ² Preliminary. ³ May not add due to rounding.
 FAS, Dairy, Livestock and Poultry Division, (202) 720-8031. Bureau of the Census, U.S. Department of Commerce.

Table 3-54.—Fats and oils: Index numbers of wholesale prices, leading markets, United States, 1991–97 [1982=100]

Year	All fats and oils excluding butter	Seventeen major fats and oils								
		All fats and oils	Classified by origin		Classified by use					
			Animal	Vegetable	Edible		Industrial			
				Domes-tic origin	Butter	Lard	All edible	Soap fats	Drying oils	All in-dustrial
1991	69.3	53.9	53.6	112.9	NA	104.6	58.0	87.5	99.6	86.5
1992	67.9	51.3	50.8	131.1	NA	102.5	53.8	95.0	89.3	91.9
1993	74.5	54.4	50.2	147.3	NA	116.8	57.1	97.9	94.3	94.9
1994	88.9	61.5	53.0	179.3	NA	128.1	65.7	112.9	93.1	107.4
1995	91.9	115.5	59.6	174.4	NA	151.1	66.1	242.8	92.9	124.0
1996	87.8	655.3	68.1	159.3	NA	162.5	67.1	1,348.6	10.8	129.0
1997	90.9	68.7	75.5	158.1	NA	157.1	68.5	155.4	11.0	143.0

NA-not available.

ERS, Market and Trade Economics Division, Field Crops Branch, (202) 694-5300.

Table 3-55.—Fats and oils: Use in products for civilian consumption, total and per capita, United States, 1988–97

Calendar year	Food products ¹													
	Butter (actual weight)		Lard and tallow (direct use) ²		Margarine (actual weight)		Baking and frying fats (shortening)		Salad and cooking oils		Other edible use		All food products (fat content)	
	Total	Per capita	Total	Per capita	Total	Per capita	Total	Per capita	Total	Per capita	Total	Per capita	Total	Per capita
	<i>Million lbs</i>	<i>Lbs</i>	<i>Million lbs</i>	<i>Lbs</i>	<i>Million lbs</i>	<i>Lbs</i>	<i>Million lbs</i>	<i>Lbs</i>	<i>Million lbs</i>	<i>Lbs</i>	<i>Million lbs</i>	<i>Lbs</i>	<i>Million lbs</i>	<i>Lbs</i>
1988	1,102	4.5	630	2.6	2,527	10.3	5,270	21.5	6,448	26.3	318	1.3	15,570	63.5
1989	1,077	4.4	515	2.1	2,512	10.2	5,309	21.5	6,040	24.4	313	1.3	15,049	60.8
1990	1,095	4.4	609	2.4	2,714	10.9	5,559	22.2	6,195	24.8	291	1.2	15,695	62.8
1991	1,100	4.4	794	3.1	2,671	10.6	5,650	22.4	6,743	26.7	321	1.3	16,525	65.4
1992	1,114	4.4	1,036	4.1	2,802	11.0	5,722	22.4	6,946	27.2	367	1.4	17,203	67.4
1993	1,209	4.7	1,007	3.9	2,868	11.1	6,487	25.1	6,927	26.8	451	1.8	18,134	70.2
1994	1,255	4.8	1,230	4.7	2,584	9.9	6,292	24.1	6,826	26.3	426	1.6	17,846	68.6
1995	1,186	4.5	1,301	4.9	2,421	9.2	5,913	22.5	7,066	26.9	434	1.6	17,577	66.9
1996	1,148	4.3	1,398	5.2	2,426	9.2	5,935	22.3	6,934	26.1	361	1.4	17,841	65.8
1997 ³	1,114	4.2	1,264	4.7	2,297	8.6	5,679	20.9	7,689	28.7	297	1.1	18,340	65.6

Calendar year	Industrial products											
	Soap		Fatty acids		Animal feeds		Other industrial products		All industrial products ⁴		All products ⁵	
	Total	Per capita	Total	Per capita	Total	Per capita	Total	Per capita	Total	Per capita	Total	Per capita
	<i>Million pounds</i>	<i>Pounds</i>	<i>Million pounds</i>	<i>Pounds</i>	<i>Million pounds</i>	<i>Pounds</i>	<i>Million pounds</i>	<i>Pounds</i>	<i>Million pounds</i>	<i>Pounds</i>	<i>Million pounds</i>	<i>Pounds</i>
1988	807	3.3	2,181	8.9	2,002	8.2	501	2.0	5,979	24.4	21,448	88.1
1989	749	3.0	2,057	8.3	2,083	8.4	444	1.8	5,848	23.7	20,977	84.9
1990	799	3.2	1,981	7.9	2,203	8.8	296	1.2	5,741	23.0	21,812	86.1
1991	833	3.3	2,235	8.8	1,974	7.8	286	1.1	5,719	22.6	21,313	86.3
1992	739	2.9	2,041	8.0	2,177	8.5	549	2.1	5,904	23.1	22,687	88.8
1993	749	2.9	1,898	7.3	2,200	8.5	589	2.3	5,846	22.6	23,529	91.1
1994	687	3.0	1,959	8.8	2,340	8.7	654	2.9	6,103	25.2	20,392	91.5
1995	594	2.8	1,964	8.6	2,341	8.8	747	2.5	6,101	23.0	29,201	113.1
1996	469	1.8	1,921	7.2	2,430	9.1	782	2.9	6,018	22.7	27,344	103.0
1997 ³	567	2.1	2,341	8.7	2,645	9.9	557	2.1	6,535	24.4	30,985	115.7

¹Domestic disappearance data are computed by ERS. ²Includes edible tallow direct use beginning in 1979. ³Preliminary. ⁴Including paint, varnish, resin, plastic, and lubricants. ⁵Including only fat content of butter and margarine.

ERS, Market and Trade Economics Division, Field Crops Branch, (202) 694-5300.

Table 3-56.—Fats and oils: Wholesale price per pound, 1993–98 ¹

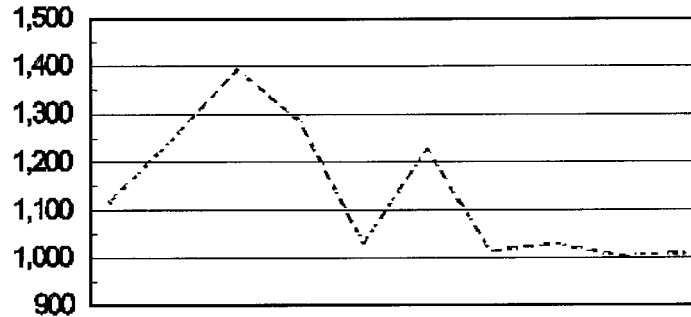
Item and market	1993	1994	1995	1996	1997	1998
	<i>Cents</i>	<i>Cents</i>	<i>Cents</i>	<i>Cents</i>	<i>Cents</i>	<i>Cents</i>
Castor oil, No. 1, Brazilian, tanks, imported, New York	37.2	44.1	45.0	41.70	41.50	41.50
Coconut oil, crude, tanks, f.o.b. New York	25.5	30.4	36.0	42.62	39.40	31.17
Corn oil, crude, tank cars, f.o.b. Decatur	21.8	27.3	26.6	26.50	24.85	30.33
Cottonseed oil, crude, tank cars, f.o.b. Valley	26.0	27.1	26.8	25.90	26.51	31.03
Linseed oil, raw, tank cars, Minneapolis	31.7	32.5	35.0	37.10	36.25	36.00
Palm oil, U.S. ports, refined	21.2	28.1	33.0	26.60	27.25	31.88
Rapeseed oil, refined (denatured), tanks, New York	56.0	53.8	52.0	58.10	88.00	90.00
Safflower oil, tanks, New York	70.0	59.0	59.0	59.00	59.00	59.00
Soybean oil, crude, tank cars, f.o.b. Decatur	22.7	27.9	26.8	23.80	23.27	25.73
Sunflower oil, crude, Minneapolis	26.8	31.1	28.9	24.66	23.45	24.24
Tallow, inedible, number delivered Chicago	14.9	17.4	19.2	20.10	20.75	17.67
Tung oil, imported, drums, f.o.b. New York	118.5	76.1	59.0	63.30	101.50	100.00

¹All prices are calendar year basis.

ERS, Market and Trade Economics Division, Field Crops Branch, (202) 694-5300. Compiled from the Chemical Marketing Reporter, the National Provisioner, the Wall Street Journal, and the U.S. Department of Labor.

Peanuts: Value of Production, 1989-98

Million Dollars



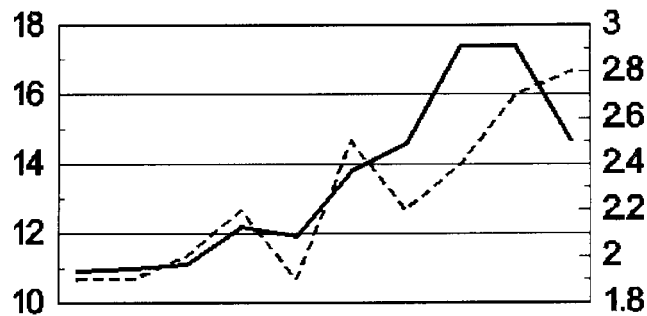
Year	89	90	91	92	93	94	95	96	97	98
Value of Prod.	1,119	1,250	1,392	1,285	1,031	1,229	1,013	1,030	1,003	1,008

NASS Table 3-15

Soybeans: Production & Value of Production 1989-98

Billion Dollars

Million Bu.



Year	89	90	91	92	93	94	95	96	97	98
Production	1.9	1.9	2.0	2.2	1.9	2.5	2.2	2.4	2.7	2.8
Value of Prod.	10.9	11.0	11.1	12.2	11.9	13.8	14.6	17.4	17.4	14.7

NASS Table 3-26