

## U.S. Crop Summary

### **2000 Corn Grain Production Second Largest on Record**

Corn grain production is estimated at 9.97 billion bushels, up 6 percent from 1999, and is the second largest crop behind 1994's record production of 10.1 billion bushels. Production is down 1 percent from the November 1 forecast due to lower than expected yields realized in the heart of the Corn Belt as well as increased abandonment in the central Plains and Southeast. The U.S. grain yield of 137.1 bushels per acre is up 3.3 bushels from 1999 and is the second largest yield on record. Planted area totaled 79.5 million acres, 3 percent above last year. Acres harvested for grain, at 72.7 million acres, are also 3 percent above 1999 and are the most harvested since 1985.

After a warm and dry winter, planting started early and progressed rapidly. Early-summer timely rains fell throughout most of the Corn Belt and maintained adequate moisture for plant growth and development. Cooler-than-normal temperatures during the summer, and some isolated areas of excess moisture, slowed crop development in the Great Lakes region. Serious moisture shortages developed in the western Corn Belt and the Southeast during July and August.

The crop matured early in most areas, following the early planting pattern, and dried down rapidly during September and October. The late season dry weather not only lowered grain weights significantly, but also weakened corn stalks in the heart of the Corn Belt and strong September winds caused widespread lodging, thus reducing yield potential and increasing loss. Harvest finished well ahead of the average pace in early November. However, farmers in the Great Lakes region struggled with a slower harvest as wet, cool weather slowed crop maturity and dry down. Frost damaged only minimal acres in the Great Lakes region and the rest of the Corn Belt harvested their crop frost-free.

### **2000 Soybean Production Highest on Record**

Production in 2000 totaled 2.77 billion bushels, 4 percent above 1999. The 2000 production is the highest on record followed by the 1998 crop of 2.74 billion bushels. The average yield per acre in 2000 is estimated at 38.1 bushels, 1.5 bushels above the 1999 yield. Planted area for the U.S., at 74.5 million acres, is up 1 percent from 1999 and is the largest planted acreage on record. Harvested area

totaled 72.7 million acres, up slightly from 1999. Planting of the 2000 soybean crop started and progressed at a record pace in most regions as mostly favorable weather permitted producers to plant with few disruptions. Planting in the Mid-Atlantic and Southeastern States also advanced ahead for most of the planting season. Overall, the 2000 soybean crop matured well ahead of the 1999 crop and the five-year average. The crop in some areas of Corn Belt was stressed by dry, hot conditions resulting in reduced yields. Soybean harvest began early and progressed ahead of 1999 and the 5-year average with 96 percent of the crop harvested by November 5th.

### **All Wheat Production Lower**

All wheat production for 2000 is estimated at 2.22 billion bushels, down 3 percent from the 1999 level. Harvested area, at 53.0 million acres, was down 1 percent from a year earlier. Yield is estimated at 41.9 bushels per acre, down 0.8 bushels from 1999.

Winter wheat production is estimated at 1.56 billion bushels, down 8 percent from 1999. Harvested acreage totaled 35.0 million, down 1 percent from a year earlier. This was the lowest harvested winter acreage since 1972. Yield in 2000 is estimated at 44.6 bushels per acre, 3.2 bushels below the record set in 1999. Overall, the Nation's 2000 winter wheat crop wintered well. The crop's potential was reduced by a significant freeze in Colorado, Kansas and Nebraska in mid-May, and by severe drought conditions in Texas, Oklahoma and Montana.

Other spring wheat production is estimated at 551 million bushels, up 9 percent from 1999. A 4.1 bushel increase in yield more than offset a 2 percent decline in harvested area.

Durum wheat production totaled 110 million bushels, up 11 percent from 1999. Harvested area was virtually unchanged from the previous year, while yield increased 2.9 bushels per acre.

### **Vegetable Program Changes**

For the 2000 crop year many changes occurred to the National Vegetable Estimation Program. Nine new commodities were added to the program, some States were added, some were dropped, and some States were discontinued for the seasonal forecasts but remained in the program on an annual basis. Data on pages 18 through 20 for 1999 and 2000 are not comparable because of these program changes.

### **2000 Fresh Market Vegetable Production Estimated at 482 Million Hundredweight**

Fresh market vegetable and melon production for the 34 selected crops in 2000 totaled 482 million hundredweight. Value of the 2000 crop was estimated at 9.33 billion dollars, while harvested area covered 2.10 million acres.

Fresh market vegetable and melon production for 25 selected crops in 2000 totaled 455 million hundredweight. Value of the 2000 crop was estimated at 8.72 billion dollars. Harvested area covered 1.92 million acres. The three largest crops in terms of production were head lettuce, onions, and watermelon, which combined to account for 40 percent of the total production. Head lettuce, tomatoes, and onions were the most valuable crops, accounting for 36 percent of the total value when combined.

The nine new crops are collard greens, kale, mustard greens, turnip greens, okra, chile peppers, pumpkins, radishes, and squash. Harvested acres of the new crops are estimated at 172,520 acres. Production is estimated at 27.4 million hundredweight. Total value is estimated at 607 million dollars. Pumpkins and squash lead in production, accounting for 64 percent of production for the nine new crops. Squash and chile peppers are the most valuable of the new crops, accounting for 54 percent of the new crop value.

For all 34 vegetables and melons, California continued to be the leading fresh market State, accounting for 43 percent of the harvested area, 48 percent of production, and 53 percent of the value.

### **Processing Production of 10 Selected Vegetables Estimated at 17.1 Million Tons**

Processing production of 10 selected vegetables in 2000 totaled 17.1 million tons. Area harvested is estimated at 1.45 million acres. Processing crop value is estimated at 1.43 billion dollars. The three largest crops in terms of production are tomatoes, sweet corn, and snap beans, which combine to account for 87 percent of the 10 processing crops. The three most

valuable of the 10 processed vegetables are tomatoes, sweet corn, and cucumbers, accounting for 74 percent of the total value when combined. California leads the nation with 22 percent of the harvested acreage, 62 percent of the production, and 47 percent of the value.

### **Noncitrus Fruit Utilized Production Increases, Nut Production Decreases**

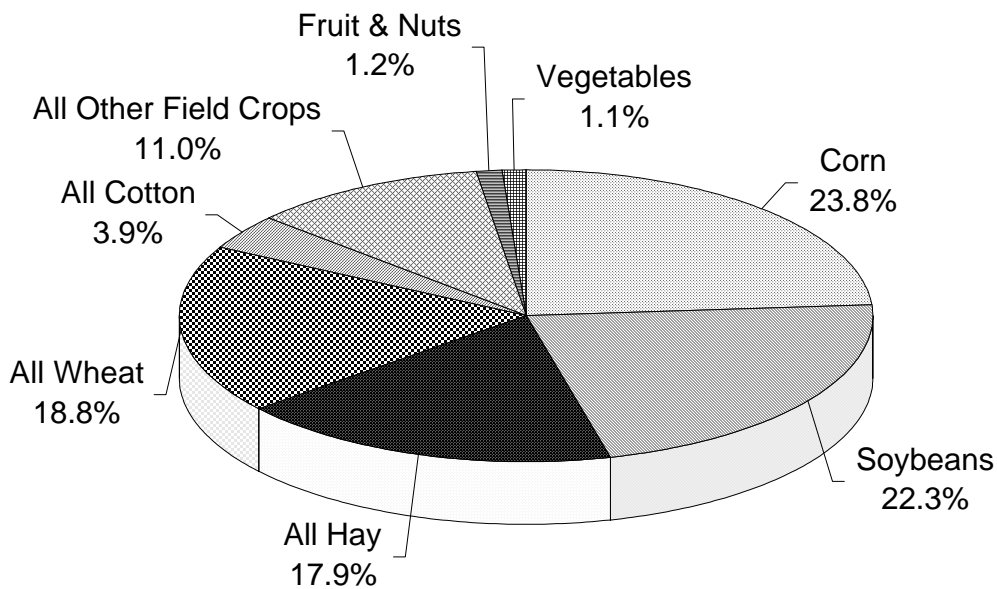
In 2000, the Nation's utilized production of the leading noncitrus fruit crops totaled 18.2 million tons, up 5 percent from 1999's production. Utilized production increased from last year for all crops except apples, apricots, boysenberries, sweet cherries, cranberries, dates, nectarines, olives, and pears.

Value of utilized production for noncitrus fruit crops totaled 8.15 billion dollars, up 1 percent from 1999. The value of apple, grape, and peach production increased by less than 1 percent, 5 percent, and 7 percent, respectively. Strawberries showed a decrease of 8 percent.

The 2000 U.S. tree nut production (in-shell basis) dropped to 1.08 million tons, a 16 percent decrease from a year earlier. A record high pistachio crop of 121,500 tons was realized in 2000, up 98 percent from 1999. All other tree nuts showed the effects of alternate bearing, with lower production than in the previous year. Almond production totaled 572,600 tons, down 15 percent. Hazelnut tonnage for the 2000 crop totaled 24,000 tons, down 40 percent from the previous year. Walnut production totaled 239,000 tons, a 16 percent decrease. Macadamia production, at 24,500 tons, was off 13 percent.

The 2000 U.S. value of utilized tree nut production increased 5 percent to 1.58 billion dollars. Pistachios, with a record crop, recorded a 46 percent increase in value despite a lower price per pound. The almond value increased 24 percent and accounted for 54 percent of the total tree nut value. Hazelnut value fell 35 percent, to 23.1 million dollars. The smaller pecan crop translated into a 31 percent decrease in value even though average prices for improved and native seedling nuts were higher than 1999 prices.

### 2000 Crop Acres as a Percent of Principal Crops United States



Principal field crops included are corn, sorghum, oats, barley, winter wheat, rye, durum wheat, other spring wheat, rice, soybeans, peanuts, sunflower, cotton, dry edible beans, potatoes, canola, proso millet, and sugarbeets. Harvested acres used for all hay, tobacco, and sugarcane. Includes 34 vegetable crops for fresh market and 10 vegetable crops for processing. Bearing acres used for fruits and nuts. Fruit and nuts does not include pecan acreage.

## Value of Crop Production, United States, 1995-2000

Year	Value of Production for Principal Crops <sup>1</sup>			
	Field and Misc. Crops	Fruits and Nuts	Commercial Vegetables	Total Value
	<i>billion dollars</i>	<i>billion dollars</i>	<i>billion dollars</i>	<i>billion dollars</i>
1995	82.176	10.859	9.167	102.203
1996	88.452	11.447	8.354	108.253
1997	83.886	12.836	9.443	106.041
1998	70.425	11.236	9.424	91.085
1999	64.019	12.039	9.290	85.349
2000	66.927	12.366	10.755	90.048

<sup>1</sup> Values on crop year basis. Totals may not add due to rounding. NASS, Crops Branch, (202) 720-2127.

## Field Crops: Top 5 States for Selected Commodities

State Rank	Percent of Total Production, 1996-2000 Average							
	Barley		Corn for Grain		Cotton, All		Hay, All	
	State	Percent	State	Percent	State	Percent	State	Percent
1	North Dakota	29.8	Iowa	18.1	Texas	26.0	Texas	6.3
2	Idaho	16.5	Illinois	15.8	California	13.5	South Dakota	5.5
3	Montana	15.6	Nebraska	12.0	Mississippi	10.2	California	5.4
4	Washington	9.4	Minnesota	9.9	Georgia	10.0	Nebraska	4.8
5	Minnesota	6.1	Indiana	7.8	Arkansas	8.6	Missouri	4.8
	Oats		Peanuts		Potatoes		Rice	
1	North Dakota	12.7	Georgia	38.0	Idaho	29.0	Arkansas	44.6
2	Wisconsin	12.0	Texas	21.8	Washington	19.7	California	20.5
3	Minnesota	11.8	Alabama	10.7	Wisconsin	6.7	Louisiana	14.6
4	South Dakota	10.6	North Carolina	9.5	Colorado	6.0	Texas	8.3
5	Iowa	8.2	Florida	6.3	Oregon	5.8	Mississippi	7.8
	Sorghum for Grain		Soybeans for Beans		Tobacco		Wheat, All	
1	Kansas	44.1	Iowa	17.6	North Carolina	38.1	Kansas	17.1
2	Texas	26.7	Illinois	16.6	Kentucky	28.5	North Dakota	13.0
3	Nebraska	9.7	Minnesota	10.2	Tennessee	7.9	Montana	6.9
4	Missouri	5.3	Indiana	8.6	South Carolina	6.9	Washington	6.7
5	Oklahoma	3.3	Ohio	6.7	Virginia	6.6	Oklahoma	6.3

NASS, Crops Branch, (202) 720-2127.

# Crops

## Field Crops: Acreage, Yield, Production, Price, Value, and Stocks

Crop and Year	Acres		Yield per Acre	Total Production	Average Price	Total Value	Ending Stocks
	Planted	Harvested					
	<i>thousand</i>			<i>thousand</i>	<i>dollars</i>	<i>thousand dollars</i>	<i>thousand</i>
Barley							
1995	6,689	6,279	57.2 bu	359,376 bu	2.89 bu	1,028,756	99,593
1996	7,094	6,707	58.5 bu	392,433 bu	2.74 bu	1,080,940	109,450
1997	6,706	6,198	58.1 bu	359,878 bu	2.38 bu	861,620	119,233
1998	6,337	5,864	60.0 bu	352,125 bu	1.98 bu	686,517	141,653
1999	5,194	4,734	59.2 bu	280,292 bu	2.13 bu	597,038	111,324
2000 <sup>1</sup>	5,844	5,201	61.1 bu	317,865 bu	2.15 bu	632,098	-----
Beans, Dry Edible							
1995	2,066	1,896	1,618 lb	30,689 cwt	20.80 cwt	633,620	N/A
1996	1,839	1,751	1,594 lb	27,912 cwt	23.50 cwt	652,240	N/A
1997	1,870	1,759	1,670 lb	29,370 cwt	19.30 cwt	576,658	N/A
1998	2,014	1,918	1,586 lb	30,418 cwt	19.00 cwt	567,243	N/A
1999	2,023	1,877	1,763 lb	33,085 cwt	16.40 cwt	547,636	N/A
2000	1,756	1,606	1,646 lb	26,440 cwt	15.30 cwt	422,565	N/A
Canola							
1995	446	429	1,278 lb	548,447 lb	11.10 cwt	60,837	88,015
1996	367	347	1,385 lb	480,521 lb	12.90 cwt	62,048	79,510
1997	671	631	1,237 lb	780,710 lb	11.30 cwt	88,235	41,907
1998	1,115	1,076	1,448 lb	1,557,800 lb	10.30 cwt	160,112	168,541
1999	1,076	1,044	1,306 lb	1,363,680 lb	7.82 cwt	106,651	109,417
2000 <sup>1</sup>	1,567	1,509	1,337 lb	2,016,951 lb	6.70 cwt	135,151	-----
Coffee <sup>2</sup>							
1995-96	N/A	5,500	980 lb	5,400 lb	3.00 lb	16,200	N/A
1996-97	N/A	5,400	1,190 lb	6,400 lb	3.25 lb	20,800	N/A
1997-98	N/A	5,800	1,620 lb	9,400 lb	3.00 lb	28,200	N/A
1998-99	N/A	6,100	1,560 lb	9,500 lb	2.60 lb	24,700	N/A
1999-00	N/A	6,400	1,640 lb	10,000 lb	2.00 lb	21,000	N/A
2000-01	N/A	6,800	1,340 lb	9,100 lb	2.35 lb	21,385	N/A
Corn for Grain <sup>3</sup>							
1995	71,479	65,210	113.5 bu	7,400,051 bu	3.24 bu	24,202,234	425,942
1996	79,229	72,644	127.1 bu	9,232,557 bu	2.71 bu	25,149,013	883,161
1997	79,537	72,671	126.7 bu	9,206,832 bu	2.43 bu	22,351,507	1,307,803
1998	80,165	72,589	134.4 bu	9,758,685 bu	1.94 bu	18,922,084	1,786,977
1999	77,386	70,487	133.8 bu	9,430,612 bu	1.82 bu	17,103,991	1,717,549
2000 <sup>4</sup>	79,545	72,732	137.1 bu	9,968,358 bu	1.85 bu	18,621,160	-----
Cotton, All							
1995	16,931	16,007	537 lb	17,900 bale	0.765 lb	6,574,612	N/A
1996	14,653	12,888	705 lb	18,942 bale	0.705 lb	6,408,144	N/A
1997	13,898	13,406	673 lb	18,793 bale	0.662 lb	5,975,585	N/A
1998	13,393	10,684	625 lb	13,918 bale	0.617 lb	4,119,911	N/A
1999	14,874	13,425	607 lb	16,968 bale	0.468 lb	3,809,560	N/A
2000	15,537	13,098	631 lb	17,220 bale	0.578 lb	4,780,703	N/A
Hay, All							
1995	N/A	59,764	2.58 ton	154,239 ton	82.20 ton	11,332,754	20,766
1996	N/A	61,169	2.45 ton	149,779 ton	95.80 ton	12,726,992	17,424
1997	N/A	61,084	2.50 ton	152,536 ton	100.00 ton	13,249,825	21,827
1998	N/A	60,076	2.53 ton	151,780 ton	84.60 ton	11,606,734	24,817
1999	N/A	63,220	2.53 ton	159,077 ton	76.90 ton	11,014,373	28,817
2000 <sup>5</sup>	N/A	59,854	2.54 ton	152,183 ton	83.00 ton	11,179,702	-----

See footnotes at end of table.

--continued

## Field Crops: Acreage, Yield, Production, Price, Value, and Stocks (continued)

Crop and Year	Acres		Yield per Acre	Total Production	Average Price	Total Value	Ending Stocks
	Planted	Harvested					
	<i>thousand</i>			<i>thousand</i>	<i>dollars</i>	<i>thousand dollars</i>	<i>thousand</i>
Hops <sup>2</sup>							
1995	N/A	43,189	1,826 lb	78,852 lb	1.71 lb	135,087	N/A
1996	N/A	44,161	1,698 lb	74,971 lb	1.65 lb	123,530	N/A
1997	N/A	43,302	1,729 lb	74,872 lb	1.60 lb	119,840	N/A
1998	N/A	36,643	1,625 lb	59,548 lb	1.69 lb	100,728	N/A
1999	N/A	34,260	1,881 lb	64,456 lb	1.69 lb	109,099	N/A
2000	N/A	36,120	1,871 lb	67,577 lb	1.87 lb	126,636	N/A
Oats							
1995	6,225	2,952	54.6 bu	161,094 bu	1.67 bu	278,941	66,308
1996	4,638	2,655	57.7 bu	153,245 bu	1.96 bu	313,910	66,676
1997	5,068	2,813	59.5 bu	167,246 bu	1.60 bu	273,284	73,998
1998	4,892	2,755	60.2 bu	165,981 bu	1.10 bu	199,748	81,378
1999	4,673	2,453	59.6 bu	146,193 bu	1.12 bu	175,172	76,031
2000 <sup>1</sup>	4,477	2,423	64.2 bu	149,195 bu	1.05 bu	164,555	-----
Peanuts <sup>6</sup>							
1995	1,537.5	1,517.0	2,282 lb	3,461,475 lb	0.293 lb	1,013,323	66,392
1996	1,401.5	1,380.0	2,653 lb	3,661,205 lb	0.281 lb	1,029,774	22,714
1997	1,434.0	1,413.8	2,503 lb	3,539,380 lb	0.283 lb	1,002,703	27,284
1998	1,521.0	1,467.0	2,702 lb	3,963,440 lb	0.284 lb	1,125,919	158,646
1999	1,534.5	1,436.0	2,667 lb	3,829,490 lb	0.254 lb	971,608	139,210
2000 <sup>4</sup>	1,543.0	1,315.5	2,499 lb	3,287,600 lb	0.257 lb	844,808	-----
Peas, Dry Edible							
1995	210	201	2,372 lb	4,765 cwt	8.70 cwt	45,062	N/A
1996	216	205	1,304 lb	2,671 cwt	11.10 cwt	29,638	N/A
1997	304	282	2,043 lb	5,752 cwt	7.40 cwt	42,658	N/A
1998	323	309	1,920 lb	5,934 cwt	6.90 cwt	40,994	N/A
1999	267	254	1,882 lb	4,773 cwt	5.60 cwt	26,945	N/A
2000	188	179	1,955 lb	3,499 cwt	4.90 cwt	17,012	N/A
Potatoes							
1995	1,400.7	1,376	323 cwt	445,099 cwt	6.75 cwt	2,995,711	N/A
1996	1,454.7	1,426	350 cwt	499,254 cwt	4.91 cwt	2,423,476	N/A
1997	1,383.5	1,354	345 cwt	467,091 cwt	5.64 cwt	2,622,621	N/A
1998	1,416.6	1,388	343 cwt	475,771 cwt	5.56 cwt	2,635,279	N/A
1999	1,376.8	1,332	359 cwt	478,216 cwt	5.77 cwt	2,745,712	N/A
2000	1,387.3	1,352	382 cwt	515,964 cwt	4.95 cwt	2,539,561	N/A
Rice							
1995	3,121	3,093	5,621 lb	173,871 cwt	9.15 cwt	1,587,236	19,971
1996	2,824	2,804	6,120 lb	171,599 cwt	9.96 cwt	1,690,270	21,793
1997	3,125	3,103	5,897 lb	182,992 cwt	9.70 cwt	1,756,136	20,991
1998	3,285	3,257	5,663 lb	184,443 cwt	8.89 cwt	1,654,157	16,626
1999	3,531	3,512	5,866 lb	206,027 cwt	5.93 cwt	1,230,257	21,970
2000 <sup>7</sup>	3,060	3,039	6,281 lb	190,872 cwt	5.75 cwt	1,072,791	-----

See footnotes at end of table.

--continued

# Crops

## Field Crops: Acreage, Yield, Production, Price, Value, and Stocks (continued)

Crop and Year	Acres		Yield per Acre	Total Production	Average Price		Total Value	Ending Stocks
	Planted	Harvested						
	<i>thousand</i>			<i>thousand</i>	<i>dollars</i>		<i>thousand dollars</i>	<i>thousand</i>
Sorghum for Grain <sup>3</sup>								
1995	9,429	8,253	55.6 bu	458,648 bu	3.19 bu		1,395,413	18,371
1996	13,097	11,811	67.3 bu	795,274 bu	2.34 bu		1,986,316	47,461
1997	10,052	9,158	69.2 bu	633,545 bu	2.21 bu		1,408,909	48,903
1998	9,626	7,723	67.3 bu	519,933 bu	1.66 bu		905,468	65,163
1999	9,288	8,544	69.7 bu	595,166 bu	1.57 bu		937,406	65,375
2000 <sup>4</sup>	9,195	7,723	60.9 bu	470,070 bu	1.75 bu		822,598	-----
Soybeans for Beans								
1995	62,495	61,544	35.3 bu	2,174,254 bu	6.72 bu		14,599,145	183,458
1996	64,195	63,349	37.6 bu	2,380,274 bu	7.35 bu		17,439,971	131,833
1997	70,005	69,110	38.9 bu	2,688,750 bu	6.47 bu		17,372,628	199,799
1998	72,025	70,441	38.9 bu	2,741,014 bu	4.93 bu		13,493,891	348,482
1999	73,730	72,446	36.6 bu	2,653,758 bu	4.63 bu		12,205,352	290,162
2000 <sup>4</sup>	74,496	72,718	38.1 bu	2,769,665 bu	4.75 bu		13,073,497	-----
Sugarbeets								
1995	1,444.6	1,420.1	19.8 ton	28,065 ton	38.10 ton		1,070,663	N/A
1996	1,368.4	1,323.3	20.2 ton	26,680 ton	45.40 ton		1,211,001	N/A
1997	1,459.3	1,428.3	20.9 ton	29,886 ton	38.80 ton		1,160,029	N/A
1998	1,497.8	1,450.7	22.4 ton	32,499 ton	36.40 ton		1,181,494	N/A
1999	1,560.6	1,527.3	21.9 ton	33,420 ton	37.20 ton		1,242,895	N/A
2000 <sup>8</sup>	1,564.2	1,378.1	23.6 ton	32,521 ton	-----		-----	N/A
Sugarcane, All								
1995	N/A	932.3	33.0 ton	30,779 ton	29.50 ton		906,441	N/A
1996	N/A	888.9	33.1 ton	29,464 ton	28.30 ton		833,297	N/A
1997	N/A	914.0	34.7 ton	31,709 ton	28.10 ton		890,257	N/A
1998	N/A	947.1	36.6 ton	34,707 ton	27.30 ton		944,562	N/A
1999	N/A	993.3	35.5 ton	35,299 ton	25.60 ton		901,900	N/A
2000 <sup>8</sup>	N/A	1,037.0	35.0 ton	36,346 ton	-----		-----	N/A
Sunflower								
1995	3,478	3,368	1,190 lb	4,009,332 lb	11.50 cwt		457,573	452,953
1996	2,536	2,479	1,436 lb	3,559,343 lb	11.70 cwt		414,842	433,005
1997	2,888	2,792	1,317 lb	3,676,952 lb	11.60 cwt		426,766	202,312
1998	3,568	3,492	1,510 lb	5,273,162 lb	10.60 cwt		536,971	508,224
1999	3,553	3,441	1,262 lb	4,341,862 lb	7.53 cwt		339,993	510,139
2000 <sup>4</sup>	2,792	2,629	1,363 lb	3,584,339 lb	6.45 cwt		241,419	-----
Taro <sup>2</sup>								
1995	N/A	550	N/A	6,800 lb	0.480 lb		3,264	N/A
1996	N/A	530	N/A	5,700 lb	0.490 lb		2,793	N/A
1997	N/A	450	N/A	5,500 lb	0.510 lb		2,805	N/A
1998	N/A	490	N/A	6,000 lb	0.530 lb		3,180	N/A
1999	N/A	500	N/A	6,800 lb	0.530 lb		3,604	N/A
2000	N/A	470	N/A	7,000 lb	0.530 lb		3,710	N/A
Tobacco								
1995	N/A	664	1,914 lb	1,269,910 lb	1.820 lb		2,307,168	N/A
1996	N/A	733	2,072 lb	1,518,704 lb	1.882 lb		2,853,739	N/A
1997	N/A	836	2,137 lb	1,787,399 lb	1.802 lb		3,217,176	N/A
1998	N/A	718	2,062 lb	1,479,867 lb	1.828 lb		2,700,795	N/A
1999	N/A	647	1,997 lb	1,292,692 lb	1.828 lb		2,356,304	N/A
2000	N/A	486	2,264 lb	1,099,884 lb	1.872 lb		2,056,316	N/A

See footnotes at end of table.

--continued

## Field Crops: Acreage, Yield, Production, Price, Value, and Stocks (continued)

Crop and Year	Acres		Yield per Acre	Total Production	Average Price	Total Value	Ending Stocks
	Planted	Harvested					
	<i>thousand</i>			<i>thousand</i>	<i>dollars</i>	<i>thousand dollars</i>	<i>thousand</i>
Wheat, All							
1995	69,031	60,955	35.8 bu	2,182,708 bu	4.55 bu	9,787,766	376,020
1996	75,105	62,819	36.3 bu	2,277,388 bu	4.30 bu	9,782,238	443,607
1997	70,412	62,840	39.5 bu	2,481,466 bu	3.38 bu	8,286,741	722,478
1998	65,821	59,002	43.2 bu	2,547,321 bu	2.65 bu	6,780,623	945,918
1999	62,714	53,823	42.7 bu	2,299,010 bu	2.48 bu	5,593,989	949,748
2000 <sup>1</sup>	62,529	53,028	41.9 bu	2,223,440 bu	2.65 bu	5,970,197	-----
Winter							
1995	48,591	40,987	37.7 bu	1,545,303 bu	4.41 bu	6,720,901	N/A
1996	51,445	39,574	37.1 bu	1,469,618 bu	4.33 bu	6,396,217	N/A
1997	47,985	41,340	44.6 bu	1,845,528 bu	3.23 bu	5,948,655	N/A
1998	46,449	40,126	46.9 bu	1,880,733 bu	2.52 bu	4,740,361	N/A
1999	43,331	35,486	47.8 bu	1,696,580 bu	2.29 bu	3,870,955	N/A
2000	43,348	35,022	44.6 bu	1,562,733 bu	2.55 bu	3,986,686	N/A
Durum							
1995	3,436	3,356	30.5 bu	102,280 bu	5.65 bu	567,541	25,401
1996	3,630	3,556	32.6 bu	116,090 bu	4.67 bu	541,993	30,738
1997	3,310	3,177	27.6 bu	87,783 bu	4.92 bu	422,497	25,828
1998	3,805	3,728	37.0 bu	138,119 bu	3.15 bu	452,860	54,802
1999	4,035	3,569	27.8 bu	99,322 bu	2.73 bu	284,677	49,832
2000 <sup>1</sup>	3,937	3,572	30.7 bu	109,805 bu	2.80 bu	327,132	-----
Other Spring							
1995	17,004	16,612	32.2 bu	535,125 bu	4.59 bu	2,499,324	N/A
1996	20,030	19,689	35.1 bu	691,680 bu	4.20 bu	2,844,028	N/A
1997	19,117	18,323	29.9 bu	548,155 bu	3.53 bu	1,915,589	N/A
1998	15,567	15,148	34.9 bu	528,469 bu	3.00 bu	1,587,402	N/A
1999	15,348	14,768	34.1 bu	503,108 bu	2.88 bu	1,438,357	N/A
2000	15,244	14,434	38.2 bu	550,902 bu	2.90 bu	1,656,379	N/A

<sup>1</sup> Ending stocks will be published June 2001. <sup>2</sup> Actual acres. <sup>3</sup> Planted acres are for all purposes. <sup>4</sup> Ending stocks will be published September 2001. <sup>5</sup> Ending stocks will be published May 2001. <sup>6</sup> Excludes stocks on farm; includes stocks owned by or held for CCC in commercial storage. <sup>7</sup> Ending stocks will be published August 2001. <sup>8</sup> Prices and value will be published July 2001. N/A No estimate made for this item. NASS, Crops Branch, (202) 720-2127.



# Crops

## Field Crops: Records for Acreage, Yield, and Production

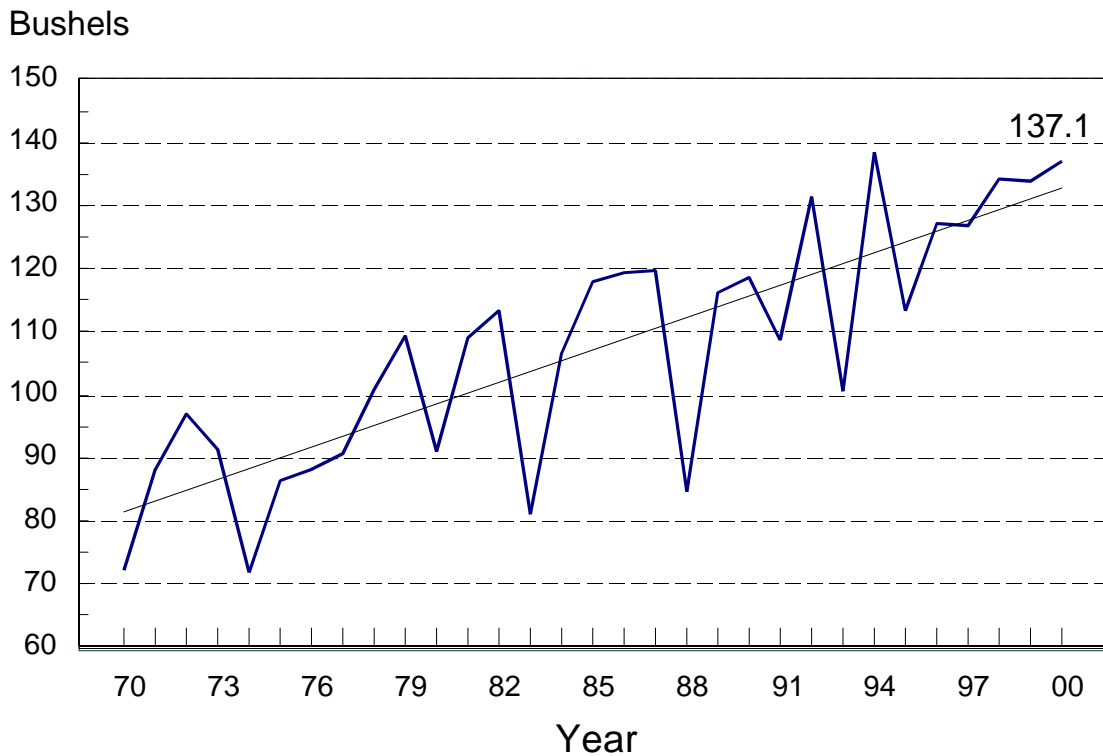
Crop		Acres Harvested		Yield per Acre		Production		Series Began
		Acres	Year	Yield	Year	Production	Year	
		<i>thousand</i>				<i>thousand</i>		
Barley	Low	754	1866	15.9 bu	1933	18,095 bu	1866	1866
	High	16,958	1942	62.5 bu	1992	608,532 bu	1986	
Beans, Dry Edible	Low	764	1909	5.52 cwt	1917	5,772 cwt	1921	1909
	High	2,362	1943	17.64 cwt	1991	33,765 cwt	1991	
Canola	Low	112	1992	1,278 lb	1995	144 lb	1992	1991
	High	1,509	2000	1,448 lb	1998	2,017 lb	2000	
Corn for Grain	Low	30,017	1866	18.2 bu	1901	730,814 bu	1866	1866
	High	110,893	1917	138.6 bu	1994	10,050,520 bu	1994	
Cotton, All	Low	6,973	1868	122 lb	1866	2,097 bale	1866	1866
	High	44,608	1926	708 lb	1994	19,662 bale	1994	
Hay, All	Low	58,815	1994	0.93 ton	1934	60,485 ton	1934	1909
	High	77,639	1944	2.58 ton	1995	155,385 ton	1986	
Hops	Low	18.4	1923	816 lb	1936	19,751 lb	1923	1915
	High	44.7	1915	2,037 lb	1980	79,144 lb	1981	
Oats	Low	2,324	2000	18.5 bu	1934	146,193 bu	1999	1866
	High	45,539	1921	65.4 bu	1992	1,523,851 bu	1945	
Peanuts	Low	464	1910	623 lb	1943	354,605 lb	1909	1909
	High	3,492	1943	2,883 lb	1984	4,926,570 lb	1991	
Peas, Dry Edible	Low	108	1981	6.13 cwt	1977	1,023 cwt	1977	1928
	High	719	1944	23.72 cwt	1995	10,025 cwt	1943	
Potatoes	Low	1,147.8	1980	37.6 cwt	1881	59,798 cwt	1867	1866
	High	3,901.0	1922	382 cwt	2000	515,964 cwt	2000	
Rice	Low	270	1896	867 lb	1896	2,340 cwt	1896	1895
	High	3,792	1981	6,281 lb	2000	206,027 cwt	1999	
Sorghum for Grain	Low	2,396	1934	8.0 bu	1934	19,209 bu	1934	1929
	High	19,682	1957	72.7 bu	1994	1,120,271 bu	1985	
Soybeans for Beans	Low	415	1925	11.0 bu	1924	4,875 bu	1925	1924
	High	72,718	2000	41.4 bu	1994	2,769,665 bu	2000	
Sugarbeets	Low	550.1	1943	9.8 ton	1934	6,547 ton	1943	1909
	High	1,540.4	1969	23.6 ton	2000	33,420 ton	1999	
Sugarcane, All	Low	89.0	1927	6.8 ton	1926	1,088 ton	1926	1909
	High	1,037.0	2000	45.5 ton	1956	36,346 ton	2000	
Sunflower	Low	709	1975	933 lb	1988	786,810 lb	1975	1975
	High	5,410	1979	1,510 lb	1998	7,296,110 lb	1979	
Tobacco	Low	369.0	1868	575 lb	1874	217,340 lb	1874	1866
	High	2,124.2	1930	2,359 lb	1994	2,343,799 lb	1963	
Wheat, All	Low	15,408	1866	10.9 bu	1876	169,708 bu	1866	1866
	High	80,642	1981	43.2 bu	1998	2,785,357 bu	1981	
Winter	Low	26,825	1917	12.5 bu	1933	378,283 bu	1933	1909
	High	58,476	1981	46.9 bu	1999	2,097,057 bu	1981	
Durum	Low	845	1934	3.8 bu	1954	4,982 bu	1954	1919
	High	6,775	1928	39.7 bu	1992	183,040 bu	1981	
Other Spring	Low	7,423	1969	8.4 bu	1931	81,134 bu	1934	1919
	High	19,689	1996	41.8 bu	1992	757,608 bu	1992	

NASS, Crops Branch, (202) 720-2127.

**Field Crops: Objective Yield Survey, Final Counts  
Corn for Grain**

State	Plants per Acre					Ears per Acre				
	1996	1997	1998	1999	2000	1996	1997	1998	1999	2000
Illinois	24,200	24,900	25,400	25,650	25,800	23,600	23,400	24,300	24,850	25,450
Indiana	23,500	23,800	24,300	25,100	25,150	22,700	22,150	23,350	23,900	24,650
Iowa	24,950	25,500	25,600	25,900	26,300	24,250	24,550	24,300	25,300	25,650
Minnesota	26,600	26,600	27,650	26,800	27,150	26,450	25,900	27,550	26,650	27,250
Nebraska	22,700	22,850	23,050	23,100	23,400	22,550	21,900	22,500	22,600	22,700
Ohio	22,750	23,500	25,450	25,000	24,800	22,000	22,300	25,000	24,050	23,950
Wisconsin	24,900	24,800	25,850	26,200	26,200	24,650	24,300	24,850	25,700	25,550

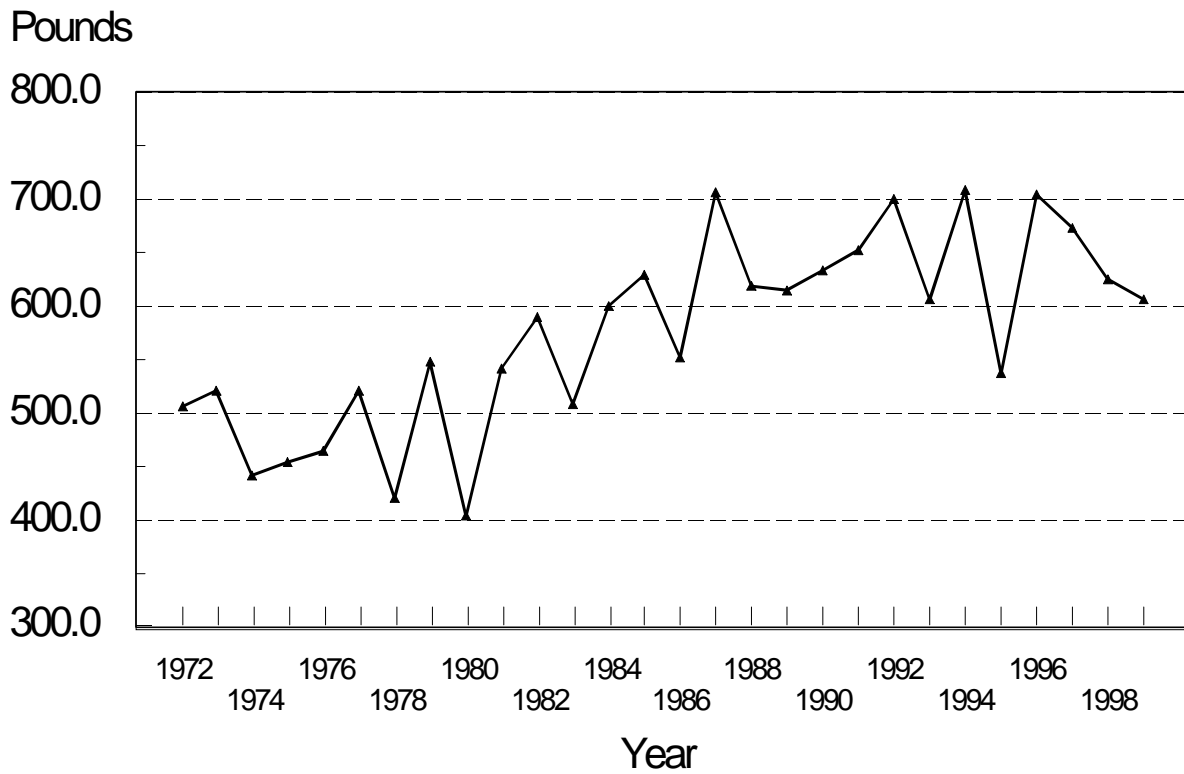
**U.S. Corn Yield, 1970-2000**



**Upland Cotton**

State	Large Bolls (per 40 ft. of row)					Harvest Loss (pounds per acre)				
	1995	1996	1997	1998	1999	1995	1996	1997	1998	1999
Arkansas	689	741	811	640	689	66	64	101	122	71
California	680	744	697	655	776	105	165	103	180	103
Louisiana	615	607	643	600	728	49	52	45	75	93
Mississippi	607	729	833	821	766	78	82	76	84	94
Texas	415	498	458	482	456	36	39	27	37	41

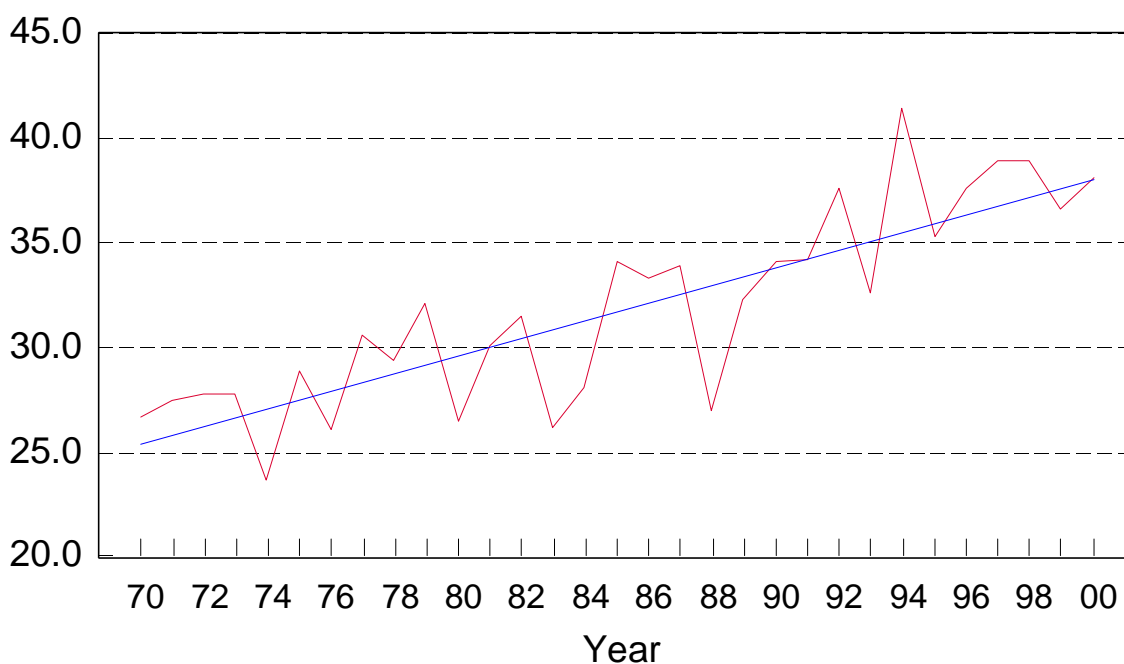
**U.S. All Cotton Yield, 1972-99**



## Soybeans

State	Pods with Beans (per 18 sq. ft.)					State	Pods with Beans (per 18 sq. ft.)				
	1996	1997	1998	1999	2000		1996	1997	1998	1999	2000
Arkansas	1,481	1,956	1,613	1,346	1,835	Minnesota	1,487	1,506	1,442	1,565	1,507
Illinois	1,581	1,708	1,906	1,787	2,021	Missouri	1,655	1,650	1,931	1,525	1,793
Indiana	1,457	1,532	1,709	1,622	1,784	Nebraska	1,514	1,342	1,810	1,872	1,619
Iowa	1,463	1,461	1,748	1,878	1,660	Ohio	1,383	1,467	1,710	1,494	1,697

Bushels/Acre **U.S. Soybean Yield, 1970-2000**



## Wheat

Type of Wheat and State	Heads per Square Foot					Type of Wheat and State	Heads per Square Foot				
	1996	1997	1998	1999	2000		1996	1997	1998	1999	2000
Winter Wheat						Winter Wheat (contd.)					
Colorado	33.5	41.3	39.3	43.4	47.7	Texas	32.3	42.3	39.7	40.7	31.6
Illinois	40.2	56.6	51.2	59.6	55.0	Washington	37.9	32.9	37.7	34.9	40.1
Kansas	35.6	48.1	51.3	49.4	46.5	Durum Wheat					
Missouri	43.3	53.8	43.6	46.9	49.9	North Dakota	24.7	22.8	27.5	22.9	24.2
Montana	28.7	32.3	38.8	36.3	40.3	Other Spring Wheat					
Nebraska	42.6	47.9	56.7	57.9	58.3	Minnesota	41.6	47.8	45.8	49.4	52.5
Ohio	43.6	53.5	55.1	57.3	59.5	Montana	25.1	25.8	29.5	24.5	27.4
Oklahoma	32.5	53.2	40.1	40.1	40.2	North Dakota	36.1	37.7	38.3	37.1	46.6

# Crops

## Fresh Vegetables: Acreage, Yield, Production, Price, and Value 1995-2000, United States <sup>1</sup>

Crop and Year	Acres		Yield per Acre	Total Production	Average Price	Total Value
	Planted	Harvested				
			<i>cwt</i>	<i>thousand cwt</i>	<i>dollars per cwt</i>	<i>thousand dollars</i>
Carrots, Fresh						
1995	102,570	99,220	298	29,518	16.80	494,668
1996	117,520	113,660	292	33,236	13.40	443,863
1997	112,940	111,380	346	38,589	12.90	497,202
1998	114,160	112,100	321	35,935	12.00	430,321
1999	107,960	107,230	302	32,332	16.80	544,234
2000	110,210	108,710	297	32,338	13.50	435,916
Cucumbers, Fresh						
1995	61,880	58,780	170	10,002	16.50	165,280
1996	60,300	56,600	174	9,836	19.00	186,590
1997	59,750	57,450	201	11,571	17.70	204,674
1998	60,480	57,280	197	11,263	20.00	225,587
1999	64,100	59,900	199	11,921	18.20	216,698
2000	58,600	55,300	208	11,520	20.40	234,464
Lettuce <sup>2</sup>						
1995	270,360	268,770	298	80,223	24.90	2,001,249
1996	292,630	291,730	274	79,828	16.50	1,320,890
1997	287,380	285,960	333	95,339	19.00	1,814,313
1998	283,730	282,070	299	84,375	18.40	1,555,395
1999	287,310	284,460	332	94,531	15.10	1,431,881
2000	295,100	294,350	333	98,098	19.00	1,861,511
Snap Beans, Fresh						
1995						
1996	95,200	88,700	50	4,441	36.50	162,260
1997	92,760	82,860	48	3,964	42.00	166,559
1998	90,260	82,660	46	3,805	40.60	154,414
1999	94,700	87,800	56	4,883	48.90	238,858
2000	98,700	90,600	62	5,607	46.50	260,879
Sweet Corn, Fresh	98,700	93,100	63	5,894	42.70	251,399
1995						
1996	242,200	225,200	97	21,792	18.30	397,769
1997	244,100	227,800	102	23,127	16.90	390,737
1998	254,900	236,400	100	23,641	17.70	418,617
1999	255,700	237,400	111	26,311	17.20	452,410
2000	263,600	237,300	109	25,786	17.20	443,276
Tomatoes, Fresh	272,100	246,900	105	25,921	18.30	474,016
1995						
1996	134,610	131,020	260	34,098	25.50	870,427
1997	124,410	120,640	279	33,634	28.20	947,031
1998	119,090	115,190	285	32,777	31.70	1,040,382
1999	124,400	121,710	268	32,628	35.20	1,149,713
2000	136,080	132,880	276	36,735	25.90	951,046
	131,500	128,720	287	36,964	31.40	1,160,130

<sup>1</sup> Data are not comparable for 1999 and 2000 crop years because of programs changes.

<sup>2</sup> Head, Leaf and Romaine.

**Processing Vegetables: Acreage, Yield, Production, Price, and Value**  
**1995-2000 United States <sup>1</sup>**

Crop and Year	Acres		Yield per Acre	Total Production	Average Price	Total Value
	Planted	Harvested				
			<i>tons</i>	<i>tons</i>	<i>dollars per ton</i>	<i>thousand dollars</i>
Carrots, Processing						
1995	29,840	28,300	21.00	594,300	79.00	46,973
1996	27,640	25,720	22.96	590,460	66.90	39,526
1997	23,610	22,360	25.47	569,450	67.40	38,396
1998	24,880	23,780	23.10	549,280	68.30	37,537
1999	23,860	23,060	24.96	575,640	67.30	38,718
2000	21,340	20,230	25.84	522,770	67.10	35,084
Cucumber for Pickles						
1995	122,410	117,090	5.22	611,180	222.00	135,933
1996	110,740	105,200	5.36	563,689	248.00	139,985
1997	107,280	103,370	6.00	620,100	234.00	145,371
1998	105,970	102,870	5.77	593,720	237.00	140,553
1999	109,630	105,300	5.97	628,360	238.00	149,839
2000	108,210	104,710	5.86	613,160	269.00	164,956
Green Peas, Processing						
1995	320,300	304,000	1.62	492,590	267.00	131,762
1996	261,700	249,800	1.67	417,672	285.00	118,910
1997	294,900	271,200	1.77	480,090	288.00	138,496
1998	299,000	273,900	1.77	483,900	282.00	136,584
1999	287,740	271,640	1.70	461,590	275.00	126,925
2000	294,940	277,240	1.91	530,050	248.00	131,701
Snap Beans, Processing						
1995	230,540	216,040	3.27	705,540	173.00	122,379
1996	219,430	207,050	3.79	784,920	178.00	139,755
1997	204,580	195,080	3.74	729,250	176.00	128,032
1998	208,600	198,700	3.68	730,990	172.00	125,373
1999	218,410	212,150	3.67	778,430	173.00	134,501
2000	230,280	218,380	3.82	833,490	171.00	142,502
Sweet Corn, Processing						
1995	531,410	483,910	6.87	3,324,150	75.60	251,156
1996	492,000	474,200	6.95	3,296,330	78.50	258,840
1997	478,900	465,800	7.18	3,342,330	74.90	250,329
1998	486,400	467,300	6.97	3,255,560	73.30	238,748
1999	473,900	466,300	7.07	3,297,390	71.10	234,441
2000	476,100	459,700	6.86	3,155,540	73.40	231,600
Tomatoes, Processing						
1995	359,480	344,380	32.77	11,285,007	63.20	713,479
1996	345,390	339,140	33.64	11,407,301	62.30	711,043
1997	293,720	283,390	35.19	9,973,259	60.70	604,905
1998	302,560	299,960	31.34	9,402,010	65.30	613,954
1999	359,120	350,410	36.63	12,836,020	71.10	912,988
2000	309,300	289,600	37.49	10,858,240	61.10	663,467

<sup>1</sup> Data are not comparable for 1999 and 2000 crop years because of programs changes.

## Crops

### Vegetables for Fresh and Processing: Acreage, Yield, Production, Price, and Value 1995-2000, United States <sup>1</sup>

Crop and Year	Acres		Yield per Acre	Total Production	Average Price	Total Value
	Planted	Harvested				
			<i>cwt</i>	<i>thousand cwt</i>	<i>dollars per cwt</i>	<i>thousand dollars</i>
<b>Asparagus</b>						
1995	76,740	72,340	28	2,024	87.50	177,170
1996	79,160	73,560	27	1,989	78.70	156,623
1997	79,530	74,030	27	2,026	90.00	182,390
1998	77,730	74,430	27	1,979	101.00	199,482
1999	79,590	75,890	29	2,176	107.00	233,170
2000	82,800	77,400	29	2,272	97.40	221,299
<b>Broccoli</b>						
1995	129,600	129,400	122	15,815	28.00	443,304
1996	133,700	133,500	118	15,693	26.50	415,695
1997	130,800	130,800	129	16,880	28.50	481,459
1998	134,300	134,300	129	17,351	29.50	511,681
1999	148,000	148,000	147	21,690	23.90	518,019
2000	135,500	135,300	145	19,620	30.40	597,099
<b>Cauliflower</b>						
1995	53,600	53,350	137	7,315	33.30	243,778
1996	48,400	48,200	153	7,354	32.30	237,342
1997	43,700	43,500	158	6,889	31.60	217,534
1998	44,200	44,200	156	6,897	32.80	226,560
1999	46,600	46,400	155	7,742	29.00	224,725
2000	47,360	47,160	165	7,760	33.40	259,501
<b>Onions</b>						
1995	171,770	166,800	392	65,374	11.10	645,748
1996	175,430	166,210	386	64,106	10.50	604,789
1997	175,070	165,910	414	68,769	12.60	770,011
1998	177,570	171,340	393	67,282	13.80	838,441
1999	183,410	173,400	424	73,562	9.78	635,128
2000	177,380	166,170	431	71,604	11.20	732,283

<sup>1</sup> Data are not comparable for 1999 and 2000 crop years because of programs changes.

**Fruits and Nuts: Non-citrus Fruit Acreage,  
Utilized Production, Price, and Value**

Crop and Year	Bearing Acres	Utilized Production <sup>1</sup>	Average Price <sup>2</sup>	Total Value
		<i>tons</i>	<i>dollars per unit</i>	<i>thousand dollars</i>
Apples				
1995	462,600	5,191,950	0.170	1,767,001
1996	467,550	5,165,000	0.159	1,641,462
1997	467,950	5,127,150	0.154	1,575,403
1998	467,600	5,381,300	0.122	1,316,712
1999	461,300	5,223,300	0.149	1,552,615
2000	451,600	5,167,400	0.150	1,553,536
Apricots				
1995	21,190	60,500	456.00	27,572
1996	21,580	79,290	444.00	35,171
1997	21,400	129,630	332.00	43,072
1998	21,380	108,080	327.00	35,358
1999	20,380	90,500	391.00	35,377
2000	20,380	88,800	356.00	31,579
Bananas				
1995	880	6,500	0.400	5,200
1996	960	6,500	0.400	5,200
1997	950	6,850	0.380	5,206
1998	1,420	10,500	0.350	7,350
1999	1,420	12,250	0.350	8,575
2000	1,550	14,250	0.350	9,975
Blueberries				
1995	38,040	79,500	0.637	101,279
1996	37,750	62,690	0.907	113,780
1997	38,670	83,310	0.831	138,490
1998	38,800	74,100	0.725	107,494
1999	39,330	87,000	0.883	153,715
2000	40,320	90,800	0.972	176,571
Cherries, Sweet				
1995	52,080	152,880	1,260.00	193,068
1996	54,780	151,700	1,470.00	223,022
1997	56,640	223,490	1,250.00	278,511
1998	57,290	208,410	1,090.00	226,236
1999	58,400	227,760	1,090.00	248,493
2000	58,650	214,920	1,330.00	286,774
Cherries, Tart				
1995	44,675	155,600	0.059	18,456
1996	42,550	130,050	0.161	41,747
1997	40,330	141,650	0.159	44,911
1998	40,320	152,800	0.145	44,186
1999	39,900	126,550	0.218	55,505
2000	40,680	140,700	0.187	52,753

See footnotes at end of table.

--continued



# Crops

## Fruits and Nuts: Non-citrus Fruit Acreage, (continued) Utilized Production, Price, and Value

Crop and Year	Bearing Acres	Utilized Production <sup>1</sup>	Average Price <sup>2</sup>	Total Value
		<i>tons</i>	<i>dollars per unit</i>	<i>thousand dollars</i>
Grapes				
1995	782,570	5,912,350	346.00	2,046,737
1996	808,830	5,537,325	429.00	2,376,111
1997	835,270	7,287,365	429.00	3,126,433
1998	856,170	5,816,405	454.00	2,640,470
1999	904,700	6,234,830	469.00	2,926,759
2000	956,450	7,314,630	419.00	3,063,918
Papayas <sup>3</sup>				
1995	2,435	25,400	0.364	18,494
1996	1,835	20,900	0.408	17,054
1997	1,985	19,400	0.489	18,978
1998	2,120	19,950	0.316	12,589
1999	1,940	21,200	0.376	15,929
2000	1,600	26,500	0.327	17,319
Peaches				
1995	164,640	1,089,600	0.184	401,393
1996	164,335	1,021,900	0.191	389,894
1997	157,750	1,254,200	0.177	444,137
1998	160,340	1,162,800	0.192	446,534
1999	156,380	1,216,700	0.190	462,836
2000	155,770	1,259,900	0.196	495,067
Pears				
1995	69,520	947,300	272.00	257,849
1996	68,700	820,250	376.00	308,367
1997	66,880	1,041,930	276.00	287,822
1998	66,180	967,800	291.00	281,611
1999	66,120	1,013,400	294.00	298,009
2000	66,060	957,200	267.00	255,354
Strawberries <sup>3</sup>				
1995	48,080	801,000	50.70	811,634
1996	47,670	812,950	47.30	768,943
1997	44,260	813,900	55.50	903,350
1998	45,230	819,850	61.10	1,001,854
1999	45,560	905,200	61.10	1,105,513
2000	47,750	923,800	54.90	1,013,537

<sup>1</sup> Total production minus production not harvested and production not sold due to economic conditions, expressed in fresh equivalents. <sup>2</sup> Prices for Apples, Bananas, Blueberries, Tart Cherries, Papayas and Peaches are in dollars per pound. Prices for Apricots, Sweet Cherries, grapes and pears are per ton. Prices for Strawberries are per hundredweight. <sup>3</sup> Harvested acres shown. NASS, Crops Branch, (202) 720-2127.

## Fruits and Nuts: Citrus Acreage, Utilized, Production, Price, and Value

Crop and Year <sup>1</sup>	Bearing Acres	Utilized Production	Average Price <sup>2</sup>	Total Value <sup>2</sup>
		<i>tons</i>	<i>dollars/box</i>	<i>thousand dollars</i>
<b>Grapefruit <sup>3</sup></b>				
1994-95	166,060	2,912	4.29	307,525
1995-96	174,270	2,718	4.33	290,152
1996-97	182,000	2,885	4.00	284,749
1997-98	171,700	2,593	4.13	268,598
1998-99	156,500	2,513	5.42	340,692
1999-00	154,000	2,758	6.32	423,438
<b>Lemons</b>				
1994-95	61,000	897	11.16	263,441
1995-96	61,300	992	10.01	261,281
1996-97	61,900	962	12.00	303,476
1997-98	62,700	897	10.21	240,846
1998-99	61,600	747	13.25	260,336
1999-00	61,600	863	14.02	318,162
<b>Oranges</b>				
1994-95	771,170	11,432	6.08	1,624,061
1995-96	808,750	11,426	6.85	1,821,579
1996-97	843,600	12,692	6.16	1,836,662
1997-98	828,000	13,670	6.13	1,965,358
1998-99	830,100	9,824	7.45	1,700,532
1999-00	817,600	13,113	5.76	1,752,909
<b>Tangerines</b>				
1994-95	34,300	287	15.01	100,285
1995-96	38,600	349	13.94	110,573
1996-97	42,500	425	12.47	122,172
1997-98	41,500	360	11.78	96,524
1998-99	41,800	327	15.85	117,537
1999-00	40,600	451	11.05	113,277

<sup>1</sup> The crop year begins with the bloom of the first year shown and ends with the completion of harvest the following year. <sup>2</sup> Equivalent packinghouse-door returns. <sup>3</sup> Excludes economic abandonment in 1995-96 of 127,500 tons of colored seedless; in 1996-97 of 127,500 tons of white seedless, and 127,500 tons of colored seedless; in 1997-98 of 212,500 tons of white seedless, and 42,500 tons of colored seedless. NASS, Crops Branch, (202) 720-2127.

# Crops

## Fruits and Nuts: Nut Acreage, Production, Price, and Value

Crop and Year	Bearing Acres	Utilized Production	Average Price <sup>1</sup>	Total Value
		<i>tons</i>	<i>dollars per unit</i>	<i>thousand dollars</i>
<b>Almonds<sup>2</sup></b>				
1995	418,000	304,276	2.48	880,896
1996	428,000	411,955	2.08	1,018,368
1997	442,000	607,200	1.56	1,160,640
1998	460,000	469,314	1.41	703,590
1999	480,000	671,800	0.86	687,742
2000	500,000	572,600	1.25	852,000
<b>Hazelnuts</b>				
1995	27,980	39,000	913.00	35,614
1996	28,600	19,000	860.00	16,341
1997	29,000	47,000	899.00	42,267
1998	29,530	15,500	964.00	14,942
1999	29,200	40,000	890.00	35,603
2000	28,350	24,000	961.00	23,064
<b>Macadamia Nuts</b>				
1995	19,300	25,500	0.74	37,740
1996	19,200	28,250	0.78	44,070
1997	19,200	29,000	0.75	43,500
1998	19,200	28,750	0.65	37,375
1999	18,900	28,300	0.67	37,855
2000	17,700	24,500	0.61	29,890
<b>Pecans<sup>3</sup></b>				
1995		133,750	1.01	271,377
1996		104,750	0.64	134,355
1997		167,500	0.77	259,220
1998		73,200	1.21	177,452
1999		203,100	0.81	330,398
2000		103,300	1.11	226,975
<b>Pistachios</b>				
1995	60,300	74,000	1.09	161,320
1996	64,300	52,500	1.16	121,800
1997	65,400	90,000	1.13	203,400
1998	68,000	94,000	1.03	193,640
1999	71,000	61,500	1.33	163,590
2000	74,600	121,500	0.98	238,140
<b>Walnuts</b>				
1995	193,000	234,000	1,400.00	327,600
1996	192,000	208,000	1,580.00	328,640
1997	193,000	269,000	1,430.00	384,670
1998	193,000	227,000	1,050.00	238,350
1999	191,000	283,000	886.00	250,738
2000 <sup>4</sup>	193,000	239,000		

<sup>1</sup> Prices for Almonds, Macadamia Nuts, Pecans, and Pistachios are on a per pound basis. Prices for Hazelnuts and Walnuts are on a per ton basis.

<sup>2</sup> Price and value are on shelled basis. <sup>3</sup> Bearing acreage not estimated. <sup>4</sup> Price and value not yet published. NASS, Crops Branch, (202) 720-2127.

## Floriculture Crops: Wholesale Value of Sales

Year	Equivalent Value of Sales at Wholesale, Operations with \$100,000+ in Sales, 36 States							
	Cut Flowers	Potted Flowering Plants <sup>1</sup>	Foliage Plants <sup>1 2</sup>	Bedding/Garden Plants				Cut Culti- vated Greens
				Flats	Pots	Hanging Baskets	Total	
	<i>thousand dollars</i>							
1994	442,297	662,490	489,306	668,120	460,440	151,527	1,280,087	119,247
1995	423,630	681,107	498,969	699,056	493,702	164,209	1,356,967	113,124
1996	412,700	684,340	508,947	730,815	520,823	176,495	1,428,133	118,185
1997	471,569	722,869	499,964	887,306	661,153	197,502	1,746,959	116,184
1998	411,595	736,837	502,501	802,914	862,175	207,521	1,872,610	117,689
1999	425,958	764,983	509,243	901,091	824,145	221,416	1,946,652	127,260

<sup>1</sup> For indoor or patio use. <sup>2</sup> Net value of sales for potted foliage, gross value of sales less cost of plant material purchased from other growers for growing on. NASS, Crops Branch, (202) 720-2127.

Floriculture Crops: Growing Area by Type of Cover <sup>1</sup>

Year	Covered Area						Open Ground
	Greenhouse cover				Shade and Temporary Cover	Total Covered Area	
	Glass	Fiberglass, Rigid Plastics	Film Plastic	Total Greenhouse			
	<i>thousand square feet</i>						<i>acres</i>
1994	76,013	110,378	278,185	464,576	348,530	813,106	27,054
1995	70,199	109,897	308,220	488,316	355,422	843,738	29,727
1996	70,286	102,747	293,675	466,708	374,738	841,446	29,081
1997	74,193	106,346	356,270	536,809	393,462	930,271	35,507
1998	73,795	97,949	385,530	557,274	389,828	947,102	38,507
1999	68,164	93,635	371,184	532,983	392,414	925,397	35,394

<sup>1</sup> For operations with \$10,000+ sales. NASS, Crops Branch, (202) 720-2127.

## Agaricus Mushrooms

Year	Area in Production		Yield per Square Foot	Volume of Sales	Price per Pound	Value of Sales
	Growing Area	Total Fillings				
	<i>thousand square feet</i>		<i>pounds</i>	<i>thousand pounds</i>	<i>dollars</i>	<i>thousand dollars</i>
1994-95	34,462	139,617	5.60	782,340	0.935	731,173
1995-96	34,795	135,320	5.75	777,870	0.935	727,578
1996-97	34,600	136,461	5.69	776,677	0.940	730,296
1997-98	34,565	145,094	5.57	808,678	0.957	773,617
1998-99	35,387	150,017	5.65	847,760	0.977	828,098
1999-00	36,871	151,487	5.64	854,394	0.970	828,557