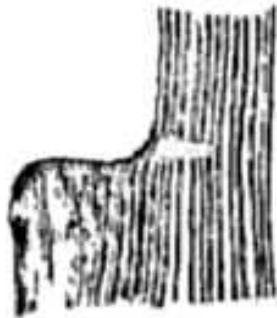


CUTTHROAT GRASS

Panicum abscissum Swallen

Plant Symbol = PAAB

Contributed By: USDA NRCS National Plant Data Center



From Hitchcock (1950)
@ plants.usda.gov

Alternate Names

Cutthroatgrass

Uses

Cattle graze cutthroat grass all year. Deer graze it in the spring.

Status

Please consult the PLANTS Web site and your State Department of Natural Resources for this plant's current status, such as, state noxious status and wetland indicator values.

Description

Grass Family (Poaceae). Cutthroat grass is native, warm-season, robust, rhizomatous perennial. The height ranges from 2 to 4 feet. The leaf blade has a narrow keel from 16 to 18 inches long and is twisted when dry. The leaf sheath is mostly basal and overlapping, keeled, wide, and cuts back sharply at collar. The ligule has a membrane about 1/32 inches long. The seedhead is an open purple panicle 8 to 10 inches long.

Distribution: For current distribution, please consult the Plant Profile page for this species on the PLANTS Web site.

Management

Livestock that graze it in the winter must be fed a complete mineral and protein supplement. Deferred grazing every few years during the spring for at least 90 days keeps this grass vigorous and productive. Occasional controlled burning eliminates unused material. New growth following a burn is excellent forage.

Establishment

Growth starts in January, but little foliage is produced until March, April, and May. It regrows well after spring grazing. The seedheads appear in June with seed ripening in late July and early August. It reproduces primarily from robust, thick rhizomes. It grows well in 35- to 40-percent shade and only on strongly acid, seepy, sandy sites.

Cultivars, Improved and Selected Materials (and area of origin)

Please contact your local NRCS Field Office.

Reference

Leithead, H.L., L.L. Yarlett, & T.N. Shiflett. 1976. 100 native forage grasses in 11 southern states. USDA SCS *Agriculture Handbook No. 389*, Washington, DC.

Prepared By & Species Coordinator:

Percy Magee, USDA NRCS National Plant Data Center, Baton Rouge, Louisiana

Edited: 13may02 ahv; jul03 ahv; 20sep05 jsp; 070116 jsp

For more information about this and other plants, please contact your local NRCS field office or Conservation District, and visit the PLANTS Web site <<http://plants.usda.gov>> or the Plant Materials Program Web site <<http://Plant-Materials.nrcs.usda.gov>>

The U.S. Department of Agriculture (USDA) prohibits discrimination in all its programs and activities on the basis of race, color, national origin, sex, religion, age, disability, political beliefs, sexual orientation, and marital or family status. (Not all prohibited bases apply to all programs.) Persons with disabilities who require alternative means for communication of program information (Braille, large print, audiotape, etc.) should contact USDA's [TARGET Center](#) at 202-720-2600 (voice and TDD).

To file a complaint of discrimination write USDA, Director, Office of Civil Rights, Room 326-W, Whitten Building, 14th and Independence Avenue, SW, Washington, DC 20250-9410 or call 202-720-5964 (voice or TDD). USDA is an equal opportunity provider and employer.

Read about [Civil Rights at the Natural Resources Conservation Service](#).