



## Missouri District 5

Boone, Callaway, Cole/Miller, Franklin, Gasconade, ,Moniteau, Montgomery, Morgan, Osage/Maries, St. Charles, St. Louis, Warren

United States  
Department of  
Agriculture

August 1, 2008

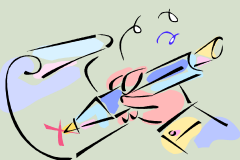
### INSIDE THIS ISSUE:

Interest Rates	2
Disaster Program	2
Office Directory	3
CRP Options	3
Important Dates	4
CRP Feed Release	3

## Direct & Counter- Cyclical Program

Signup is currently underway for the 2008 program. Producers can now signup for 2008 DCP at the county office until **September 30, 2008.**

Because of high volume we suggest that you call ahead so we can serve you better and provide prompt service.

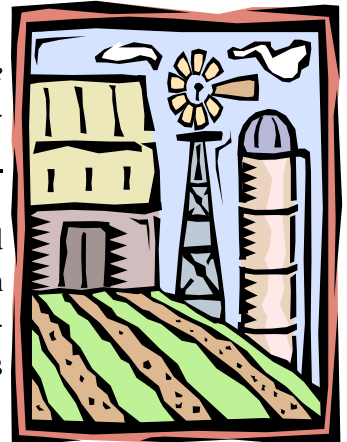


### **Corn, Milo, Soybean, Wheat, Hay, CRP Reports Due by Aug 15th**

County offices are taking crop reports with planting dates on corn, soybeans, milo and wheat. Producers also need to report CRP, hay and permanent pasture and prevented planting acres at this time. **Double Crop Soybean reports are also due.**

A complete acreage report on all cropland must be filed in order to receive program payments. The final reporting date on all cropland has been extended to **August 15, 2008.**

**Reminders:** Check planted acres, planting dates and crop shares. Acreage and shares should be consistent with crop insurance, crop sales receipts and Direct and Counter-Cyclical Programs. Program benefits may depend on shares being reported correctly.



### **Reminder to "MAINTAIN" Idle Acres for 2008**

Due to weather conditions, many offices are taking prevented planting acreage reports. Producer should be aware that idle acres (including those prevented from being planted or failed) that are receiving payments in the DCP program must be maintained. Weeds must be controlled and erosive acres adequately protected with appropriate cover. Failure to comply with this provision could result in penalties.

### **New and Revised Disaster Programs Announced**

Five disaster programs collectively referred to as Supplemental Agriculture Disaster Assistance are available beginning in 2008 through 2012. The following programs are now subject to purchase of a minimum of catastrophic level (CAT) of crop insurance and coverage of non-insurable crops (NAP):

1. Emergency Assistance for Livestock, Honey Bees, and Farm-Raised Fish\* (ELAP)
2. Livestock Forage Disaster Program\* (LFP)
3. Livestock Indemnity Program\* (LIP)
4. Supplemental Revenue Assistance Payments (SURE) Program\*
5. Tree Assistance Program\*(TAP)

*\*See Page 2 for a more detailed explanation of these programs*



# Want to be SURE?

## Crop and Livestock Disaster Assistance\* Available For Producers Without Insurance Coverage

USDA's Farm Service Agency (FSA) will allow producers who would otherwise be ineligible for the new disaster assistance programs to become eligible by paying a buy-in fee. For the 2008 crop year ONLY, producers may buy into this program before **Sept. 16, 2008**, if they do not currently have crop insurance or NAP coverage on ALL their crops, hay, pasture. For 2008 only, each crop to be covered will require a \$100 fee with a maximum of \$300 per county or \$900 for multi-county producers. Any coverage you have already paid the premium on will count toward these maximums. Complying with this regulation would make the producer eligible to participate in the Supplemental Revenue Assistance Payments (SURE) for crops, livestock programs such as LIP (Livestock Indemnity Program), LFP (Livestock Forage Disaster Program), ELAP (Emergency Assistance for Livestock, Honey Bees, and Farm-raised Fish), and the Tree Assistance Program (TAP). Fees may be waived for producers meeting limited resource criteria or who are socially disadvantaged.



Please keep in mind that if you have hay and/or pasture ground, each of these practices will require a \$100 fee of coverage, also. **IMPORTANT!** -- Producers buying-in under this special 2008 exemption will not have insurance or NAP coverage, but are merely fulfilling a requirement to be eligible if the SURE program takes effect for this year.

**Crop insurance and NAP coverage on ALL uninsurable crops is a requirement each year until 2012 for any chance of receiving disaster benefits.** The program will go into effect only in a county (or contiguous county) for which a natural disaster has been declared or for producers with greater than a 50% loss in total production for the year. **All counties in**

### District five (listed on pg. 3) now have a Presidential Disaster Designation effective July 7, 2008

Unlike programs of the past, this program compares your **total farm revenue** for the year against a “**disaster assistance program guarantee**”. The program will then pay 60% of the difference of these two figures.

**Please keep in mind that the national price used for these calculations is not known until 12 months after harvest, therefore, the potential program will always run a year behind. Until these prices are known, it is difficult to calculate a potential loss benefit.**

### Maintaining Stored Grain Quality

Since summer is here, producers are reminded to keep an eye on the condition and quality of stored grain. Remember to contact your local FSA office if you notice changes in the condition and quality of any stored grain under CCC loan.

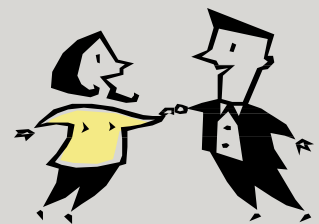
### August Select Interest Rates

- ◆ Farm Operating-Direct 3.875 %
- ◆ Farm Ownership Direct 5.25%
- ◆ Limited Resource 5.00%
- ◆ Farm Ownership-Direct Down Payment or Beginning Farmer 1.5%
- ◆ Emergency 3.75%
- ◆ Farm Storage Facility 3.625%
- ◆ Commodity Loans 3.375%

### Attention :

#### **Husbands and Wives**

*A husband and wife may sign documents on behalf of each other for FSA and Commodity Credit Corporation programs in which either has an interest. This option is automatically available unless a written request for exclusion is made to the county office from either spouse. Husbands and wives, like other entities, who have “official” joint ventures or partnerships must have a power of attorney on file to sign for the entity.*



## Emergency Grazing or Managed Haying, Grazing CRP Acres Options

USDA had authorized certain acreage enrolled under the Conservation Reserve Program (CRP) to be available for hay or forage as critical feed use. On July 8, 2008 a Temporary Restraining Order suspended the critical use activity. County offices have now contacted interested CRP producers with their critical feed use status.

CRP producers should remember that the **Managed haying or grazing on Conservation Reserve Program** acres may now be an option. Haying is permitted from July 16th– September 30th and grazing from July 16–September 30th, but not on the same acres. Acreage hayed/grazed in either of the last 2 years is ineligible for release this year. The hay may be sold and the pasture leased if the CRP participants does not need the acres for their own livestock.

USDA has also announced **Emergency Grazing** in counties designated as primary and contiguous disasters areas because of the recent flooding. All counties in District 5 are eligible for the emergency CRP grazing.

**Before the county committee can allow haying or grazing, there must be an approved haying and/or grazing plan. A 25 percent payment reduction is assessed for every approved acre.** Sign up at your county office to hay and/ or graze CRP acres under the Managed or Emergency CRP options.



## Required Mid-Contract Management for CRP Acreage

If you enrolled land in CRP after the 26th signup (contracts that became effective October 1, 2003), certain contracts are required to complete a series of mid-contract management practices on the acreage. These practices include: strip disking, prescribed burning or chemical applications. **These management practices are mandatory and there are no waivers or options to void the requirement to complete them.**

**There is a certain time period during each year that the management practice must be performed depending on the established cover. These practices were contained in your conservation plan of operation that you completed with NRCS at the time your acreage was enrolled in CRP. Cost-share is available for all three practices and you must report completion of the practice to your FSA office.**

If you have any questions concerning these management practices contact your local NRSC office or technical service provider (TSP). Penalties for non-compliance are expensive.

The Sales closing date for crops covered under the Noninsured Crop Disaster Assistance Program

## District 5 Service Centers

### Michelle Motley District Director

Boone  
Kim Viers, CED  
601 Bus Loop 70W  
Columbia, MO 65203  
573-875-5540 FAX 573-875-5547  
COC Meets 2<sup>nd</sup> Tues. @ 8:30 am.

Callaway  
Darrell Campbell, CED  
Mark Mudd, FLM  
4549 State Rd H  
Fulton, MO 65251-5465  
573-592-1400 FAX 573-592-1450  
COC Meets 2<sup>nd</sup> Tues. @ 9 am.

Cole-Miller  
Drew Parmley, CED  
Kelly Volmert, FLM  
1911 Bogg's Creek Road  
Jefferson City, MO 65101  
573-893-5196 FAX 573-893-7238  
COC Meets 1<sup>st</sup> Wed. @8:30 am.

Franklin  
Sheria Yancey, CED  
1004 Vondera Ave., Suite 1  
Union, MO 63084-3122  
636-583-2303 FAX 636-583-3571  
COC Meets 1<sup>st</sup> Wed. @ 8:00 am.

### Gasconade

316 Olive Street  
Owensville, MO 65066  
573-437-4131 FAX 573-437-4771  
COC Meets 2<sup>nd</sup> Thurs. @ 8:45 am.

### Moniteau

Daryl Raihel, CED  
410 West Buchanan  
California, MO 65018  
573-796-4691 FAX 573-796-4520  
COC Meets 3<sup>rd</sup> Thurs. @ 9 am.

### Montgomery

Priscilla Eggering, CED  
1013 South Sturgeon  
Montgomery City, MO 63361-2700  
573-564-2262 FAX 573-564-3967  
COC Meets 1<sup>st</sup> Tues. @ 9 am.

### Morgan

Dennis Schad, CED  
100 S Burke Street  
Versailles, MO 65084  
573-378-4589 FAX 573-378-6163  
COC Meets 2<sup>nd</sup> Fri. @ 9 am.

### Osage-Maries

Randy Frisbee, CED  
1315 East Main Street  
Linn, MO 65051  
573-897-2138 FAX 573-897-4107  
COC Meets 2<sup>nd</sup> Thurs. @ 8:30 am.

### St. Charles-St. Louis

Brian Mulherin, CED  
160 St. Peters Centre Blvd.  
St. Peters, MO 63376  
636-922-2833 FAX 636-922-2840  
COC Meets:  
St. Charles-3<sup>rd</sup> Wed. @ 9am  
St. Louis-3<sup>rd</sup> Thur. @ 9am

### Warren

Ryan Eddy, CED  
635 W. Booneslick RD  
Warrenton, MO 63383  
636-456-3433 FAX 636-456-3712  
COC Meets 1<sup>st</sup> Mon. @ 9 am



United States Department of Agriculture  
Farm Service Agency  
Boone County  
601 Bus Loop 70W Suite 213E  
Columbia, MO 65203

Official Business

Crop Reports Due Aug 15, 2008

"The U.S. Department of Agriculture (USDA) prohibits discrimination in all its program and activities on the basis of race, color, national origin, age, disability, and where applicable, sex, marital status, familial status, parental status, religion, sexual orientation, genetic information, political beliefs, reprisal, or because all or part of an individual's income is derived from any public assistance program. (Not all prohibited bases apply to all programs.) Persons with disabilities who require alternative means for communication of program information (Braille, large print, audiotape, etc.) should contact USDA's TARGET Center at (202) 720-2600 (voice and TDD). To file a complaint of discrimination, write to USDA, Director, Office of Civil Rights, 1400 Independence Avenue, S.W., Washington, D.C. 20250-9410, or call (800) 795-3272 (voice) or (202) 720-6382

## Dates to Remember

### August 15

Deadline to Report All Crops and Land Uses.

### September 1

Labor Day Holiday  
*Offices Closed*

### September 16

Final date to purchase disaster program buy-in applications

### September 30

DEADLINE  
to sign-up for the 2008  
DCP Program

### December 1

Extended Deadline for NAP coverage for apples, grapes, fall seeded crops and others.

### Ongoing

- ◆ Update Farm Changes.
- ◆ CRP Continuous Signup.
- ◆ Farm Facility Loans.

## Maturing General CRP Contracts:

CRP cover may be destroyed beginning July 1 of the final year of the General CRP contract only to begin preparation of a seedbed for fall-seeded crops. CRP participants with certain expiring acres, who intend to destroy cover for preparation for spring or fall-seeded crops will need a **pre-authorization** from FSA. There is not a payment reduction for the CRP acres, however the participant will be in violation if they fail to plant a fall-seeded crop in a normal manner.

The request can be submitted anytime during the final year of the contract and authorization can only be granted after a completed CRP-1G (Modification to Allow Early Preparation) is reviewed and approved. Additional details are available at the county offices.

## Administrative Offset and Delinquent Program Debt

If a producer has a program debt from an overpayment, violation or any other debt, FSA reserves the right to offset it. The debt may be collected by internal administrative offset from any CCC or FSA payments the producer is entitled to. *This would include any final DCP and CRP payments made this fall.*

If the debt cannot be collected through offset, additional actions may be taken. They include the assessment of late payment interest, administrative costs, and penalties; administrative wage garnishment; reporting the debt to credit bureaus; referring the debt to private collection agencies and debt collection centers. The agency could also collect the debt by offset of qualified disbursements and refunds, including federal tax refunds; referring the debt for litigation (if collection administratively is unsuccessful); and reporting the debt to the Internal Revenue Service. Please work with your county office to resolve any debt promptly.

**More information will be coming soon on the 2009-2013 Farm Program. Watch future newsletters for updates.**

See you  
at the

