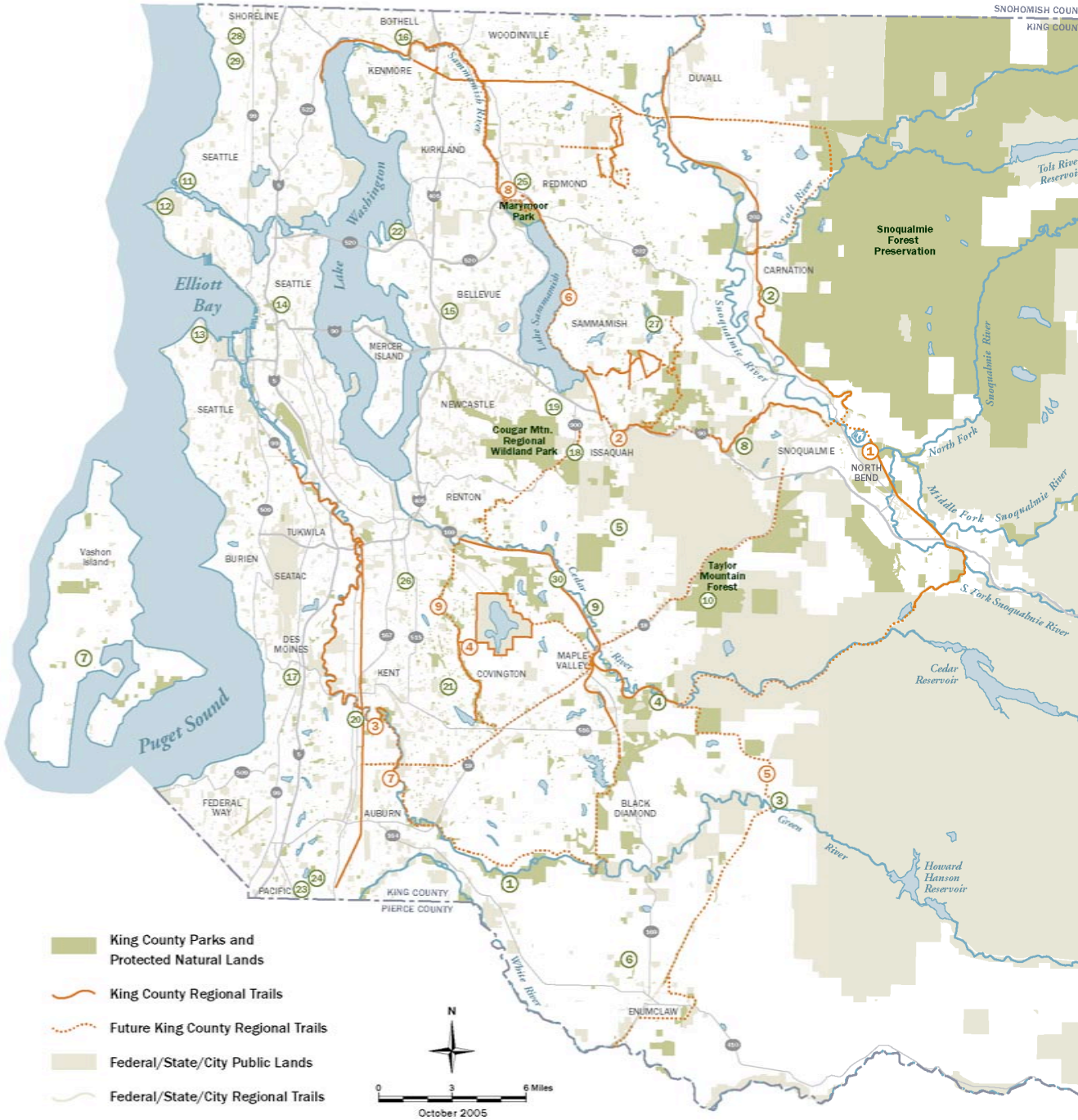


KING COUNTY OPEN SPACE AND TRAILS 2006



OPEN SPACE

1	Green River NA	39.0 Acres	\$275,000
2	Griffin Creek	3.5 Acres	\$75,000
3	Kanaskat	37.0 Acres	\$450,000
4	Landsburg	27.9 Acres	\$64,811
5	Middle Issaquah	47.0 Acres	\$350,000
6	Middle Newaukum	30.0 Acres	\$145,000
7	Judd Creek	4.5 Acres	\$82,500
8	Raging River	10.0 Acres	\$300,000
9	Rainbow Bend	16.5 Acres	\$530,000
10	Taylor Mt.	80.0 Acres	\$300,000
11	Burke Gilman	0.3 Acres	\$150,000
12	Discovery Park	23.9 Acres	\$2,700,000
13	Duwamish Head	0.4 Acres	\$360,000
14	12th Ave Urban	0.2 Acres	\$500,000
15	Bellevue	17.0 Acres	\$885,000
16	Bothell	1.0 Acres	\$87,500
17	Des Moines	17.1 Acres	\$575,000
18	Issaquah M&H	40.0 Acres	\$150,000
19	Issaquah Preciplice	175.0 Acres	\$125,000
20	Kent - Mill Creek	2.0 Acres	\$40,000
21	Kent Clark Lake	15.5 Acres	\$785,000
22	Kirkland	3.6 Acres	\$82,000
23	Pacific Trail Hub	7.9 Acres	\$125,000
24	Pacific Wetlands	32.2 Acres	\$150,000
25	Redmond	0.8 Acres	\$120,000
26	Renton	3.6 Acres	\$170,000
27	Sammamish	17.0 Acres	\$400,000
28	Shoreline North	8.3 Acres	\$550,000
29	Shoreline South	15.6 Acres	\$450,000
30	Belmondo Reach	7.75 Acres	\$650,000
Total		676.8 Acres	\$11,624,811

TRAILS

1	Three Forks Natural Area Trailhead	\$313,412
2	Issaquah to Preston Trail Link	\$110,000
3	Green River Trail Phase II	\$653,453
4	Soos Creek Trail to Lake Youngs Trail	\$106,423
5	Landsburg to Kanaskat Trail Acquisition	\$224,000
6	East Lake Sammamish Trail Master Plan	\$790,300
7	Green River Trail Phase III Acquisition	\$1,000,000
8	Samm. R. Trail to East Lk. Samm. Trail Link	\$1,666,468
9	Soos Creek Trail Phase IV	\$3,185,147

Non Site-specific Trail Projects

Burke Gilman Trail Grant Match	\$100,000
Regional Trail Guidelines Update	\$196,748
Washington Trails Association Trail Projects	\$30,000
Trail System Improvements	\$379,977
Total	\$8,755,928