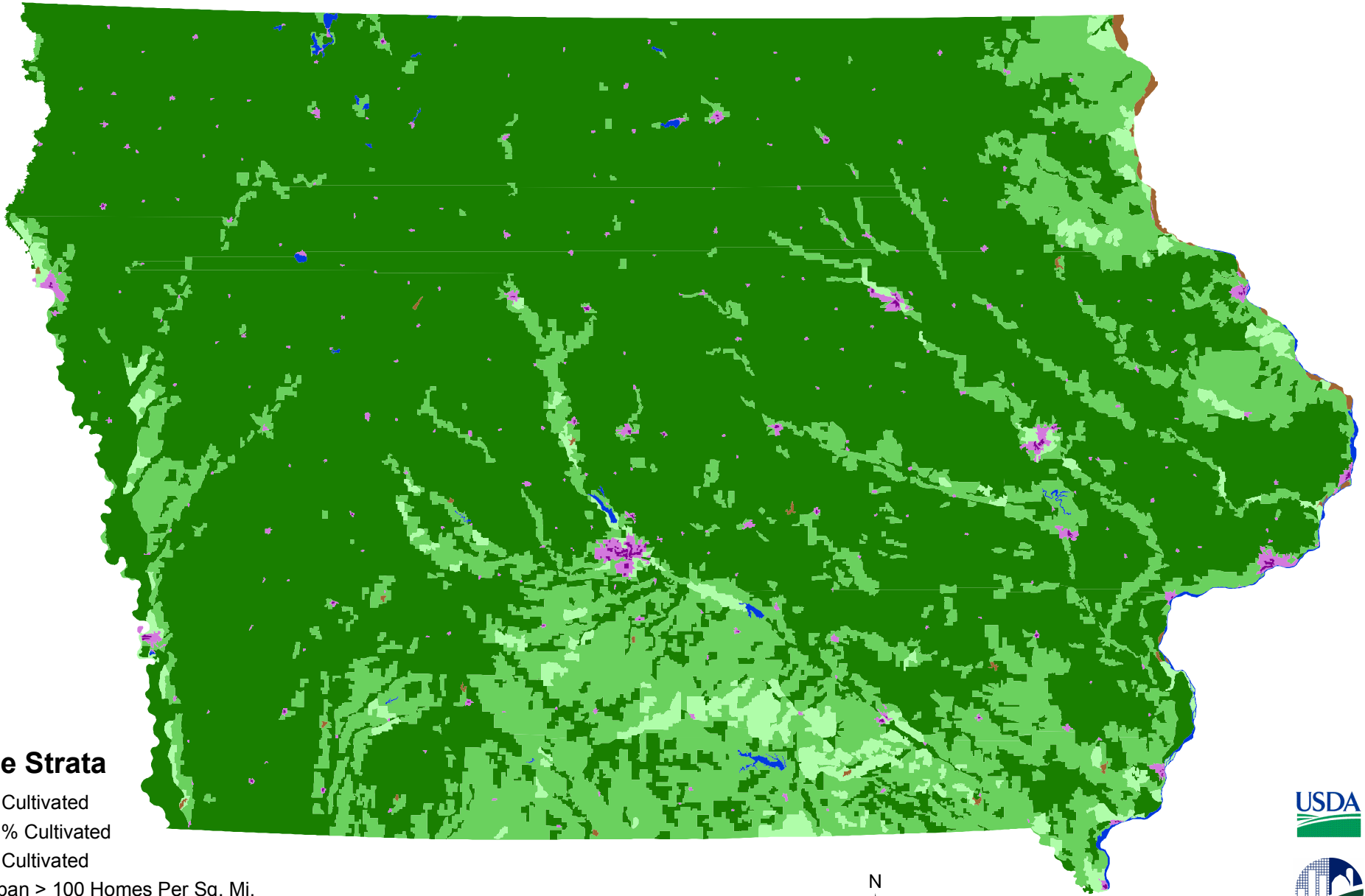


Stratification of Iowa 1989



Land Use Strata

- > 75 % Cultivated
- 25 - 75 % Cultivated
- < 25 % Cultivated
- Agri-Urban > 100 Homes Per Sq. Mi.
- Commercial/Dense Urban > 100 Homes Per Sq. Mi.
- Non-Agriculture
- Water

Projection: NAD 1983, UTM Zone 15



Prepared by Area Frame Section, 2006