

Vegetable Stand - In the same general vicinity as the scattered American Indian boulder rock shelters is a feature that has been identified as a vegetable and produce marketing structure with associated fields (Figure 33). The unrecorded structure itself was constructed of masonry stones and was built around and against a large boulder. This site could be very close to the rail alignment. It is presently identified with a small sign and is part of a signed and interpreted historic trail that runs north-south through the area west of Goldfield.

Rabbit Springs - Rabbit Springs lies just to the west of the proposed rail alignment. It was recorded as 26ES10 in 1955 and observed to include a small rock shelter and American Indian artifactual debris. As discussed in Section 3.2.2.6, Western Shoshones were living at the spring in 1902. Later, it became a primary water source for the town of Goldfield. The spring and its historical importance, resources, and possible values for modern American Indians have not been fully evaluated for cultural significance.

Gardner Mill - The early Gardner Mill was constructed about 1000 feet north of Rabbit Springs and began operation in April of 1905 and was closed by 1909 (Shamberger 1982: 204). Its original location would be close to the proposed rail alignment.

3.2.12 GOLDFIELD ALTERNATIVE ALIGNMENT 7

Goldfield Cemeteries - The various Goldfield cemeteries that exist on the western edge of the town are discussed in Section 3.2.2.7. The proposed Caliente-Yucca Mountain Railroad would pass these features just to the west, between the cemeteries and the base of Malpais Mesa. Based on available information, unidentified and/or unmarked graves could exist in the general area and care would have to be taken during the construction phase. Of particular note is the identified but unrecorded complex of graves located north of the formal cemetery location (Figure 21).

Goldfield Dump - The historic Goldfield dump occupies a large area on the western side of Goldfield. It has been recorded at 26NY726 and evaluated as being potentially eligible for the National Register of Historic Places based on its prospective ability to contribute important information to questions about mining camp housing and lifeways (Stornetta 1998: 80).

Unrecorded Boulder Rock Shelters and Other Resources - During field reconnaissances for the Rail Alignment EIS, a number of largely unrecorded American Indian sites were observed along the route of the Goldfield Alternative Alignment 4. These include several boulder rock shelters with artifact debris (Figure 18), lithic scatters and a boulder with rock art (Figure 19). This segment should be considered to have potential for encountering or passing in close proximity to a number of such prehistoric and/or proto-historic properties.

E

S

DOT MAINT. STATION

INDIAN PETROGLYPHS
GOLDFIELD GARDEN SPOT

BIKE TRAIL

SLAUGHTERHOUSE CANYON

J & C I & C S CO. REMAINS

AL BATH-POOL

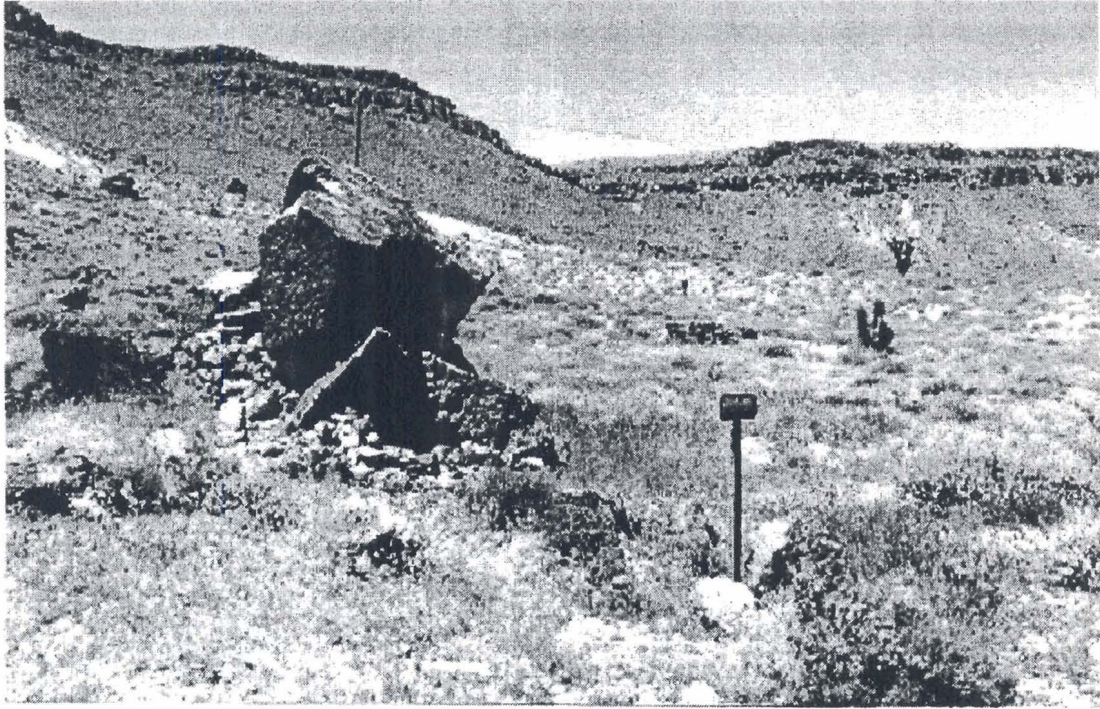
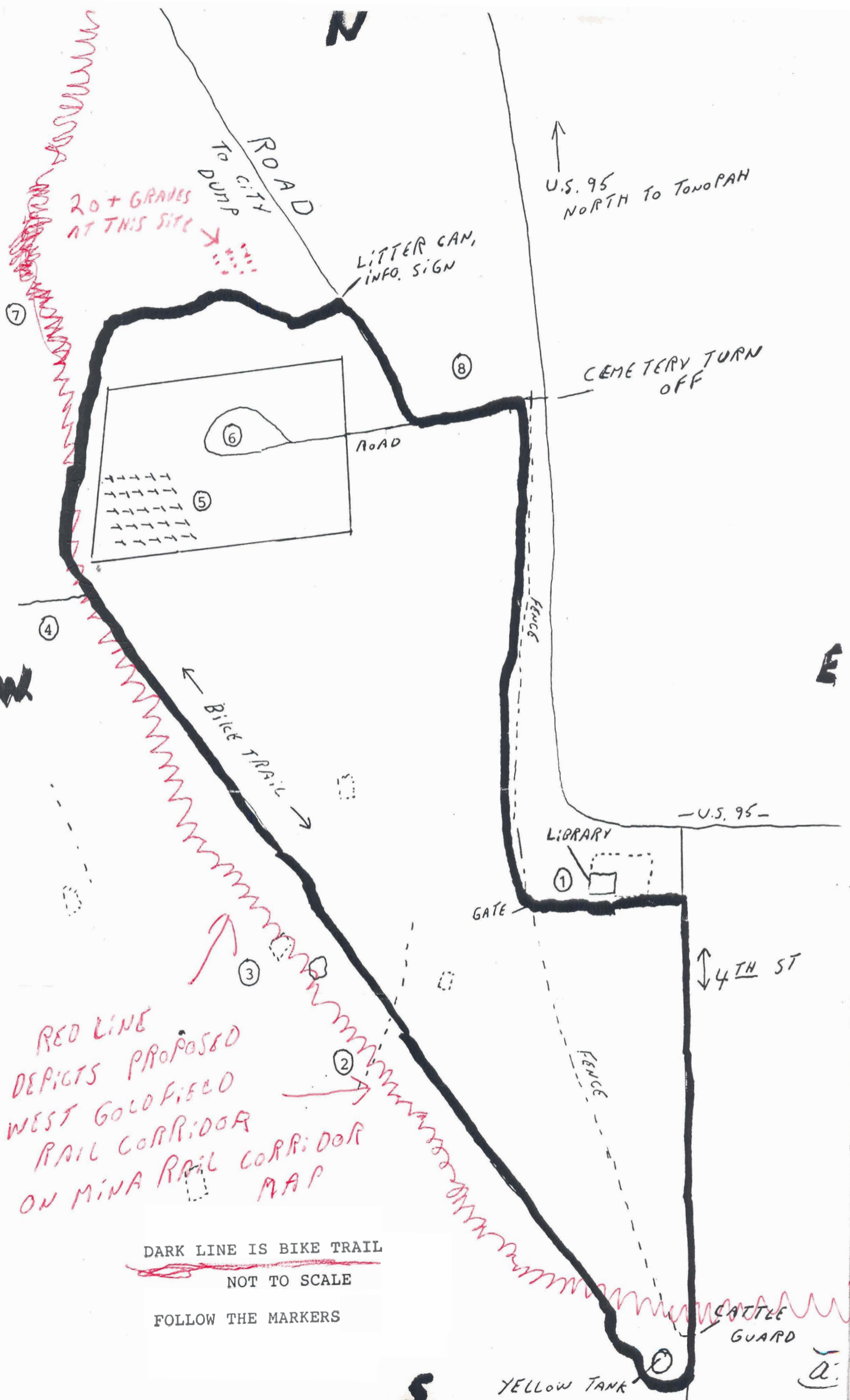


Figure 33. Remains of an Early Vegetable Stand and Fields West of Goldfield



DARK LINE IS BIKE TRAIL

NOT TO SCALE

FOLLOW THE MARKERS