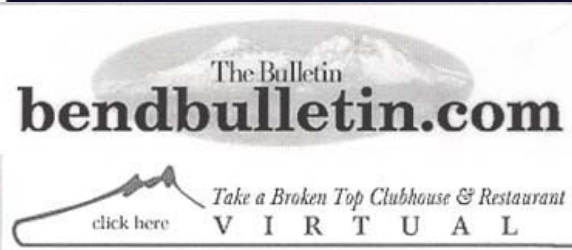




# **Water Resources Department**

---

## **Oregon Water Supply and Conservation Initiative**



## Water key ingredient in growth recipe

Published: October 7, 2000

Increasing need will be reflected

in consumers' bills

By Jim Witty

The Bulletin

More than any other commodity, water fueled the development of Central Oregon.

Racing clear and cold from the Cascades through the heart of the Deschutes Basin or bubbling up from underground, H<sub>2</sub>O turned the desert green and allowed farmers to settle a region.

Water still holds the key to

There will be a price tag for water consumers will spring

A diverse group of farmers, utility operators, municipalities, government agencies and environmentalists have come up with a strategy that could increase flows in the vulnerable middle stretch of the Deschutes — roughly from Bend to Lake Billy Chinook — by as much as 100 percent during drought years and help protect trout

**“More than a other commodity, water Fueled the development of Central Oregon.”**

**“Water, always the essential ingredient in the recipe for development, has become even more precious.”**

**“Water still holds the key to growth.”**

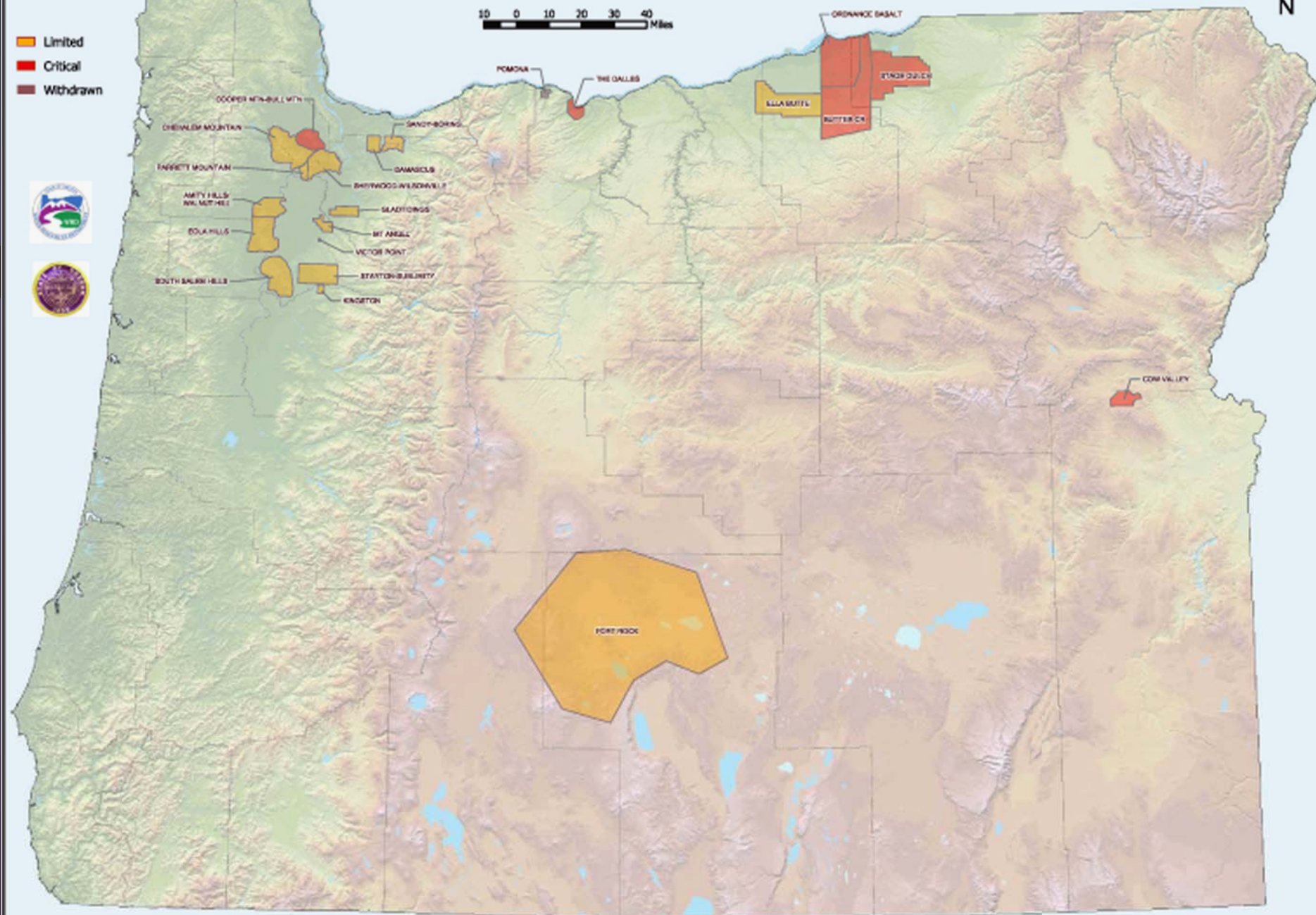
No water = No growth

# OREGON WATER RESOURCES DEPARTMENT GROUND WATER RESTRICTED AREAS

- Limited
- Critical
- Withdrawn



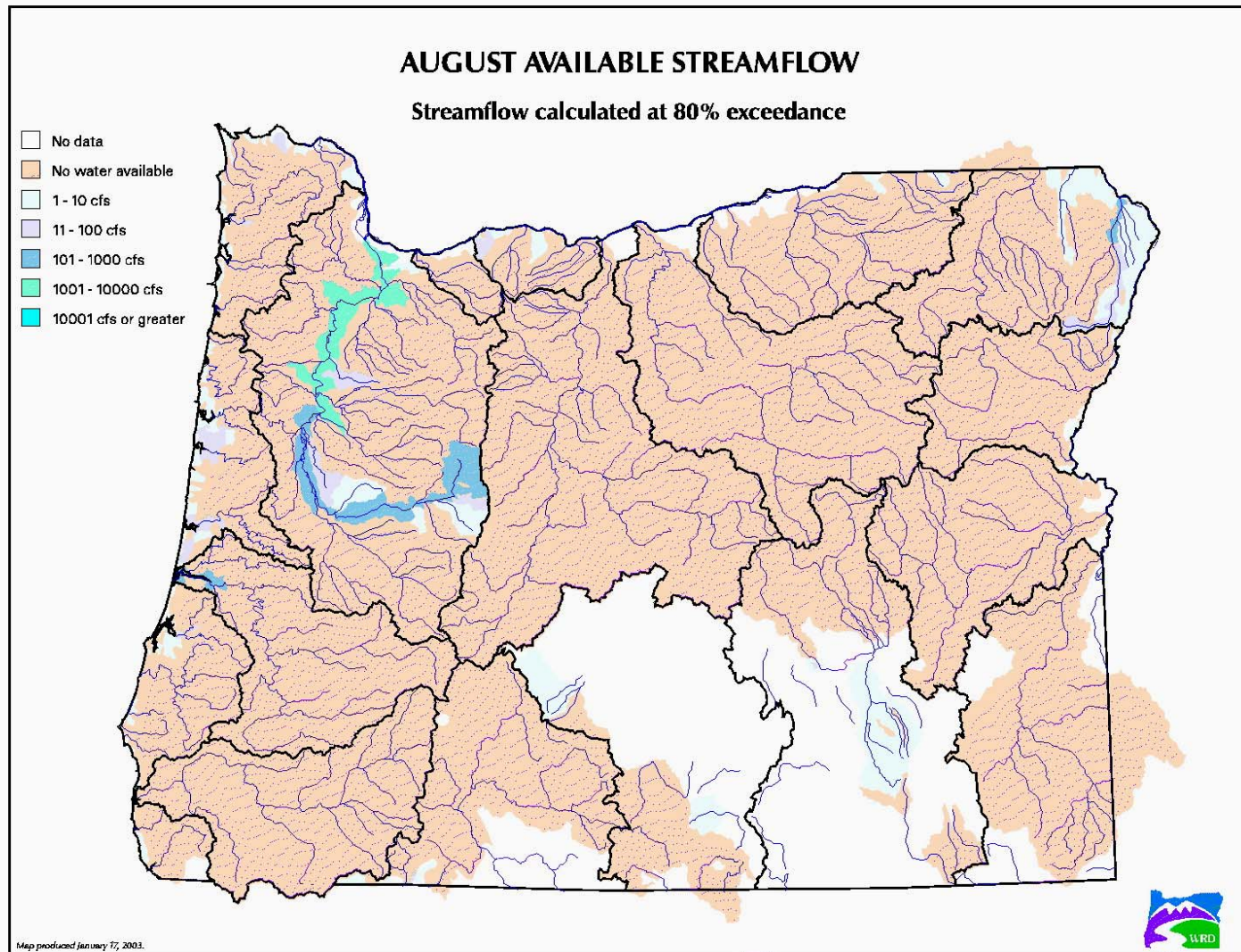
10 0 10 20 30 40 Miles







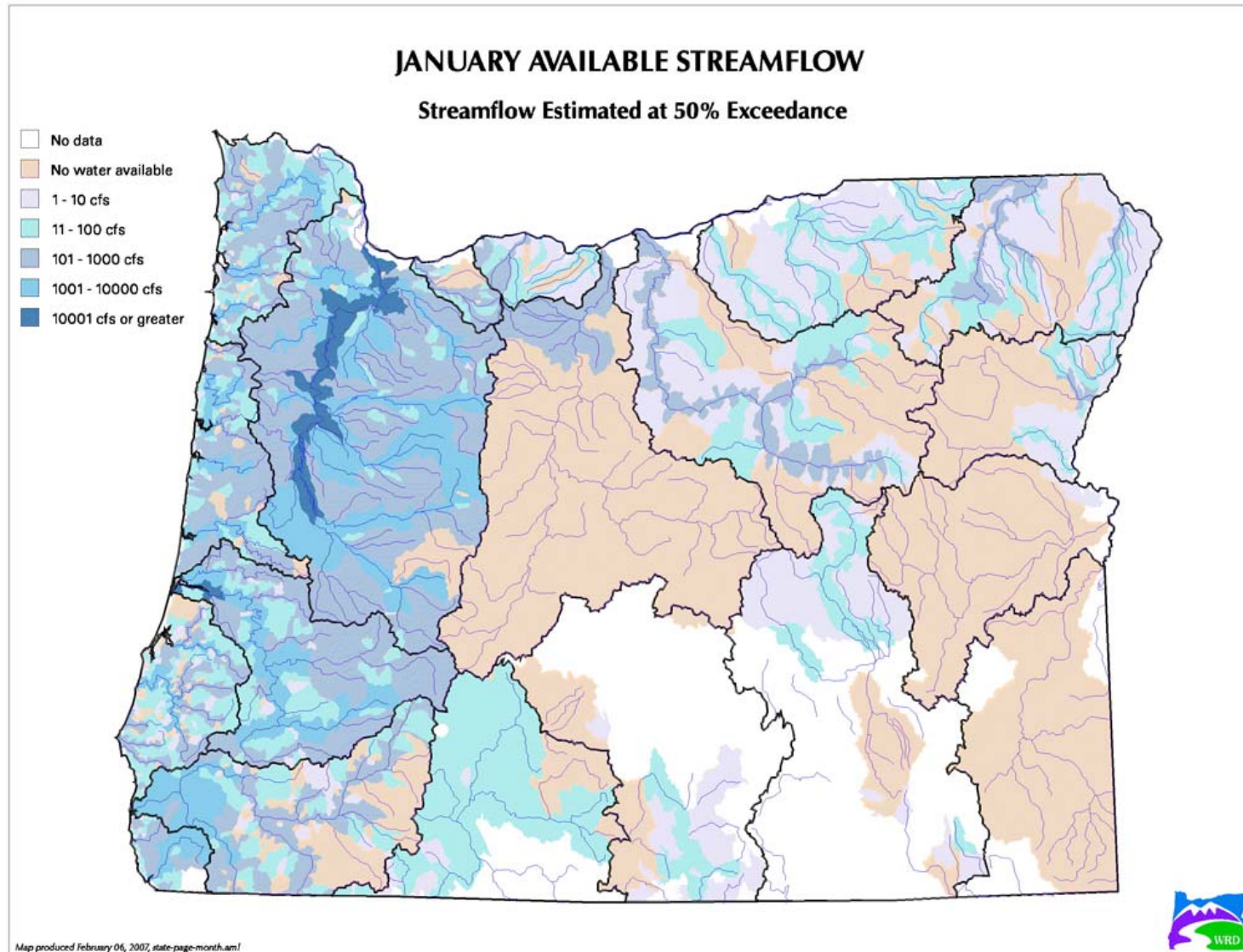
# Meeting Demands in Largely Appropriated System





# Budget Drivers and Issues

2



Map produced February 06, 2007, state-page-month.am!





# Addressing a Critical Need

- ❖ Continued source of water supply is essential to Oregon's future
- ❖ Surface water fully appropriated during summer months
- ❖ Ground Water development limited by hydraulic connection to surface water and recharge
- ❖ Diverse instream and out-of-stream demands
- ❖ Oregon population estimated to increase



# Budget Drivers and Issues

## Satisfying New Demands in a Largely Appropriated System

- Increasing need for water
  - ❖ Population growth
  - ❖ Economic development
  - ❖ Watershed restoration
- Decreasing available water supply





# Policy Option Packages

POP 403 –

## Oregon Water Supply & Conservation Initiative

### Description:

Creates funding for comprehensive overview of future water supply needs.

*3.00 FTE, \$891,025 GF.*

5

### Relationship to Performance Measures:

- ❖ Promote Water Supply Solutions (KPM #8)
- ❖ Flow Restoration (KPM #1)
- ❖ Equip Citizens with Information (KPM #6 and #7)
- ❖ Promote Efficiency (KPM #9)
- ❖ Customer Service (KPM #14)





# Initiative Components

---

- ❖ Assessment of existing and future water supply needs
- ❖ Inventory of potential storage sites
- ❖ Analysis of conservation opportunities
- ❖ Basin-yield estimates
- ❖ Match funding for community and regional water supply planning



# Assessment of Water Needs

---

- ❖ Request for Proposals
- ❖ Identification of existing supply issues
- ❖ Economic Trends
- ❖ Population Trends



# Inventory of Potential Storage

- ❖ Information needed to prioritize future projects
- ❖ Includes above ground and below-ground
- ❖ Below-ground options include:
  - Artificial Recharge (AR)
  - Aquifer Storage and Recharge (ASR)



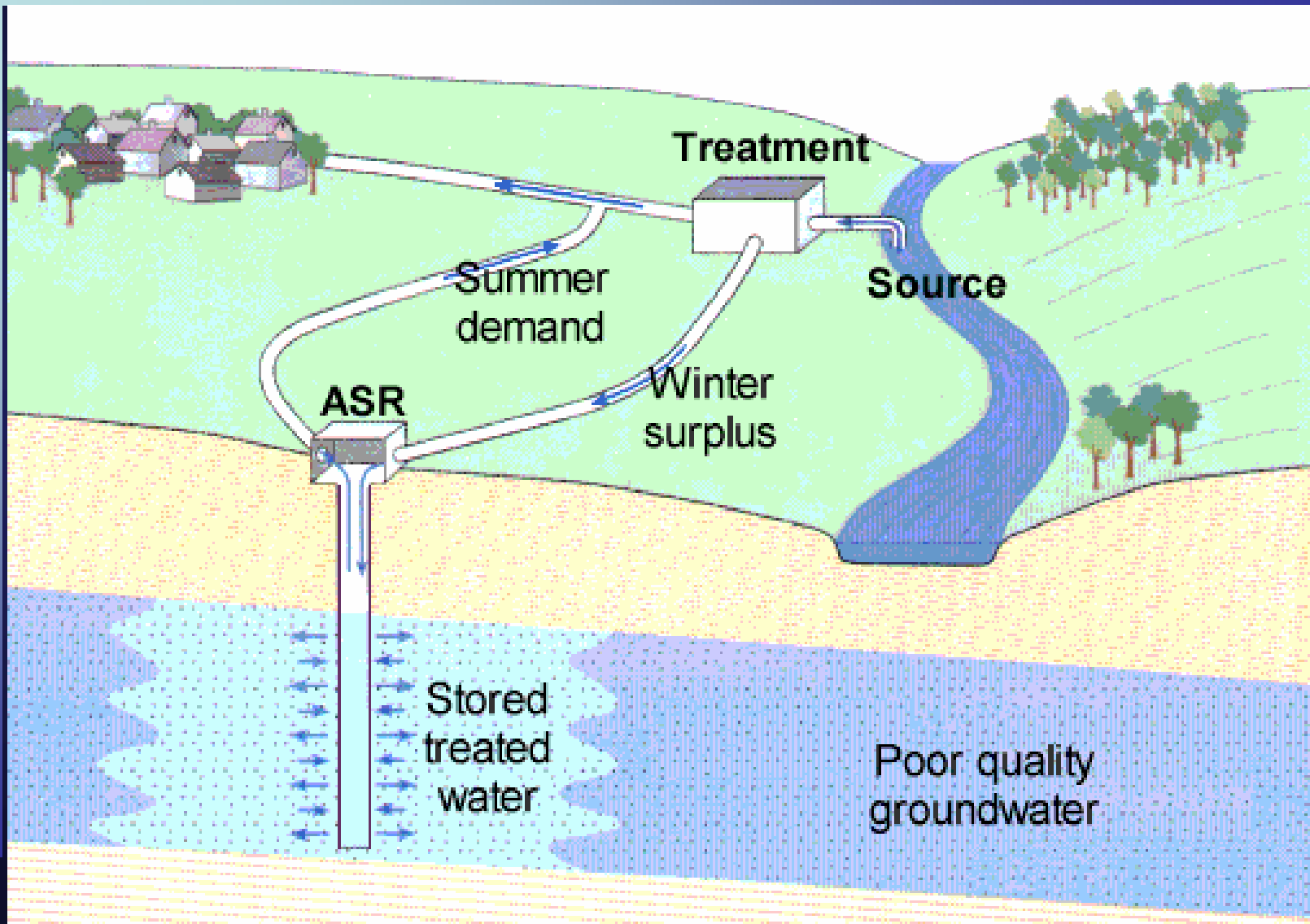
# Surface Water Storage Sites







# Aquifer Storage Recharge (ASR)



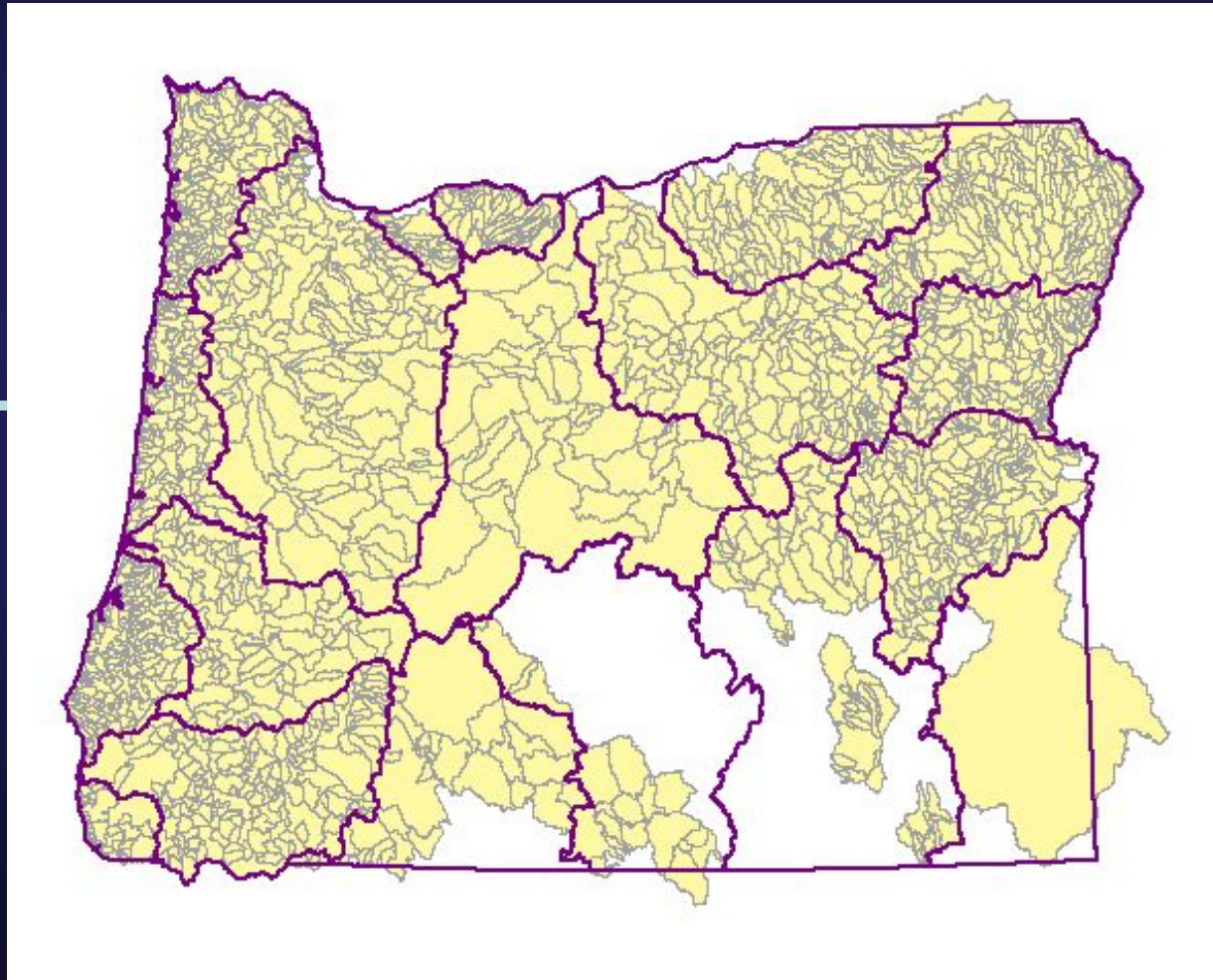


# Conservation Opportunities

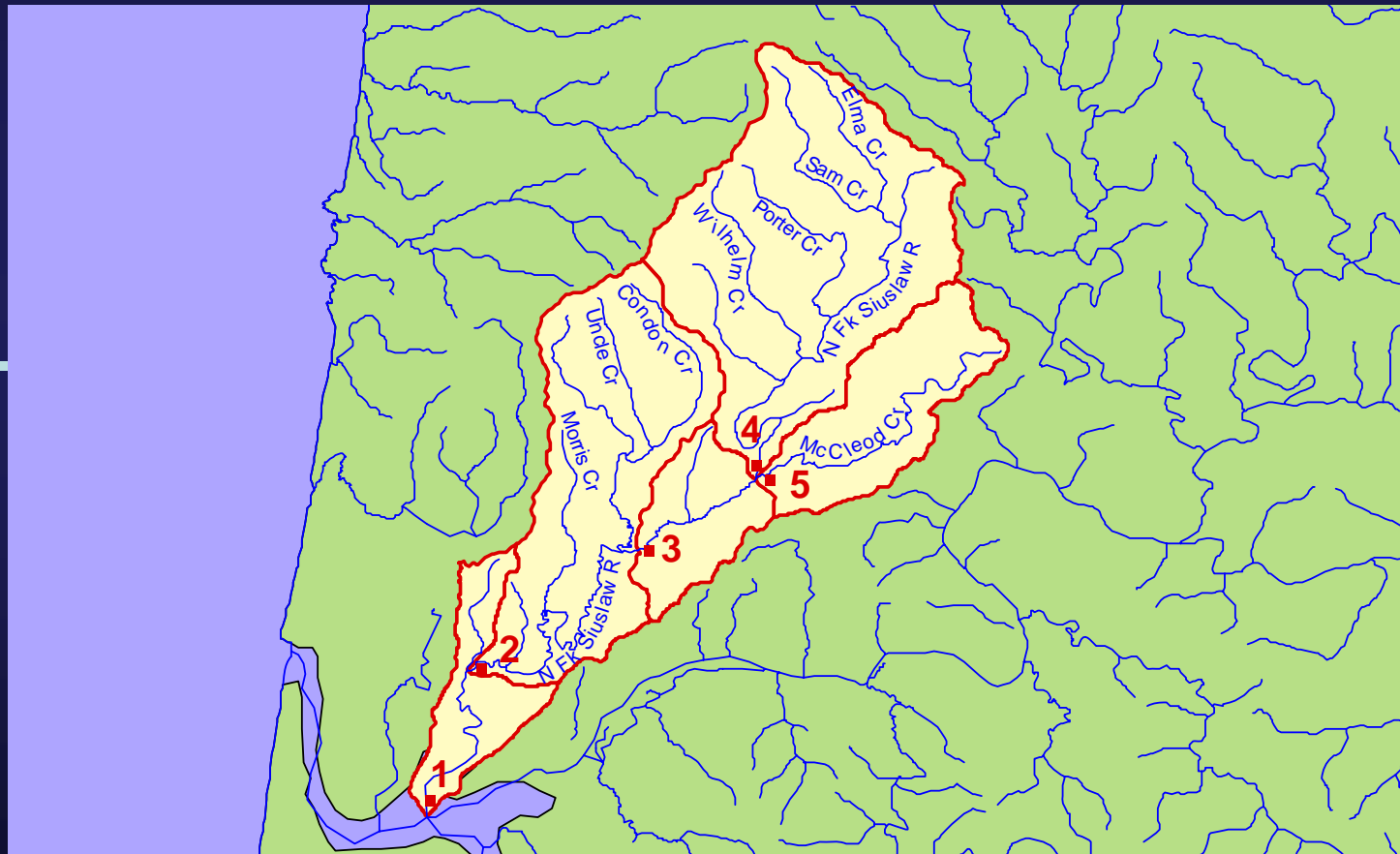
---

- ❖ Request for Proposals
  
- ❖ Existing Conservation Plans
  - Municipal Suppliers
  - Irrigation Districts
  - Other Conservation Planning Efforts

# Water Availability Basins in Oregon



# Basin Yield Estimates/Established Water Availability Basins







# Matching Funds for Local Planning





# Important Step Forward

- ❖ Creates tools for regional and community water supply planning
- ❖ Provides foundation for future efforts

