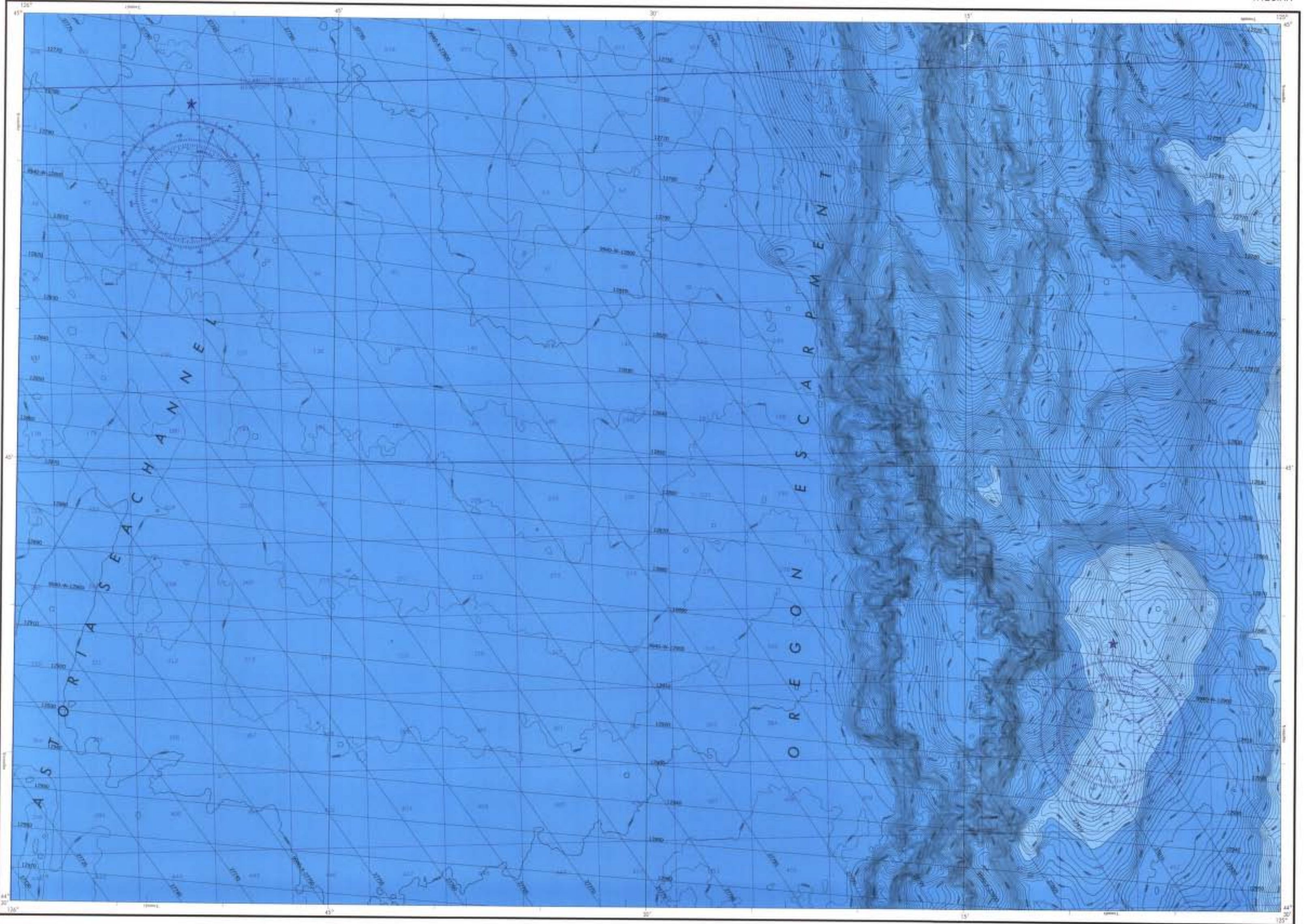




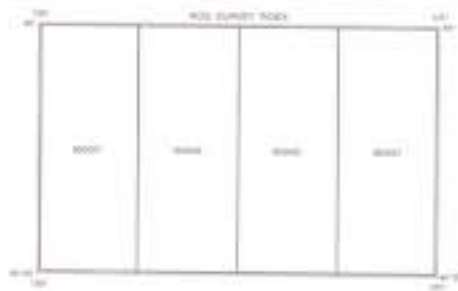
UNITED STATES

BATHYMETRIC MAP

OREGON COAST
YAQUINA



Base map information including bathymetry was compiled by the National Ocean Service (NOS). Bathymetry was compiled from ADCIRC multibeam sonar depth base data which comply with International Hydrographic Organization (IHO) S-44 Standard for Hydrographic Data. The data were collected by the Oregon State University (OSU) and the Oregon Department of Transportation (ODOT) as part of the Oregon Coastal Assessment Program (OCAP). The data were collected from 2001 to 2005. The data were processed and edited by the NOS. The data were collected from the Oregon Coastal Assessment Program (OCAP) and the Oregon Department of Transportation (ODOT). The data were processed and edited by the NOS. The data were collected from the Oregon Coastal Assessment Program (OCAP) and the Oregon Department of Transportation (ODOT). The data were processed and edited by the NOS.



Color	Depth Range (m)	Depth Range (fathoms)
Light Blue	0 to 10	0 to 5
Medium Blue	10 to 20	5 to 10
Dark Blue	20 to 30	10 to 15
Very Dark Blue	30 to 40	15 to 20
Black	40 to 50	20 to 25
Black	50 to 60	25 to 30
Black	60 to 70	30 to 35
Black	70 to 80	35 to 40
Black	80 to 90	40 to 45
Black	90 to 100	45 to 50

Published at Washington, D.C.
U.S. DEPARTMENT OF COMMERCE
NATIONAL OCEANIC AND ATMOSPHERIC ADMINISTRATION
NATIONAL OCEAN SERVICE
1991

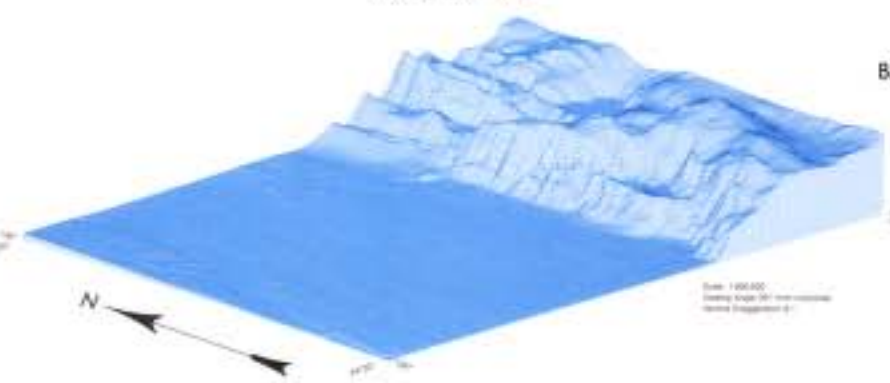
BATHYMETRIC CONTOUR INTERVAL: 20 METERS TO MAXIMUM DEPTH

DATUM: MEAN LOWER LOW WATER

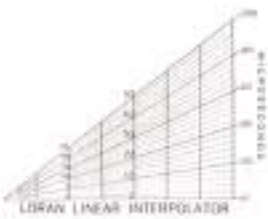
SCALE: 1:10,000



3-DIMENSIONAL VIEW



YAQUINA
(N445125W)
BATHYMETRIC MAP LM129



This document is the property of the National Oceanic and Atmospheric Administration. It is loaned to you and is not to be distributed outside your agency.