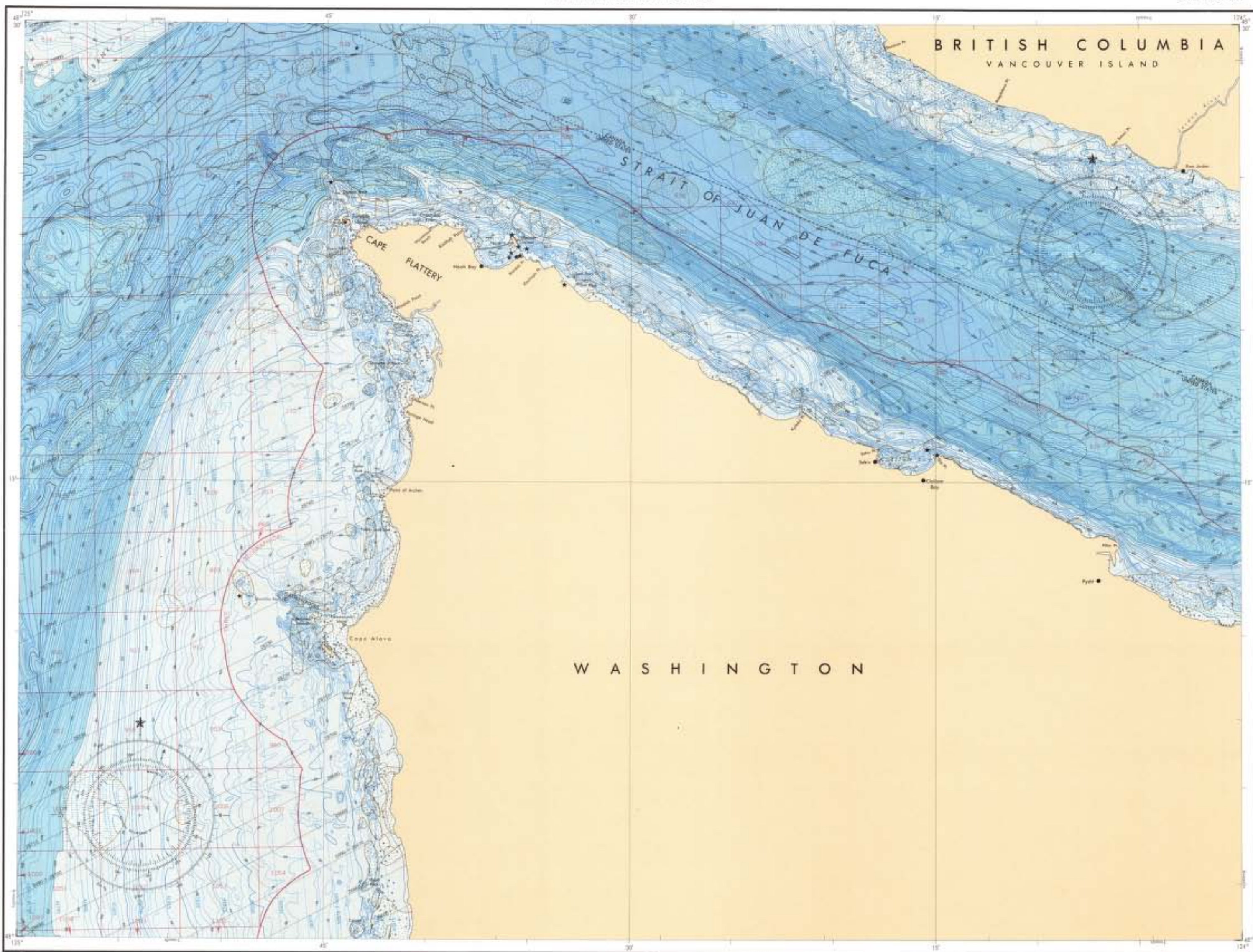




UNITED STATES

BATHYMETRIC FISHING MAP

STRAIT OF JUAN DE FUCA
CAPE FLATTERY

Base map information including bathymetry was collected by the National Ocean Service (NOS). Bathymetry collected from ADCS hydrographic surveys were (see index) which comply with International Hydrographic Organization (IHO) Standard Publication 44 provisions standards on those used at the date of the survey. This information is not intended for management purposes.

General Transverse Mercator Grid Zone 18 (18Q) Meter Ticks (1:100,000) are shown inside the map.

Offshore protection survey data, printed in red, collected by the Minerals Management Service. Heavy lines indicate limits of MMS Outer Continental Shelf Offshore Protection Diagram. The positions on this map are not for Federal listing purposes; for such purposes refer to the OCS Offshore Protection Diagram available from the Minerals Management Service.

SEDIMENT TYPES

Plat.	Green
Sand	Red
Shell	Blue
Sediment boundary	

Sediment information compiled from NOS hydrographic survey data.

MAP SYMBOLS

- Buoys, lights and daymarks (all types)
- Obstruction (all types)
- Wharves (all types)
- Submerged cables
- Federal Conservation Zone
- Exclusive Economic Zone



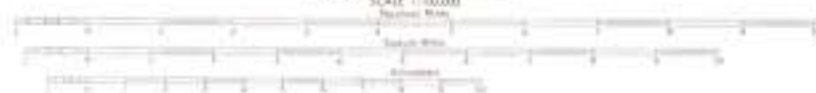
Published at Washington, D.C.
UNITED STATES DEPARTMENT OF COMMERCE
NATIONAL OCEANIC AND ATMOSPHERIC ADMINISTRATION
NATIONAL OCEAN SERVICE
1987

BATHYMETRIC EDITS/OUR INTERVALS: 10 METERS TO 200 METER DEPTH, SUPPLEMENTED BY 2 METER INTERVALS, THENCE 50 METERS TO MAXIMUM DEPTH, SUPPLEMENTED BY 10 METER INTERVALS.

DATUM: MEAN LOWER LOW WATER

TRANSVERSE MERCATOR PROJECTION

SCALE: 1:100,000

**NOT TO BE USED FOR NAVIGATION**

The information appearing on this Bathymetric Fishing Map is not complete for navigation and is not updated by Fishing to Manage announcements. Mariners are cautioned to use the following National Ocean Service number charts for navigation in the area covered by this Bathymetric Fishing Map: 16042, 16482, and 16483.



HYDROGRAPHIC SURVEY INFORMATION

DATE	NO. OF SOUNDINGS	NO. OF OBSERVATIONS	NO. OF FIXES	NO. OF FIXES
1987	100	100	100	100
1986	100	100	100	100
1985	100	100	100	100
1984	100	100	100	100
1983	100	100	100	100
1982	100	100	100	100
1981	100	100	100	100
1980	100	100	100	100
1979	100	100	100	100
1978	100	100	100	100
1977	100	100	100	100
1976	100	100	100	100
1975	100	100	100	100
1974	100	100	100	100
1973	100	100	100	100
1972	100	100	100	100
1971	100	100	100	100
1970	100	100	100	100
1969	100	100	100	100
1968	100	100	100	100
1967	100	100	100	100
1966	100	100	100	100
1965	100	100	100	100
1964	100	100	100	100
1963	100	100	100	100
1962	100	100	100	100
1961	100	100	100	100
1960	100	100	100	100
1959	100	100	100	100
1958	100	100	100	100
1957	100	100	100	100
1956	100	100	100	100
1955	100	100	100	100
1954	100	100	100	100
1953	100	100	100	100
1952	100	100	100	100
1951	100	100	100	100
1950	100	100	100	100
1949	100	100	100	100
1948	100	100	100	100
1947	100	100	100	100
1946	100	100	100	100
1945	100	100	100	100
1944	100	100	100	100
1943	100	100	100	100
1942	100	100	100	100
1941	100	100	100	100
1940	100	100	100	100
1939	100	100	100	100
1938	100	100	100	100
1937	100	100	100	100
1936	100	100	100	100
1935	100	100	100	100
1934	100	100	100	100
1933	100	100	100	100
1932	100	100	100	100
1931	100	100	100	100
1930	100	100	100	100
1929	100	100	100	100
1928	100	100	100	100
1927	100	100	100	100
1926	100	100	100	100
1925	100	100	100	100
1924	100	100	100	100
1923	100	100	100	100
1922	100	100	100	100
1921	100	100	100	100
1920	100	100	100	100
1919	100	100	100	100
1918	100	100	100	100
1917	100	100	100	100
1916	100	100	100	100
1915	100	100	100	100
1914	100	100	100	100
1913	100	100	100	100
1912	100	100	100	100
1911	100	100	100	100
1910	100	100	100	100
1909	100	100	100	100
1908	100	100	100	100
1907	100	100	100	100
1906	100	100	100	100
1905	100	100	100	100
1904	100	100	100	100
1903	100	100	100	100
1902	100	100	100	100
1901	100	100	100	100
1900	100	100	100	100

CAPE FLATTERY
BATHYMETRIC FISHING MAP