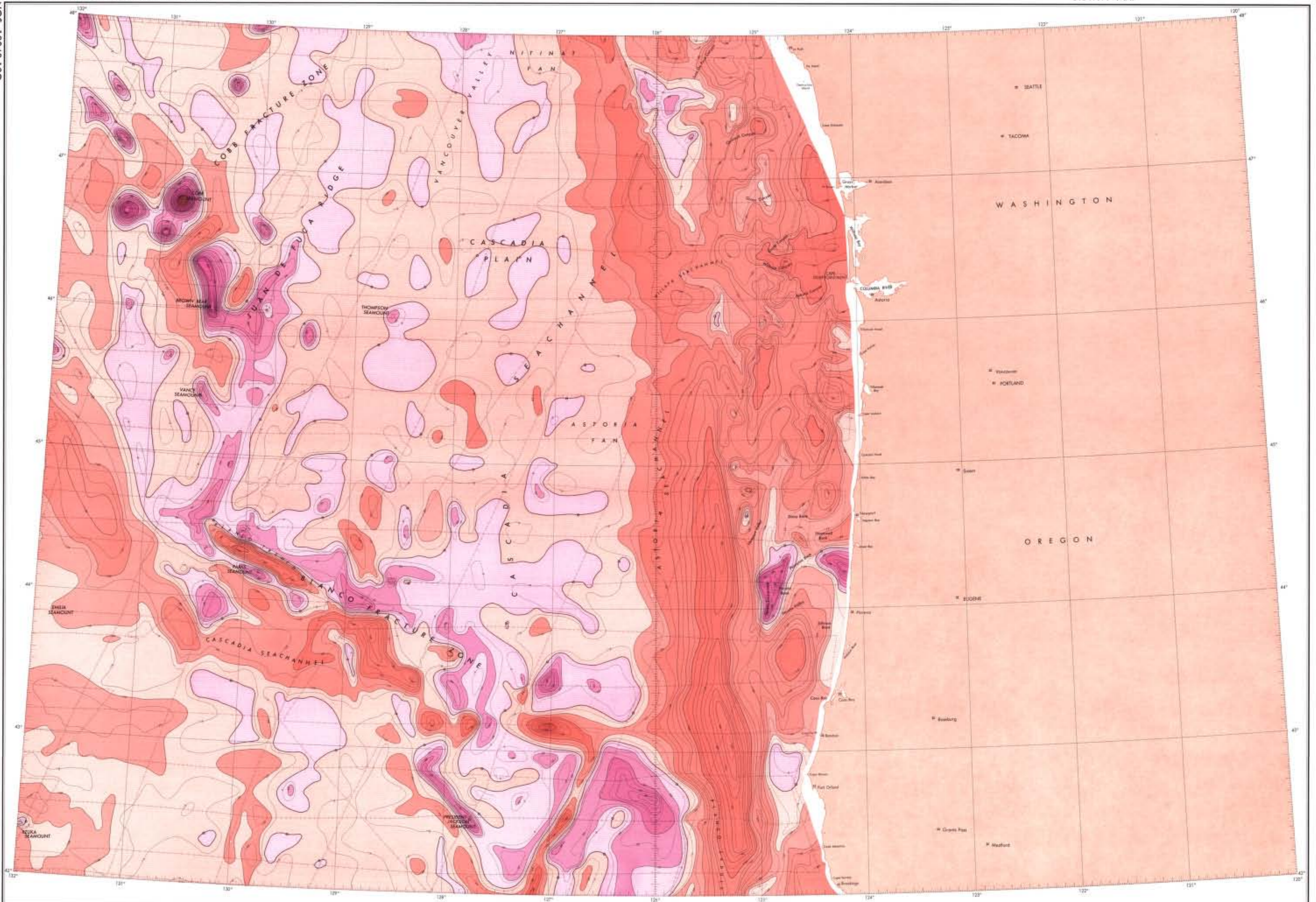


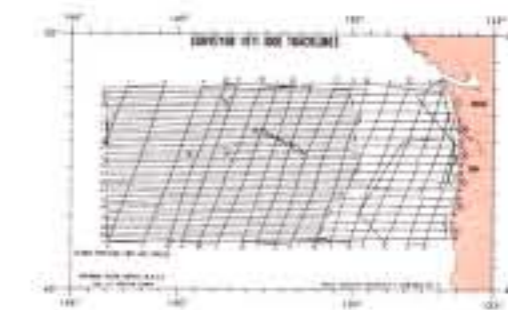
NOS 12042-12G



GRAVITY
The gravity data were obtained from satellite and sounding balloon gravimetry surveys 0-5 and 0-11, and the 0-20 satellite survey. Land has been shaded orange in part and red in other parts to indicate the error due to land effect. Over all anomalies were based upon International value obtained from the IUGW "Normaloid" formula.
The "grappled area" of concentration is 25 nautical miles.

GRAVITY LEGEND
CENTROID MATERIAL 5 MICRONS
— Positive Values
— Zero Balance
— Negative Values

NOS SEAMAP SERIES
NORTH PACIFIC OCEAN
Published at Washington, D.C.
U.S. DEPARTMENT OF COMMERCE
NATIONAL OCEANIC AND ATMOSPHERIC ADMINISTRATION
NATIONAL OCEAN SURVEY
1974



LAMBERT CONFORMAL CONIC PROJECTION
Scale 1:1,000,000
(Standard Parallels 43° and 47°)

NOS 12042-12G
PRICE \$2.00