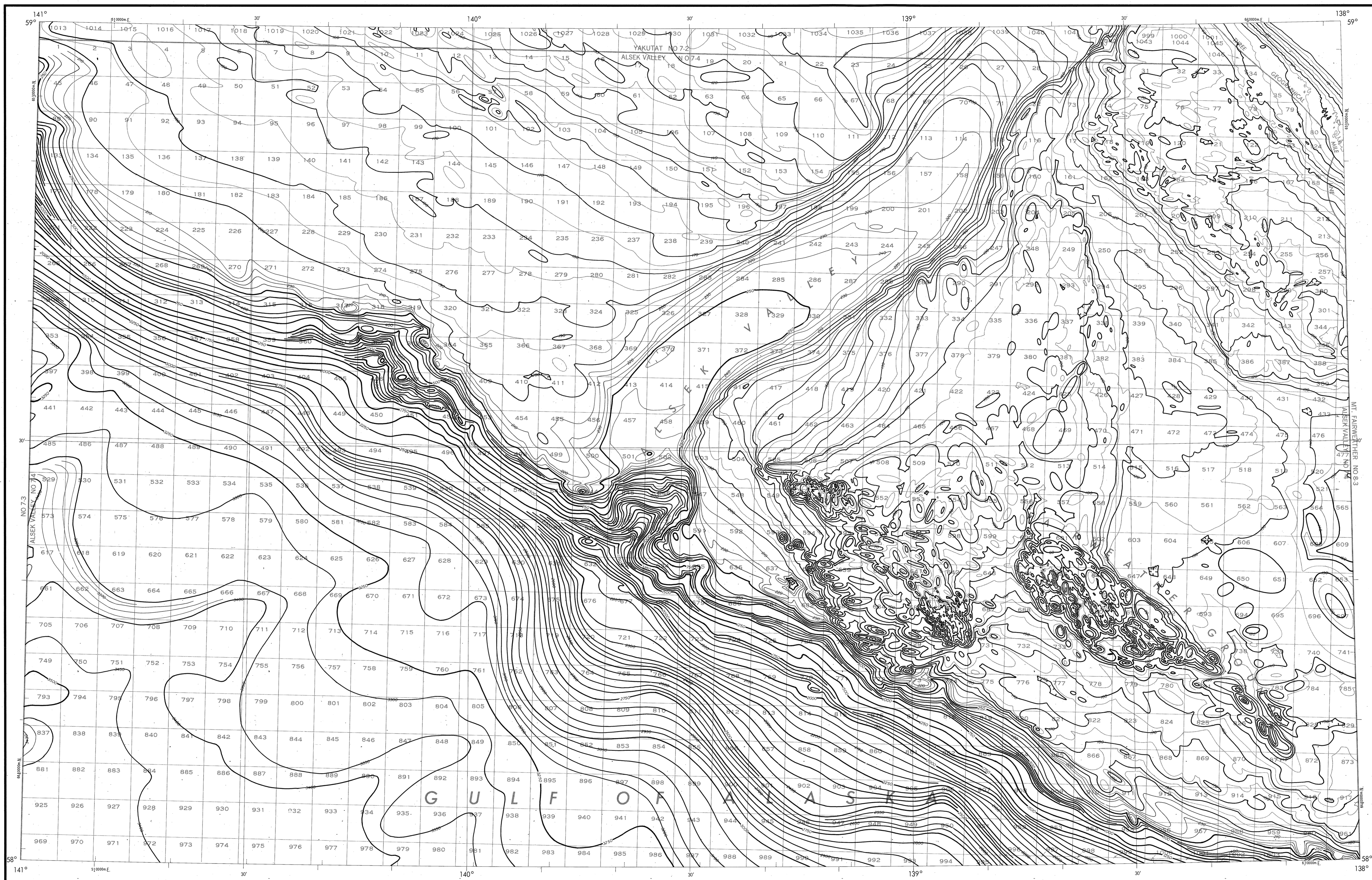


BATHYMETRIC MAP

GULF OF ALASKA
ALSEK VALLEY



Base map information including bathymetry was compiled by the National Ocean Service (NOS). Bathymetry was compiled from NOS hydrographic surveys supplemented by hydrographic information from other sources (see index). NOS hydrographic survey data complies with International Hydrographic Organization (IHO) Publication 44 accuracy standards or those used at the date of the surveys. This is a reproduction of a facsimile of the bathymetric manuscript and does not necessarily represent the final publication. This information is not intended for navigational purposes.

Bathymetric Contour Intervals: 10 meters to 200 meter depth, supplemented by 5 meter intervals, thence 50 meters to maximum depth, supplemented by 10 meter intervals.

Datum: Mean Lower Low Water (MLLW).

Universal Transverse Mercator Grid, Zone 7, 10,000 meter ticks (---) are shown inside the headline.

Protraction Diagram data shown in a subdued (screened) block was compiled by the Minerals Management Service (MMS).

THIS MAP IS NOT A LEGAL DOCUMENT for Federal leasing purposes, for such purposes use the MMS Outer Continental Shelf Official Protraction Diagrams.

Heavy lines indicate limits of these protraction diagrams.

HYDROGRAPHIC SURVEY INFORMATION			
SURVEY NUMBER	SURVEY DATE	SURVEY SCALE	SURVEY LINE SPACING (METER FEET)
H-429	1925	1:100,000	30-3.8
H-434	1926	1:200,000	30-1.2
H-459	1930	1:200,000	10-3.0
H-593	1940	1:100,000	10-3.0
H-481	1940	1:100,000	10-1.0
H-664	1940	1:100,000	04-20

OUTER CONTINENTAL SHELF RESOURCE MANAGEMENT MAP

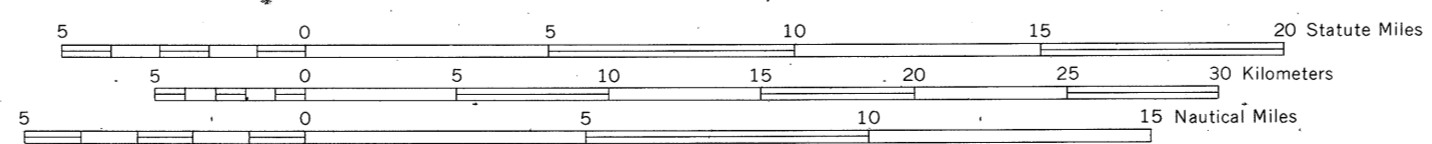
UNITED STATES DEPARTMENT OF COMMERCE
NATIONAL OCEANIC AND ATMOSPHERIC ADMINISTRATION
NATIONAL OCEAN SERVICE

1989

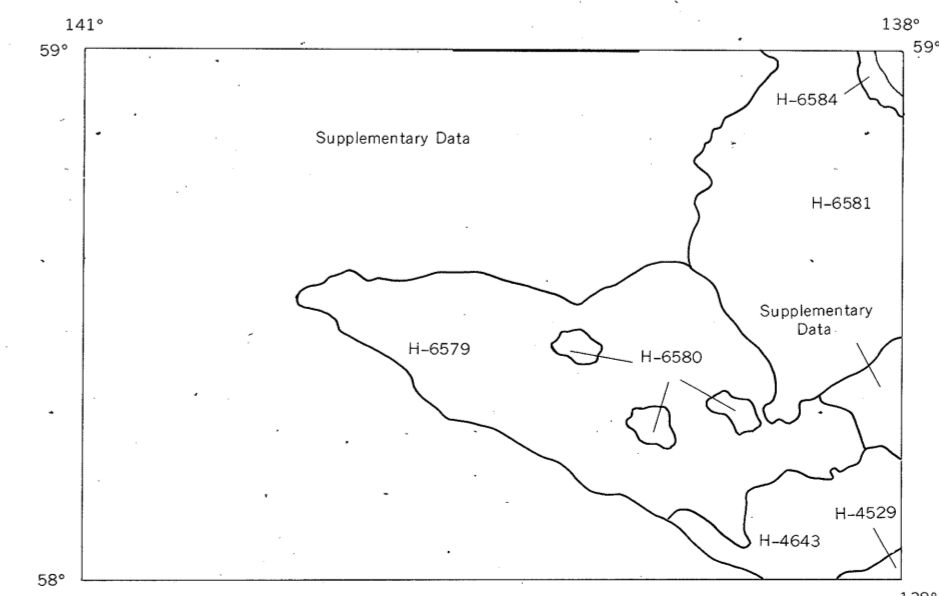
for

UNITED STATES DEPARTMENT OF THE INTERIOR
MINERALS MANAGEMENT SERVICE

TRANSVERSE MERCATOR PROJECTION
Scale 1:250,000

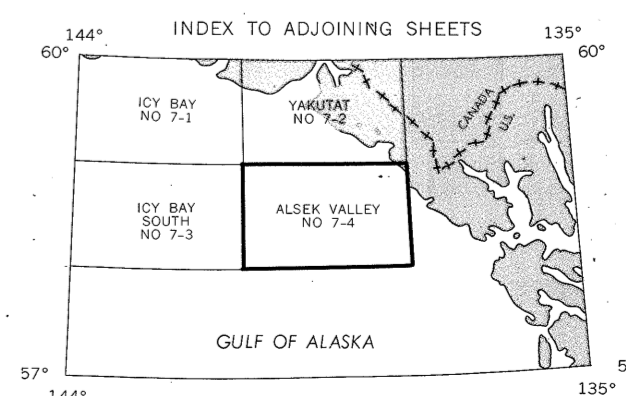


NATIONAL OCEAN SERVICE
HYDROGRAPHIC SURVEY INDEX



ALSEK VALLEY

NOS NO 7-4 (OCS)



Photographic copies of the above and prior surveys may be obtained at the cost of reproduction, by addressing the Director (HQS-243), National Ocean Service, National Oceanic and Atmospheric Administration, Rockville, Maryland 20852.

DRAWING NUMBER
N07-4
Alsek Valley, AK
 PLAN HOLO CORPORATION • IRVINE, CALIFORNIA
 REPRODUCED BY AMBERLEY/STAN
 PRESSION DATE OF PRINT FROM PLAN

DRAWING NUMBER
1:250,000
 PLAN HOLO CORPORATION • IRVINE, CALIFORNIA
 REPRODUCED BY AMBERLEY/STAN
 PRESSION DATE OF PRINT FROM PLAN

DRAWING NUMBER
 PLAN HOLO CORPORATION • IRVINE, CALIFORNIA
 REPRODUCED BY AMBERLEY/STAN
 PRESSION DATE OF PRINT FROM PLAN