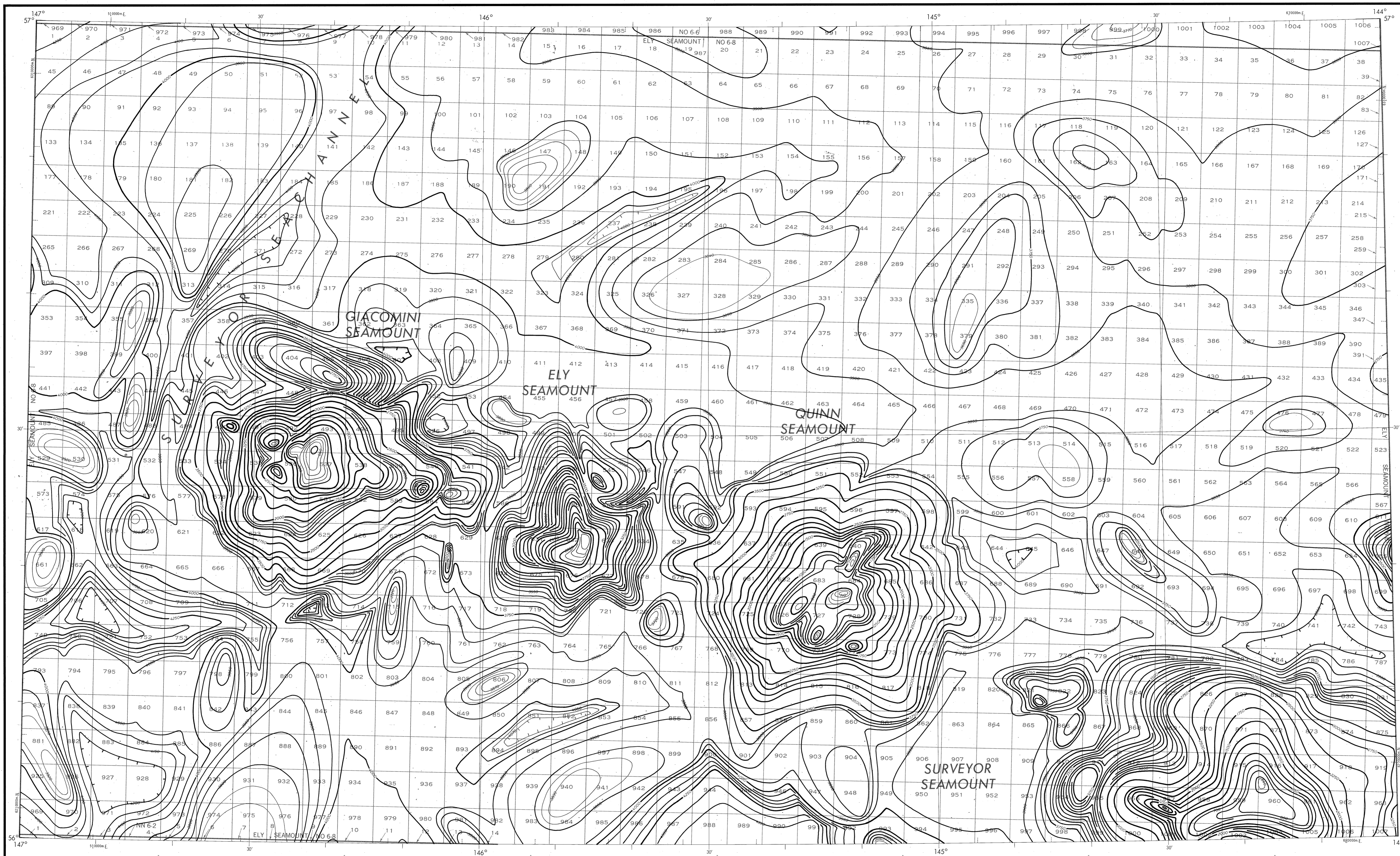


BATHYMETRIC MAP

GULF OF ALASKA
ELY SEAMOUNT



Bathymetry compiled by the National Ocean Service (NOS) from Bathymetric Data other than NOS hydrographic surveys. This is a facsimile reproduction of the bathymetric manuscript and does not necessarily represent the final published form. This information is not intended for navigational purposes.

Bathymetric Contour Intervals: 50 meters to maximum depth, supplemented by 10 meter intervals.

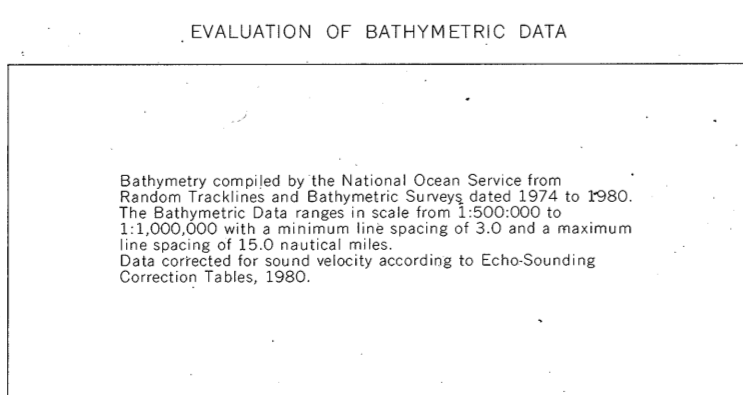
Datum: Mean Lower Low Water (MLLW).

Universal Transverse Mercator Grid, Zone 6; 10,000 meter ticks (---) are shown inside the realine.

Protraction Diagram data shown in a subdued (screened) black was compiled by the Minerals Management Service (MMS).

THIS MAP IS NOT A LEGAL DOCUMENT for Federal leasing purposes; for such purposes use the MMS Outer Continental Shelf Official Protraction Diagrams.

Heavy lines indicate limits of these protraction diagrams.



OUTER CONTINENTAL SHELF RESOURCE MANAGEMENT MAP

UNITED STATES DEPARTMENT OF COMMERCE
NATIONAL OCEANIC AND ATMOSPHERIC ADMINISTRATION
NATIONAL OCEAN SERVICE

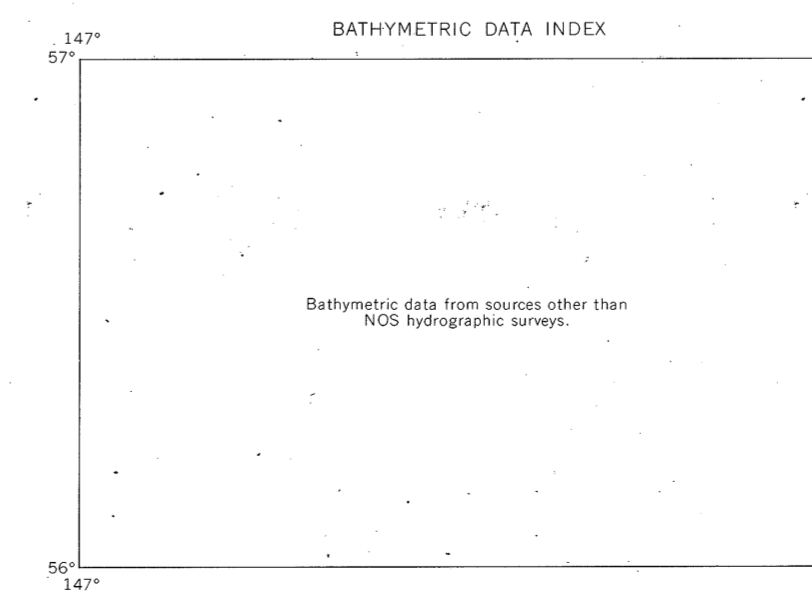
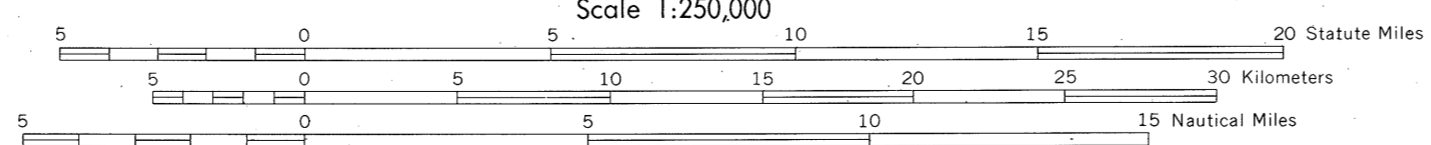
1988

Produced at Washington, D.C.
for

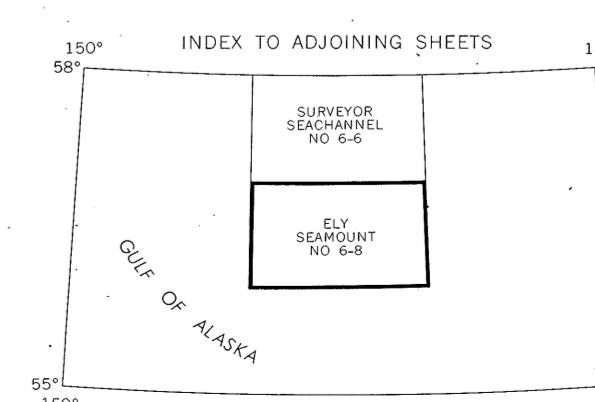
UNITED STATES DEPARTMENT OF THE INTERIOR
MINERALS MANAGEMENT SERVICE

TRANSVERSE MERCATOR PROJECTION

Scale 1:250,000



ELY SEAMOUNT
NOS NO 6-8 (OCS)



UNIBER
DRAWING NUMBER
NOS-8
ELY Seamount, AK
DRAWING NUMBER
1:250,000
DRAWING NUMBER