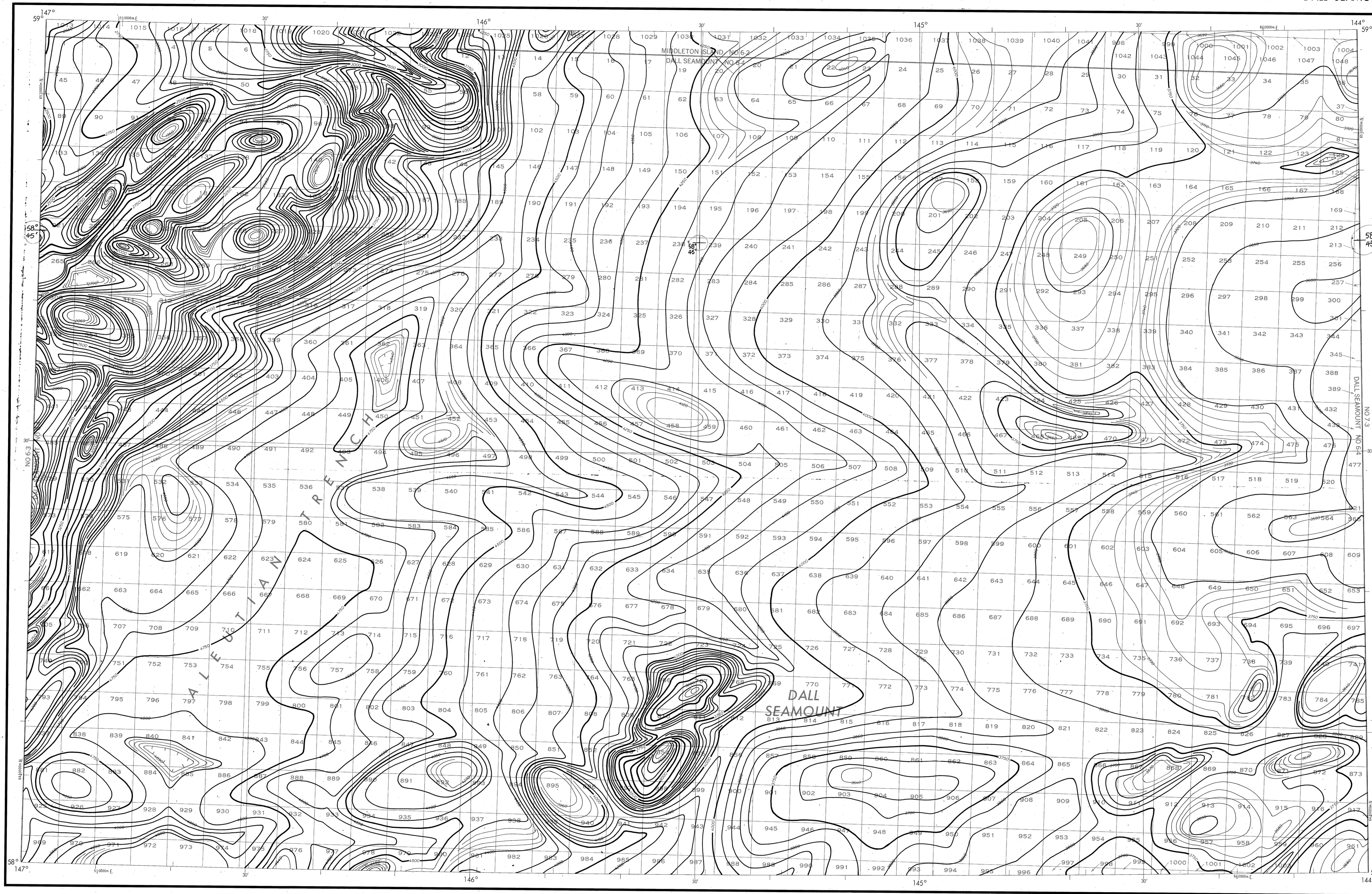


BATHYMETRIC MAP

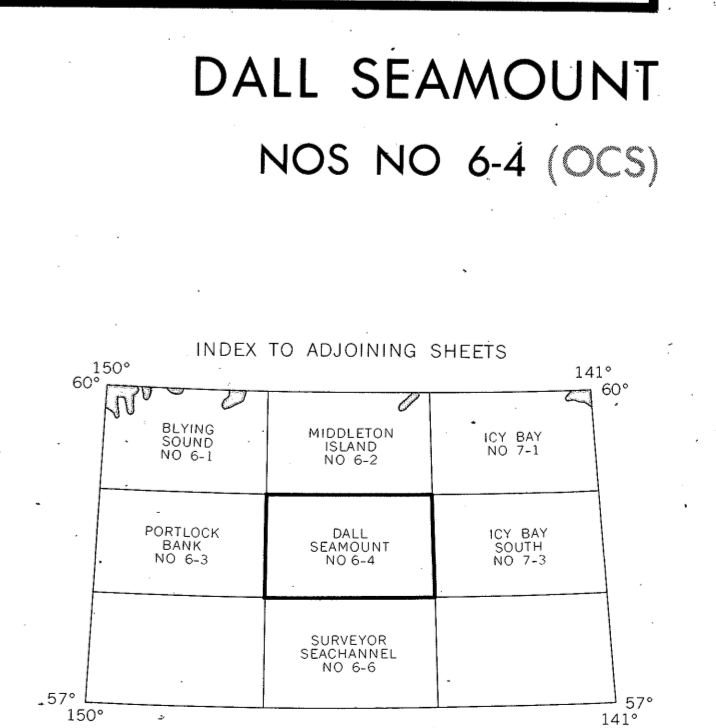
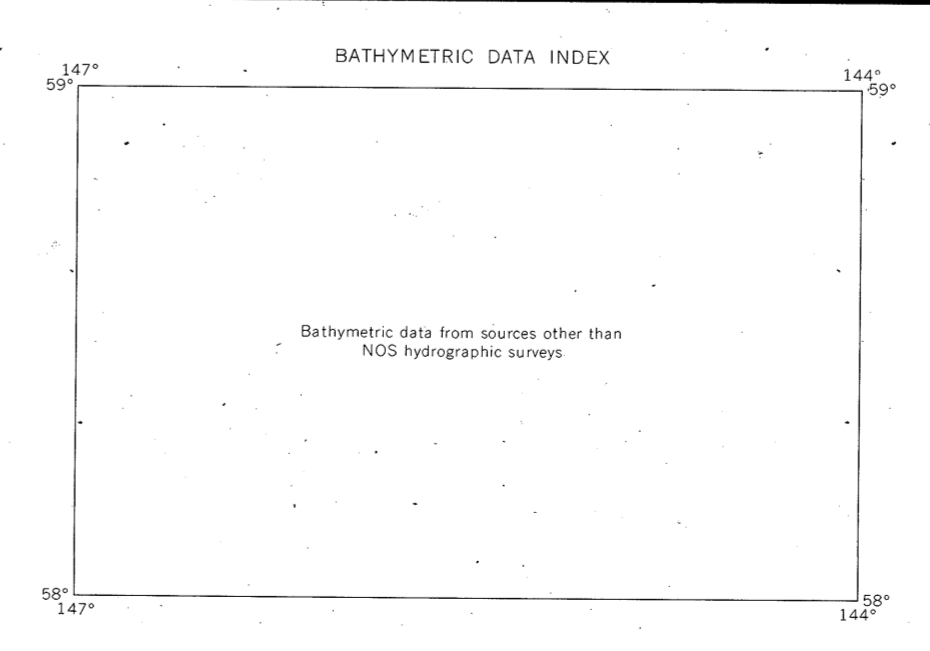
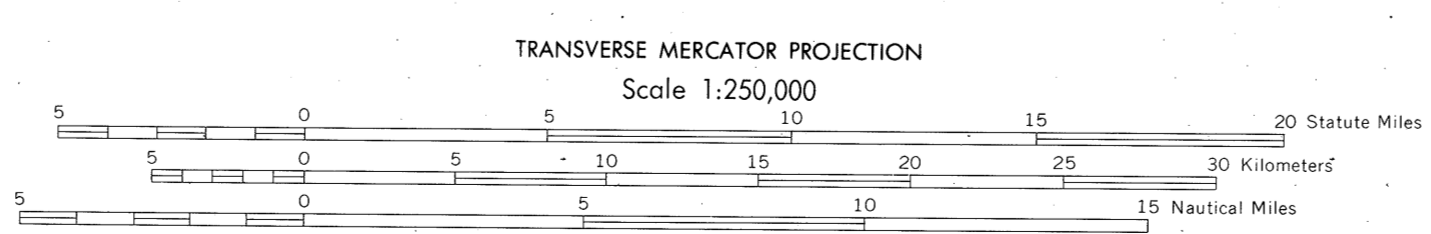
GULF OF ALASKA
DALL SEAMOUNT



Bathymetry compiled by the National Ocean Service (NOS) from bathymetric data other than NOS hydrographic surveys. This is a facsimile reproduction of the bathymetric manuscript and does not necessarily represent the final published form. This information is not intended for navigational purposes.
Bathymetric Contour Intervals: 50 meters to maximum depth, supplemented by 10 meter intervals.
Datum: Mean Lower Low Water (MLLW).
Universal Transverse Mercator Grid. Zone 6; 10,000 meter ticks (—) are shown inside the neckline.
Protraction Diagram data shown in a subdued (screened) block was compiled by the Minerals Management Service (MMS).
THIS MAP IS NOT A LEGAL DOCUMENT for Federal leasing purposes, for such purposes use the MMS Outer Continental Shelf Official Protraction Diagrams.
Heavy lines indicate limits of these protraction diagrams.

EVALUATION OF BATHYMETRIC DATA
Bathymetry compiled by the National Ocean Service from Random Trackings and Bathymetric Surveys dated 1944 to 1980. The bathymetric data ranges in scale from 1:500,000 to 1:100,000 with a maximum line spacing of 1/2 and a maximum line spacing of 1/3 nautical miles. Data corrected for sound velocity according to Echo-Sounding Correction Tables, 1960.

OUTER CONTINENTAL SHELF RESOURCE MANAGEMENT MAP
UNITED STATES DEPARTMENT OF COMMERCE
NATIONAL OCEANIC AND ATMOSPHERIC ADMINISTRATION
NATIONAL OCEAN SERVICE
1988
Produced at Washington, D.C.
for
UNITED STATES DEPARTMENT OF THE INTERIOR
MINERALS MANAGEMENT SERVICE



DRAWING NUMBER
NO 6-4
DALL SEAMOUNT, AK
DRAWING NUMBER
1:250,000
DRAWING NUMBER
DRAWING NUMBER