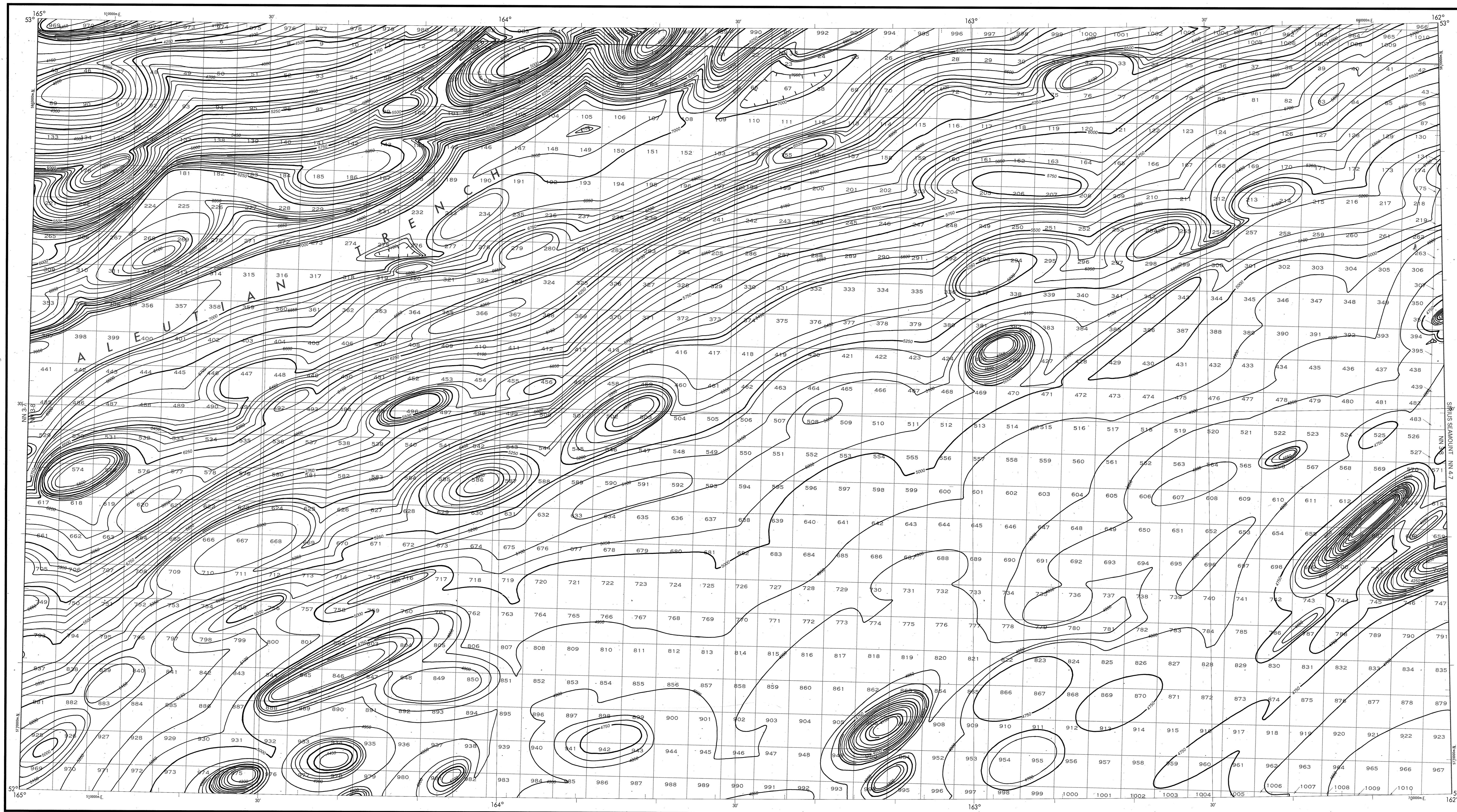


BATHYMETRIC MAP

ALEUTIAN ISLANDS
ALEUTIAN TRENCH



Bathymetry compiled by the National Ocean Service (NOS) from Bathymetric Data other than NOS hydrographic surveys. This is a facsimile reproduction of the bathymetric manuscript and does not necessarily represent the final published form. This information is not intended for navigational purposes.
Bathymetric Contour Interval: 50 meters to maximum depth.
Universal Transverse Mercator Grid. Zone 3; 10,000 meter ticks (—) are shown inside the coastline.
Protraction Diagram data shown in subeud (screened) block was compiled by the Minerals Management Service (MMS).
THIS MAP IS NOT A LEGAL DOCUMENT for Federal leasing purposes; for such purposes use the MMS Outer Continental Shelf Official Protraction Diagrams.
Heavy line(s) indicate limits of these protraction diagrams.

EVALUATION OF BATHYMETRIC DATA
Bathymetry compiled by the National Ocean Service from Random Facsimiles and Bathymetric Surveys dated 1944 to 1974. The Bathymetric Data ranges in scale from 1:500,000 to 1:1,000,000 with a minimum line spacing of 3.0 and a maximum line spacing of 15.0 meters.
Data compiled for sound velocity according to Echo-Sounding Correction Tables, 1960.

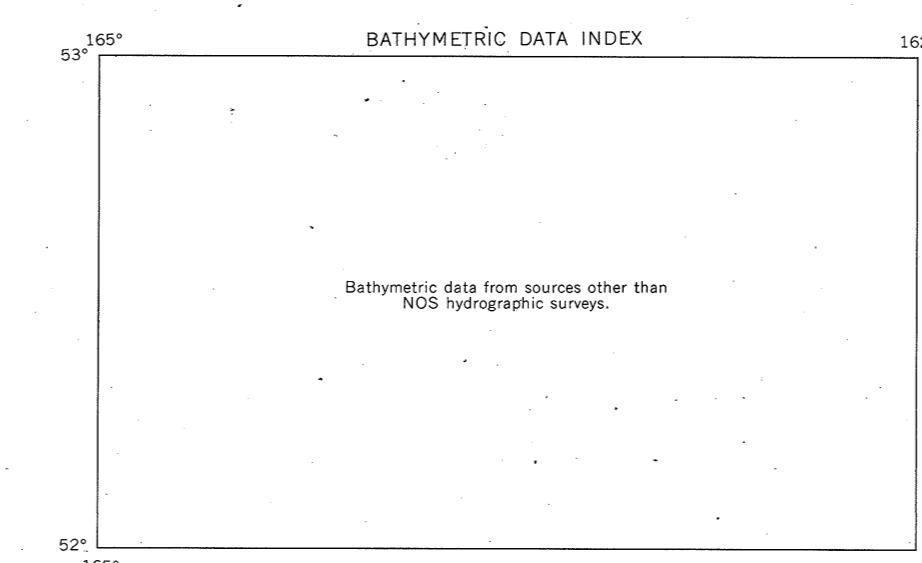
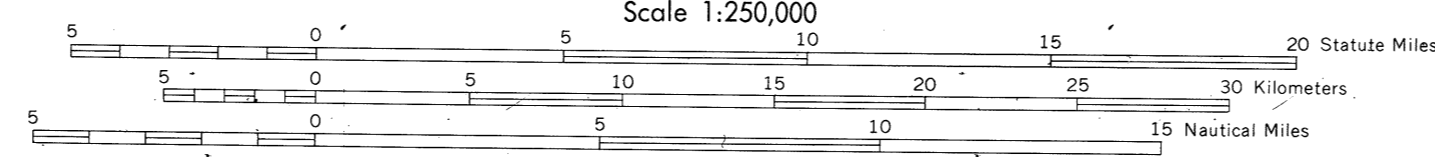
OUTER CONTINENTAL SHELF RESOURCE MANAGEMENT MAP

UNITED STATES DEPARTMENT OF COMMERCE
NATIONAL OCEANIC AND ATMOSPHERIC ADMINISTRATION
NATIONAL OCEAN SERVICE

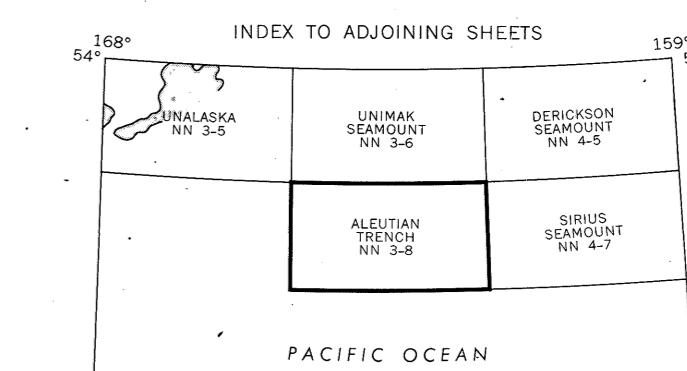
1985
Produced at Washington, D.C.

UNITED STATES DEPARTMENT OF THE INTERIOR
MINERALS MANAGEMENT SERVICE

TRANSVERSE MERCATOR PROJECTION
Scale 1:250,000



ALEUTIAN TRENCH
NOS NN 3-8 (OCS)



DRAWING NUMBER
NH 3-8
Aleutian Trench, AK
DRAWING NUMBER
1:250,000
DRAWING NUMBER