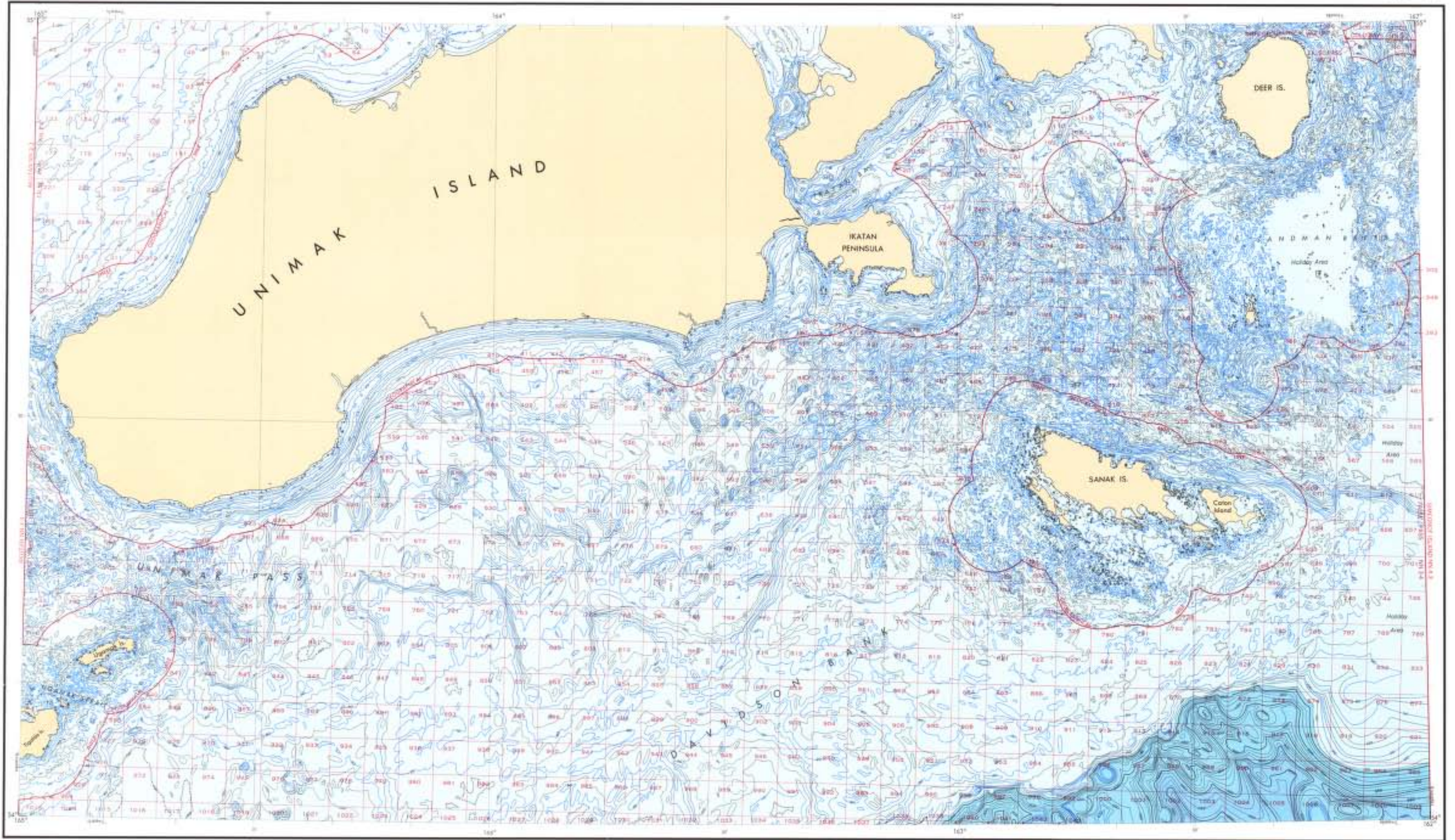


BATHYMETRIC MAP



Base map information including bathymetry was compiled by the National Ocean Service (NOS). Bathymetry compiled from NOS hydrographic survey data, supplemented by other hydrographic sources (see notes). NOS hydrographic survey data compiled with International Hydrographic Organization (IHO) Special Publication 44 conformity reported on those parts of this data set of the survey. This information is not intended for navigational purposes. Universal Transverse Mercator Grid, Zone 5, 18Q, where Ticks 1-1 are shown inside the coastline.

Offshore production contours shown in red, compiled by the Minerals Management Service. Heavy lines indicate limits of MMS Data. Continental Shelf Official Production Diagram. The procedures on this map are not for Federal (leasing) purposes, for such purposes refer to the OCS Official Production Diagram available from the Minerals Management Service.



| HYDROGRAPHIC SURVEY INFORMATION |             |
|---------------------------------|-------------|
| DATE                            | DESCRIPTION |
| 1974                            | NOA S-110   |
| 1975                            | NOA S-110   |
| 1976                            | NOA S-110   |
| 1977                            | NOA S-110   |
| 1978                            | NOA S-110   |
| 1979                            | NOA S-110   |
| 1980                            | NOA S-110   |
| 1981                            | NOA S-110   |
| 1982                            | NOA S-110   |
| 1983                            | NOA S-110   |
| 1984                            | NOA S-110   |
| 1985                            | NOA S-110   |
| 1986                            | NOA S-110   |
| 1987                            | NOA S-110   |
| 1988                            | NOA S-110   |
| 1989                            | NOA S-110   |
| 1990                            | NOA S-110   |
| 1991                            | NOA S-110   |
| 1992                            | NOA S-110   |
| 1993                            | NOA S-110   |
| 1994                            | NOA S-110   |
| 1995                            | NOA S-110   |
| 1996                            | NOA S-110   |
| 1997                            | NOA S-110   |
| 1998                            | NOA S-110   |
| 1999                            | NOA S-110   |
| 2000                            | NOA S-110   |
| 2001                            | NOA S-110   |
| 2002                            | NOA S-110   |
| 2003                            | NOA S-110   |
| 2004                            | NOA S-110   |
| 2005                            | NOA S-110   |
| 2006                            | NOA S-110   |
| 2007                            | NOA S-110   |
| 2008                            | NOA S-110   |
| 2009                            | NOA S-110   |
| 2010                            | NOA S-110   |
| 2011                            | NOA S-110   |
| 2012                            | NOA S-110   |
| 2013                            | NOA S-110   |
| 2014                            | NOA S-110   |
| 2015                            | NOA S-110   |
| 2016                            | NOA S-110   |
| 2017                            | NOA S-110   |
| 2018                            | NOA S-110   |
| 2019                            | NOA S-110   |
| 2020                            | NOA S-110   |

Published at Washington, D.C.  
U.S. DEPARTMENT OF COMMERCE  
NATIONAL OCEANIC AND ATMOSPHERIC ADMINISTRATION  
NATIONAL OCEAN SERVICE  
1984

BATHYMETRIC CONTOUR INTERVALS: 10 METERS TO 300-METER DEPTH,  
SUPPLEMENTED BY 2-METER INTERVALS, THENCE 50 METERS TO MAXIMUM  
DEPTH, SUPPLEMENTED BY 10-METER INTERVALS.

DAKUM - MEAN LOWER LOW WATER

TRANSVERSE MERCATOR PROJECTION  
Scale 1:250,000

