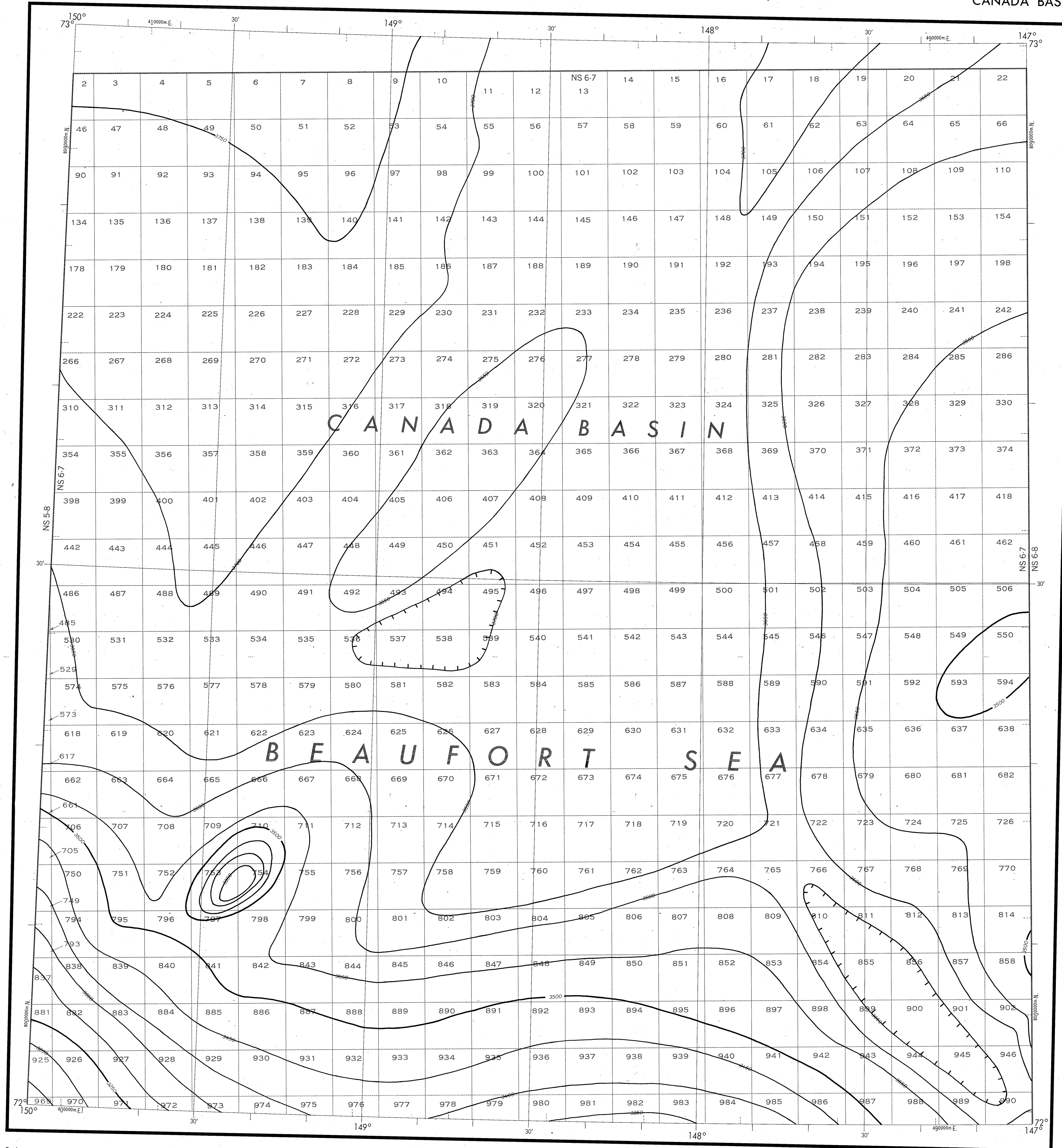


BATHYMETRIC MAP

BEAUFORT SEA
CANADA BASIN



Bathymetry compiled by the National Ocean Service (NOS) from Bathymetric Data other than NOS hydrographic surveys. This is a facsimile reproduction of the bathymetric manuscript and does not necessarily represent the final publication. This information is not intended for navigational purposes.

Bathymetric Contour Interval: 50 meters to maximum depth.
Datum: Mean Lower Low Water (MLLW).
Universal Transverse Mercator Grid, Zone 6; 10,000 meter ticks (---) are shown inside the realine.

Protraction Diagram data shown in a subded (screened) black was compiled by the Minerals Management Service (MMS).
THIS MAP IS NOT A LEGAL DOCUMENT for Federal leasing purposes; for such purposes use the MMS Outer Continental Shelf Official Protraction Diagrams.

Heavy lines(s) indicate limits of these protraction diagrams.

EVALUATION OF BATHYMETRIC DATA

Bathymetry compiled by the National Ocean Service from Random Trackings and Bathymetric Surveys dated 1944 to 1974. The Bathymetric Data ranges in scale from 1:500,000 to 1:1,000,000 with a minimum line spacing of 3.0 and a maximum line spacing of 15.0 nautical miles. Data corrected for sound velocity according to Echo-Sounding Correction Tables, 1980.

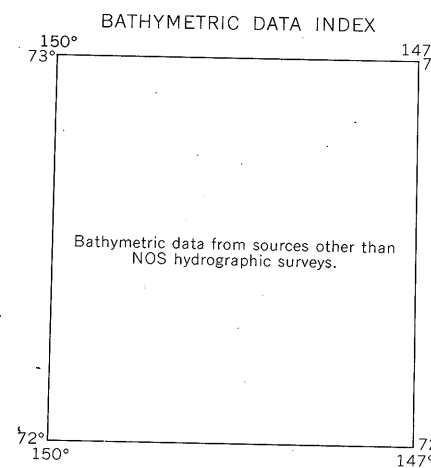
OUTER CONTINENTAL SHELF RESOURCE MANAGEMENT MAP

UNITED STATES DEPARTMENT OF COMMERCE
NATIONAL OCEANIC AND ATMOSPHERIC ADMINISTRATION
NATIONAL OCEAN SERVICE

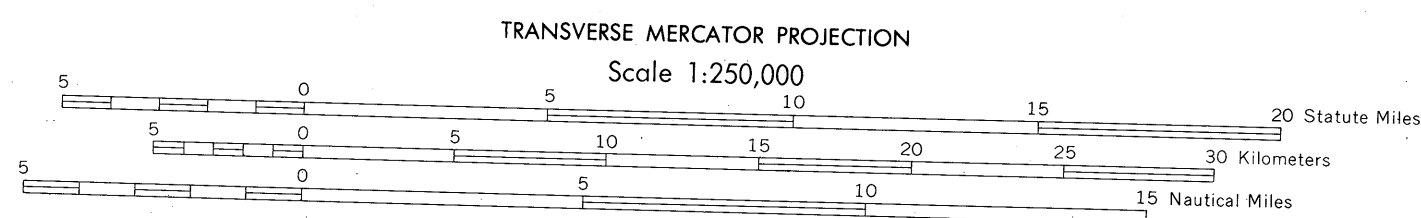
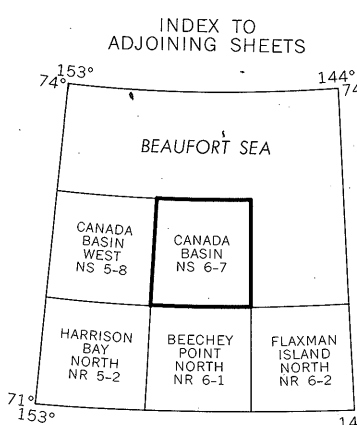
1986

Produced at Washington, D.C.
for

UNITED STATES DEPARTMENT OF THE INTERIOR
MINERALS MANAGEMENT SERVICE



CANADA BASIN
NOS NS 6-7 (OCS)



DRAWING NUMBER
NS 6-7
 CANADA BASIN, AK
 DRAWING NUMBER
1:250,000
 DRAWING NUMBER
 BEAUFORT SEA
 CANADA BASIN
 NOS NS 6-7 (OCS)