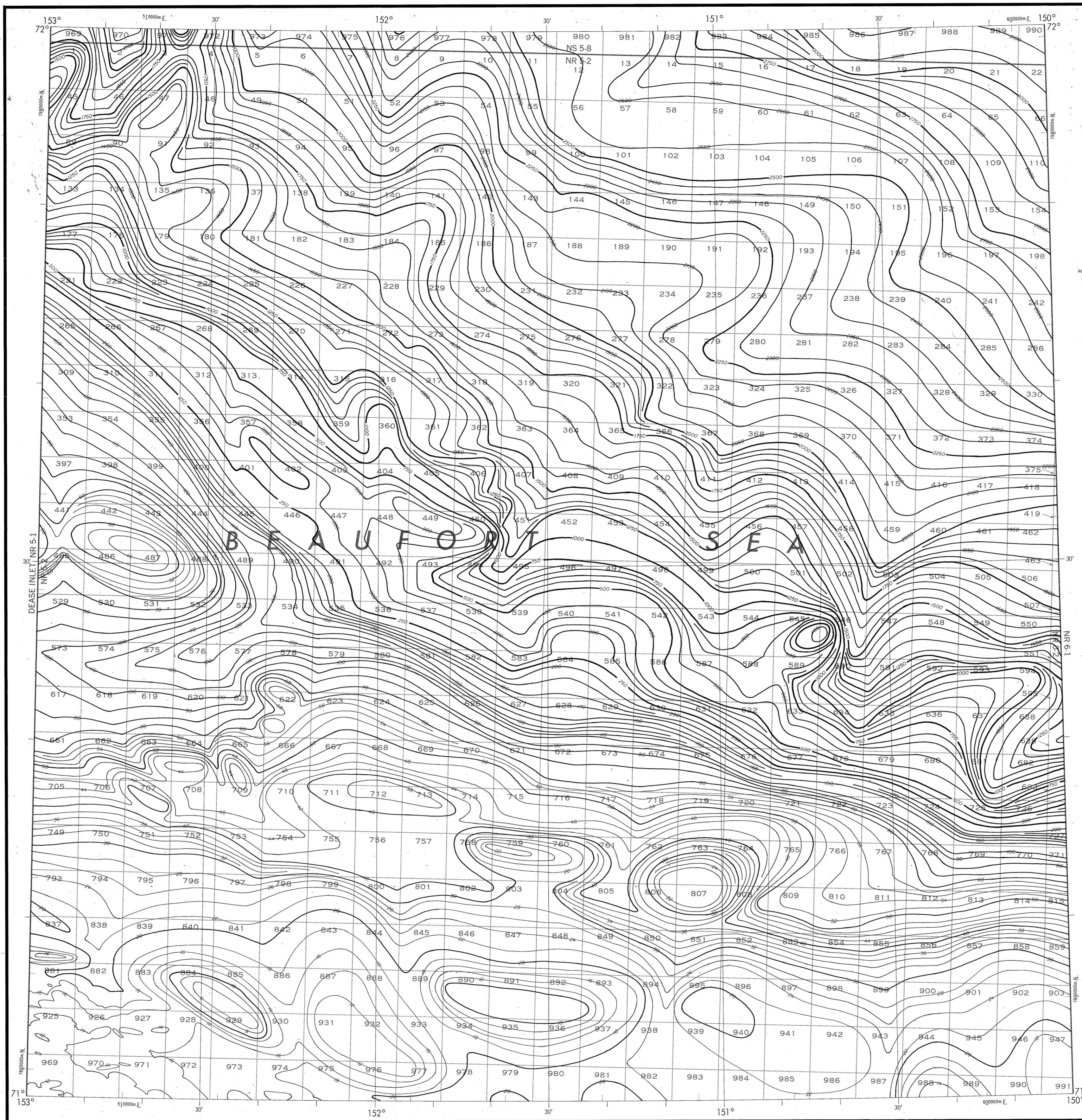


BATHYMETRIC MAP

BEAUFORT SEA
HARRISON BAY NORTH



Base map information including bathymetry was compiled by the National Ocean Service (NOS). Bathymetry was compiled from NOS hydrographic surveys supplemented by hydrographic information from other sources (see index). NOS hydrographic survey data complies with International Hydrographic Organization (IHO) Publication 44 accuracy standards or those used at the date of the surveys. This is a reproduction of a facsimile of the bathymetric manuscript and does not necessarily represent the final publication. This information is not intended for navigational purposes.

Bathymetric Contour Intervals: 10 meters to 200 meter depth, supplemented by 2 meter intervals, thence 50 meters to maximum depth.

Datum: Mean Lower Low Water (MLLW).

Universal Transverse Mercator Grid. Zone 5; 10,000 meter ticks (---) are shown inside the neckline.

Protraction Diagram data shown in a subdued (screened) black was compiled by the Minerals Management Service (MMS).

THIS MAP IS NOT A LEGAL DOCUMENT for Federal leasing purposes; for such purposes use the MMS Outer Continental Shelf Official Protraction Diagrams.

Heavy lines(s) indicate limits of these protraction diagrams.

HYDROGRAPHIC SURVEY INFORMATION			
SURVEY NUMBER	SURVEY DATE	SURVEY SCALE	SURVEY LINE SPACING (NAUT. MILES)
H-7922	1961-63	1:40,000	0.4-2.5

OUTER CONTINENTAL SHELF RESOURCE MANAGEMENT MAP

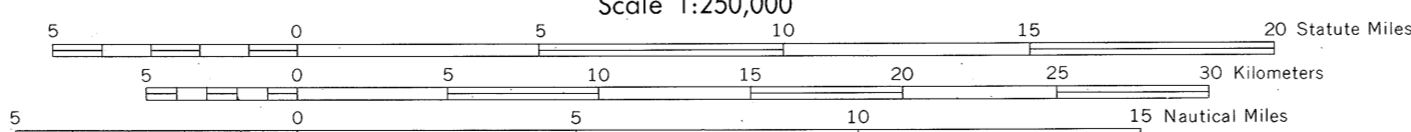
UNITED STATES DEPARTMENT OF COMMERCE
NATIONAL OCEANIC AND ATMOSPHERIC ADMINISTRATION
NATIONAL OCEAN SERVICE

1986

Produced at Washington, D.C.
for

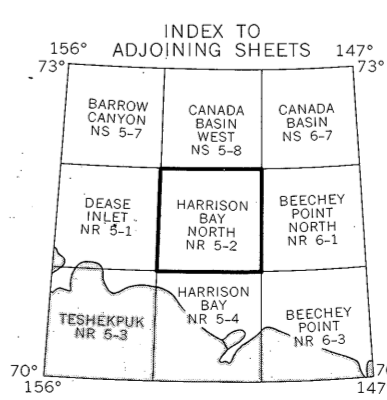
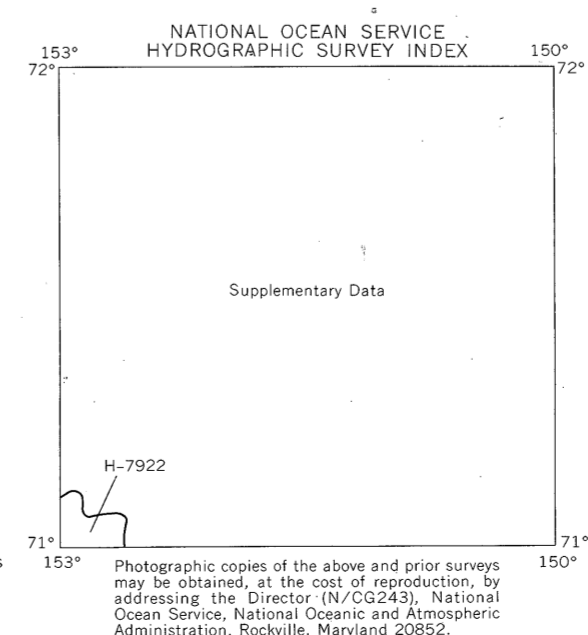
UNITED STATES DEPARTMENT OF THE INTERIOR
MINERALS MANAGEMENT SERVICE

TRANSVERSE MERCATOR PROJECTION
Scale 1:250,000



HARRISON BAY NORTH

NOS NR 5-2 (OCS)



Photographic copies of the above and prior surveys may be obtained, at the cost of reproduction, by addressing the Director (N/CG243), National Ocean Service, National Oceanic and Atmospheric Administration, Rockville, Maryland 20852.

DRAWING NUMBER
 H-7922
 HARRISON BAY NORTH
 PLAN HOLO COORDINATION • IRVING CALDWELL
 REVISIONS BY NUMBER ONLY
 POSITION DATE OF PRINT OR THIS DATE

DRAWING NUMBER
 1:250,000
 PLAN HOLO COORDINATION • IRVING CALDWELL
 REVISIONS BY NUMBER ONLY
 POSITION DATE OF PRINT OR THIS DATE

DRAWING NUMBER
 H-7922
 HARRISON BAY NORTH
 PLAN HOLO COORDINATION • IRVING CALDWELL
 REVISIONS BY NUMBER ONLY
 POSITION DATE OF PRINT OR THIS DATE