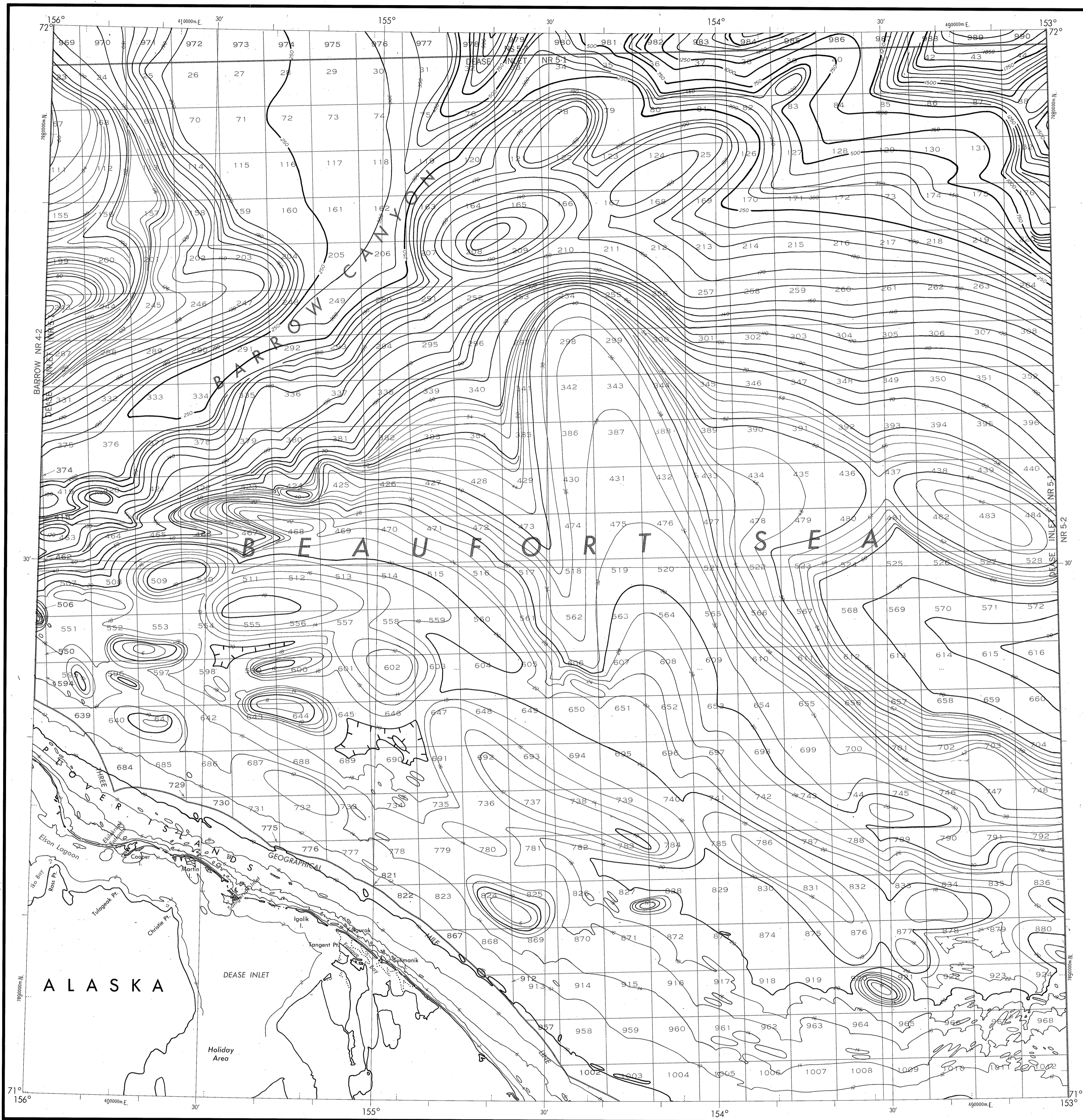


BATHYMETRIC MAP

BEAUFORT SEA
DEASE INLET



Base map information including bathymetry was compiled by the National Ocean Service (NOS). Bathymetry was compiled from NOS hydrographic surveys supplemented by hydrographic information from other sources (see index). NOS hydrographic survey data complies with International Hydrographic Organization (IHO) Publication 44 accuracy standards or those used at the date of the surveys. This is a reproduction of a facsimile of the bathymetric manuscript and does not necessarily represent the final publication. This information is not intended for navigational purposes.

Bathymetric Contour Interval: 10 meters to 200 meter depth, supplemented by 2 meter intervals, thence 50 meters to maximum depth.

Datum: Mean Lower Low Water (MLLW).

Universal Transverse Mercator Grid, Zone 5; 10,000 Meter Ticks (---) are shown inside the neatline.

Protraction Diagram data shown in a subdud (screened) block was compiled by the Minerals Management Service (MMS).

THIS MAP IS NOT A LEGAL DOCUMENT for Federal leasing purposes; for such purposes use the MMS Outer Continental Shelf Official Protraction Diagrams.

Heavy lines(s) indicate limits of these protraction diagrams.

HYDROGRAPHIC SURVEY INFORMATION			
SURVEY NUMBER	SURVEY DATE	SURVEY SCALE	SURVEY LINE SPACING (NAUT. MILES)
H-7071	1945	1:200,000	04-52
H-7072	1945	1:200,000	04-46
H-7073	1945	1:200,000	12-11
H-7859	1960-51	1:400,000	05-70
H-7920	1981-82	1:400,000	05-50
H-7921	1981-82	1:400,000	05-27
H-7922	1981-82	1:400,000	04-25

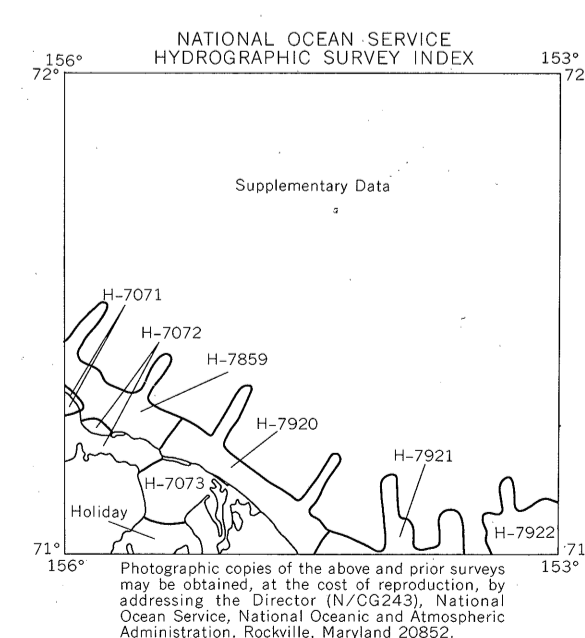
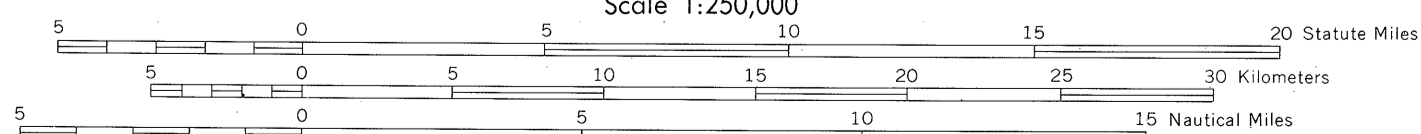
OUTER CONTINENTAL SHELF RESOURCE MANAGEMENT MAP

UNITED STATES DEPARTMENT OF COMMERCE
NATIONAL OCEANIC AND ATMOSPHERIC ADMINISTRATION
NATIONAL OCEAN SERVICE

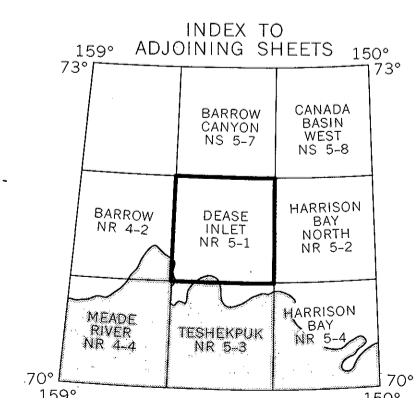
1986
Produced at Washington, D.C.
for

UNITED STATES DEPARTMENT OF THE INTERIOR
MINERALS MANAGEMENT SERVICE

TRANSVERSE MERCATOR PROJECTION
Scale 1:250,000



DEASE INLET NOS NR 5-1 (OCS)



DRAWING NUMBER
MMS-01
Dease Inlet, AK

DRAWING NUMBER
1:250,000

DRAWING NUMBER

DRAWING NUM