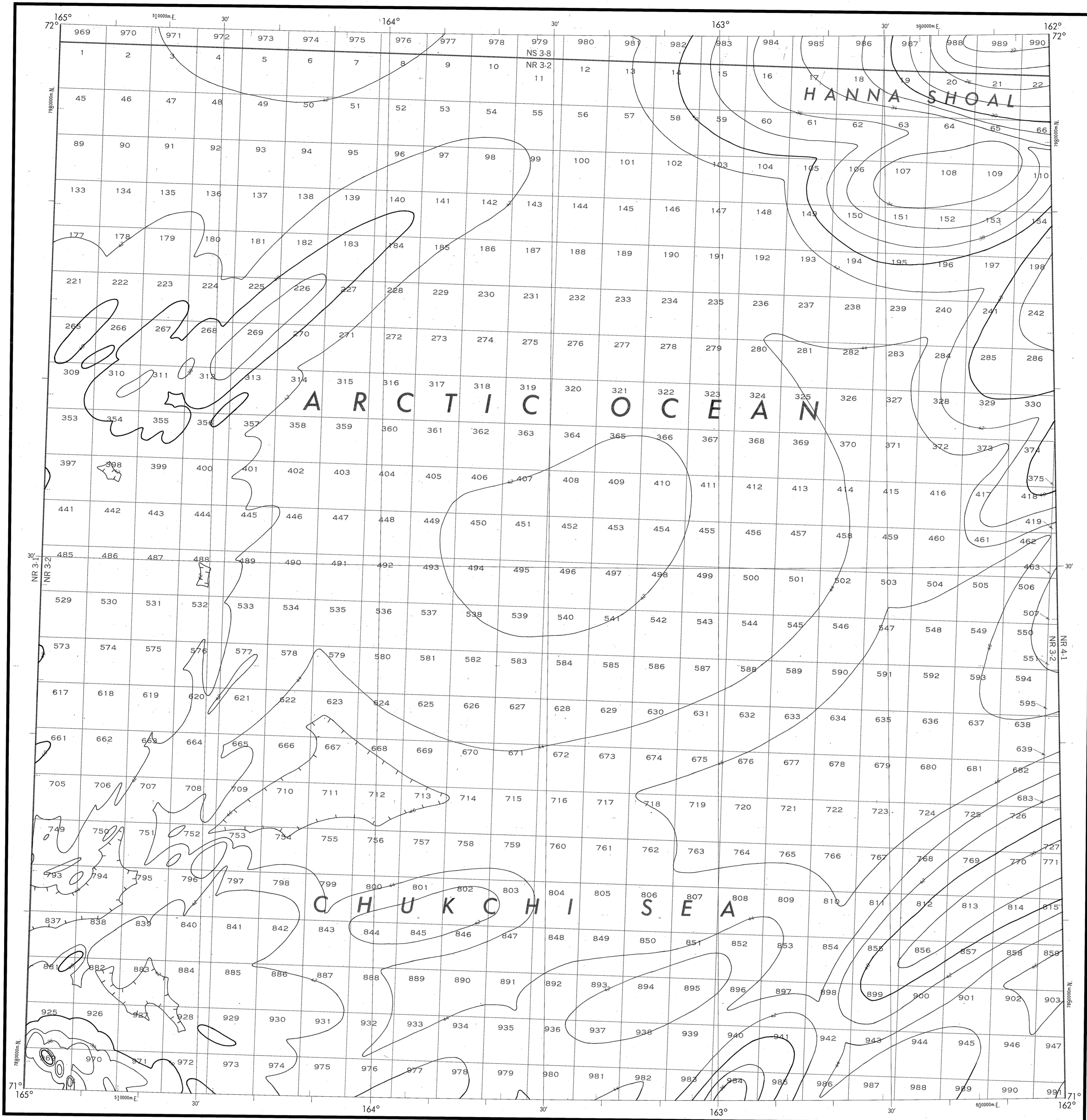


BATHYMETRIC MAP

ARCTIC OCEAN
POSEY



Base map information including bathymetry was compiled by the National Ocean Service (NOS). Bathymetry was compiled from NOS hydrographic surveys supplemented by hydrographic information from other sources (see index). NOS hydrographic survey data complies with International Hydrographic Organization (IHO) Special Publication 44 accuracy standards or those used at the date of the survey. This is a reproduction of a facsimile of the bathymetric manuscript and does not necessarily represent the final publication. This information is not intended for navigational purposes.

Bathymetric Contour Interval: 10 meters to maximum depth, supplemented by 2 meter intervals.

Datum: Mean Lower Low Water (MLLW)

Universal Transverse Mercator Grid, Zone 3; 10,000 meter ticks (---) are shown inside the neatline.

Protraction Diagram data shown in a subdued (screened) black was compiled by the Minerals Management Service (MMS).

THIS MAP IS NOT A LEGAL DOCUMENT for Federal leasing purposes; for such purposes use the MMS Outer Continental Shelf Official Protraction Diagrams.

Heavy lines(s) indicate limits of these protraction diagrams.

| HYDROGRAPHIC SURVEY INFORMATION | | | |
|---------------------------------|-------------|--------------|-----------------------------------|
| SURVEY NUMBER | SURVEY DATE | SURVEY SCALE | SURVEY LINE SPACING (NAUT. MILES) |
| H-8656 | 1962 | 1:100,000 | 20-1.2 |

OUTER CONTINENTAL SHELF RESOURCE MANAGEMENT MAP

UNITED STATES DEPARTMENT OF COMMERCE
NATIONAL OCEANIC AND ATMOSPHERIC ADMINISTRATION
NATIONAL OCEAN SERVICE

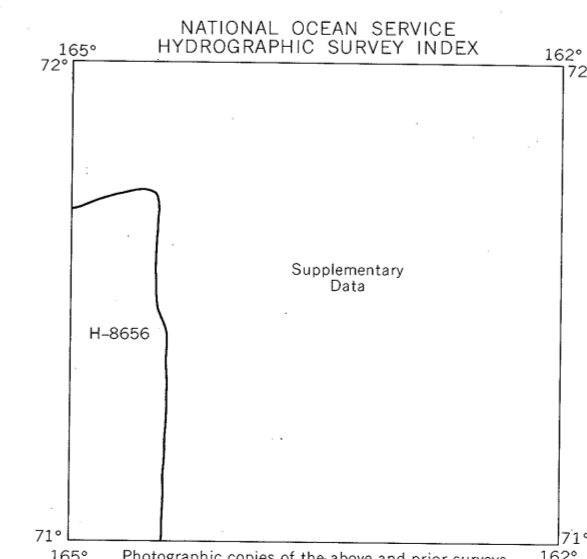
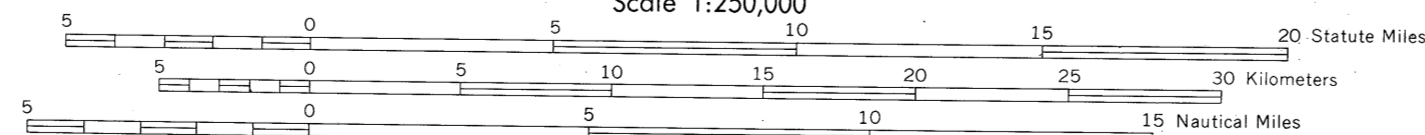
1986

Produced at Washington, D.C.
for

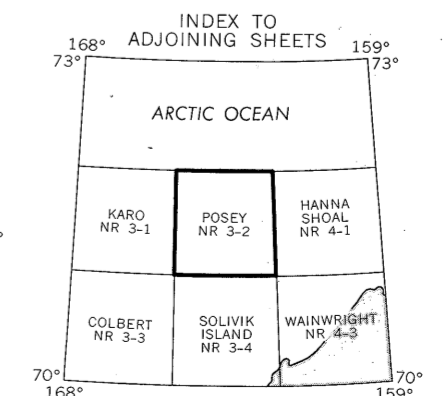
UNITED STATES DEPARTMENT OF THE INTERIOR MINERALS MANAGEMENT SERVICE

TRANSVERSE MERCATOR PROJECTION

Scale 1:250,000



POSEY NOS NR 3-2 (OCS)



DRAWING NUMBER
NR 3-2
POSEY, AK

DRAWING NUMBER
1:250,000

DRAWING NUMBER

DRAWING NUMBER