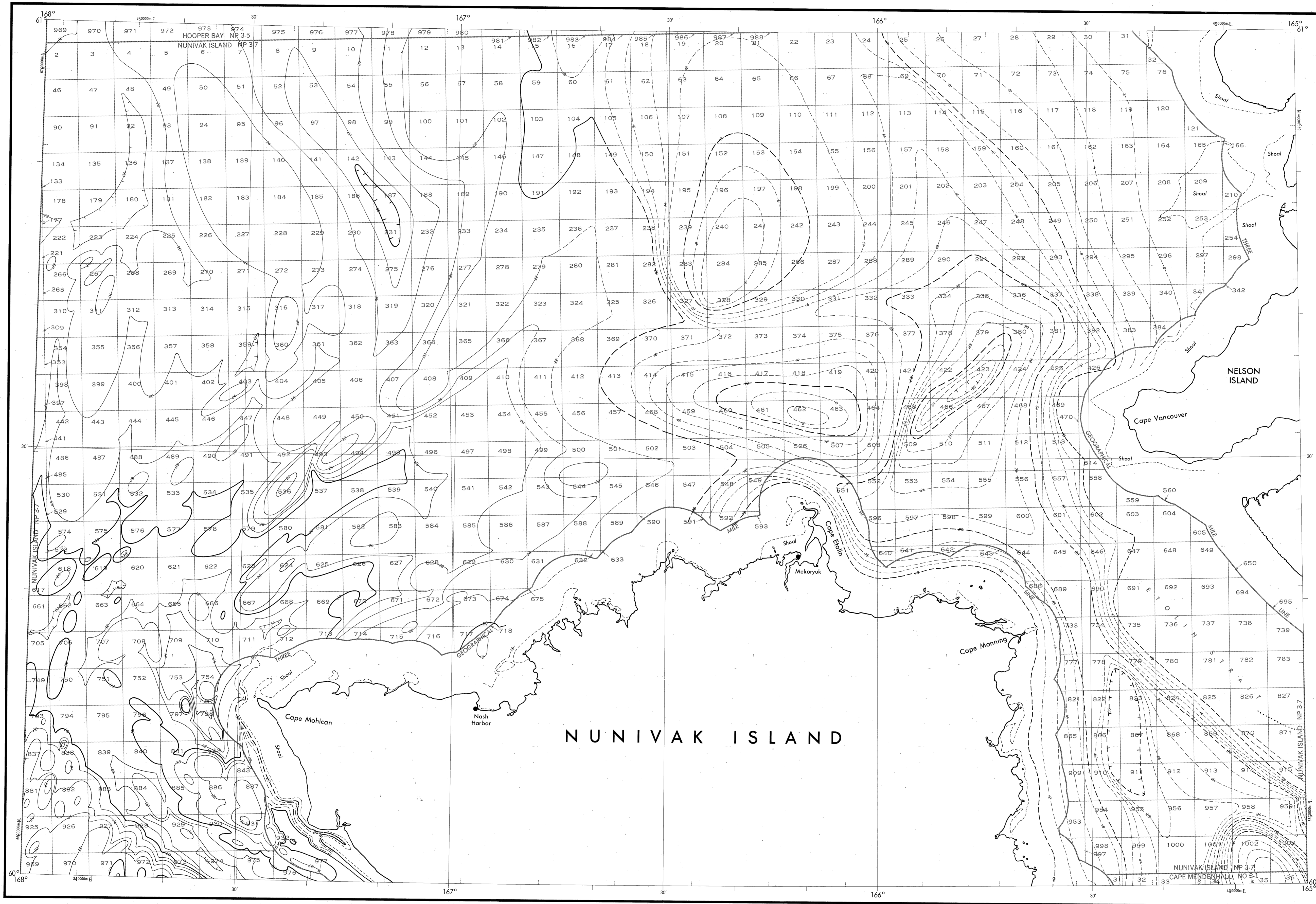


BATHYMETRIC MAP

BERING SEA
NUNIVAK ISLAND



Bathymetry compiled by the National Ocean Service (NOS) from Bathymetric Data other than NOS Hydrographic surveys. This is a facsimile reproduction of the bathymetric manuscript and does not necessarily represent the final published form. This information is not intended for navigational purposes.

Bathymetric Contour Interval: 10 meters to maximum depth, supplemented by 2 meter intervals.

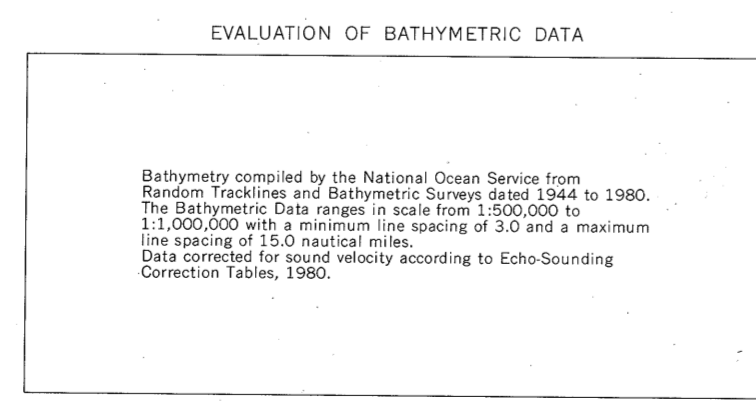
Datum: Mean Lower Low Water (MLLW).

Universal Transverse Mercator Grid, Zone 3; 10,000 meter ticks (—) are shown inside the neoline.

Protraction Diagram data shown in a subdued (screened) block was compiled by the Minerals Management Service (MMS).

THIS MAP IS NOT A LEGAL DOCUMENT for Federal leasing purposes; for such purposes use the MMS Outer Continental Shelf Official Protraction Diagrams.

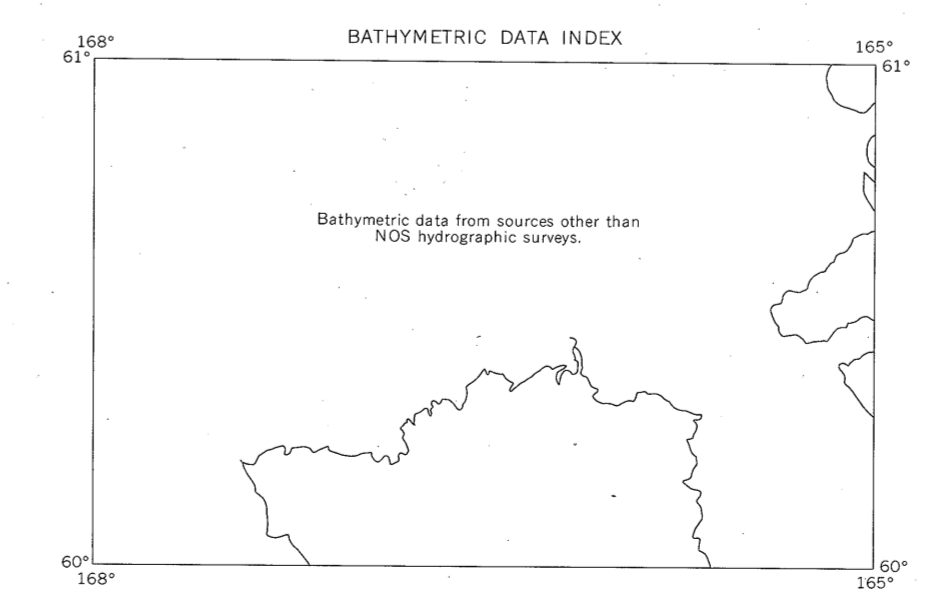
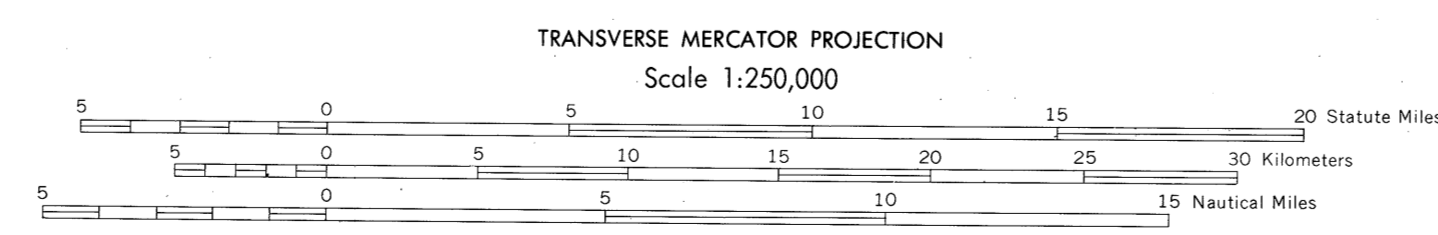
Heavy line(s) indicate limits of these protraction diagrams.



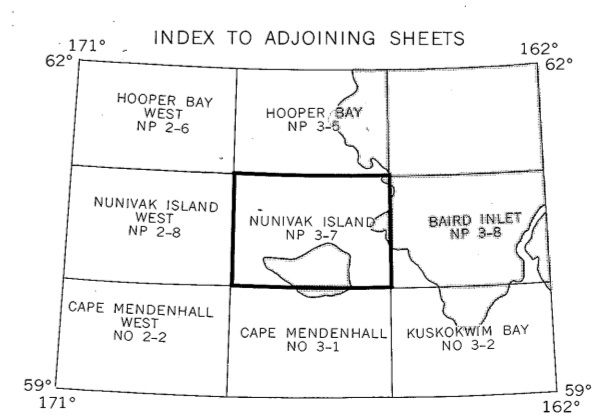
OUTER CONTINENTAL SHELF RESOURCE MANAGEMENT MAP
UNITED STATES DEPARTMENT OF COMMERCE
NATIONAL OCEANIC AND ATMOSPHERIC ADMINISTRATION
NATIONAL OCEAN SERVICE

1989
Produced at Washington, D.C.

for
UNITED STATES DEPARTMENT OF THE INTERIOR
MINERALS MANAGEMENT SERVICE



NUNIVAK ISLAND
NOS NP 3-7 (OC)



DRAWING NUMBER
NP 3-7

DRAWING NUMBER
11 8 89, 000

DRAWING NUMBER
NP 3-7

DRAWING NUMBER
NP 3-7