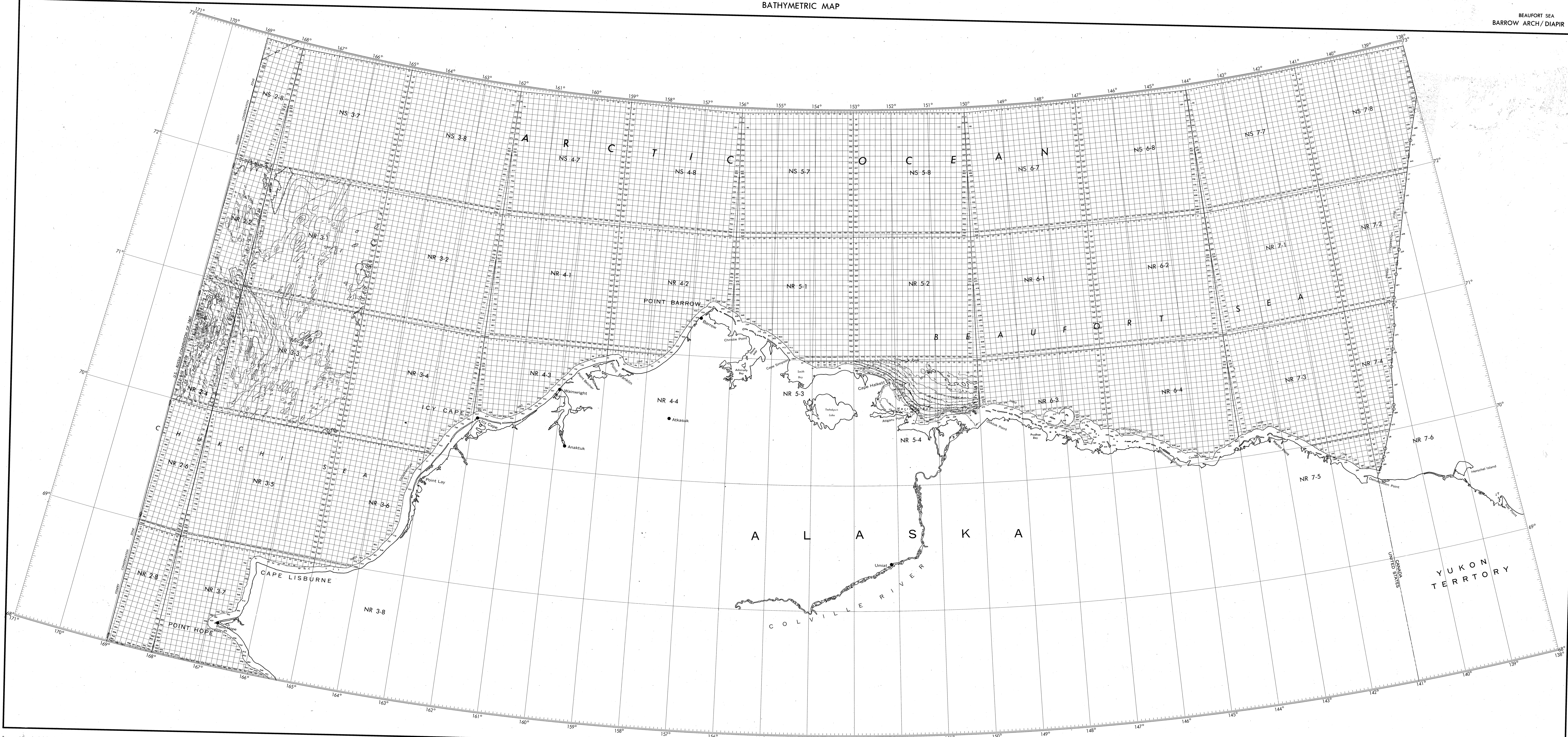


UNITED STATES

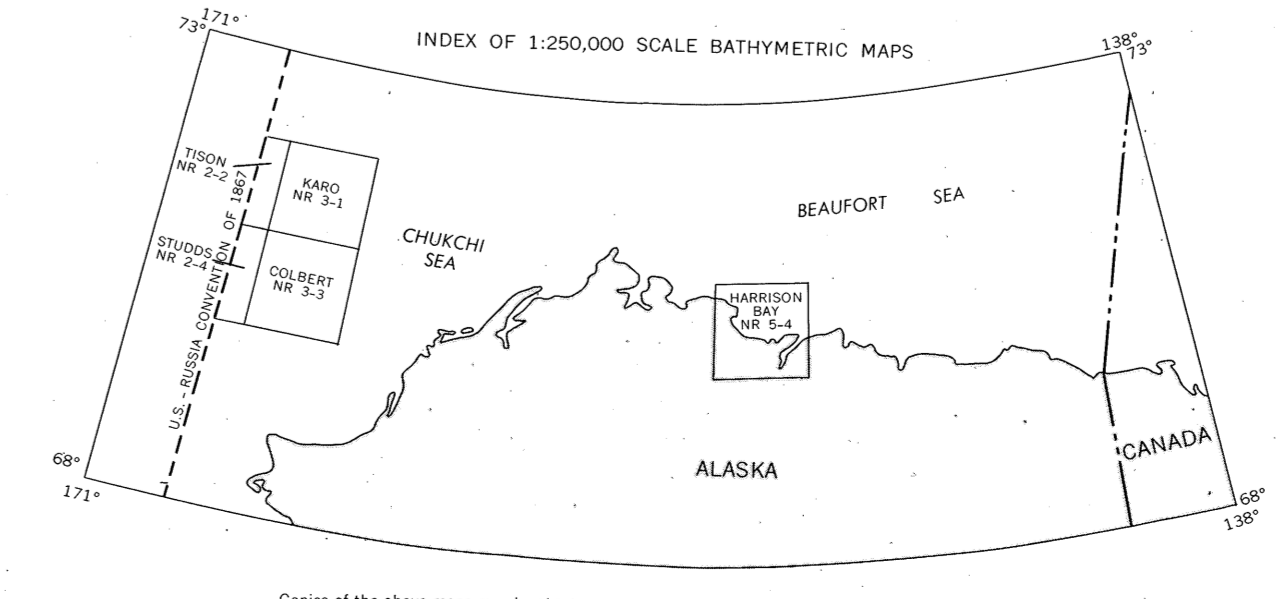
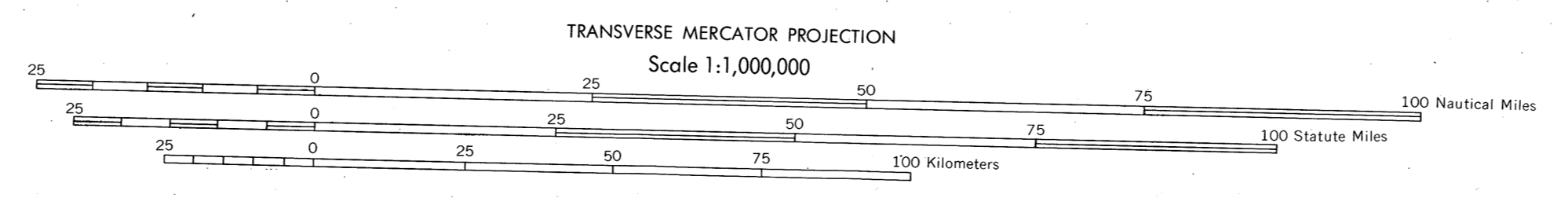
BATHYMETRIC MAP

BEAUFORT SEA
BARROW ARCH/DIAPIR FIELD



Base map information including bathymetry was compiled by the National Ocean Service (NOS). Bathymetry compiled from NOS hydrographic survey data supplemented by hydrographic information from other sources. NOS hydrographic survey data complies with International Hydrographic Organization (IHO) Publication 44 accuracy standards on those used or the date of the survey. Refer to maps shown on the index for specific data information. This is a reproduction of a facsimile of the bathymetric microfilm and does not necessarily represent the final publication. This information is not intended for navigational purposes.
Bathymetric Contour Interval: 10 meters to maximum depth, supplemented by 2 meter intervals.
Datum: Mean Lower Low Water (MLLW).
Projection Diagram data was compiled by the Minerals Management Service (MMS). THIS MAP IS NOT A LEGAL DOCUMENT for Federal leasing purposes, for such purposes use the MMS Outer Continental Shelf Official Projection Diagrams.
Heavy lines indicate limits of these projection diagrams.

OUTER CONTINENTAL SHELF RESOURCE MANAGEMENT MAP
UNITED STATES DEPARTMENT OF COMMERCE
NATIONAL OCEANIC AND ATMOSPHERIC ADMINISTRATION
NATIONAL OCEAN SERVICE
1984
Produced at Washington, D.C.
for
UNITED STATES DEPARTMENT OF THE INTERIOR
MINERALS MANAGEMENT SERVICE



BARROW ARCH/DIAPIR FIELD
REGIONAL MAP