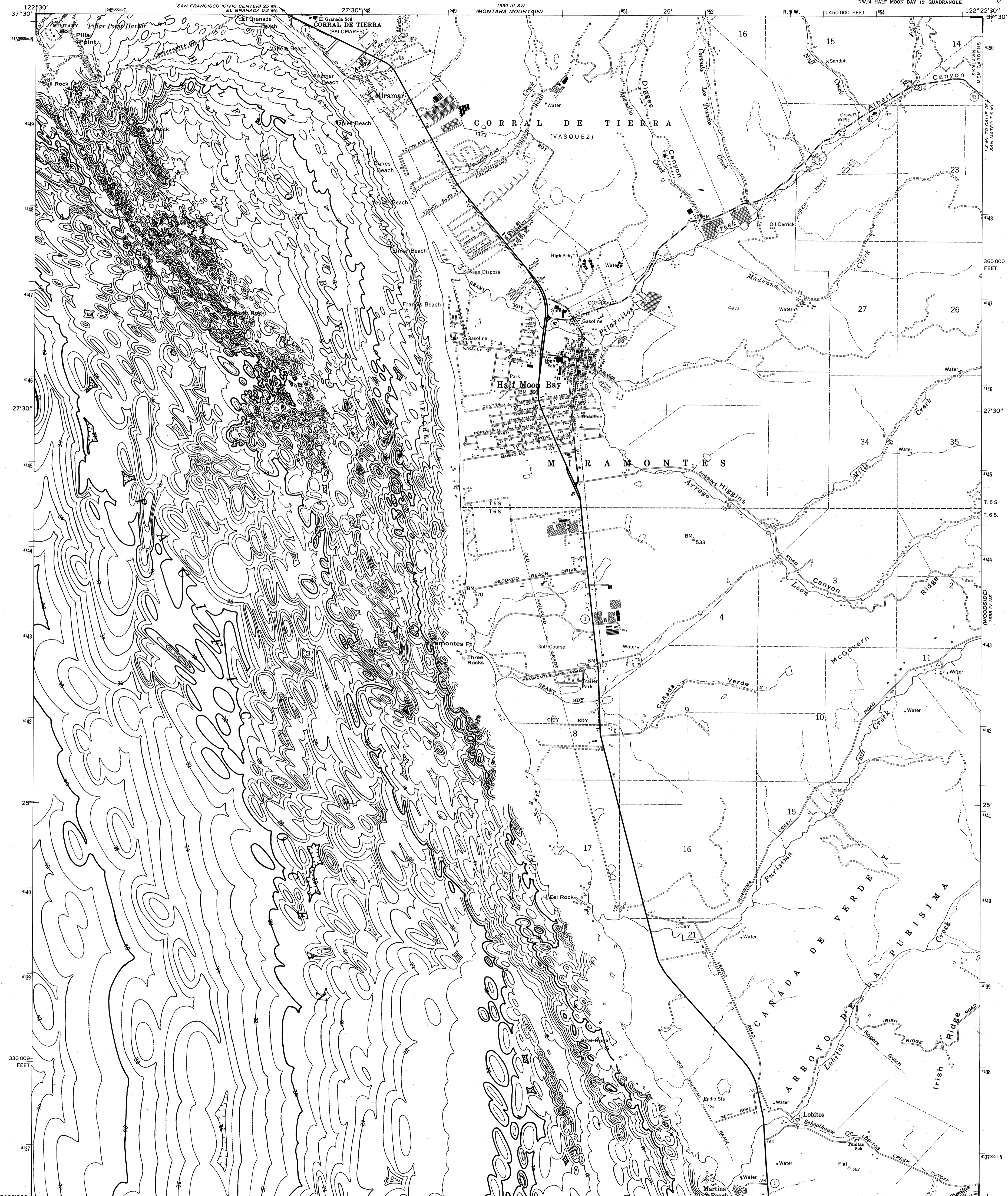


HALF MOON BAY QUADRANGLE  
CALIFORNIA-SAN MATEO CO.  
7.5 MINUTE SERIES (TOPOGRAPHIC)  
NW/4 HALF MOON BAY 15' QUADRANGLE



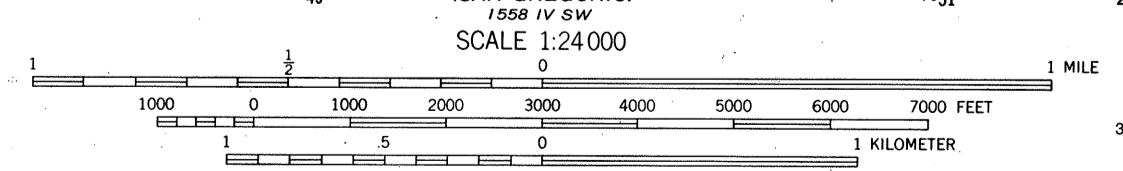
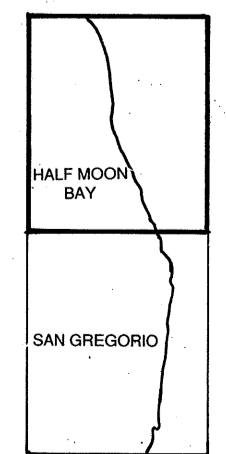
DRAWING NUMBER  
**Half Moon Bay, CA**

DRAWING NUMBER  
**1:24,000**

DRAWING NUMBER

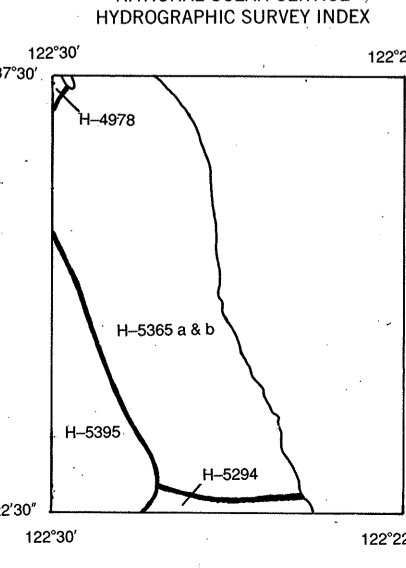
DRAWING NUMBER

Bathymetric contours produced by the National Ocean Service compiled from Hydrographic Surveys.  
Funding support by the California Department of Boating and Waterways.  
Polyconic projection  
10,000-foot grid based on California coordinate system, zone 3  
1000-meter Universal Transverse Mercator grid ticks, zone 10, 1927 North American Datum. To place on the predicted North American Datum 1983 move the projection lines 6 meters north and 96 meters east as shown by dashed corner ticks.



BATHYMETRIC CONTOUR INTERVALS: 2 METERS TO 200 MAXIMUM DEPTH  
SUPPLEMENTED BY 1 METER INTERVALS.

DATUM: MEAN LOWER LOW WATER  
NATIONAL GEODETIC VERTICAL DATUM OF 1929  
BATHYMETRIC SURVEY DATA COMPILES WITH INTERNATIONAL HYDROGRAPHIC ORGANIZATION (IHO) SPECIAL PUBLICATION 44 ACCURACY STANDARDS AND/OR STANDARDS USED AT THE DATE OF THE SURVEY  
SHORELINE SHOWN REPRESENTS THE APPROXIMATE LINE OF MEAN HIGH WATER  
THE RELATIONSHIP BETWEEN THE TWO DATUMS IS VARIABLE  
THE AVERAGE RANGE OF TIDES IS APPROXIMATELY 4 FEET



HYDROGRAPHIC SURVEY INFORMATION

SURVEY NUMBER	SURVEY DATE	SURVEY SCALE	SURVEY LINE SPACING (Nad. Meters)
H-4978	1929	1:10,000	00-07
H-5294	1932	1:10,000	00-10
H-5395 a	1932	1:10,000	00-10
H-5395 b	1932	1:10,000	00-09
H-5395	1933-34	1:40,000	00-51

HALF MOON BAY, CALIF.  
NW/4 HALF MOON BAY 15' QUADRANGLE  
N3722.5-W12222.5/7.5

1961  
PHOTOREVISED 1968 AND 1973  
AMS 1558 IV NW-SERIES V895

UTM GRID AND 1973 MAGNETIC NORTH DECLINATION AT CENTER OF SHEET