

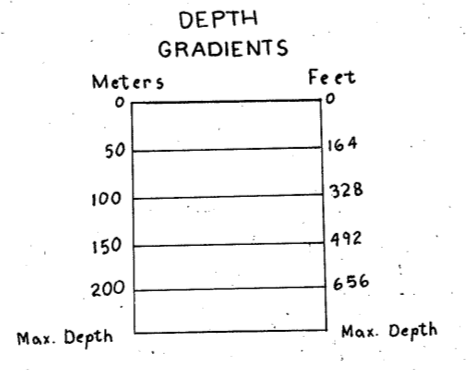
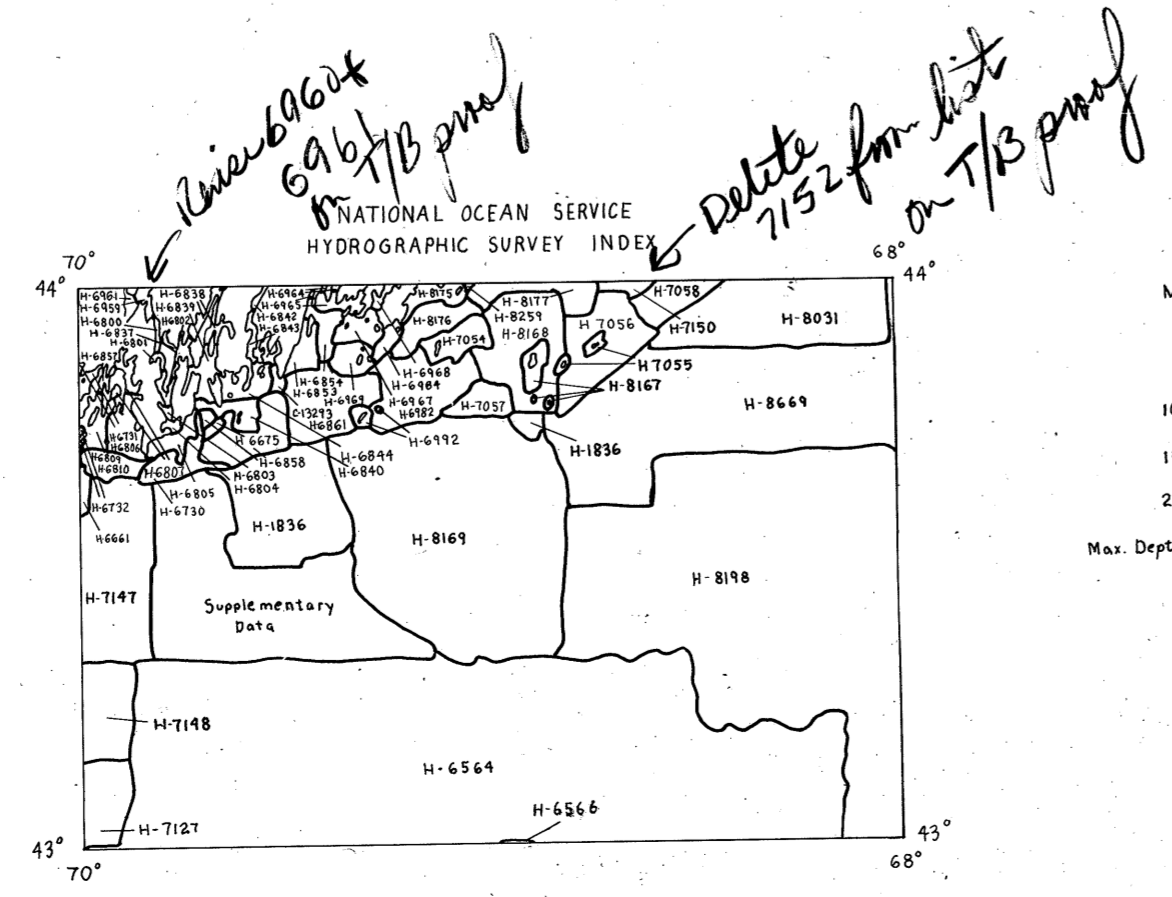
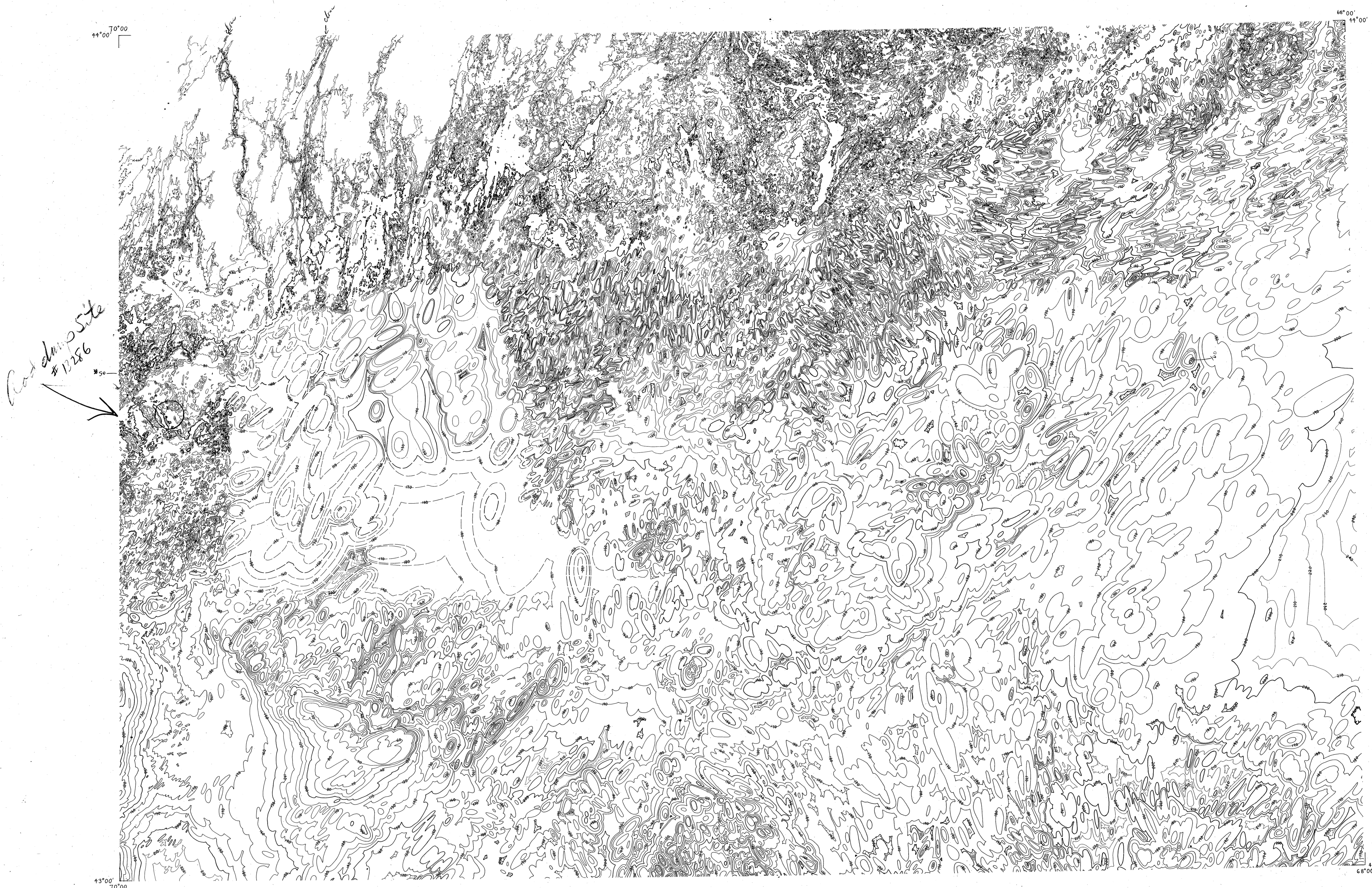
DRAWING NUMBER  
PLAN HOLD CORPORATION • IRVINE, CALIFORNIA  
RECORDED BY NUMBER 07261  
POSITION USE BY PRINT ON FILE

DRAWING NUMBER  
PLAN HOLD CORPORATION • IRVINE, CALIFORNIA  
RECORDED BY NUMBER 07261  
POSITION USE BY PRINT ON FILE

DRAWING NUMBER  
1: 250,000  
PLAN HOLD CORPORATION • IRVINE, CALIFORNIA  
RECORDED BY NUMBER 07261  
POSITION USE BY PRINT ON FILE

DRAWING NUMBER  
NK 19-2  
Bath, ME, NH  
PLAN HOLD CORPORATION • IRVINE, CALIFORNIA  
RECORDED BY NUMBER 07261  
POSITION USE BY PRINT ON FILE

DRAWING NUMBER  
PLAN HOLD CORPORATION • IRVINE, CALIFORNIA  
RECORDED BY NUMBER 07261  
POSITION USE BY PRINT ON FILE



BATHYMETRIC CONTOUR INTERVAL 10 METERS  
DATUM IS MEAN LOW WATER  
BATH, ME. (129)

INDEX TO ADJOINING SHEETS

LEWISTON NL 19-10	BANGOR NL 19-11	EAST BORT NL 19-12
PORTLAND NK 19-1	BATH NK 19-2	JORDAN BASIN NK 19-3
BOSTON NK 19-4	CASHES LEDGES NK 19-5	BROWNS BANK NK 19-6

PRELIMINARY  
COPY  
SUBJECT TO REVIEW/REVISION

BATH NK 19-2

BATH NK 19-2