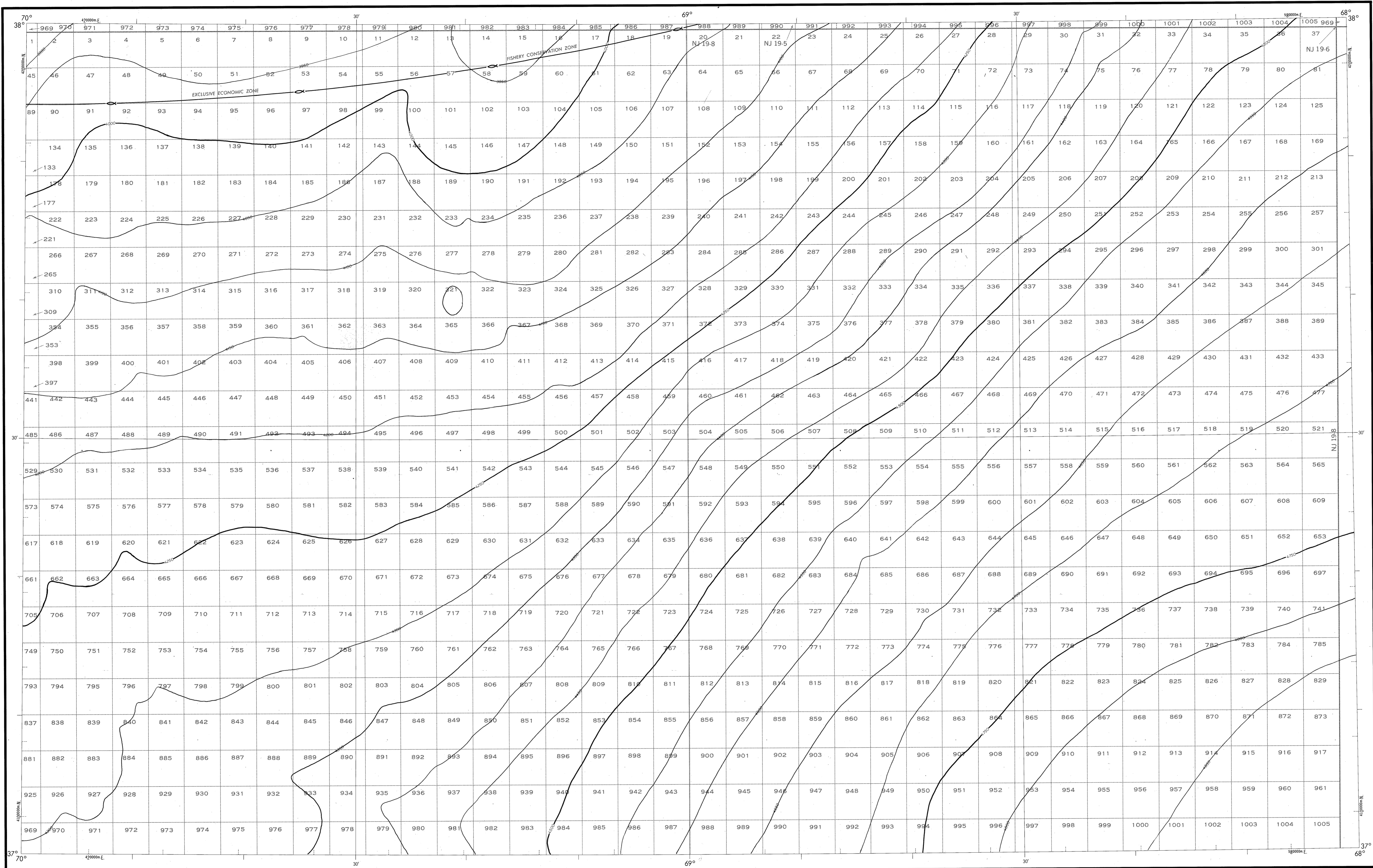


# BATHYMETRIC MAP

ATLANTIC OCEAN  
UCHUPI



Bathymetry compiled by the National Ocean Service (NOS) from Bathymetric Data other than NOS hydrographic surveys. This is a facsimile reproduction of the bathymetric manuscript and does not necessarily represent its final published form. This information is not intended for navigational purposes.

Bathymetric Contour Interval: 50 meters to maximum depth.

Universal Transverse Mercator Grid, Zone 19, 10,000 meter ticks (---) are shown inside the neckline.

Protraction Diagram data shown in subuded [screened] black was compiled by the Minerals Management Service (MMS).

**THIS MAP IS NOT A LEGAL DOCUMENT for Federal leasing purposes, for such purposes use the MMS Outer Continental Shelf Official Protraction Diagrams.**

Heavy line(s) indicate limits of these protraction diagrams.

EVALUATION OF BATHYMETRIC DATA

Bathymetry compiled by the National Ocean Service from Random Tracklines and Bathymetric Surveys dated 1959 to 1974. The Bathymetric Data ranges in scale from 1:500,000 to 1:1,000,000 with a minimum line spacing of 3.0 and a maximum line spacing of 12.0 nautical miles. Data corrected for sound velocity according to Matthews' Tables, 1939.

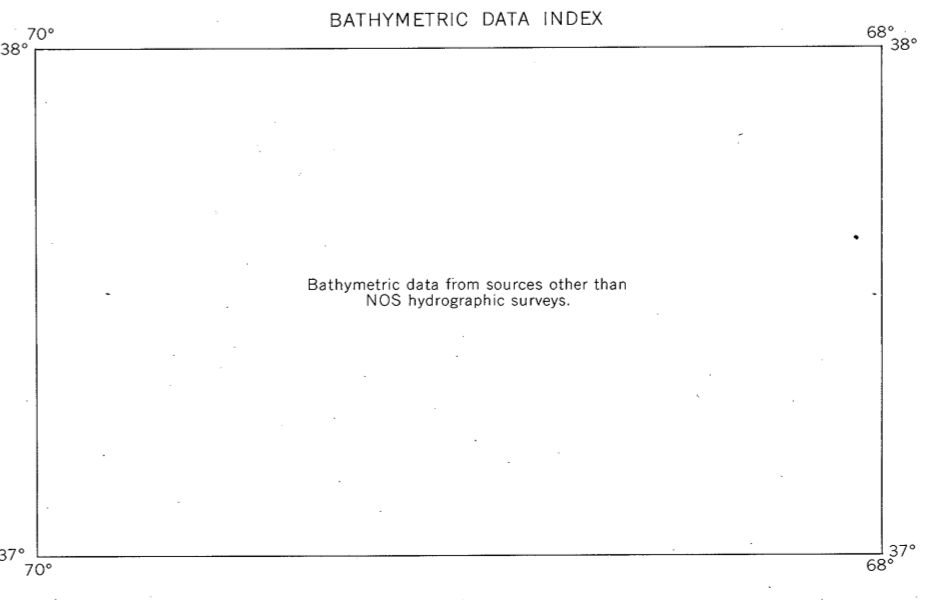
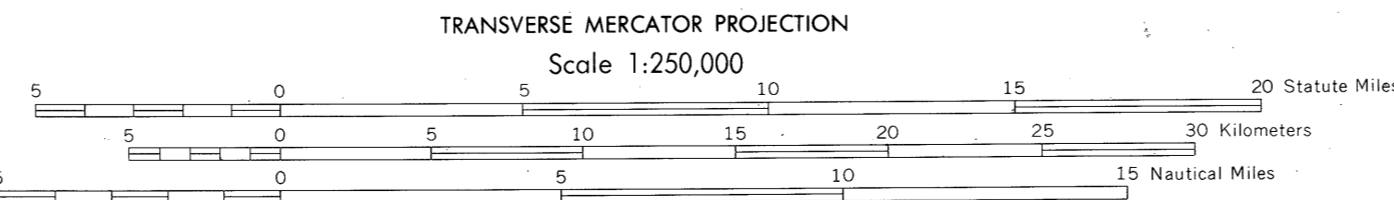
OUTER CONTINENTAL SHELF RESOURCE MANAGEMENT MAP

UNITED STATES DEPARTMENT OF COMMERCE  
NATIONAL OCEANIC AND ATMOSPHERIC ADMINISTRATION  
NATIONAL OCEAN SERVICE

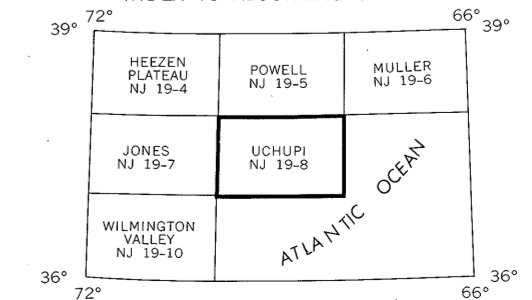
1984  
Produced at Washington, D.C.  
for

UNITED STATES DEPARTMENT OF THE INTERIOR  
MINERALS MANAGEMENT SERVICE

TRANSVERSE MERCATOR PROJECTION  
Scale 1:250,000



UCHUPI  
NOS NJ 19-8 (OCS)



DRAWING NUMBER  
NJ 19-8  
UCHUPI, VA

DRAWING NUMBER  
1:250,000

DRAWING NUMBER

DRAWING NUMBER