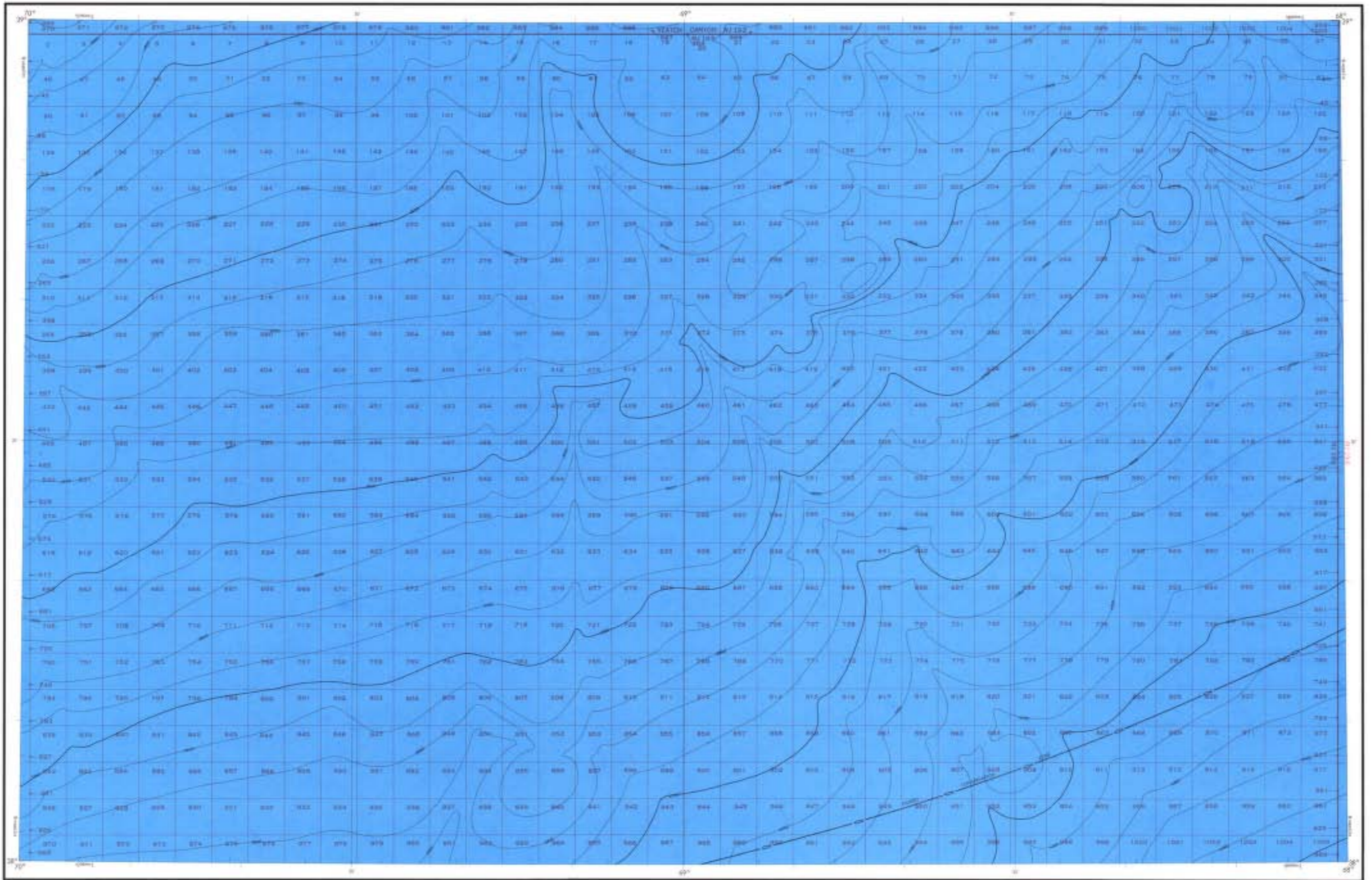


BATHYMETRIC MAP



Bathymetry compiled by the National Ocean Service (NOS) from Bathymetric Data other than NOS bathymetric surveys. This information is not intended for navigational purposes.

Universal Transverse Mercator Grid Zone 18, 1830M Meter Ticks (-) are shown inside the mapline.

Diffuse protection curves data, printed in red, compiled by the Minerals Management Service. Heavy lines indicate limits of MMS Outer Continental Shelf Offshore Protection Diagram. The parameters on this map are not for Federal Laying purposes, for such purposes refer to the OCS Official Protection Diagram available from the Minerals Management Service.

EXPLANATION OF BATHYMETRIC DATA

Bathymetric contours are shown in black. Contours are labeled with depth in meters. Contours are spaced at 50 meter intervals to the maximum depth. Contours are spaced at 100 meter intervals to the maximum depth. Contours are spaced at 200 meter intervals to the maximum depth. Contours are spaced at 500 meter intervals to the maximum depth. Contours are spaced at 1000 meter intervals to the maximum depth. Contours are spaced at 2000 meter intervals to the maximum depth. Contours are spaced at 5000 meter intervals to the maximum depth. Contours are spaced at 10000 meter intervals to the maximum depth.

Published at Washington, D.C.
U.S. DEPARTMENT OF COMMERCE
NATIONAL OCEANIC AND ATMOSPHERIC ADMINISTRATION
NATIONAL OCEAN SERVICE
1983
BATHYMETRIC CONTOUR INTERVALS- 50 METERS TO MAXIMUM DEPTH



POWELL
NOS NJ 19-5

