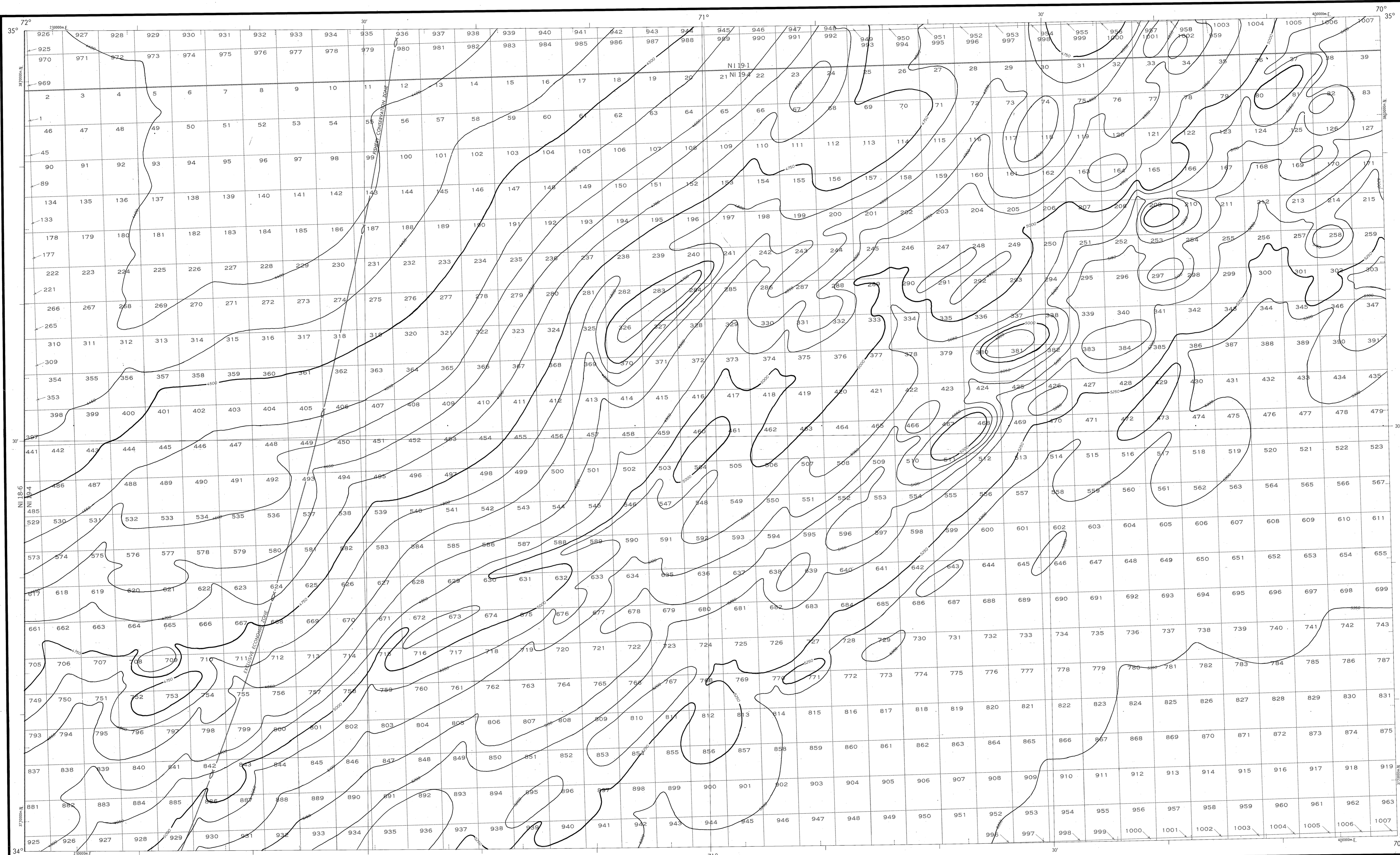


BATHYMETRIC MAP

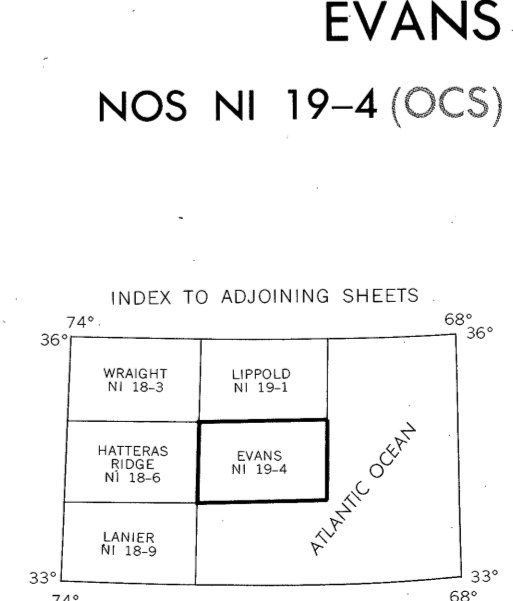
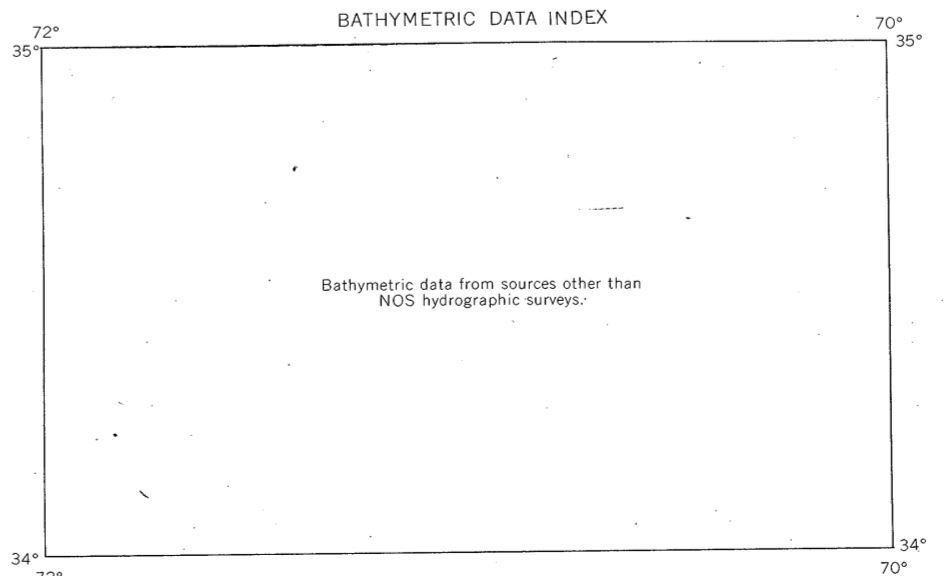
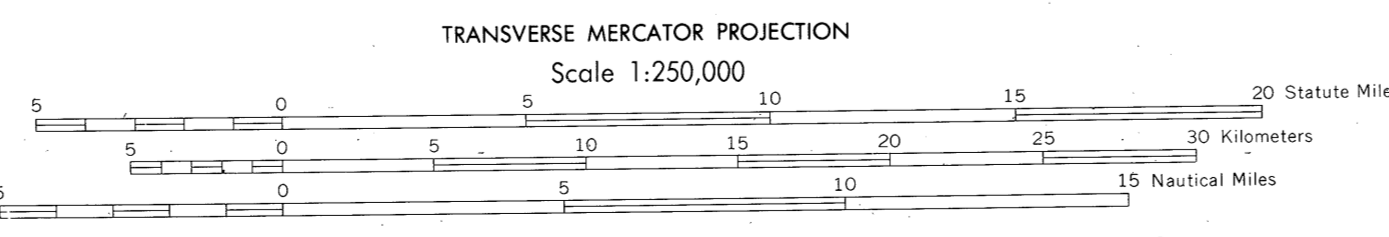
ATLANTIC OCEAN
EVANS



Bathymetry compiled by the National Ocean Service (NOS) from Bathymetric Data other than NOS hydrographic surveys. This is a facsimile reproduction of the bathymetric manuscript and does not necessarily represent its final published form. This information is not intended for navigational purposes.
Bathymetric Contour Interval: 50 meters to maximum depth.
Universal Transverse Mercator Grid, Zone 19, 10,000 meter ticks (—) are shown inside the rectangle.
Pretraction Diagram data shown in subbed (screened) block was compiled by the Minerals Management Service (MMS).
THIS MAP IS NOT A LEGAL DOCUMENT for Federal leasing purposes; for such purposes use the MMS Outer Continental Shelf Official Pretraction Diagrams.
Heavy line(s) indicate limits of these pretraction diagrams.

EVALUATION OF BATHYMETRIC DATA
Bathymetry compiled by the National Ocean Service from Random Trackings and Bathymetric Surveys dated 1959 to 1974. The bathymetric data range in scale from 1:500,000 to the spacing of 25.0 nautical miles. Data corrected for speed velocity according to Matthews' Tables, 1939.

OUTER CONTINENTAL SHELF RESOURCE MANAGEMENT MAP
UNITED STATES DEPARTMENT OF COMMERCE
NATIONAL OCEANIC AND ATMOSPHERIC ADMINISTRATION
NATIONAL OCEAN SERVICE
1984
Produced at Washington, D.C.
for
UNITED STATES DEPARTMENT OF THE INTERIOR
MINERALS MANAGEMENT SERVICE



DRAWING NUMBER
NI-19-4
Evans, NC

DRAWING NUMBER
1:250,000

DRAWING NUMBER

DRAWING NUMBER