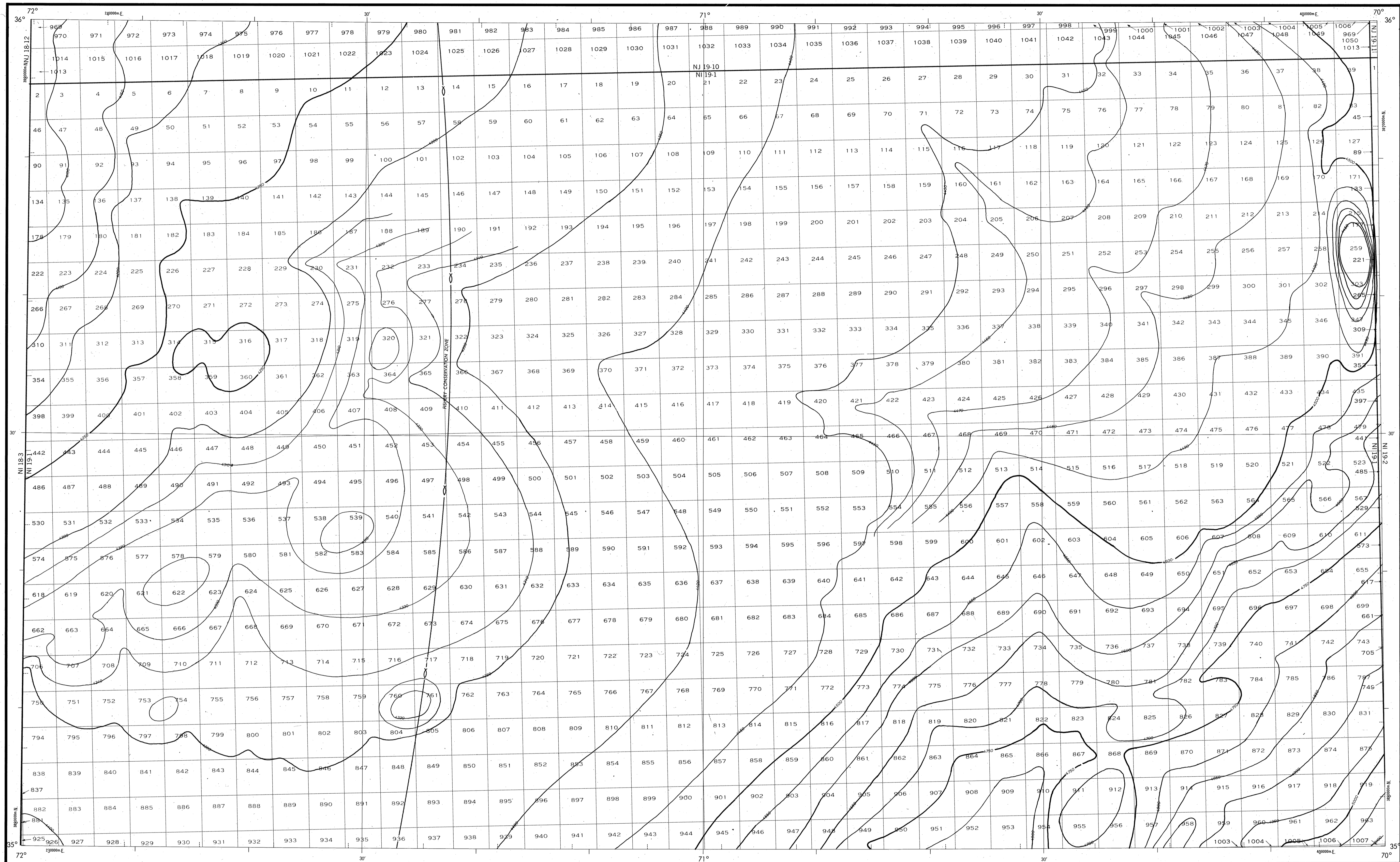


BATHYMETRIC MAP

ATLANTIC OCEAN
LIPPOLD



Bathymetry compiled by the National Ocean Service (NOS) from Bathymetric Data other than NOS hydrographic surveys. This is a facsimile reproduction of the bathymetric manuscript and does not necessarily represent its final published form. This information is not intended for navigational purposes.
Bathymetric Contour Interval: 50 meters to maximum depth, supplemented by 10 meter intervals.
Universal Transverse Mercator Grid, Zone 19, 10,000 meter ticks (-) are shown inside the neotline.

Protraction Diagram data shown in subdved (screened) block was compiled by the Minerals Management Service (MMS).
THIS MAP IS NOT A LEGAL DOCUMENT for Federal leasing purposes; for such purposes use the MMS Outer Continental Shelf Official Protraction Diagrams.
Heavy line(s) indicate limits of these protraction diagrams.

EVALUATION OF BATHYMETRIC DATA
Bathymetry compiled by the National Ocean Service from Random Trackings and Bathymetric Surveys from 1959 to 1974. The bathymetric data are in scale from 1:500,000 to 1:1,000,000 with a minimum line spacing of 5.0 and a maximum line spacing of 10.0 nautical miles. Data corrected for sound velocity according to Matthews' Tables, 1939.

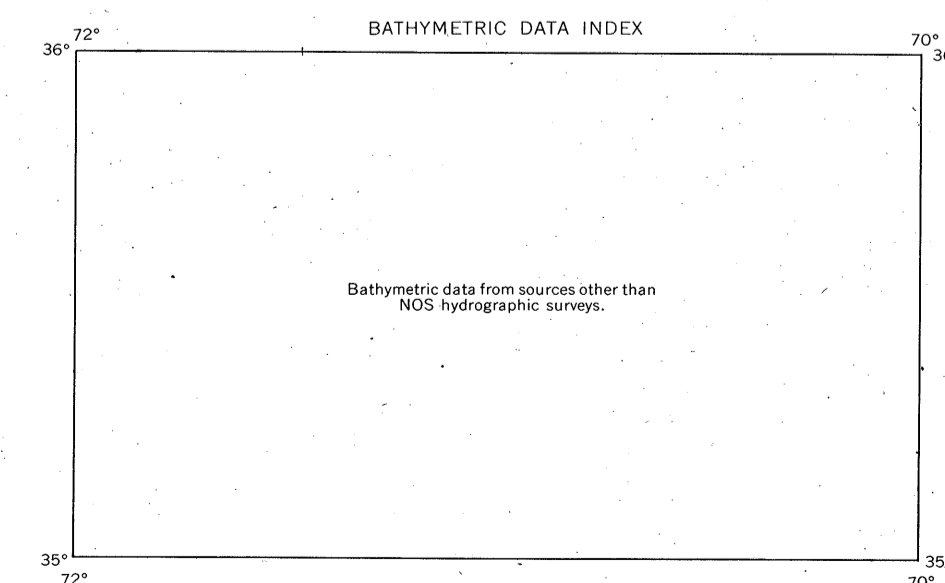
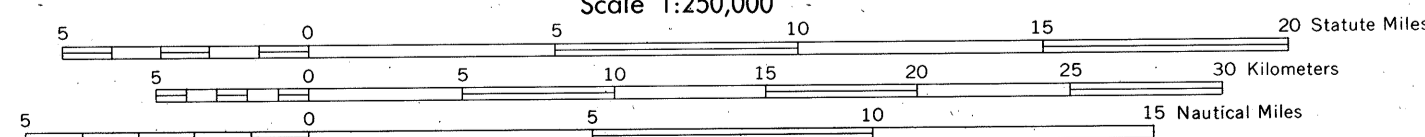
OUTER CONTINENTAL SHELF RESOURCE MANAGEMENT MAP
UNITED STATES DEPARTMENT OF COMMERCE
NATIONAL OCEANIC AND ATMOSPHERIC ADMINISTRATION
NATIONAL OCEAN SERVICE
1983

Produced at Washington, D.C.
for

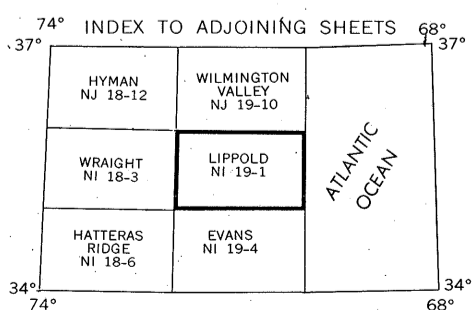
UNITED STATES DEPARTMENT OF THE INTERIOR
MINERALS MANAGEMENT SERVICE

TRANSVERSE MERCATOR PROJECTION

Scale 1:250,000



LIPPOLD
NOS NI 19-1 (OCS)



DRAWING NUMBER
NI 19-1
Lippold, NC

DRAWING NUMBER
1:250,000

DRAWING NUMBER

DR