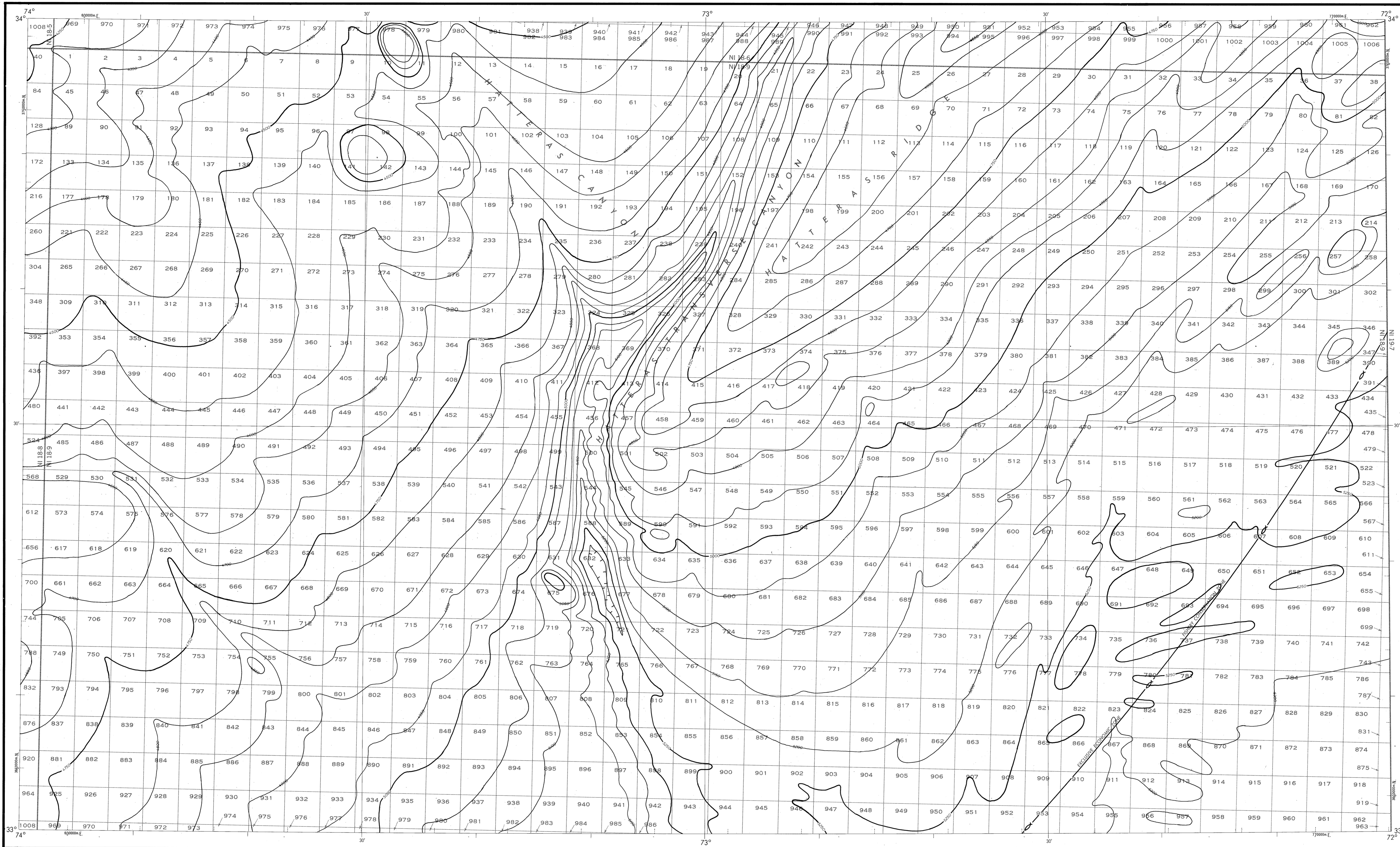


BATHYMETRIC MAP

ATLANTIC OCEAN
LANIER



Bathymetry compiled by the National Ocean Service (NOS) from Bathymetric Data other than NOS hydrographic surveys. This is a facsimile reproduction of the bathymetric manuscript and does not necessarily represent its final published form. This information is not intended for navigational purposes.

Bathymetric Contour Interval: 50 meters to maximum depth.

Universal Transverse Mercator Grid, Zone 18, 10,000 meter ticks (—) are shown inside the neoline.

Protraction Diagram data shown in subdivided (screened) block was compiled by the Minerals Management Service (MMS).

THIS MAP IS NOT A LEGAL DOCUMENT for Federal leasing purposes; for such purposes use the MMS Outer Continental Shelf Official Protraction Diagrams.

Heavy line(s) indicate limits of these protraction diagrams.

EVALUATION OF BATHYMETRIC DATA

Bathymetry compiled by the National Ocean Service from the Bathymetric and Bathymetric Surveys dated 1959 to 1974. The bathymetric data ranges in scale from 1:50,000 to 1:250,000. The contour interval is 50 meters to maximum depth. Data corrected for sound velocity according to Matthew's Tables, 1939.

OUTER CONTINENTAL SHELF RESOURCE MANAGEMENT MAP

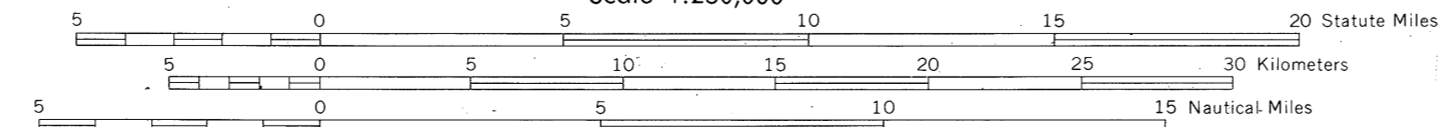
UNITED STATES DEPARTMENT OF COMMERCE
NATIONAL OCEANIC AND ATMOSPHERIC ADMINISTRATION
NATIONAL OCEAN SERVICE

1984
Produced at Washington, D.C.
for

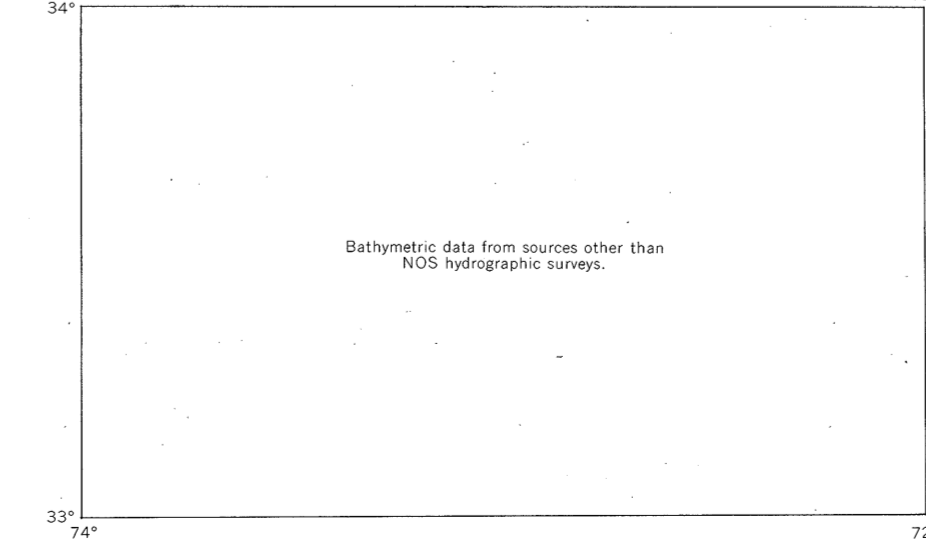
UNITED STATES DEPARTMENT OF THE INTERIOR
MINERALS MANAGEMENT SERVICE

TRANSVERSE MERCATOR PROJECTION

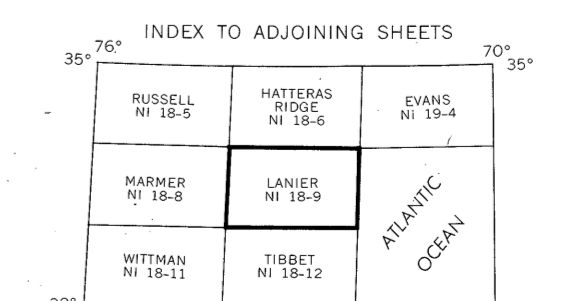
Scale 1:250,000



BATHYMETRIC DATA INDEX



LANIER
NOS NI 18-9 (OCS)



DRAWING NUMBER
NI 18-9
LANIER, SC

DRAWING NUMBER
1:250,000

DRAWING NUMBER

DRAWING NUMBER

DRAWING NUMBER