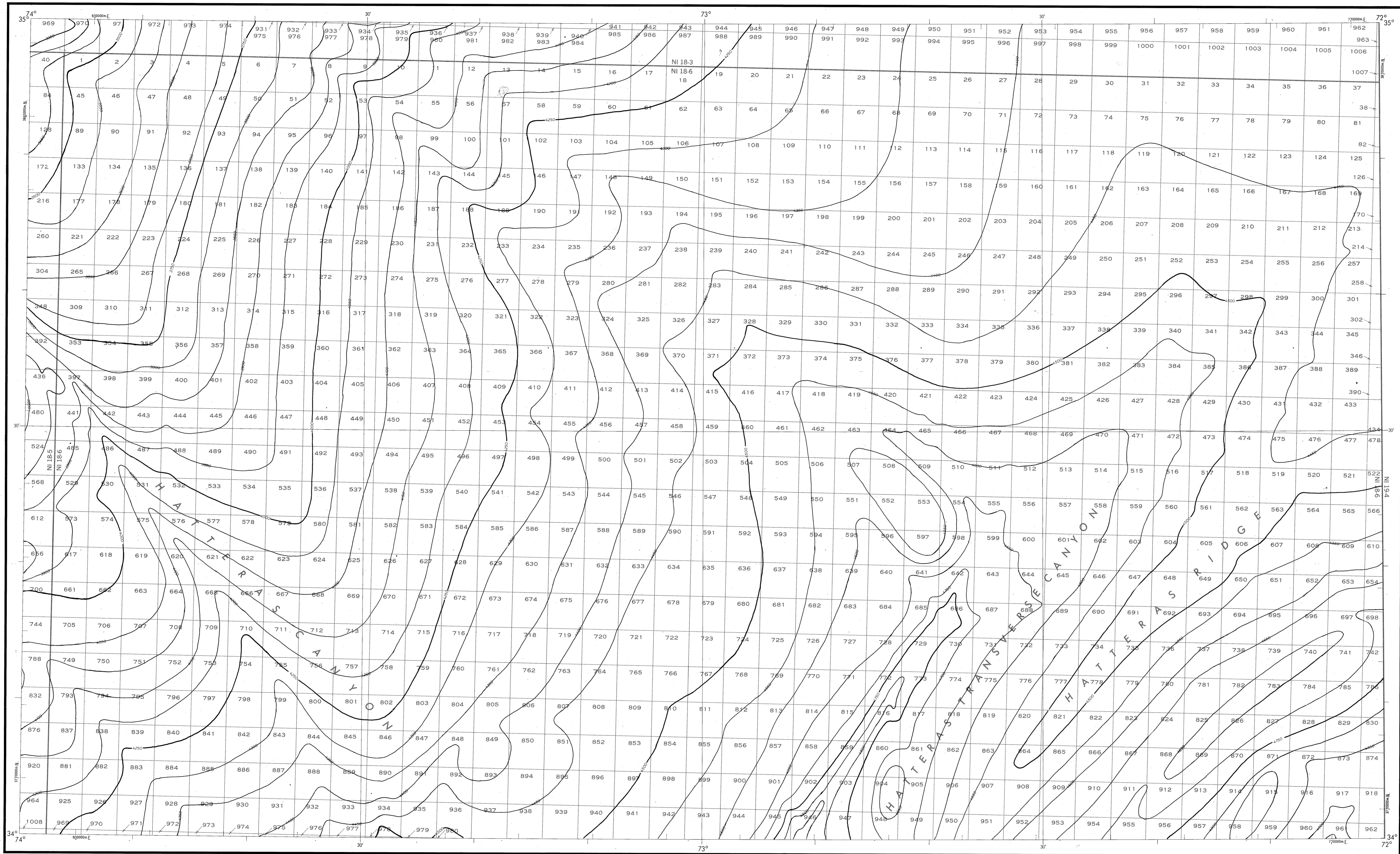


BATHYMETRIC MAP

ATLANTIC OCEAN
HATTERAS RIDGE



Bathymetry compiled by the National Ocean Service (NOS) from Bathymetric Data other than NOS hydrographic surveys. This is a facsimile reproduction of the bathymetric manuscript and does not necessarily represent its final published form. This information is not intended for navigational purposes.

Bathymetric Contour Interval: 50 meters to maximum depth.
Universal Transverse Mercator Grid, Zone 18; 10,000 meter ticks (---) are shown inside the neartline.

Protraction Diagram data shown in subdivided (screened) black was compiled by the Minerals Management Service (MMS).

THIS MAP IS NOT A LEGAL DOCUMENT for Federal leasing purposes; for such purposes use the MMS Outer Continental Shelf Official Protraction Diagrams.
Heavy lines indicate limits of these protraction diagrams.

EVALUATION OF BATHYMETRIC DATA

Bathymetry compiled by the National Ocean Service from Random Trackings and Bathymetric Surveys dated 1957 to 1974. The Bathymetric Data range in scale from 1:500,000 to 1:100,000 with a maximum line spacing of 8.0 and a maximum line spacing of 10.0 nautical miles. Data compiled for sound selection according to Matthews' Tables, 1939.

OUTER CONTINENTAL SHELF RESOURCE MANAGEMENT MAP

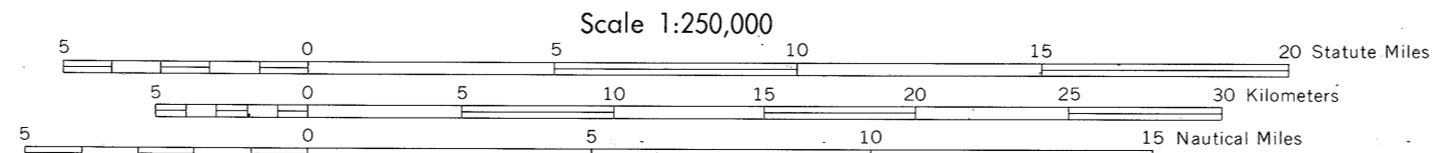
UNITED STATES DEPARTMENT OF COMMERCE
NATIONAL OCEANIC AND ATMOSPHERIC ADMINISTRATION
NATIONAL OCEAN SERVICE

1984

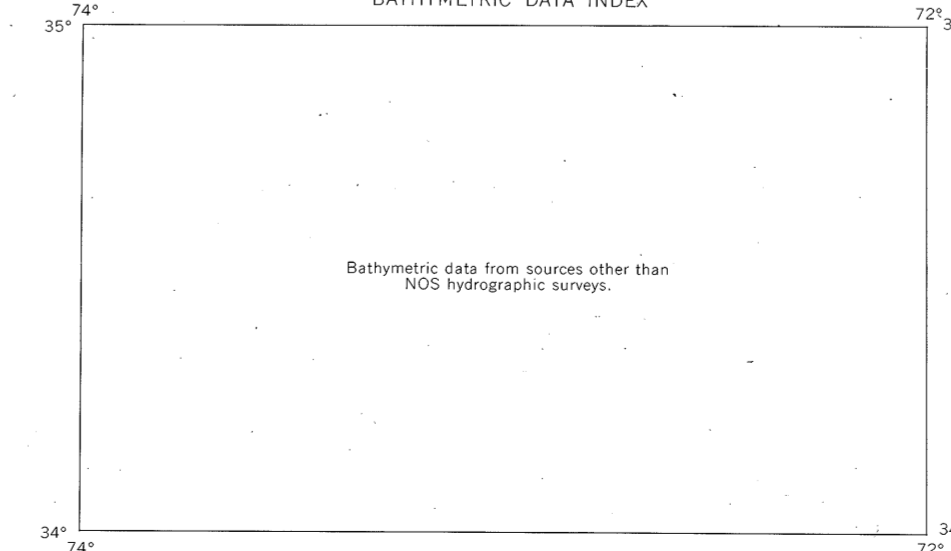
Produced at Washington, D.C.
for

UNITED STATES DEPARTMENT OF THE INTERIOR
MINERALS MANAGEMENT SERVICE

TRANSVERSE MERCATOR PROJECTION
Scale 1:250,000



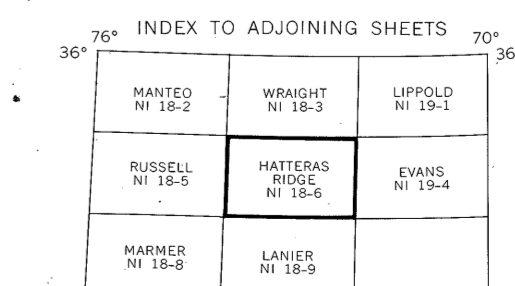
BATHYMETRIC DATA INDEX



Bathymetric data from sources other than NOS hydrographic surveys.

HATTERAS RIDGE

NOS NI 18-6 (OCS)



DRAWING NUMBER
NI 18-6
Hatteras Ridge, NC

DRAWING NUMBER
1:250,000

DRAWING NUMBER

DRAWING NUMBER