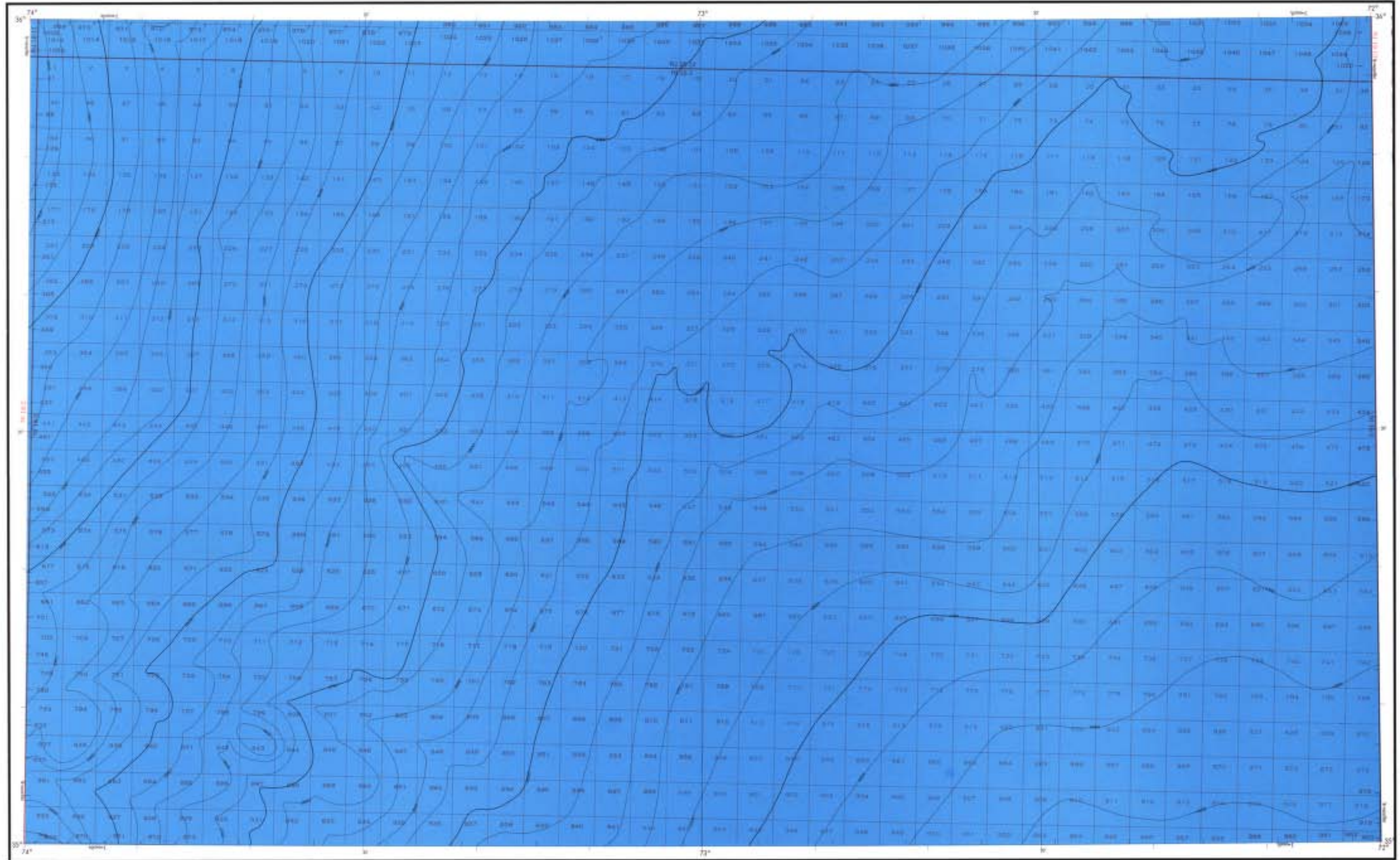


# BATHYMETRIC MAP



Bathymetry compiled by the National Ocean Service (NOS) from Bathymetric Data other than NOS hydrographic surveys. This information is not intended for navigational purposes. Universal Transverse Mercator Grid Zone 18, 1000 Meter Ticks (---) are shown inside the rectangle.

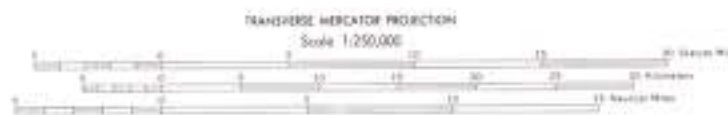
Offshore protection survey lines, shown in red, compiled by the Minerals Management Service. Heavy lines indicate limits of MMS Outer Continental Shelf Official Protection Diagram. The protection on this map are not for Federal leasing purposes; for such purposes refer to the OCS Official Protection Diagram available from the Minerals Management Service.

**EXPLANATION OF BATHYMETRIC DATA**

Bathymetry compiled by the National Ocean Service from hydrographic surveys and other data. The bathymetric data range in depth from 1,000 meters to 11,000 meters. Bathymetric contours are shown at 30 meter intervals. Bathymetric contours are shown in black.



Published at Washington, D.C.  
U.S. DEPARTMENT OF COMMERCE  
NATIONAL OCEANIC AND ATMOSPHERIC ADMINISTRATION  
NATIONAL OCEAN SERVICE  
1983  
BATHYMETRIC CONTOUR INTERVAL: 30 METERS TO MAXIMUM DEPTH.



WRAIGHT  
NOS NI 18-3

