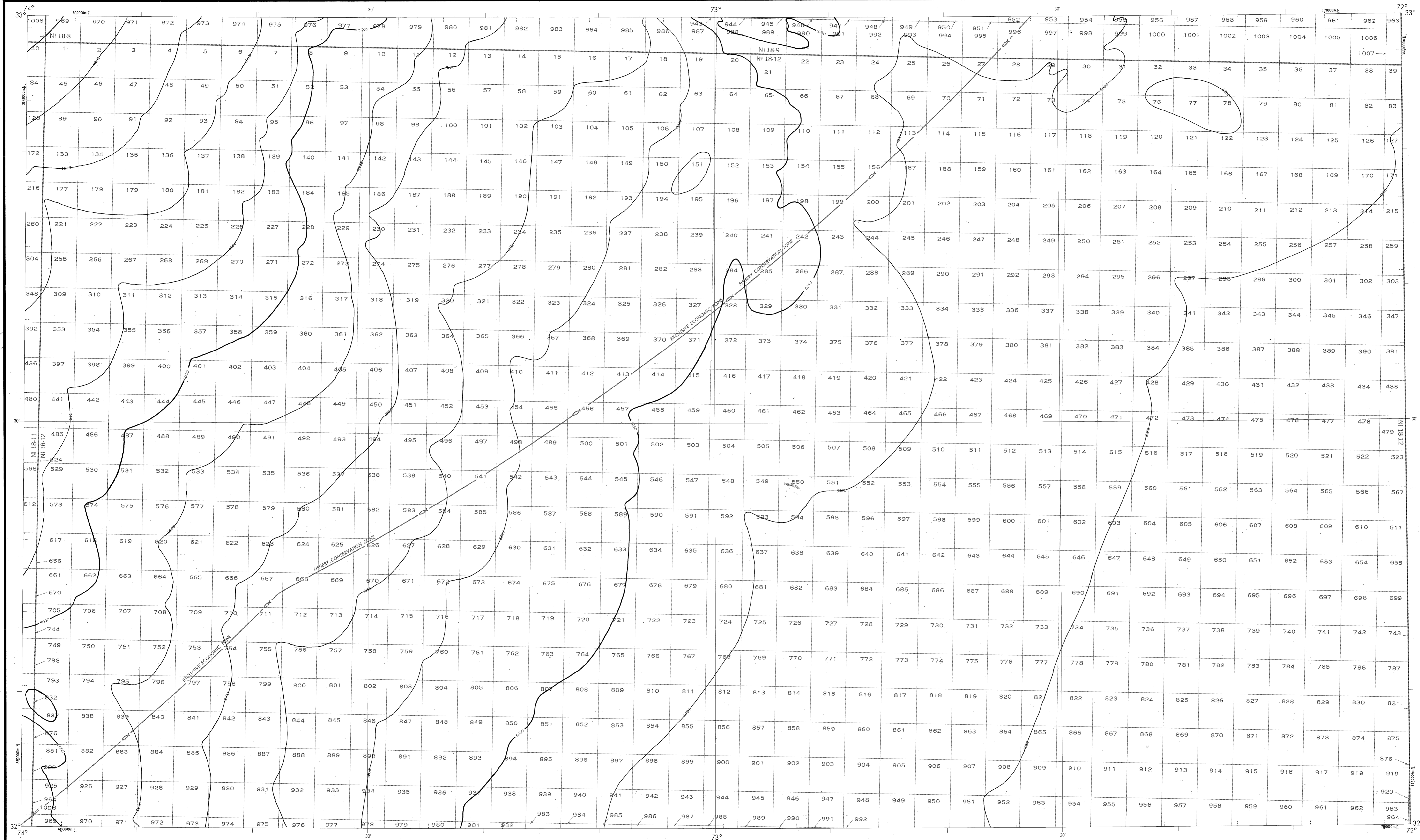


# BATHYMETRIC MAP

ATLANTIC OCEAN  
TIBBET



Bathymetry compiled by the National Ocean Service (NOS) from Bathymetric Data other than NOS hydrographic surveys. This is a facsimile reproduction of the bathymetric manuscript and does not necessarily represent its final published form. This information is not intended for navigational purposes.  
 Bathymetric Contour Interval: 50 meters to maximum depth.  
 Universal Transverse Mercator Grid, Zone 18, 10,000 meter ticks (---) are shown inside the realine.  
 Protraction Diagram data shown in subdued (screened) black was compiled by the Minerals Management Service (MMS).  
**THIS MAP IS NOT A LEGAL DOCUMENT** for Federal leasing purposes; for such purposes use the MMS Outer Continental Shelf Official Protraction Diagrams.  
 Heavy line(s) indicate limits of these protraction diagrams.

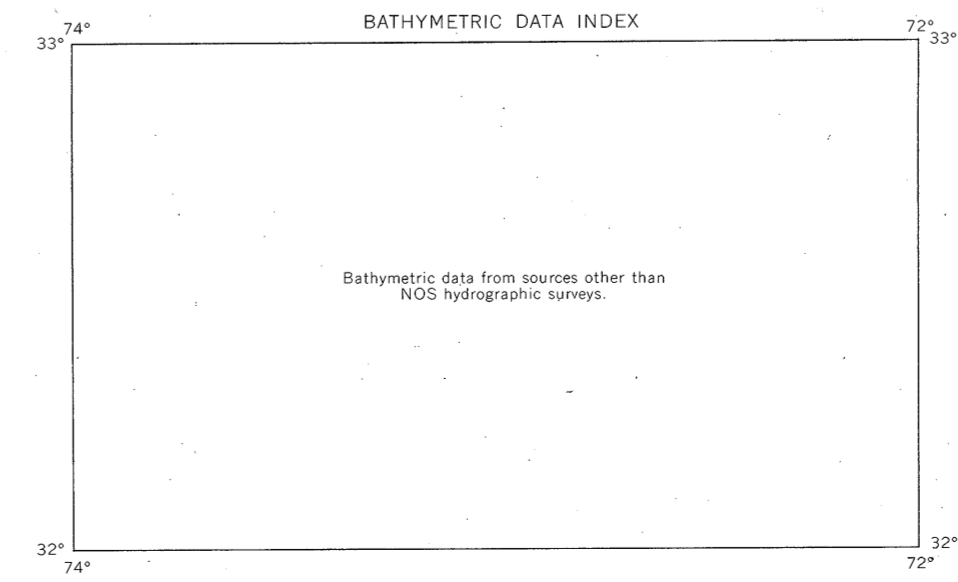
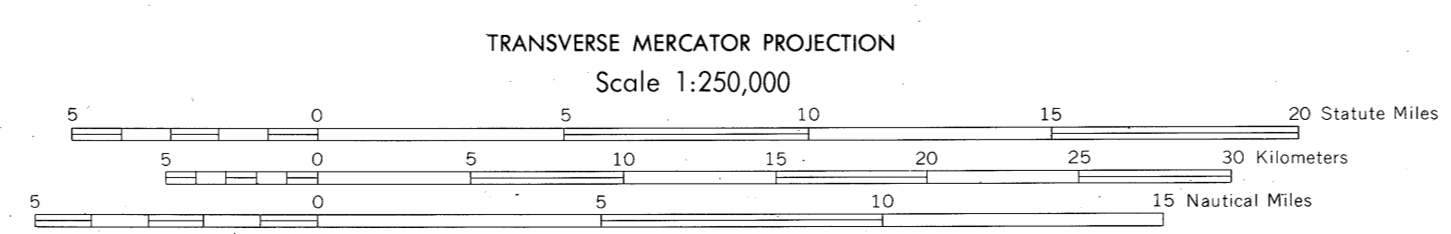
EVALUATION OF BATHYMETRIC DATA  
 Bathymetry compiled by the National Ocean Service from Random Trackings and Bathymetric Surveys dated 1959 to 1974. The Bathymetric Data range in scale from 1:500,000 to 1:1,000,000 with a maximum line spacing of 4.0 and a maximum data spacing of 10.0 nautical miles. Data sources for bathymetry according to Matthews' Tables, 1939.

## OUTER CONTINENTAL SHELF RESOURCE MANAGEMENT MAP

UNITED STATES DEPARTMENT OF COMMERCE  
 NATIONAL OCEANIC AND ATMOSPHERIC ADMINISTRATION  
 NATIONAL OCEAN SERVICE

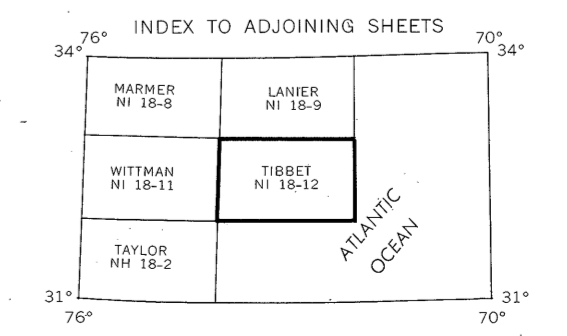
1984  
 Produced at Washington, D.C.  
 for

UNITED STATES DEPARTMENT OF THE INTERIOR  
 MINERALS MANAGEMENT SERVICE



## TIBBET

NOS NI 18-12 (OCS)



DRAWING NUMBER  
**NI 18-12**  
**71664, SC**

DRAWING NUMBER  
**1:250,000**

DRAWING NUMBER

DRAWING NUMBER

PLANNED COOPERATION • BUREAU OF OCEANOGRAPHY • NATIONAL OCEANIC AND ATMOSPHERIC ADMINISTRATION • U.S. DEPARTMENT OF COMMERCE  
 PRINTED AND MANUFACTURED BY THE NATIONAL OCEANIC AND ATMOSPHERIC ADMINISTRATION, SILVER SPRING, MARYLAND