

DRAWING NUMBER

DRAWING NUMBER

DRAWING NUMBER  
1:100,000

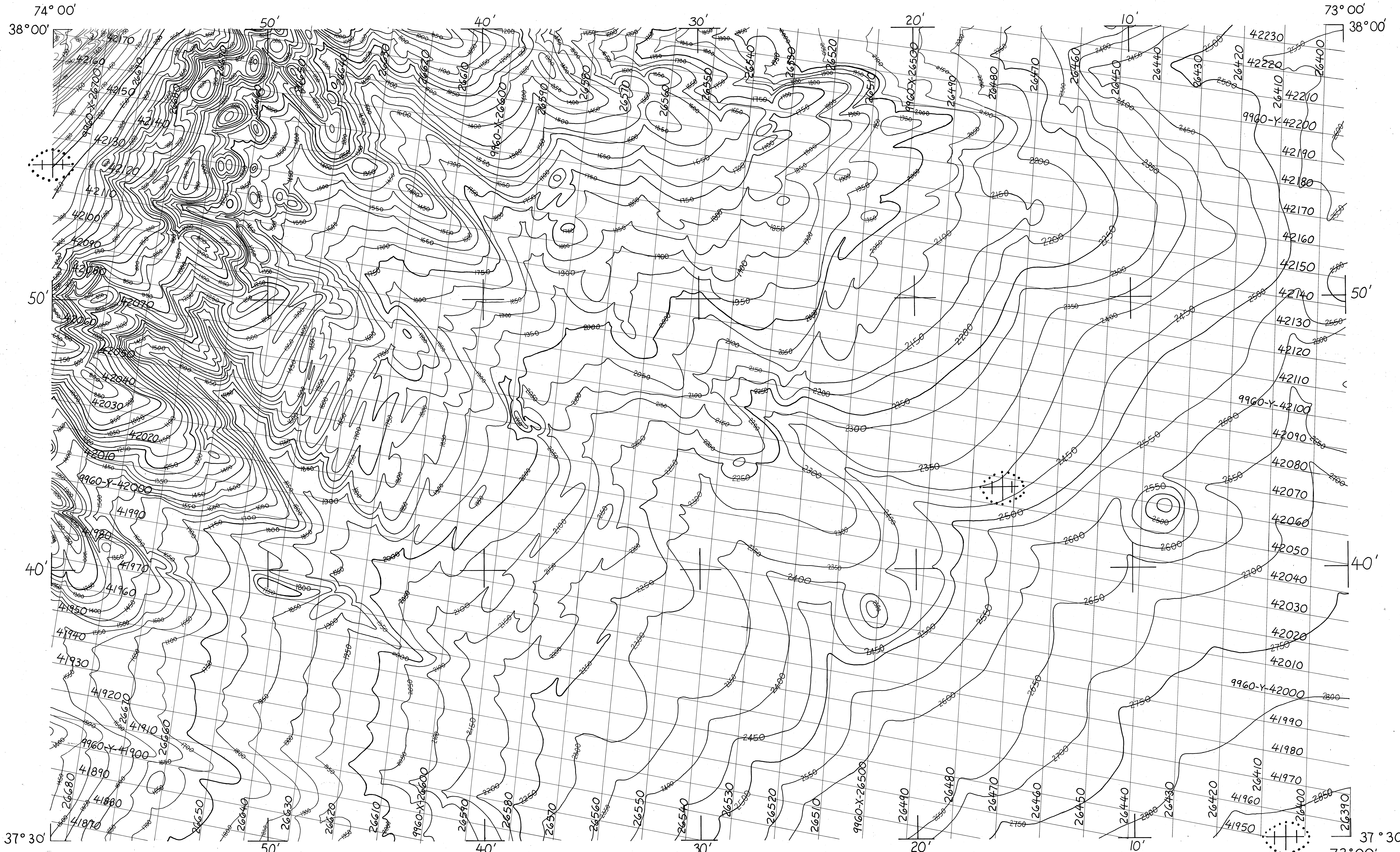
DRAWING NUMBER  
L-155

PLAN HOLD CORPORATION • IRVINE, CALIFORNIA  
REGISTERED PROFESSIONAL ENGINEER  
PROFESSIONAL SEAL OF STATE OF CALIF.

PLAN HOLD CORPORATION • IRVINE, CALIFORNIA  
REGISTERED PROFESSIONAL ENGINEER  
PROFESSIONAL SEAL OF STATE OF CALIF.

PLAN HOLD CORPORATION • IRVINE, CALIFORNIA  
REGISTERED PROFESSIONAL ENGINEER  
PROFESSIONAL SEAL OF STATE OF CALIF.

PLAN HOLD CORPORATION • IRVINE, CALIFORNIA  
REGISTERED PROFESSIONAL ENGINEER  
PROFESSIONAL SEAL OF STATE OF CALIF.



BALTIMORE RISE N.W.

CORRECTED METERS

SCALE 1:100,000  
L-155