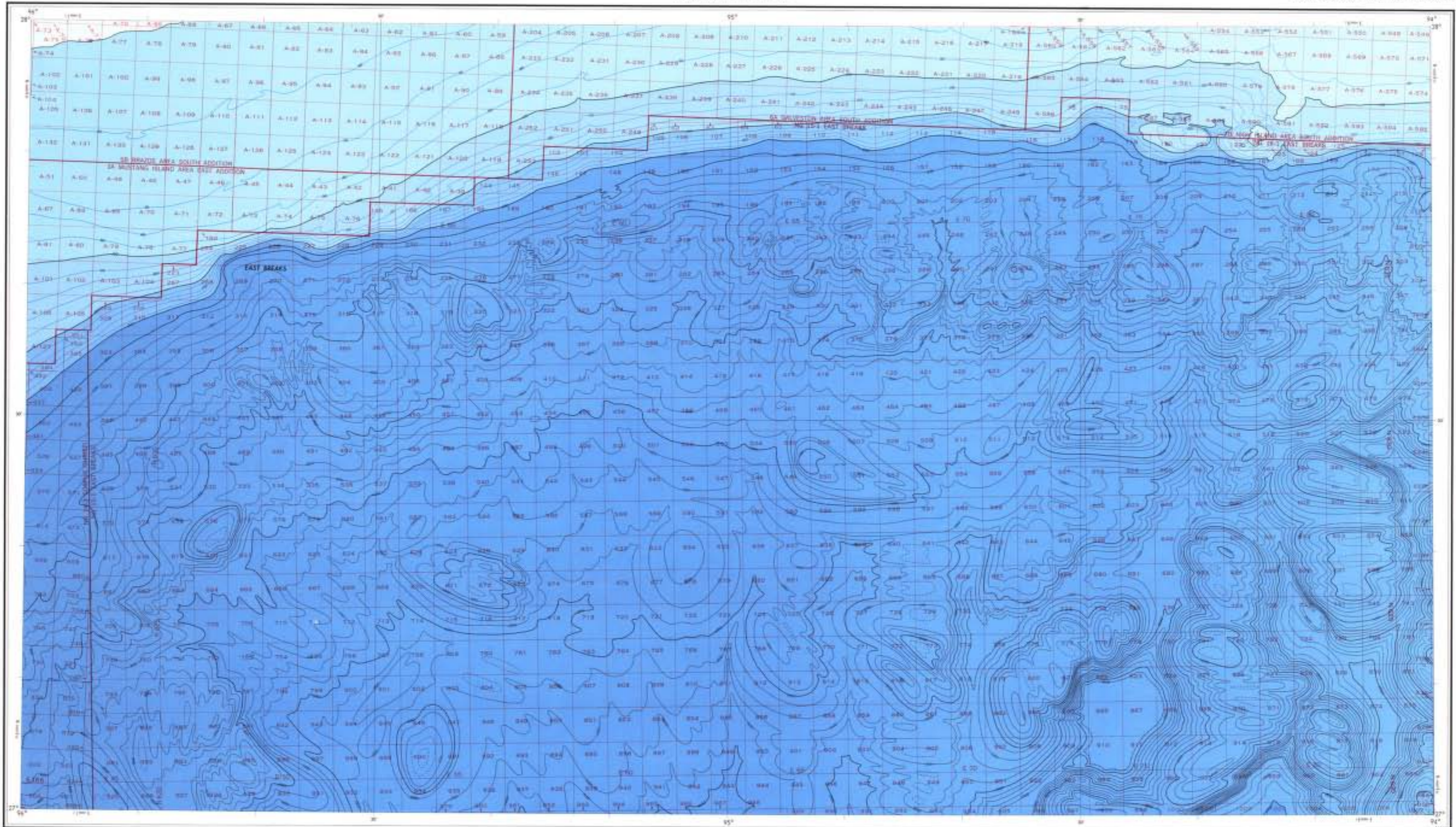


NOS NG15-1 (OCS)



Base map information including bathymetry, compiled by the National Ocean Survey from NOS hydrographic surveys supplemented by hydrographic information from other sources. Bathymetric contour intervals: 10 meters to the 200 meter depth, supplemented by 2 meter intervals, thence 30 meters to the maximum depth, supplemented by 10 meter intervals Datum MLLW.

Universal Transverse Mercator Grid Zone 18 10000 meter (41) - (see datum on the opposite side of this map)

Loss of sufficient data on portions of the map requires the use of generalized form lines to infer available shape for rounded or elliptical shaped features that would otherwise appear truncated. The form lines are not at the prescribed contour interval.

Provisional Depth soundings are indicated in red on this map.

This map is NOT a (304) DOCUMENT for Federal agency purposes. For such purposes use the Best Quality Governmental Best Official Publication Diagram.

Notice: All trade names herein are those of the manufacturer.

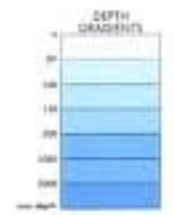
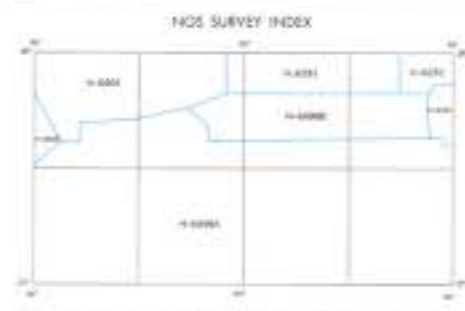
EVALUATION OF SURVEY ACCURACY

Soundings	Number	Mean Error	Standard Error	Maximum Error
0-200	150	0.10	0.15	0.20
200-300	140	0.10	0.15	0.20
300-400	130	0.10	0.15	0.20
400-500	120	0.10	0.15	0.20
500-600	110	0.10	0.15	0.20
600-700	100	0.10	0.15	0.20
700-800	90	0.10	0.15	0.20
800-900	80	0.10	0.15	0.20
900-1000	70	0.10	0.15	0.20

VERTICAL DEPTH ACCURACY ANALYSIS
 Depth: 0-200 0.10
 200-300 0.10
 300-400 0.10
 400-500 0.10
 500-600 0.10
 600-700 0.10
 700-800 0.10
 800-900 0.10
 900-1000 0.10

OUTER CONTINENTAL SHELF RESOURCE MANAGEMENT MAP
 UNITED STATES DEPARTMENT OF COMMERCE
 NATIONAL OCEANIC AND ATMOSPHERIC ADMINISTRATION
 NATIONAL OCEAN SURVEY
 1975
 Published in Washington, D.C.

FOR
 UNITED STATES DEPARTMENT OF THE INTERIOR
 BUREAU OF LAND MANAGEMENT



Photographic copies of the above and prior survey maps may be obtained, on the condition of reproduction, by addressing the Director, National Ocean Survey, National Oceanic and Atmospheric Administration, Rockville, Maryland 20850.

EAST BREAKS
 NOS NG15-1 (OCS)