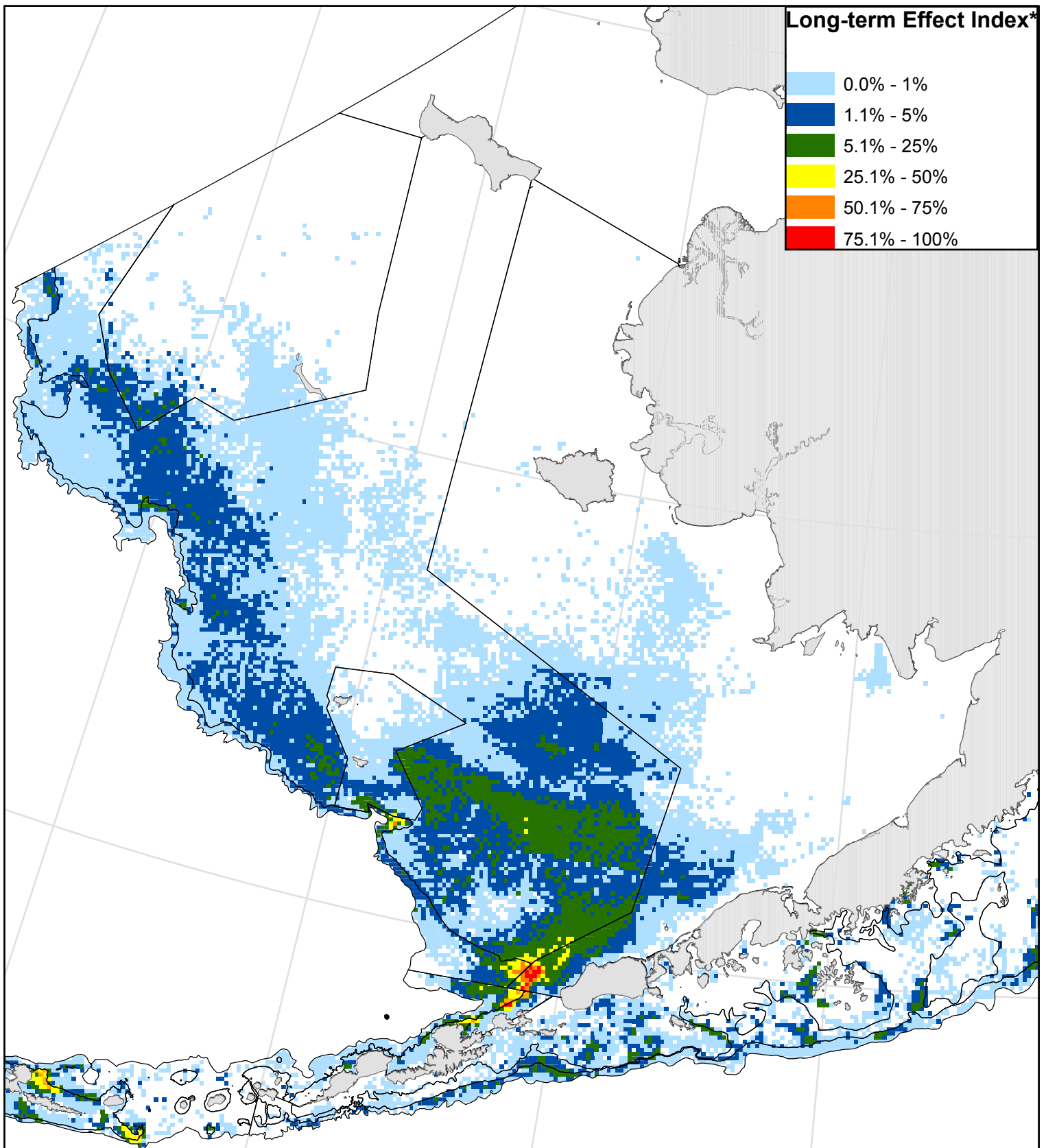


**Figure B.2-4a. Distribution of LEI of Fishing Effects on Non-living Structure - Bering Sea**



Source: NMFS Data

\* LEI - Estimated eventual reduction of the habitat feature if recent fishery intensity and distribution were continued until fishing effect rates and habitat recovery rates equalized (equilibrium)

Figure B.2-4b. Distribution of LEI of Fishing Effects on Non-living Structure - Gulf of Alaska

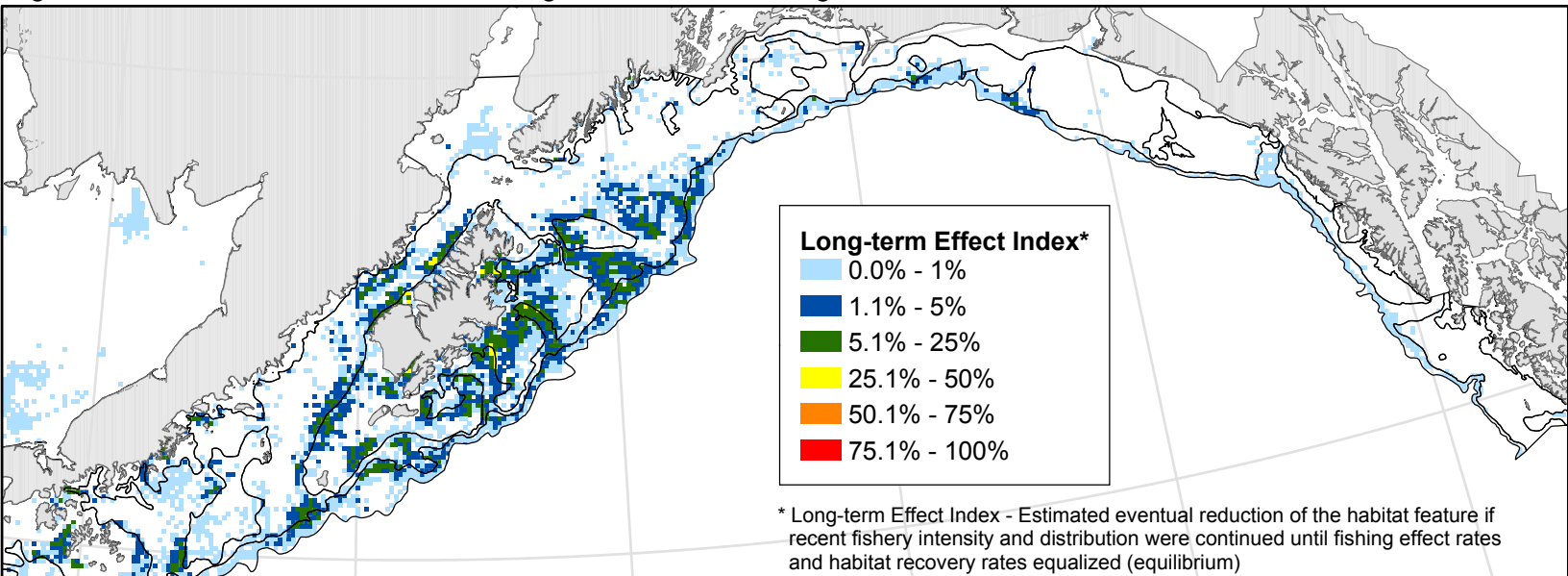
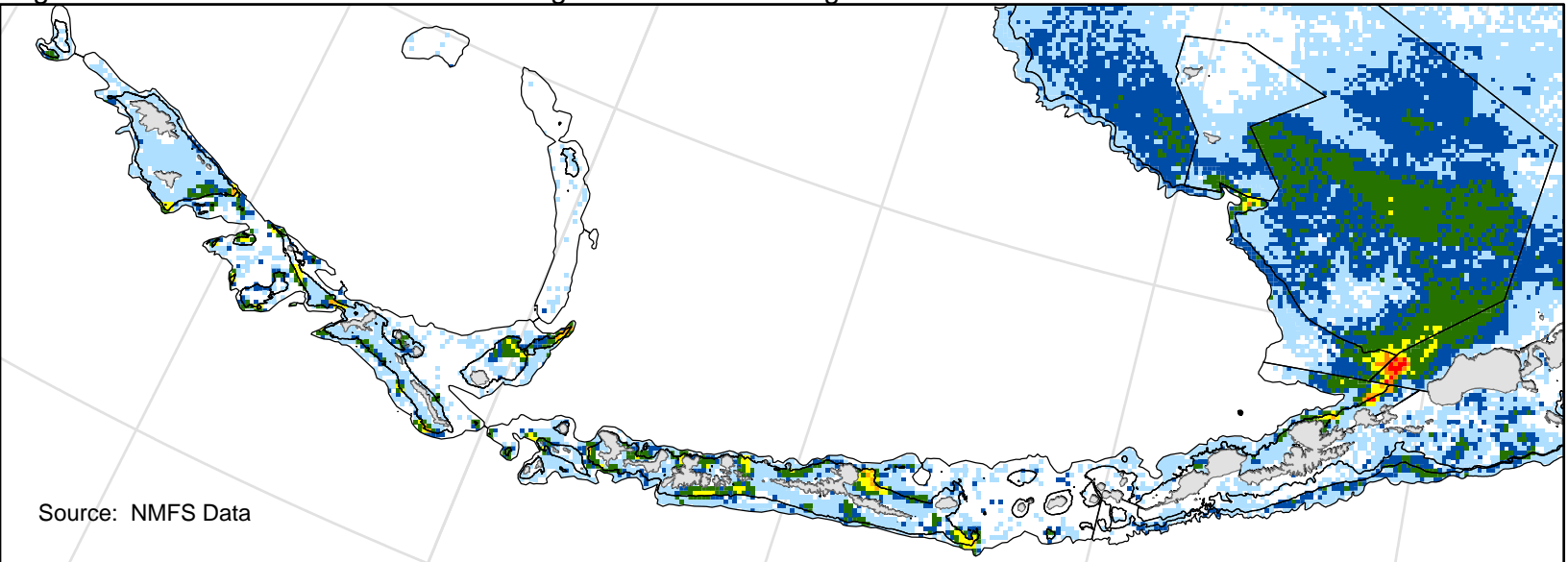
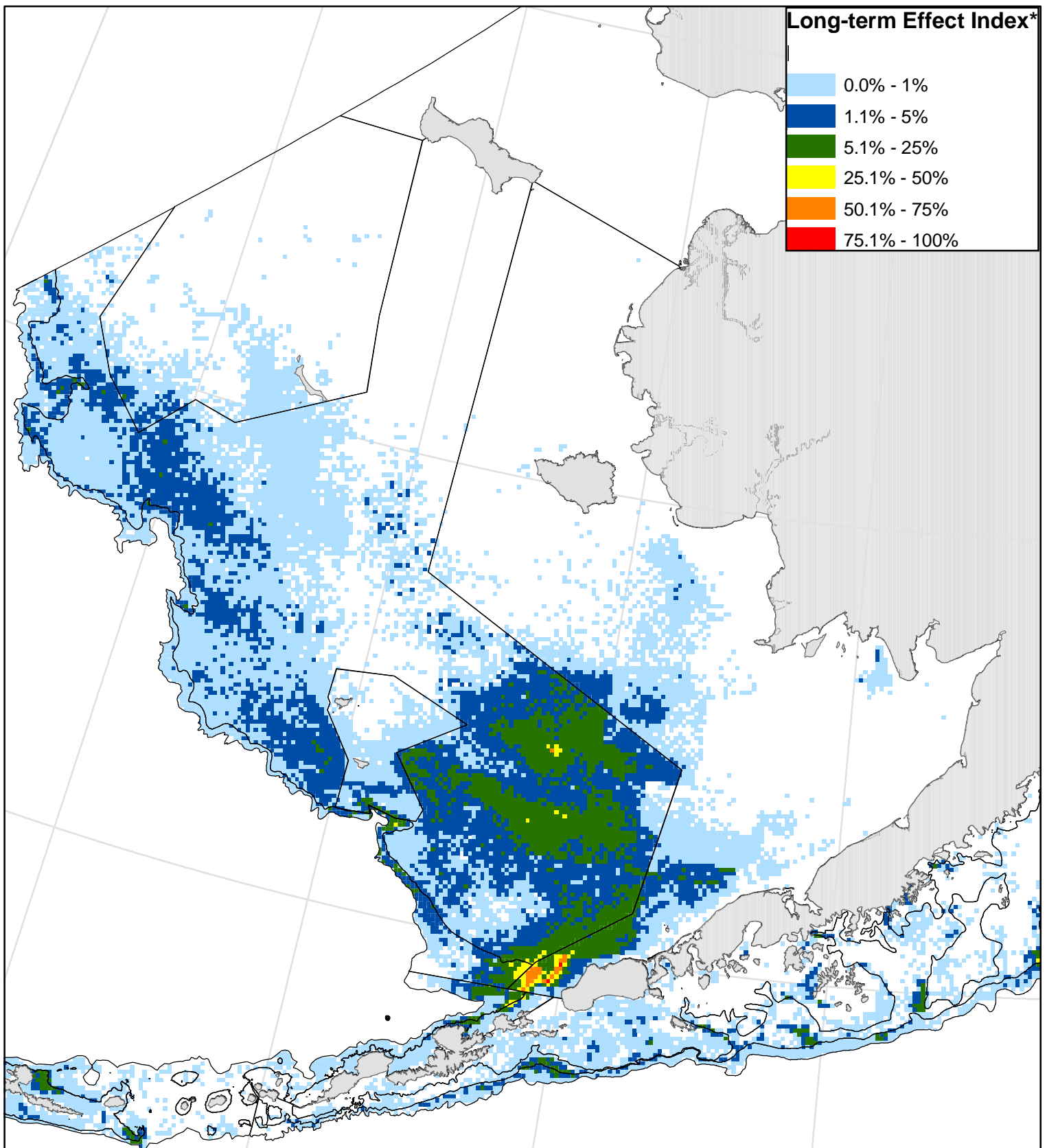


Figure B.2-4c. Distribution of LEI of Fishing Effects on Non-living Structure - Aleutian Islands



Source: NMFS Data

**Figure B.2-5a Distribution of LEI of Fishing Effects on Epifauna Prey - Bering Sea**



Source: NMFS Data

\* LEI - Estimated eventual reduction of the habitat feature if recent fishery intensity and distribution were continued until fishing effect rates and habitat recovery rates equalized (equilibrium)

Figure B.2-5b. Distribution of LEI of Fishing Effects on Epifauna Prey - Gulf of Alaska

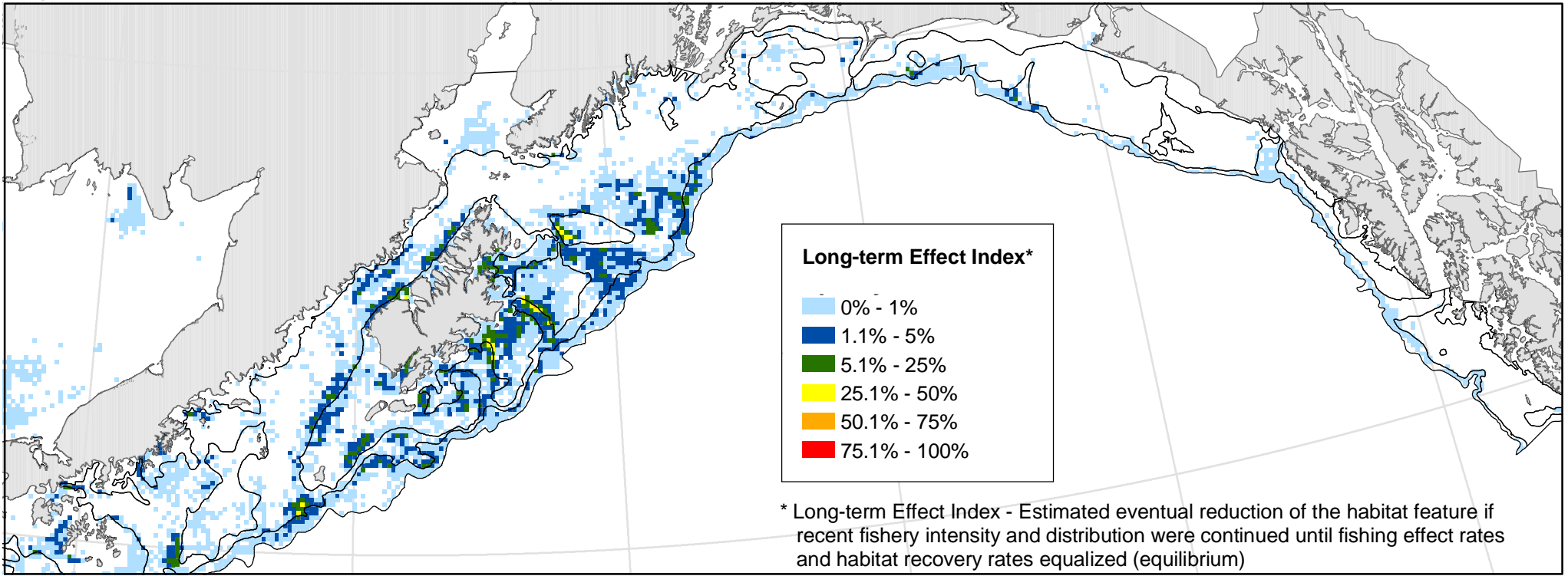
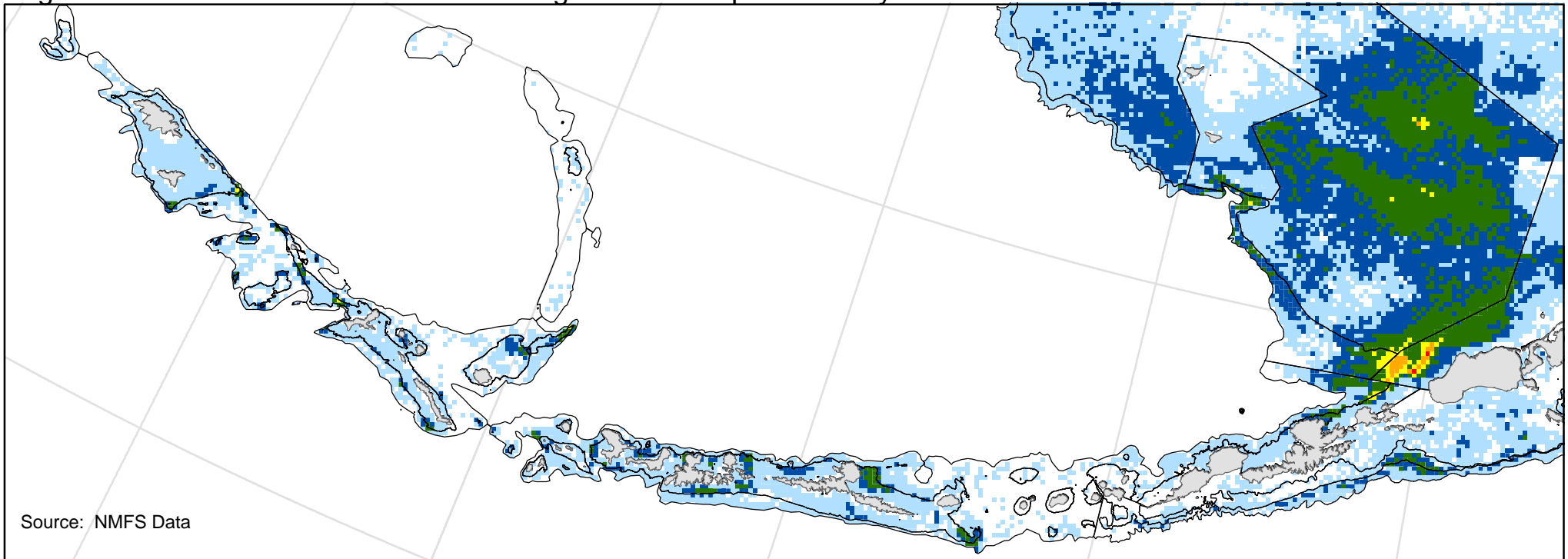


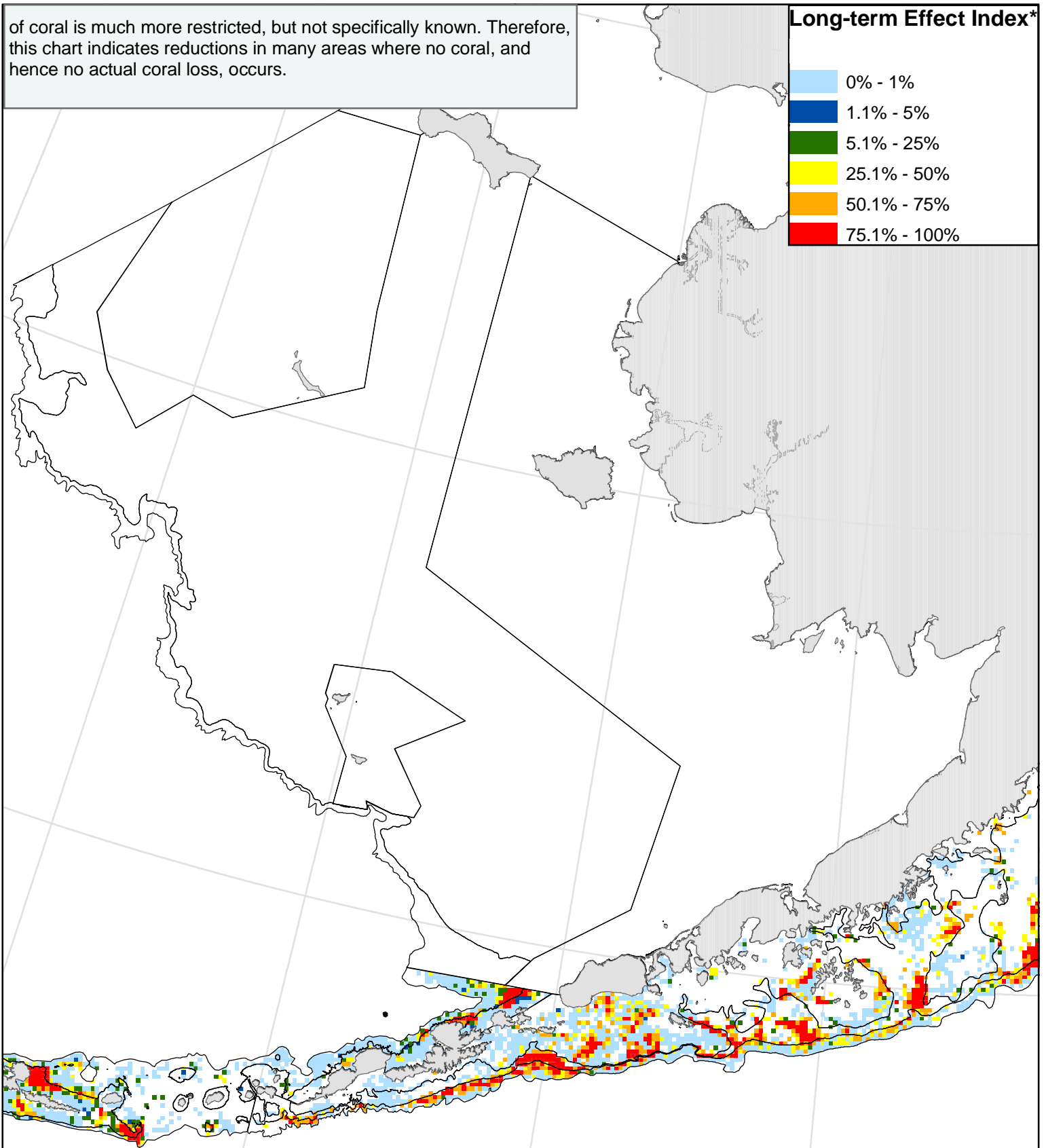
Figure B.2-5c. Distribution of LEI of Fishing Effects on Epifauna Prey - Aleutian Islands



Source: NMFS Data

**Figure B.2-6a. Distribution of LEI of Fishing Effects on Coral - Bering Sea**

of coral is much more restricted, but not specifically known. Therefore, this chart indicates reductions in many areas where no coral, and hence no actual coral loss, occurs.



Source: NMFS Data

\* LEI - Estimated eventual reduction of the habitat feature if recent fishery intensity and distribution were continued until fishing effect rates and habitat recovery rates equalized (equilibrium)

Figure B.2-6b. Distribution of LEI of Fishing Effects on Coral - Gulf of Alaska

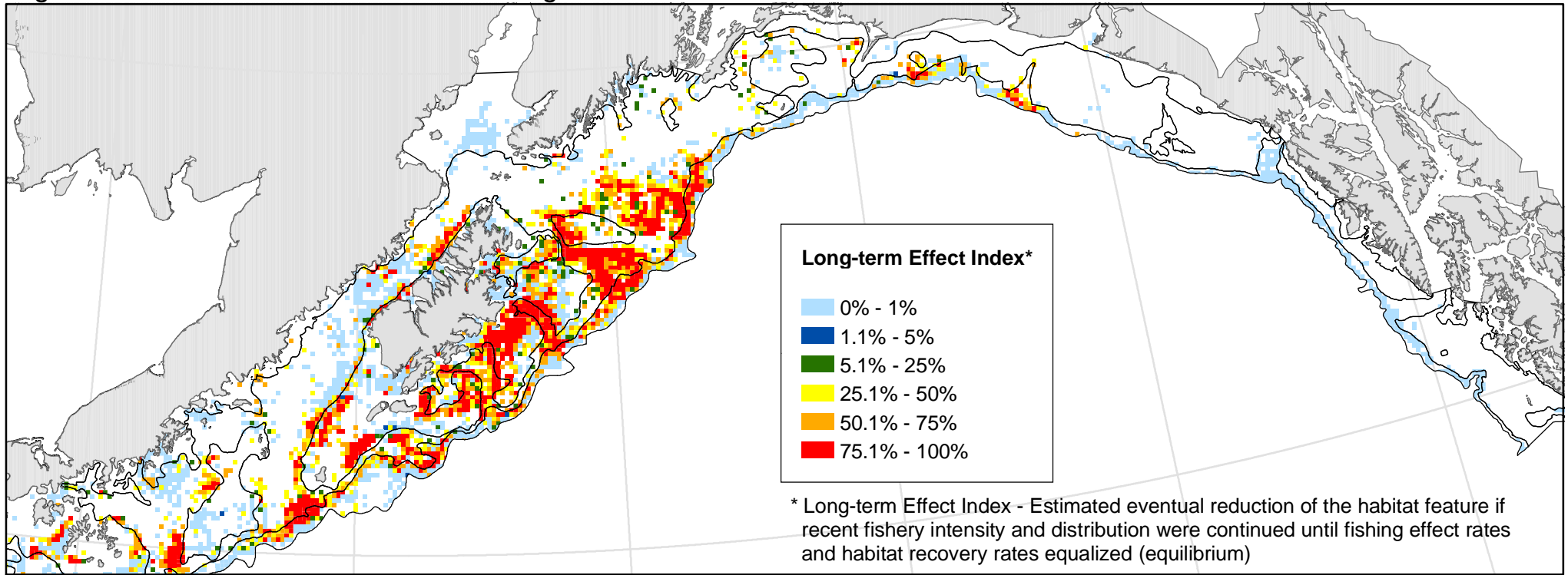


Figure B.2-6c. Distribution of LEI of Fishing Effects on Coral - Aleutian Islands

