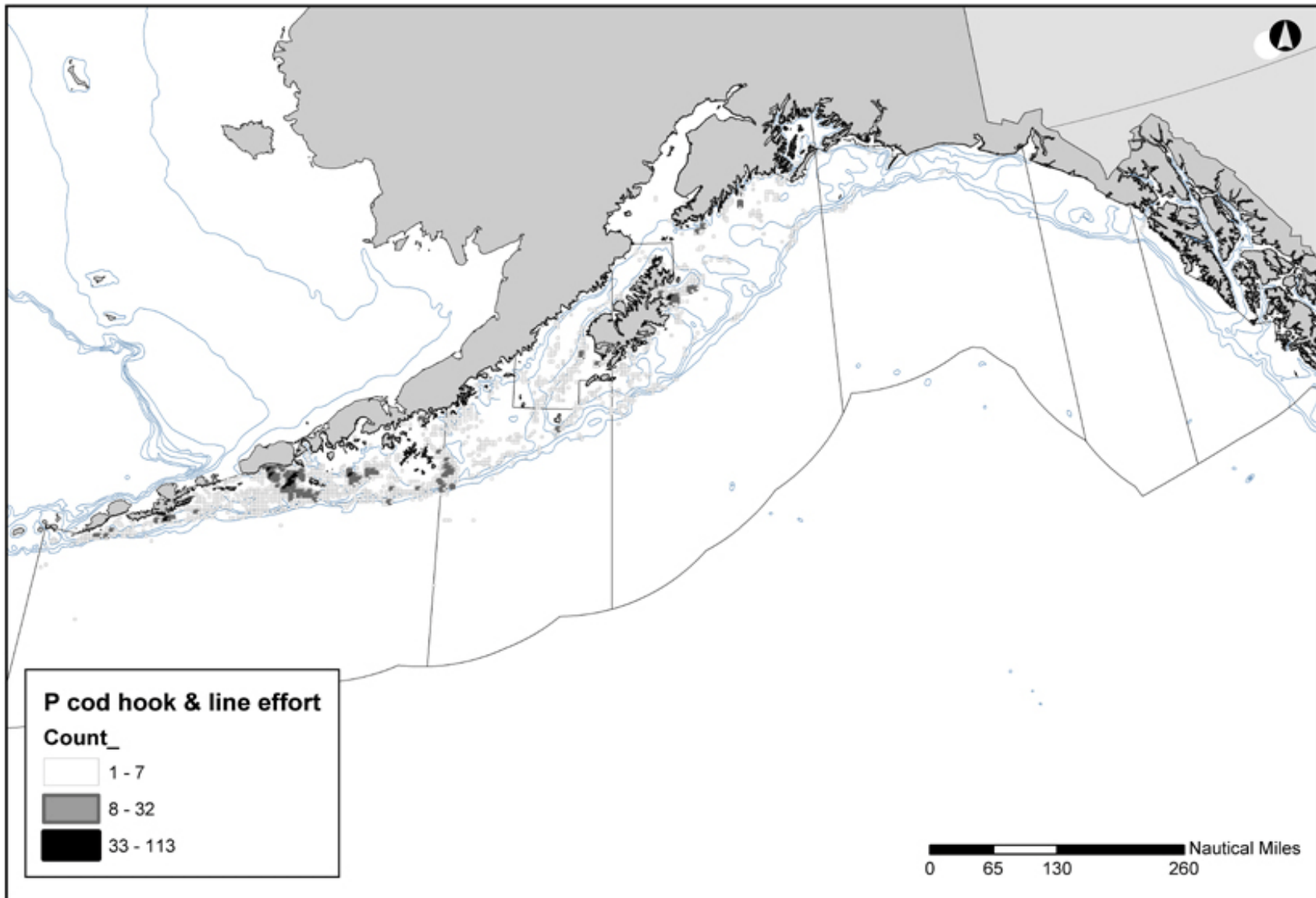


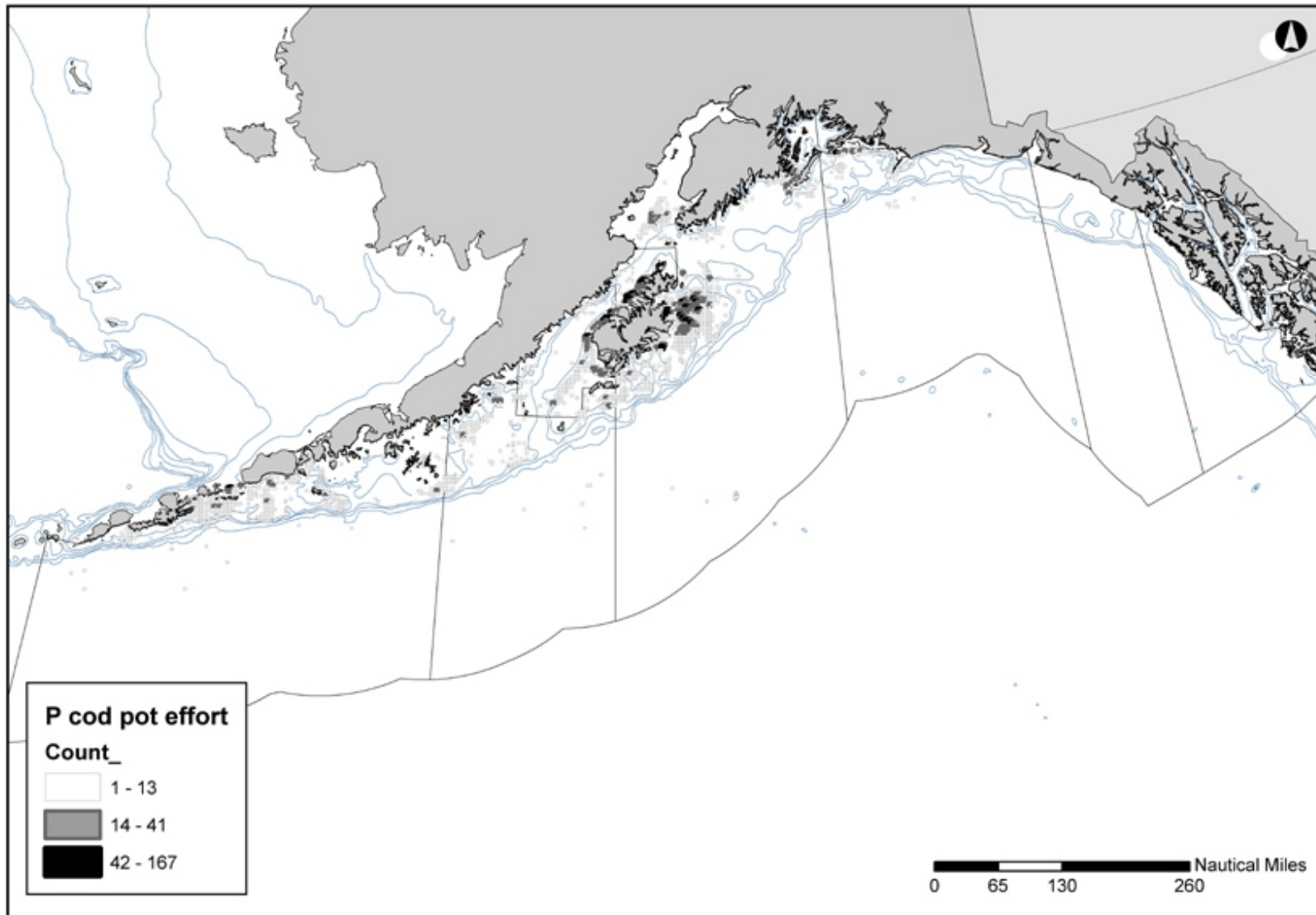
**Figure 3.4-14.** Gulf of Alaska: 1990-2002 Observed Pacific Cod Hook and Line Effort (Sets/25 km<sup>2</sup>)



Note: (Sets/25 km<sup>2</sup>) = Summed for 1990 to 2002

Source: Cathy Coon, NPFMC Staff, North Pacific Observer Program Data

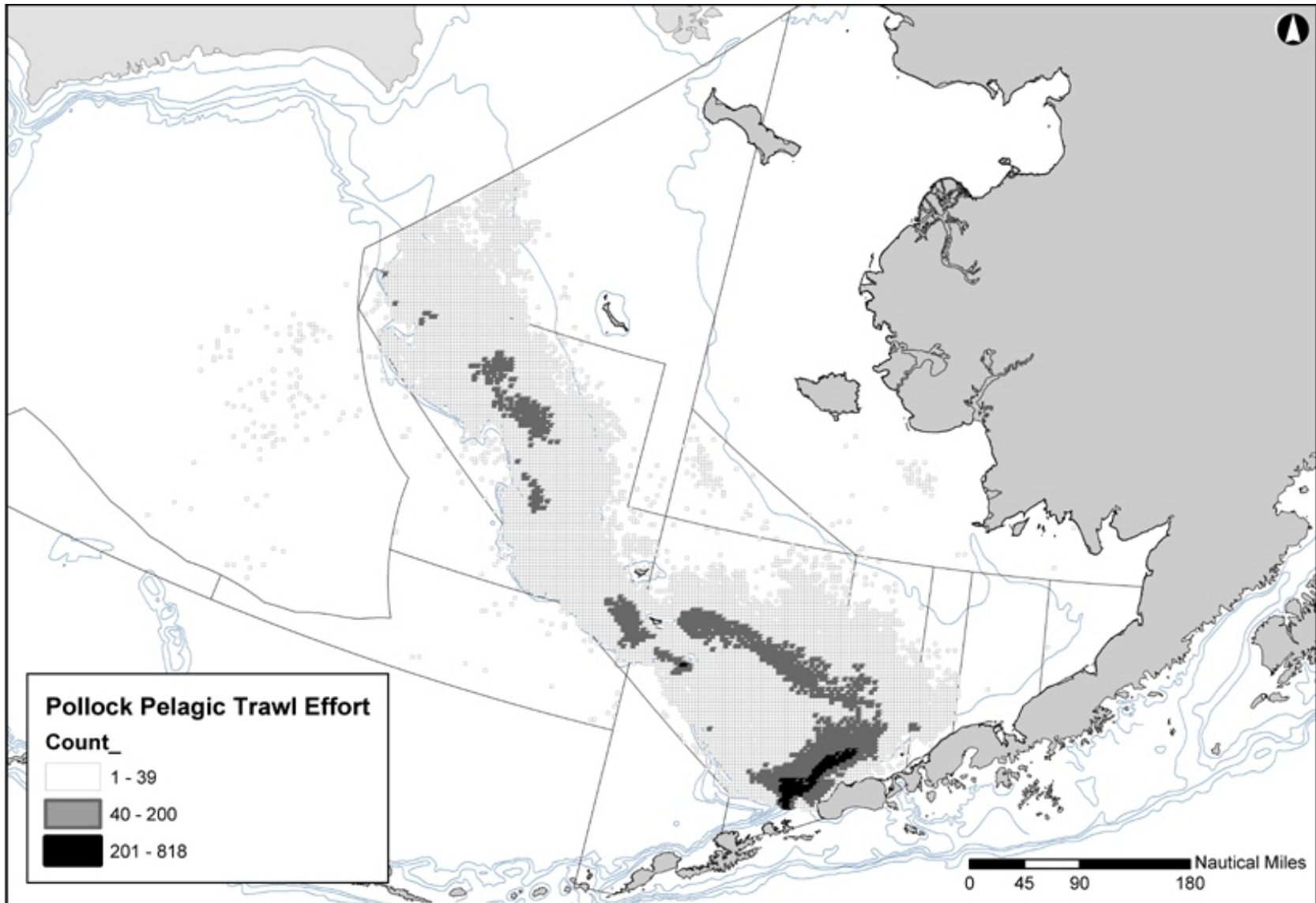
**Figure 3.4-15.** Gulf of Alaska: 1990-2002 Observed Pacific Cod Pot Effort (Sets/25 km<sup>2</sup>)



Note: (Sets/25 km<sup>2</sup>) = Summed for 1990 to 2002

Source: Cathy Coon, NPFMC Staff, North Pacific Observer Program Data

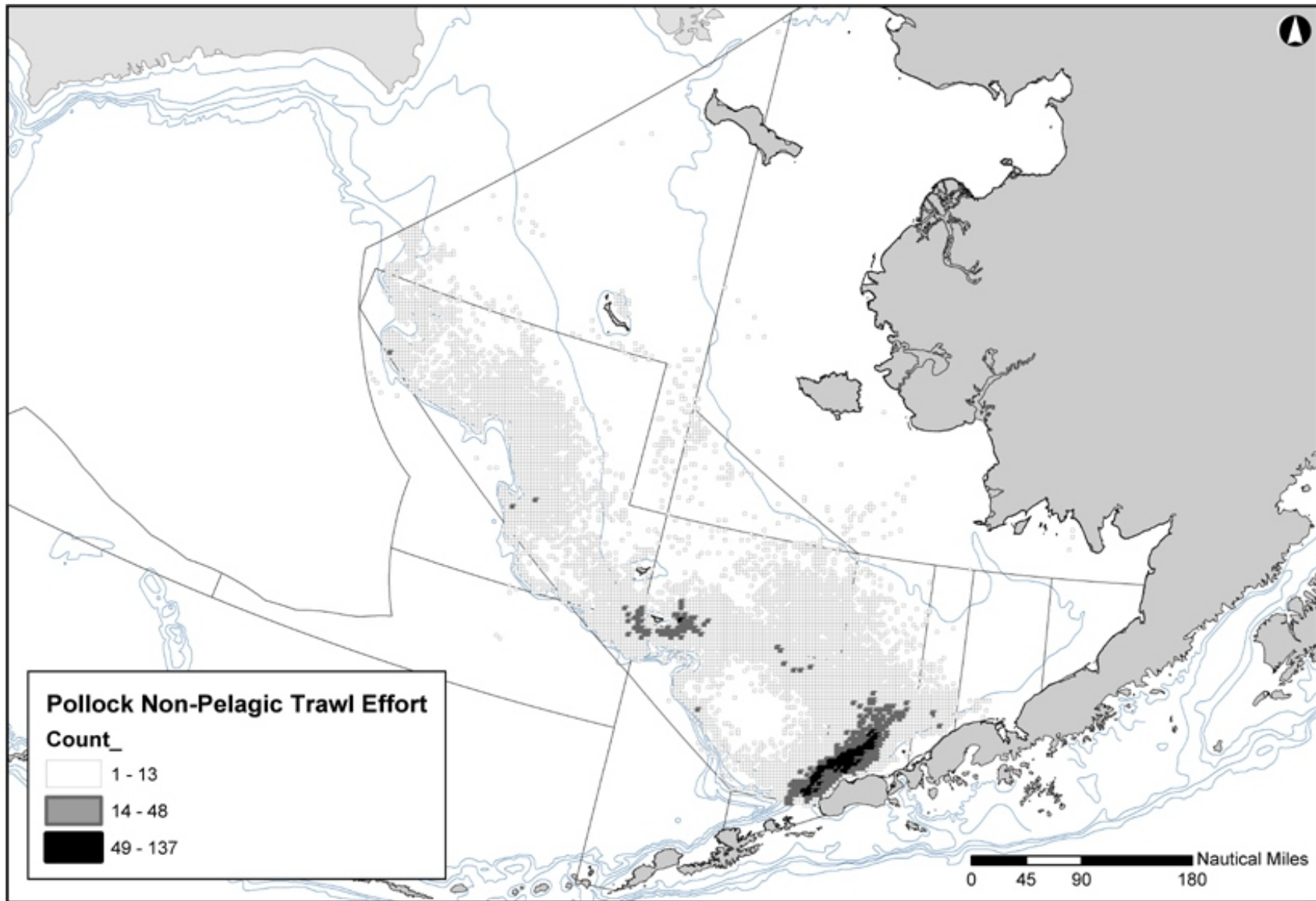
**Figure 3.4-16.** Bering Sea: 1990-2002 Observed Pollock Pelagic Trawl Effort (Sets/25 km<sup>2</sup>)



Note: (Sets/25 km<sup>2</sup>) = Summed for 1990 to 2002

Source: Cathy Coon, NPFMC Staff, North Pacific Observer Program Data

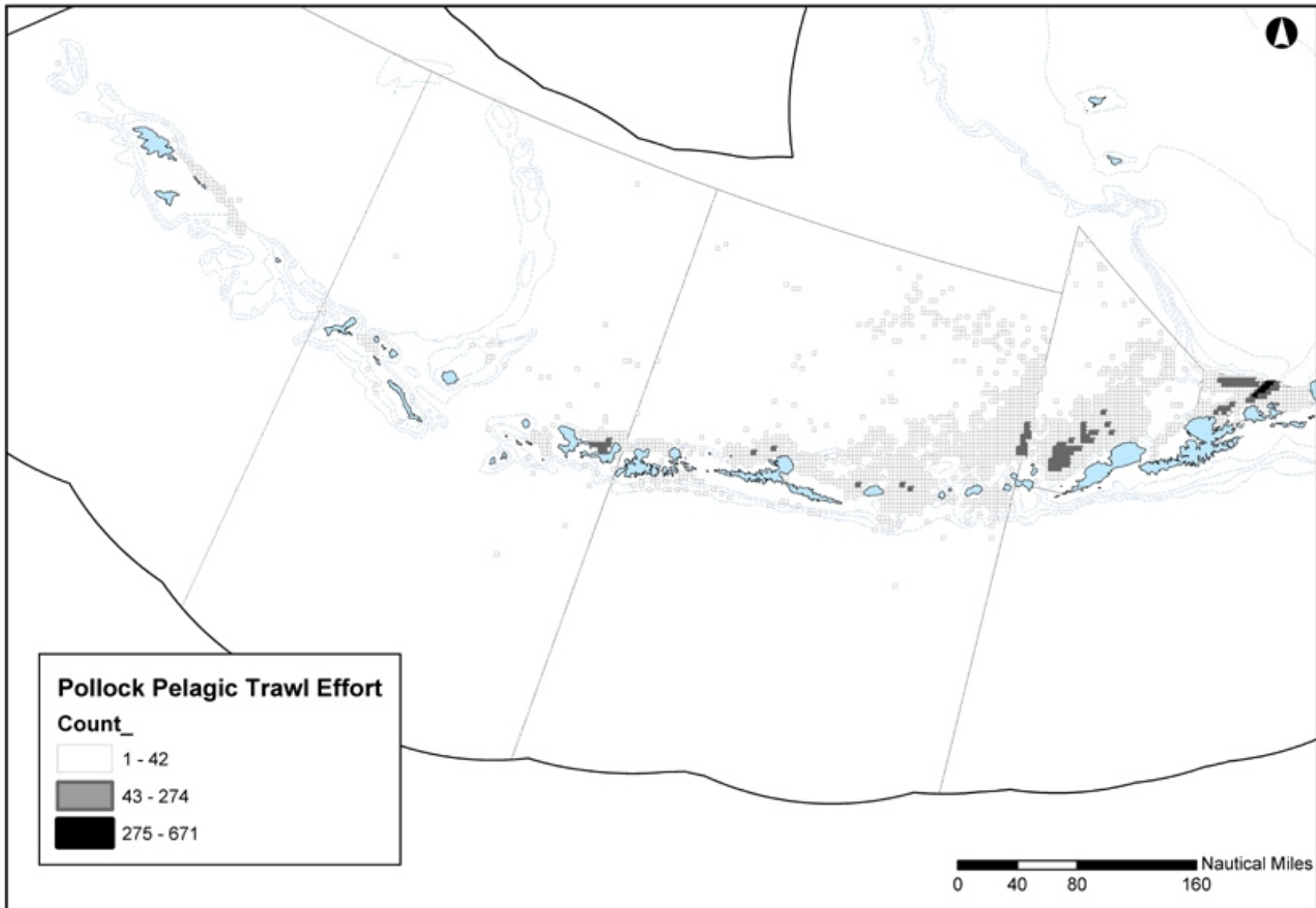
**Figure 3.4-17.** Bering Sea: 1990-2002 Observed Pollock Non-Pelagic (Bottom) Trawl Effort (Sets/25 km<sup>2</sup>)



Note: (Sets/25 km<sup>2</sup>) = Summed for 1990 to 2002

Source: Cathy Coon, NPFMC Staff, North Pacific Observer Program Data

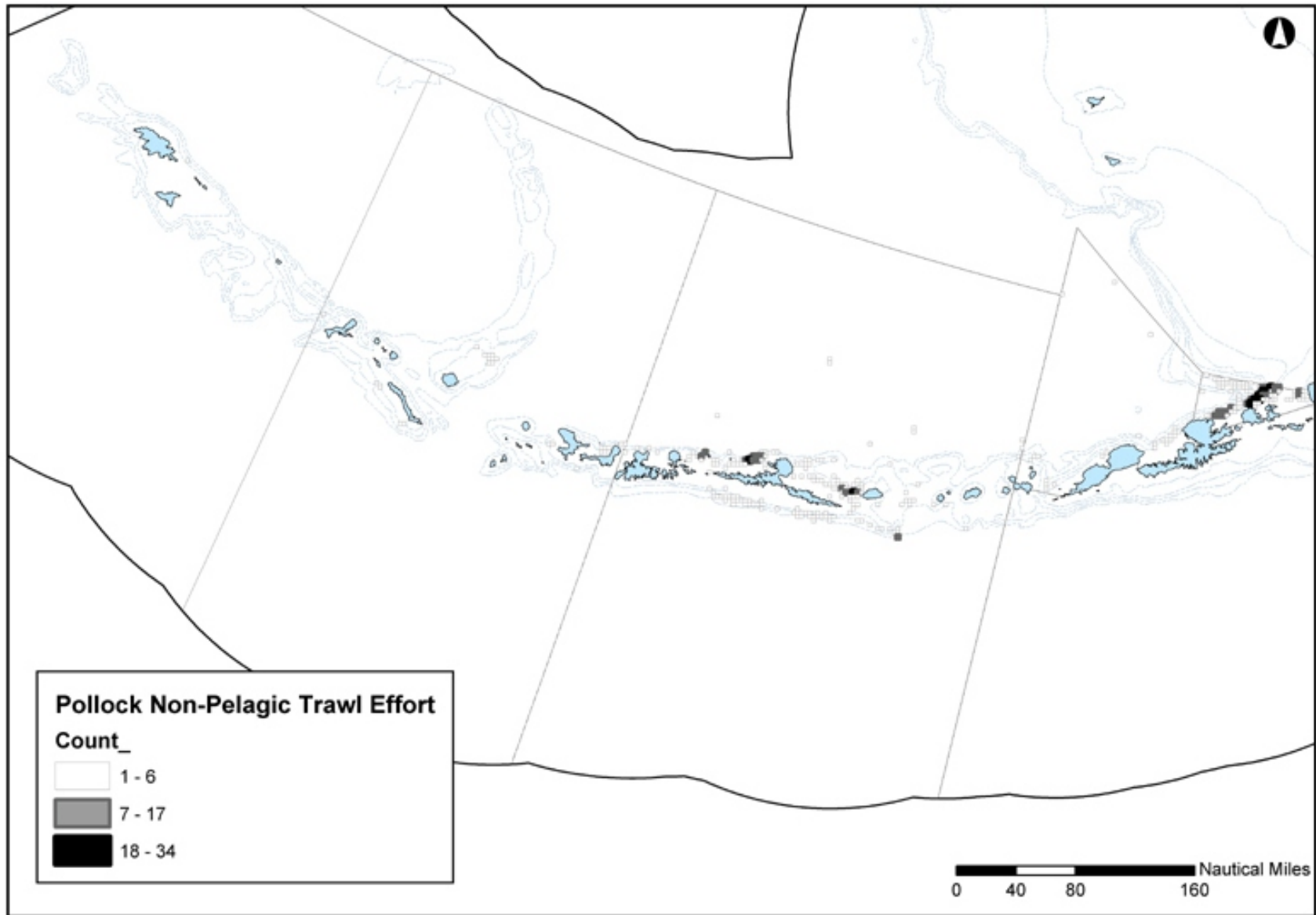
**Figure 3.4-18.** Aleutian Islands: 1990-2002 Observed Pollock Pelagic Trawl Effort (Sets/25 km<sup>2</sup>)



Note: (Sets/25 km<sup>2</sup>) = Summed for 1990 to 2002

Source: Cathy Coon, NPFMC Staff, North Pacific Observer Program Data

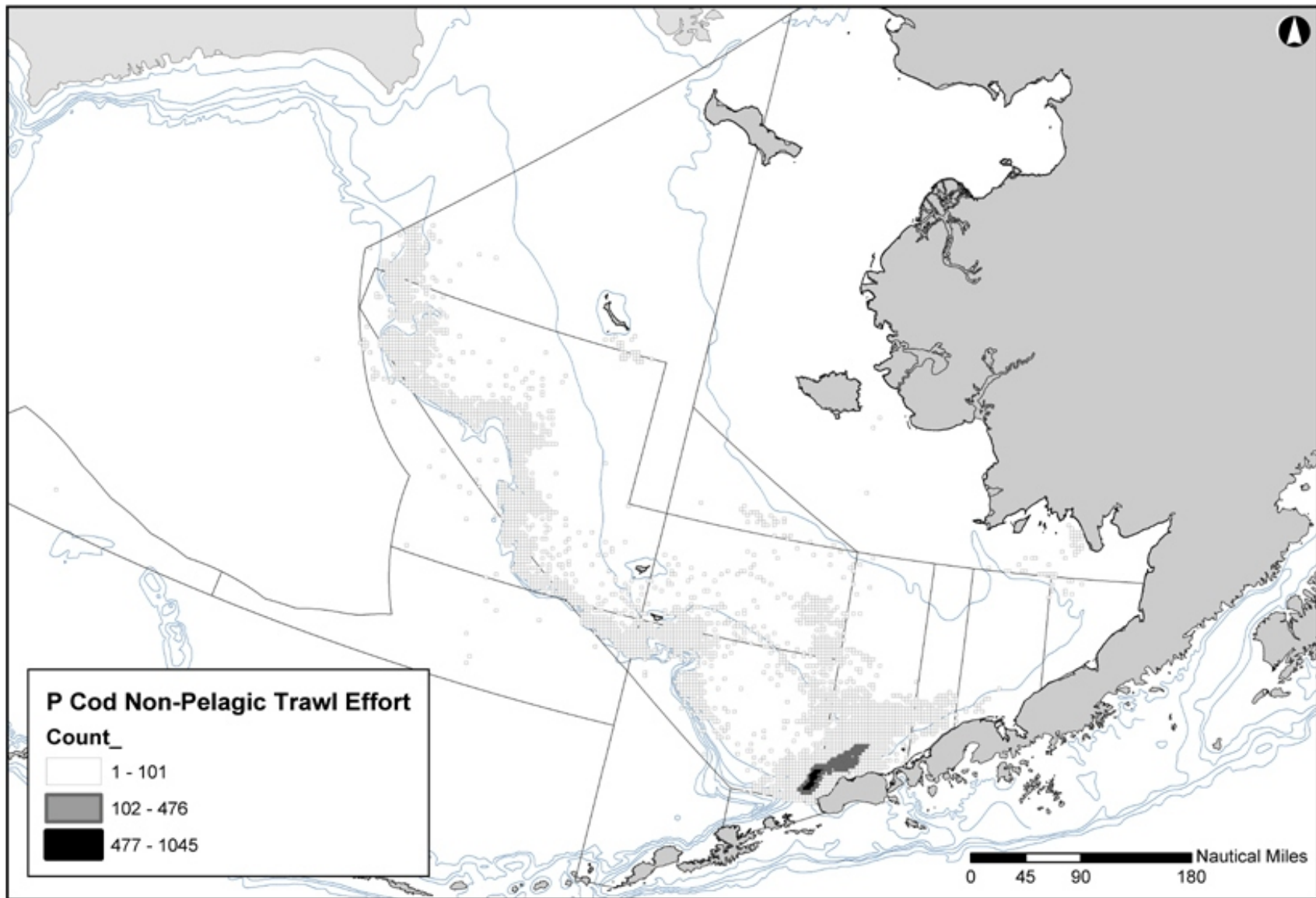
**Figure 3.4-19.** Aleutian Islands: 1990-2002 Observed Pollock Non-Pelagic (Bottom) Trawl Effort (Sets/25 km<sup>2</sup>)



Note: (Sets/25 km<sup>2</sup>) = Summed for 1990 to 2002

Source: Cathy Coon, NPFMC Staff, North Pacific Observer Program Data

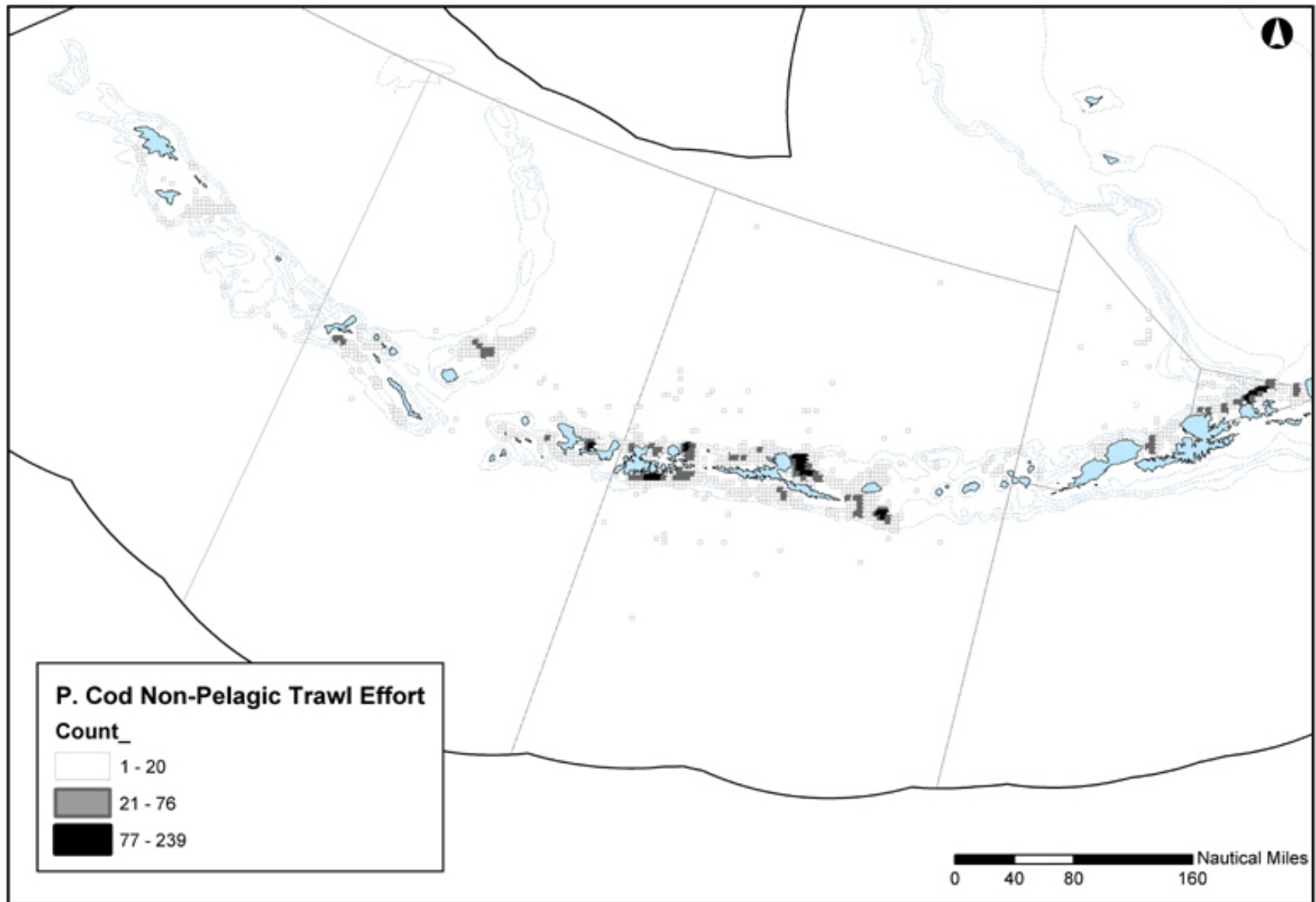
**Figure 3.4-20.** Bering Sea: 1990-2002 Observed Pacific Cod Non-Pelagic (Bottom) Trawl Effort (Sets/25 km<sup>2</sup>)



Note: (Sets/25 km<sup>2</sup>) = Summed for 1990 to 2002

Source: Cathy Coon, NPFMC Staff, North Pacific Observer Program Data

**Figure 3.4-21.** Aleutian Islands: 1990-2002 Observed Pacific Cod Non-Pelagic (Bottom) Trawl Effort (Sets/25 km<sup>2</sup>)

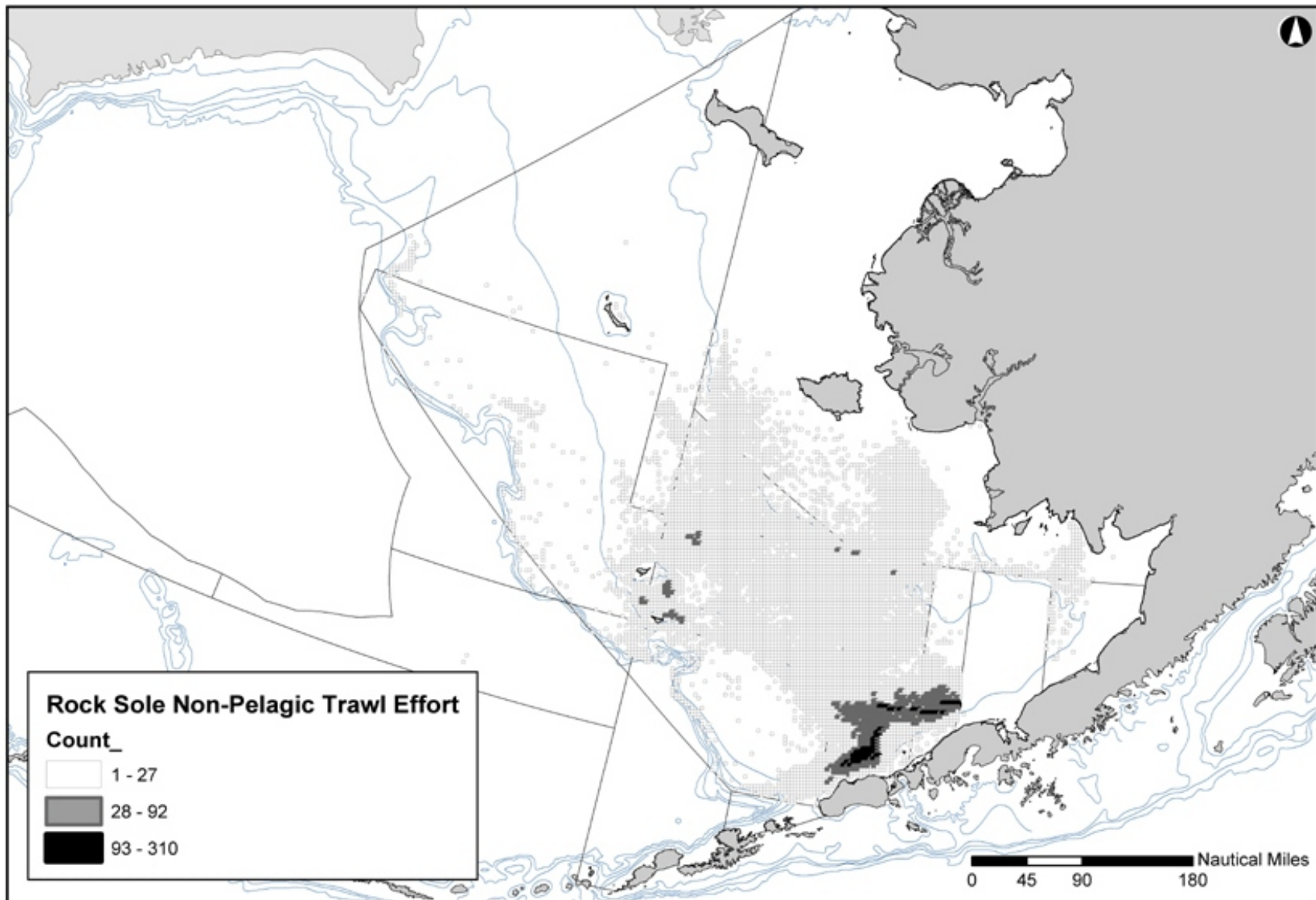


Note: (Sets/25 km<sup>2</sup>) = Summed for 1990 to 2002

Source: Cathy Coon, NPFMC Staff, North Pacific Observer Program Data



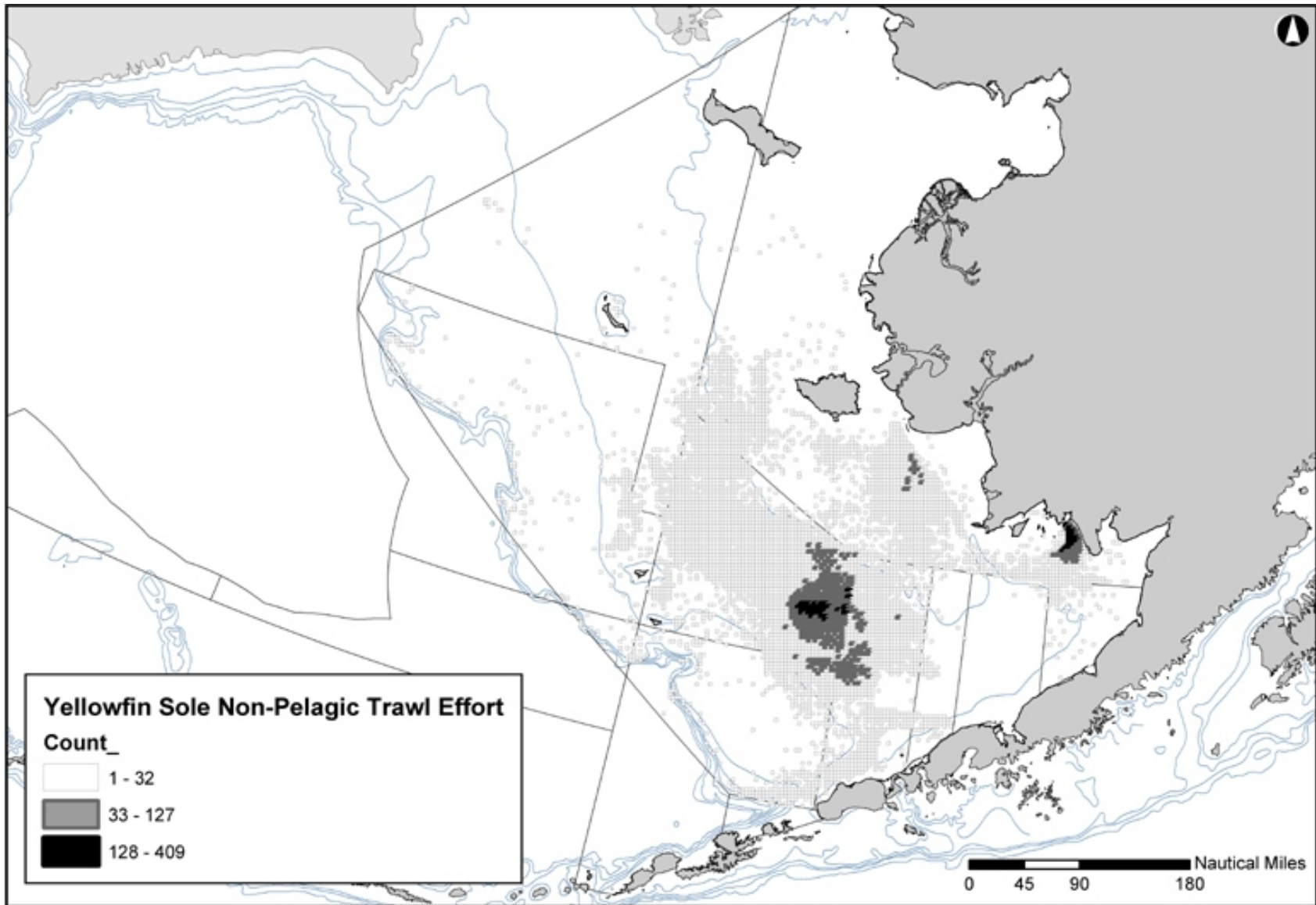
**Figure 3.4-22.** Bering Sea: 1990-2002 Observed Rock Sole Non-Pelagic (Bottom) Trawl Effort (Sets/25 km<sup>2</sup>)



Note: (Sets/25 km<sup>2</sup>) = Summed for 1990 to 2002

Source: Cathy Coon, NPFMC Staff, North Pacific Observer Program Data

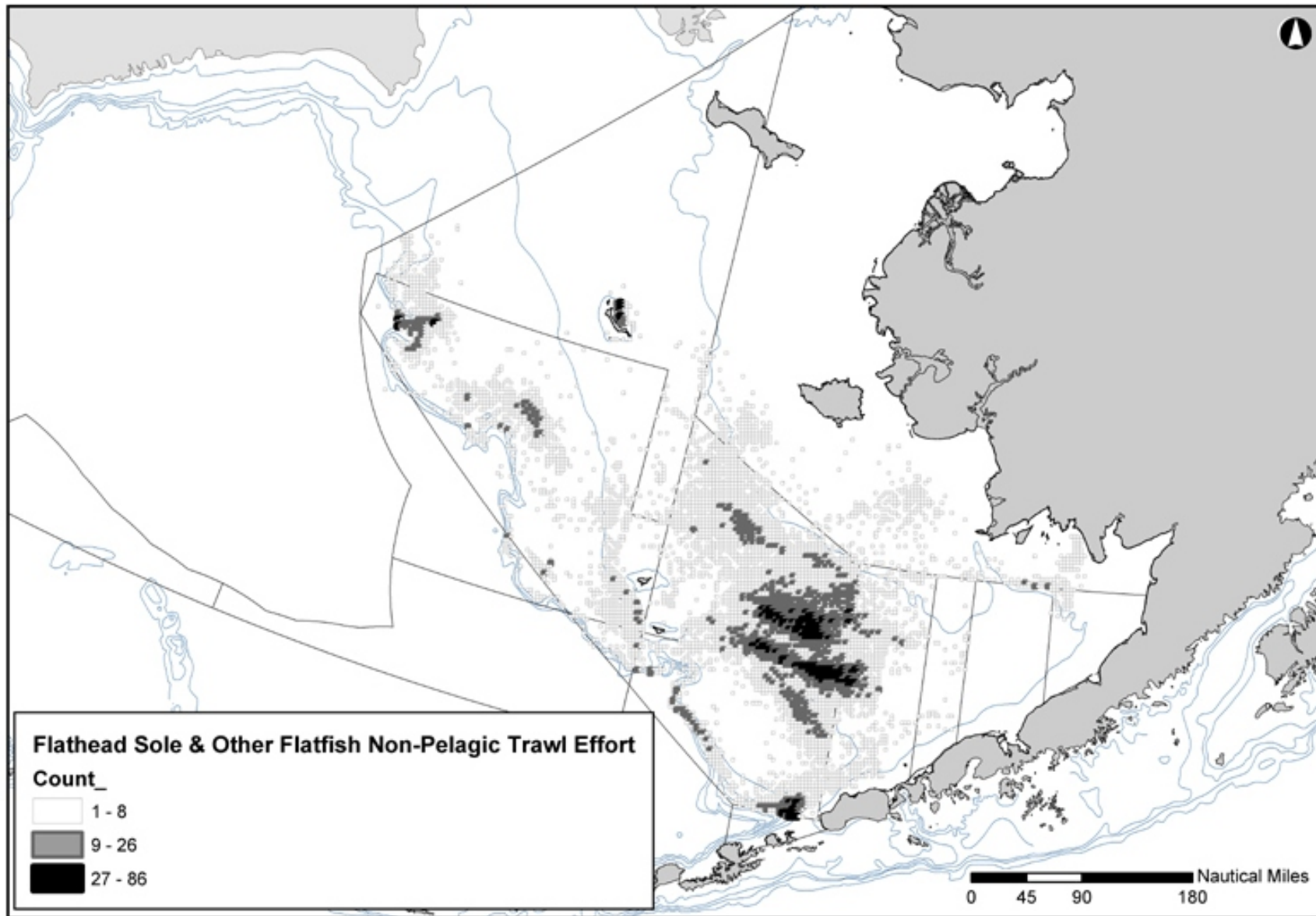
**Figure 3.4-23.** Bering Sea: 1990-2002 Observed Yellowfin Sole Non-Pelagic (Bottom) Trawl Effort (Sets/25 km<sup>2</sup>)



Note: (Sets/25 km<sup>2</sup>) = Summed for 1990 to 2002

Source: Cathy Coon, NPFMC Staff, North Pacific Observer Program Data

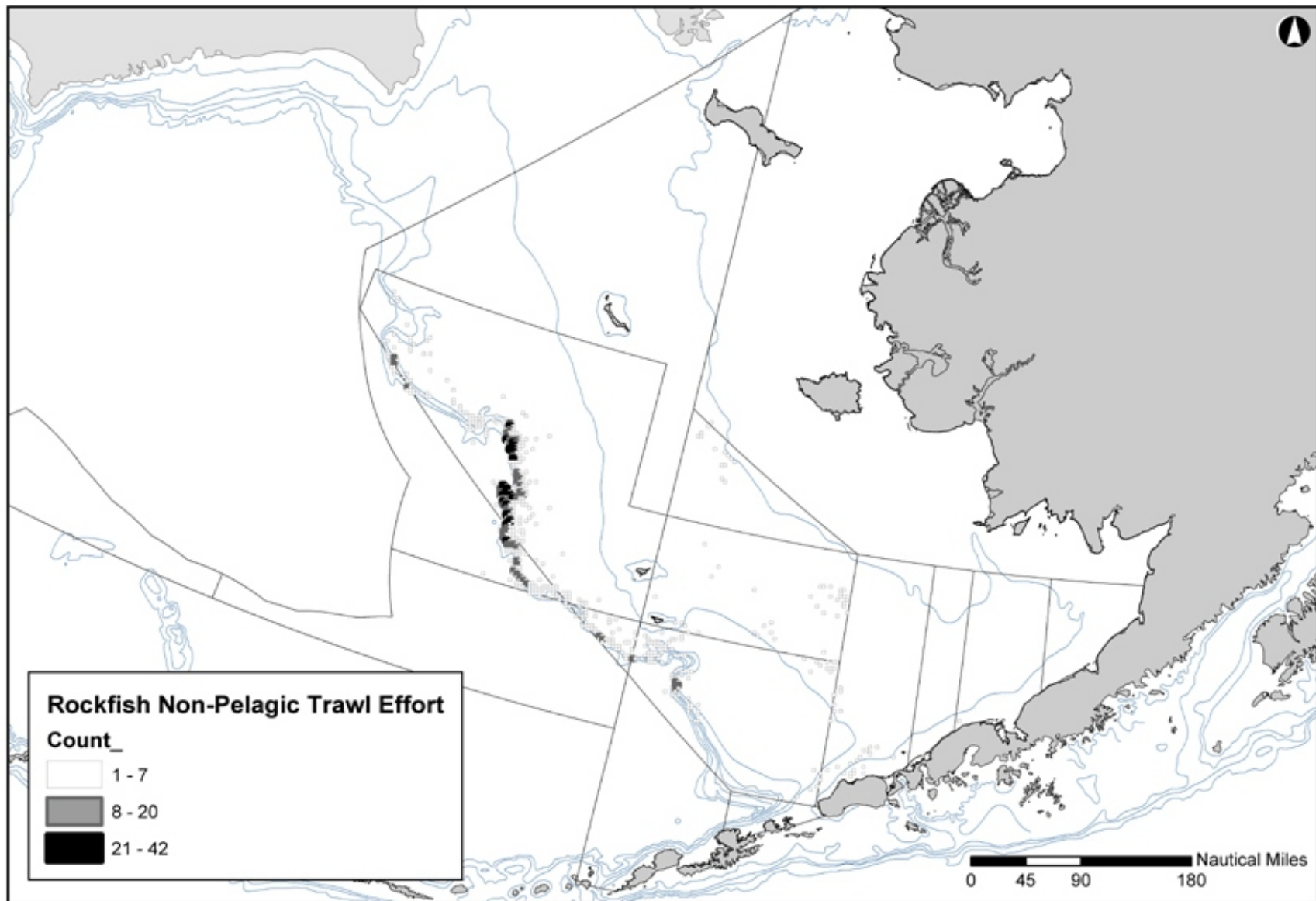
**Figure 3.4-24.** Bering Sea: 1990-2002 Observed Flathead Sole and Other Flatfish Non-Pelagic (Bottom) Trawl Effort (Sets/25 km<sup>2</sup>)



Note: (Sets/25 km<sup>2</sup>) = Summed for 1990 to 2002

Source: Cathy Coon, NPFMC Staff, North Pacific Observer Program Data

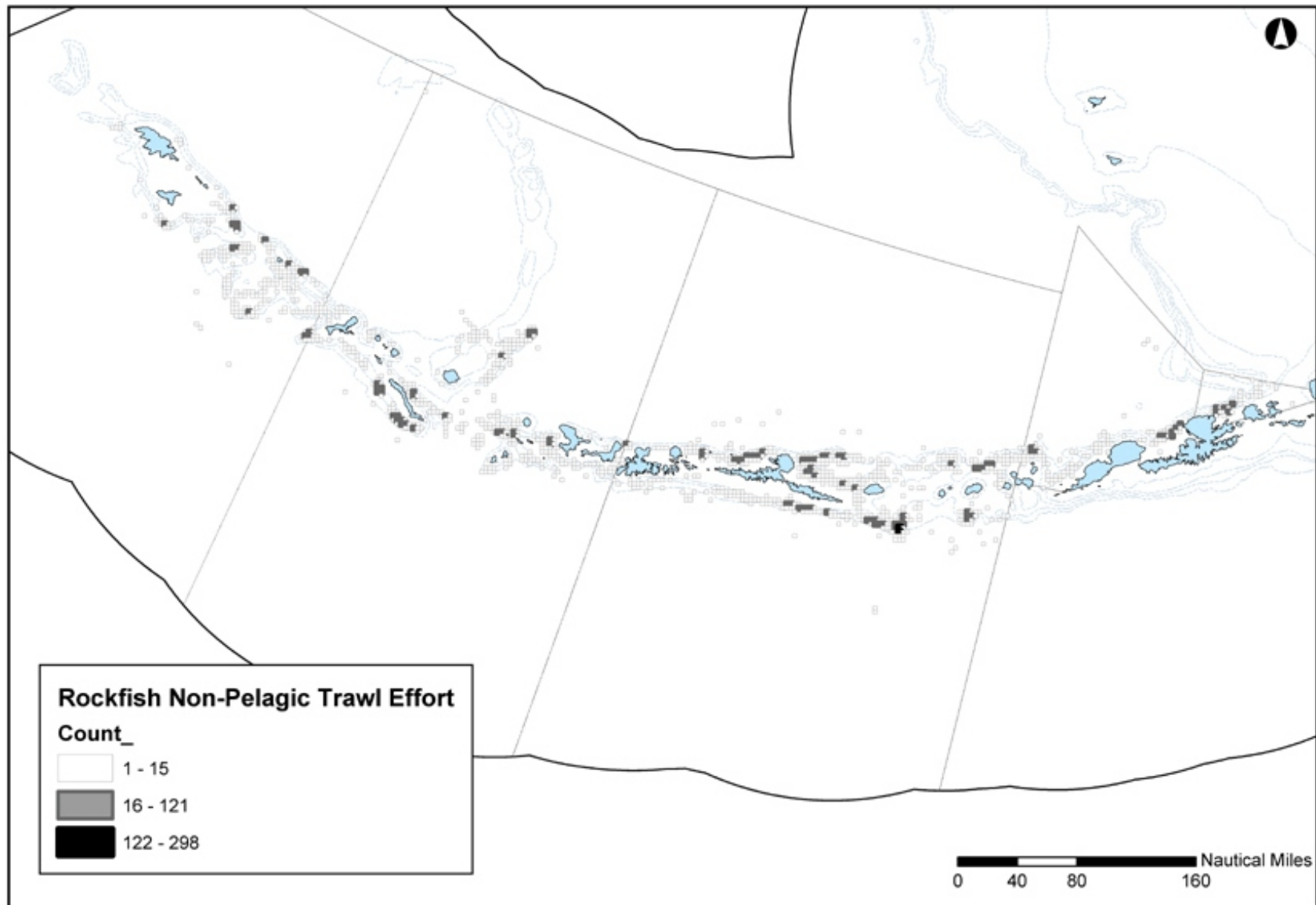
**Figure 3.4-25.** Bering Sea: 1990-2002 Observed Rockfish Non-Pelagic (Bottom) Trawl Effort (Sets/25 km<sup>2</sup>)



Note: (Sets/25 km<sup>2</sup>) = Summed for 1990 to 2002

Source: Cathy Coon, NPFMC Staff, North Pacific Observer Program Data

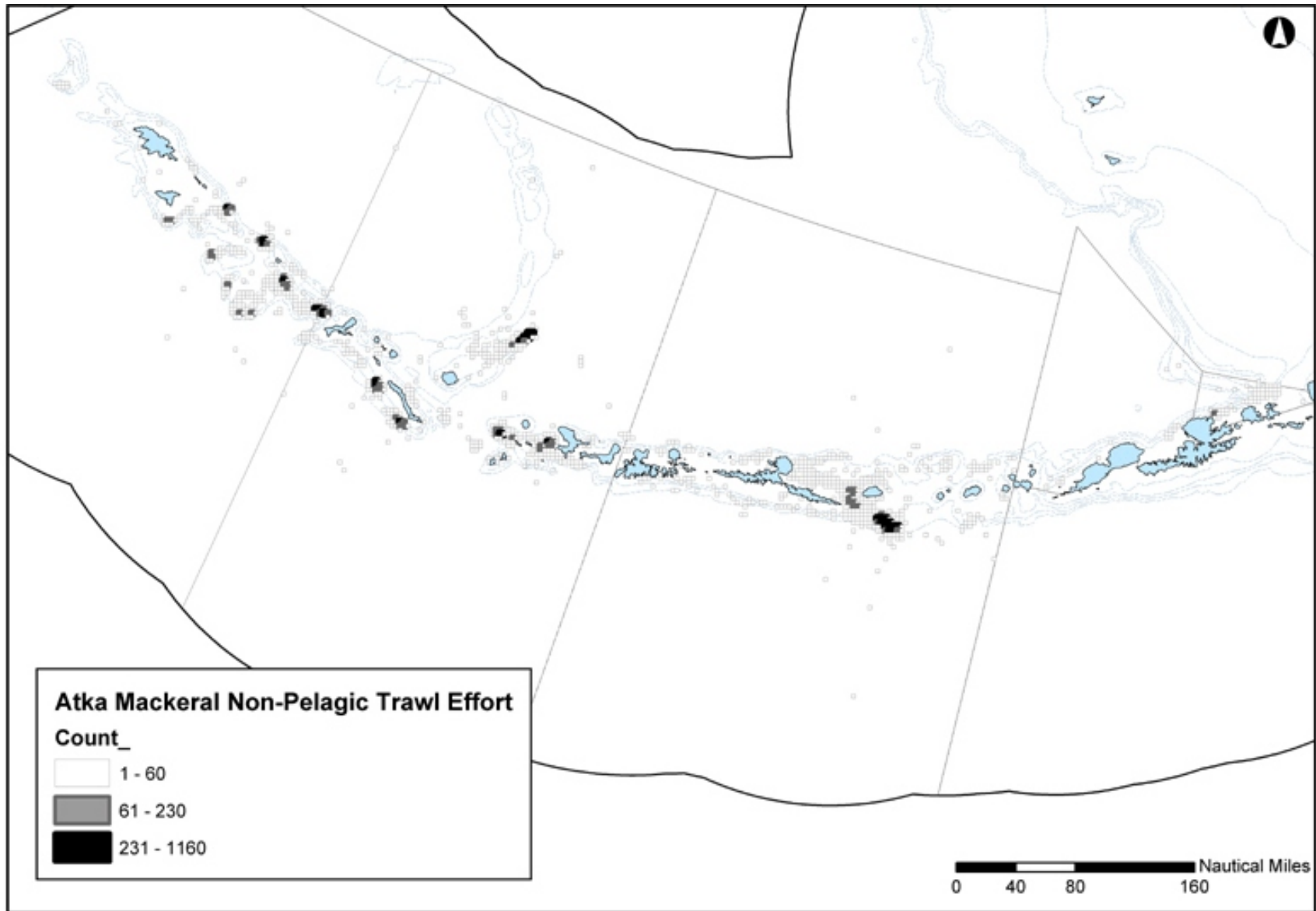
**Figure 3.4-26.** Aleutian Islands: 1990-2002 Observed Rockfish Non-Pelagic (Bottom) Trawl Effort (Sets/25 km<sup>2</sup>)



Note: (Sets/25 km<sup>2</sup>) = Summed for 1990 to 2002

Source: Cathy Coon, NPFMC Staff, North Pacific Observer Program Data

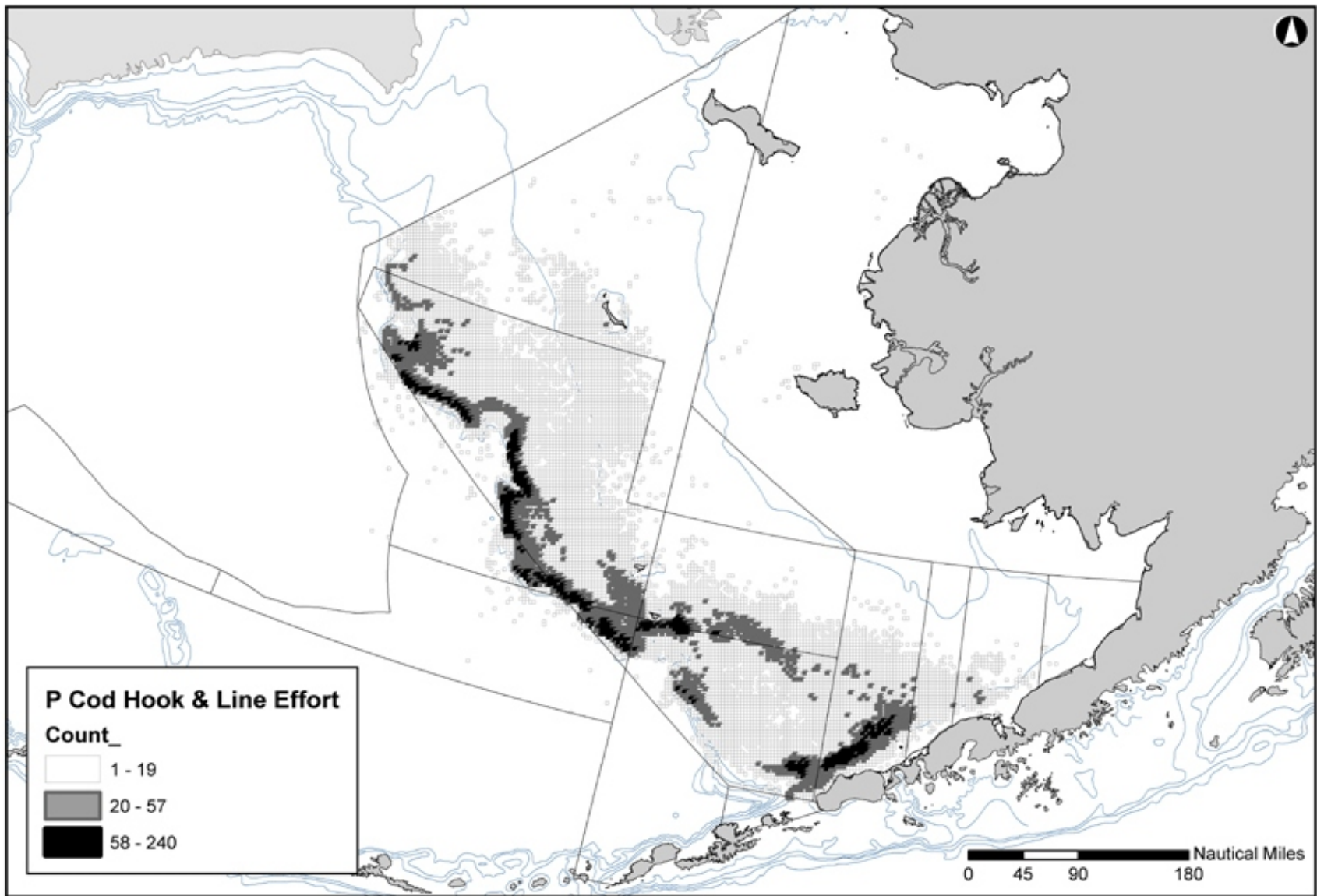
**Figure 3.4-27.** Aleutian Islands: 1990-2002 Observed Atka Mackerel Non-Pelagic (Bottom) Trawl Effort (Sets/25 km<sup>2</sup>)



Note: (Sets/25 km<sup>2</sup>) = Summed for 1990 to 2002

Source: Cathy Coon, NPFMC Staff, North Pacific Observer Program Data

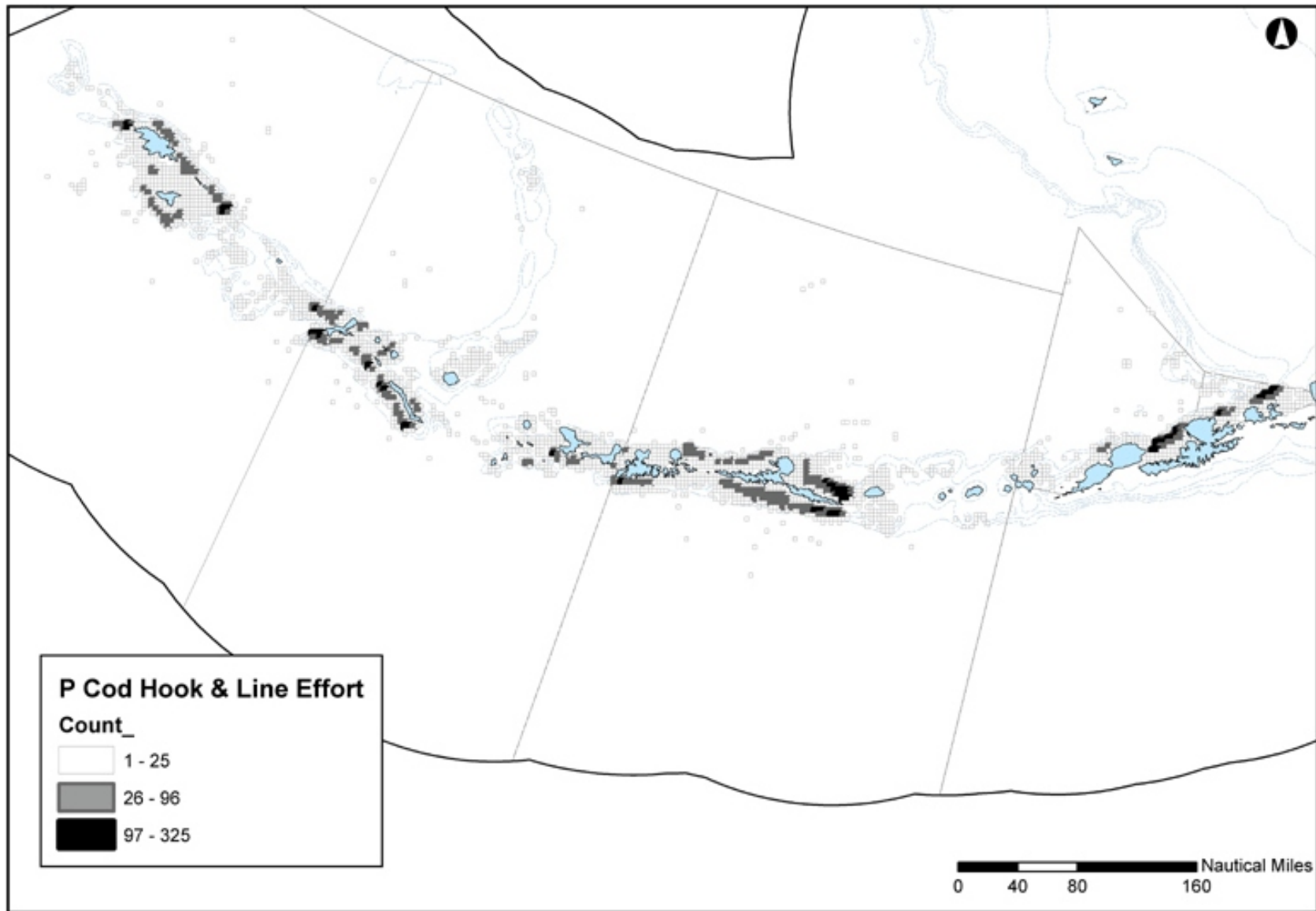
**Figure 3.4-28.** Bering Sea: 1990-2002 Observed Pacific Cod Hook and Line Effort (Sets/25 km<sup>2</sup>)



Note: (Sets/25 km<sup>2</sup>) = Summed for 1990 to 2002

Source: Cathy Coon, NPFMC Staff, North Pacific Observer Program Data

**Figure 3.4-29.** Aleutian Islands: 1990-2002 Observed Pacific Cod Hook and Line Effort (Sets/25 km<sup>2</sup>)

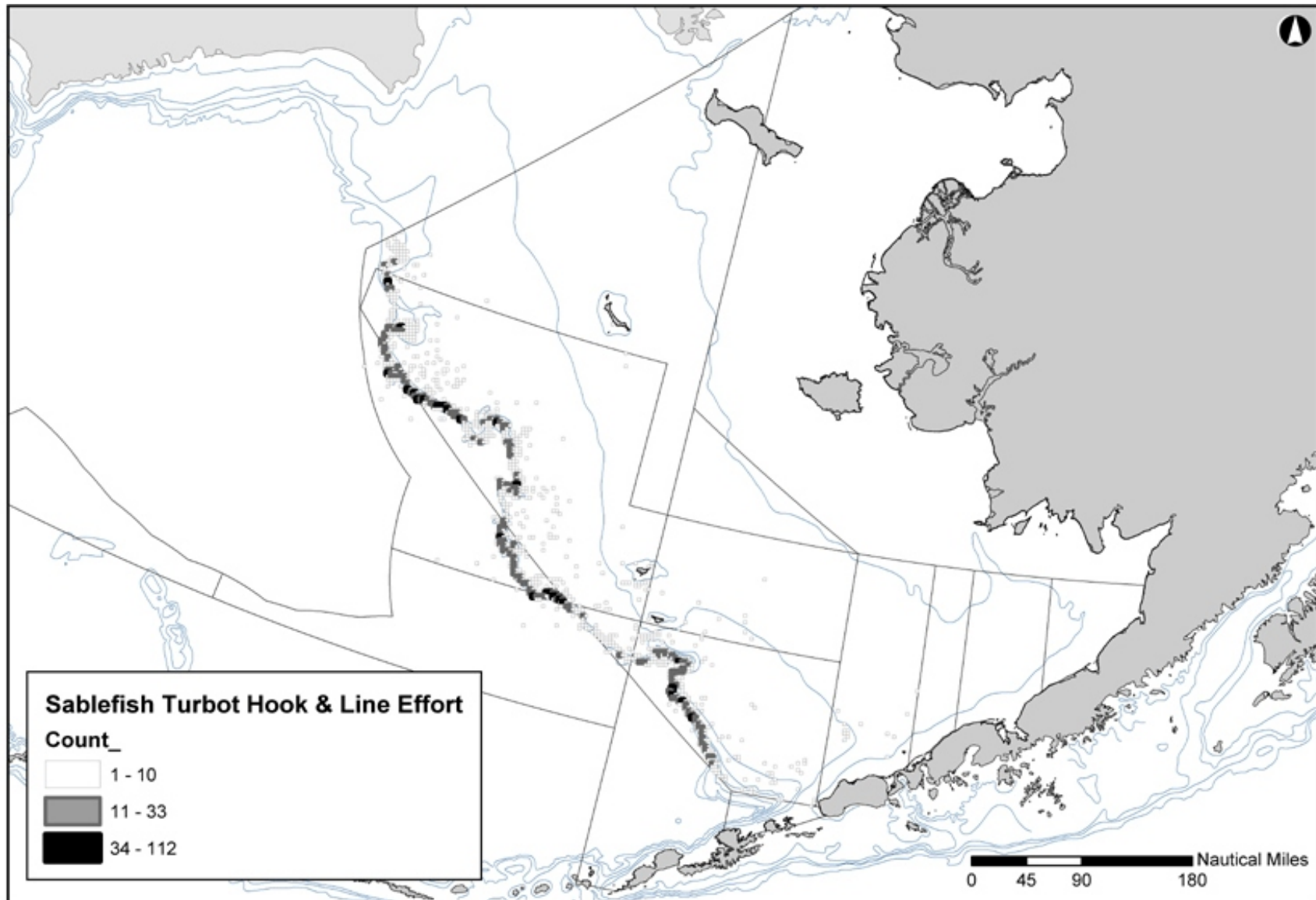


Note: (Sets/25 km<sup>2</sup>) = Summed for 1990 to 2002

Source: Cathy Coon, NPFMC Staff, North Pacific Observer Program Data



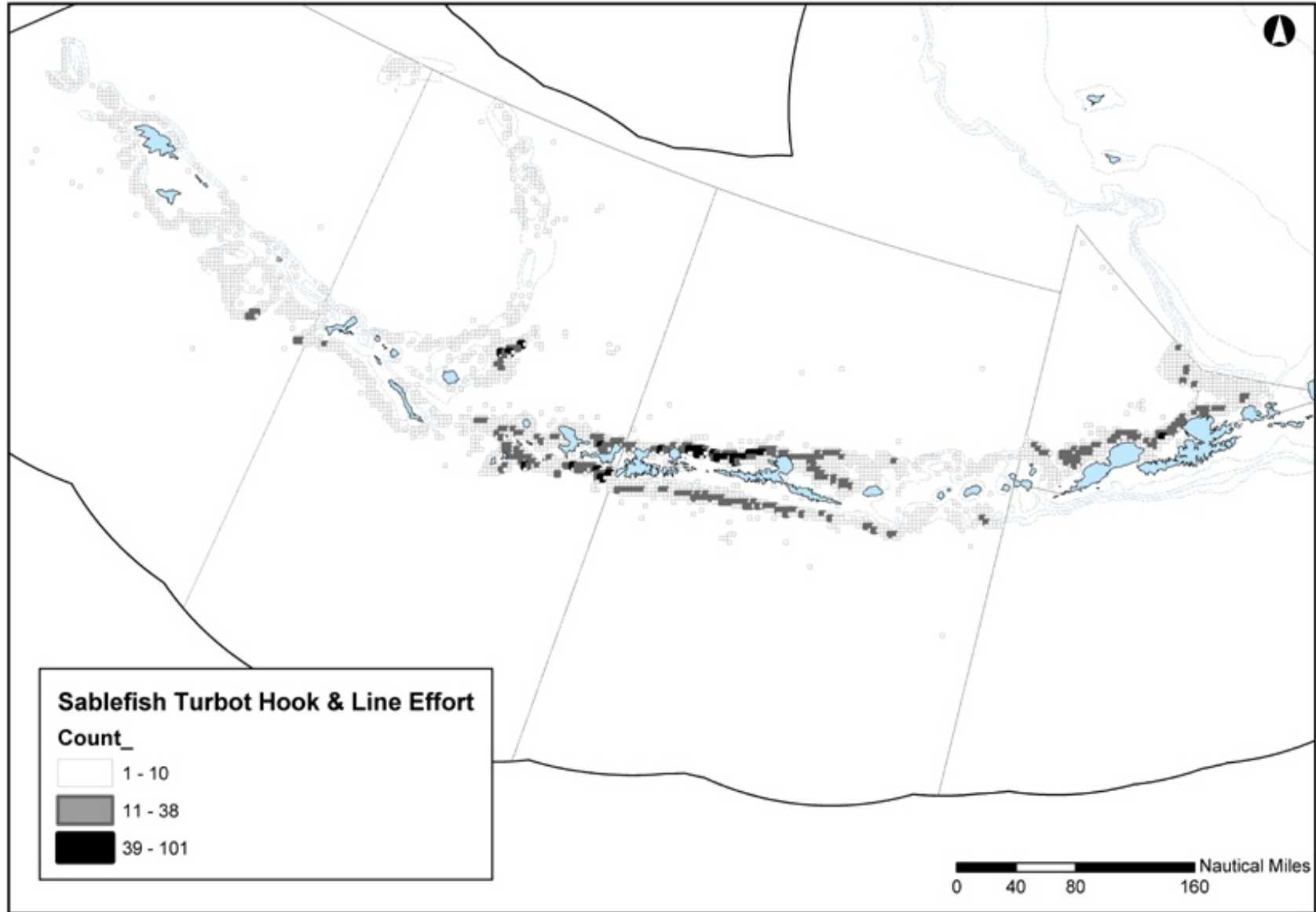
**Figure 3.4-30.** Bering Sea: 1990-2002 Observed Sablefish and Turbot Hook and Line Trawl Effort (Sets/25 km<sup>2</sup>)



Note: (Sets/25 km<sup>2</sup>) = Summed for 1990 to 2002

Source: Cathy Coon, NPFMC Staff, North Pacific Observer Program Data

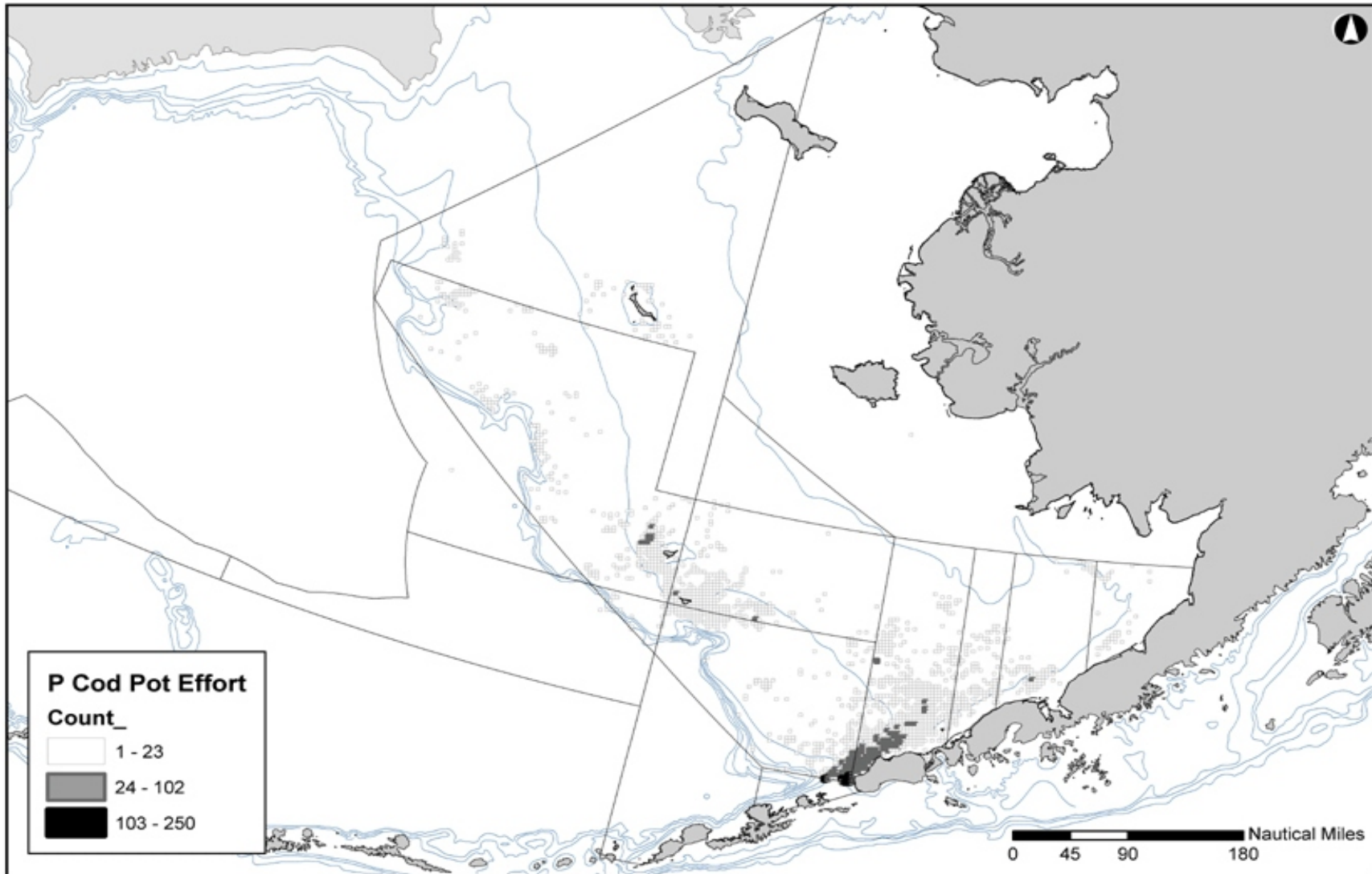
**Figure 3.4-31.** Aleutian Islands: 1990-2002 Observed Sablefish and Turbot Hook and Line Effort (Sets/25 km<sup>2</sup>)



Note: (Sets/25 km<sup>2</sup>) = Summed for 1990 to 2002

Source: Cathy Coon, NPFMC Staff, North Pacific Observer Program Data

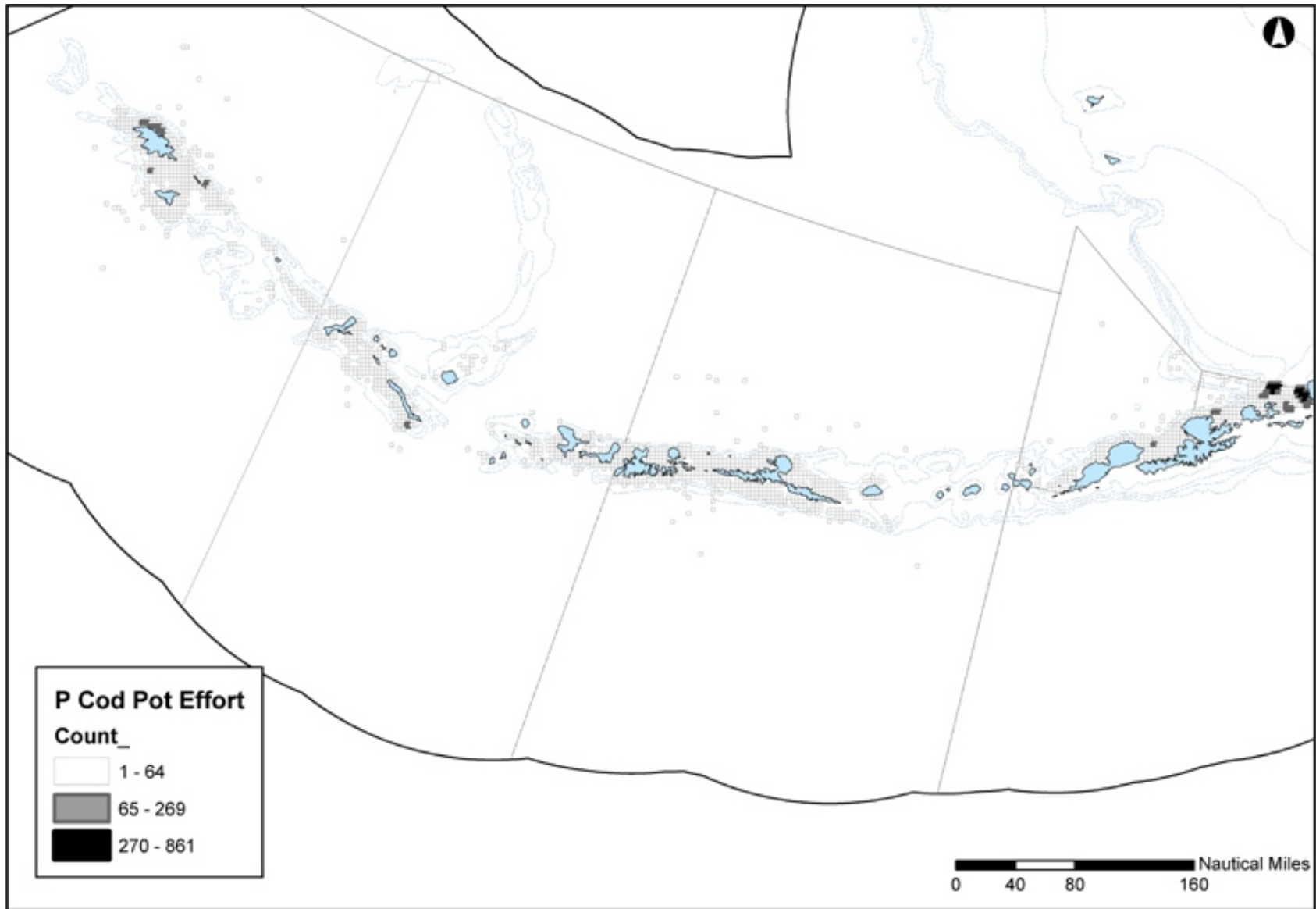
**Figure 3.4-32.** Bering Sea: 1990-2002 Observed Pacific Cod Pot Effort (Sets/25 km<sup>2</sup>)



Note: (Sets/25 km<sup>2</sup>) = Summed for 1990 to 2002

Source: Cathy Coon, NPFMC Staff, North Pacific Observer Program Data

**Figure 3.4-33.** Aleutian Islands: 1990-2002 Observed Pacific Cod Pot Effort (Sets/25 km<sup>2</sup>)

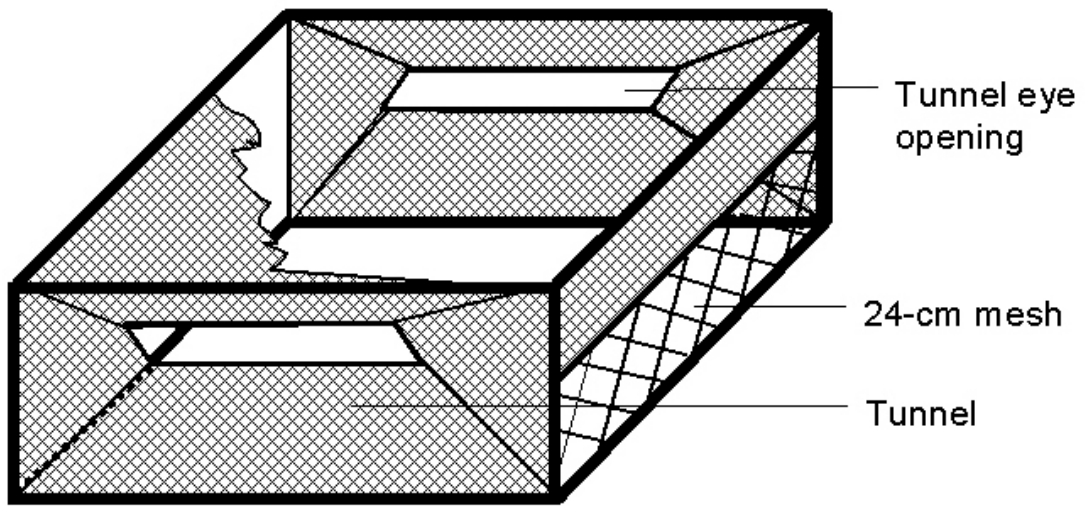


Note: (Sets/25 km<sup>2</sup>) = Summed for 1990 to 2002

Source: Cathy Coon, NPFMC Staff, North Pacific Observer Program Data

**Figure 3.4-34.** Crab Pot/Pacific Cod Pot

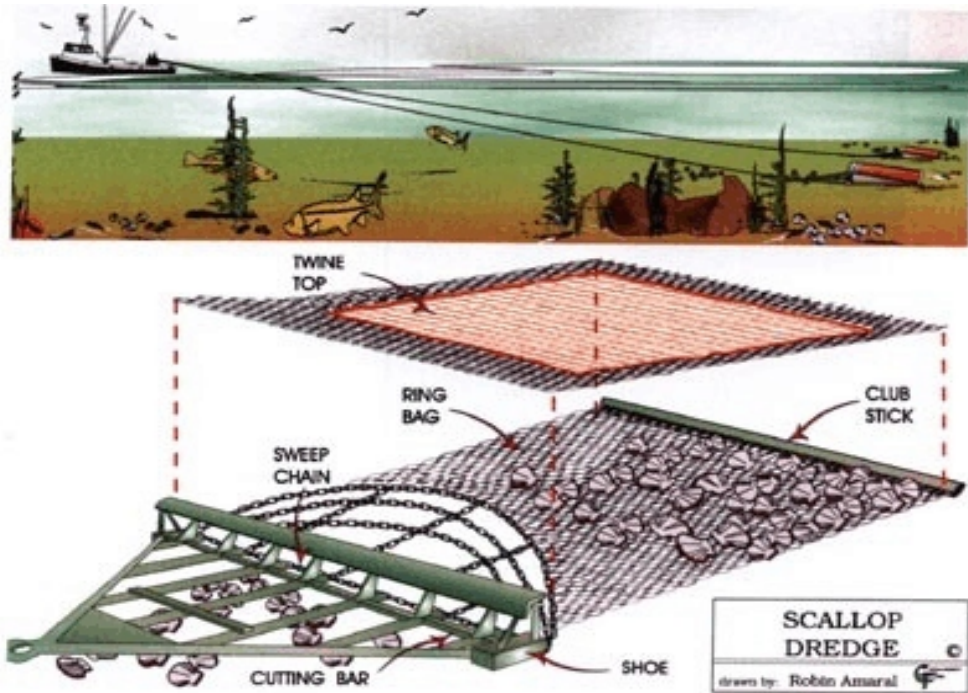
Standard pot



Source: Alaska Department of Fish and Game

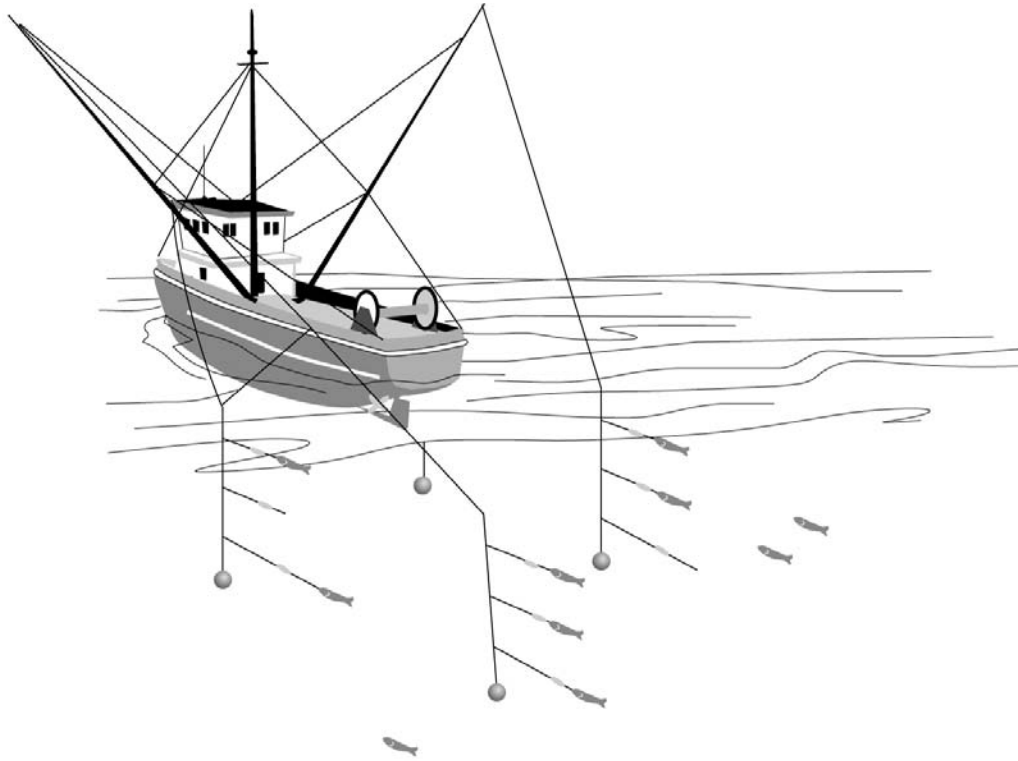
Figure 3.4-35. Scallop Dredge, The New Bedford Style

**SMOLOWITZ**  
**FIGURE 2**  
**(page 48)**  
The New Bedford style scallop dredge, with top removed for illustration. Drawing by Robin Amaral.



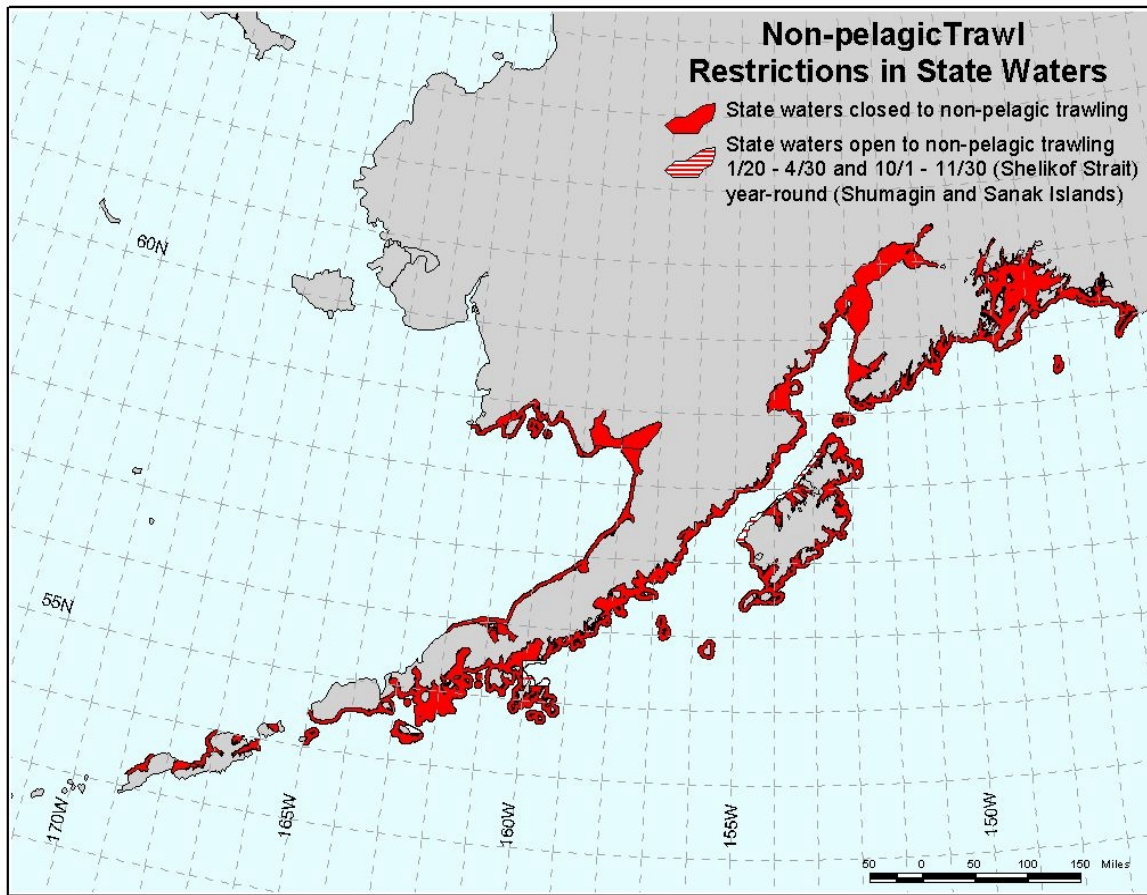
Source: Smolowitz.1998

**Figure 3.4-36. Salmon Troll**



Source: K. Richards, Tetra Tech FW, Bothell, WA

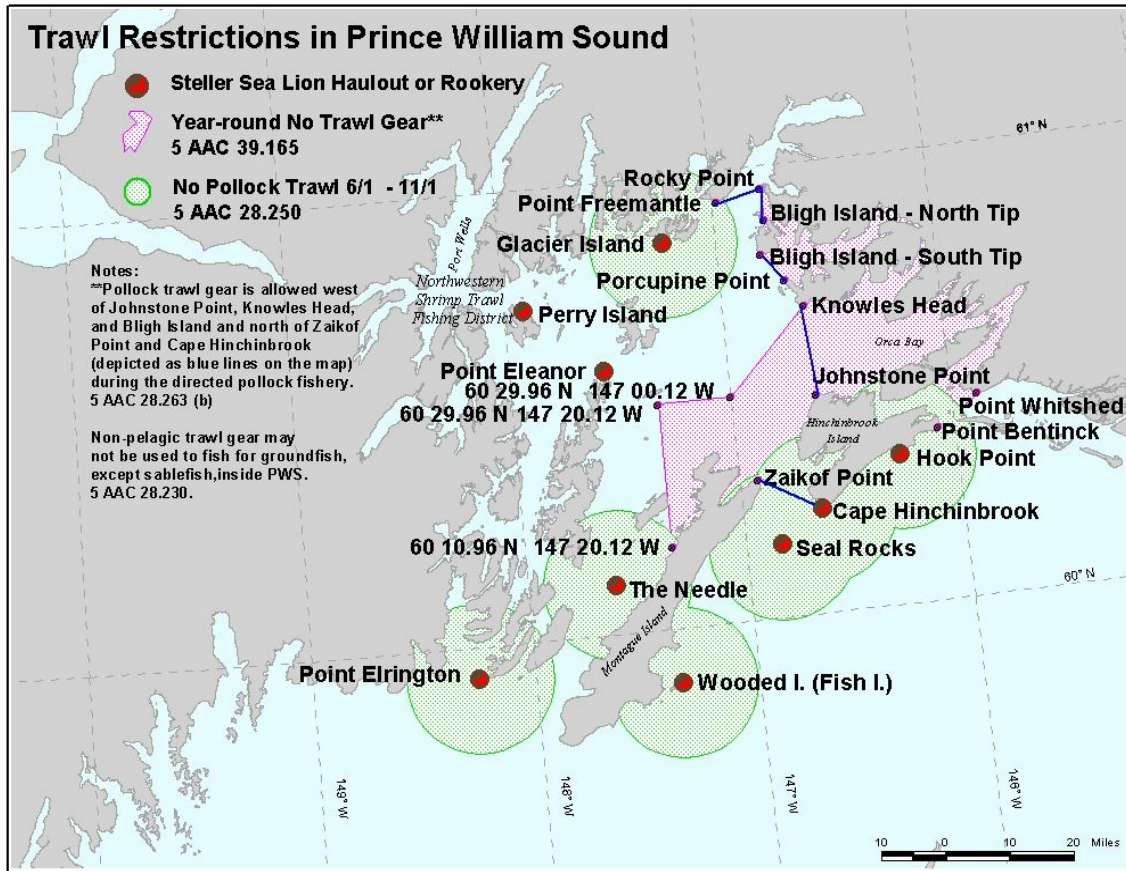
**Figure 3.4-37.** Year-round Non-pelagic Trawl Closure Areas (shaded areas) in State Waters of the Central and Western Gulf of Alaska and Southeastern Bering Sea



Source: NMFS 2001b

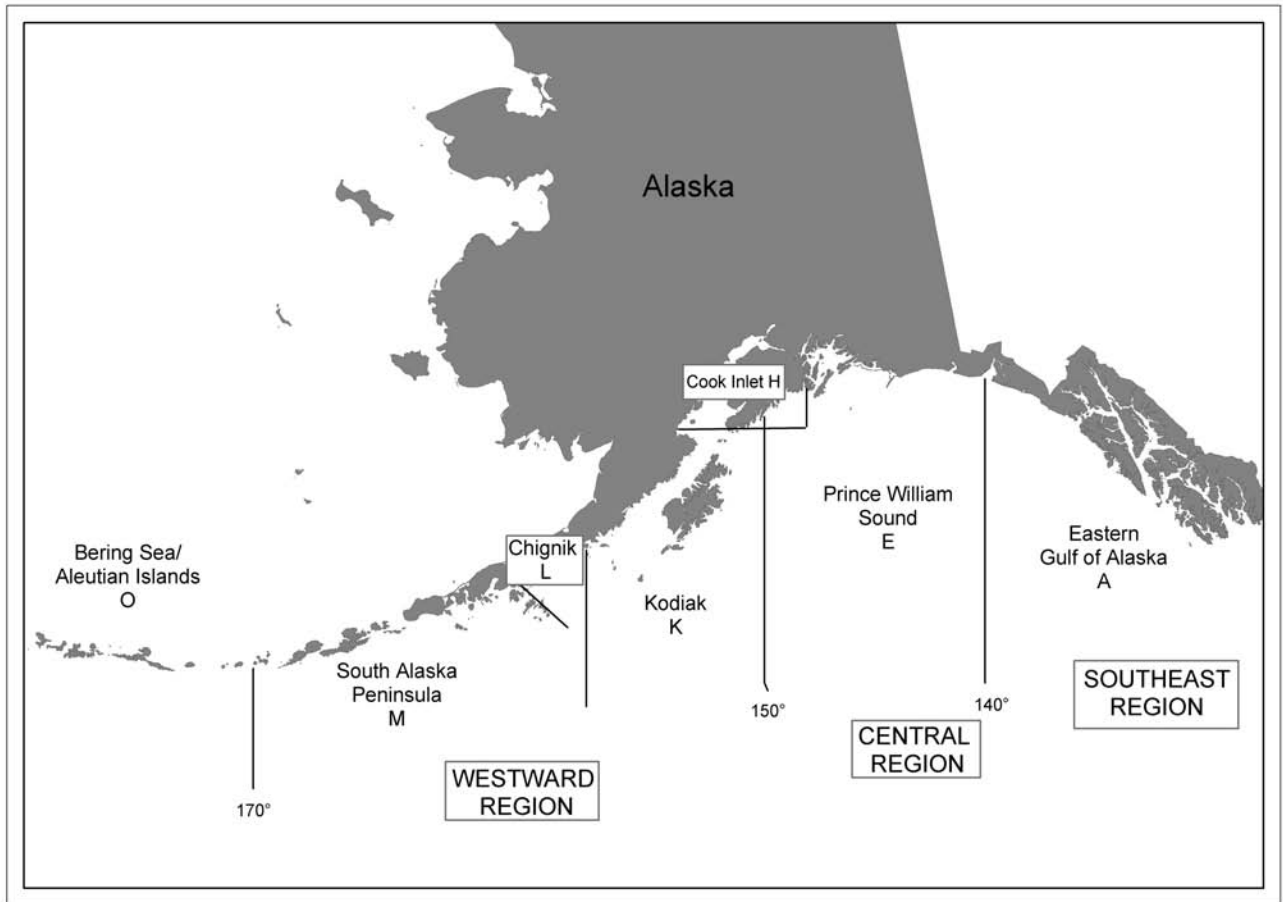


Figure 3.4-38. Year-round and Seasonal Trawl Restrictions in Prince William Sound



Source: NMFS 2001b

**Figure 3.4-39.** State Groundfish Regions



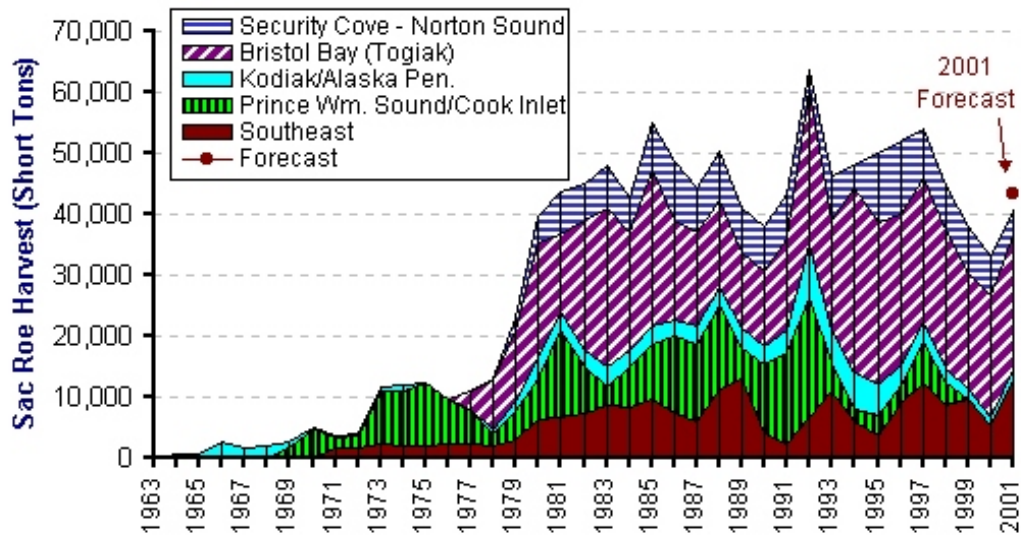
Source: ADF&G 2002c

Figure 3.4-40. Alaskan Herring Fisheries



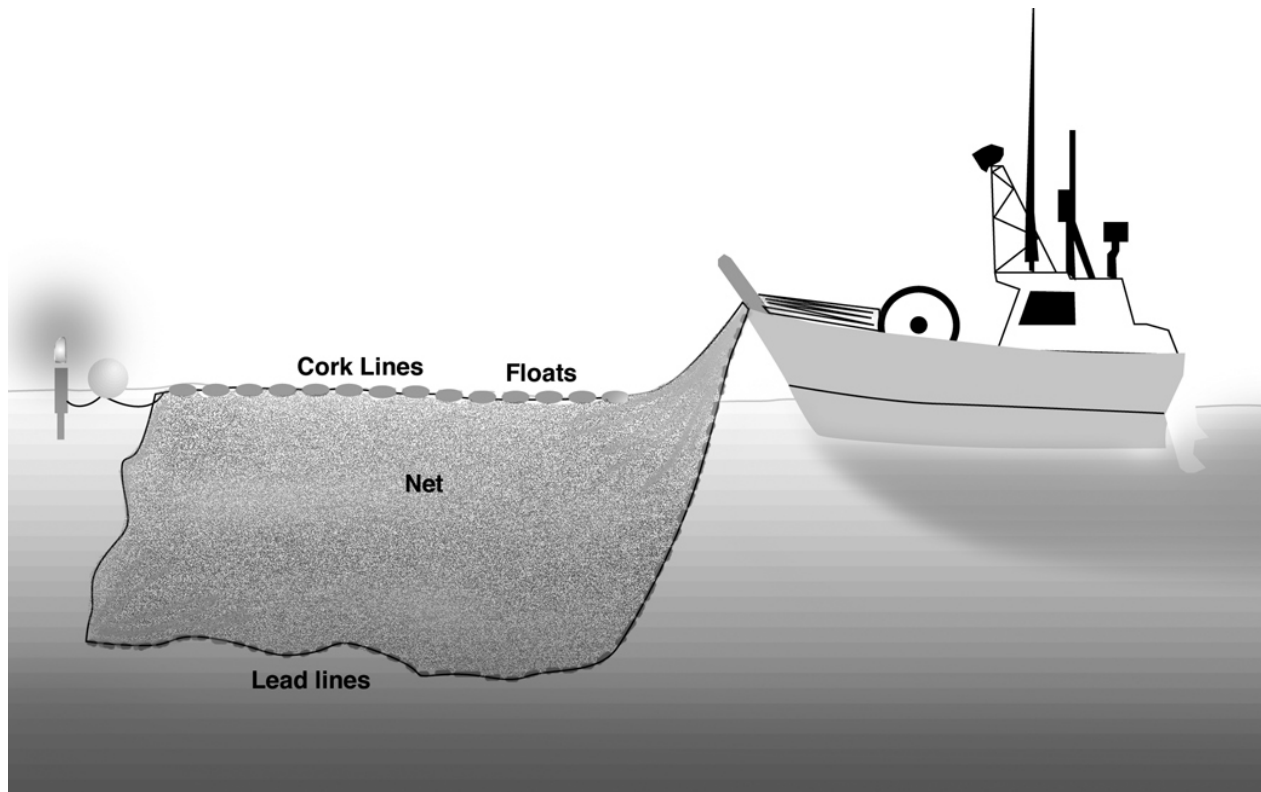
Source: ADF&G 2002a

Figure 3.4-41. Herring Sac Roe Harvests, 1963-2001



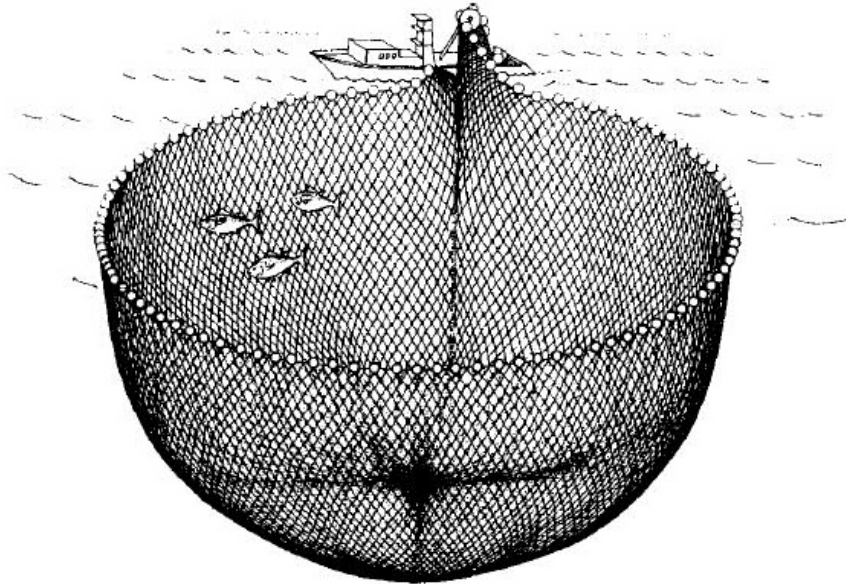
Source: ADF&G 2001

**Figure 3.4-42. Drift Gillnet**



Source: K. Richards, Tetra Tech FW, Bothell, WA

**Figure 3.4-43. Purse Seine Gear**



Source: ©Blackwell Science (Jennings et al. 2001)  
Permission to use figure requested by Craig Rose (pending)