

Figure 2-39. Alternative 6: Essential Fish Habitat for Late Juvenile and Adult BSAI Pacific Cod

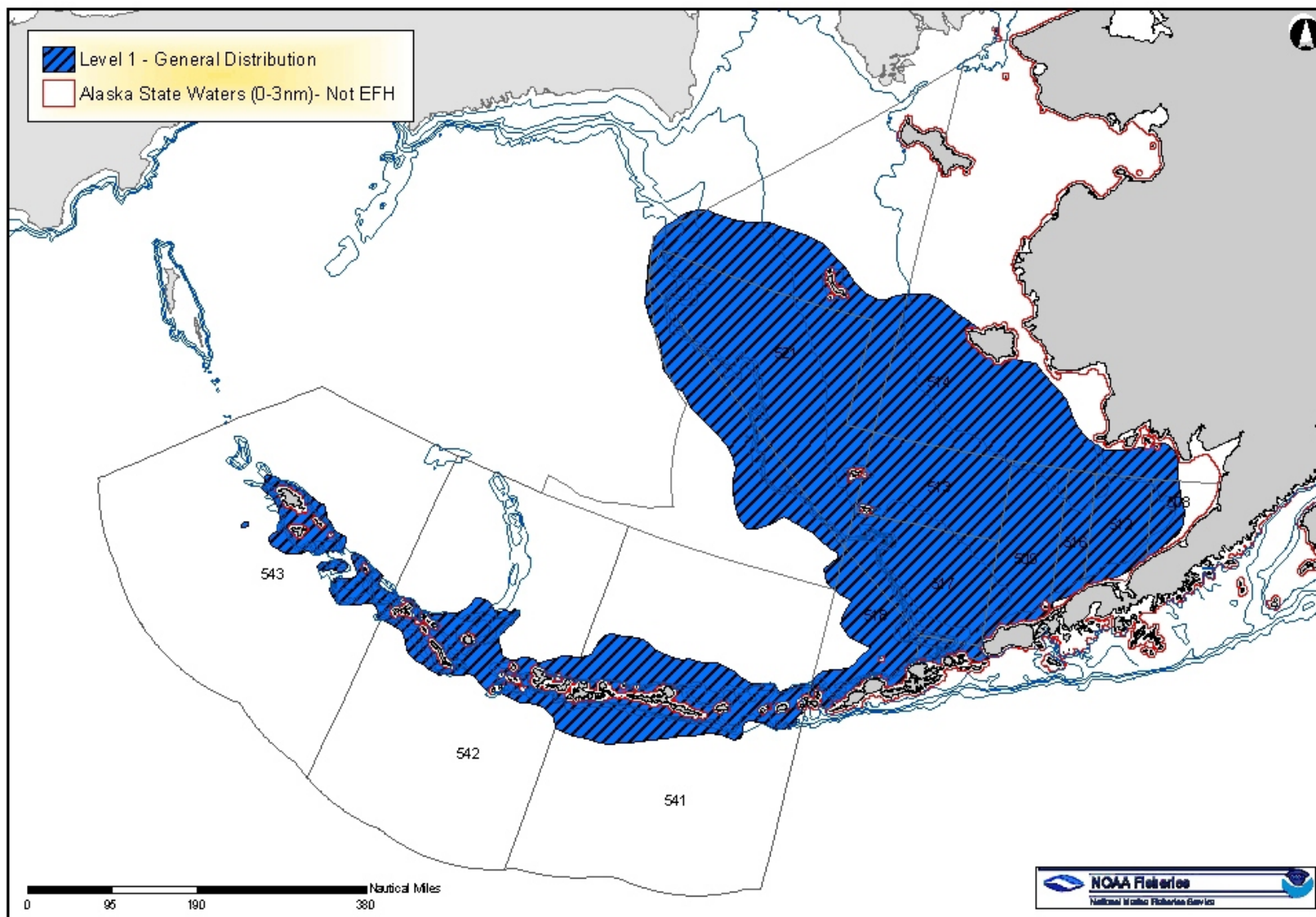


Figure 2-40. Alternative 6: Essential Fish Habitat for BSAI Golden King Crab

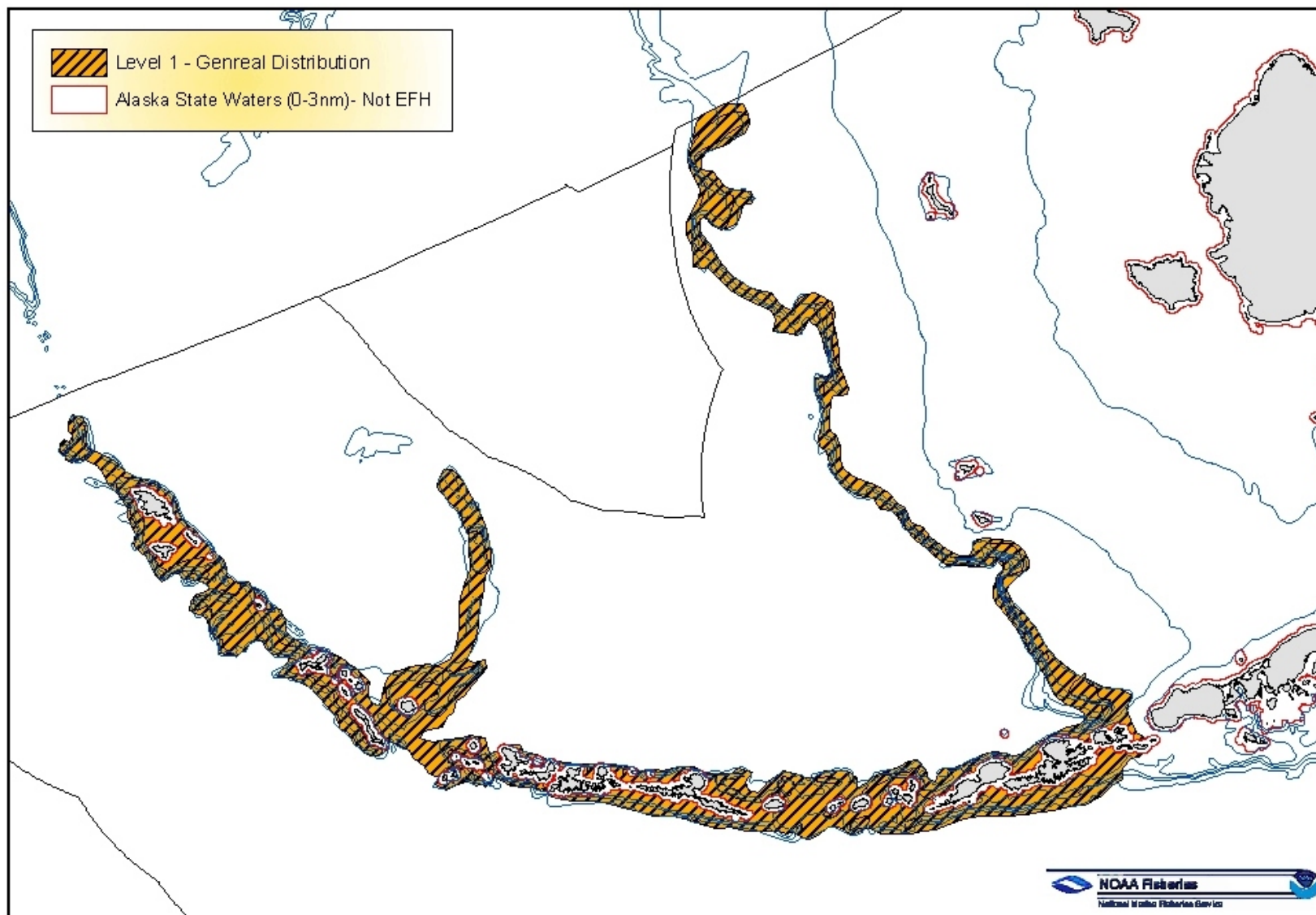


Figure 2-41. Alternative 6: Essential Fish Habitat for Late Juvenile and Adult Weathervane Scallops

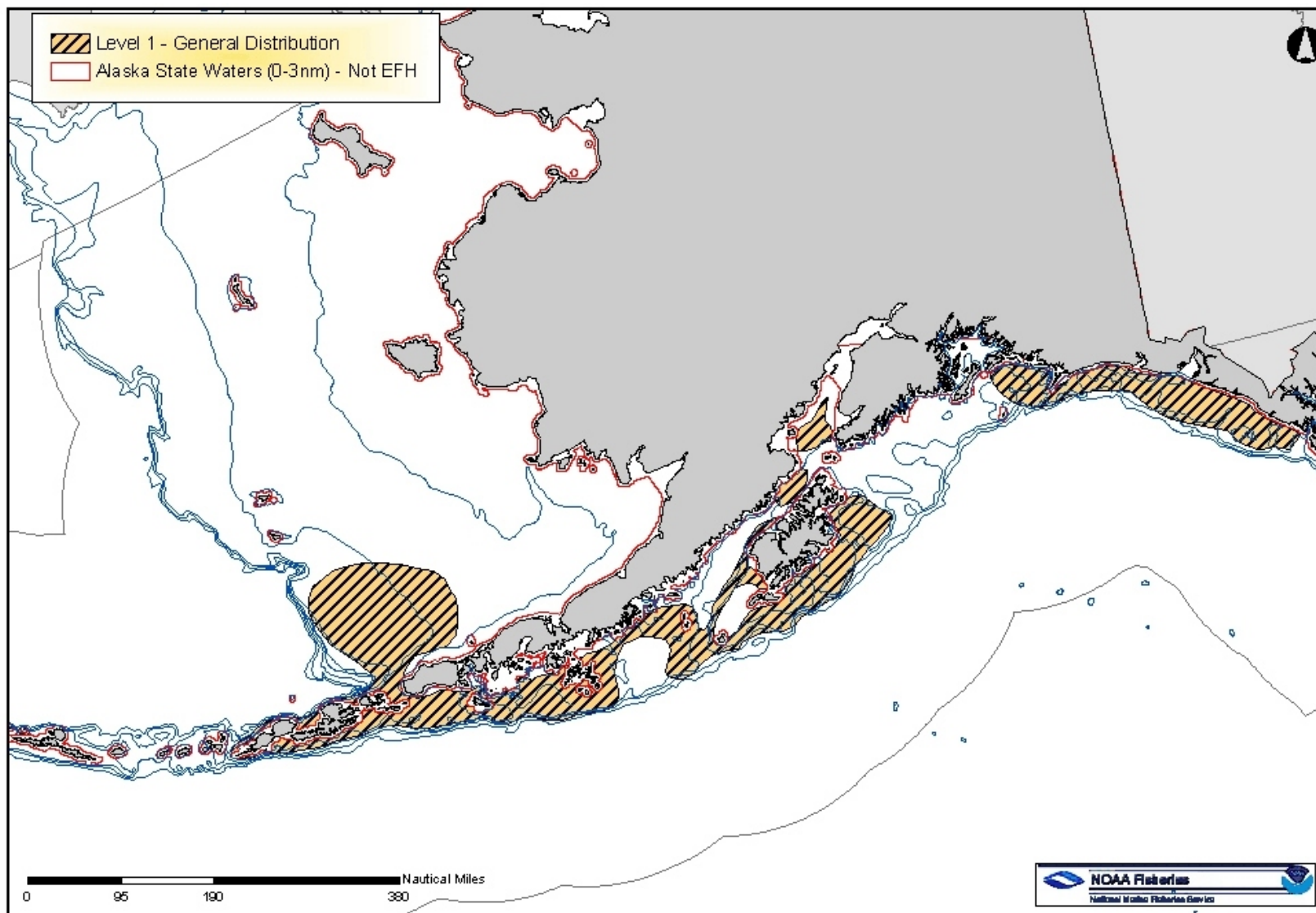


Figure 2-42. Alternative 6: Essential Fish Habitat for Marine Juvenile and Maturing Adult Chinook Salmon

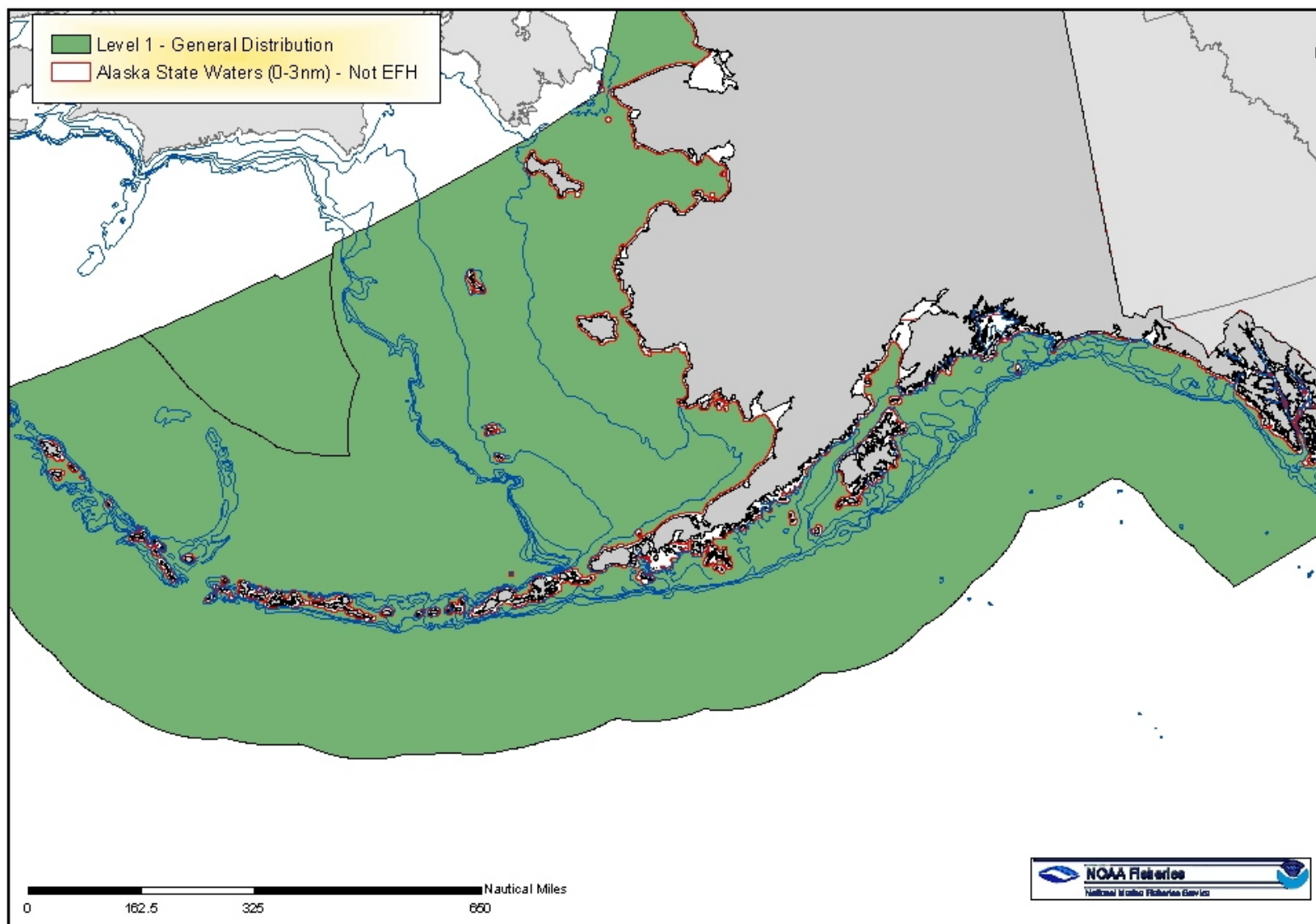


Figure 2-43. Alternative 2: Gulf Slope Bottom Trawl Closures

EFH Mitigation Alternative 2 Gulf of Alaska: Prohibit the use of bottom trawl gear targeting GOA slope rockfish within 11 designated sites of the GOA slope (200 to 1,000 m)

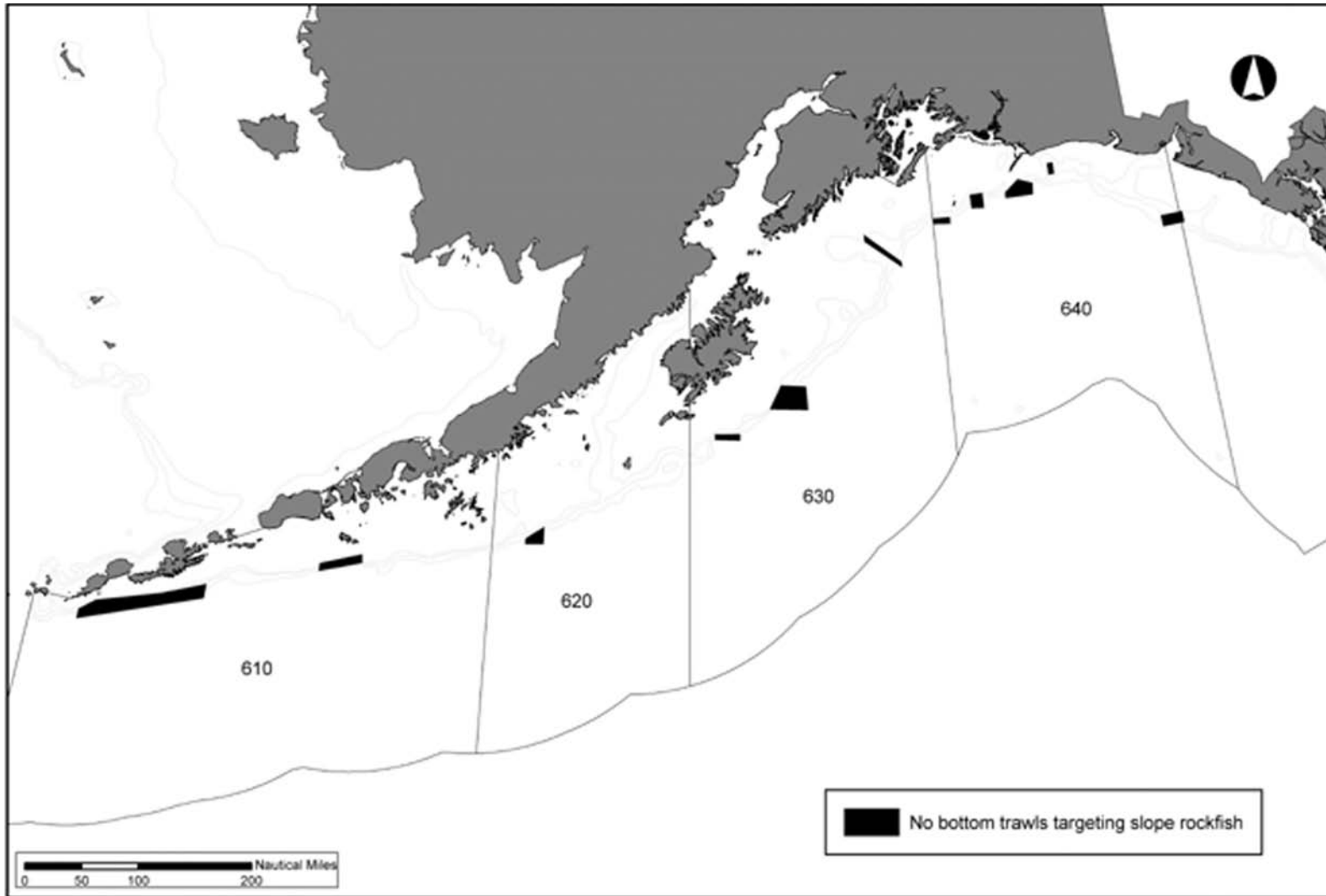


Figure 2-44. Alternative 3: Upper Slope Bottom Trawl Closures

EFH Mitigation Alternative 3 Gulf of Alaska: Prohibit the use of bottom trawl gear targeting GOA slope rockfish on the GOA slope (200 to 1,000 m)

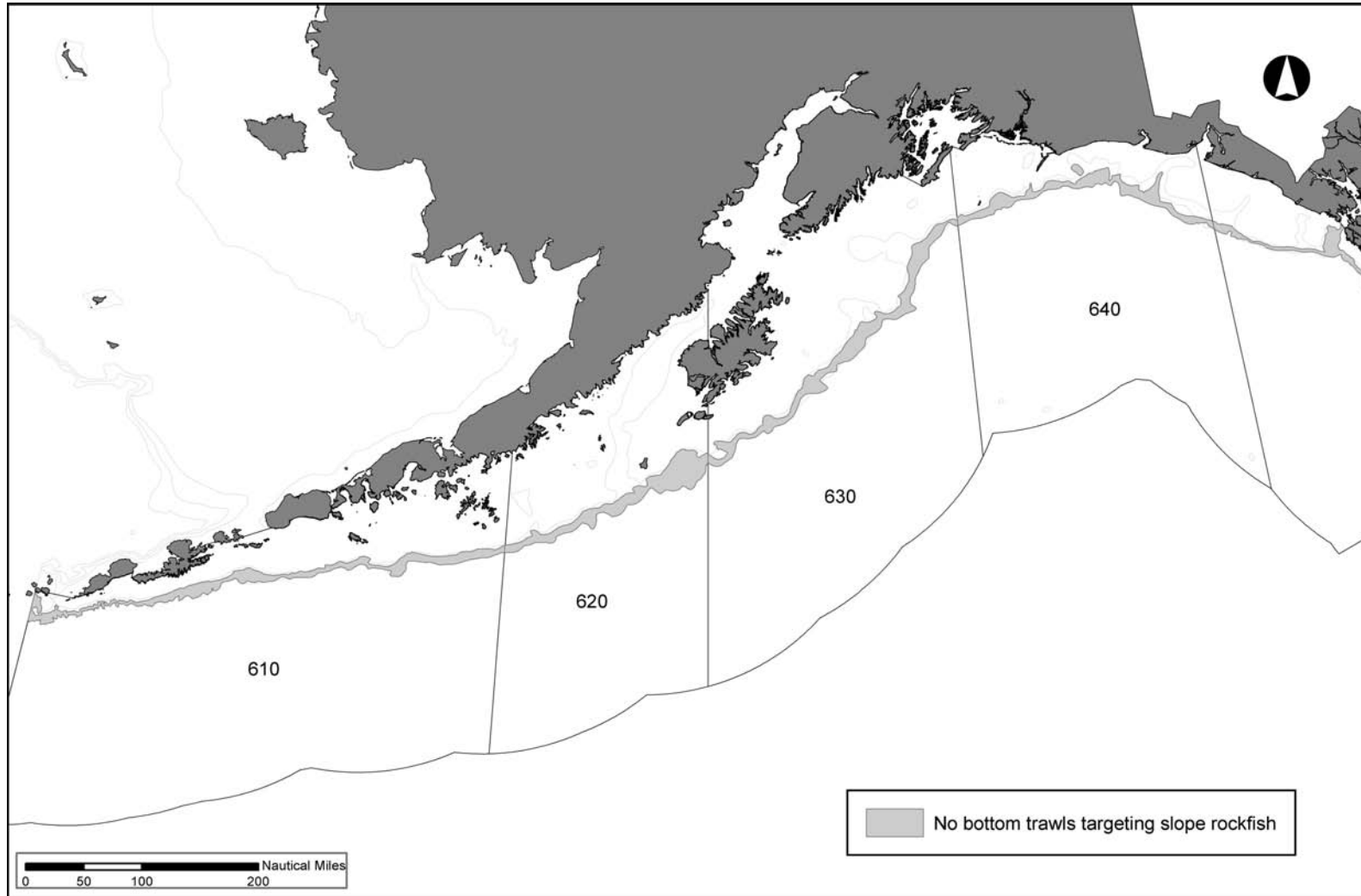


Figure 2-45. Alternative 4: Bering Sea Open/Closed Areas

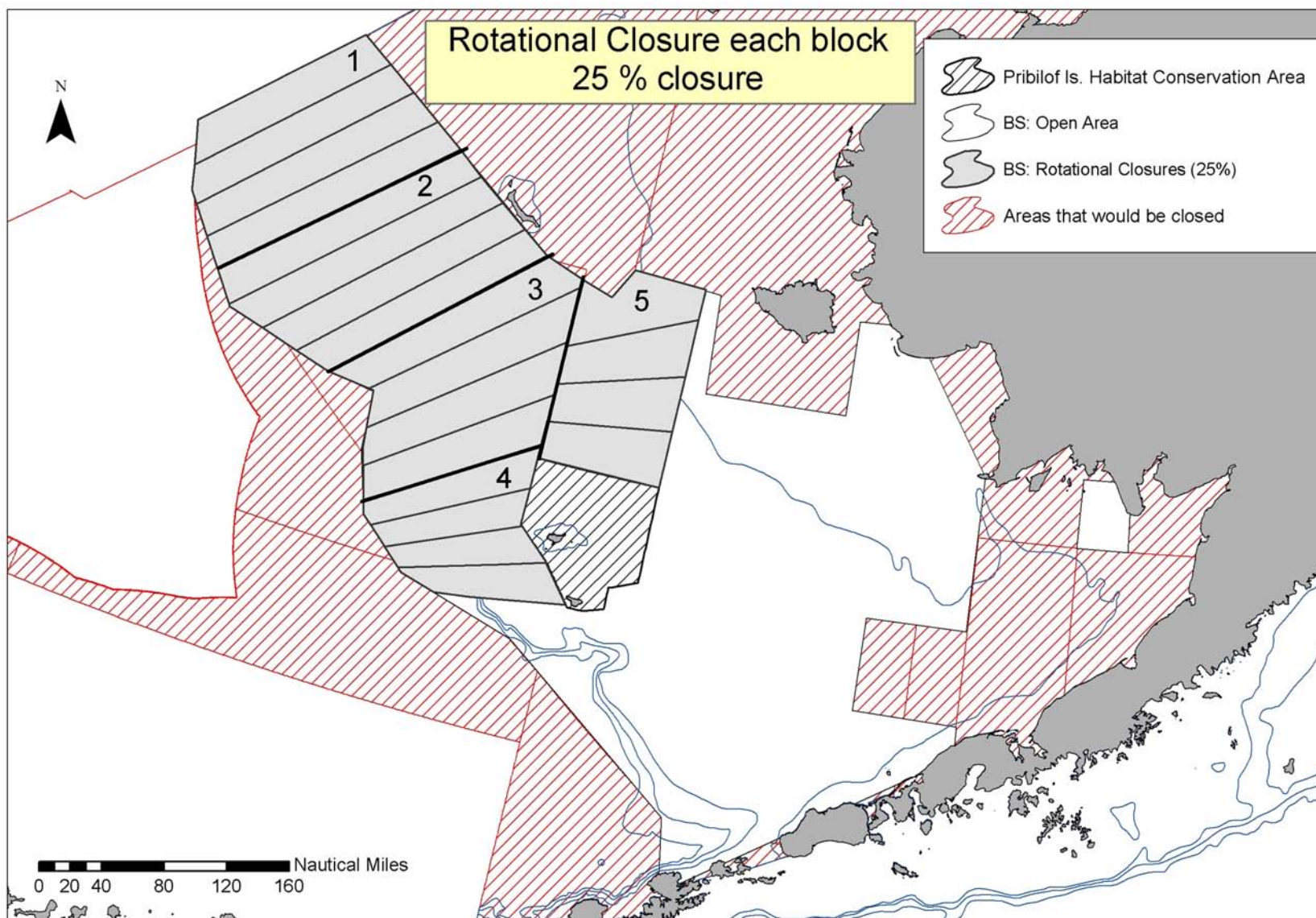


Figure 2-46. Diagram of Trawl Gear Modifications Included in Alternatives 4, 5A, and 5B

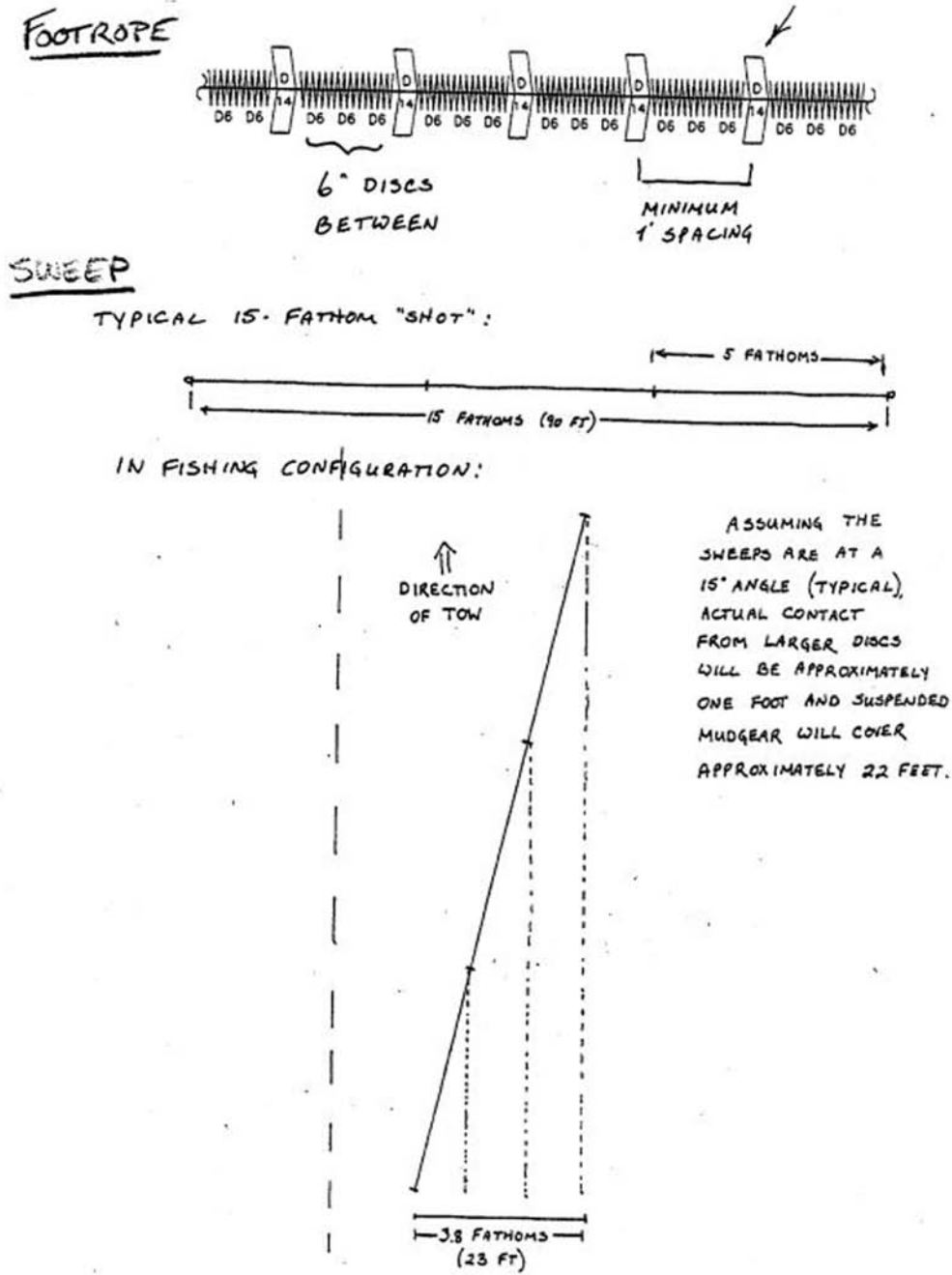


Figure 2-47. Alternative 4: Aleutian Islands Closure Areas

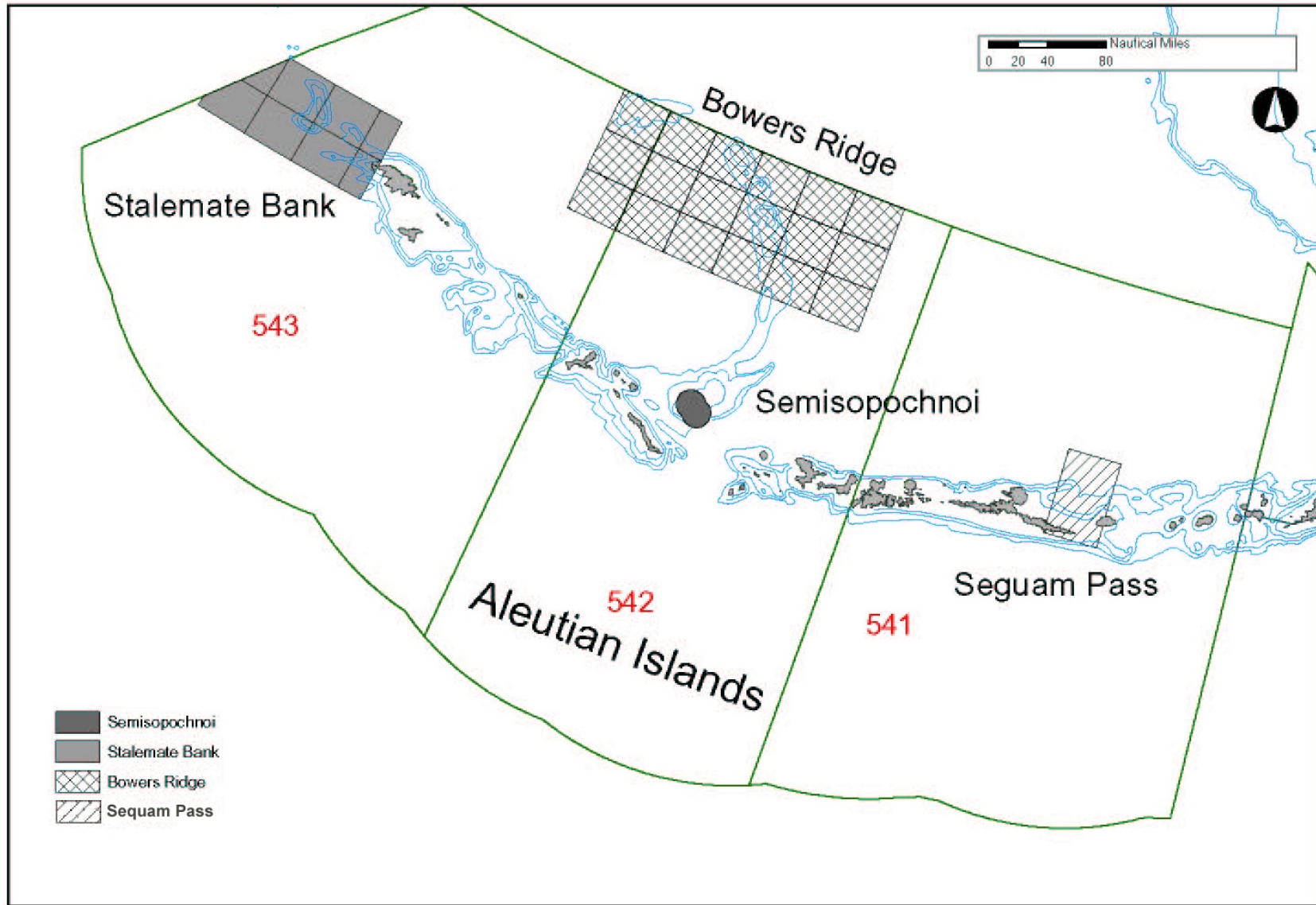


Figure 2-48. Alternative 4: Gulf of Alaska Closure Areas

EFH Mitigation Alternative 4 Gulf of Alaska: Prohibit the use of bottom trawl gear targeting GOA slope rockfish within 11 designated sites of the GOA slope (200 to 1,000 m)

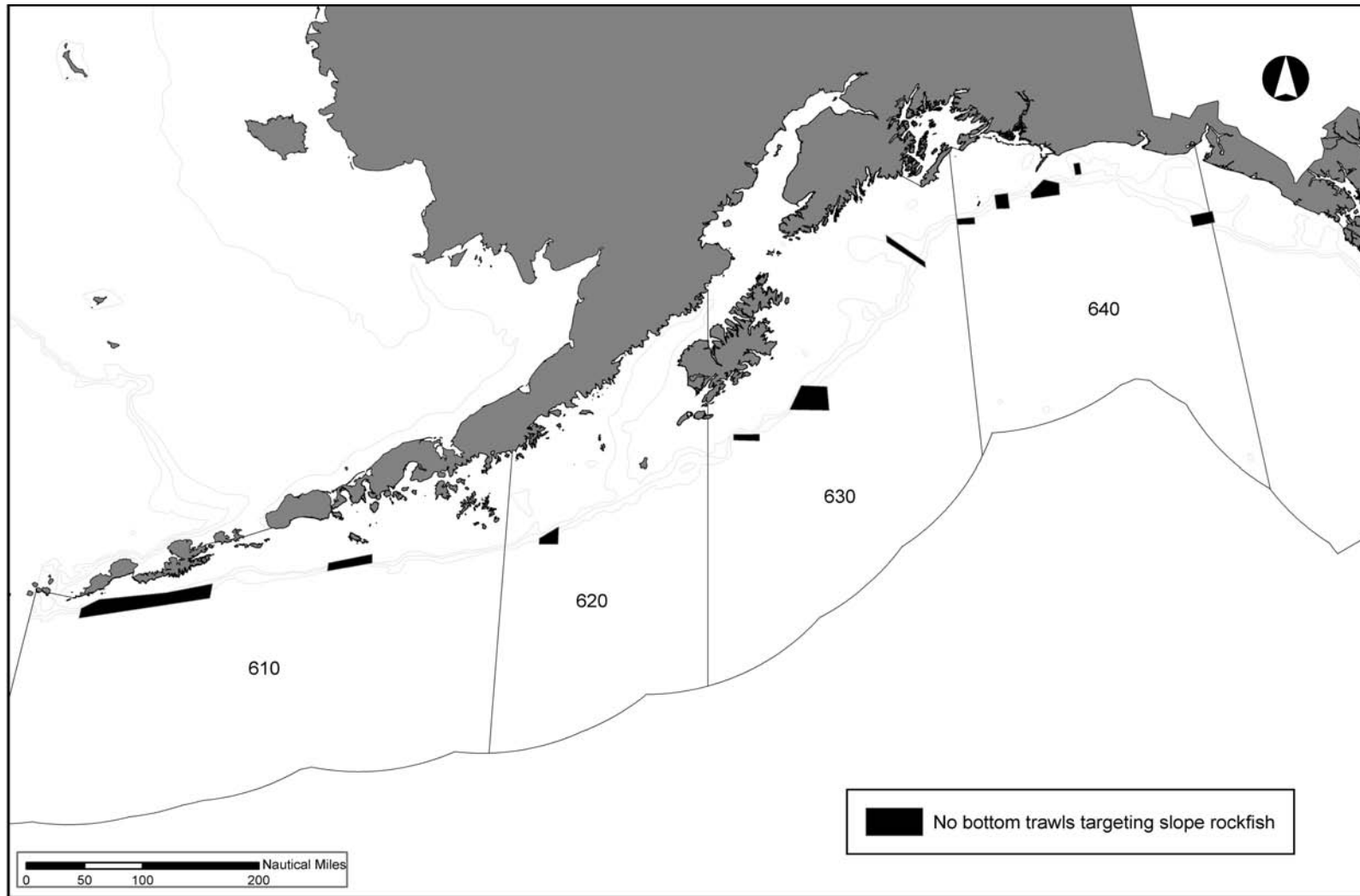


Figure 2-49. Alternatives 5A and 5B: Bering Sea Open/Closed Areas

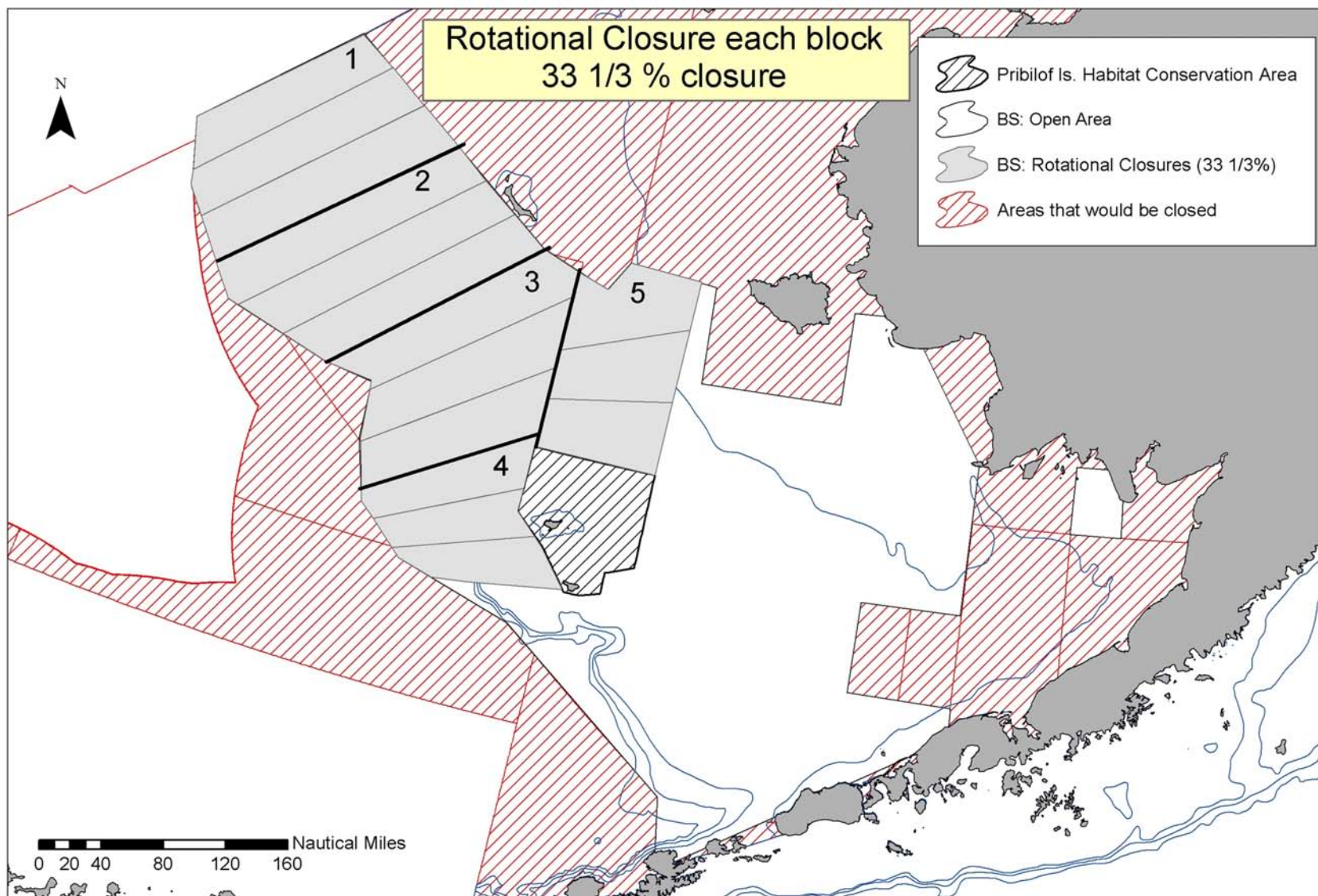


Figure 2-50. Alternative 5A: Aleutian Islands Closure Areas

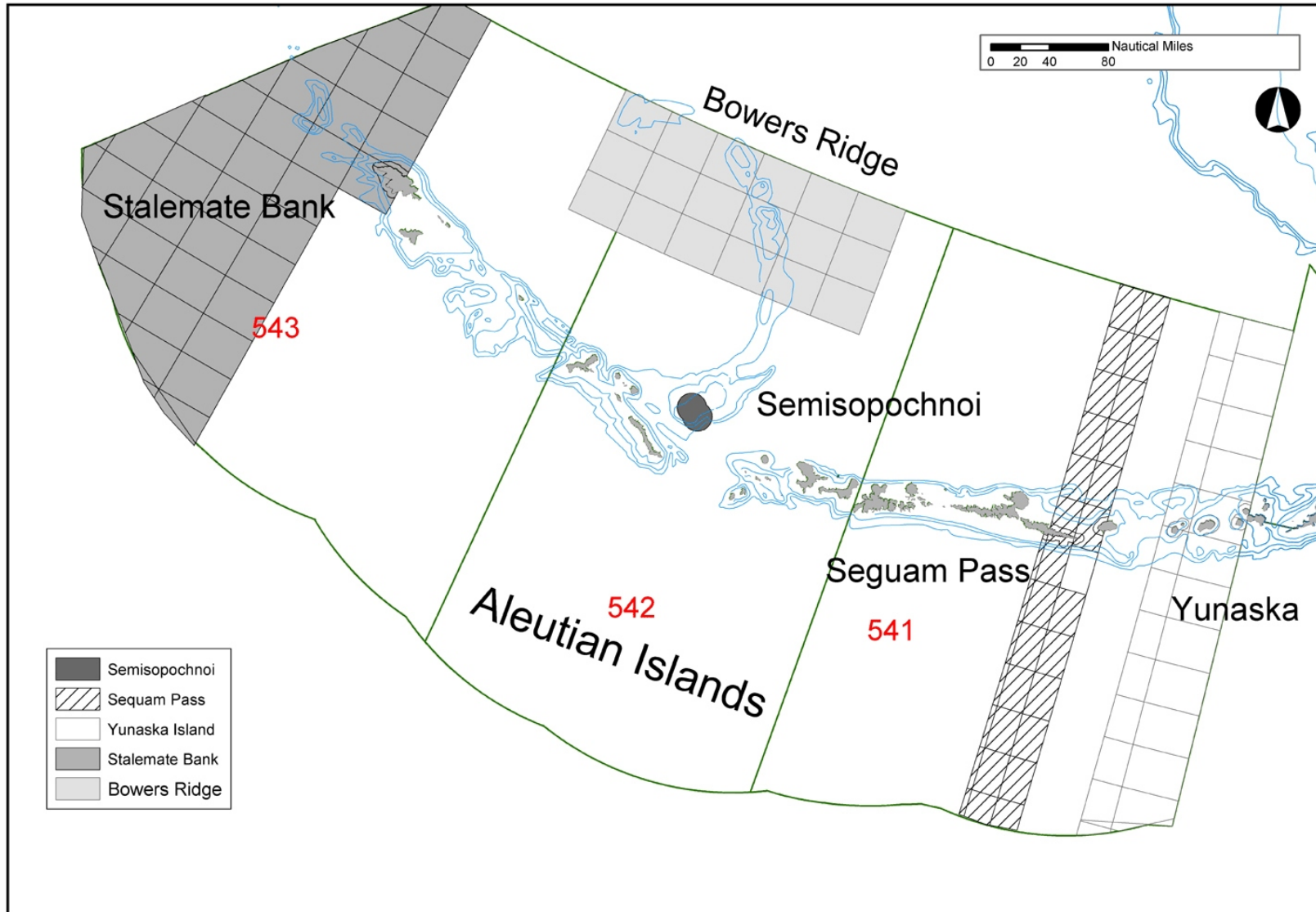


Figure 2-51. Alternatives 5A and 5B: Gulf of Alaska Closure Areas

EFH Mitigation Alternative 5 Gulf of Alaska: Prohibit the use of bottom trawl gear for all groundfish fisheries on 10 designated sites of the GOA slope (200 to 1,000 m). Additionally, prohibit the use of bottom trawls for targeting GOA slope rockfish on the GOA slope (200 to 1,000 m)

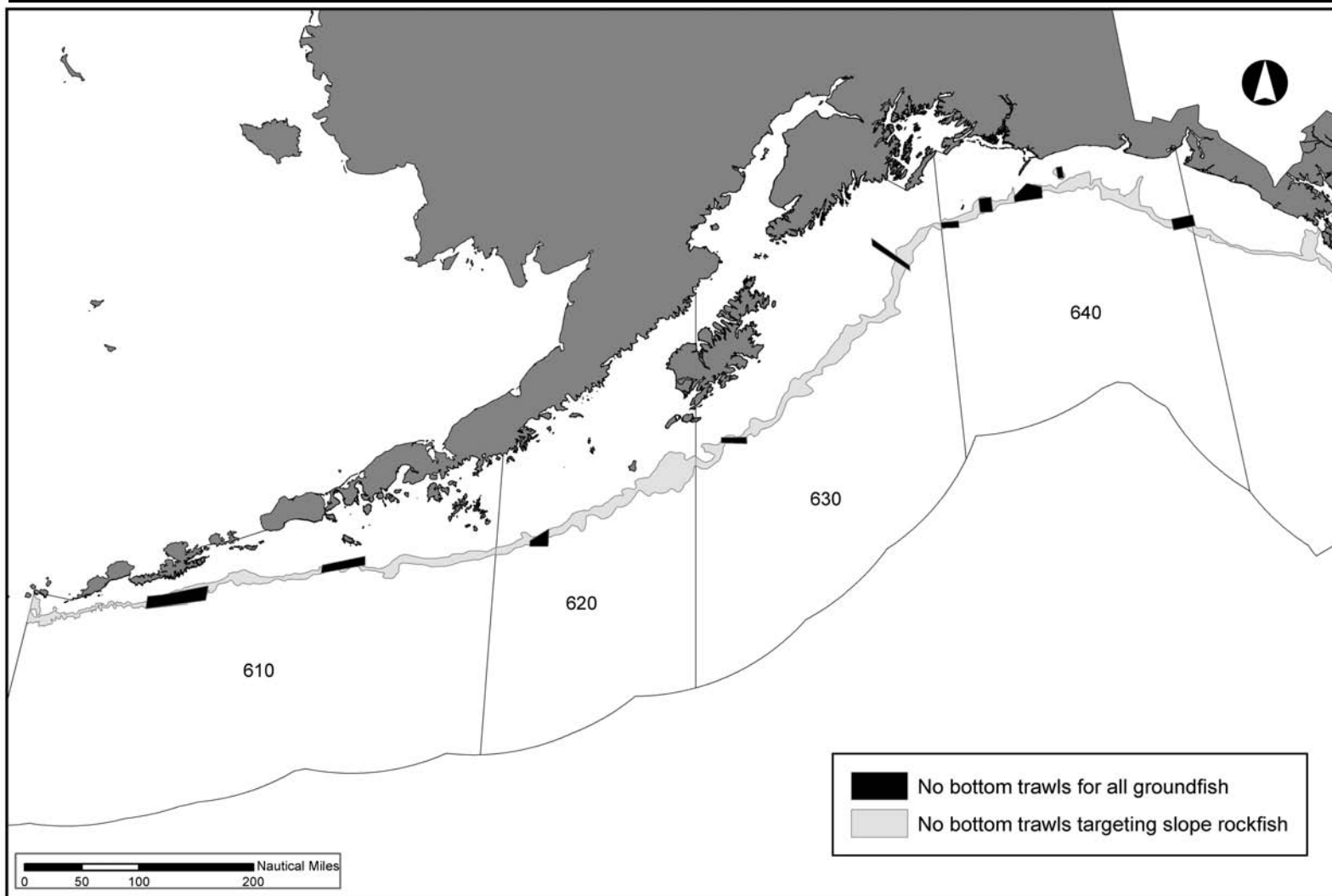


Figure 2-52. Alternative 5B, Option 1: Aleutian Islands Open/Closed Areas

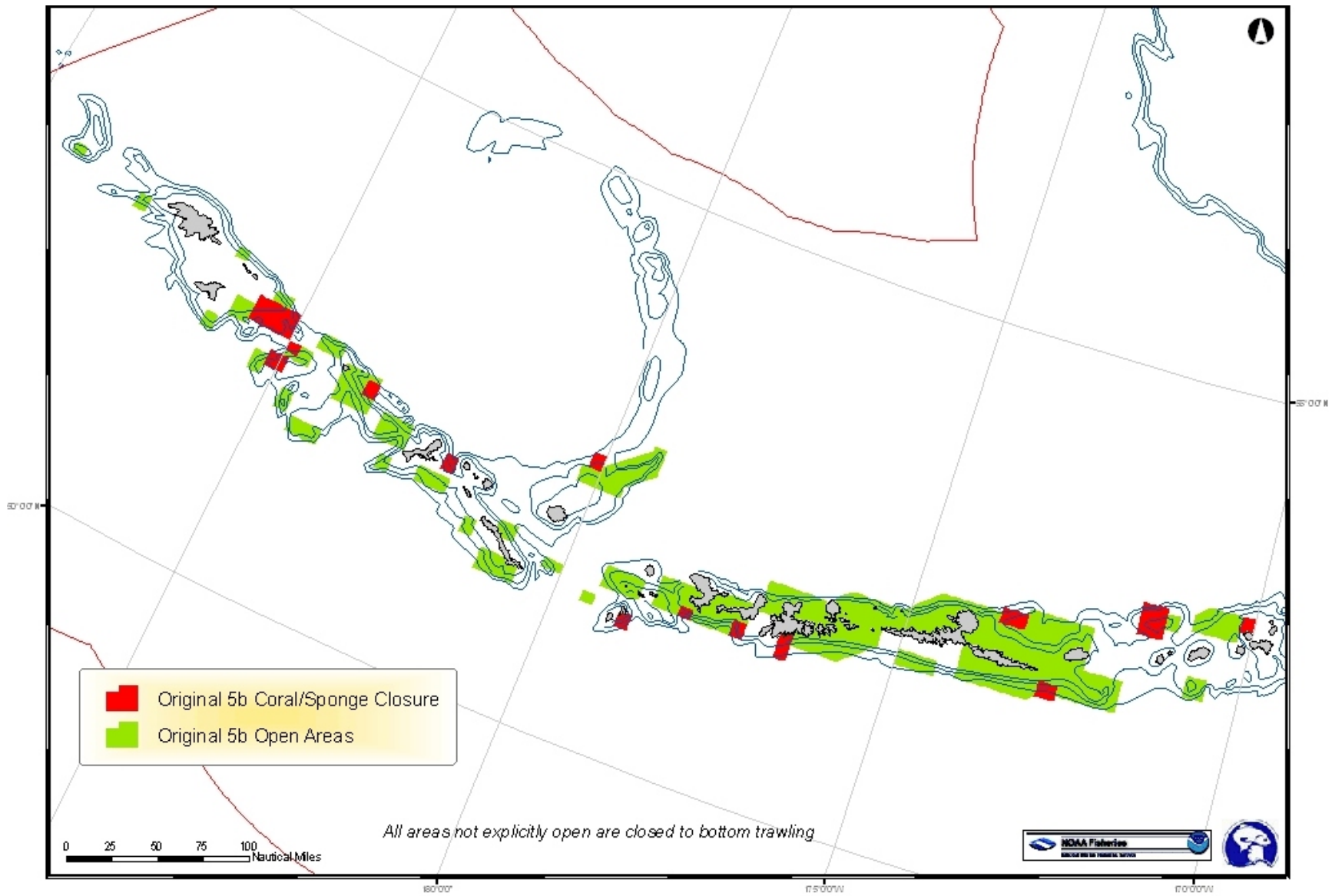


Figure 2-53. Alternative 5B, Option 2: Aleutian Islands Open/Closed Areas

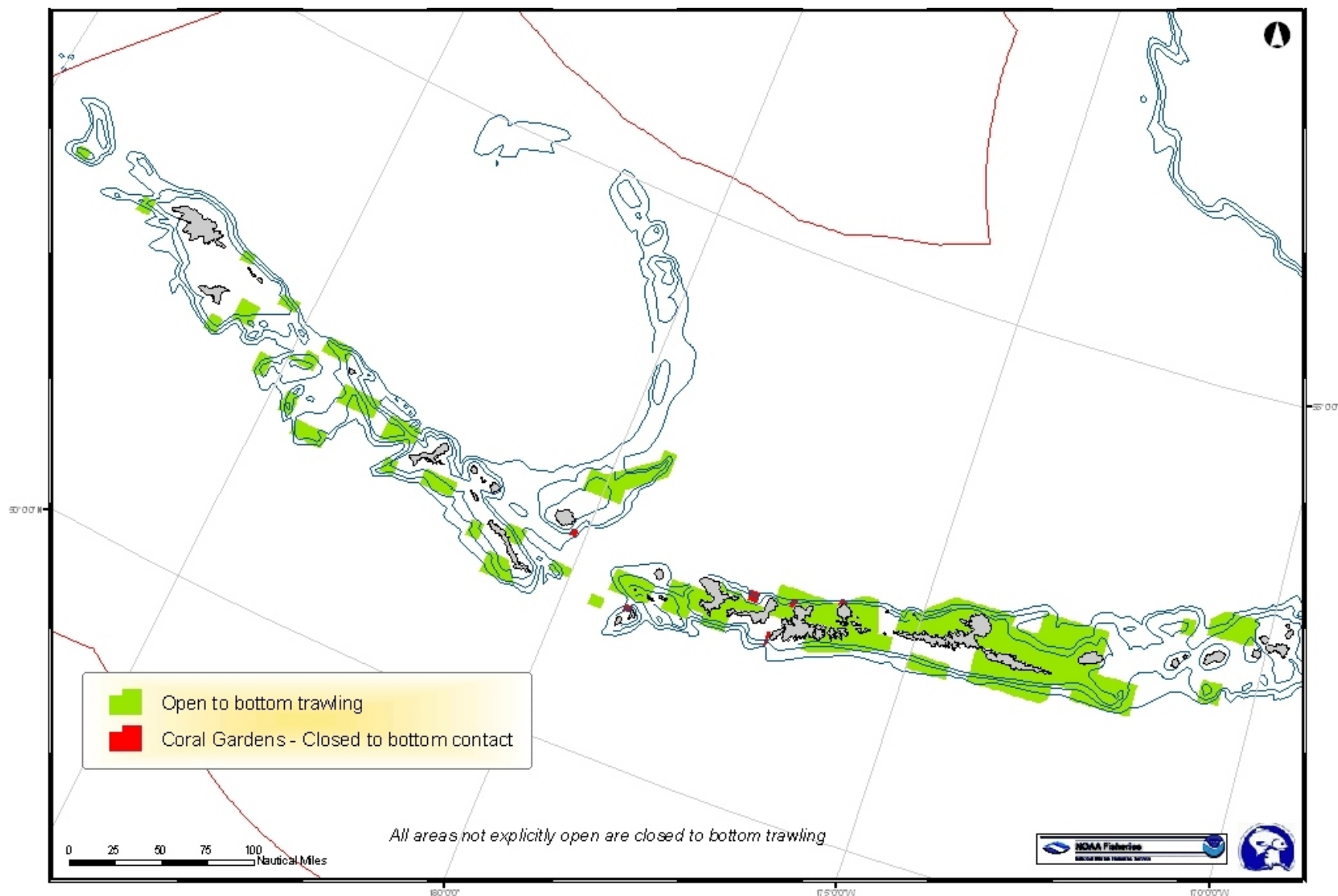


Figure 2-54. Alternative 5B, Option 3: Aleutian Islands Open Areas

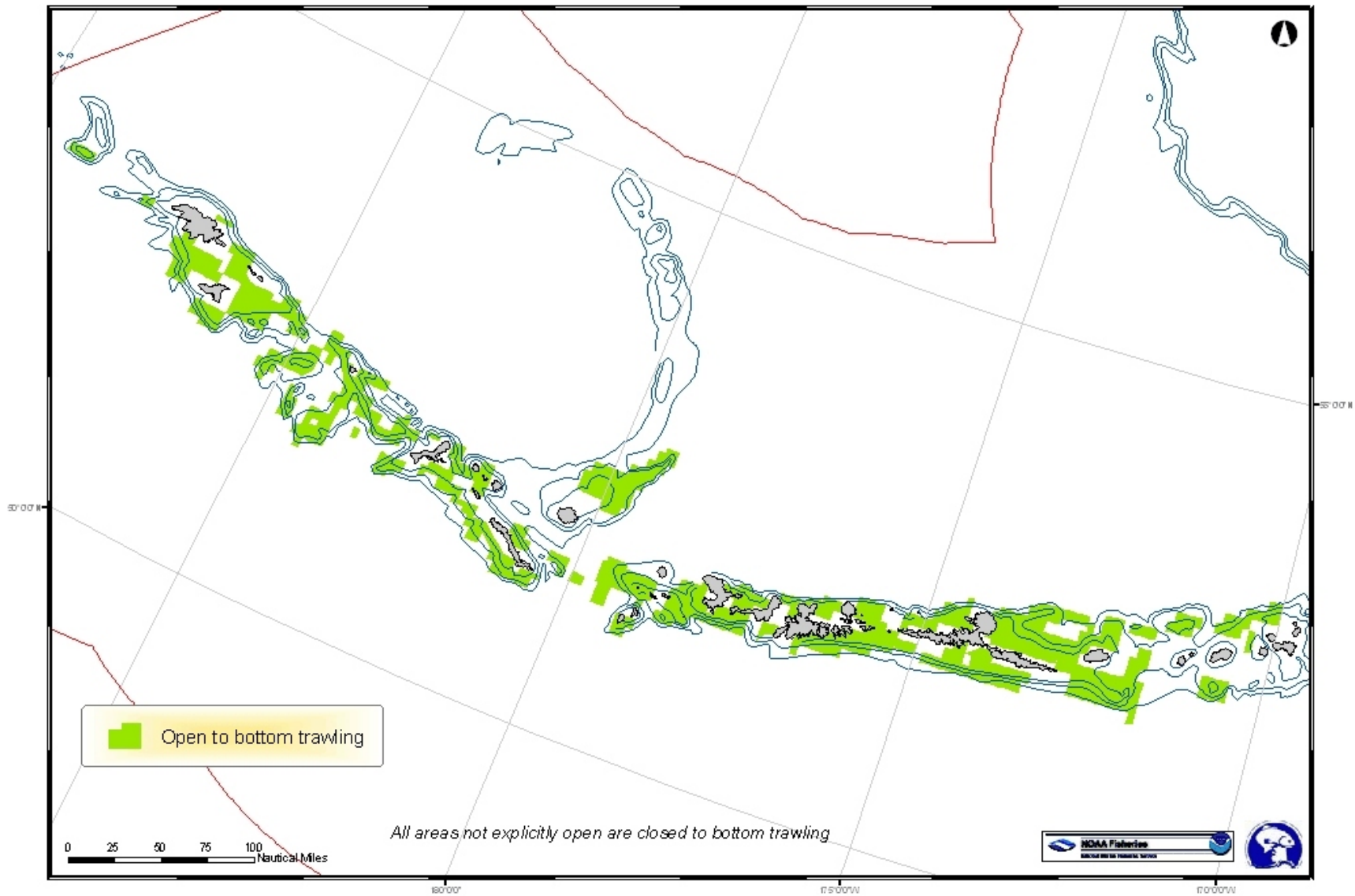


Figure 2-55. Alternative 5C: Aleutian Islands Open/Closed Areas

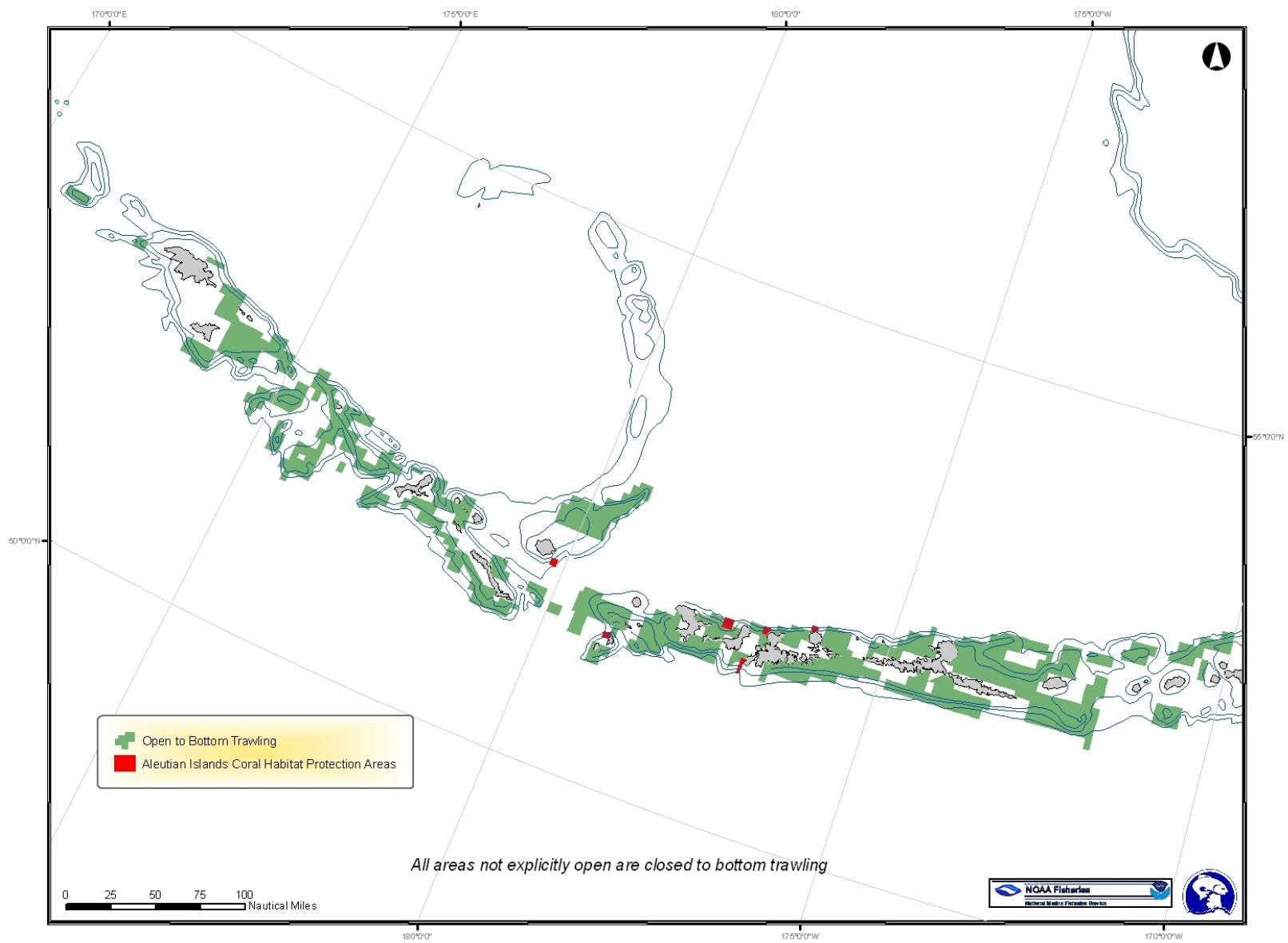


Figure 2-56. Alternative 5C: Gulf of Alaska Closure Areas

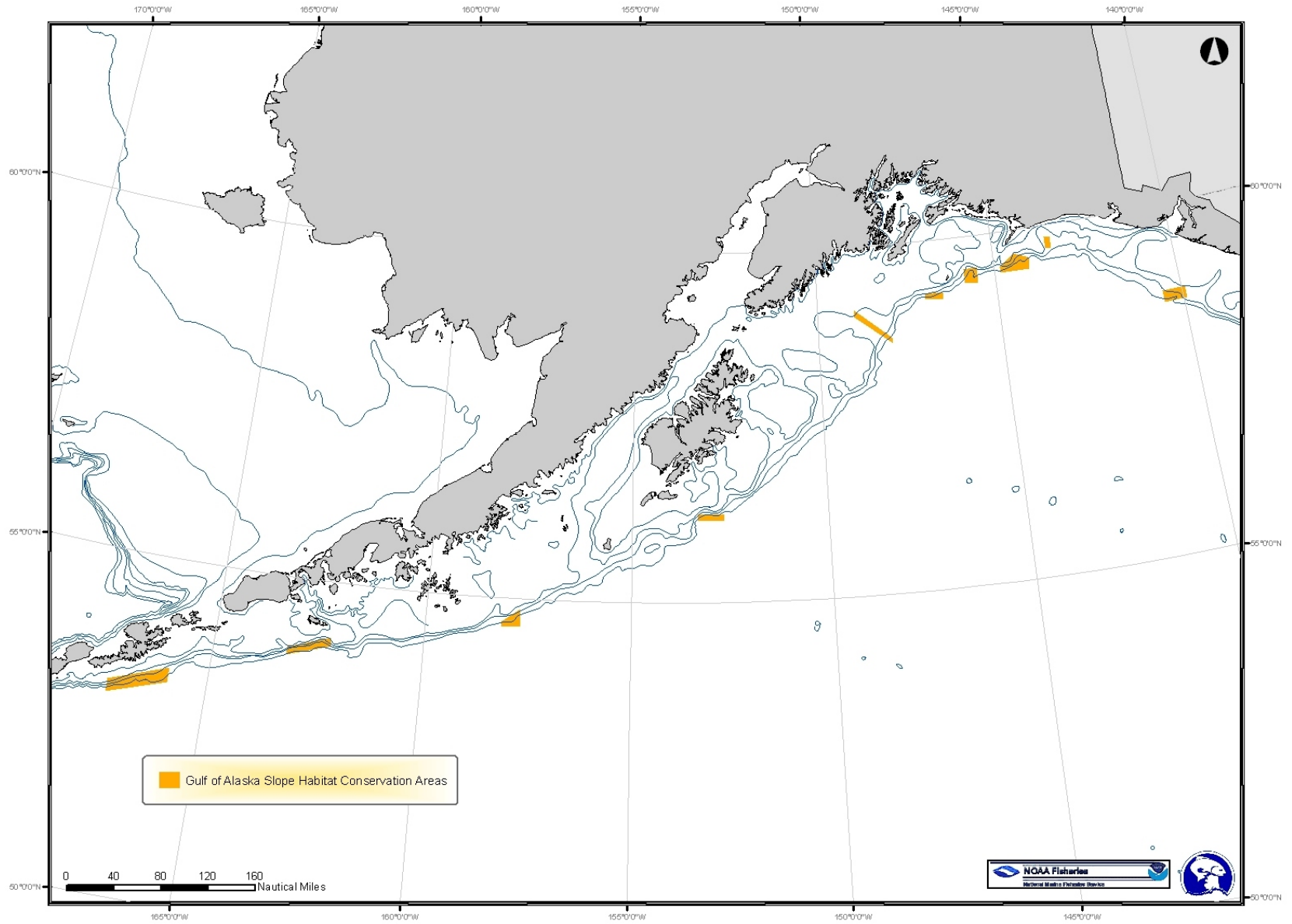


Figure 2-57. Alternative 6: Closure Areas (Gulf of Alaska)

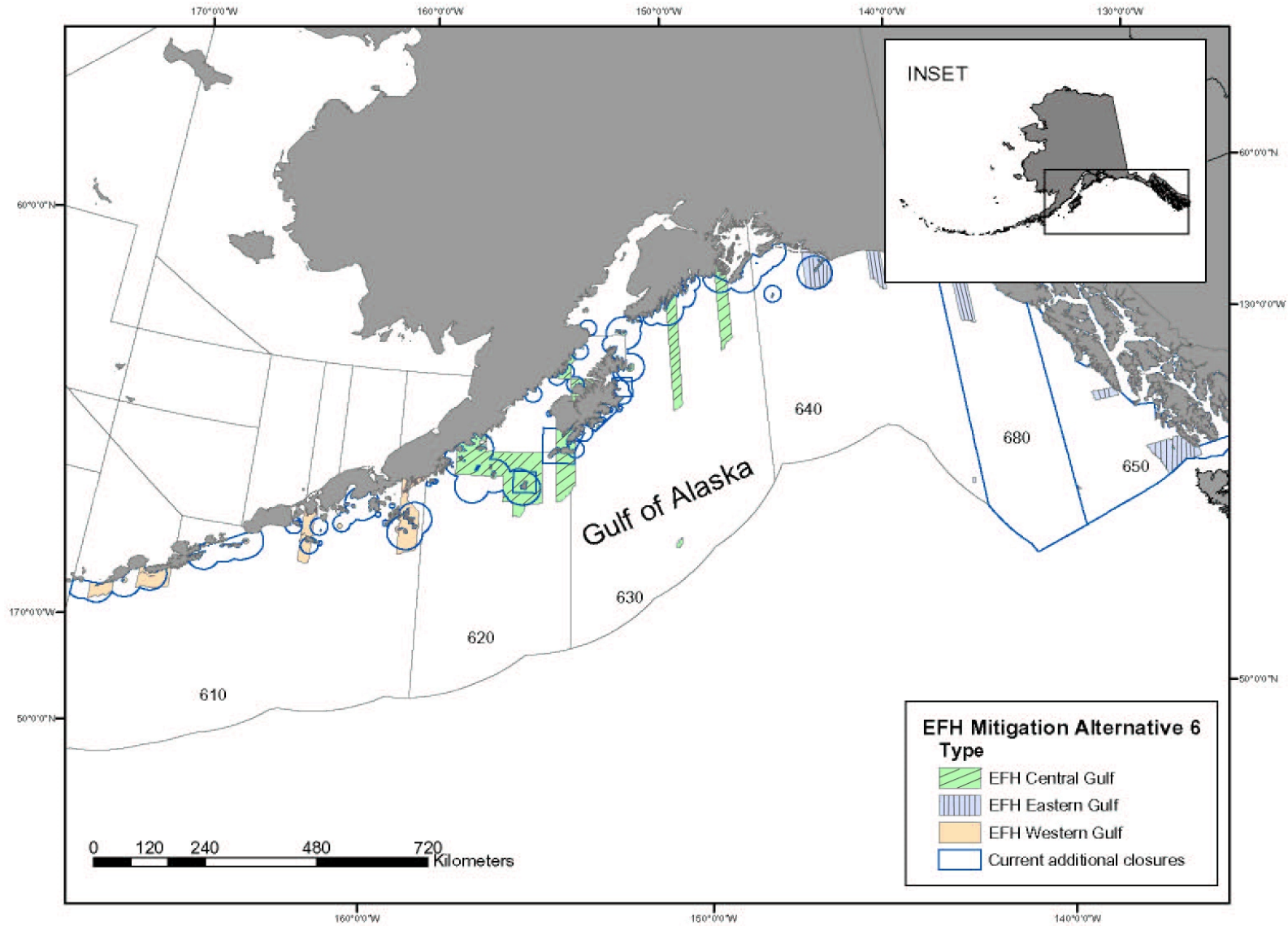


Figure 2-58. Alternative 6: Closure Areas (Aleutian Islands)

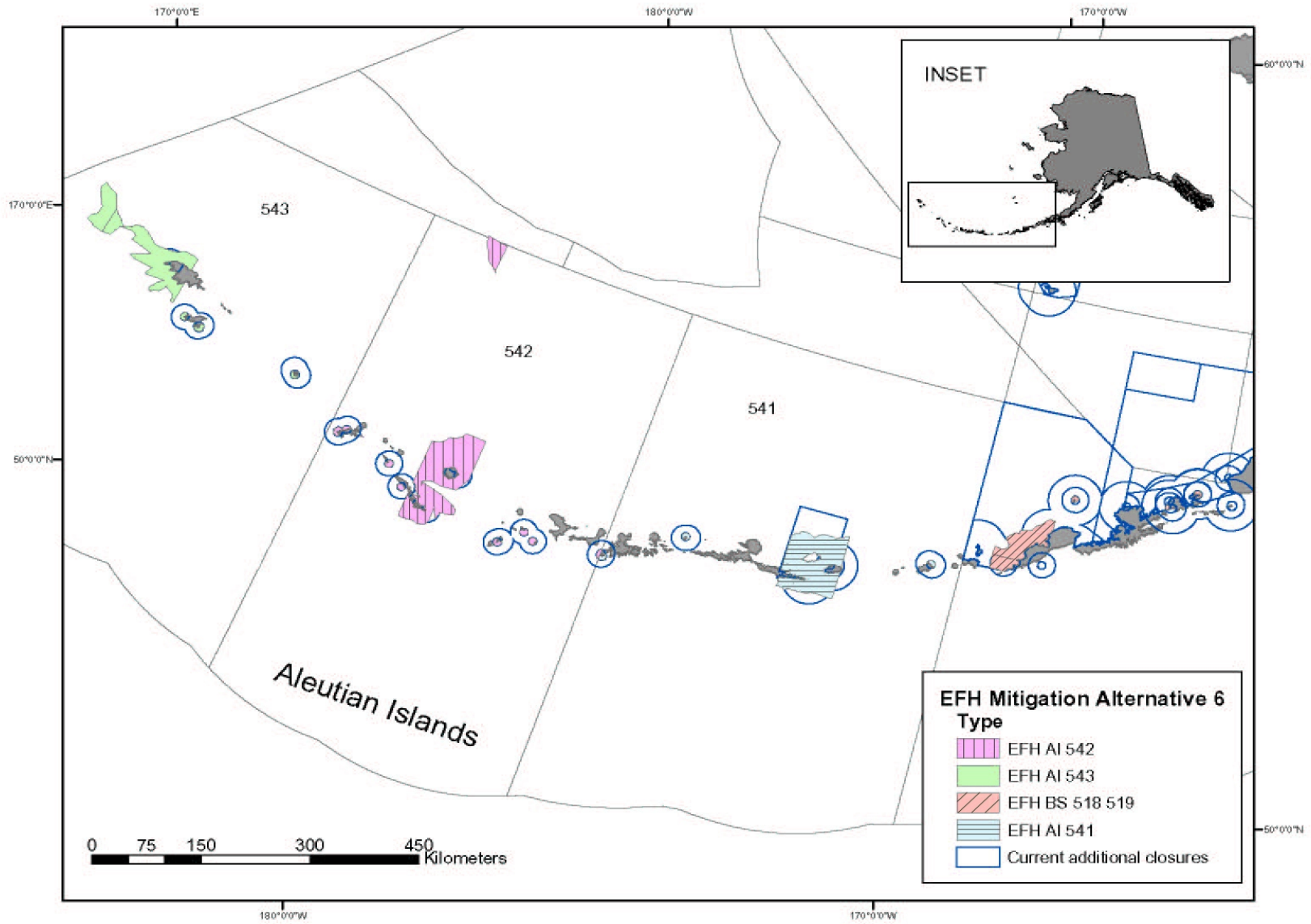


Figure 2-59. Alternative 6: Closure Areas (Bering Sea)

