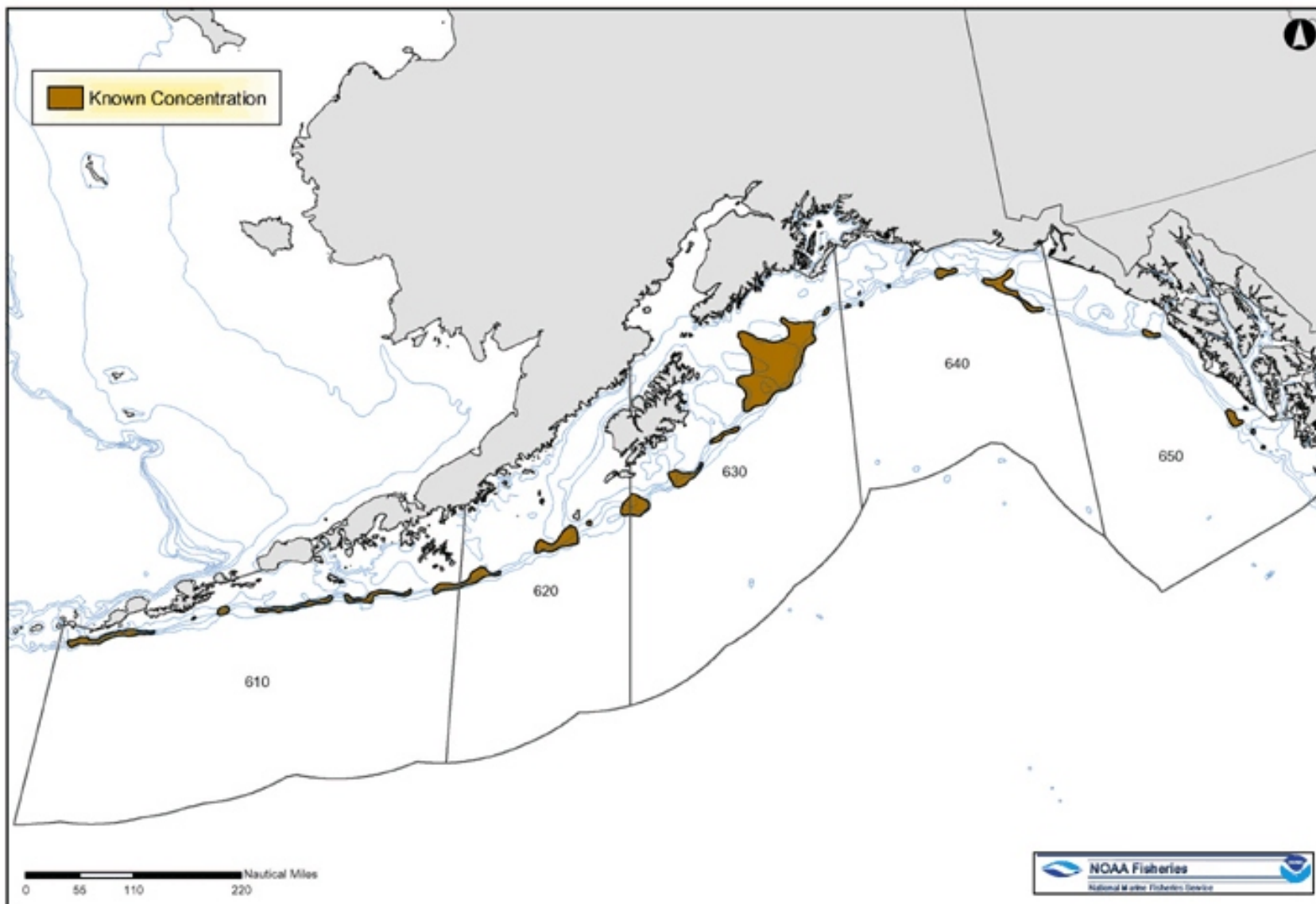
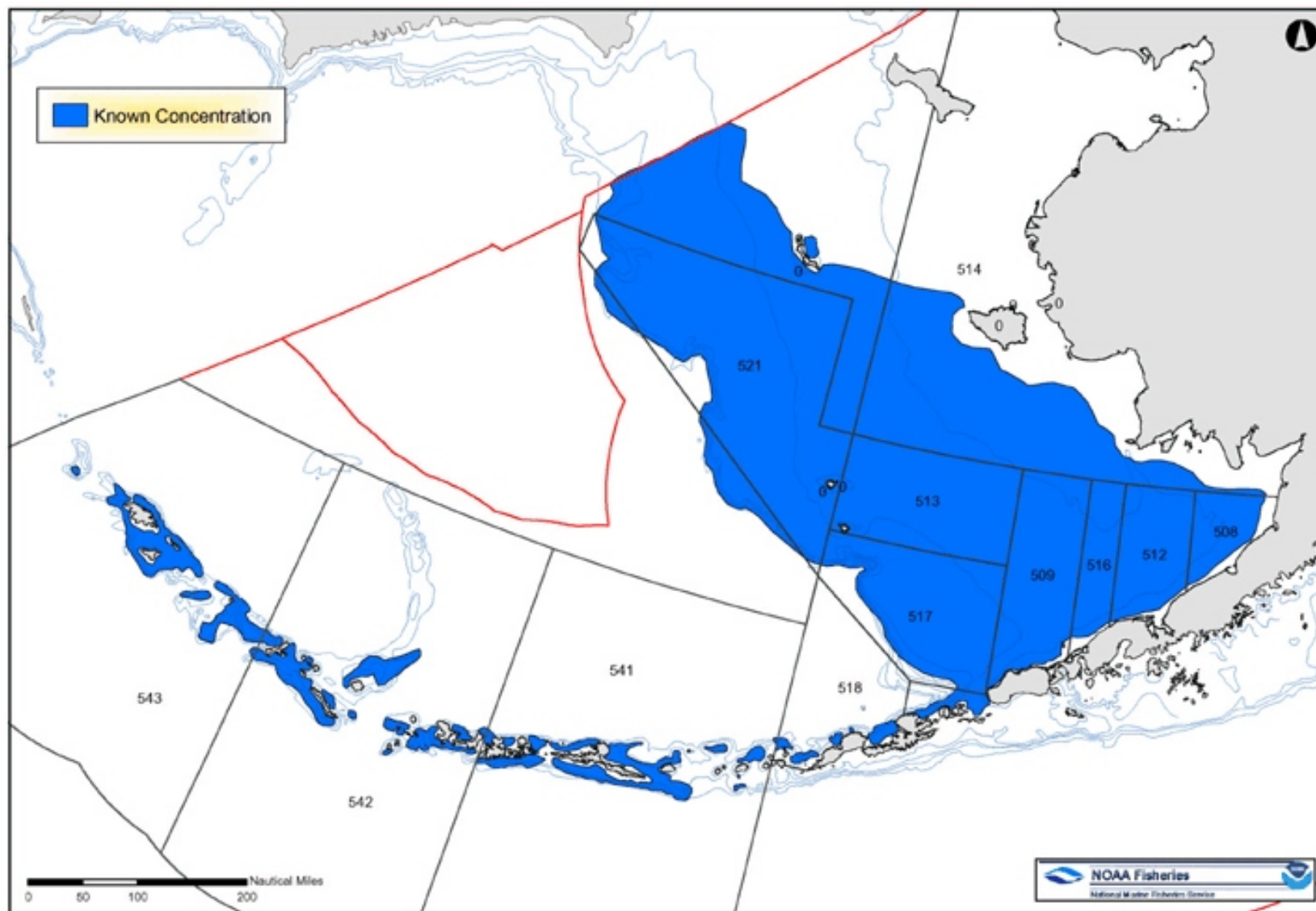


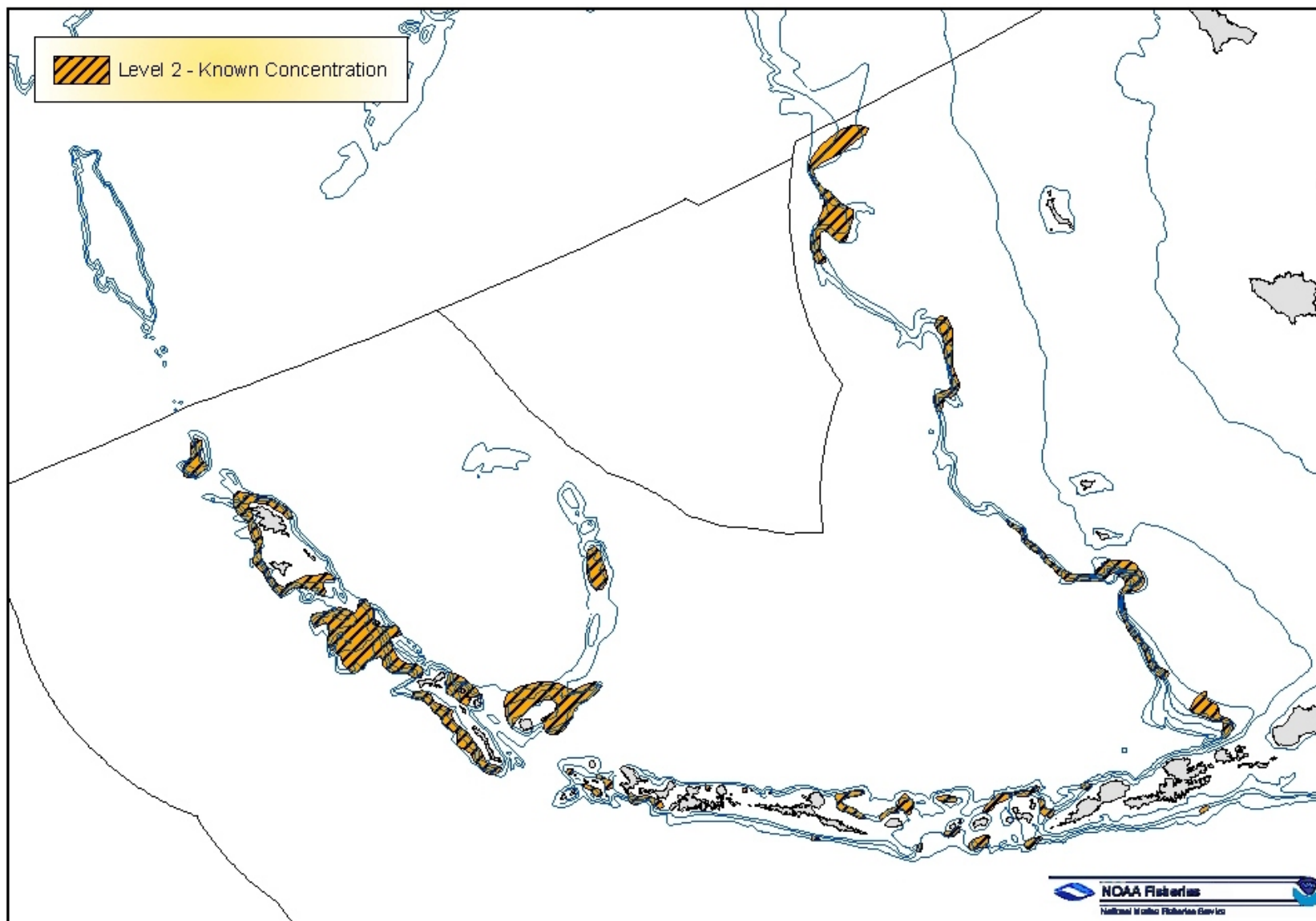
**Figure 2-17.** Alternative 4: Essential Fish Habitat for GOA Pacific Ocean Perch



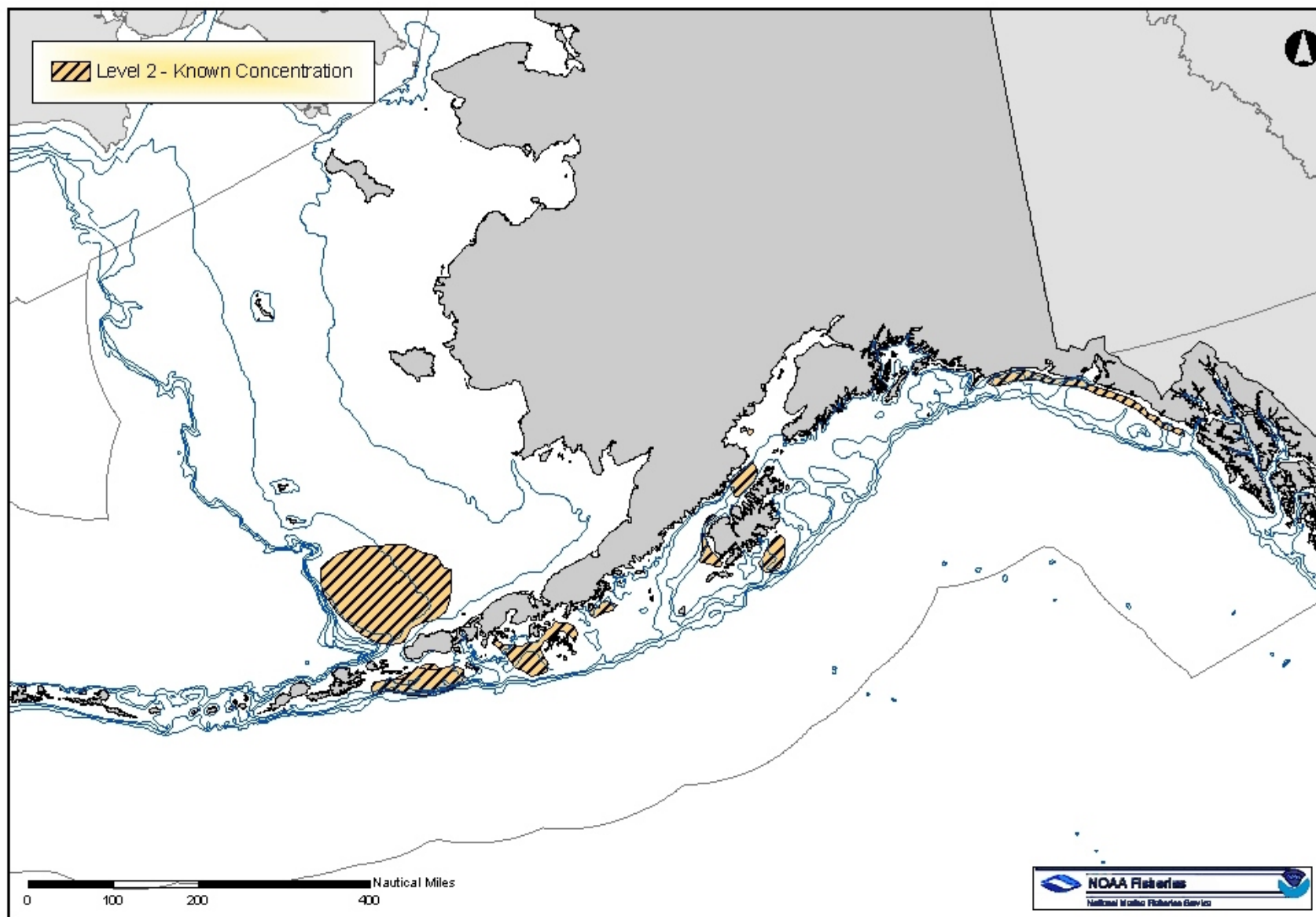
**Figure 2-18.** Alternative 4: Essential Fish Habitat for Late Juvenile and Adult Pacific Cod



**Figure 2-19.** Alternative 4: Essential Fish Habitat for BSAI Golden King Crab

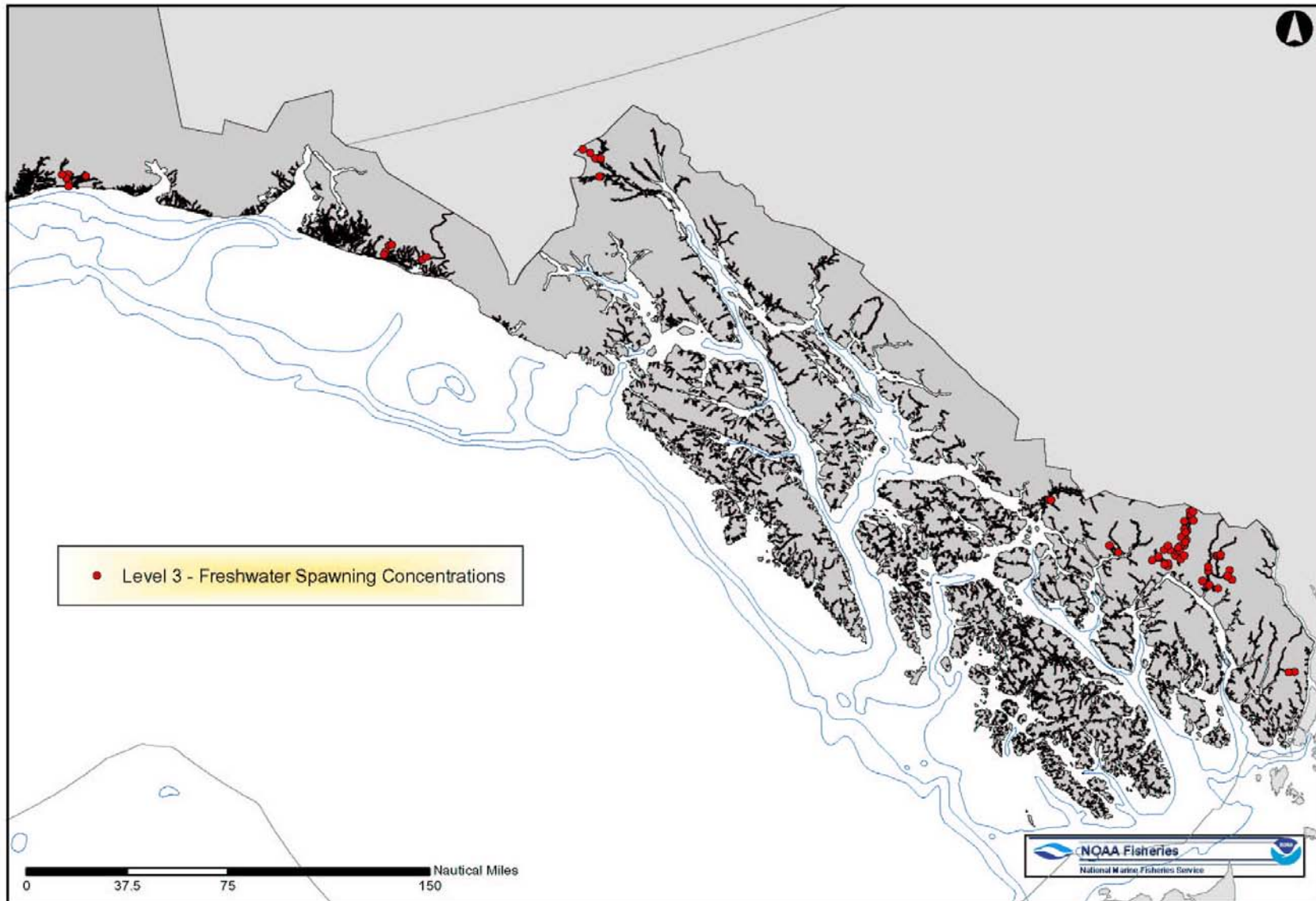


**Figure 2-20.** Alternative 4: Essential Fish Habitat for Weathervane Scallops

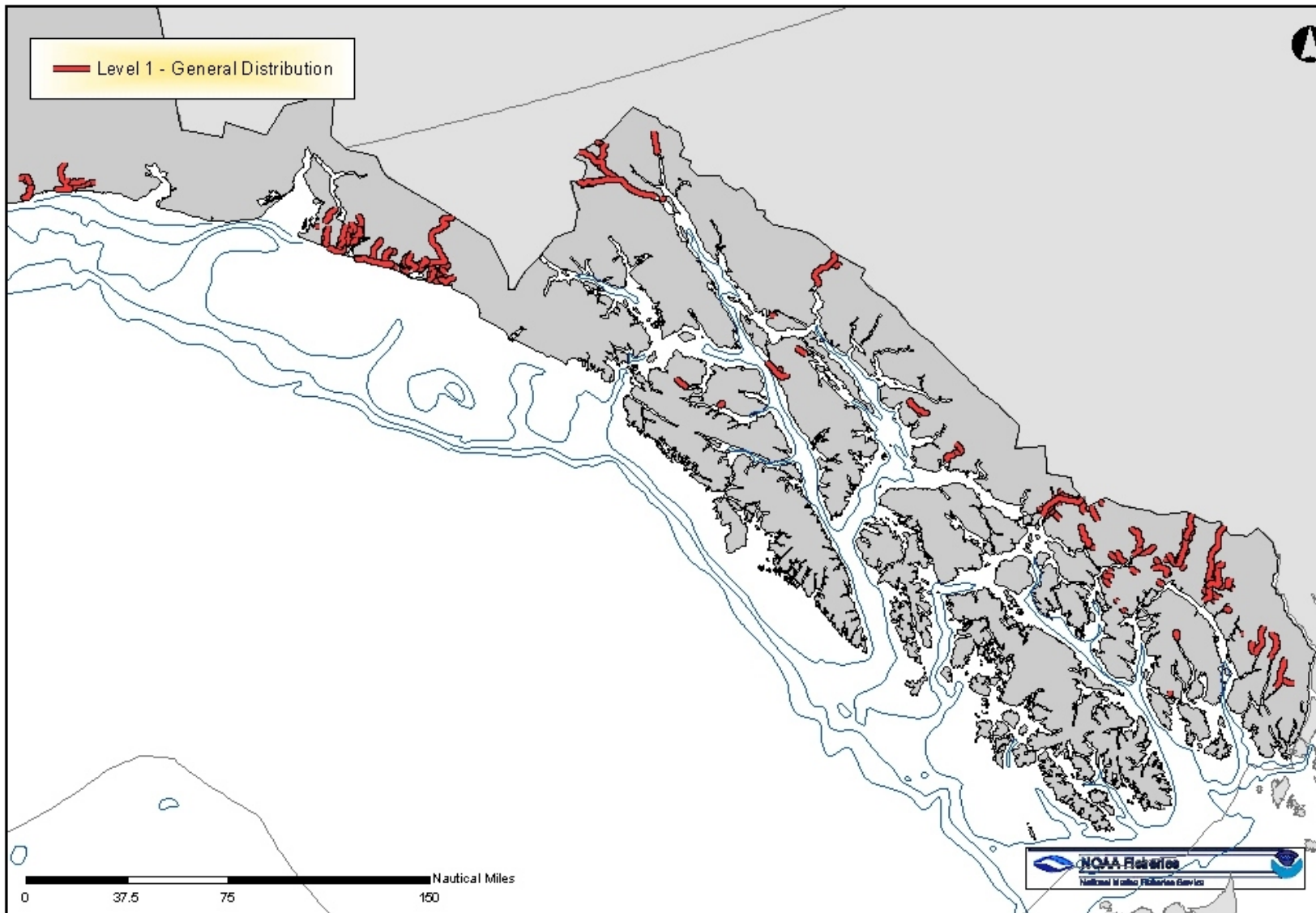




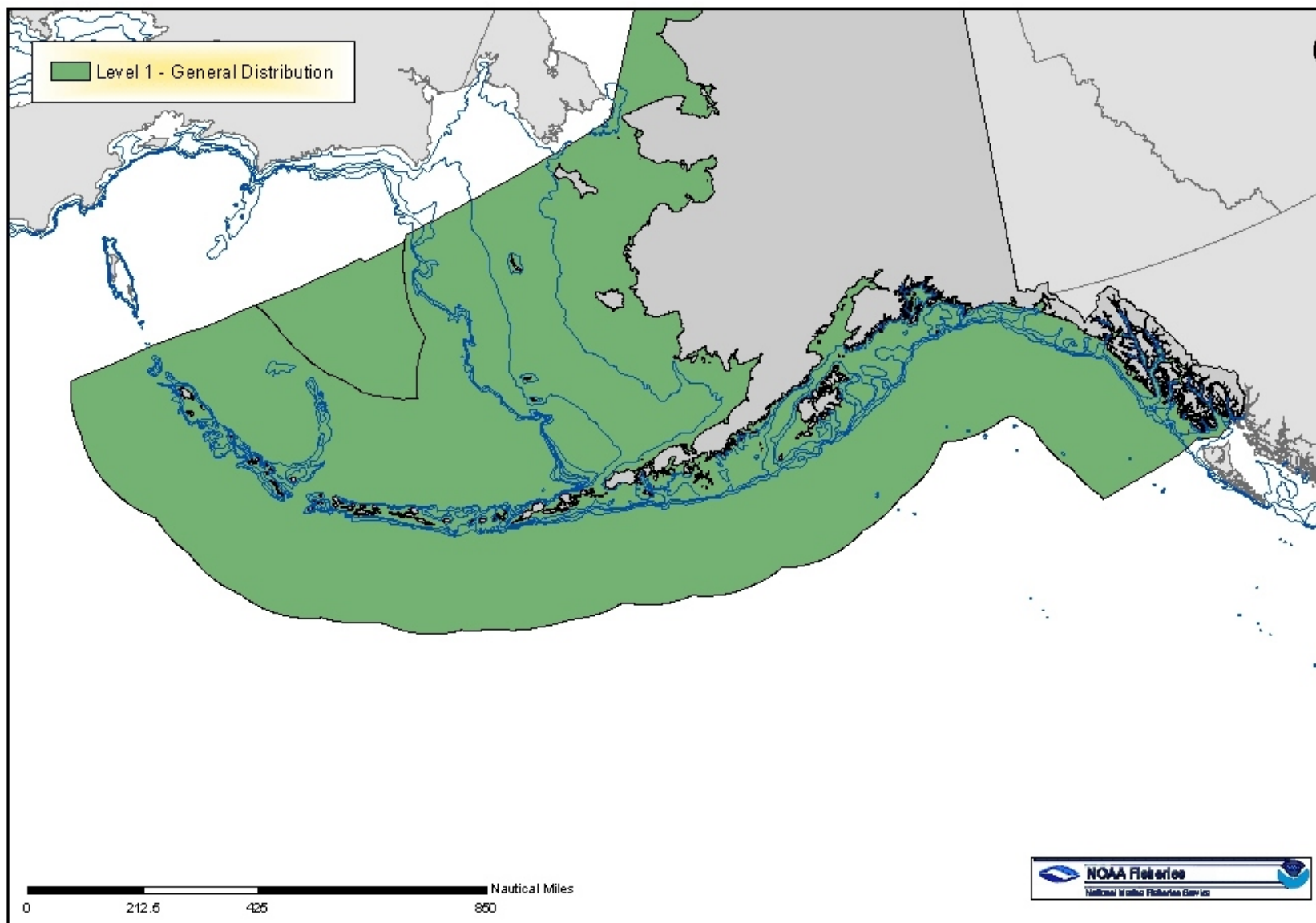
**Figure 2-21.** Alternative 4: Essential Fish Habitat for Freshwater Chinook Salmon Eggs and Adults



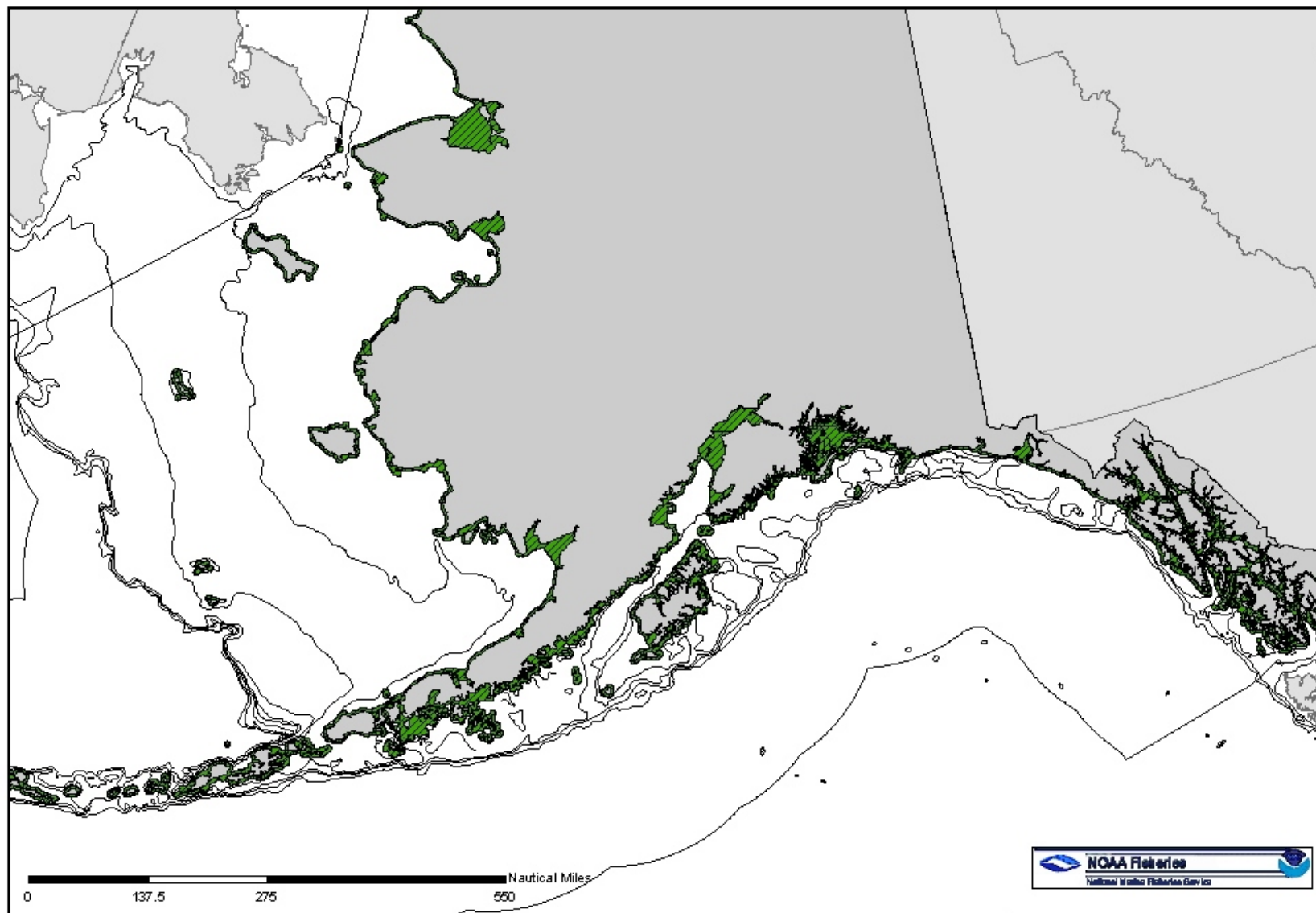
**Figure 2-22.** Alternative 4: Essential Fish Habitat for Freshwater Chinook Salmon Larvae and Juveniles



**Figure 2-23.** Alternative 4: Essential Fish Habitat for Marine Chinook Salmon

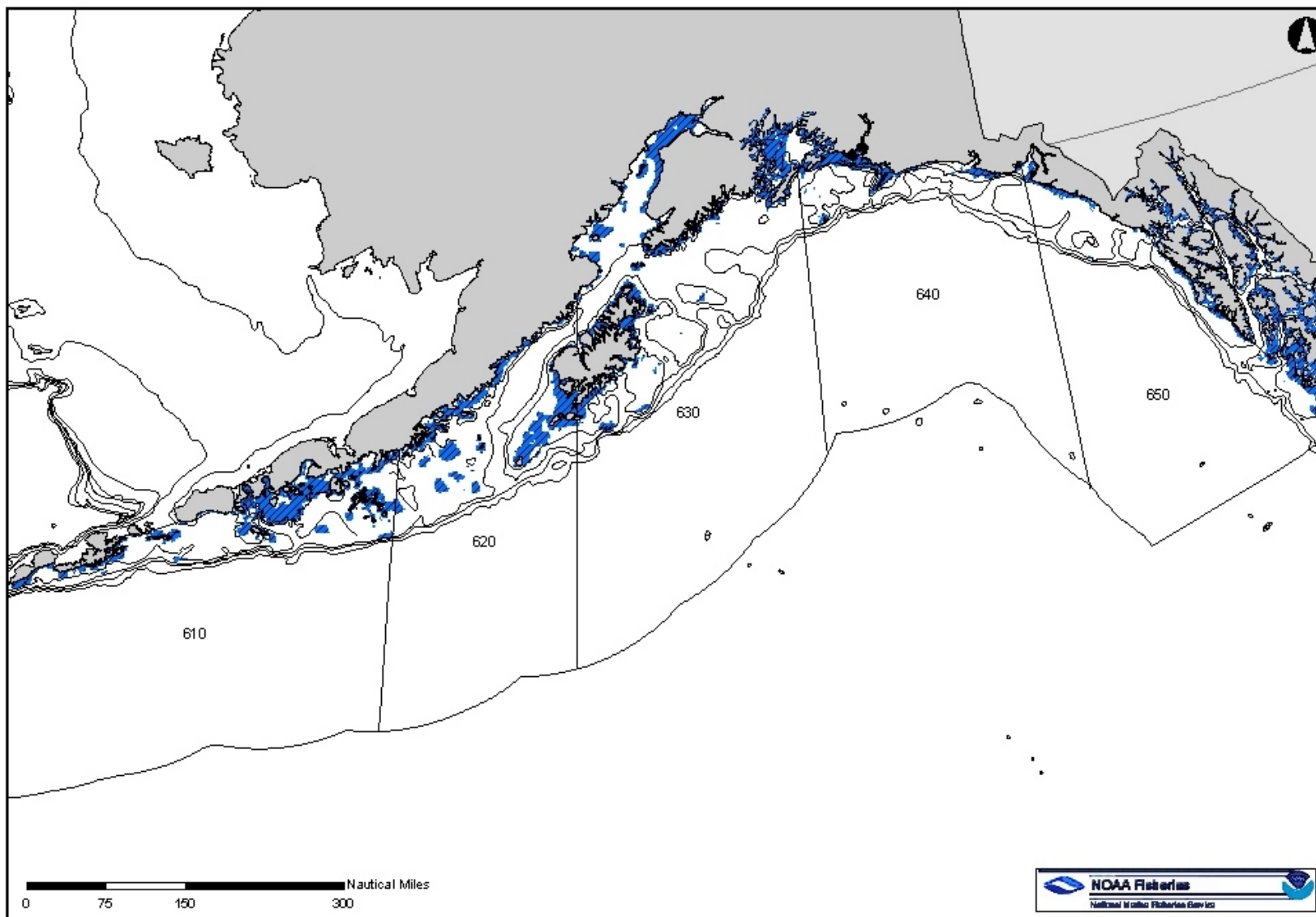


**Figure 2-24.** Alternative 5: Nearshore and Estuarine Essential Fish Habitat

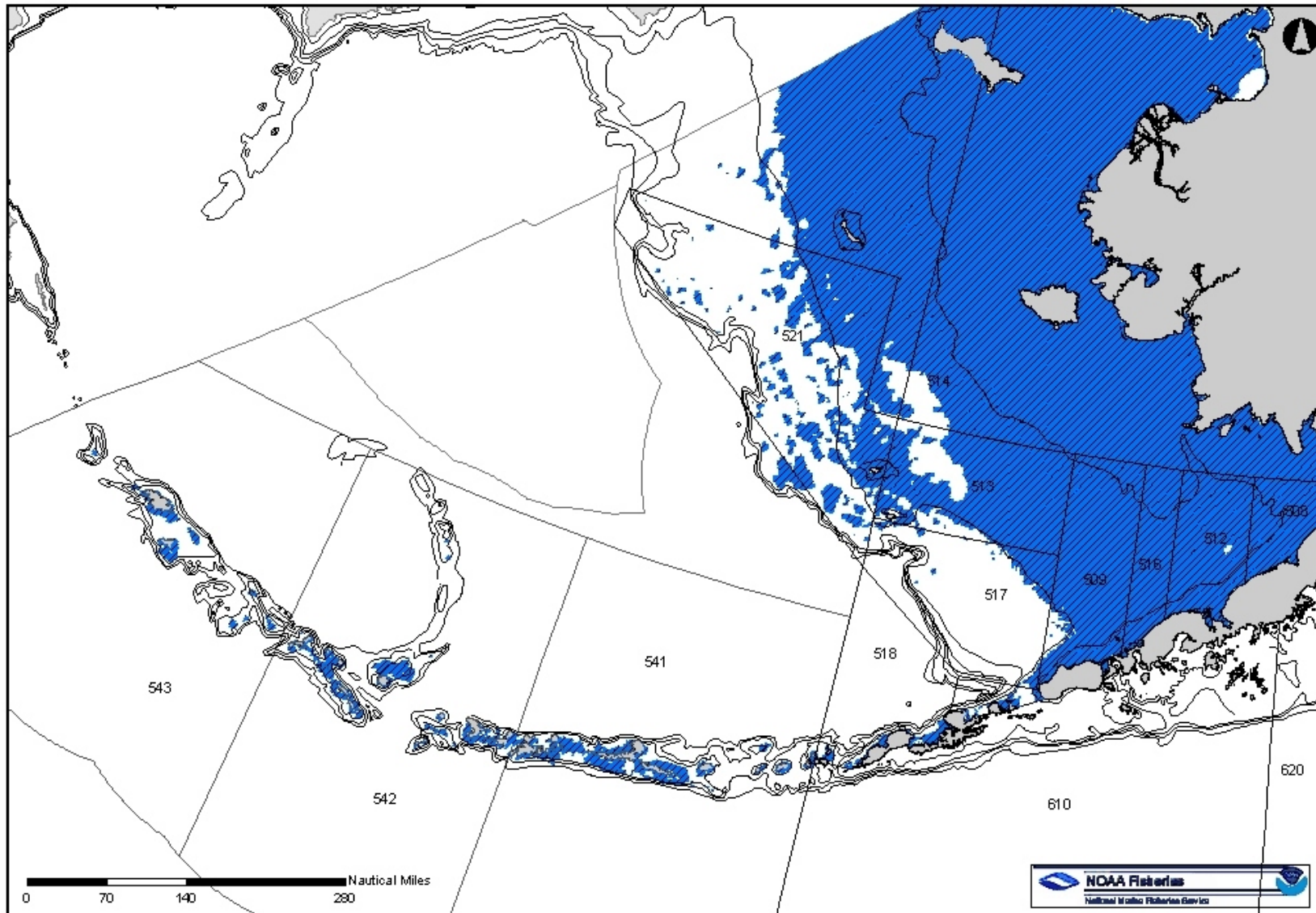




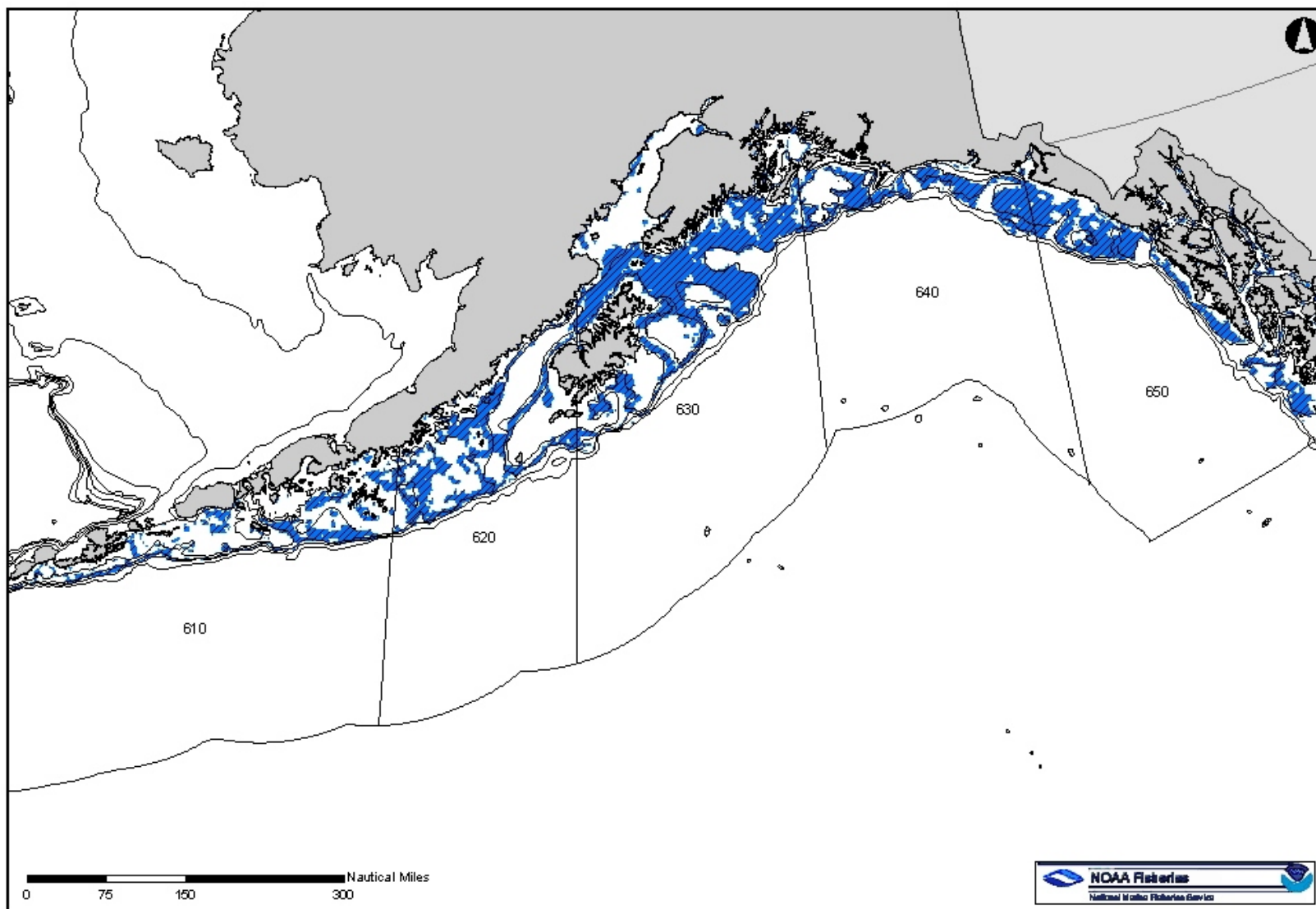
**Figure 2-25.** Alternative 5: Essential Fish Habitat of the GOA Inner and Middle Shelf Ecoregion (0 to 100 m)



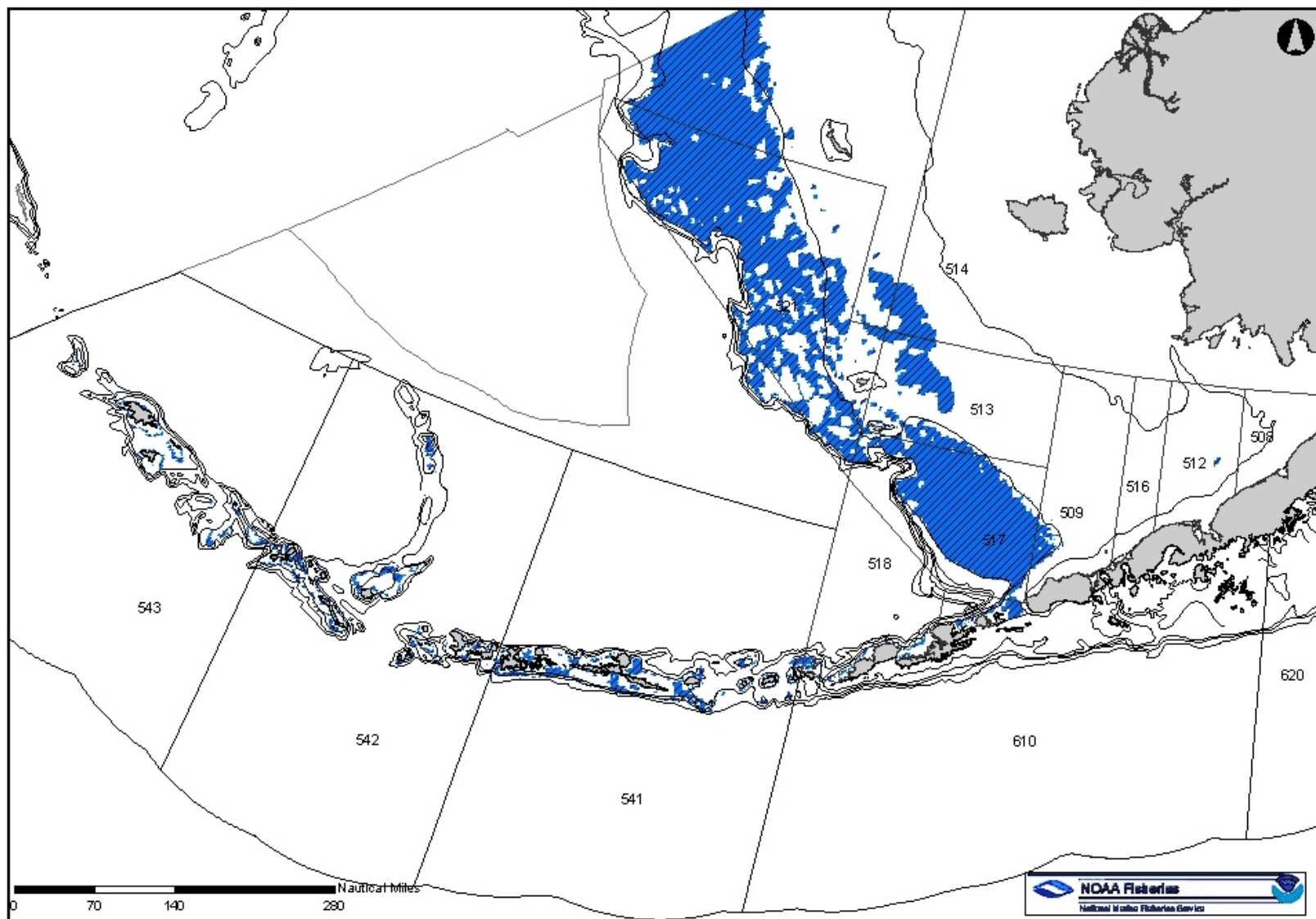
**Figure 2-26.** Alternative 5: Essential Fish Habitat of the BSAI Inner and Middle Shelf Ecoregion (0 to 100 m)



**Figure 2-27.** Alternative 5: Essential Fish Habitat of the GOA Outer Shelf Ecoregion (100 to 200 m)

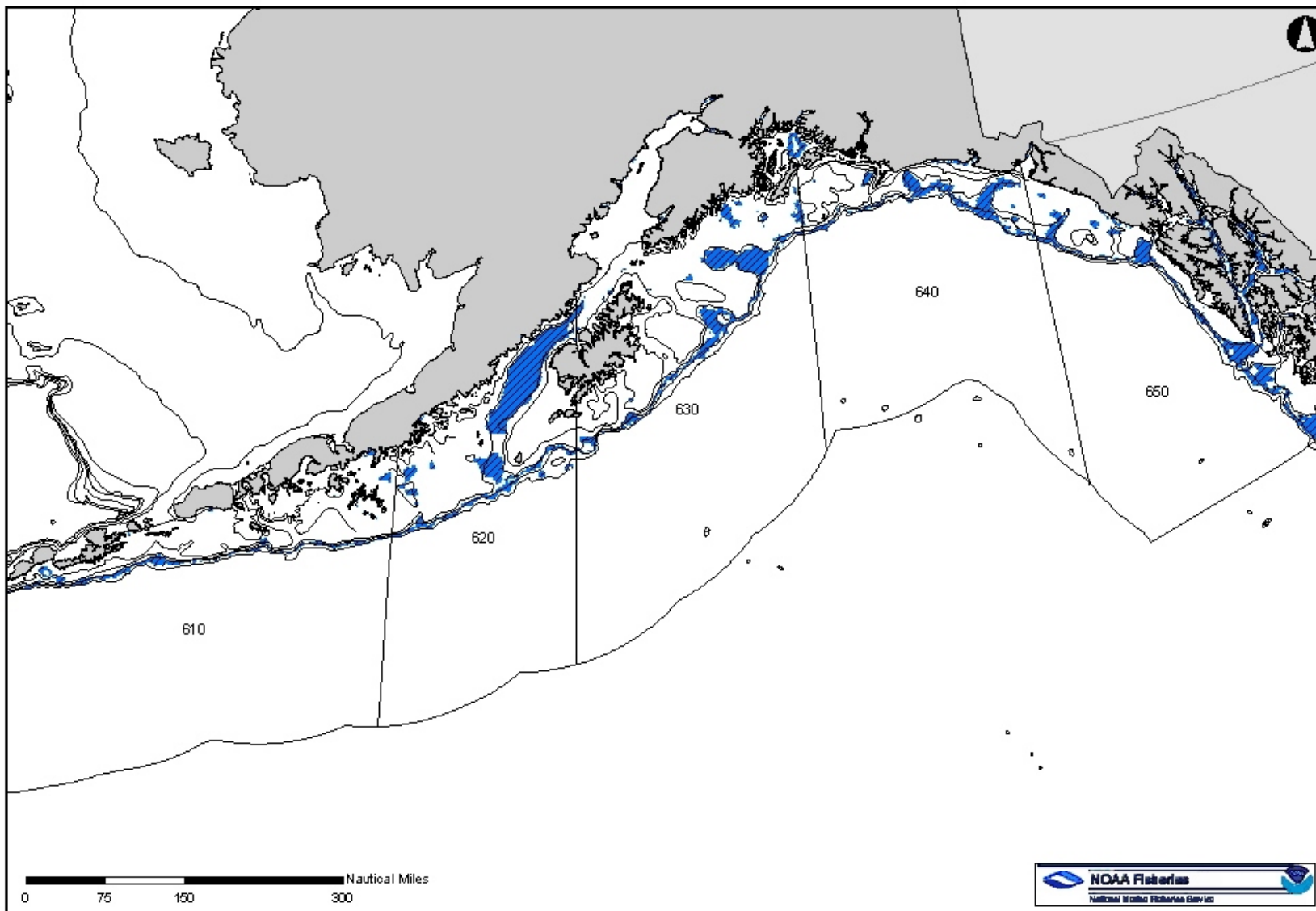


**Figure 2-28.** Alternative 5: Essential Fish Habitat of the BSAI Outer Shelf Ecoregion (100 to 200 m)

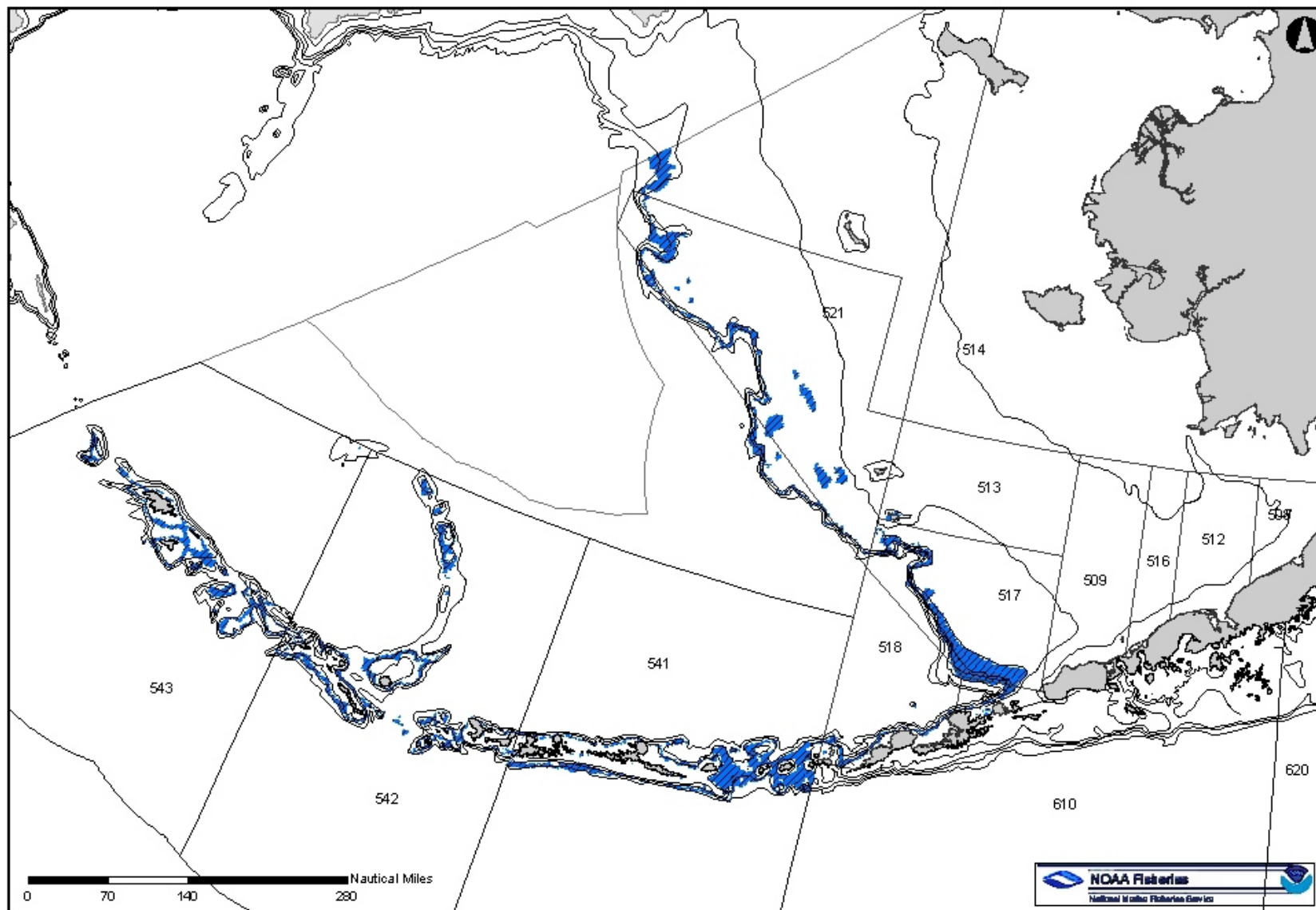




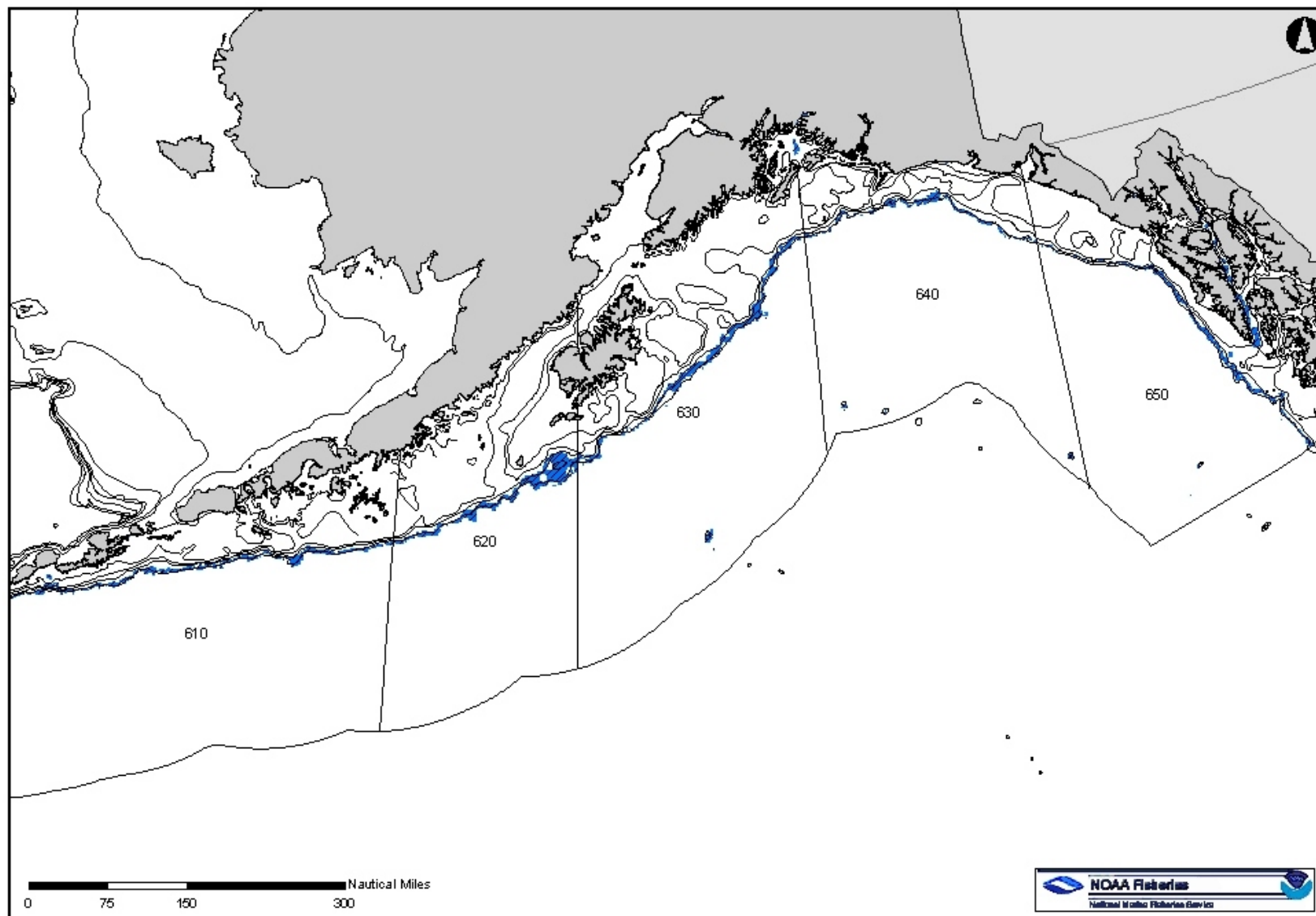
**Figure 2-29.** Alternative 5: Essential Fish Habitat of the GOA Upper Slope Ecoregion (200 to 500 m)



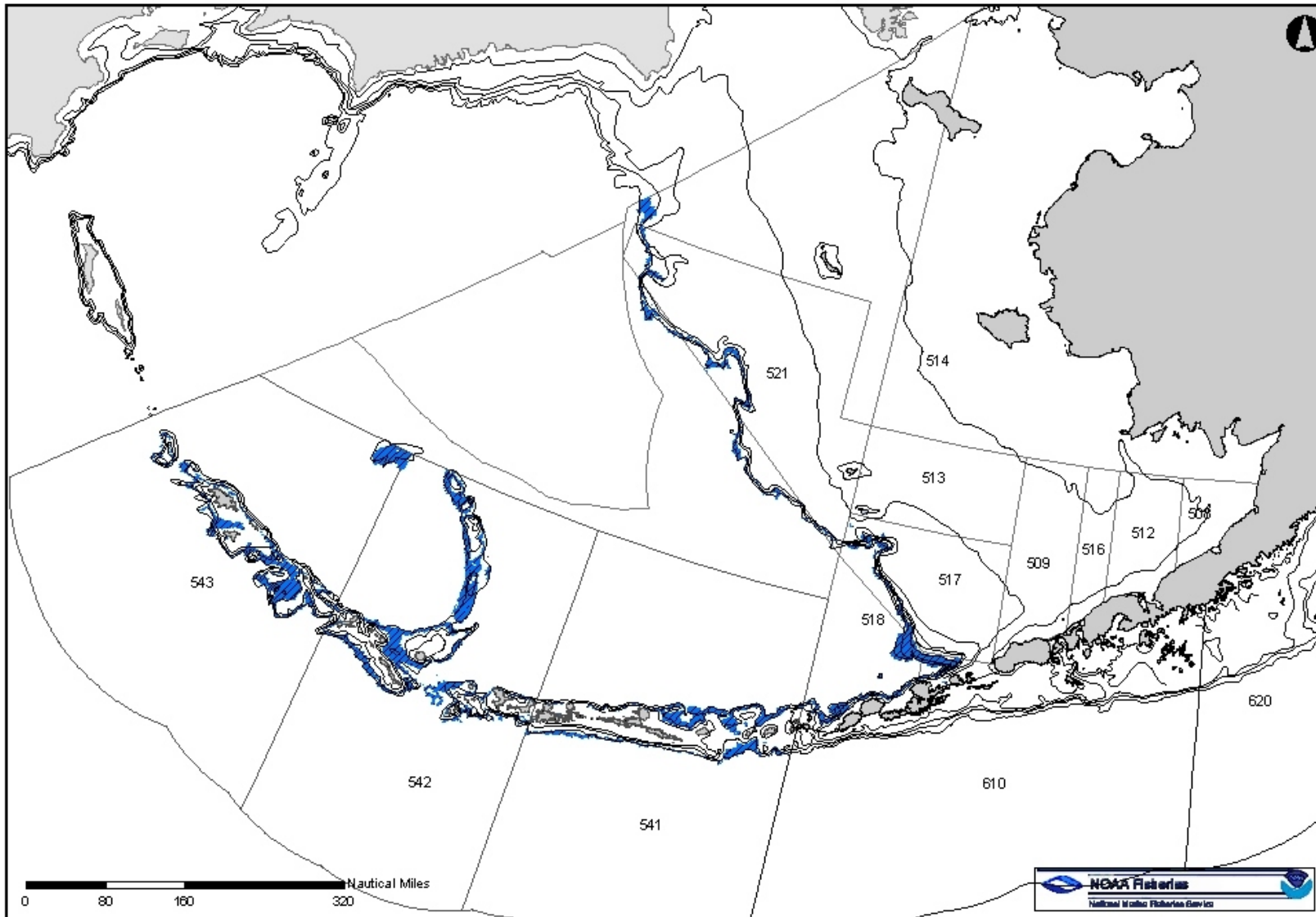
**Figure 2-30.** Alternative 5: Essential Fish Habitat of the BSAI Upper Slope Ecoregion (200 to 500 m)



**Figure 2-31.** Alternative 5: Essential Fish Habitat of the GOA Middle Slope Ecoregion (500 to 1,000 m)

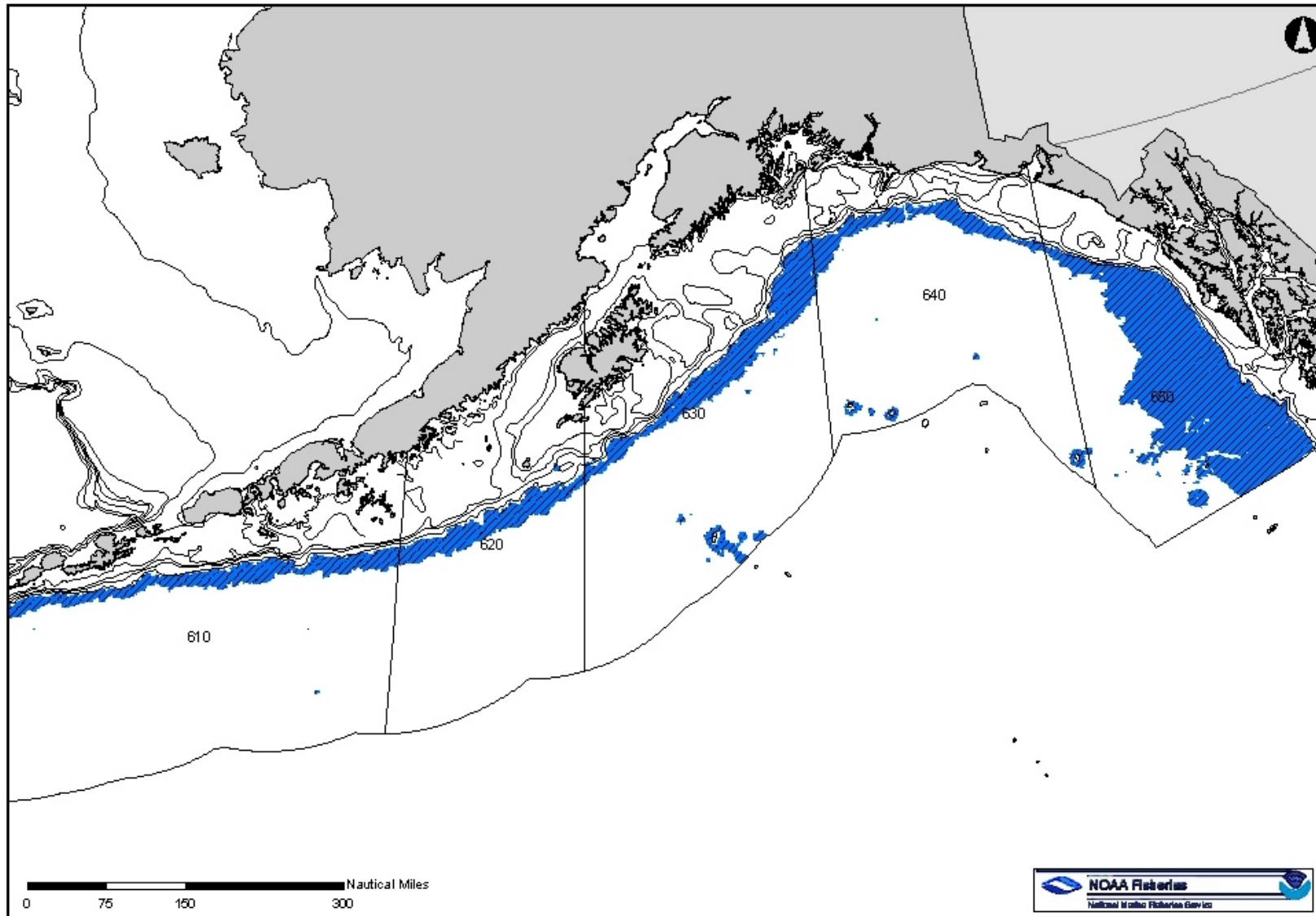


**Figure 2-32.** Alternative 5: Essential Fish Habitat of the BSAI Middle Slope Ecoregion (500 to 1,000 m)

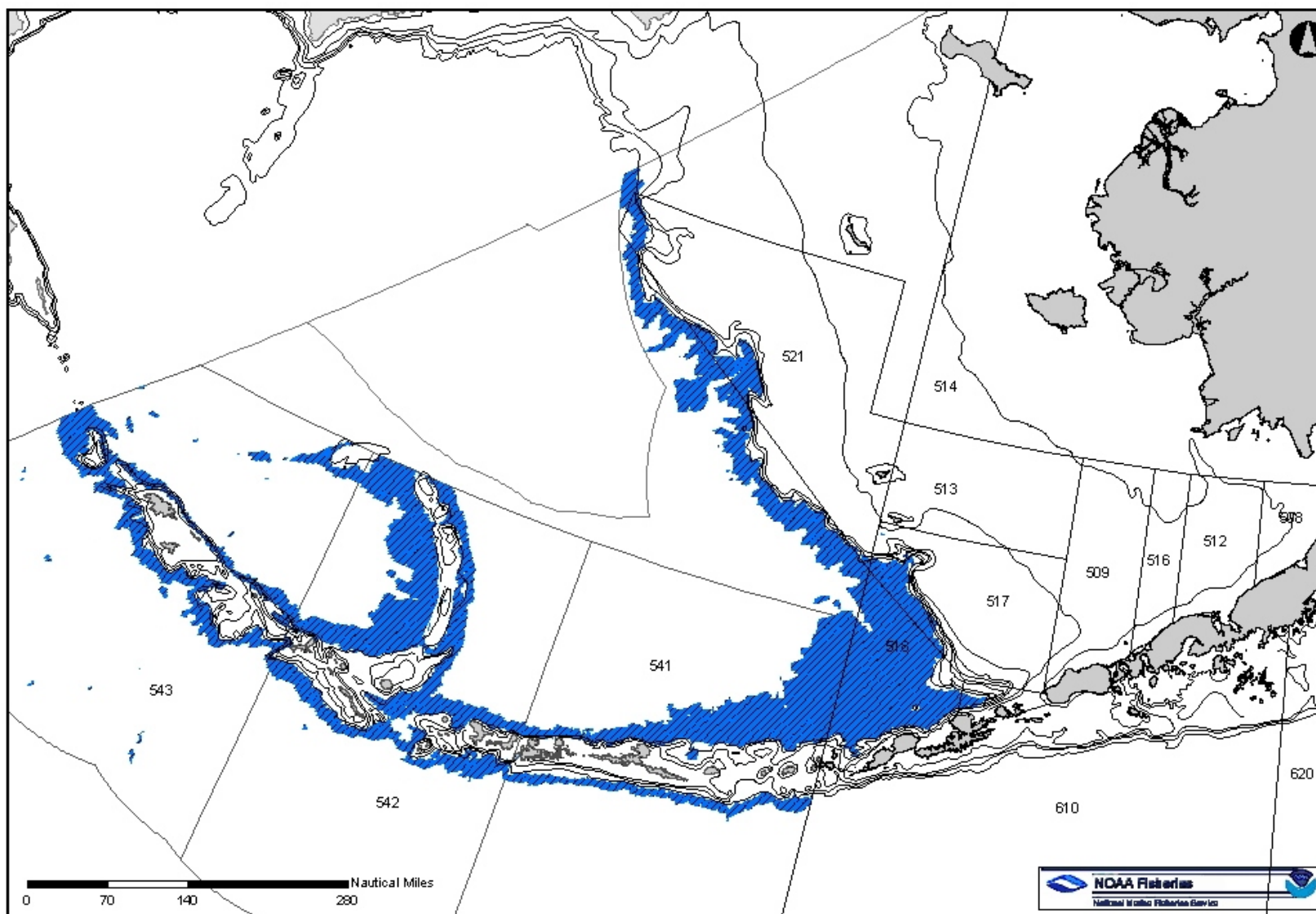




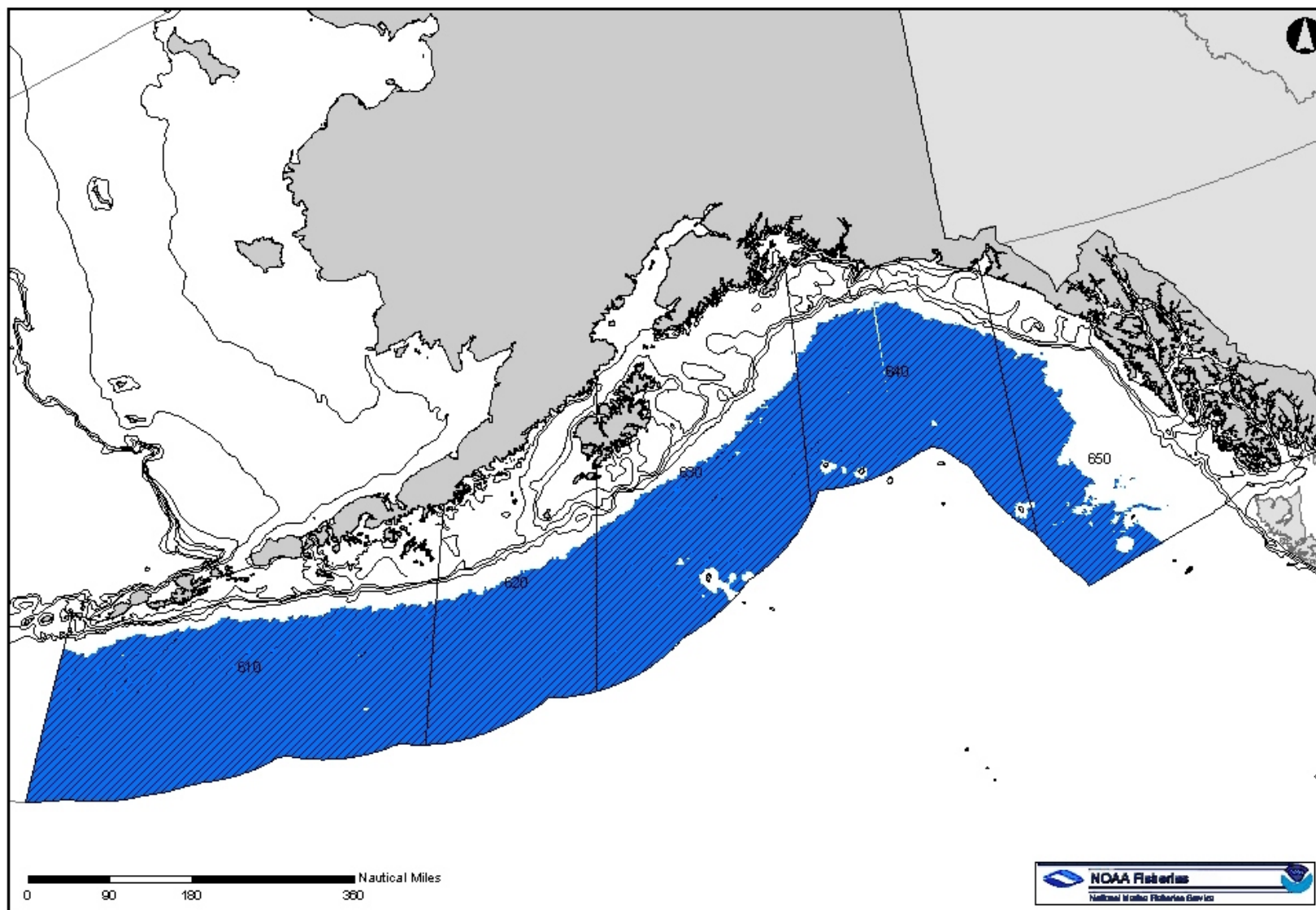
**Figure 2-33.** Alternative 5: Essential Fish Habitat of the GOA Lower Slope Ecoregion (1,000 to 3,000 m)



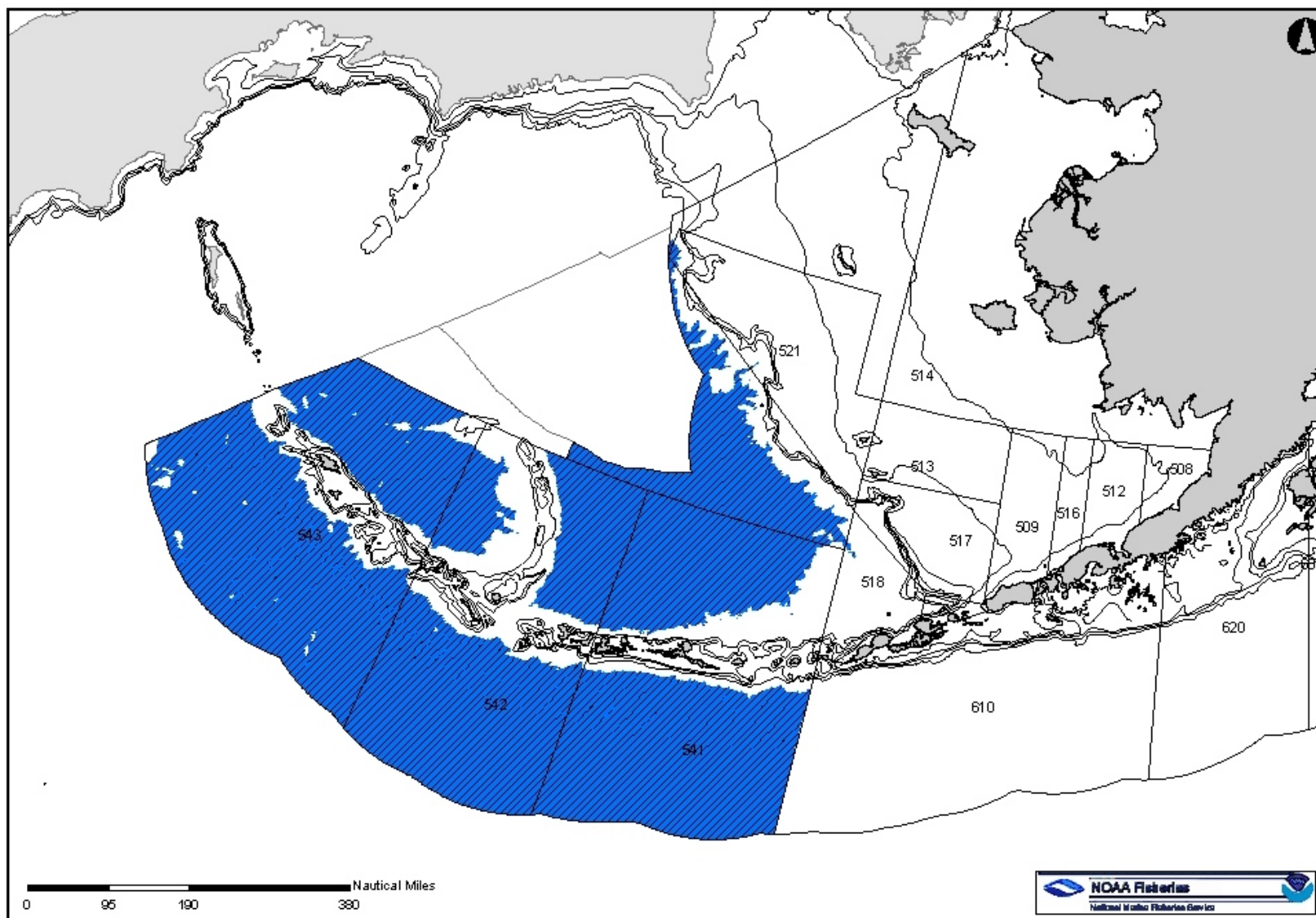
**Figure 2-34.** Alternative 5: Essential Fish Habitat of the BSAI Lower Slope Ecoregion (1,000 to 3,000 m)



**Figure 2-35.** Alternative 5: Essential Fish Habitat of the GOA Basin Ecoregion (>3,000 m)

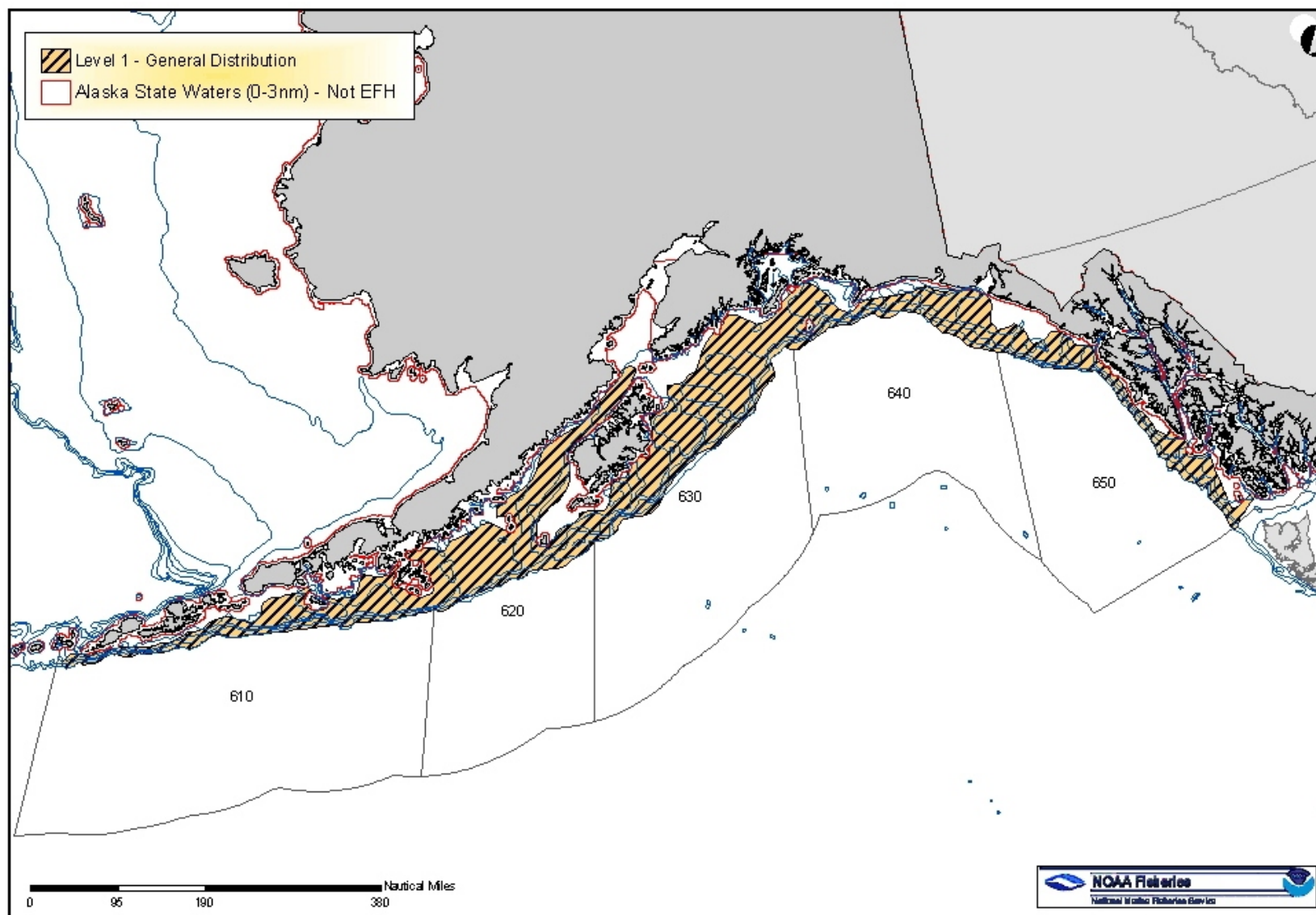


**Figure 2-36.** Alternative 5: Essential Fish Habitat of the BSAI Basin Ecoregion (>3,000 m)





**Figure 2-37.** Alternative 6: Essential Fish Habitat for Late Juvenile and Adult GOA Pacific Ocean Perch



**Figure 2-38.** Alternative 6: Essential Fish Habitat for BSAI Pacific Cod Larval Presence

