

*Department of Human Services  
Addictions and Mental Health Division*



# **Oregon Health Plan Mental Health Utilization Report**

*July 1, 2006  
Through  
June 30, 2007*

**Report Produced Quarterly by  
Program Analysis and Evaluation Team  
JANUARY 2008**



**EXECUTIVE SUMMARY**  
**REPORT ON OREGON HEALTH PLAN (OHP)**  
**UTILIZATION AND ENROLLMENT FOR**  
**MENTAL HEALTH SERVICES:**  
**JULY 2006 THROUGH JUNE 2007**

The Mental Health Organization (MHO) Utilization Quarterly Report for the period of July 1, 2006 through June 31, 2007, contains enrollment, unique served and hospitalization data. The data for this report were pulled January 7, 2008. All information came from the Division of Medical Assistance Programs' (DMAP) Decision Support/Surveillance and Utilization Review System (DSSURS) and is comparable to the report released in October 2007.

**Population**

- This report reflects only Medicaid members who were eligible, enrolled, and received mental health services during the report period.
- The acute care admission population is any enrolled Medicaid member who was admitted for inpatient psychiatric treatment.
- Those who are receiving mental health services and alcohol and drug treatment are included in this report.

**Limitations**

- This report does not include tests of the statistical significance of apparent differences among providers or across time periods.
- The report is a “snap-shot” in time for the specific report being created and is comparable to the report released in July 2007.
- Acute hospitalization data includes and is not limited to transfers from one facility to another and/or re-admitted within a 24-hour time frame.
- There is a 180-day lag between the times a service is delivered and the time the services is contractually required to be billed.

**Formula**

- The calculations for the unique enrollees and/or served is dividing the number of total enrollees by the number served within the same time period.
- The penetration rate, or percentage rate, is a general measure of access and is related to the utilization of services.

**Report Schedule**

This report is created on a quarterly basis.

# TABLE OF CONTENTS

The format and contents are constructed as follows:

- Figures are used to illustrate trends in statewide data.
- Tables are used to summarize quarterly data at the MHO level. Some tables include FFS and All Eligibles.



Executive Summary .....	i
-------------------------	---

## **Enrollment Data:**

Table 1: Unique Members Enrolled by MHO .....	1
Figure 1: Total Unique Members Enrolled by Age Groups .....	1
Table 2: Unique Members Enrolled by Age Groups/MHO .....	2
Table 3: Enrollment Numbers per Month.....	3

## **Served Data:**

Table 4: Unique Members Served by MHO and Percentage Rate.....	4
Figure 2: Total Unique Members Served by Age Groups .....	4
Table 5: Unique Served by MHO/Age Group and Percentage Rate .....	5
Figure 3: Total Unique Served by Ethnicity .....	6
Table 6: Unique Served by MHO/Ethnicity and Percentage Rate .....	6
Figure 4: Total All Quarters: Unique Encounters by Diagnostic Groups .....	9
Table 7: Unique Served Encounters by MHO/Diagnostic Groups.....	9
Table 8: Unique Members Served per Month.....	10

## **Hospital Data:**

Table 9: Unique Hospital Admissions per 1,000 Members Enrolled .....	11
Table 10: Unique Hospital Admissions: Age Groups per 1,000 Members Enrolled ...	11
Table 11: Average Hospital Days of Service.....	12
Table 12: Average Hospital Days by MHO/Age Group .....	13
Table 13: Percent of Hospital Re-Admission within 30 days .....	14
Table 14: Total Hospital Re-Admission within 180 days.....	14
Figure 5: Total Seen by Outpatient within 7 Days of Hospital Discharge.....	15
Table 15: Seen by Outpatient within 7 Days of Hospital Discharge .....	15

## **Glossaries:**

MHO Utilization Report Glossary .....	16
Diagnostic Categories Glossary .....	18
Service Categories Glossary .....	21

# ENROLLMENT DATA

- ❖ Enrolled: Eligible for OHP and enrolled in an MHO
- ❖ Eligibles: Both Enrolled and FFS
- ❖ Fee-For-Service (FFS): Eligible for OHP and NOT enrolled with an MHO (Open Card)



**TABLE 1: UNIQUE MEMBERS ENROLLED BY MHO**

MHO Contractors	2006				2007			
	3 <sup>rd</sup> Qtr	% Enrolled	4 <sup>th</sup> Qtr	% Enrolled	1 <sup>st</sup> Qtr	% Enrolled	2 <sup>nd</sup> Qtr	% Enrolled
ABHA	27,377	7.1%	26,495	7.1%	26,025	7.1%	26,097	7.0%
Clackamas	26,245	6.8%	25,296	6.8%	25,242	6.8%	25,292	6.8%
FamilyCare	10,470	2.7%	10,379	2.8%	9,905	2.7%	10,402	2.8%
GOBHI	32,596	8.5%	31,666	8.5%	30,980	8.4%	30,883	8.3%
JBH	66,472	17.3%	64,910	17.3%	63,757	17.3%	63,816	17.2%
LaneCare	36,816	9.6%	36,010	9.6%	35,251	9.6%	35,404	9.6%
MVBCN	75,018	19.5%	73,485	19.6%	72,727	19.7%	73,460	19.8%
Verity	75,537	19.7%	73,540	19.6%	72,590	19.7%	72,718	19.6%
Washington	33,771	8.8%	32,756	8.7%	32,155	8.7%	32,400	8.7%
<b>Total Enrolled</b>	<b>384,302</b>	<b>100%</b>	<b>374,537</b>	<b>100%</b>	<b>368,632</b>	<b>100%</b>	<b>370,472</b>	<b>100%</b>

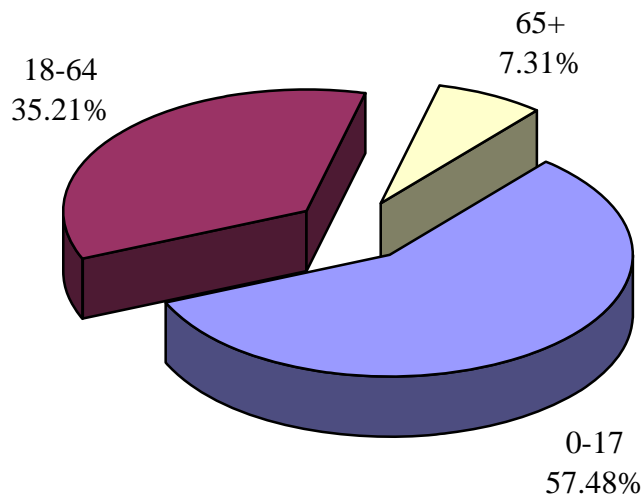
n=Unique Enrolled/d=Total Enrolled

	3 <sup>rd</sup> Qtr	% All Eligibles	4 <sup>th</sup> Qtr	% All Eligibles	1 <sup>st</sup> Qtr	% All Eligibles	2 <sup>nd</sup> Qtr	% All Eligibles
Total Enrolled	384,302	92.3%	374,537	91.8%	368,632	91.1%	370,472	90.9%
FFS <sup>3</sup>	31,998	7.7%	33,647	8.2%	36,224	8.9%	36,916	9.1%
<b>All Eligibles<sup>2</sup></b>	<b>416,300</b>	<b>100%</b>	<b>408,184</b>	<b>100%</b>	<b>404,856</b>	<b>100%</b>	<b>407,388</b>	<b>100%</b>

n=Total Enrolled/d=All Eligibles

n=FFS/d=All Eligibles

**FIGURE 1: TOTAL UNIQUE MEMBERS ENROLLED BY AGE GROUPS**



<sup>3</sup> Fee-For-Service (FFS): Eligible for OHP and NOT enrolled with an MHO (Open Card)

<sup>2</sup> Eligibles: Both Enrolled and FFS

**TABLE 2: UNIQUE MEMBERS Enrolled<sup>1</sup> by Age Groups & Percentage by MHO Total**

MHO Contractors	Age Groups	2006				2007			
		3 <sup>rd</sup> Qtr	% by MHO Qtr Total <sup>2</sup>	4 <sup>th</sup> Qtr	% by MHO Qtr Total	1 <sup>st</sup> Qtr	% by MHO Qtr Total	2 <sup>nd</sup> Qtr	% by MHO Qtr Total
ABHA	0-17	15,702	57.4%	15,300	57.7%	15,186	58.4%	15,552	59.6%
	18-64	9,909	36.2%	9,471	35.7%	9,122	35.1%	8,840	33.9%
	65 +	1,766	6.5%	1,724	6.5%	1,717	6.6%	1,705	6.5%
Clackamas	0-17	15,204	57.9%	14,664	58.0%	14,897	59.0%	15,220	60.2%
	18-64	8,763	33.4%	8,352	33.0%	8,112	32.1%	7,887	31.2%
	65 +	2,278	8.7%	2,280	9.0%	2,233	8.8%	2,185	8.6%
FamilyCare	0-17	5,774	55.1%	5,783	55.7%	5,666	57.2%	6,055	58.2%
	18-64	4,236	40.5%	4,136	39.8%	3,786	38.2%	3,891	37.4%
	65 +	460	4.4%	460	4.4%	453	4.6%	456	4.4%
GOBHI	0-17	18,854	57.8%	18,434	58.2%	18,303	59.1%	18,509	59.9%
	18-64	11,410	35.0%	10,902	34.4%	10,384	33.5%	10,093	32.7%
	65 +	2,332	7.2%	2,330	7.4%	2,293	7.4%	2,281	7.4%
JBH	0-17	35,273	53.1%	34,669	53.4%	34,448	54.0%	35,112	55.0%
	18-64	26,511	39.9%	25,561	39.4%	24,697	38.7%	24,125	37.8%
	65 +	4,688	7.1%	4,680	7.2%	4,612	7.2%	4,579	7.2%
LaneCare	0-17	19,257	52.3%	19,046	52.9%	18,769	53.2%	19,257	54.4%
	18-64	15,469	42.0%	14,858	41.3%	14,371	40.8%	14,012	39.6%
	65 +	2,090	5.7%	2,106	5.8%	2,111	6.0%	2,135	6.0%
MVBCN	0-17	45,382	60.5%	44,860	61.0%	44,899	61.7%	46,106	62.8%
	18-64	25,002	33.3%	23,997	32.7%	23,237	32.0%	22,742	31.0%
	65 +	4,634	6.2%	4,628	6.3%	4,591	6.3%	4,612	6.3%
Verity	0-17	40,401	53.5%	39,619	53.9%	39,520	54.4%	40,258	55.4%
	18-64	28,520	37.8%	27,349	37.2%	26,569	36.6%	25,931	35.7%
	65 +	6,616	8.8%	6,572	8.9%	6,501	9.0%	6,529	9.0%
Washington	0-17	21,630	64.0%	21,055	64.3%	20,935	65.1%	21,480	66.3%
	18-64	9,454	28.0%	9,002	27.5%	8,523	26.5%	8,213	25.3%
	65 +	2,687	8.0%	2,699	8.2%	2,697	8.4%	2,707	8.4%
Total by Quarter	0-17	217,477	56.6%	213,430	57.0%	212,623	57.7%	217,549	58.7%
	18-64	139,274	36.2%	133,628	35.7%	128,801	34.9%	125,734	33.9%
	65 +	27,551	7.2%	27,479	7.3%	27,208	7.4%	27,189	7.3%

<sup>1</sup> Enrolled: Eligible for OHP and enrolled in an MHO<sup>2</sup> Percentage formula: n=unique enrolled by age group/d=MHO total enrolled

**TABLE 3: ENROLLMENT NUMBERS PER MONTH**

MHO Contractor	Jul-06	Aug-06	Sep-06	Oct-06	Nov-06	Dec-06	Jan-07	Feb-07	Mar-07	Apr-07	May-07	Jun-07
ABHA	25,033	25,407	24,679	25,071	24,459	23,362	23,993	23,853	23,931	23,931	24,267	24,111
Clackamas	24,214	24,719	23,912	24,238	23,651	22,768	23,494	23,544	23,581	23,598	23,941	24,001
FamilyCare	9,776	10,154	10,240	10,283	10,095	9,913	9,728	9,773	9,484	9,650	10,157	10,219
GOBHI	29,721	30,331	29,349	29,838	29,128	27,998	28,574	28,614	28,546	28,465	28,879	28,717
JBH	60,838	61,897	60,102	61,319	60,614	58,375	59,348	59,119	59,023	59,086	59,977	59,812
LaneCare	33,901	34,421	33,318	34,187	33,521	32,283	33,161	32,899	32,778	32,801	33,268	33,110
MVBCN	68,925	69,582	67,743	69,459	68,521	66,025	67,509	67,430	67,911	67,962	69,101	69,106
Verity	69,533	70,887	68,897	70,240	69,235	66,648	68,053	67,728	67,961	67,996	68,886	68,783
Washington	30,672	31,194	29,978	30,940	30,345	28,698	29,518	29,548	29,646	29,712	30,322	30,348
<b>Monthly Totals</b>	<b>352,613</b>	<b>358,592</b>	<b>348,218</b>	<b>355,575</b>	<b>349,569</b>	<b>336,070</b>	<b>343,378</b>	<b>342,508</b>	<b>342,861</b>	<b>343,201</b>	<b>348,798</b>	<b>348,207</b>

% Monthly Increase/Decrease	1.67%	-2.98%	2.07%	-1.72%	-4.02%	2.13%	-0.25%	0.10%	0.10%	1.60%	-0.17%
-----------------------------	-------	--------	-------	--------	--------	-------	--------	-------	-------	-------	--------

Eligibles	418,227	416,442	414,230	411,142	408,831	404,580	404,799	404,281	405,487	406,889	407,843	407,432
FPS	65,614	57,850	66,012	55,567	59,262	68,510	61,421	61,773	62,626	63,688	59,045	59,225



# SERVICE DATA

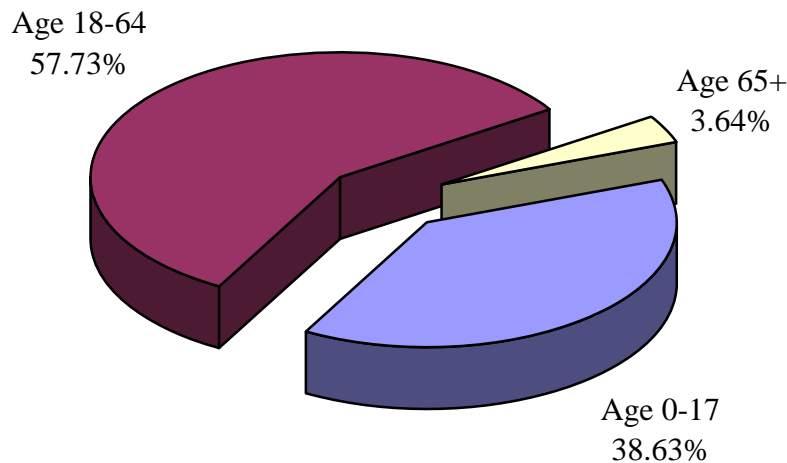




**TABLE 4: UNIQUE MEMBERS SERVED BY MHO AND PERCENTAGE<sup>2</sup> OF ENROLLEES SERVED**

MHO Contractors	2006				2007			
	3 <sup>rd</sup> Qtr	% Rate	4 <sup>th</sup> Qtr	% Rate	1 <sup>st</sup> Qtr	% Rate	2 <sup>nd</sup> Qtr	% Rate
ABHA	2,350	8.6%	2,329	8.8%	2,280	8.8%	2,355	9.0%
Clackamas	2,186	8.3%	2,216	8.8%	2,319	9.2%	2,422	9.6%
FamilyCare	719	6.9%	706	6.8%	688	6.9%	757	7.3%
GOBHI	2,796	8.6%	2,825	8.9%	2,936	9.5%	2,911	9.4%
JBH	5,858	8.8%	5,856	9.0%	6,059	9.5%	6,289	9.9%
LaneCare	4,960	13.5%	4,969	13.8%	4,980	14.1%	5,160	14.6%
MVBCN	6,221	8.3%	6,384	8.7%	6,437	8.9%	6,695	9.1%
Verity	7,982	10.6%	8,262	11.2%	8,627	11.9%	8,705	12.0%
Washington	2,779	8.2%	2,779	8.5%	2,841	8.8%	2,837	8.8%
Total Served	35,851	9.3%	36,326	9.7%	37,167	10.1%	38,131	10.3%
FFS	653	2.0%	657	2.0%	549	1.5%	502	1.4%

**FIGURE 2: TOTAL UNIQUE MEMBERS SERVED BY AGE GROUPS**



<sup>2</sup> Percentage Formula: n=Unique Served/d=Unique Enrolled.

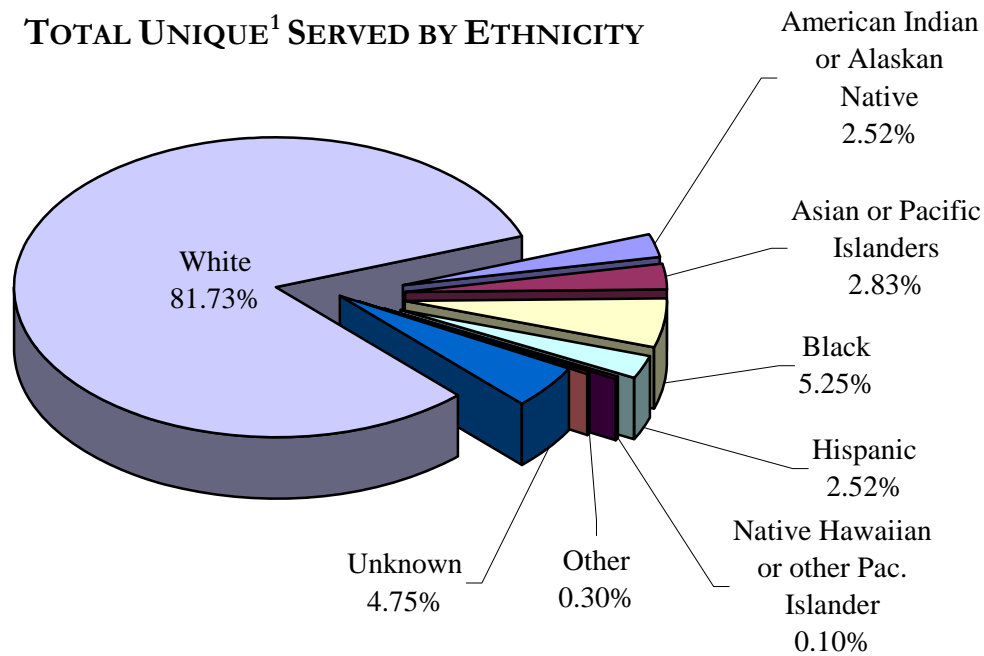
**TABLE 5: UNIQUE<sup>1</sup> SERVED BY MHO/AGE GROUP AND PERCENTAGE<sup>2</sup> OF ENROLLEES SERVED**

MHO Contractors	Age Groups	2006				2007			
		3 <sup>rd</sup> Qtr	Rate	4 <sup>th</sup> Qtr	Rate	1 <sup>st</sup> Qtr	Rate	2 <sup>nd</sup> Qtr	Rate
ABHA	0-17	912	5.8%	930	6.1%	975	6.4%	1,015	6.5%
	18-64	1,383	14.0%	1,340	14.1%	1,258	13.8%	1,279	14.5%
	65+	55	3.1%	59	3.4%	47	2.7%	61	3.6%
Clackamas	0-17	809	5.3%	854	5.8%	907	6.1%	1,001	6.6%
	18-64	1,303	14.9%	1,290	15.4%	1,337	16.5%	1,347	17.1%
	65+	74	3.2%	72	3.2%	75	3.4%	74	3.4%
FamilyCare	0-17	331	5.7%	325	5.6%	330	5.8%	349	5.8%
	18-64	385	9.1%	379	9.2%	354	9.4%	403	10.4%
	65+	3	0.7%	2	0.4%	4	0.9%	5	1.1%
GOBHI	0-17	1,109	5.9%	1,169	6.3%	1,221	6.7%	1,274	6.9%
	18-64	1,591	13.9%	1,567	14.4%	1,607	15.5%	1,545	15.3%
	65+	96	4.1%	89	3.8%	108	4.7%	92	4.0%
JBH	0-17	2,119	6.0%	2,199	6.3%	2,392	6.9%	2,594	7.4%
	18-64	3,573	13.5%	3,500	13.7%	3,509	14.2%	3,525	14.6%
	65+	166	3.5%	157	3.4%	158	3.4%	170	3.7%
LaneCare	0-17	1,894	9.8%	1,905	10.0%	1,970	10.5%	2,138	11.1%
	18-64	2,961	19.1%	2,963	19.9%	2,910	20.2%	2,922	20.9%
	65+	105	5.0%	101	4.8%	100	4.7%	100	4.7%
MVBCN	0-17	2,525	5.6%	2,645	5.9%	2,675	6.0%	2,873	6.2%
	18-64	3,485	13.9%	3,540	14.8%	3,557	15.3%	3,607	15.9%
	65+	211	4.6%	199	4.3%	205	4.5%	215	4.7%
Verity	0-17	2,670	6.6%	2,685	6.8%	2,838	7.2%	3,052	7.6%
	18-64	4,818	16.9%	5,061	18.5%	5,304	20.0%	5,147	19.8%
	65+	494	7.5%	516	7.9%	485	7.5%	506	7.8%
Washington	0-17	1,005	4.6%	1,063	5.0%	1,103	5.3%	1,113	5.2%
	18-64	1,645	17.4%	1,580	17.6%	1,577	18.5%	1,582	19.3%
	65+	129	4.8%	136	5.0%	161	6.0%	142	5.2%
Total Served	0-17	13,374	6.1%	13,775	6.5%	14,411	6.8%	15,409	7.1%
	18-64	21,144	15.2%	21,220	15.9%	21,413	16.6%	21,357	17.0%
	65+	1,333	4.8%	1,331	4.8%	1,343	4.9%	1,365	5.0%

<sup>1</sup> Unique Served: All duplicate records are removed.

<sup>2</sup> Percentage Formula: n=Unique Served/d=Unique Enrolled.

**FIGURE 3: TOTAL UNIQUE<sup>1</sup> SERVED BY ETHNICITY**



**TABLE 6: UNIQUE SERVED BY MHO/ETHNICITY AND PERCENTAGE<sup>2</sup> OF ENROLLEES SERVED**

MHO	Race Description	2006				2007			
		3 <sup>rd</sup> Qtr	Rate	4 <sup>th</sup> Qtr	Rate	1 <sup>st</sup> Qtr	Rate	2 <sup>nd</sup> Qtr	Rate
ABHA	Am. Indian/Alaskan Ntv	55	1.9%	46	1.7%	41	2.0%	35	1.9%
	Asian or Pacific Islanders	10	1.5%	8	1.2%	9	1.4%	8	1.2%
	Black	30	3.3%	23	2.7%	25	3.1%	35	4.1%
	Hispanic	53	0.6%	23	0.2%	4	0.0%	0	0.0%
	Ntv Hawaiian/Pac. Islander	4	3.8%	3	3.3%	4	3.8%	3	2.1%
	Other	5	2.1%	2	0.9%	3	1.3%	4	2.6%
	Unknown	72	14.4%	89	18.5%	101	22.9%	121	2.8%
	White	2,121	3.5%	2,135	3.7%	2,093	3.7%	2,149	3.7%
Clackamas	Am. Indian/Alaskan Ntv	43	3.6%	44	4.4%	48	5.4%	66	7.8%
	Asian or Pacific Islanders	28	2.0%	29	2.0%	29	2.0%	39	2.7%
	Black	51	3.3%	56	3.6%	67	4.0%	58	3.5%
	Hispanic	79	0.6%	61	0.4%	45	0.3%	2	0.0%
	Ntv Hawaiian/Pac. Islander	3	1.9%	4	2.6%	4	2.7%	2	1.3%
	Other	7	2.2%	5	1.7%	7	1.9%	10	4.0%
	Unknown	39	6.4%	60	10.5%	73	11.1%	162	2.7%
	White	1,936	3.6%	1,957	3.8%	2,046	4.0%	2,083	4.1%

<sup>1</sup> Unique Served: All duplicate records are removed.

<sup>2</sup> Percentage Formula: n=Unique Served/d=Unique Enrolled.

**TABLE 6: UNIQUE<sup>1</sup> SERVED BY MHO/ETHNICITY AND PERCENTAGE<sup>2</sup> OF ENROLLEES SERVED (*continued*)**

MHO	Race Description	2006				2007			
		3 <sup>rd</sup> Qtr	Rate	4 <sup>th</sup> Qtr	Rate	1 <sup>st</sup> Qtr	Rate	2 <sup>nd</sup> Qtr	Rate
FamilyCare	Am. Indian/Alaskan Ntv	20	4.5%	20	4.5%	19	4.6%	20	5.1%
	Asian or Pacific Islanders	25	1.4%	27	1.5%	29	1.7%	28	1.6%
	Black	62	2.0%	56	1.8%	59	2.0%	62	2.0%
	Hispanic	19	0.6%	17	0.5%	3	0.1%	0	0.0%
	Ntv Hawaiian/Pac. Islander	0	0.0%	1	0.7%	3	2.1%	0	0.0%
	Other	3	1.2%	2	0.8%	6	3.0%	5	3.1%
	Unknown	13	6.3%	17	7.5%	29	12.6%	38	2.1%
	White	577	2.8%	566	2.7%	540	2.8%	604	3.0%
GOBHI	Am. Indian/Alaskan Ntv	64	3.0%	70	3.7%	68	4.1%	60	3.9%
	Asian or Pacific Islanders	18	3.3%	17	3.5%	17	3.7%	13	2.8%
	Black	25	2.7%	29	3.1%	23	2.6%	24	2.8%
	Hispanic	160	0.8%	162	0.9%	113	0.6%	7	0.1%
	Ntv Hawaiian/Pac. Islander	3	1.9%	3	2.0%	3	2.0%	2	1.2%
	Other	13	4.9%	12	4.6%	10	4.2%	4	2.4%
	Unknown	63	7.6%	49	5.9%	140	17.0%	293	3.6%
	White	2,450	3.8%	2,483	3.9%	2,562	4.1%	2,508	4.1%
JBH	Am. Indian/Alaskan Ntv	186	3.2%	178	3.3%	193	4.0%	193	4.2%
	Asian or Pacific Islanders	18	1.8%	22	2.2%	17	1.8%	17	1.8%
	Black	57	3.0%	55	2.8%	68	3.5%	69	3.5%
	Hispanic	156	1.0%	146	0.9%	24	0.1%	5	0.0%
	Ntv Hawaiian/Pac. Islander	2	0.7%	3	1.1%	10	3.9%	10	4.0%
	Other	14	2.4%	12	2.2%	6	1.1%	15	3.9%
	Unknown	172	8.1%	203	9.7%	453	21.5%	517	6.0%
	White	5,253	3.4%	5,237	3.4%	5,288	3.5%	5,463	3.6%
LaneCare	Am. Indian/Alaskan Ntv	103	5.7%	98	5.9%	90	5.9%	92	6.2%
	Asian or Pacific Islanders	28	2.0%	27	2.1%	23	1.8%	31	2.4%
	Black	114	4.5%	115	4.4%	131	5.0%	126	4.8%
	Hispanic	128	1.5%	134	1.6%	112	1.3%	2	0.0%
	Ntv Hawaiian/Pac. Islander	1	0.9%	1	0.7%	1	0.7%	1	0.7%
	Other	29	5.8%	28	5.3%	21	3.9%	6	1.8%
	Unknown	169	11.1%	155	10.5%	204	13.6%	407	8.1%
	White	4,388	5.1%	4,411	5.3%	4398	5.3%	4,495	5.4%

<sup>1</sup> Unique Served: All duplicate records are removed.

<sup>2</sup> Percentage Formula: n=Unique Served/d=Unique Enrolled.

Data Source: DSSURS - Data Pulled: 1/7/08

0706-0607 Qtr Report.doc

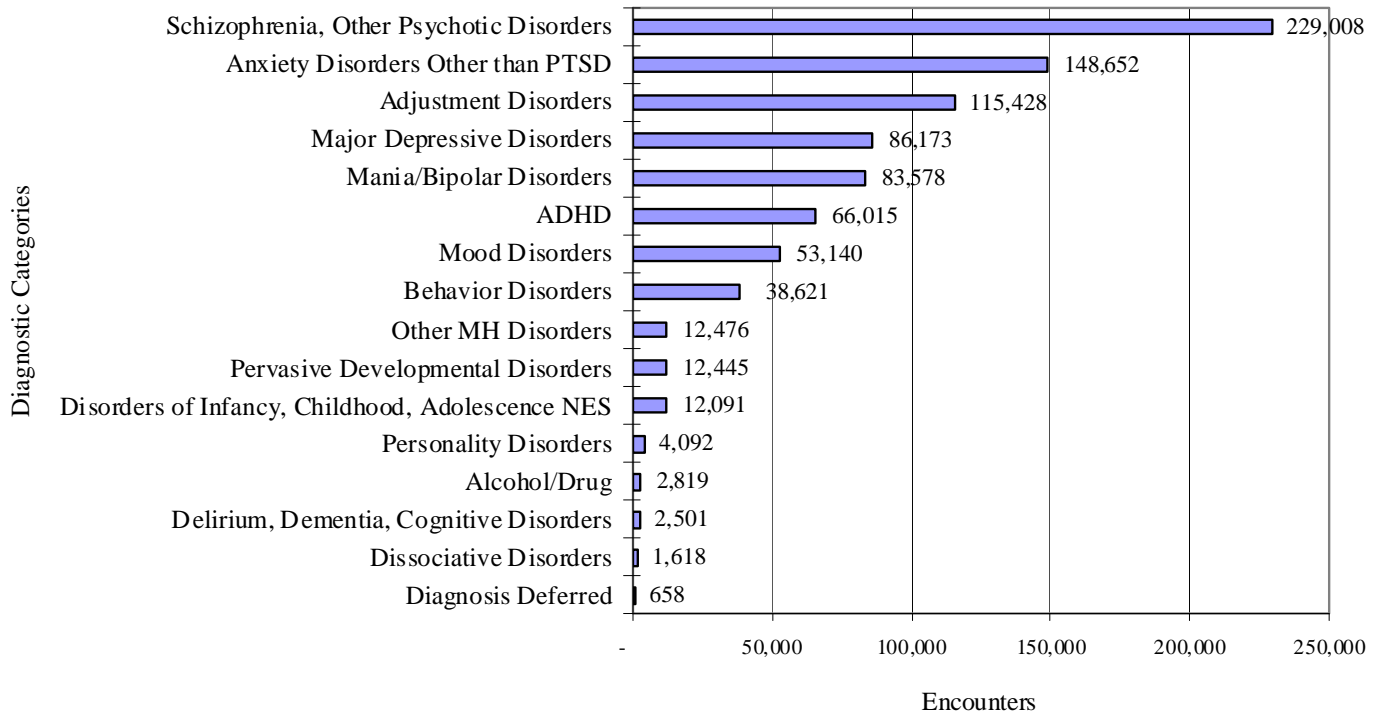
**TABLE 6: UNIQUE<sup>1</sup> SERVED BY MHO/ETHNICITY AND PERCENTAGE<sup>2</sup> OF ENROLLEES SERVED (*continued*)**

MHO	Race Description	2006				2007			
		3 <sup>rd</sup> Qtr	Rate	4 <sup>th</sup> Qtr	Rate	1 <sup>st</sup> Qtr	Rate	2 <sup>nd</sup> Qtr	Rate
MVBCN	Am. Indian/Alaskan Ntv	165	4.9%	152	4.9%	153	5.3%	153	5.6%
	Asian or Pac. Islanders	55	2.1%	46	1.8%	59	2.3%	62	2.5%
	Black	110	3.6%	119	3.9%	115	4.0%	143	4.9%
	Hispanic	379	0.7%	395	0.7%	188	0.3%	15	0.0%
	Ntv Hawaiian/Pac. Islander	6	1.0%	12	1.9%	4	0.7%	7	1.0%
	Other	11	1.6%	12	1.8%	7	1.1%	21	4.1%
	Unknown	109	7.6%	109	7.2%	373	23.6%	612	2.7%
	White	5386	3.8%	5539	4.0%	5538	4.1%	5682	4.2%
Verity	Am. Indian/Alaskan Ntv	275	6.8%	269	7.1%	271	7.9%	286	8.9%
	Asian or Pacific Islanders	710	4.4%	710	4.4%	693	4.4%	711	4.4%
	Black	1230	3.5%	1305	3.7%	1332	3.8%	1356	3.9%
	Hispanic	337	1.0%	349	1.0%	146	0.4%	10	0.0%
	Ntv Hawaiian/Pac. Islander	5	1.0%	5	0.9%	5	1.0%	5	0.9%
	Other	30	1.9%	24	1.6%	19	1.3%	36	3.4%
	Unknown	135	7.9%	154	8.9%	441	25.8%	635	4.2%
	White	5260	4.6%	5446	4.8%	5720	5.2%	5666	5.1%
Washington	Am. Indian/Alaskan Ntv	37	4.9%	32	4.7%	33	5.4%	36	6.1%
	Asian or Pacific Islanders	156	2.8%	149	2.8%	161	3.0%	150	2.8%
	Black	138	3.2%	143	3.4%	160	3.9%	168	4.2%
	Hispanic	183	0.6%	187	0.6%	70	0.2%	4	0.0%
	Ntv Hawaiian/Pac. Islander	4	1.0%	9	2.4%	5	1.4%	4	1.1%
	Other	25	3.1%	22	2.9%	8	1.1%	4	0.8%
	Unknown	101	9.9%	109	11.3%	252	25.4%	333	2.5%
	White	2135	4.5%	2128	4.6%	2152	4.8%	2138	4.8%
Total Served	Am. Indian/Alaskan Ntv	948	4.2%	909	4.4%	916	5.0%	941	5.4%
	Asian or Pacific Islanders	1,048	3.3%	1,035	3.4%	1,037	3.4%	1,059	3.5%
	Black	1,817	3.4%	1,901	3.5%	1,980	3.8%	2,041	3.8%
	Hispanic	1,494	0.8%	1,474	0.8%	705	0.4%	45	0.0%
	Ntv Hawaiian/Pac. Islander	28	1.1%	41	1.7%	39	1.6%	34	1.3%
	Other	137	2.6%	119	2.3%	87	1.8%	105	3.0%
	Unknown	873	8.8%	945	9.6%	2,066	20.6%	3,118	3.7%
	White	29,506	4.0%	29,902	4.1%	30,337	4.2%	30,788	4.3%

<sup>1</sup> Unique Served: All duplicate records are removed.

<sup>2</sup> Percentage Rate Formula: n=Unique Served/d=Unique Enrolled.

**FIGURE 4: TOTAL ALL QUARTERS: UNIQUE ENCOUNTERS: DIAGNOSTIC GROUPS**



**TABLE 7: UNIQUE<sup>1</sup> SERVED ENCOUNTERS<sup>2</sup> BY MHO/DIAGNOSTIC GROUPS IN ASCENDING ORDER BASED ON THE FIRST QUARTER 2007**

MHO Contractors	Diagnostic Group	2006		2007	
		3 <sup>rd</sup> Qtr	4 <sup>th</sup> Qtr	1 <sup>st</sup> Qtr	2 <sup>nd</sup> Qtr
Total Encounters	Schizophrenia, Other Psychotic Disorders	55,358	55,840	58,901	58,909
	Anxiety Disorders Other than PTSD	34,306	35,826	38,412	40,108
	Adjustment Disorders	25,880	27,838	29,882	31,828
	Mania/Bipolar Disorders	19,686	19,945	21,814	22,133
	Major Depressive Disorders	21,676	21,157	21,461	21,879
	ADHD	13,705	15,344	17,862	19,104
	Mood Disorders	12,467	12,719	13,742	14,212
	Behavior Disorders	8,719	9,660	9,920	10,322
	Pervasive Developmental Disorders	2,615	2,755	3,182	3,893
	Other MH Disorders	2,865	3,065	3,312	3,234
	Disorders of Infancy, Childhood, Adolescence NES	2,950	2,837	3,098	3,206
	Personality Disorders	976	994	1,064	1,058
	Delirium, Dementia, Cognitive Disorders	639	630	668	564
	Alcohol/Drug	911	751	665	492
	Dissociative Disorders	449	425	391	353
	Diagnosis Deferred	223	226	154	55

<sup>1</sup> Unique Served: All duplicate records are removed.

<sup>2</sup> Encounters: A contact or admission for covered services to OHP Member – can be 1 or more per member.

**TABLE 8: UNIQUE MEMBERS SERVED PER MONTH**

MHO Contractors	2006						2007					
	Jul	Aug	Sep	Oct	Nov	Dec	Jan	Feb	Mar	Apr	May	Jun
ABHA	1,238	1,303	1,196	1,336	1,289	1,158	1,279	1,235	1,260	1,186	1,368	1,278
Clackamas	1,185	1,316	956	1,056	1,249	1,222	990	1,340	1,415	1,412	1,320	1,286
FamilyCare	345	382	383	398	375	342	369	385	390	397	408	371
GOBHI	1,458	1,566	1,522	1,636	1,549	1,458	1,631	1,585	1,666	1,579	1,654	1,548
JBH	3,045	3,263	3,173	3,373	3,260	2,740	3,276	3,306	3,467	3,626	3,573	3,352
LaneCare	2,730	2,945	2,806	3,026	2,984	2,758	2,960	3,059	3,129	3,129	3,222	3,118
MVBCN	3,188	3,457	3,396	3,579	3,505	3,373	3,593	3,390	3,478	3,501	3,763	3,598
Verity	4,279	4,660	4,506	4,873	4,909	4,577	4,905	4,902	5,466	5,213	5,225	4,919
Washington	1,460	1,626	1,505	1,660	1,611	1,493	1,595	1,602	1,654	1,612	1,634	1,541
<b>Total</b>	<b>18,928</b>	<b>20,518</b>	<b>19,443</b>	<b>20,937</b>	<b>20,731</b>	<b>19,121</b>	<b>20,598</b>	<b>20,804</b>	<b>21,925</b>	<b>21,655</b>	<b>22,167</b>	<b>21,011</b>
FFS	446	461	485	503	473	450	431	422	421	410	394	390



# HOSPITAL DATA



**TABLE 9: UNIQUE<sup>1</sup> HOSPITAL ADMISSIONS PER 1,000 MEMBERS<sup>2</sup> ENROLLED**

MHO Contractors	2006		2007	
	3 <sup>rd</sup> Qtr	4 <sup>th</sup> Qtr	1 <sup>st</sup> Qtr	2 <sup>nd</sup> Qtr
ABHA	1.83	1.62	2.38	1.03
Clackamas	1.83	1.58	1.39	1.82
FamilyCare	4.49	2.70	2.93	1.73
GOBHI	0.61	0.73	0.55	0.45
JBH	2.50	1.86	1.94	1.25
LaneCare	2.66	2.55	2.38	2.54
MVBCN	0.96	0.76	0.77	0.79
Verity	2.81	2.49	2.85	2.81
Washington	1.54	1.80	1.90	1.42
Totals	1.99	1.72	1.83	1.57

(n=Total Admissions/d=Unique Enrolled per 1,000 members)

**TABLE 10: UNIQUE HOSPITAL ADMISSIONS: AGE GROUPS PER 1,000 MEMBERS ENROLLED**

MHO Contractors	Age Group	2006			2007
		3 <sup>rd</sup> Qtr	4 <sup>th</sup> Qtr	1 <sup>st</sup> Qtr	2 <sup>nd</sup> Qtr
ABHA	0-17	0.2	0.3	0.6	0.1
	18-64	4.7	4.1	5.7	2.9
	65+	0.0	0.0	0.6	0.0
Clackamas	0-17	0.3	0.8	0.6	0.7
	18-64	4.9	3.5	3.2	4.3
	65+	0.0	0.0	0.0	0.5
FamilyCare	0-17	1.0	0.7	1.2	0.3
	18-64	9.7	5.8	5.5	4.1
	65+	0.0	0.0	2.2	0.0
GOBHI	0-17	0.1	0.2	0.1	0.2
	18-64	1.5	1.7	1.3	1.1
	65+	0.4	0.4	0.4	0.0
JBH	0-17	0.8	0.6	0.8	0.8
	18-64	5.0	3.8	3.9	2.2
	65+	0.9	0.4	0.2	0.0

(n=Total Admissions/d=Unique Enrolled per 1,000 members)

<sup>1</sup> Unique: All duplicate records are removed.<sup>2</sup> Per 1,000 members is the unique number enrolled divided by 1,000

**TABLE 10: UNIQUE<sup>1</sup> HOSPITAL ADMISSIONS BY AGE GROUPS PER 1,000 MEMBERS<sup>2</sup> ENROLLED (*continued*)**

MHO Contractors	Age Group	2006		2007	
		3 <sup>rd</sup> Qtr	4 <sup>th</sup> Qtr	1 <sup>st</sup> Qtr	2 <sup>nd</sup> Qtr
LaneCare	0-17	0.4	0.1	0.2	0.3
	18-64	5.8	5.7	5.2	5.6
	65+	0.0	2.4	2.4	2.3
MVBCN	0-17	0.2	0.1	0.0	0.2
	18-64	2.4	2.0	2.3	2.2
	65+	0.6	0.4	0.4	0.4
Verity	0-17	0.6	0.8	1.0	0.9
	18-64	6.1	5.3	6.1	6.1
	65+	1.7	0.9	0.9	1.2
Washington	0-17	0.6	0.8	0.8	0.4
	18-64	4.0	4.6	4.8	4.4
	65+	0.7	0.4	1.5	0.7
Total	0-17	0.5	0.5	0.5	0.5
	18-64	4.6	3.9	4.2	3.7
	65+	0.8	0.6	0.8	0.7

(n=Total Admissions/d=Unique Enrolled per 1,000 members)

**TABLE 11: AVERAGE HOSPITAL DAYS OF SERVICE**

MHO Contractors	2006		2007	
	3 <sup>rd</sup> Qtr	4 <sup>th</sup> Qtr	1 <sup>st</sup> Qtr	2 <sup>nd</sup> Qtr
ABHA	4.1	7.5	4.9	8.3
Clackamas	8.4	9.8	6.4	8.6
FamilyCare	5.0	6.0	5.9	6.9
GOBHI	4.7	10.4	5.6	6.9
JBH	6.0	4.8	4.8	5.1
LaneCare	7.1	10.1	10.7	10.0
MVBCN	8.8	12.4	11.1	8.2
Verity	6.6	8.0	9.2	8.9
Washington	5.4	10.1	7.7	9.7
Total	6.5	8.3	7.8	8.4

n=Sum Days of Service/d=Total Discharges

<sup>1</sup> Unique: All duplicated records are removed<sup>2</sup> Per 1,000 members is the unique number enrolled divided by 1,000

**TABLE 12: AVERAGE HOSPITAL DAYS BY MHO/AGE GROUP**

MHO Contractors	Age Groups	2006		2007	
		3 <sup>rd</sup> Qtr	4 <sup>th</sup> Qtr	1 <sup>st</sup> Qtr	2 <sup>nd</sup> Qtr
ABHA	0-17	0.67	6.75	3.33	12.00
	18-64	4.36	7.59	5.12	8.12
	65+	N/A	N/A	8.00	N/A
Clackamas	0-17	14.00	5.55	7.11	7.45
	18-64	7.70	11.41	6.12	8.82
	65+	N/A	N/A	N/A	15.00
FamilyCare	0-17	4.67	6.75	5.86	5.50
	18-64	5.10	5.92	5.71	7.12
	65+	N/A	N/A	10.00	N/A
GOBHI	0-17	2.00	8.00	7.00	7.67
	18-64	5.12	10.61	5.86	4.45
	65+	3.00	17.00	N/A	N/A
JBH	0-17	6.45	7.91	6.15	5.89
	18-64	5.83	4.12	4.38	4.74
	65+	9.75	2.50	5.00	N/A
LaneCare	0-17	7.50	6.00	7.75	6.67
	18-64	7.01	10.33	10.19	10.25
	65+	N/A	8.20	21.20	10.80
MVBCN	0-17	10.38	3.67	22.00	7.14
	18-64	8.05	13.58	10.94	7.47
	65+	20.67	9.50	11.00	30.00
Verity	0-17	5.27	4.94	7.23	8.61
	18-64	6.59	8.51	9.27	8.82
	65+	10.73	10.33	20.50	13.00
Washington	0-17	6.58	7.59	8.63	9.75
	18-64	4.95	11.10	7.44	9.11
	65+	8.00	10.00	7.25	21.00
Totals	0-17	6.57	6.31	6.92	7.59
	18-64	6.31	8.70	7.77	8.27
	65+	11.33	9.06	14.43	16.67

n=Sum Days of Service/d=Total Discharges

n/a=no discharges within that quarter/age group

**TABLE 13: PERCENT OF HOSPITAL RE-ADMISSION WITHIN 30 DAYS**

MHO Contractors	2006		2007	
	3 <sup>rd</sup> Qtr	4 <sup>th</sup> Qtr	1 <sup>st</sup> Qtr	2 <sup>nd</sup> Qtr
ABHA	6.0%	9.3%	4.8%	18.5%
Clackamas	6.3%	7.5%	17.1%	4.3%
FamilyCare	17.0%	7.1%	13.8%	22.2%
GOBHI	0.0%	4.3%	0.0%	0.0%
JBH	11.4%	9.9%	11.3%	18.8%
LaneCare	11.2%	6.5%	10.7%	7.8%
MVBCN	2.8%	14.3%	5.4%	6.9%
Verity	8.0%	13.7%	16.4%	16.7%
Washington	7.7%	25.4%	11.5%	10.9%
<b>Total</b>	<b>8.8%</b>	<b>11.8%</b>	<b>11.9%</b>	<b>13.0%</b>

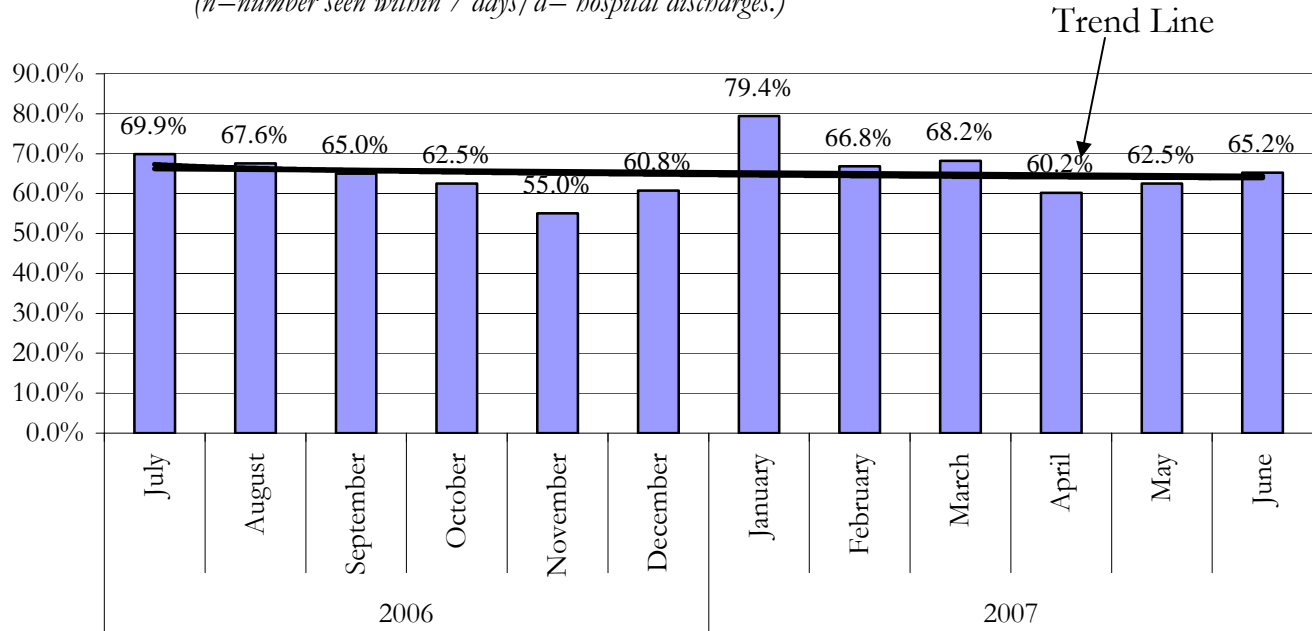
n=Unique readmissions within 30 days/d=unique discharges

**TABLE 14: TOTAL HOSPITAL RE-ADMISSION WITHIN 180 DAYS**

MHO Contractors	2006		2007	
	3 <sup>rd</sup> Qtr	4 <sup>th</sup> Qtr	1 <sup>st</sup> Qtr	2 <sup>nd</sup> Qtr
ABHA	8.0%	23.3%	14.5%	33.3%
Clackamas	6.3%	10.0%	31.4%	17.4%
FamilyCare	19.1%	28.6%	31.0%	33.3%
GOBHI	5.0%	17.4%	29.4%	21.4%
JBH	13.9%	23.1%	25.0%	35.0%
LaneCare	13.3%	15.2%	17.9%	22.2%
MVBCN	4.2%	28.6%	16.1%	20.7%
Verity	9.4%	25.1%	33.8%	35.3%
Washington	9.6%	28.8%	23.0%	21.7%
<b>Total</b>	<b>10.6%</b>	<b>22.8%</b>	<b>25.6%</b>	<b>28.8%</b>

n=Unique readmissions within 180 days/d=unique discharges

**FIGURE 5: TOTAL SEEN BY OUTPATIENT WITHIN 7 DAYS OF HOSPITAL DISCHARGE**  
 (All re-admissions are included in the hospital discharge numbers. All Mental Health Diagnoses is included in the outpatient numbers.)  
 (n=number seen within 7 days/d= hospital discharges.)



**TABLE 15: SEEN BY OUTPATIENT WITHIN 7 DAYS OF HOSPITAL DISCHARGE**  
 (All re-admissions are included in the hospital discharge numbers. All mental health diagnoses are included in the outpatient numbers).

MHO Contractors	2006		2007	
	3 <sup>rd</sup> Qtr	4 <sup>th</sup> Qtr	1 <sup>st</sup> Qtr	2 <sup>nd</sup> Qtr
ABHA	80.0%	60.5%	67.7%	66.7%
Clackamas	62.5%	52.5%	82.9%	60.9%
FamilyCare	19.1%	7.1%	27.6%	11.1%
GOBHI	60.0%	52.2%	82.4%	0.0%
JBH	63.3%	56.2%	66.9%	61.3%
LaneCare	61.2%	55.4%	57.1%	60.0%
MVBCN	59.7%	71.4%	48.2%	63.8%
Verity	59.9%	61.7%	68.6%	62.3%
Washington	57.7%	66.1%	55.7%	69.6%
Total	59.6%	57.7%	63.3%	60.5%

(n=Seen Within 7 days/d=Hospital Discharges)

# GLOSSARIES





---

## MHO UTILIZATION REPORT GLOSSARY

### **ADDICTIONS AND MENTAL HEALTH DIVISION (AMH):**

The division office of DHS responsible for the administration of mental health services for the State of Oregon.

### **DIAGNOSIS CATEGORY:**

Diagnosis categories are defined by the grouping of diagnoses in the most recent version of the American Psychiatric Association's Diagnostic and Statistical Manual (DSM).

### **ELIGIBLE:**

An individual eligible for services under the OHP, but may not be enrolled into an MHO. Includes enrolled and fee-for-service.

### **ENCOUNTER:**

An outpatient contact or Acute Inpatient Hospital Psychiatric Care admission for Covered Services provided to an OHP Member.

### **ENROLLED (ENROLLEE):**

Eligible for the Oregon Health Plan (OHP) and enrolled in an MHO.

### **FEE-FOR-SERVICE (FFS):**

Individuals who are eligible for the OHP, but are not enrolled with an MHO. This is also known as fee-for-service (FFS) or an "open card".

### **MENTAL HEALTH ORGANIZATION (MHO):**

A Prepaid Health Plan under contract with DHS to provide Covered Services under the OHP Medicaid Demonstration Project and State Children's Health Insurance Program (SCHIP). MHOs can be FCHPs, CMHPs, or private MHOs or combinations thereof.

### **OREGON HEALTH PLAN (OHP):**

Oregon's health care reform effort consisting of a Medicaid Demonstration Project, State Children's Health Insurance Program, an individual insurance program for persons excluded from health insurance coverage due to pre-existing health conditions, and a group insurance program for small businesses. One objective of this reform effort includes universal coverage for Oregonians. In the context of this report, OHP refers to all individuals on FFSMHO Utilization Report Glossary

## **MHO UTILIZATION REPORT GLOSSARY** *(Continued)*

**PERCENT ENROLLEES SERVED:**

This is a general measure of access, but more related to utilization of services. It is a percentage calculated by summing the unique enrollees seen during a given time period and dividing that number by the total enrollees for that time period. For example, if there is 10,000 enrollees statewide in a given month and during that same month 500 of those enrollees receive services, the percent of enrollees served is 5%.

**PERCENTAGE RATE:**

A percent of the total enrollees that received services within a given time period.

**SERVICE CATEGORY:**

Service category is a descriptive grouping of service codes (BA, ECC, and CPT) that are similar procedurally.

**UNIQUE SERVED:**

Unduplicated number of individuals receiving mental health services.

**UNIQUE ENCOUNTERS:**

Unduplicated services received by an individual(s) within a specific time period. One individual may have had several services provided – each service would be part of the calculations.

## **DIAGNOSTIC CATEGORIES GLOSSARY WITH SPECIFIC DSMIV CODES**

The following codes include, but are not limited to procedure codes used by service providers within the reporting period for this report.

### **ADHD:**

314; 314.0; 314.00; 314.01; 314.1; 314.9; 314.90

### **ADJUSTMENT DISORDERS:**

309.00; 309.1; 309.2; 309.21; 309.22; 309.23; 309.24; 309.28; 309.29; 309.3; 309.4;  
309.40; 309.80; 309.82; 309.83; 309.89; 309.9

### **ALCOHOL/DRUG:**

291.3; 291.4; 291.5; 291.81; 291.89; 291.9; 292.0; 292.11; 292.12; 292.2; 292.84;  
292.9; 303.00; 303.01; 303.02; 303.90; 303.91; 303.92; 303.93; 304.00; 304.01;  
304.03; 304.10; 304.20; 304.23; 304.3; 304.30; 304.31; 304.33; 304.40; 304.41;  
304.42; 304.43; 304.70; 304.71; 304.80; 304.81; 304.83; 304.90; 305.00; 305.01;  
305.02; 305.03; 305.1; 305.20; 305.21; 305.22; 305.23; 305.30; 305.40; 305.50;  
305.60; 305.61; 305.62; 305.70; 305.71; 305.72; 305.73; 305.90; 305.91

### **ANXIETY DISORDER OTHER THAN PTSD:**

293.84; 300.0; 300.00; 300.01; 300.02; 300.09; 300.10; 300.20; 300.21; 300.22;  
300.23; 300.29; 300.3; 308.3; 308.9

### **BEHAVIOR DISORDERS:**

312.00; 312.01; 312.02; 312.30; 312.31; 312.32; 312.34; 312.39; 312.4; 312.8;  
312.80; 312.81; 312.82; 312.89; 312.9; 313.69; 313.81

### **DELIRIUM, DEMENTIA, COGNITIVE DISORDERS:**

290.0; 290.10; 290.11; 290.12; 290.13; 290.20; 290.21; 290.3; 290.40; 290.41;  
290.42; 290.43; 291.0; 291.2; 292.82; 292.83; 292.89; 293.0; 293.84; 294.0; 294.1;  
294.10; 294.11; 294.8; 294.9; 294.90; 310.0; 310.1; 310.10

### **DIAGNOSIS DEFERRED:**

799.9

**DIAGNOSTIC CATEGORIES GLOSSARY**  
**WITH SPECIFIC DSM-IV CODES**  
(*CONTINUED*)

**DISORDERS OF INFANCY, CHILDHOOD, ADOLESCENCE NES:**

299.10; 307.0; 307.20; 307.22; 307.23; 307.3; 307.6; 307.7; 307.9; 313.0; 313.23;  
313.82; 313.89; 313.9; 315.00; 315.31; 315.32; 315.39; 315.4; 315.9; 317.0; 318.0;  
318.1; 318.2; 319.0; 787.6

**DISSOCIATIVE DISORDERS:**

300.12; 300.13; 300.14; 300.15; 300.6

**MAJOR DEPRESSIVE DISORDERS:**

296.2; 296.20; 296.21; 296.22; 296.23; 296.24; 296.25; 296.26; 296.3; 296.30;  
296.31; 296.32; 296.33; 296.34; 296.35; 296.36

**MANIA/BIPOLAR DISORDERS:**

296; 296.0; 296.00; 296.01; 296.02; 296.03; 296.04; 296.05; 296.06; 296.09; 296.10;  
296.11; 296.12; 296.13; 296.15; 296.4; 296.40; 296.41; 296.42; 296.43; 296.44;  
296.45; 296.46; 296.50; 296.51; 296.52; 296.53; 296.54; 296.55; 296.56; 296.6;  
296.60; 296.61; 296.62; 296.63; 296.64; 296.65; 296.66; 296.7; 296.70; 296.8;  
296.80; 296.81; 296.82; 296.89

**MOOD DISORDERS WITHOUT BEHAVIOR, MANIA AND BIPOLAR:**

293.83; 296.9; 296.90; 296.99; 300.4; 300.40; 301.13; 311; 311.0; 311.00

**OTHER MENTAL HEALTH (MH) DISORDERS:**

293.89; 293.9; 296.74; 300.11; 300.16; 300.19; 300.7; 300.81; 300.82; 300.9; 302.2;  
302.4; 302.70; 302.73; 302.9; 305.93; 306.3; 307.1; 307.42; 307.44; 307.45; 307.46;  
307.47; 307.50; 307.51; 307.52; 307.53; 307.59; 307.80; 307.89; 307.9; 308.0;  
308.1; 308.2; 309.29; 316; 780.52; 780.59; 968.9; 995.2; 995.50; 995.52; 995.53;  
995.54; 995.81; V61.0; V61.10; V61.20; V61.21; V61.8; V61.9; V62.81; V62.82;  
V62.89; V62.9; V65.40; V71.01; V71.02; V71.09

**PERSONALITY DISORDERS:**

301.0; 301.10; 301.12; 301.20; 301.22; 301.3; 301.4; 301.50; 301.6; 301.7; 301.81;  
301.82; 301.84; 301.89; 301.9; 301.83

**DIAGNOSTIC CATEGORIES GLOSSARY**  
**WITH SPECIFIC DSMIV CODES**  
*(Continued)*

**PERVASIVE DEVELOPMENTAL DISORDERS:**

299.0; 299.00; 299.80

**POST-TRAUMATIC STRESS DISORDER (PTSD):**

309.81

**SCHIZOPHRENIA, OTHER PSYCHOTIC DISORDERS:**

293.81; 293.82; 295.0; 295.00; 295.02; 295.03; 295.10; 295.11; 295.12; 295.13;  
295.14; 295.15; 295.20; 295.22; 295.23; 295.24; 295.3; 295.30; 295.31; 295.32;  
295.33; 295.34; 295.35; 295.40; 295.42; 295.43; 295.45; 295.50; 295.60; 295.61;  
295.62; 295.64; 295.65; 295.7; 295.70; 295.71; 295.73; 295.74; 295.75; 295.80;  
295.82; 295.9; 294.90; 295.91; 295.92; 295.93; 295.94; 295.95; 297.1; 297.2; 297.3;  
297.30; 297.9; 298.0; 298.8; 298.9; 298.90; 299.01

## **SERVICE CATEGORIES GLOSSARY WITH SPECIFIC PROCEDURES CODES**

### **ALTERNATIVES TO INPATIENT HOSPITALIZATION:**

H0035; H2013

### **ASSERTIVE COMMUNITY TREATMENT:**

H0039

### **ASSESSMENT & EVALUATION:**

90801; 90802; 96100; 99090; 99214; 99222; 99223; 99231; 99232; 99233; 99238;  
99239; BA008; BA010; BA011; H0002; H0031

### **CASE MANAGEMENT:**

99371; BA046; BA047; BA147; T1016

### **CHILD & FAMILY TEAM MEETINGS:**

H0032

### **CONSULTATION:**

90882; 90887; 99255; BA017

### **CRISIS INTERVENTION:**

S9484

### **FAMILY THERAPY:**

90846; 90849; BA013; BA016

### **GROUP THERAPY:**

90853; 90857; BA015; BA115

### **INDIVIDUAL THERAPY:**

90804; 90805; 90806; 90807; 90808; 90809; 90810; 90811; 90812; 90813; 90814;  
90815; BA011; BA111; H0004

### **INTERPRETIVE SERVICES:**

T1013

### **ISA - AE:**

H0018

## SERVICE CATEGORIES GLOSSARY WITH SPECIFIC PROCEDURES CODES

*(Continued)*

**ISA - DAY TREATMENT:**

ECC13; H0037; H2012

**ISA - MST:**

H2033

**ISA - RESIDENTIAL:**

ECC11; H0019

**LEVEL OF NEED DETERMINATION:**

T1023

**MEDICATION MANAGEMENT:**

90862; BA019; BA026; BA126; H0033; H0034; H2010

**OUTPATIENT THERAPY:**

90847; 90849; 90899; ECC50; H0045; H2011; H2023; S9484; T1005

**RESPIRE CARE:**

ECC20; H0045; S5151; S9125

**SKILLS TRAINING:**

G0176; G0177; H2014; H2027; H2032

**SUB-ACUTE CARE:**

H2013; H2023

**SUPPORTIVE DAY PROGRAM:**

H0036

**TREATMENT FOSTER CARE:**

S5145; S5146

**WRAPAROUND SERVICES:**

H0038; H2021; H2022; H2027